

**HELD ON :
03.01.2010****Based on Memory**

1. A dc series motor should not be started :

- (1) At no load (2) At full load
(3) With normal load
(4) With a small load

2. The air gap between stator and armature of an electric motor is kept as small as possible

- (1) To get a stronger magnetic field
(2) To improve the air circulation
(3) To reach a higher speed of rotation
(4) To make the rotation easier

3. A polythene piece rubbed with wool is found to have a negative charge of 3.2×10^{-7} coulomb. Estimate the number of electrons transferred.

- (1) 2×10^{11} (2) 2×10^{12}
(3) 3×10^{11} (4) 3×10^{12}

4. Coulomb's law is given by $F = Kq_1q_2/r^n$ where n is :

- (1) $\frac{1}{2}$ (2) -2
(3) 2 (4) $-\frac{1}{2}$

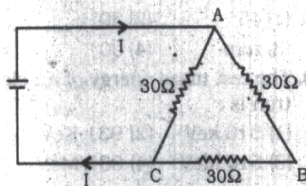
5. If a positive charge is shifted from a low potential region to high potential region, the electric potential energy :

- (1) Decreases (2) Increases
(3) Remains the same
(4) May increase/decrease

6. When a dielectric slab is introduced between the plates of a capacitor connected to a battery.

- (1) Charge on capacitor increases
(2) Potential difference across the capacitor increases
(3) capacity remains same
(4) None of these

7. The value of the current in the circuit shown in the following figure is :



- (1) 1 A (2) 0.01 A

- (3) 0.02 A (4) 0.1 A

8. Specific resistance of copper, silver and constantan are $1.78 \times 10^{-6} \Omega \text{ cm}$, $10^{-6} \Omega \text{ cm}$ and $48 \times 10^{-6} \Omega \text{ cm}$ respectively. Which is the best conductor ?

- (1) Copper
(2) Silver
(3) Constantan
(4) Copper and Silver

9. A piece of copper and another of germanium are cooled from room temperature to 40°K . The resistance of :

- (1) Each of them decreases
(2) Each of them increases
(3) Copper increases, germanium decreases
(4) Copper decreases, germanium increases

10. How much current is drawn by a motor of 0.5 HP from 220 volt supply ?

- (1) 1.2 A (2) 1.4 A
(3) 1.7 A (4) None of these

11. The commercial unit of electric energy is a kilowatt-hour (kwh). 1 kwh is equal to :

- (1) $3.6 \times 10^3 \text{ J}$ (2) $3.6 \times 10^6 \text{ J}$
(3) $3.4 \times 10^3 \text{ J}$ (4) $3.5 \times 10^6 \text{ J}$

12. In an electric iron the wire of nichrome is used because :

- (1) It has high melting point and high value of specific resistance
(2) It can be easily drawn into wires
(3) It is not oxidised easily when heated in air
(4) All of the above

13. A current in a circuit having constant resistance is tripled. How does this affect the power dissipation ?

- (1) It becomes 8 times
(2) It becomes 5 times
(3) It becomes 10 times
(4) It becomes 9 times

14. Special silicon steel is used in laminations in power transformer to reduce :

- (1) Eddy current losses
(2) Hysteresis losses
(3) Copper losses
(4) Both (1) and (2)

15. An inductor may store energy

- (1) Its electric field
(2) Its coils
(3) Its magnetic field
(4) Both in magnetic and electric fields

16. The working of a dynamo is based on the principle of :

- (1) Heating effect of current
(2) Magnetic effect of current
(3) Chemical effect of current
(4) Electromagnetic induction

17. In an a.c. circuit the current

- (1) Is in phase with the voltage
(2) leads the voltage
(3) Lags the voltage
(4) Any of the above

18. Which of the following quantities remains constant in a step-down transformer ?

- (1) Current
(2) Voltage
(3) Power
(4) None of these

19. Super high frequency electromagnetic waves are used in Radar. Their frequency range is :

- (1) 3000 to 30000 MHz
(2) 2000 to 20000 MHz
(3) 30000 to 60000 MHz
(4) None of these

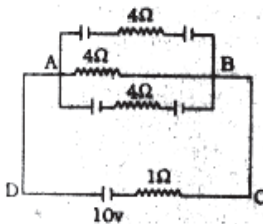
20. When an impurity is doped in an intrinsic semiconductor, the conductivity of the semiconductor :

- (1) Decreases
(2) Becomes zero
(3) Remains same
(4) Increases

21. In the following figure, the input is across the terminals A and B and the output is across terminals C and D. Then the output is :



- (1) Half wave rectified
 (2) Full wave rectified
 (3) Zero
 (4) Same as the input
22. Resistivity of semiconductor depends on :
- (1) Shape of semiconductor
 (2) Length of semiconductor
 (3) Atomic nature of semiconductor
 (4) None of these
23. A bird sitting on a high power line :
- (1) Gets killed instantly
 (2) Gets a mild shock
 (3) Is not affected practically
 (4) Gets a fatal shock
24. In the circuit shown below each capacitor has a capacity of $3\mu\text{F}$. Calculate the quantity of charge on each capacitor.



- (1) $12\mu\text{C}$ (2) $11\mu\text{C}$
 (3) $10\mu\text{C}$ (4) None of these
25. When an electric train moves down a hill, the dc motor acts as
- (1) dc series generator
 (2) dc shunt generator
 (3) dc shunt motor
 (4) None of these
26. The dimensional formula ML^2T^{-2} represents
- (1) Moment of force
 (2) Force
 (3) Acceleration
 (4) Momentum
27. An airtight cage with a parrot sitting in it is suspended from the spring balance. The parrot starts flying. The reading of the spring balance will

- (1) Increase (2) Decrease
 (3) Not change (4) Be zero
28. Light year is the unit of
- (1) Time
 (2) Intensity of light
 (3) Distance
 (4) None of these
29. Two bodies are moving in opposite direction with speed V . What is the magnitude of their relative velocity ?
- (1) 0 (2) V
 (3) $V/2$ (4) $2V$
30. A man in a lift weights more, when the lift
- (1) Begins to go up
 (2) Is going up steadily
 (3) Is slowing down
 (4) Is descending freely
31. Rocket works on the principle of conservation of :
- (1) Mass
 (2) Energy
 (3) Linear momentum
 (4) Angular momentum
32. To impart yellow colour to glass which of the following substances is mixed ?
- (1) Cobalt oxide
 (2) Cadmium sulphide
 (3) Manganese oxide
 (4) None of these
33. Sodium reacts vigorously with cold water to give
- (1) NaOH (2) Na_2O
 (3) H_2O (4) None of these
34. Which of the following metals is the most abundant in the earth's crust ?
- (1) Aluminium (2) Iron
 (3) Calcium (4) Potassium
35. Avogadro number is the number of molecules in :
- (1) One litre of a gas at N.T.P.
 (2) One mole of a gas
 (3) One gram of a gas
 (4) One kilogram of a gas
36. Rice takes longest to cook
- (1) In submarine 100 m below the surface of the sea
 (2) At the sea level
 (3) At Simla
 (4) At Mount Everest
37. Cloudy nights are usually warmer than clear ones, because clouds :
- (1) Do not radiate heat

- (2) Do not absorb heat
 (3) Have low thermal conductivity
 (4) None of these
38. Decibel is the unit of :
- (1) Light intensity
 (2) Sound intensity
 (3) Heat intensity
 (4) None of these
39. The factor that helps to recognise a person by his voice is :
- (1) Loudness (2) Pitch
 (3) Intensity (4) Quality
40. Which is the oldest breeding method ?
- (1) Hybridization
 (2) Selection
 (3) Mutation
 (4) Introduction
41. Plant and animals living in an area form
- (1) Community
 (2) Plankton
 (3) Population
 (4) Ecosystem
42. If the plants of the world die, all the animals will also die due to shortage of :
- (1) Cold (2) Food
 (3) Oxygen (4) Timber
43. The chemical formula of Haematite is
- (1) Fe_3O_4 (2) Fe_2O_3
 (3) FeCO_3 (4) None of these
44. Ethanol burns readily in air to form
- (1) Carbon dioxide
 (2) Oxygen
 (3) Nitrogen
 (4) None of these
45. The chemical formula of baking soda is :
- (1) Na_2CO_3 (2) NaHCO_3
 (3) NaCl (4) Na_2O
46. The term GPRS stands for :
- (1) General Packet Radar Service
 (2) General Post Radar Service
 (3) General Packet Radio Service
 (4) None of these
47. At magnetic poles, the angle of dip is :
- (1) 45° (2) 30°
 (3) zero (4) 90°
48. The rest mass energy of an electron is :
- (1) 510 keV (2) 931 KeV
 (3) 510 MeV (4) 931 MeV

49. Which of planet is brightest ?
 (1) Mercury (2) Venus
 (3) Marsh (4) Jupiter
50. Cathode rays were discovered by :
 (1) J.J. Thomson
 (2) Goldstein
 (3) Chadwick
 (4) Faraday
51. The sum of two numbers is 1215 and their HCF is 81. How many such pairs of numbers can be formed ?
 (1) 2 (2) 3
 (3) 4 (4) 5
52. The HCF of $\frac{3}{7}$, $\frac{5}{14}$ and $\frac{17}{28}$ is :
 (1) $\frac{1}{14}$ (2) $\frac{1}{7}$
 (3) $\frac{3}{14}$ (4) $\frac{1}{28}$
53. The least perfect square number which is divisible by 10, 12, 15 and 18 is :
 (1) 1600 (2) 900
 (3) 2500 (4) 3600
54. The average weight of 29 students is 40 kg. If the weight of the teacher be included the average weight is increased by 300 gms. The weight of the teacher is :
 (1) 49 kg (2) 49.5 kg
 (3) 55 kg (4) 48.5 kg
55. A positive number when decreased by 4 is equal to 21 times the reciprocal of the number, then the number is :
 (1) 5 (2) 7
 (3) 9 (4) 8
56. Annual incomes of A and B is in the ratio of 5 : 3 and their annual expenses bear a ratio 3 : 1. If each of them saves Rs. 600 at the end of the year, the annual income of A is :
 (1) Rs. 1200 (2) Rs. 1400
 (3) Rs. 1500 (4) Rs. 1600
57. 95 men had provisions for 200 days. After 5 days 30 men died due to an epidemic. The remaining food will last for how many days ?
 (1) 200 (2) 180
 (3) 285 (4) None of these

58. A, B and C enter into a partnership with a certain capital in which A's contribution is Rs. 10000. If out of total profit of Rs. 1000, A gets Rs. 500, B gets Rs. 300 then C's capital is :
 (1) Rs. 4000 (2) Rs. 3600
 (3) Rs. 4400 (4) Rs. 4800
59. A mixture contains alcohol and water in the ratio 4 : 3. If 5 litres of water is added to the mixture, the ratio becomes 4 : 5. The quantity of alcohol in the given mixture is :
 (1) 10 litres (2) 12 litres
 (3) 11 litres (4) 15 litres
60. A number exceeds 20% of it-self by 40. The number is :
 (1) 50 (2) 60
 (3) 320 (4) 80
61. Ram is 4 times as old as his son. Four years hence, the sum of their ages will be 43 years. The present age of the son is :
 (1) 3 years (2) 5 years
 (3) 6 years (4) 7 years
62. The ages of two person, differ by 20 years. If 5 years ago, the elder one be 5 times as old as the younger one their present ages (in years) are respectively.
 (1) 30,10 (2) 20,10
 (3) 35,15 (4) 51,17
63. $0.\bar{8} + 0.\bar{4} + 0.\bar{5} + 0.\bar{7}$ is equal to :
 (1) $1\frac{1}{3}$ (2) $2\frac{2}{3}$
 (3) $2\frac{2}{7}$ (4) $2\bar{4}$
64. If $\sqrt{0.03 \times 0.3 \times a} = 0.3 \times 0.03 \times \sqrt{b}$ then the value of $\frac{a}{b}$ is :
 (1) 0.9 (2) 0.09
 (3) 0.009 (4) 0.0009
65. The sum of $\bar{2}.75 + \bar{3}.78$ is :
 (1) $\bar{5}.53$ (2) $\bar{4}.53$
 (3) $\bar{1}.53$ (4) $\bar{1}.43$
66. The value of $\left[\frac{3}{2^4} + 2^2 + 2^4 + 1 \right] \left[\frac{1}{2^4} - 1 \right]$ is equal to :
 (1) 1 (2) -1
 (3) 2 (4) -2

67. $2 + \frac{2}{\sqrt{2}} + \frac{1}{2 + \sqrt{2}}$ is equal to :
 (1) 4 (2) 3
 (3) 3 (4) 1
68. The value of $\frac{\sqrt{0.361}}{\sqrt{0.225}}$ is :
 (1) 1.4 (2) 1.3
 (3) 1.267 (4) 1.376
69. The sum of $\sqrt{0.0001} + \sqrt{0.0081} + \sqrt{0.000009}$ is :
 (1) 0.359 (2) 0.534
 (3) 0.543 (4) 0.353
70. Naresh secured 20 marks in Hindi, 60% in English and in Maths as well as in Science. What were his total marks on maximum marks obtained in each of these 4 subjects ?
 (1) 120 (2) 125
 (3) 150 (4) 200
71. The perimeter of a square is 100 cm. The length of the rectangle which is 10 cm wide and has equal to that of the square is :
 (1) $14\frac{1}{3}$ cm (2) $18\frac{2}{5}$ cm
 (3) $12\frac{3}{4}$ cm (4) $15\frac{5}{8}$ cm
72. If a man can walk to a place in $4\frac{3}{4}$ hours walking at $3\frac{1}{4}$ km per hour, how long would it take other man walking at $3\frac{1}{6}$ km per hour to walk there and back ?
 (1) $10\frac{1}{3}$ hrs (2) $9\frac{1}{4}$ hrs
 (3) $9\frac{3}{4}$ hrs (4) $10\frac{2}{3}$ hrs
73. In a train accident 10% of the passengers died on the spot and of the rest, later in the hospital 20% more died. If the number of survivors was 1710, how many passengers were originally there ?
 (1) 2000 (2) 1950
 (3) 2040 (4) 1800

4. The curved surface area of one of the two cones is double of the other while the slant height of second is double that of the first. What is the ratio of the radius of the second cone to that of the first cone ?
 (1) 1 : 3 (2) 1 : 4
 (3) 4 : 1 (4) None of these
5. Two equal glasses filled with mixture of milk and water in the proportions of 2 : 1 and 1 : 1 respectively are emptied into a third glass. What is the proportion of milk and water in the third glass ?
 (1) 3 : 7 (2) 5 : 7
 (3) 4 : 7 (4) 7 : 5
6. The population of a town is 10,000. If the males increase by 5% and the females by 6%, the population will be 10540. How much females are there ?
 (1) 3500 (2) 4000
 (3) 4500 (4) 2500
7. A certain number of men completed a piece of work in 60 days. If there were 8 men more the work could be finished in 10 days less. How many men were originally there ?
 (1) 32 (2) 36
 (3) 40 (4) None of these
8. At a certain rate of simple interest, a certain sum doubles itself in 10 years. It will treble itself in:
 (1) 14 years (2) 16 years
 (3) 18 years (4) 20 years
9. A sphere of radius 2cm is put into water contained in a cylinder of radius 4 cm. If the sphere is completely immersed in the water the water level in the cylinder rises by :
 (1) $\frac{2}{3}$ cm (2) $\frac{1}{3}$ cm
 (3) $\frac{3}{4}$ cm (4) 1 cm
10. The tax on commodity is diminished by 15% and its consumption increases by 10%. The decrease per cent in the revenue derived from it is :
 (1) 77.5% (2) 6.5%
 (3) 23.7% (4) None of these
11. A and B are two destinations A car goes from A to B at average speed of 64 km/hr and returns to A at a slower speed. If its average speed for the whole journey is 56 km/hr. It returned with speed :
 (1) 45.7 km/hr.
 (2) 49.76 km/hr.
 (3) 48 km/hr.
 (4) 49.78 km/hr.
12. Rs. 3757 is to be divided between A and B such that A's share at the end of 7 years may equal to B's share at the end of 9 years. If rate per cent be 10% p.a. compound interest B's share is :
 (1) Rs. 1600 (2) Rs. 1700
 (3) Rs. 1650 (4) Rs. 1800
13. For a triangle whose sides (in metres) are 50, 78, 112 respectively the length (in metres) of perpendicular from the opposite angle on the side 112 metres is :
 (1) 30.1 (2) 28
 (3) 32 (4) None of these
14. Ramesh travelled 1200 km by air which formed $\frac{2}{3}$ of his trip. One third of whole trip, he travelled by car and the rest of the journey he performed by train. The distance travelled by train was :
 (1) 820 km (2) 840 km
 (3) 900 km (4) None of these
15. A reduction of 21% in the price of wheat enables a person to buy 10.5 kg more for Rs. 100. What is the reduced price per kg. ?
 (1) Rs. 2 (2) Rs. 2.50
 (3) Rs. 2.35 (4) Rs. 2.40
16. The parliament of Afghanistan is called :
 (1) Majlis
 (2) Senate
 (3) National Assembly
 (4) Shora
17. The first Europeans to come to India were
 (1) Portuguese (2) British
 (3) French (4) Turks
18. Bagasse, a by product of sugar manufacturing industry, is used for the production of :
 (1) Paper
 (2) Alcohol
 (3) Confectionaries
 (4) Glass
19. Marble is a :
 (1) Plutonic rock
 (2) Alcohol
 (3) Metamorphic rock
 (4) Sedimentary rock
20. Which of the following city is not situated on the bank of river Ganga ?
 (1) Allahabad (2) Varanasi
 (3) Haridwar (4) Lucknow
21. Who is known as father of Genetics ?
 (1) Charles Darwin
 (2) Gregor Mendel
 (3) Lamarck
 (4) Weismann
22. World's lowest international airport situated below the mean sea level is at :
 (1) Amsterdam (2) Colombo
 (3) Jeddah (4) Hong Kong
23. Arthashastra is a treatise on :
 (1) Making love
 (2) Morality
 (3) Law (4) Polity
24. How many members may be nominated by the president of India to the Lok Sabha ?
 (1) 2 (2) 4
 (3) 15 (4) 12
25. The 'India Economic Summit' was organised by the World Economic Forum (WEF) in association with CII in New Delhi in November 2009.
 (1) 12th (2) 16th
 (3) 23rd (4) 25th
26. "Mona Lisa" is a work of :
 (1) Pablo Picasso
 (2) Leonardo Da Vinci
 (3) Michelangelo
 (4) None of these
27. Which of the following languages does not have Dravidian origin ?
 (1) Kannada (2) Telugu
 (3) Marathi (4) Malayalam
28. The artificial stimulation of resistance to diseases is known as
 (1) Embolism (2) Immunisation
 (3) Sterilisation (4) None of these
29. Which of the following does not generate energy inside the body but are still essential ?
 (1) Fats (2) Proteins
 (3) Vitamins (4) Carbohydrates

- 100.** The Chinese pilgrim who visited India during the reign of Chandragupta II was :
 (1) Fa-Hieu (2) Hue-Sang
 (3) Alberuni (4) None of these
- 101.** Svetambar and Digambar represent the sects of :
 (1) Svetambar
 (2) Jainism
 (3) Hinduism
 (4) None of these
- 102.** Which writer translated "Babar Nama" into Persian language during the time of Akbar ?
 (1) Abul Fazal
 (2) Faize
 (3) Abdur-Rahim Khani Khanan
 (4) None of these
- 103.** World Champion Viswanathan Anand, in November 2009, tamed former World Champion ___ to win the rapid four-game chess series in Ajaccio in France.
 (1) Anatoly Karpov
 (2) Bobby Simpson
 (3) Garry Kasparov
 (4) Vassily Ivanchuk
- 104.** Gandhi suspended the non-cooperation movement because of :
 (1) Differences between moderates and extremists
 (2) Violence at chauri-chaura
 (3) Split in congress
 (4) None of these
- 105.** The temperature generally tends to decrease towards the poles because of :
 (1) The air movement generally towards the equator
 (2) The polar winds are cool
 (3) The earth's shape at poles
 (4) The solar rays fall slanting on poles
- 106.** Western Ghats are formed as a result of :
 (1) Accumulation of rocks
 (2) Eastwards tilting of peninsular block
 (3) Faulting of earth's crust
 (4) None of these
- 107.** Seasons are caused by
 (1) Rotation of earth about its own axis
 (2) Revolution of earth around sun
 (3) Inclination of earth on its axis
 (4) Shape of the earth

- 108.** The main theme of "Green Revolution" is :
 (1) Improved cultivation
 (2) Use of fertilisers
 (3) Use of pesticides
 (4) Use of high yielding varieties of seeds

- 109.** Which country, in October 2009, demanded the remains of Nobel Peace laureate Mother Teresa and King Ahmet Zog, to be returned to the country?
 (1) Denmark (2) Ireland
 (3) Sweden (4) Albania

- 110.** German silver is an alloy of :
 (1) Silver, Copper & Aluminium
 (2) Silver, Zinc and Copper
 (3) Copper, Nickel and Silver
 (4) Zinc, Copper and Nickel

Directions (111-115) : In the following questions find the missing letters.

- 111.** ab — ba — ba —
 (1) bab (2) aba
 (3) bbb (4) abb

- 112.** abaa — aab — a — a
 (1) abaa (2) bbaa
 (3) bab (4) aab

- 113.** aa — b — abb — bb
 (1) abaa (2) bbaa
 (3) baaa (4) baba

- 114.** a — ab — baa — bb —
 (1) baba (2) abab
 (3) aabb (4) bbaa

- 115.** abc — bc — c —
 (1) acbbab (2) aabbca
 (3) aabacb (4) aababc

Directions (116-120) : Choose the same relationship from given four answer choices as given in original pair.

- 116.** Teeth : Chew
 (1) Eyes : Flicker
 (2) Sweater : Heat
 (3) Food : Taste
 (4) Mind : Think

- 117.** Train : Track
 (1) Fame : Television
 (2) Water : Boat
 (3) Bullet : Barrel
 (4) Idea : Brain

- 118.** Square : Cube
 (1) Triangle : Prism
 (2) Line : Cylinder
 (3) Circle : Sphere
 (4) Sphere : Earth

- 119.** Bird : Wings
 (1) Car : Wheel
 (2) Pen : Paper
 (3) Dog : Lungs
 (4) Whale : Water

- 120.** Liquor : Drink
 (1) Water : Sip
 (2) Bread : Butter
 (3) Tea : Beverage
 (4) Snuff : Inhale

Directions (121-125) : Choose the odd one from the given answer choices.

- 121.** (1) Loom : Cloth
 (2) Table : Drawer
 (3) Book : Page
 (4) Car : Wheel

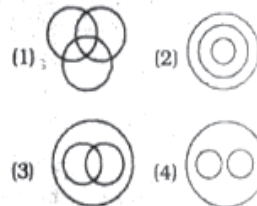
- 122.** (1) Meeting : Chairman
 (2) Tomato : Potato
 (3) Army : General
 (4) Crache : Infant

- 123.** (1) Mango : Fruit
 (2) Boy : Girl
 (3) Shirt : Dress
 (4) Table : Furniture

- 124.** (1) White (2) Blue
 (3) Green (4) Yellow

- 125.** (1) Book (2) Pen
 (3) Pencil (4) Ink

Directions (126-130) : Choose the most suitable diagram for illustrating the relationship between the two terms. The diagrams are :



- 126.** Dog, cat, animal
127. Sister mother, women
128. Town, state, country
129. Rhombus, quadrilaterals, polygons
130. English, Hindi, Language

Directions (131-135) : The given figure represents a multiplication operation, where each alphabet represents a different number.

$$\begin{array}{r}
 \text{A A} \\
 \times \text{B C} \\
 \hline
 \text{D 7 4} \\
 \text{A A E} \\
 \hline
 5 \ 9 \ 4
 \end{array}$$

131. What is the value of A ?

- (1) 0 (2) 3
(3) 2 (4) 4

132. What is the value of D ?

- (1) 3 (2) 2
(3) 4 (4) 5

133. What is the value of B ?

- (1) 3 (2) 1
(3) 2 (4) 6

134. What is the value of $AB + CD - BE$?

- (1) 75 (2) 86
(3) 84 (4) 88

135. What is the value of C ?

- (1) 1 (2) 4
(3) 7 (4) 6

Directions (136-140) : Pick out the most effective word(s) from the given words to fill in the blanks to make the sentence meaningfully complete.

136. A woman came in with a baby who, she said a safety pin.

- (1) was just swallowing
(2) Swallowed
(3) had just swallowed
(4) just swallowed

137. The telephone several before I answered it.

- (1) was ringing
(2) has rung
(3) had rung
(4) would ring

138. An employment advertisement should the number of vacancies.

- (1) provide
(2) specify
(3) contain
(4) declare

139. A crescendo of metallic thuds arose from the market, where the iron-smiths were the pieces of metals.

- (1) flattering
(2) striking
(3) hammering
(4) thrashing

140. Ambition is one of those which are never satisfied.

- (1) ideas (2) fancies
(3) passions (4) needs

Directions (141-145) : In questions given below out of the four alternatives choose the one which can be substituted for the given words/sentence.

141. Something that relates to everyone in the world :

- (1) General (2) Common
(3) Usual (4) Universal

142. An expression of mild disapproval :

- (1) Warning
(2) Denigration
(3) Impertinence
(4) Reproof

143. One who is not easily pleased by anything

- (1) Maiden (2) Mediaeval
(3) Precarious (4) Fastidious

144. Murder of a king

- (1) Infanticide (2) Matricide
(3) Genocide (4) Regicide

145. A remedy for all diseases

- (1) Stole (2) Marvel
(3) Panacea (4) Recompense

Directions (146-150) : In following questions four alternatives are given for the Idiom/phrase in bold in the sentence. Choose the alternative which best expresses the meaning of the Idiom/phrase ?

146. How long will the people **put up with** the increasing economic hardships ?

- (1) Welcome
(2) Take easily
(3) Remain-satisfied with
(4) Tolerate

147. Do not trust a man who **blows his own trumpet**.

- (1) Flatters
(2) Praises others
(3) Admonishes other
(4) Praises himself

148. The dacoit murdered the man in **cold blood**.

- (1) Coldly (2) Boldly
(3) Ruthlessly (4) Deliberately

149. My car **broke down** on way to the railway station.

- (1) Stopped
(2) Met with an accident
(3) Ran out of petrol
(4) Failed to work

150. The time is running out, you must **look sharp**.

- (1) Be careful
(2) Make haste
(3) Be punctual
(4) Be sensible

ANSWERS

1.(1)	2.(1)	3.(2)	4.(2)
5.(2)	6.(1)	7.(4)	8.(2)
9.(4)	10.(3)	11.(2)	12.(4)
13.(4)	14.(1)	15.(3)	16.(4)
17.(4)	18.(3)	19.(1)	20.(4)
21.(2)	22.(3)	23.(3)	24.(1)
25.(1)	26.(1)	27.(3)	28.(3)
29.(4)	30.(1)	31.(3)	32.(2)
33.(1)	34.(1)	35.(2)	36.(4)
37.(3)	38.(2)	39.(4)	40.(4)
41.(1)	42.(3)	43.(2)	44.(1)
45.(2)	46.(3)	47.(4)	48.(1)
49.(2)	50.(1)	51.(3)	52.(4)
53.(2)	54.(1)	55.(2)	56.(3)
57.(3)	58.(1)	59.(1)	60.(1)
61.(4)	62.(1)	63.(2)	64.(3)
65.(2)	66.(1)	67.(2)	68.(3)
69.(4)	70.(2)	71.(4)	72.(3)
73.(1)	74.(2)	75.(4)	76.(2)
77.(3)	78.(4)	79.(1)	80.(2)
81.(4)	82.(2)	83.(4)	84.(4)
85.(1)	86.(4)	87.(1)	88.(1)
89.(1)	90.(4)	91.(2)	92.(1)
93.(4)	94.(1)	95.(4)	96.(2)
97.(3)	98.(2)	99.(3)	100.(1)
101.(2)	102.(3)	103.(1)	104.(2)
105.(4)	106.(3)	107.(2)	108.(4)
109.(4)	110.(4)	111.(4)	112.(3)
113.(3)	114.(2)	115.(4)	116.(4)
117.(3)	118.(1)	119.(1)	120.(3)
121.(1)	122.(4)	123.(2)	124.(1)
125.(4)	126.(4)	127.(3)	128.(2)
129.(2)	130.(4)	131.(3)	132.(1)
133.(2)	134.(3)	135.(3)	136.(3)
137.(3)	138.(2)	139.(3)	140.(3)
141.(4)	142.(4)	143.(4)	144.(4)
145.(3)	146.(4)	147.(4)	148.(3)
149.(1)	150.(2)		