

24 0

Like

[Home](#) [About](#) [Contact us](#) [Privacy Policy](#)

You are here: » [RRB Junior Engineer JE Mechanical Previous Question Papers](#)

RRB Junior Engineer JE Mechanical Previous Question Papers

Like 4,627 people like this.

RRB JE MECHANICAL ENGINEER TECHNICAL QUESTIONS

A. A single acting reciprocating pump, running at 60 r.p.m, delivers 0.01 m³/sec of water. The area of the piston is 0.05m² and stroke length is 40 cm. Then theoretical discharge of the pump will be

- (a) 0.015 m³/sec
- (b) 0.02 m³/sec
- (c) 0.025 m³/sec
- (d) 0.03 m³/sec

Ans:- B

In question (A), the co-efficient of discharge would be

- (a) 0.9
- (b) 0.8
- (c) 0.6
- (d) 0.5

Ans:- D

In question (A), the slip of the pump would be

- (a) 0.02 m³/sec
- (b) 0.01 m³/sec
- (c) 0.005 m³/sec
- (d) 0.003 m³/sec

Ans:- B

Work done in a free expansion process is

- a.0
- b.minimum
- c.maximum
- d. positive

In a reciprocating engine

- a. crankshaft and flywheel form 2 kinematic links
- b. crankshaft and flywheel form 1 kinematics links
- c. crankshaft and flywheel do not form kinematic links
- d. flywheel and crankshaft separately form kinematic links

A kinematic chain is known as a mechanism when

- a.none of the link is fixed
- b.one of the links is fixed
- c. two of the links are fixed
- d.all of the links are fixed

The impact strength of an material is an index of its

- a. Toughness
- b. Tensile strength
- c. Capability of being cold worked
- d. Hardness
- e. Fatigue strength

Ans :: a

A feeler gauge is used to check

- a. Radius



PLUS ONE PLEASE?

924

Search

Free Email Updates

Get All Latest Updates in Ur e-mail Inbox..

Enter Your email here...

Subscribe

And then confirm your email subscription

Free SMS Alerts



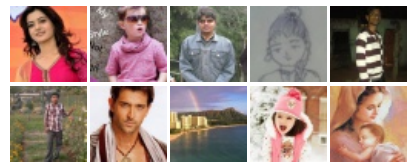
Sponsored Links



Find us on Facebook



11,477 people like Indianshout.



Facebook social plugin

Categories

Admit Cards

AIEEE

AIPMT

Answer Keys

- b. Screw pitch
c. Surface roughness
d. Unsymmetrical shape
e. Thickness of clearance
Ans :: e

The possibility of negative slip in reciprocating pump is when

- (a) delivery pipe is short
(b) suction pipe is long
(c) pump is running at high speed
(d) all of the above

Ans:- D

The slip in the reciprocating pump will be negative if

- (a) $Q_{th} > Q_{act}$
(b) $Q_{th} < Q_{act}$
(c) $Q_{th} = Q_{act}$
(d) none of the above

Ans:- B

Thermal efficiency of a closed cycle gas turbine plant increases by

- a. reheating
b. intercooling
c. regenerator
d. all of the above

The power required to drive a single acting reciprocating pump is equal to

- (a) $w.A.L.N / 4500$
(b) $w.A.L.N.(h_s + h_d)4500$
(c) $A.L.N. (h_s + h_d)/4500$
(d) $w.L.N/4500$ where $w =$ specific weight of water

Ans:- B

The rate of flow of water through a double acting reciprocating pump is equal to

- (a) $A.L.N / 60$
(b) $2 A.L.N/60$
(c) $A.L.N./2\sqrt{60}$
(d) $3 A.L.N./60$

Ans:- B

The rate of flow of water through a single acting reciprocating pump is equal to

- (a) $A.L.N / 60$
(b) $2 A.L.N/60$
(c) $A.L.N./2\sqrt{60}$
(d) $3 A.L.N./60$

Ans:- A

Petrol commercially available in India for Indian passenger cars has octane number in the range

- A 40 to 50
B 60 to 70
C 80 to 85

D 95 to 100The knocking tendency in C.I engines increases with

- A decrease of compression ratio
B increase of compression ratio
C increasing the temperature of inlet air
D increasing cooling water temperature

The pump, which works on the principle of water hammer, is known as

- (a) centrifugal pump
(b) reciprocating pump
(c) hydraulic ram
(d) none of the above

Ans:- C

The pump which raises water without any external power for its operation, is known as

- (a) centrifugal pump

AP LPCET	APGENCO
Application Forms	APPSC
APRDC	APRJC
APTET	APTRANSCO
B.Ed/M.Ed	BANK EXAMS
BHEL	BITSAT
BSNL JTO	BSNL-JAO
CAT-(Common Admission Test)	CBSE
	CEEP
CLAT	COMEDK
Counselling Schedule	CTET
DIET CET	DRDO
EAMCET	ECET
ECIL	EDCET
Exam Pattern	FMS
GATE	GMAT
GPAT	GRE
GUJCET	HORTICET
IBPS	ICET
IELTS	IES(Indian Engineering Services)
IES/ISS	IIST ISAT
IIT JAM	IIT-JEE
IRDA	ISRO
JIPMER	JKCET
JMET	JNTU
JOB GUIDANCE	KARNATAKA PG CET
KCET	KEAM
KMAT	KPSC
KUCET	LAWCET
LPCET	M.Tech
MAHARASHTRA SET	MAT
MBA	MCA
MHT-CET	MP-PET
NERIST-NEE	NEST
NIMCET	NIPER JEE
NTPC	ONGC
PECET	PGCET
PGEC	PGECET
PGLCET	PLACEMENT PAPERS
PMET	PTET
PUCET	Question Papers
RESULTS	RPET
RPMT	RRB
RTET	Scholar ships

- (b) reciprocating pump
 (c) hydraulic ram
 (d) hydraulic intensifier

Ans:- C

The power at the shaft of a centrifugal pump is 100 KW, and the power available at the impeller is 900 KW. If water horse power is 720 KW, then overall efficiency of the centrifugal pump will be

- (a) 90% (b) 80% (c) 75% (d) 72%

Ans:- D

Metal in machining operation is removed by

- a. Tearing chips
 b. Distortion of metal
 c. Shearing the metal across a zone
 d. Cutting the metal across a zone
 e. Pushing the metal with tool

Ans :: c

Which one of the following methods produces gear by generating process

- a. Hobbing
 b. Casting
 c. Punching
 d. Milling
 e. Broaching

Ans :: a

The term $W.Q.Hm / (75 S.H.P)$ for a centrifugal pump is known as

- (a) mechanical efficiency (b) manometric efficiency (c) overall efficiency (d) none of the above

Ans:- C

If a circular chamber is introduced between the casing and the impeller, then casing is known as

- (a) vortex casing (b) volute casing (c) casing with guide blades (d) none of the above

Ans:- A

The rotating part of a turbine is known as

- (a) Impeller (b) Guide mechanism (c) Runner (d) None of the above

Ans:- A

In case of Kaplan turbine, velocity of flow at inlet is

- (a) less than that at outlet (b) more than that at outlet
 (c) equal of that at outlet (d) none of the above

Ans:- C

The main advantage of the draft-tube is to convert

- (a) pressure energy into kinetic energy
 (b) kinetic energy into pressure energy
 (c) pressure energy into electrical energy
 (d) none of the above

Ans:- B

The pressure at the exist of the runner of a reaction turbine is generally

- (a) more than atmospheric pressure
 (b) equal to atmospheric pressure
 (c) less than atmospheric pressure
 (d) none of the above

Ans:- C

Similar Posts:

- [Download JNTU M.Tech 1-semester POWER SYSTEM DYNAMICS Exam Question Papers](#)
[Download JNTU M.Tech 1-semester MODERN CONTROL THEORY Exam Question Papers](#)
[Download JNTU M.Tech 1-semester MICROPROCESSORS & MICRO CONTROLLERS September-2008 Exam Question Paper](#)
[Download JNTU M.TECH 1-semester MICROPROCESSORS & MICRO CONTROLLERS MARCH-2008 Exam Question Paper](#)
[Download JNTU M.TECH 1-semester MICROPROCESSORS & MICRO CONTROLLERS September-](#)

SNAP	SSC
TANCET	TNEA
TOEFL	TPSC
UGC NET	UPSC
UPTU SEE	VIT
XAT	

Recent Posts

- SBI PO 2013 Call Letters, Admit Cards
 Probationary Officers
- BSNL TTA Recruitment 2013 Telecom Technical
 Assistant 766 Vacancies
- AP Junior Intermediate 1st year March 2013
 Results General, Vocational
- BSNL Haryana Recruitment 2013 TTA 156
 Vacancies
- SSC CGL 2013 Answer Key, Question Paper held
 on 14th & 21st April 2013
- Odisha Gramya Bank Recruitment 2013 Officers,
 Office Assistants 301 Vacancies
- Purvanchal Gramin Bank Recruitment 2013
 Officers, Office Assistants 198 Vacancies
- Chhattisgarh Gramin Bank Recruitment 2013
 Officers, Office Assistants 168 Vacancies
- JEE Main 2013 Answer Keys, Solutions,
 Question Paper held on 7th April 2013
- Union Bank of India Recruitment 2013 Specialist
 Officers 349 Vacancies