

EXAMEXPERTS

IBPS EXAM

BANKING EXAM

CAT-EXAM

INDIAN HISTORY

COMPUTER AWARENESS

GENERAL AWARENESS

EXAMS PAPERS

PSU EXAMS

IES EXAMINATION

- [ABOUT IES](#)
- [ELIGIBILITY CRITERIA](#)
- [HOW TO APPLY](#)
- [IES EXAM SYLLABUS](#)
- [PREVIOUS YEAR PAPERS](#)
- [PRACTICE PAPERS](#)
- [IES STUDY MATERIALS](#)
- [INTERVIEW TIPS](#)

BSNL EXAMINATION

- [ABOUT BSNL JTO](#)
- [BSNL JTO ELIGIBILITY](#)
- [HOW TO APPLY](#)
- [BSNL JTO SYLLABUS](#)
- [PREVIOUS YEAR PAPERS](#)
- [JTO STUDY MATERIALS](#)
- [PREPARATION TIPS](#)
- [BSNL TTA EXAM](#)
- [BSNL JAO EXAM](#)

GATE EXAM

- [ABOUT GATE](#)
- [ELIGIBILITY CRITERIA](#)
- [HOW TO APPLY](#)
- [GATE 2013 SYLLABUS](#)
- [PREVIOUS YEAR PAPERS](#)
- [GATE STUDY MATERIALS](#)
- [PREPARATION TIPS](#)
- [GATE 2013 RESULTS](#)
- [GATE ADMIT CARD](#)
- [GATE SCORE CARD](#)

AIEEE EXAMINATION

- [ABOUT AIEEE](#)
- [ELIGIBILITY CRITERIA](#)
- [HOW TO APPLY](#)
- [AIEEE SYLLABUS](#)
- [PREVIOUS YEAR PAPERS](#)

DOWNLOAD STATEWISE BSNL TTA NOTIFICATION & SYLLABUS

Tuesday, 23 April 2013

TTA EXAM PAPERS | BSNL TTA SOLVED PAPERS | TTA QUESTION PAPERS | TTA OLD EXAM PAPERS |

BHARAT SANCHAR NIGAM LIMITED (BSNL)

TELECOM TECHNICAL ASSISTANT

Computer Engineering Model Paper

Q.1.What is the name of the software that allows us to browse through web pages?

- Browser
- Mail Client
- [FTP Client](#)
- Messenger

Q.2.What is the address given to a network called?

- System Address
- Sys ID
- Process ID
- IP Address

Q.3.Which one of the following is a valid DOS command?

- LIST *.*
- LIST???.
- RECOVER A:
- RENAME A:SAMPLE.TXT C:TEST.DOC

Q.4.All system settings in [WINDOWS](#) are stored in:

- CONTROL.INI
- MAIN.INI
- SYSTEM.INI
- SETTING.INI


Q.5.Which number system is usually followed in a typical 32-bit computer?

- 2
- 10
- 16
- 32

Q.6.[Which of](#) the following is not an output device:

- Printer

Find us on Facebook

 Examexperts.blogspot
results, job Like

7 people like
Examexperts.blogspot.com.



Facebook social plugin

WHAT'S NEW

- [TTA TO Model Papers](#)
- [Prasar Bharti Model Papers](#)
- [POST-OFFICE Model Papers](#)

STATE PUBLIC SERVICE COMMISSION

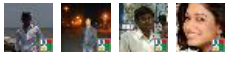
- ➔ [ANDHRA-PRADESH PSC](#)
- ➔ [ARUNACHAL-PRADESH PSC](#)
- ➔ [ASSAM PSC](#)
- ➔ [BIHAR PSC](#)
- ➔ [CHATTISHGARH PSC](#)
- ➔ [GOA PSC](#)
- ➔ [GUJRAT PSC](#)
- ➔ [HARYANA PSC](#)
- ➔ [HIMACHAL-PRADESH PSC](#)
- ➔ [JAMMU & KASHMIR PSC](#)
- ➔ [JHARKHAND PSC](#)
- ➔ [KARNATAKA PSC](#)
- ➔ [KERALA PSC](#)
- ➔ [MADHYA-PRADESH PSC](#)
- ➔ [MANIPUR PSC](#)
- ➔ [MAHARASTRA PSC](#)
- ➔ [MEGHALAYA PSC](#)

[STUDY MATERIALS](#)
[PREPARATION TIPS](#)

Followers

Join this site
with Google Friend Connect

Members (7)



Already a member? [Sign in](#)

- Scanner
- Flat Screen
- [Touch Screen](#)

Q.7.A microprocessor is a processor with reduced

- instruction set
- power requirement
- MIPS [performance](#)
- none of the above

Q.8.Which of the following is not an output of an assembler?

- executable program
- source listing with line numbers and errors
- a symbol table
- object program

Q.9.Which layer of OSI model is responsible for routing and flow control:

- Presentation
- Transport
- Network
- Data Link

Q.10.Arrays are passed as arguments to a function by

- value
- reference
- both a and b
- none of the above

Q.11.Array is:

- linear data structure
- non-linear structure
- none of the above
-

Q.12.A data structure in which elements are added and removed from only one end, is known as:

- Array
- Stack
- Queue
- None of the above

Q.13.C language is available for which of the following Operating Systems?

- DOS
- Windows
- Unix
- All of the above

Q.14.A diamond-shaped box in an Entity-Relationship diagram refers to:

- Entity
- Relationship
- Attribute
-

Q.15.Which of the following statements in regard to Directories is false?

- Directories can exist inside directories
- The root directory is always at the highest level

➔ [MIZORHM PSC](#)
 ➔ [NAGALAND PSC](#)
 ➔ [ORISSA PSC](#)
 ➔ [PANJAB PSC](#)
 ➔ [RAJESTHAN PSC](#)
 ➔ [SIKKIM PSC](#)
 ➔ [TAMILNADU PSC](#)
 ➔ [TRIPURA PSC](#)
 ➔ [UTTAR-PRADESH PSC](#)
 ➔ [UTTRANCHAL PSC](#)
 ➔ [WEST BENGAL PSC](#)

STATE SELECTION COMMISSION

➔ [COMBINED GRADUATE LEVEL](#)
 ➔ [HIGHER SEC LEVEL \(10+2\) FOR DEO,LDC](#)
 ➔ [SI IN CPO & NCB INTELLIGENCE OFFICERS](#)
 ➔ [JUNIOR ENGINEER \(CIVIL & ELECTRICAL \)](#)
 ➔ [JUNIOR TRANSLATOR CSOLS EXAM](#)
 ➔ [MULTI TASKING \(NON-TECHNICAL \) STAFF EXAM](#)
 ➔ [SECTION OFFICER \(COMM/AUDIT\) EXAM](#)
 ➔ [STENOGRAPHERS GRADE C & D](#)
 ➔ [FOOD CORPORATION OF INDIA EXAM](#)

MPPSC 2012-13

[ABOUT MPPSC](#)
[ELIGIBILITY CRITERIA](#)
[HOW TO APPLY](#)
[NEW EXAM PATTERN](#)
[MPPSC PRE SYLLABUS](#)
[MPPSC MAINS SYLLABUS](#)
[PREVIOUS YEAR PAPERS](#)
[MODEL PRACTICE PAPERS](#)
[MPPSC STUDY MATERIALS](#)
[INTERVIEW TIPS](#)

CSAT/IAS EXAM

[ABOUT CSAT](#)
[ELIGIBILITY CRITERIA](#)
[HOW TO APPLY](#)
[CSAT PRE EXAM SYLLABUS](#)
[CSAT MAINS SYLLABUS](#)
[PREVIOUS YEAR PAPERS](#)
[MODEL PRACTICE PAPERS](#)
[CSAT STUDY MATERIALS](#)

- Directories with files can be deleted
- Directories cannot be renamed

Q.16.The principle means of identifying entities within an entity set is:

- Primary Key
- Record
- Attribute
- Tuple

Q.17.Modem refers to:

- Modulator
- Modulation
- Demodulator
- Modulator and Demodulator

Q.18.Which one of the following is not a Normal Forms (Normalization) rule with regards to the Relational Model?

- All fields within a table must relate to or directly describe the Primary Key.
- Repeating Groups must be eliminated from tables.
- Fields that can contain non-numeric data are to be removed and placed within their own tables with an associated Primary Key.
- Redundant data is to be eliminated by placing the offending fields in another table.

Q.19.What is a file server?

- A computer that performs a service for other computers
- A computer that controls the printers on the network
- A computer that stores files that are created by network users
-

Q.20.If c is a variable initialized to 1, how many times the following loop be executed:

```
while(c>0 && c<60)
```

```
{  
c++;  
}
```

- 59
- 60
- 61
- none of the above

Q.21.Which of the following have the fastest access time?

- Magnetic Tapes
- Magnetic Disks
- Semiconductor Memories
- Compact Disks

Q.22.DMA stands for:

- Direct Memory Allocation
- Distinct Memory Allocation
- Direct Memory Access
- Distinct Memory Access

Q.23.It is better to buffer a table when

- When a table is read infrequently
- When a table is linked to check tables

- When a table is read frequently and the data seldom changes
- When a single record is to be picked up

Q.24.Array subscripts in C always start at:

- 1
- 0
- 1
- Value provided by user

Q.25.Which type of commands in DOS needs additional files for their execution?

- Batch Commands
- Internal Commands
- External Commands
-

Q.26.The Operating System is responsible for:

- Controlling peripheral devices such as monitor, printers, disk drives
- Provide an interface that allows users to choose programs to run and to manipulate files
- Manage users' files on disk
- All of the above

Q.27.RAM stands for

- Read Access Memory
- Read After Memory
- Random Access Memory
- Random After Memory

Q.28.A company wishes to connect two sites in different parts of the country together.

It is

decided to use the telephone system. What device should be connected to the fileservers on each site?

- Router
- Modem
- Switch
- Hub

Q.29.What is the Protocol used for the Internet?

- IPX/SPX
- NetBIOS/NetBEUI
- CDMA/CA
- TCP/IP

Q.30.A floppy disk is consisting of 40 tracks, each track contains 100 sectors, and the capacity of a sector is 512 bytes, what is the approx. size of that disk?

- 1 MB
- 2 MB
- 4 MB
- 8 MB

Q.31.Choose the answer which best describes the term Primary Key:

- The Primary Key is a field that contains data that can be duplicated.
- The Primary Key is a field that contains data that is unique.
- The Primary Key is a field that is never associated with any field in other tables.
- The Primary Key field is a concept used only in Microsoft Access.

Q.32.Which technique is used to reduce the size of a file:

- Compression
- Decompression
- Encryption
- Decryption

Q.33.BIOS stands for

- Binary Input Output Set
- Binary Input Output System
- Basic Input Output Set
- Basic Input Output System

Q.34.What is the binary equivalent of a decimal number 68:

- 1000100
- 1100100
- 1000010
- 1000001

Q.35.The declaration void fun(int) indicates the fun is a function which:

- has no arguments
- returns nothing
- both a and b
- none of the above

Q.36.Assembly language to machine language translation is:

- One-to-One
- One-to-Many
- Many-to-One
- Many-to-Many

Q.37.An RDBMS is a:

- Remote DBMS
- Relative DBMS
- Reliable DBMS
- Relational DBMS

Q.38.Maximum size of IP address is:

- 12 bits
- 24 bits
- 32 bits
- 48 bits

Q.39.The overall logical structure of a [database](#) can be expressed graphically by:

- Data Flow Diagram
- Flow Chart
- Directed Graph
- Entity-Relationship Diagram

Q.40.What is the final value of sum?

```
main ()
{
int sum=1;
for(;sum<=9;)
printf("%d\n", ++sum);
}
```

- 9
- 10

- 11
- none of the above

Q.41.Cache memory enhances:

- memory capacity
- memory access time
- secondary storage capacity
- secondary storage access time

Q.42.Out of the following which is not valid network topology:

- Bus
- Star
- Circle
- Tree

Q.43.CARRY, in a half-adder, can be obtained using:

- OR gate
- AND gate
- EX-OR gate
- EX-AND gate

Q.44.The memory that requires refreshing of data is:

- SROM
- DROM
- SRAM
- DRAM

Q.45.A gigabyte represents:

- 1 billion bytes
- 1000 kilobytes
- 230 bytes
- 10 megabytes

Q.46.The minimum number of bits required to represent numbers in the range:28 to +31 is-

- 5
- 6
- 7
- 8

Q.47.Which bus carries information between processors and peripherals?

- Data bus
- Control bus
- Address bus
- Information bus

Q.48.Which [part of the computer](#) perform arithmetic calculations?

- Control unit
- Registers
- ALU
- CPU

Q.49.The minimum number of bits required to store the hexadecimal number FF is:

- 2
- 4
- 8

- 16

Q.50.A UPS:

- increases the storage capacity of a computer system
- increases the processor speed
- provides [backup](#) power in the event of a power cut\
- none of the above

[Forex Chart](#) [Monitoring](#) [Monitor](#) [Performance](#) [Windows Xp](#) [infolinks](#)

META TAGS:- TTA COMPUTER ENGINEERING SOLVED PAPERS | TTA SAMPLE PAPERS | TTA LAST 5 YEAR PAPERS | TTA QUESTION PAPERS | TTA PREVIOUS YEAR PAPERS | TTA LAST 5 YEAR PAPERS | TTA LAST 10 YEAR PAPERS | TTA PREVIOUS 10 YEAR PAPERS | TTA SAMPLE PAPERS | TTA GUESS PAPERS | TTA GUESSING PAPERS | TT SOLVED PAPERS | TTA STUDY MATERIALS | TTA STUDY NOTES | TTA MODEL PAPERS | TTA UNSOLVED PAPERS | TTA GUESSING PAPERS | TTA PAPERS DOWNLOAD | DIONLOAD TTA EXAM PAPERS IN PDF | TTA OLD QUESTION PAPERS | TTA OLD EXAM PAPERRS |

Posted by [AMIT DWIVEDI](#) at 08:32

+2 Recommend this on Google

Labels: [BSNL TTA EXAM PAPERS](#), [BSNL TTA OLD EXAM PAPERS](#), [TTA COMPUTER ENGINEERING EXAM PAPER](#), [TTA EXAM QUESTION PAPERS](#), [TTA PREVIOUS YEAR SOLVED PAPERS](#), [TTA SOLVED PAPERS](#)

[Free Samples](#) [Performance Management](#) [Virus protection software](#)
[Messenger Bags](#) [Performance Review](#) [Forex Chart](#) [infolinks](#)

0 comments:

Post a Comment

Enter your comment...

Comment as: [Google Account](#)

[Publish](#) [Preview](#)

[Newer Post](#)

[Home](#)

[Older Post](#)

