

SNAP 2007 Analysis



Please find here questions being reproduced from the SNAP 2007 test. The same have been collected purely on the basis of memory from PT students and faculty who had taken the test.

Please go through the questions and the answers provided and the detailed analysis provided at the end. Also given are the expected cut-offs for various SNAP allied institutes.

General Awareness[®]

1. The leading brand of artificial sweetener in India, 'Sugar Free' is owned by

Ans.Cadila

2. Monsoon is caused by

Ans.Seasonal reversal of winds

3. An Indian company manufacturing automobiles for Mitsubishi is

Ans.Hindustan Motors

4. The name "Koneru Humpy" is associated with which of the following sport?

Ans.Chess.

5. The new coin 'Rupiya' was issued for the first time by

Ans.Sher Shah Suri.

6. One of the following allows an individual to start and continue to share regularly any of his/her own personal experience, knowledge, opinion or thought with the internet community?

Ans.Blog

7. Phishing is

Ans.A fraudulent way of getting the PIN and bank passwords using emails

8. In the sports world, the sobriquet 'Indo-Pak Express' is applied to

Ans.Rohan Bopanna and Aisam-Ul- Haq Quareshi

9. A film that has not been directed by Mira Nair is

Ans.Earth

10. In banking terminology, CRR means

Ans.Cash Reserve Ratio

11. Some of the large deals entered into by IT majors in India (all are billion dollar deals) are listed here as options. Which one is not?
Ans.Infosys-ABN AMRO
12. A suicide car bomb caused havoc in England in July 2007 at the which airport
Ans.Glasgow
13. Pakistan has signed Free Trade agreement (FTA) and a five year investment package with
Ans.China
14. Major oil finds in India have been reported in
Ans.Krishna Godavari Basin
15. The propagation of radio signals is greatly influenced by
Ans.The ionosphere
16. According to Dun & Bradstreet which one of the following is the largest employer among Indian ITES and BPO companies?
Ans.Genpact
17. "In God we trust, the rest have to bring data on the table." This statement was made by the famous industrialist
Ans.Narayan Murthy
18. The runner-up in the recent Vice-Presidential election was
Ans.Dr. Najma Heptullah
19. Which of the following is not provided in the constitution?
Ans.Planning Commission
20. When did Governor General's rule end in India
Ans.26th January 1950
21. The following newspaper was voted as the largest selling newspaper in the world
Ans.The Times of India
22. Which of the following countries is the top source of FDI inflows into India at present?
Ans.Mauritius
23. The human cell contains
Ans.46 chromosomes
24. The three largest economies in the world (year 2006) were
Ans.USA, Japan, & Germany
25. Identify an entry that is reversed in terms of the forex rates for US Dollar on a day recently.
Ans.1 US \$ = •1.42
26. Starbucks, the coffee chain retailer's name is inspired from which book
Ans.Mobydick
27. A major US toy manufacturer which suffered a breakdown in supply chain from China on account of legally unacceptable toxic substances in its products is
Ans.Mattel Toys

28. "Bollywood" name has been granted as a trademark to which US based Media and Entertainment company by Indian Trademark Registry?

Ans.Disney Enterprises

29. Lakshmi Mittal, the famous NRI industrialist, is partnering with Govt. of India for the following big project:

Ans.Oil Refinery

30. Tyeb Mehta, Nand Lal Bose and are

Ans.Painters

31. Zapak Digital Entertainment (a gaming venture) belongs to which business group?

Ans.Anil Dhirubhai Ambani Enterprises

32. In August 2007, Chennai High Court passed a landmark judgment that may have far reaching consequences on pharmaceuticals industry, dismissing a writ petition filed by a company. Name it.

Ans.Novartis

33. The busiest port in the world today is

Ans.Port of Singapore

34. In recent months the monks of Myanmar marched the streets of Yangon in hundreds

Ans.to protest against the government that was ruling

35. To recover the national loss suffered by small investors in the IPO allotment scam from the National Securities Depository Services Ltd & Central Depository Services Ltd. and eight depository participants, a second interim order was passed by

Ans.SEBI

36. Indian Broadcasting Service was renamed in 1936 as :

Ans.All India Radio.

37. Which of the following is not a principal organ of the UNO?

Ans.Trusteeship Council

38. Who was the composer of the classical composition 'Moonlight Sonata'?

Ans.Ludwig Van Beethoven

39. During the year 2006-07 Indian Railways earned a profit of approximately

Ans.Rs. 20,000 crores

40. Egg is a rich source of nutrients except:

Ans.Vitamin C.

General English

DIRECTIONS for Questions (41-46): Read the following passage and answer within its context.

The passages was about Children's Curiosity, and Importance of asking questions for the Scholars. It discussed that the questions asked by the Scholars are too minute and specialized for the common man to understand without years of explanation.

41. Common people consider some of the questions asked by scholars as unimportant

Ans.scholars ask very minute, specialized questions beyond the comprehension of the common man.

42. In the statement 'that is mainly what a university is for' 'that' refers to

Ans.the aim and scope of the university to provide an opportunity to curious minds to find out the answers to their questions.

43. According to the passage the general public respects

Ans.any useful invention.

44. The writer compares the scientist to

Ans.a historian and mountain climber.

45. The primary function of a scholar is different from the search for a cure for cancer because

Ans.the primary function of a scholar is satisfaction of his mental curiosity, while research involving a cure for cancer demands a constant, systematic and planned pursuit by several scholars.

46. Idle curiosity means

Ans.casual curiosity.

47. Find the correct match of definition/meaning with usage for the word:

WOULD

definition / meaning

- 1) willingness
- 2) obstinacy persistence
- 3) determination
- 4) improbable or real condition

Usage

- 5) He would go for a walk even when it was raining.
- 6) He would do as you say.
- 7) He beat the ox, but it wouldn't move.
- 8) If you came across a snake what would you do?

Ans.1-6, 2-7, 3-5, 4-8

48. Choose the most appropriate passive construction of the sentence:

'He is doing his job well.'

Ans.His job is done well by him.

49. There are three underlined words below, followed by their usages. Determine the sentences, in which the use of words is correct or appropriate.

Pray. Prey. Prying

- A. If you pray with faith, they say, it will be answered.
- B. He has fallen a prey to cheats
- C. Prying into the affairs of others is bad.

Ans.A, B and C

Directions for Questions (50-54): The following is an excerpt from a recent article by David Ewing Duncan. Read the passage and answer the questions within its context.

The passage was about Eye Surgeon Virendar Sangwan, s perfected procedure to surgically implant Corneas grown in a Petri dish from stem cells. The passage further discussed on the reverse engineering and generic versions of original versions.

50. According to the article Sangwan-Vemuganti team's cutting-edge procedure of implanting cornea grown from stem cells is considered a major advancement by the experts because

Ans. They derive stem cells from tissues of living adults and grow cells in labs.

51. Sangwan-Vemuganti procedure is carried out on

Ans. Patients with damaged corneas

52. The world recognizes this Indian innovation because Indian scientists are normally known

Ans. To be good at analysing and finding out a method of how an existing drug is made.

53. The pathologist, Vemuganti, started growing cornea in a petri dish

Ans. By experimenting with procedures published in journals

54. In the context of the passage choose the correct set of meanings for the words: 'platform' and 'generic'

Ans. Methodology; without a brand name

55. Choose the option which is closest in meaning to the word

SUBTLE

Ans. Innocent

56. The following sentence has a missing punctuation mark, choose the right answer. My mother who is from the village is very superstitious.

Ans. Comma

57. For the pair of sentences below choose the right option.

1. Those are them.
2. Those are they.

Ans. The first sentence has an error.

Directions for Questions (58-62): Read the following passage and answer within its context.

It was a Passage on TRIP and Global Trade Rules for the protecton of copyright patents, industrial designs, trade secrets etc. It also discussed the conflicting approaches of CBD and TRIP.

58. The author points out that intellectual property rights and their administration mechanism

Ans. Is throttling the interest of global bio-diversity

59. Which of the following has not been said by the author in the passage?

Ans. The author is supportive of international conventions and treaties such as TRIPs, CBD etc.

60. Out of the countries that signed CBD, the percentage of those that signed the TRIPs also, is

Ans. 76.5

61. According to the author, a higher-yield seed variety is not always welcome as it also ultimately leads to

Ans. Monopoly of developed countries.

62. As per the TRIPs agreement not much differentiation is made between a developed country such as the USA and an undeveloped country such as Sudan. This is

Ans. Definitely true

63. Identify the grammatically correct sentence.
Ans.You should at once report it to the authority concerned.

64. A single word for 'Speak falsely with deliberate intent' is
Ans.prevaricate

65. Which two sentences in the following convey the same idea?
1. Wasn't there any checking at the airport?
2. I want to know if there was any checking at the airport.
3. I wonder if there should have been any checking at the airport?
4. There should have been checking at the airport.

Ans.2,3

66. Identify the option with the correct spelling.
Ans.pediatrics

67. Find the correct match of grammatical function with usage for the word:
AFTER

<u>Grammatical function</u>	<u>Usage</u>
1) adjective	5) You may go after having your lunch ®
2) adverb	6) It appears to be the after effect of the disease
3) conjunction	7) Many graduates are hankering after jobs
4) preposition	8) He came soon after

Ans.1-6,2-8,3-5,4-7

68. Neophyte is the opposite of
Ans.veteran

69. Find the **maximum** number of times that any one of the given words fits the set of sentences.
disabled **flimsy** **crippled** **lame**
1) Don't make excuses.
2) Liberalization may have smaller manufacturers.
3) Being a defaulter at the stock exchange makes him a duck.
4) A person may limp.

Ans.in two sentences

70. Which of the following does not make a sensible word/phrase when added to the given word? FIRE
Ans.Sstick

71. Arrange the sentence 1,2,3,4 to form a logical sequence between sentences I and II. Choose the alternative where the four combinations make a meaningful sentence.

- I We all value having the freedom
- 1) which many of us fail to honour
 - 2) to make the choices we want in our careers
 - 3) but with great freedom comes great responsibility
 - 4) so most companies fall prey to the policies which become rigid
- II and that's probably one reason we find most companies not following what they preach

Ans. 2,3,1,4

Directions for Questions (72-74): Read the edited excerpt of an article by NELSON VINOD MOSES and answer the questions in this context.

This was a passage on entrepreneurial minds with a social conscience. An example of Ashwin Naik was discussed in Detail. Thw wide market acceptance and easy funding available for such modules was also discussed in the same passage.

72. Identify the appropriate business model of the kind of enterprise described by the author.

Ans.Setting up enterprises for social causes for profit and expand rapidly

73. Which of the following companies does not illustrate the idea explained by the author?

Ans.Acumen Fund

74. According to the author, which of the following options describes 'for profit' entrepreneurs most appropriately?

Ans.Those who work towards getting financial returns on social business by expanding quickly.

75. A contextual usage is provided for the word below. Pick the word that is most inappropriate.

MALINGER: The young man made it a point to malingering inspite of the assigned work load.

Ans.Laze

76. The following is a scrambled sentence with the segments marked 1,2,3 and 4. Choose the alternative with the order of segments that best reconstruct the sentence.

1. For all the padre's rhetoric about the English as God's Chosen People, the padre had a whole tribe of Anglo-Indian first cousins.
2. Padre Rotton was an even more striking case.
3. by various Indian wives, all of whom were at that moment engaged in fighting on the rebel side in Avadh, where they took an active part in besieging the British Residency in Lucknow.
4. These included James Rotton who could not speak English and the twenty two Muslim sons of his convert cousin, Felix Rotton

Ans.2,1,4,3

77. Choose the sentence in which the given word is used correctly (grammatically and semantically)

ALMOST

Ans.As I crossed the road a scooterist almost hit me.

78. In the following sentence choose the erroneous segment.

A

B

C

We took a taxi so we would be on time for the meeting

Ans.No error

79. Find the ODD one out from the group of words which are related in some way or the other

Ans.cadence

80. Fill in the blanks with the correct alternative.

Caw is to crows as is to cows

Ans.bellow

Quantitative and Data Interpretation & Sufficiency

81. In 4 years, the SI on a certain sum of money is $\frac{7}{25}$ of the principal. What is the annual rate of interest?

Ans.7%

92. Thirty days are in September, April, June and November. Some months are of thirty one days. A month is chosen at random. Then its probability of having exactly three days less than maximum of 31 is

Ans. $\frac{3}{48}$

83. Two persons are climbing up on two moving escalators which have 120 steps. The ratio of 1st person's speed to that of 1st escalator is 2:3 (steps). The ratio of 2nd person's speed to that of 2nd escalator is 3:5 (steps). Find the total number of steps they both have taken together.

Ans.93

84. The table below shows the temperatures in degrees Fahrenheit in a city over one week.

Noontime Temperature!						
Mon	Tue	Wed	Thu	Fri	Sat	Sun
66	78	75	69	78	77	70

If m represents the median temperature, f represents the temperature that occurs most often, and a represents the average (arithmetic mean) of the seven temperatures, which of the following is the correct order of m , f , and a ?

Ans. $a < m < f$

85. Inside a triangular park, there is a flower bed forming a similar triangle. Around the flower bed runs a uniform path of such a width that the sides of the park are exactly double the corresponding sides of the flower bed. The ratio of areas of the path to the flower bed is:

Ans.3:1

86. Consider the following piecewise definition of the function f .

$$f(x) = \begin{cases} 3 - x, & \text{if } x < 0 \\ x^2 + 2, & \text{if } x \geq 0 \end{cases}$$

Evaluate $f(-3)$.

Ans.6

87. A special lottery is to be held to select a student who will live in the only deluxe room in a hostel. There are 100 Year-III, 150 Year-II, and 200 Year-I students who applied. Each Year-III's name is placed in the lottery 3 times; each Year-II's name, 2 times; and each Year-I's name, 1 time. What is the probability that a Year-III's name will be chosen?

Ans. $\frac{3}{8}$

88. The average of nine numbers is M and the average of three of these is P . If the average of remaining numbers is N , then

Ans. $3M = 2N + P$

89. The intersection of two cubes cannot be

Ans.cube

90. In a factory, each day the expected number of accidents is related to the number of overtime hour by a linear equation. Suppose that on one day there were 1000 overtime hours logged and 8 accidents reported and on another day there were 400 overtime hours logged and 5 accidents. What is the expected number of accidents when no overtime hours are logged?

Ans.3

91. A rainy day occurs once in every 10 days. Half of the rainy days produce rainbows. What percent of all the days do not produce rainbow?

Ans.95%

92. Bags I, II and III together have ten balls. If each bag contains at least one ball, how many balls does each bag have? Decide whether the data given in the statements are sufficient to answer the question.

Statement (1): Bag I contains five balls more than bag III. Statement (2): Bag II contains half as many balls as bag I

Ans.BOTH statements (1) and (2) TOGETHER are sufficient to answer the question asked, but NEITHER statement ALONE is sufficient to answer the question asked

93. Area of a square natural lake is 50 sq. kms. A diver wishing to cross the lake diagonally, will have to swim a distance of:

Ans.None of these

94. If $n = 1 + x$, where x is the product of 4 consecutive positive integers, then which of the following is/are true?

1. n is odd; 2. n is prime 3. n is a perfect square

Ans.1 and 3 only

95. How many arrangements can be formed out of the letters of the word EXAMINATION so that vowels always occupy odd places?

Ans.86400

96. In a school drill, a number of children are asked to stand in a circle. They are evenly spaced and the 6th child is diametrically opposite the 16th child. How many children are made to stand in the circle?

Ans.20

97. A man purchased 40 fruits; Apples and oranges for Rs.17. Had he purchased as many oranges as apples and as many apples as oranges, he would have paid Rs.15/-. Find the cost of one pair of an apple and an orange.

Ans.80 paise

98. The number 311311311311311311 is

Ans.neither divisible by 3 nor by 11

99. A man earns 6% SI on his deposits in Bank A while he earns 8% simple interest on his deposits in Bank B. If the total interest he earns is Rs.1800 in three years on an investment of Rs.9000, what is the amount invested at 6 %?

Ans.6000

100. Two identical trains A and B running in opposite directions at same speed take 2 minutes to cross each other completely. The number of bogies of A are increased from 12 to 16. How much more time would they now require to cross each other?

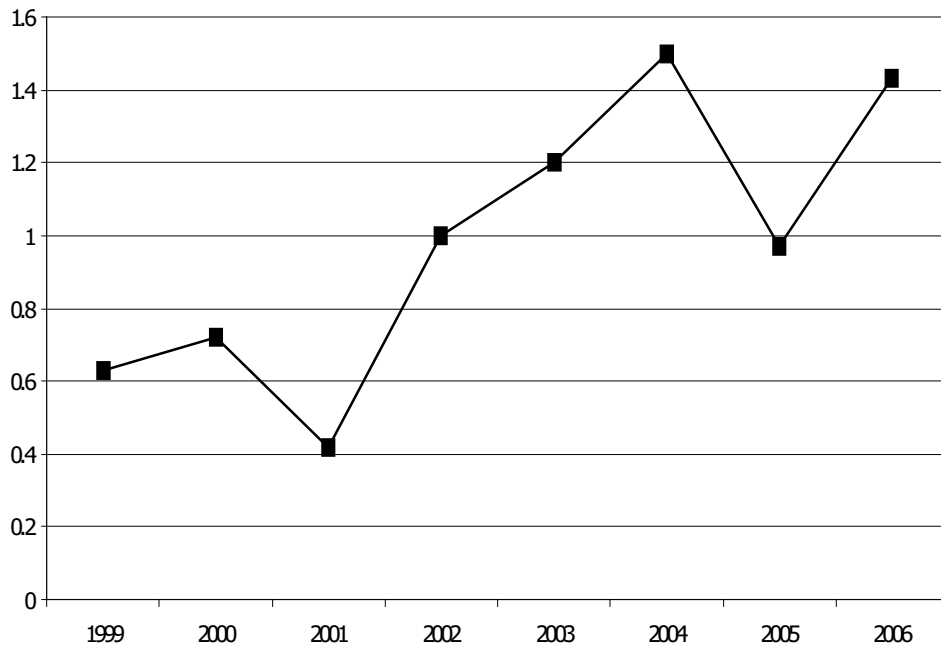
Ans.20s

101. A ladder is lying against a wall which is 5 metres high. If the ladder slips 2 metres away from the wall, the top of the ladder touches the foot of the wall. The length of the ladder is

Ans.5.25 m

Directions for Question No (102 – 104):

The following line graph shows the ratio of the wheat production to rice production of a state in India over a period 7 years from 1999 – 2006. Answer the questions based on this data.



102. If the rice production in 2003 was 4 lac tons what was its wheat production during 2003?

Ans.4.8 lac tons

103. In how many years wheat production was more than the rice production?

Ans.3

104. If the total annual grain requirement (wheat and rice together) of the state is 5 lac tons and if the rice production during 2001 was 3 lac tons, how much grain had to be imported from the other state of India to fulfill the requirement?

Ans.0.65 lac tons

105. The profits of Biscuits India Ltd soared by 32% in the year 2006 – 07 as compared to year 2005 – 06. By what % did Biscuits India's Sales increase in 2006 – 07 compared to the previous year?

(Assume: Profit = Sales – Expenses)

Decide whether the information given in the two statements is sufficient to solve the problem.

Statement (1): Expenses in 2006 – 07 were Rs 1,400 crores, as compared to Rs 1,220 crores in 2005 – 06

Statement (2): Sales in 2006 – 07 were Rs 4,300 crores

Ans.Both statements, taken together, are sufficient to answer the question, but neither of them alone is sufficient

Directions for Question No (106 – 108):

Use the table about the speed of a train over a 3-hour period. The time count does not begin from starting of train.

Time (Minutes)	0	30	45	60	90	120	150	180
Speed at given time (in km/hour)	40	45	47	50	55	60	65	70

106. During the three-hour period shown in the table, the speed of the train increased by

Ans. 75%

107. At time t , measured in minutes after the beginning of the time period, which of the following gives the speed of the train in accordance with the table?

Ans. $40 + t/6$

108. How fast was the train travelling $2\frac{1}{2}$ hours after the beginning of the time period?

Ans. 65 km/hr

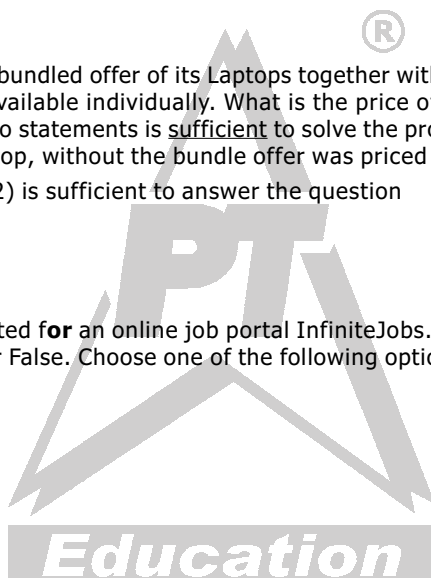
109. In March 2007, Computers Ltd. made a bundled offer of its Laptops together with Deskjet printers to boost Sales, though both the Laptop and the printer were also available individually. What is the price of the Printer, if purchased separately? Decide whether the information given in the two statements is sufficient to solve the problem. Statement (1): The bundled offer price was Rs 42,600 Statement (2): The Laptop, without the bundle offer was priced at Rs 39,400

Ans. Any one of the two statements (1) or (2) is sufficient to answer the question

Directions for Question No (110 – 113):

The following chart presents the data collected for an online job portal InfiniteJobs.com. For each Question, there are two Statements, each of which could be either True or False. Choose one of the following options as an answer:

- a. Only [X] is True
- b. Only [Y] is True
- c. Both [X] and [Y] are True
- d. Neither [X] nor [Y] is True



Year	Category	Number of Registrations	Number of Candidates who posted their CV's	Number of Candidates short-listed by Employers	Number of Offered Jobs
2004	Technical	61,205	59,981	684	181
	Managerial	19,236	15,389	138	48
2005	Technical	63,298	60,133	637	115
	Managerial	45,292	40,763	399	84

110. **Statement X:** The percentage increase in number of Registrations from 2004 to 2005 is higher for Managerial candidates than for Technical candidates **Statement Y:** The overall Registrations have grown by more than 25%

Ans. c

111. **Statement X:** The percentage of drop-outs (from Registration stage to posting CV's) had decreased from 2004 to 2005 for Managerial category

Statement Y: The percentage of drop-outs was higher for Technical than for Managerial category in 2005

Ans. a

112. **Statement X:** The success rate of candidates getting short-listed based on CV's is higher for Managerial category than for Technical category in 2005.

Statement Y: The success rate of candidates getting short-listed based on CV's is better for Managerial category in 2005 than in 2004.

Ans. b

113. **Statement X:** In 2004, the number of candidates offered jobs as a proportion of the number of CV's posted was higher for Technical than for Managerial candidates

Statement Y: In 2004, among those short-listed by Employers, the Technical category had a higher success rate in securing jobs than the Managerial category

Ans. d

Directions for Question No (114 – 116): The following table gives cost data of select stock prices on 3rd Dec 2003 in two markets, BSE of India and NQE of Kya Kya island. Closing stock refers to the price at the close of trading hours and opening stock to the price at the beginning of the day. The currency of Kya Kya is # and the exchange rate is # = Rs 11.

3 rd Dec 2003				
	Closing		Opening	
	BSE (Rs)	NQE (in #)	BSE (Rs)	NQE(in #)
SIFY	247	22	232	21
INFY	115	10.5	105	9.5
Wipro	65	6.5	60	5.5
TCS	444	40	450	40.5

114. Which share and which market showed the highest % increase on 3rd Dec 2003?

Ans.Wipro on NQE

115. Arbitrage means buying in one market and selling simultaneously in another market. If Mr. Ghosh Babu were to buy a share at the opening price on one exchange and be able to sell it at the opening price on the other exchange, on which share does he make maximum % profit?

Ans.TCS

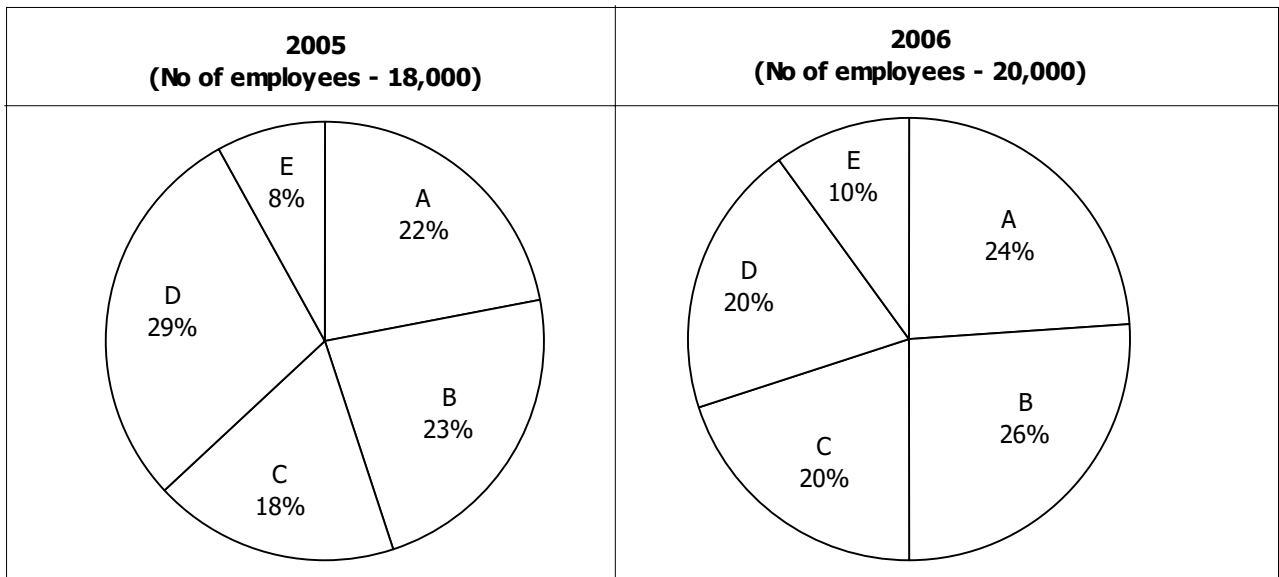
116. In an M&A deal SIFY is purchased by its parent company SATYAM which purchases 15% of SIFY's equity shares. Total SIFY's equity shares is 1 million. How much does Satyam pay in Rs. for the stake if 50% of its purchases were on BSE's operating price and balance on BSE's closing price?

Ans.36million

Directions for Question No (17 – 120):

The following pie-charts give the percentage distribution of employees in different Departments in XYZ Company Ltd. during the years 2005 and 2006. Answer the questions using this data.

A-Administration; B-Operations; C-Sales & Marketing; D-Finance & Accounts; E-Corporate HQ



117. If the average monthly salary of employees in Administration was Rs 12,000 in 2005, what was the approximate total Salary expense of Administration in 2005?

118. What is the percentage increase in No of employees in Sales & Marketing?

Ans.23.45%

119. In which Dept is the variation in strength the maximum in 2006?

Ans.E

120. If 300 employees left Operations at the end of 2005, how many joined in 2006?

Ans.1360

Analytical & Logical Reasoning Section

121. You have three chests in front of you. The first chest is labeled "GOLD", the second is labeled "SILVER" and the third is labeled "GOLD OR SILVER". You have been told that all the labels are on the wrong chests and that one chest contain gold coins, one contains silver coins and one contains bronze coins. How many chests do you need to open to deduce which label goes on which chest?

Ans.1

122. How many minutes before 12 noon is it when it is 27 minutes past 10 am?

Ans.93

Directions for Question No (122-124): Read the following passage and answer the questions.

An employee has been assigned the task of allotting offices to six of the staff members. The offices are numbered 1 - 6. The offices are arranged in a row and they are separated from each other by six foot high dividers. Hence voices, sounds and cigarette smoke flow easily from one office to another.

Miss Ruby needs to use the telephone quite often throughout the day. Mr. Minhas and Mr. Brar need adjacent offices as they need to consult each other often while working. Miss Harsha is a senior employee and has to be allotted the office number 5, having the biggest window.

Mr. Dongre requires silence in the offices next to his. Mr. Tanjore, Mr. Minhas and Mr. Dongre are all smokers. Miss Harsha finds tobacco smoke allergic and consequently the offices next to hers are to be occupied by non-smokers.

Unless specifically stated all the employees maintain an atmosphere of silence during office hours.

123. The ideal candidate to occupy the office furthest from Mr. Brar would be

Ans.Mr. Dongre

124. The three employees who are smokers should be seated in the offices.

Ans.1,2 and 3

125. In the event of what occurrence, within a period of one month since the assignment of the offices, would a request for a change in office be put forth by one or more employees?

Ans.The installation of a noisy teletype machine by Miss Harsha in her office.

126. Shankar and Jwala are both members of a Youth club, though they are not speaking to each other and refuse to work with each other. Chuya, the club president, is appointing members to the fundraising committee, but she has resolved that she will not appoint anyone without his or her explicit consent. Shankar tells Chaya, "I will not consent to appointment on that committee unless I know whether Jwala is to be a member of it." And Jwala says, "I will not consent to be a member of that committee unless I know whether Shankar will be appointed to it."

If all three of these people stick by these resolutions, then:

Ans.Either one of them can be appointed, but not both.

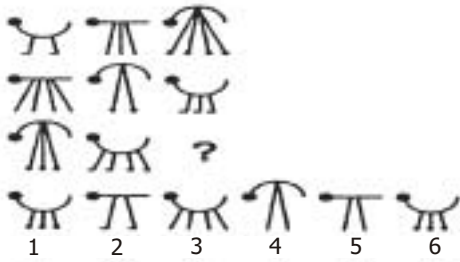
127. A bank customer had Rs. 100 in his account. He then made 6 withdrawals, totaling Rs. 100. He kept a record of these withdrawals, and the balance remaining in the account, as follows:

Withdrawals	Balance left
Rs.50	Rs.50
Rs.25	Rs.25
Rs.10	Rs.15
Rs.8	Rs.7
Rs.5	Rs.2
Rs.2	Rs.0
<hr/>	
Rs.100	Rs.99

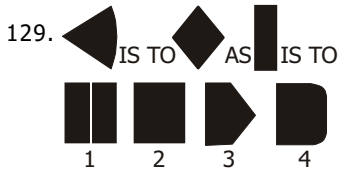
So, why are the Totals not exactly right?

Ans.The two totals need not be equal.

128. Which image from the bottom row should replace the question mark?

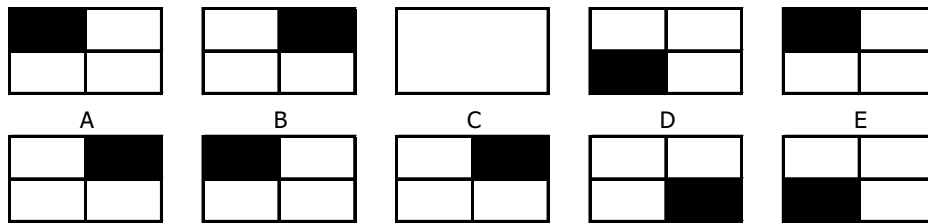


Ans.2



Ans.2

130. Which pattern from the bottom line (A, B, C, D or E) is missing from the top line?



Ans.D

Directions for Question No (131-133):

During their school Silver Jubilee Reunion, four alumni were discussing their starting annual salaries back in 1981. The salaries in question were Rupees 40, 50, 60 and 70 thousand per year. Of course the present MD of a private company earned the most. Arvind earned more than Biswajeet, and the doctor earned more than Dhruv the engineer. Chinmay could not remember what he started on. Biswajeet the lawyer did not start on Rs.50,000, nor did Dhruv.

131. What is Chinmay's current profession?

Ans.Doctor

132. What was the Lawyer's starting salary?

Ans.60,000

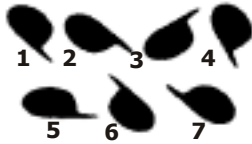
133. Who received the highest starting salary?

Ans.Arvind

134. A man has a job which requires him to work 8 straight days and rest on the ninth day. If he started work on a Monday, the 12th time he rests will be on what day of the week?

Ans.Wednesday

135. From the images below (1-7) find 3 odd ones out.



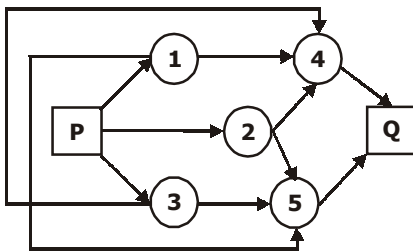
Ans. 2, 3, 7

136. Babloo and Bunty were excitedly describing the result of the First Annual Running Race at Damapur High School. Snehal, Tanmuy and Waman had been the three contestants. "Tanmay won the race; Waman was in second place," reported Babloo. Bunty disagreed. "It was Snehal who won. Tanmay came second."

In fact, neither Babloo nor Bunty had given a correct version of the result as each had made one true and one false statement. What was the actual placing of the three contestants?

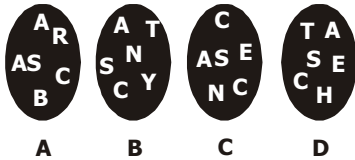
Ans. Snehal, Waman, Tanmay.

137. What is the number of routes from P to Q?



Ans. 6

138. Find the circle, which does not include a word using all letters.



139. It is possible to arrange eight of nine numbers 2, 3, 4, 5, 7, 10, 11, 12, 13 in the vacant squares of the 3 by 4 array shown below so that the arithmetic average of the numbers in each row and column is the same integer.

1			15
	9		
		14	

Which of the nine numbers must be left out when completing the array?

Ans. 10

140. What number will replace the question mark?



Ans. 18

141. Where should the letter 'W' be placed?

 B C D E J K L
 A H M T U V

142. At a family reunion were the following people: one grandfather, one grandmother, two fathers, two mothers, four children, three grandchildren, one brother, two sisters, two sons, two daughters, one father-in-law, one mother-in-law, and one daughter-in-law. But not as many people attended as it sounds. How many were there?

Ans.7

143. On the counter are six squares marked 1, 2, 3, 4, 5, 6. Players are invited to place as much money as they wish on **any one** square. Three dice are then thrown.

- If your number appears on one die only, you get your money back plus the same amount.
- If two dice show your number, you get your money back plus twice the amount you placed on the square.
- If your number appears on all three dice, you get your money back plus three times the amount.
- If the number is not on any of the dice, the operator gets your money.

For example, suppose that you bet one Rupee on square No. 6. If one die shows a 6, you get your Rupee back plus another Rupee. If two dice show 6, you get back your Rupee plus two Rupees. If three dice show 6, you get your Rupee back plus three Rupees.

From a player's point of view, the chance of his number showing on one die is $1/6$, but since there are three dice, the chances must be $3/6$ or $1/2$, therefore the game is a fair one. Of course this is the way the operator of the game wants everyone to reason, for it is quite fallacious.

What is the probable story?

Ans.Operator gets a profit of 7.8% on each Rupee bet.

144. Jaideep was given some money by his mother on his birthday. Jaideep spent all of it in five stores. In each store he spent one rupee more than half of what he had when he came in. How much did he get from his mother?

Ans.Rs. 30

145. Consider the following two statements to be true if they seem to be at variance from commonly known facts. Then decide which of the given conclusions logically follows from two given statements. Select the correct alternative.

Statements:

- All Lawyers are extrovert.
- Some wise men are extrovert.

Conclusions:

- (ja) All lawyers are wisemen.
- (jb) All wisemen are lawyers.
- (jc) Some extrovert are wisemen.
- (jd) All extrovert are lawyers

Ans.Only (jc) follows.

Directions **for Question No (146-148), Use** the data given below to answer the questions.

The following are the results of a survey conducted on a small cross section of students from Symbiosis Group of institutes, to determine the readership of three Magazines. This survey was conducted in Dec 2006.

- Number of students who **read only Business India** was **40**
- 60 students **read only Outlook**
- 110 students **read only India Today**
- 30 students **read all three magazines**
- 20 read **Business India and India Today, but not Outlook**
- 50 read **Business India and Outlook, but not India Today**
- 40 read **Outlook and India Today, but not Business India**

146. What was the total no of students surveyed?

Ans.350

147. How many students did not read Business India?

Ans.None of the above

148. When another survey was conducted in May 2007 with the same set of students, their tastes had changed and the findings were different. All of them read India Today. 120 read Outlook, and no one read Business India. Hence, in May 2007, how many students read only India Today?

Ans.230

149. An ingredient in coffee, known as RTC, has been found to inactivate common cold viruses in experiments. In previous experiments, researchers found that inactivated common cold viruses can convert healthy cells into cancer cells. It can be concluded that the use of coffee can cause cancer.

Which one of the following, if true, most seriously weakens the argument?

Ans.The carcinogenic effect of RTC could be neutralized by the other ingredients found in coffee.

150. A census taker approaches a house and asks the woman who answers the door, "How many children do you have, and what are their ages?"

Woman: "I have three children, the product of their ages is 36, the sum of their ages is equal to the address of the house next door."

The census taker walks next door, comes back and says, "I need more information."

The woman replies, "I have to go, my oldest child is sleeping upstairs."

Census taker: "Thank you, I now have everything I need."

What are the ages of each of the three children?

Ans.9, 2, 2

Symbiosis National Aptitude Test (SNAP)

December 16, 2007

Bird's Eye View

We present to you a brief analysis of SNAP held on 16th December 2007.

The test was exactly on the same pattern as declared by SNAP authorities on the website. There were in all 150 question, divided into four sections with all the questions carrying one mark except for the questions in the 'Analytical and Logical reasoning section' where each question was of two marks. Four answer choices were given for each question. There was a penalty of 25% (of marks allotted to particular question) for each wrong answer marked.

Total Number of Questions	:	150
Total Time	:	120 minutes
The Marking Scheme	:	Differential marking with all questions carrying 1 mark except for questions in 'Analytical & Logical reasoning section' which carried 2 marks. Negative marking of 25% for every wrong answer.
Number of Options	:	4
Overall Difficulty	:	Easy to Moderate
Sectional Breakup	:	The SNAP test pattern was as follows

S No.	Section	No. of Questions	Marks
1	Analytics & Logical Reasoning	30	60
2	General Awareness : General Knowledge, Current Affairs, Business Scenario	40	40
3	Quantitative, Data Interpretation & Data Sufficiency	40	40
4	General English : Reading Comprehension & Verbal Ability	40	40
	Total	150	180

Detailed Analysis

Analytical & Logical Reasoning

The section on 'Analytical & Logical Reasoning' was easy. It was quite surprising as the weightage given to questions of this section was higher than any other section. This section which contained 30 questions was a mixed bag with questions coming right from Quantitative Reasoning to data arrangement. Some other areas from where questions were asked- Syllogisms, Set theory, Logical sequencing, Visual Reasoning and . The questions in this section were of easy to moderate level of difficulty.

Analytical & Logical Reasoning		
Head	No. of Questions	Difficulty level
Set Theory	3	Easy
Quantitative reasoning	7	Easy to Moderate
Visual Reasoning	6	Easy to Moderate
Data Arrangement	9	Easy
Logical Reasoning	2	Easy
Miscellaneous	3	Easy
Total	30	Easy

General Awareness

The second section which had 40 questions on General Awareness was of again easy to moderate level of difficulty. GK was a mix of both- Static as well as Dynamic. Question were on Sports, History, Politics, Business etc. There was no surprise element and all the question were quite manageable if one is in touch with current happenings. The breakup of questions is as follows

General Awareness: General Knowledge, Current Affairs & Business Scenario		
Head	No. of Questions	Difficulty level
Business & Economics.	15	
Sports	2	
Science	5	
Politics	3	
History	4	
Current Affairs	11	
Total	40	Moderate

Quantitative, Data Interpretation & Data Sufficiency

The third section was 'Quantitative and Data Interpretation & Sufficiency', which contained 40 questions on Mathematics, Reasoning, Data interpretation and Data Sufficiency. Question were easy and Data Interpretation (DI) was easiest among all. In DI question were on Tables, Pie-chart and Line graph. Out of 40 questions 20 were on Mathematics, 17 on Data Interpretation and remaining on Data Sufficiency and Logic. The breakup of questions is given as follows in the coming page

Head	No. of Questions	Difficulty level
Maths		
Algebra	4	Easy
Arithmetic	9	Easy
Geometry	4	Easy
Advance Maths	3	Easy
Sub-Total	20	
DI		
Tables	10	Easy
Pie-Chart	4	Easy
Line Ggraph	3	Easy
Sub-Total	17	
DS & Reasoning	3	Easy
Total	40	Easy

Reading Comprehension & Verbal Ability

The last section on Language i.e. 'Verbal Reasoning & Verbal Ability' was easy and a combination of Verbal ability and Reading Comprehension. There were four RC passages, one each one Business & Economics, Science, General and Social. There were in all 19 questions on RC. VA comprised questions on grammar, parts of speech, fill in the blanks, meaning of phrases etc. In all on VA 21 questions were there making total number of questions in this section 40. The breakup of questions is as follows

Verbal Reasoning & Verbal Ability		
Head	No. of Questions	Difficulty level
VA		
Meanings	6	Moderate
Spelling	1	Moderate
Grammar	10	Moderate
Para - Jumbles	2	Easy
FIB	2	Easy
RC	19	Easy
Total	40	Easy

On an average, students could attempt 95-105 questions.

Expected Cut-offs

Institute Name	Expected Cut-offs	Institute Name	Expected Cut-offs
SIBM	92 - 98	SCMHRD*	80 - 87
SIIB	72 - 80	SITM	68 - 75
SCIT	65+	SIOM	68 - 75
SIMS	55+	SIMC	50+
* SCMHRD considers the profile too while giving the call			

