

# STANDARDIZED TEST FOR US COLLEGE ADMISSIONS

Boost your mathematical aptitude, reading and writing skills to qualify the SAT test that will make your dream education come true

## SECTION I

### Analytical Writing

#### ANALYZE AN ISSUE

## SAT Reasoning Test

### General Directions

#### Timing

- You will have 3 hours and 45 minutes to work on this test.
  - There are ten separately timed sections:
  - One 25-minute essay
  - Six other 25-minute sections
  - Two 20-minute sections
  - One 10-minute section
  - You may work on only one section at a time.
  - The supervisor will tell you when to begin and end each section.
  - If you finish a section before time is called, check your work on that section
- You may NOT turn to any other section.
- Work as rapidly as you can without losing accuracy. Don't waste time on questions that seem too difficult for you.

#### Marking Answers

- Carefully mark only one answer for each question.
- Make sure each mark is dark and completely fills the circle.
- Do not make any stray marks on your answer sheet.
- If you erase, do so completely. Incomplete erasures may be scored as intended answers.
- Use only the answer spaces that correspond to the question numbers.
- Use the test book for scratchwork, but you will not receive credit for anything written there.
- After time has been called, you may not transfer answers to your answer sheet or fill in circles.
- You may not fold or remove pages or portions of a page from this book, or take the book or answer sheet from the testing room.

#### Scoring

- For each correct answer to a question, you receive one point.
- For questions you omit, you receive no points.
- For a wrong answer, you lose one-fourth of a point.
- If you can eliminate one or more of the answer choices as wrong, you increase your chances of choosing the correct answer and earning one point.
- If you can't eliminate any choice, move on. You can return to the question later if there is time.
- For a wrong answer to a "grid-in" math question, you don't lose any points.
- The essay is scored on a 1 to 6 scale by two different readers. The total essay score is the sum of the two readers' scores.
- An off-topic or blank essay will receive a score of zero.

The passages for this test have been adapted from published material. The ideas contained in them do not necessarily represent the opinions of the College Board or Educational Testing Service.

#### The Mathematics Section

##### Five-Choice Multiple-Choice Questions

Directions: For this section, solve each problem and decide which is the best of the choices given. Fill in the corresponding circle on the answer sheet. You may use any available space for scratchwork.

1. Emily's school offers 3 English classes and 4 History classes for her to choose from. She must choose 3 of these classes to complete her schedule. If exactly one of these must be an English class, how many different combinations of classes are possible for Emily? 34
- A 7  
B 12  
C 18  
D 21  
E 35

Key: C

2.  $5, 3, \frac{9}{5}, \dots,$

In the sequence above, the first term is 5 and each term after the first is equal to  $m$  times the previous term. Which of the following is true about  $m$ ?

- A  $-3 < m < -1$   
B  $-1 < m < 0$   
C  $0 < m < 1$   
D  $1 < m < 3$   
E  $3 < m < 5$

Key: C

3. If  $a$  and  $b$  are positive integers and  $9(3^a) - 3^b$ , what is  $a$  in terms of  $b$ ?

- A  $b-3$   
B  $b-2$   
C  $b-1$   
D  $b$   
E  $b+2$

Key: B

4. The membership of the Service Club at Madison High School is made up of juniors and seniors. There are 12 more seniors than juniors in the club. If there are  $n$  juniors in the club, then in terms of  $n$ , what percent of the club members are juniors?

- A.  $\frac{n}{n+12}\%$   
 B.  $\frac{n}{2n+12}\%$   
 C.  $\frac{n}{100(2n+12)}\%$   
 D.  $\frac{100n}{n+12}\%$   
 E.  $\frac{100n}{2n+12}\%$

Key: E

5. A class of 20 students borrowed library books for their research projects. Some of the students borrowed 3 books each, and the rest borrowed 2 books each. If a total of 52 books were borrowed, how many of the students borrowed 3 books each?

- A. 8  
 B. 9  
 C. 10  
 D. 12  
 E. 13

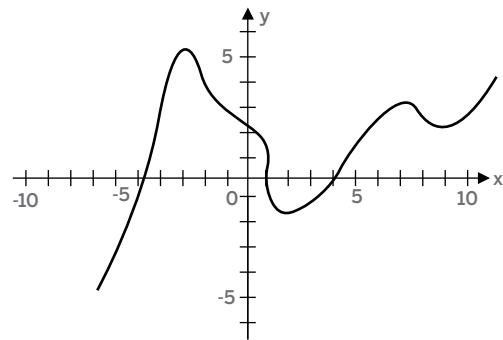
Key: D

6. If  $|x-3|=5$ , which of the following could be the value of  $x$ ?

- A. -8  
 B. -3  
 C. -2  
 D. 2  
 E. 3

Key: C

7.



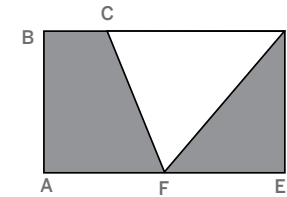
The function  $y=f(x)$  is graphed above. If  $f(x)=1$  and if  $5 < x < 6$ , how many different

values of  $x$  are possible?

- A. One  
 B. Two  
 C. Three  
 D. Four  
 E. More than four

Key: C

8.

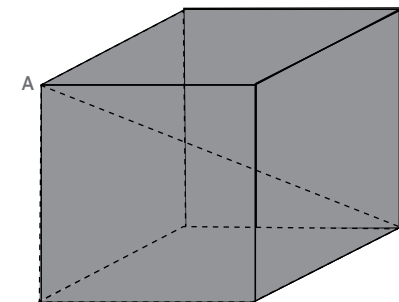


In the figure above,  $ABDE$  is a rectangle and  $F$  is the midpoint of  $\overline{AE}$ . If  $CD = \frac{2}{3}BD$ , what fraction of  $ABDE$  is shaded?

- A.  $\frac{7}{12}$   
 B.  $\frac{3}{5}$   
 C.  $\frac{2}{3}$   
 D.  $\frac{3}{4}$   
 E.  $\frac{5}{6}$

Key: C

9.



The cube above has a volume of 64 cubic inches. What is the length of segment  $\overline{AB}$ ?

- A. 4  
 B. 5  
 C.  $3\sqrt{3}$  (approximately 5.20)  
 D.  $4\sqrt{2}$  (approximately 5.66)  
 E.  $4\sqrt{3}$  (approximately 6.93)

Key: E

10.

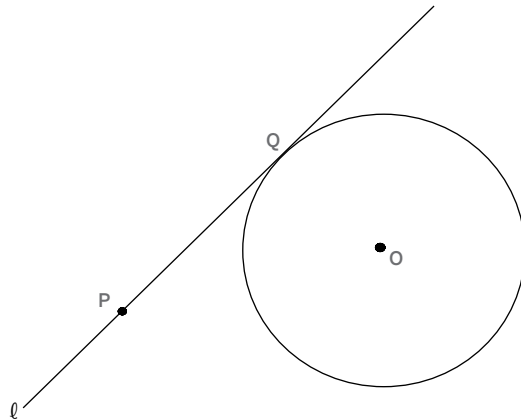


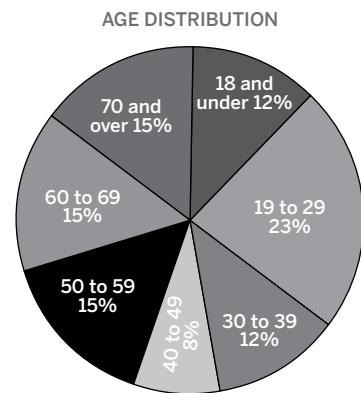
Figure not drawn to scale

In the figure above, the circle has center O and radius 5. If line  $\ell$  is tangent to the circle at point Q and  $PQ=12$ , what is the distance between P and O?

- A 12.5
- B 13
- C 15
- D 17
- E It cannot be determined from the information given.

Key: B

11.



The circle graph above gives the distribution of the ages, in years, for a group of 500 people. Which of the following could be the median age, in years, for this group?

- A 19
- B 25
- C 34
- D 48
- E 55

Key: D

Student Produced Response Questions

For Student-Produced Response questions, use the grids on the answer sheet.

Each of these questions requires you to solve the problem and enter your answer by marking the circles in the special grid, as shown in the examples below. You may use any available space for scratch work.

- Mark no more than one circle in any column.
- Because the answer sheet will be machine-scored, you will receive credit only if the circles are filled in correctly.
- Although not required, it is suggested that you write your answer in the boxes at the top of the columns to help you fill in the circles accurately.
- Some problems may have more than one correct answer. In such cases, grid only one answer.
- No question has a negative answer.
- Mixed numbers such as  $3 \frac{1}{2}$  must be gridded as 3.5 or  $7/2$ . (if 

3	1	/	2
<input type="radio"/>	<input type="radio"/>	<input type="radio"/>	<input type="radio"/>

 is gridded, it will be interpreted as  $3 \frac{1}{2}$ , not  $3 \frac{1}{2}$ .)

- If you obtain a decimal answer with more digits than the grid can accommodate, it may be either rounded or truncated, but it must fill the entire grid. For example, if you obtain an answer such as 0.6666..., you should record your result as .666 or .667. A less accurate value such as .66 or .67 will be scored as incorrect.

Sample grid to record student-produced response questions

5	.	6	7
<input type="radio"/>	<input checked="" type="radio"/>	<input type="radio"/>	<input type="radio"/>
	0	0	0
1	1	1	1
2	2	2	2
3	3	3	3
4	4	4	4
<input checked="" type="radio"/>	5	5	5
6	6	<input checked="" type="radio"/>	6
7	7	7	<input checked="" type="radio"/>
8	8	8	8
9	9	9	9

1. What is the coordinate of the point on a number line that is halfway between the points with coordinates 45 and 52?

Key: 48.5,  $\frac{97}{2}$

2. If  $x$  and  $y$  are positive integers and if  $x^2 - y^2 = 17$ , what is the value of  $xy$ ?

Key: 72

3. In the  $xy$ -plane, line  $\ell$  contains the points (1,1) and (3,t). If  $3 < t < 4$ , what is one possible value for the slope of  $\ell$ ?

Key:  $1 < x < \frac{3}{2}$ ,  $1 < x < 1.5$

4. NUMBER OF PENS BY FACTORY AND TYPE

	Regular	Deluxe
Factory 1	15,400	6,000
Factory 2	10,500	3,000

PROFIT PER PEN BY TYPE

	Profit Per Pen
Regular	\$0.05
Deluxe	\$0.13

Company X manufactures two types of pens at each of two factories. The number of pens manufactured yesterday and the profit per pen are shown in the tables above. According to this data, what was the profit, in dollars, yesterday for all pens produced at Factory 2? (Disregard the dollar sign when gridding your answer.)

Key: 915

The Writing Section

Essay Scoring Guide

The Scoring Guide addresses critical thinking, development of ideas, organization, vocabulary, sentence structure, and mechanics.

Score of 6

An essay in this category is outstanding, demonstrating clear and consistent mastery, although it may have a few minor errors. A typical essay

- effectively and insightfully develops a point of view on the issue and demonstrates outstanding critical thinking, using clearly appropriate examples, reasons, and other evidence to support its position
- is well organized and clearly focused, demonstrating clear coherence and smooth progression of ideas
- exhibits skillful use of language, using a varied, accurate, and apt vocabulary
- demonstrates meaningful variety in sentence structure
- is free of most errors in grammar, usage, and mechanics

Score of 5

An essay in this category is effective, demonstrating reasonably consistent mastery, although it will have occasional errors or lapses in quality. A typical essay

- effectively develops a point of view on the issue and demonstrates strong critical thinking, generally using appropriate examples, reasons, and other evidence to support its position
- is well organized and focused, demonstrating coherence and progression of ideas
- exhibits facility in the use of language, using appropriate vocabulary
- demonstrates variety in sentence structure
- is generally free of most errors in grammar, usage, and mechanics

Score of 4

An essay in this category is competent, demonstrating adequate mastery, although it will have lapses in quality. A typical essay

- develops a point of view on the issue and demonstrates competent critical thinking, using adequate examples, reasons, and other evidence to support its position
- is generally organized and focused, demonstrating some coherence and progression of ideas
- exhibits adequate but inconsistent facility in the use of language, using generally appropriate vocabulary
- demonstrates some variety in sentence structure
- has some errors in grammar, usage, and mechanics

Score of 3

An essay in this category is inadequate, but demonstrates developing mastery, and is marked by ONE OR MORE of the following weaknesses:

- develops a point of view on the issue, demonstrating some critical thinking, but may do so inconsistently or use inadequate examples, reasons, or other evidence to support its position
- is limited in its organization or focus, or may demonstrate some lapses in coherence or progression of ideas
- displays developing facility in the use of language, but sometimes uses weak vocabulary or inappropriate word choice
- lacks variety or demonstrates problems in sentence structure
- contains an accumulation of errors in grammar, usage, and mechanics

Score of 2

An essay in this category is seriously limited, demonstrating little mastery, and is flawed by ONE OR MORE of the following weaknesses:

- develops a point of view on the issue that is vague or seriously limited, demonstrating weak critical thinking, providing inappropriate or insufficient examples, reasons, or other evidence to support its position
- is poorly organized and/or focused, or demonstrates serious problems with coherence or progression of ideas
- displays very little facility in the use of language, using very limited vocabulary or incorrect word choice
- demonstrates frequent problems in sentence structure
- contains errors in grammar, usage, and mechanics so serious that meaning is somewhat obscured

Score of 1

An essay in this category is fundamentally lacking, demonstrating very little or no mastery, and is severely flawed by ONE OR MORE of the following weaknesses:

- develops no viable point of view on the issue, or provides little or no evidence to support its position
- is disorganized or unfocused, resulting in a disjointed or incoherent essay
- displays fundamental errors in vocabulary
- demonstrates severe flaws in sentence structure
- contains pervasive errors in grammar, usage, or mechanics that persistently interfere with meaning

Score of 0

Students will receive a score of zero if they do not write an essay, if their essay

is not written on the essay assignment, or if the essay is deemed illegible after several attempts have been made to read and score it.

#### Essay

The essay gives you an opportunity to show how effectively you can develop and express ideas. You should, therefore, take care to develop your point of view, present your ideas logically and clearly, and use language precisely.

Your essay must be written on the lines provided on your answer sheet—you will receive no other paper on which to write. You will have enough space if you write on every line, avoid wide margins, and keep your handwriting to a reasonable size. Remember that people who are not familiar with your handwriting will read what you write. Try to write or print so that what you are writing is legible to those readers.

You have twenty-five minutes to write an essay on the topic assigned below. DO NOT WRITE ON ANOTHER TOPIC. AN OFF-TOPIC ESSAY WILL RECEIVE A SCORE OF ZERO.

Think carefully about the issue presented in the following quotations and the assignment below.

1. While secrecy can be destructive, some of it is indispensable in human lives. Some control over secrecy and openness is needed in order to protect identity. Such control may be needed to guard privacy, intimacy, and friendship.

Adapted from Sissela Bok, "The Need for Secrecy"

2. Secrecy and a free, democratic government, President Harry Truman once said, don't mix. An open exchange of information is vital to the kind of informed citizenry essential to healthy democracy.

Editorial, "Overzealous Secrecy Threatens Democracy"

Assignment: Do people need to keep secrets or is secrecy harmful? Plan and write an essay in which you develop your point of view on this issue. Support your position with reasoning and examples taken from your reading, studies, experience, or observations.

#### Writing Multiple-Choice Questions

#### Improving Sentences

Directions: For each question in this section, select the best answer from among the choices given.

The following sentences test correctness and effectiveness of expression. Part of each sentence or the entire sentence is underlined; beneath each sentence are five ways of phrasing the underlined material. Choice A repeats the original phrasing; the other four choices are different. If you think the original phrasing produces a better sentence than any of the alternatives, select choice A; if not, select one of the other choices.

In making your selection, follow the requirements of standard written English; that is, pay attention to grammar, choice of words, sentence construction, and

punctuation. Your selection should result in the most effective sentence—clear and precise, without awkwardness or ambiguity.

1. According to the study, as the body ages, the chance that medications will cause harmful side effects are on the increase.  
(A) are on the increase  
(B) are increasing  
(C) has increased  
(D) increase  
(E) increases

Key: E

2. The most versatile skin in nature helps squid ambush prey, avoiding predators, as well as courting mates, and signaling one another.  
(A) avoiding predators, as well as courting mates, and signaling  
(B) avoiding predators, courting mates, and they signal  
(C) to avoid predators, court mates, and for signaling  
(D) avoid predators, court mates, and they signal  
(E) avoid predators, court mates, and signal

Key: E

3. Six stories high, with portholes for eyes and a spiral staircase in each hind leg, is the elephant-shaped building known as "Lucy," which towered over Margate City, New Jersey, since 1881.  
(A) is the elephant-shaped building known as "Lucy," which towered over Margate City, New Jersey, since 1881  
(B) since 1881 it has towered over Margate City, New Jersey, the elephant-shaped building known as "Lucy"  
(C) the elephant-shaped building known as "Lucy" has towered over Margate City, New Jersey, since 1881  
(D) towering over Margate City, New Jersey, since 1881 has been the elephant-shaped building known as "Lucy"  
(E) there is an elephant-shaped building known as "Lucy," and it has towered over Margate City, New Jersey, since 1881

Key: C

4. Male cicadas have a white, drum-like plate called a tymbal on either side of their abdomen, vibrating rapidly to make a variety of calls.  
(A) vibrating  
(B) and vibrates  
(C) and vibrating it  
(D) which they vibrate  
(E) and they make it vibrate

Key: D

5. Researchers have found that the eyes of tropical nocturnal sweat bees are about 30 times more sensitive to light than it is with honeybees.  
(A) it is with honeybees  
(B) those of honeybees  
(C) honeybees can be  
(D) honeybees are  
(E) honeybees

Key: B

6. A war is raging between experts who see psychotherapy as an art as well as them calling for scientifically proven methods.
- (A) as well as them calling for  
 (B) as well as the ones who want  
 (C) or those that are calling for  
 (D) and those who call for  
 (E) and others, wanting

Key: D

7. Where the Illinois and Missouri Rivers feed into the Mississippi, the rivers meander, forming swamps and oxbow lakes and creating a flood plain environment known as the American Bottom.
- (A) forming swamps and oxbow lakes and creating a flood plain environment known as  
 (B) forming swamps and oxbow lakes, creating a flood plain environment known that it is  
 (C) and it forms swamps and oxbow lakes and creating a flood plain environment known that it is  
 (D) form swamps and oxbow lakes and it creates a flood plain environment known as  
 (E) form swamps and oxbow lakes and they create a flood plain environment known as

Key: A

8. As postmaster general, Benjamin Franklin sped up mail service between Boston and Philadelphia, he required post riders to continue day and night, thus making the round trip in six days instead of three weeks.
- (A) Philadelphia, he required  
 (B) Philadelphia, it required  
 (C) Philadelphia and requiring  
 (D) Philadelphia by requiring  
 (E) Philadelphia to require

Key: D

#### Identifying Sentence Errors

Directions: For each question in this section, select the best answer from among the choices given.

The following sentences test your ability to recognize grammar and usage errors. Each sentence contains either a single error or no error at all. No sentence contains more than one error. The error, if there is one, is underlined and lettered. If the sentence contains an error, select the one underlined part that must be changed to make the sentence correct. If the sentence is correct, select choice E. In choosing answers, follow the requirements of standard written English.

1. When a major flood destroyed most of the Hohokam canal networks in 1358, people who had had struggled for centuries to to water their lands at last in the end abandoned them because there was too much water. No error

Key: C

2. In 1937, Louis Agassiz, a Swiss naturalist, proposed the then radical idea that in the not too distant past much of Europe had been had been covered by glaciers. No error

Key: E

3. In 1772, four years before the Declaration of Independence, Mercy Otis Warren published The Adulateur, a satiric play that cast the colonial governor to to be a villain intent on robbing the colony. No error

Key: C

4. The modern roller coaster is descended from a gravity ride called the Russian Mountain, which Was a popular amusement in St. Petersburg as soon as the sixteenth century. No error

Key: D

5. A federal judge ordered a Las Vegas tax advisor to stop selling a book claiming that income taxes are voluntary and that people can lawfully escape them with filing tax returns listing no income. No error

Key: D

#### Improving Paragraphs

Directions: The following passage is an early draft of an essay. Some parts of the passage need to be rewritten.

Read the passage and select the best answers for the questions that follow. Some questions are about particular sentences or parts of sentences and ask you to improve sentence structure or word choice. Other questions ask you to consider organization and development. In choosing answers, follow the requirements of standard written English.

Questions 1 - 2 are based on the following passage.

(1) Many types of frogs hibernate, essentially sleeping through the winter. (2) They protect themselves from the cold by burrowing into the dirt or camping out under piles of leaves. (3) Some frogs are even equipped with mechanisms that allow them to survive being frozen. (4) One type of frog, the wood frog, can survive even when 65% of its total body water turns to ice. (5) These frogs appear to be dead but, it seems miraculous, they are not.

(6) Frozen frogs have extensive ice formation in their body cavities and in the spaces between their cells. (7) The reason that these frogs survive, however, is that no ice forms within their cells. (8) Ice crystals form within cells, they can kill an animal by puncturing certain specialized parts of the cells. (9) These frogs are protected from the harmful effects of freezing by a chemical reaction. (10) When the first ice crystals begin to form on the skin of a hibernating frog, an internal alarm goes off. (11) This causes the frog's cells to fill with glucose. (12) Precisely the opposite occurs in the spaces between the cells. (13) There special proteins promote the formation of ice crystals. (14) This draws water away from the cells so it does not freeze there.

1. In context, which word should be inserted at the beginning of sentence 8?

- (A) Because
- (B) Although
- (C) While
- (D) If
- (E) Since

Key: D

2. Which of the following facts about glucose is most important to add to sentence 11?

- (A) Glucose acts as an antifreeze.
- (B) Glucose can be stored in the liver.
- (C) Glucose is regulated by two hormones, insulin and glucagon.
- (D) Glucose is used by the cells for energy.
- (E) Glucose is a blood sugar found in vertebrates.

Key: A

### The Critical Reading Section

#### Passage-based Reading

Directions: Each passage below is followed by questions based on its content. Answer the questions on the basis of what is stated or implied in each passage and in any introductory material that may be provided.

Questions 1 - 2 refer to the following passage.

The following passage is excerpted from a 2004 novel about a woman who is working as an office assistant in a law firm.

Typing for others is like having a silent woodpecker drilling a hole in your forehead. You are you, in a relatively new skirt that itches at the edges (it's wool and you're allergic), with a firm and historical love for words—Nancy Drew\* on the porch, *War and Peace* one winter—and you are you who has many of your own private thoughts about the ways of the world, and would perhaps jot them down yourself someday, or even say them out loud to a table full of cognac drinkers, but instead you are you who is polite and also, let's get down to basics, need to make a living, and so you are being paid to type the words of others. Of a lawyer named William Mauster. His words go through your head like a TV anchor's cue card.

\*the heroine of a famous series of young-adult books

1. The author mentions Nancy Drew and *War and Peace* in line 4 primarily to
- (A) suggest that the narrator learned to type by reading books
  - (B) allude to some of the narrator's previous jobs
  - (C) show that literature has been important to the narrator for long time
  - (D) show the specific type of book the narrator enjoys
  - (E) indicate that reading is the narrator's favorite pastime

Key: C

2. In the passage, what is the narrator's major complaint about her job?

- (A) Her employer discourages her from reading.
- (B) The words she types lack personal meaning for her.
- (C) Her employer rarely speaks with her about her work.
- (D) She has no interest in the legal profession.
- (E) Typing for others is a job that never seems to stop.

Key: B

Questions 3 - 4 refer to the following passage.

The following passage is excerpted from a book about how scientists understand living things, including human beings.

What is life? One of the greatest achievements of nineteenth- and twentieth-century science was finding the answer to this question. And make no mistake about it, the question is difficult. Aristotle, for example, speculated that magnets might, in some sense, be alive because they moved. For a long time, people believed that there was some kind of "life force"—*élan vital*—that made living things different from the nonliving. Had this turned out to be the case, then the study of living systems would constitute a completely separate branch of science, with no connection to mundane chemistry and physics. Over time, however, we have come to realize that there is nothing singular about the mechanisms of living things. The hydrogen atoms in your body, for example, are the same hydrogen atoms that exist in the ocean, in the sun, and for that matter, in the most distant galaxy. Living things just aren't all that different from everything else. In fact, the great truth that scientists have learned is that life is based on chemistry.

3. The author primarily views chemistry as

- (A) suspect
- (B) foundational
- (C) unchangeable
- (D) irrelevant
- (E) novel

Key: B

4. The author describes chemistry and physics as "mundane" in line 8 primarily to

- (A) suggest that the work chemists and physicists do is usually tedious
- (B) indicate the simplistic nature of most scientific answers to difficult questions
- (C) dispute the importance of these branches of science for studying living things
- (D) contrast these branches of science with a branch that never developed
- (E) emphasize the lack of respect most scientists give to these branches of science

Key: D

Questions 5 - 6 refer to the following passage.

Scientists do not know exactly how a salmon "remembers" the way back to its native stream after an ocean journey possibly lasting several years and covering several thousand miles. They agree, however, that salmon, like homing pigeons, appear to have an innate compass or "search recognition" mechanism that operates independently of astronomical or physical signs. Some scientists theorize that this internal compass uses the infinitely small electrical voltages generated by the ocean currents as they travel through the earth's magnetic field. Others believe that the salmon's homing mechanism may take its cues from the varying salinities of the water or specific smells encountered along the journey.

5. The primary purpose of the passage is to
- (A) dismiss a prevailing scientific opinion
  - (B) compare two similar biological systems
  - (C) suggest possible explanations for a phenomenon
  - (D) defend one theory against alternative theories
  - (E) predict a likely outcome

Key: C

6. The use of quotation marks in the first sentence of the passage signifies that the author
- (A) is not using the word in its literal sense
  - (B) is mildly ridiculing other sources
  - (C) is using a direct quotation from another source
  - (D) is using the word in a highly formal manner
  - (E) is introducing an unfamiliar concept

Key: A

Directions: The passages below are followed by questions based on their content; questions following a pair of related passages may also be based on the relationship between the paired passages. Answer the questions on the basis of what is stated or implied in the passages and in any introductory material that may be provided.

Questions 7-10 are based on the following passages.

The legend of King Arthur and the Knights of the Round Table is one of the most enduring in Western literature. Below, two authors consider the factual foundations of the myth.

Passage 1

The Arthur who has become part of the fabric of our lives today is mostly a creation of medieval times, when troubadours and chroniclers made him into a hero of romance, a noble ruler whose knights were patterns of chivalry. The myth has become so real to us that we tend to forget the existence of an actual, historical Arthur. He may not have been a king in the sense we understand kingship. He may not have been even a particularly good or generous or idealistic man. All we know, in starting out to search for him, is that he must have been a remarkable person, because fame does not come without good reason.

Passage 2

We have no reason to think that Arthur was a territorial ruler, attached to a particular kingdom. It is more likely that he was either a freelance who offered the services of himself and a band of followers to whatever king would pay best, or an overall commander appointed collectively by the kings of the Britons. Britons were capable of taking cooperative action to appoint a commander who could fight

their enemies wherever they appeared. Such a role might fit a phrase in the *Historia Britonum*,\* in which Arthur was said to have fought "along with the kings of the Britons, but he himself was a *dux bellorum* [warrior, or "war duke"].

\* Or *History of the Britons*, probably written in the 9th century.

7. The authors of both passages assume that the legendary King Arthur was
- (A) the leader of a heroic group of knights
  - (B) an actual historical figure
  - (C) a military rather than a political leader
  - (D) the invention of poets
  - (E) hired by several different kings

Key: B

8. Unlike the author of Passage 2, the author of Passage 1 does NOT mention
- (A) Arthur's followers
  - (B) Arthur's personal character traits
  - (C) the Arthur legend that persists today
  - (D) medieval storytellers
  - (E) a specific text in which Arthur is cited

Key: E

9. The word "patterns" in line \_\_ most nearly means
- (A) samples
  - (B) designs
  - (C) models
  - (D) traits
  - (E) imitations

Key: C

10. In Passage 1, "a king in the sense we understand kingship" most probably refers to
- (A) one member of a group of rulers sharing power in a certain region
  - (B) a warlord with a loyal band of followers
  - (C) the hero of a romantic folktale
  - (D) a military commander for hire
  - (E) the political ruler of a specific area

Key: E

Sentence Completion

Directions: For each question in this section, select the best answer from among the choices given and fill in the corresponding circle on the answer sheet.

1. Having inherited a staff known for ----- resources, the new chairman had no choice but to introduce a number of more efficient practices.
- (A) defining
  - (B) harboring
  - (C) neglecting
  - (D) bolstering
  - (E) squandering

Key: E



2. Critics of the novelist found his prose style as ----- as his ideas, and insisted that his work was ----- originality and substance.
- (A) fraudulent ... dependent on
  - (B) suspect ... filled with
  - (C) fulsome ... charged with
  - (D) commonplace ... devoid of
  - (E) exaggerated ... riddled with

Key: D

3. The young reporter was glad to be learning the basics at the local newspaper, but he was becoming bored with ----- news stories and was ----- to cover more exciting action.
- (A) lengthy...reluctant
  - (B) alluring...enthusiastic
  - (C) diverse...reticent
  - (D) numerous...fearful
  - (E) routine...eager

Key: E

4. Mrs. Sorice felt that Ed's ----- comments during class discussion helped the other students understand the complex ideas presented in the book.
- (A) predictive
  - (B) incisive
  - (C) derisive
  - (D) erratic
  - (E) sarcastic

Key: B

5. Once the audience began to applaud and laugh at her jokes, Vanessa felt more ----- and her delivery became less -----.
- (A) professional...engaging
  - (B) excited...interesting
  - (C) relaxed...inhibited
  - (D) uncomfortable...reserved
  - (E) anxious...wavering

Key: C

*Excerpts from SAT Test is being produced with permission from The College Board, USA  
(<http://www.collegeboard.org>). The College Board is a not-for-profit membership organization committed to excellence and equity in education.*