

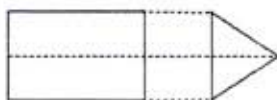
# RRB Secunderabad Sr. Section Engineers Exam

(Held on 21.12.2014)

- To use an AC motor in a DC circuit, which equipment would be required additionally?  
(A) Inductor (B) Capacitor (C) Rectifier (D)  Inverter
- Stomata are located in-  
(A) Red blood cells (B) Chlorophyll (C) Stomach (D)  Leaves
- A hardened steel file is used for removing metal or giving good finish to metals. Arrange the files in the increasing order of smoothness.  
(1) Rough file (2) Bastard file (3) Second cut file (4) Smooth file  
(A)  4, 3, 2, 1 (B) 1, 2, 3, 4 (C) 2, 1, 3, 4 (D) 4, 3, 1, 2
- Bile is secreted by-  
(A) Stomach (B) Liver (C) Large intestine (D) Gall bladder
- A shop reduced the price of an article by 25%. Its sale for that article increased by 25%. What is the net effect on sales in rupees?  
(A) No change (B) Increase by 5.75% (C) Decrease by 5.75% (D)  Decrease by 6.25%
- Out of the following, which is NOT a type of welding?  
(A) AC Arc (B) DC Arc  
(C)  MIG (D) All of these are different types of weldings
- "Ensure correct joint preparation, correct nozzle size and filler rod size and correct travel speed". We are talking about-  
(A) Gas welding (B) Arc welding (C) Thermit welding (D) Steam welding
- Perform the subtraction operation of binary digits 1001 - 10. The result is:  
(A) 1010 (B) 101 (C) 100 (D)  111
- Match the following -

1. Lysosomes	a. PowerHouse
2. DNA	b. Chromosomes
3. Mitochondria	c. Suicide bags

- (A) 1-a, 2-c, 3-b (B)  1-c, 2-b, 3-a (C) 1-b, 2-c, 3-a (D) 1-c, 2-a, 3-b
- In a car race course, the race starts in North East direction. The road starts curving in a circular path after 5 km. After  $\frac{3}{4}$ th of the circle the road is straight. In which direction would the cars be running on this straight road?  
(A) North west (B)  South west (C) South east (D)  Insufficient data
  - Air India's losses in previous financial year were to the tune of (in crores of rupees):  
(A) 4 (B) 40 (C) 400 (D) 4000
  - Based on the choice of the 'Q' point on the current voltage characteristics of the transistor, the amplifiers are classified as:  
(A) Class I, II, III and IV (B)  Class A, B, C and AB (C) Class A, B, C and D (D) Class IA, IB, IIA and IIB
  - Conservation of energy corresponds to which law of thermodynamics?  
(A) Zeroth law (B) First law (C)  Second law (D) Third law
  - Consider the following orthogonal projections of an object.



This object is a-

- (A)  Tetrahedron (B) Conical cylinder (C) Prism (D) Trapezium

15. Which of the following logic gates is a universal gate i.e. its combinations can be used to construct the logic of any other logic gate?  
 (A) OR (B) AND (C)  NAND (D) NOT
16. A man drives a car 20 km in the North east direction and further 20 km in the South east direction. In which direction will he have to drive to come back to his starting point?  
 (A) East (B)  West (C) North (D) South
17. Woolen clothes keep the body warm in winter because-  
 (A)  Wool is a bad conductor of heat (B) Wool is a good conductor of heat (C) Wool increases body temperature (D) Wool decreases body temperature
18. In potable water, the dissolved oxygen is stipulated as-  
 (A)  $<6\mu\text{g/l}$  (B)  $>6\mu\text{g/l}$  (C)  $<6\text{mg/l}$  (D)  $>6\text{mg/l}$
19. A, B & C invest ₹ 26000, ₹ 34000 and ₹ 10000 respectively in a business. They earn a Profit of ₹ 3500. B's share in the profit is:  
 (A) ₹ 1200 (B) ₹ 1500 (C)  ₹ 1700 (D) ₹ 1900
20. What is the purpose of turbo charging a diesel engine?  
 (A) Increase power of engine by burning more fuel (B) Increase the fuel injection and rpm  
 (C) Increase exhaust gas temperature to increase thermal efficiency (D) Increase inlet air so that engine fuel efficiency and power to weight ratio increases
21. Chemical bonding which results in formation of molecules from atoms is basically-  
 (A) Nuclear force (B) Short range forces (C) Electrostatic force (D) Gravitational force
22. Average Albedo (overall) of the Earth is:  
 (A)  $5 \times 10^6$  candela/day (B)  $5 \times 10^7$  candela/day (C) 30 to 35% (D) 60 to 65%
23. According to IPCC, three factors contributing to Global warming are :  
 1) CO<sub>2</sub> emissions  
 2) Change of land use deforestation  
 3) Non-veg food  
 Place them in the order of their contribution to global warming.  
 (A) 1, 2, 3 (B) 1, 3, 2 (C) 3, 1, 2 (D) 2, 1, 3
24. "Khalsa" was founded by-  
 (A) Guru Gobind Singh (B) Guru Ramdas (C) Guru Nanak (D) Guru Arjun Dev
25. "Common Base" configuration refers to the configuration of a-  
 (A) Rectifier (B)  Transistor (C) Diode (D) Inverter
26. The fidelity of a radio receiver relates to-  
 (A) Reproduction of a. f waves (B) Detection of carrier waves (C) Tuning of radio waves (D) None of these
27. What is the common property between LiAlH<sub>4</sub>, Sodium amalgam and NaBH<sub>4</sub>?  
 (A) They are used in removing slag from molten metals [www.previouspapers.in](http://www.previouspapers.in)  
 (B) They are used in manufacturing esters  
 (C) They are reducing agents (D) They are coated on welding electrodes
28. What is the common between Rockwell, Brinell and Shore? They pertain to-  
 (A) Surface finish (B) Heat treatment (C) Metal turning (D)  Hardness



29. Match the following:

1. Rectifier	a. Power electronics, Motor speed control, Battery charging, Phase control
2. Transistor	b. Rectifiers, Wave clipper circuits
3. SCR	c. Amplifiers, Switches

- (A) 1-a, 2-c, 3-b      (B) 1-b, 2-a, 3-c       (C) 1-b, 2-c, 3-a      (D) 1-c, 2-a, 3-b

30. Value of  $\pi$  (approx. value 3.14) is :

- (A) Terminating decimal       (B) Recurring decimal  
(C) Non-terminating non-repeating decimal      (D) Indeterminate

31. In a building, water is to be pumped to a height of 10m at the rate of 1 litre/second. Power requirement would be approx:

(Take 'g' 10 m/sec<sup>2</sup>)

- (A) 10 Watts      (B) 100 Watts      (C) 500 Watts      (D) 1 kW

32. Which of the following software is generally used for managing large number of activities of a civil engineering project?

- (A) MS Eng      (B) MS Project      (C) SQL Projects      (D) d Base Project

33. A galvanometer(G) measures upto 100 mA current. It is to be converted to a voltmeter to measure upto 100 volts. What is required to be done?

- (A) Add 100  $\Omega$  resistance in series with G       (B) Add 1000  $\Omega$  resistance in series with G  
(C) Add 1  $\Omega$  resistance in parallel with G      (D) Add 0.1  $\Omega$  resistance in parallel with G

34. Who authored the book "My Experiments with Truth"?

- (A) Abraham Lincoln      (B) Mark Twain      (C) Louis Carol       (D) M.K Gandhi

35. Raja Ravi Varma was famous for:

- (A) His struggle against the British      (B) Music & Singing       (C) Paintings      (D) Hindu reforms

36. Which of the following is NOT an NGO?

- (A) Amnesty International      (B) World Watch      (C) PUCL      (D) NHRC

37. In C.G.S system, the unit of strain is:

- (A) cm/kg      (B) m/kg       (C) no unit      (D) None of these

38. Which of the following information is NOT contained in engineering drawings?

- (A) Tolerances      (B) Material composition  
(C) Surface finish       (D) All of these are included in engineering drawing

39. El Nino effect is:

- (A) Development of low pressure areas in south east Asian region      (B) Reduction in ice caps resulting in variation in insolation absorption  
 (C) Prolonged warming in the Pacific Ocean surface area      (D) Sustained tornados in the eastern coast of North America

40. In a circuit in which resistance, capacitance and inductance are in series, the impedance would be-

- (A)  $\frac{V}{\sqrt{R^2 + (X_L - X_C)^2}}$        (B)  $\sqrt{R^2 + (X_L - X_C)^2}$       (C)  $i\sqrt{R^2 + (X_L - X_C)^2}$       (D)  $\frac{1}{\sqrt{R^2 + (X_L - X_C)^2}}$

41. No Go Ring Gauge will have diameter based on \_\_\_\_\_ diameter of the component.

- (A) Minimum tolerance diameter      (B) Maximum tolerance diameter      (C) Nominal diameter      (D) Average diameter

42. River Damoder is called the 'Sorrow of \_\_\_\_\_'.  
 (A) Assam (B) Bengal (C) Orissa (D) Uttar Pradesh
43. The linkage of atoms of the same elements into longer chains is called:  
 (A) Sublimation (B) Catenation (C) Affiliation (D) Linkage
44. When we switch on an electric bulb or a fan in our house, the appliance starts almost immediately. The drift velocity of electrons in the wires would be close to-  
 (A) 1 mm/sec (B) 1 m/sec (C)  $3 \times 10^8$  m/sec (D) None of these
45. Approximate quantity of CO<sub>2</sub> in the atmosphere in PPM (parts per million) is:  
 (A) 2 (B) 20 (C) 200 (D) 400
46. Which of these rocks would have alumina as their main component?  
 (A) Siliceous (B) Argillaceous (C) Calcareous (D) Igneous
47. Earthquakes cause damage when-  
 (A) Stress exceeds the strain of materials (B) Stress exceeds the strength of materials  
 (C) Strain exceeds the strength of materials (D) Strength exceeds the strain of materials
48. English Bond, Flemish Bond, Dutch Bond pertain to-  
 (A) Masonry work (B) Cement bonding (C) Bonding between beams (D) Bonding in foundation
49. A software user interface feature that allows the user to view something very similar to the end result while the document is being created is called-  
 (A) Format creator (B) Format fidelity (C) WYSIWYG (D) WYGIWYS
50. Government stipulates limit of concentration of sulphur dioxide in ambient air at 50 unit  
 The unit is:  
 (A) g/cc (B) mg/litre (C) mg/m<sup>3</sup> (D)  $\mu\text{g}/\text{m}^3$
51. Complete the series:  
 ab\_ab\_b\_aba\_aab  
 (A) bbab (B) abaa (C) aaaa (D) aaab
52. A man said to a lady "Rishi's mother is the only child of your father". How is the lady related to Rishi?  
 (A) Mother (B) Sister (C) Wife (D) Daughter
53. Loudness of noise is measured in-  
 (A) Richter (B) Tesla (C) Decibels (D) Hertz

54. Match the following -

1. Nickel	a. Radiator, Water cooling system
2. Brass	b. Bearings, Gears, Propellers
3. Bronze	c. Hard, Corrosion resistant and used in plating on steel

- (A) 1-b, 2-a, 3-c (B) 1-a, 2-b, 3-c (C) 1-c, 2-a, 3-b (D) 1-a, 2-c, 3-b
55. An interpretation of the Indian Constitution is based on the spirit of the-  
 (A) Fundamental rights (B) Fundamental duties (C) Preamble (D) Directive principles
56. A coin is tossed two times. On both occasions, the result is heads. When the coin is tossed a third time, what is the probability of getting a head?  
 (A) 1 (B)  $\frac{1}{2}$  (C)  $\frac{1}{4} \times \frac{1}{2}$  (D)  $\frac{3}{4} \times \frac{1}{2}$



57. Which of these is NOT an Operating System?  
 (A) Android (B) iOS (C) Linux (D) Power point

58. Consider the following truth table in Boolean Algebra.

X	Y	A	B	C	D
0	0	0	0	1	1
0	1	1	0	0	0
1	0	0	1	1	0
1	1	1	1	0	1

Which of the four options A, B, C, D represent the function

$$F = xy + xy'?$$

- (A) A (B) B (C) C (D) D

59. Sensitive low voltage electronic components are protected from-

- (A) Static charge (B) Induction circuit (C) Lightening (D) All of these

60. By what least number should 192,000 be divided so as to become a perfect cube?

- (A) 2 (B) 5 (C) 3 (D) 7

61. Two bulbs are rated 100W, 220 V each. If these bulbs are connected in series to the mains supply, 220 V, the total power consumed by both the bulbs would be-

- (A) 25 Watts (B) 50 Watts (C) 100 Watts (D) 200 Watts

62.  $\log_4 5 \times \log_5 6 \times \log_6 7$  is equal to:

- (A)  $\log\left(\frac{7}{4}\right)$  (B)  $\log_4 7$  (C)  $\log\left(\frac{4}{7}\right)$  (D)  $\log_7 4$

63. Which of the following Venn diagram represents the relationship between Human beings, Educated and Teachers?

- (A)  (B)  (C)  (D) 

64. A merchant is mixing two qualities of rice, one which he procures at ₹ 70/Kg and second at ₹ 40/Kg in the ratio of 7 : 3 respectively. At what price should he sell the mixture to earn a profit of 20%?

- (A) ₹ 73.20/Kg (B) ₹ 74/Kg (C) ₹ 74.6/Kg (D) ₹ 75.4/Kg

65. A tuning fork when sounded together with another tuning fork of known frequency of 240 Hz, emits 2 beats. On loading the tuning fork of known frequency the number of beats heard are one per second. The frequency of the tuning fork is:

- (A) 241 Hz (B) 242 Hz (C) 239 Hz (D) 238 Hz

66. What is the boiling point of water in Kelvin Scale?

- (A) 100 K (B) 273 K (C) 373 K (D) 300 K

67. Find the value of:

$$3 + 0.03 + 0.003 + 0.0003$$

- (A) 12 (B) 3.0333 (C) 3.3333 (D) 6.0333

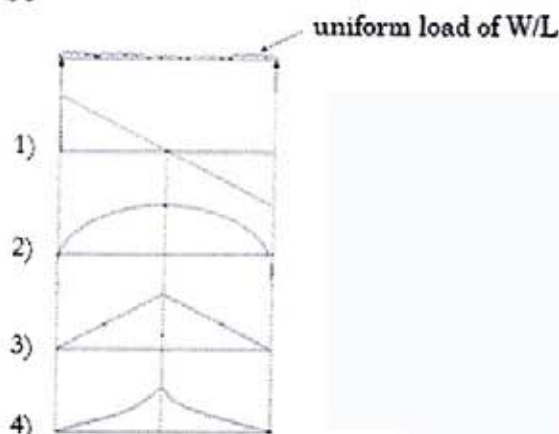
68. Which of the following tissues transports water and minerals from roots to other parts of the plant?

- (A) Phloem (B) Vessel (C) Sieve tube (D) Xylem

69. A clock is placed on the floor upside down at 9 O'clock. If the minute hand is pointing South East, the hour hand would be pointing-

- (A) North east (B) North west (C) South east (D) South west

70. A technique of anonymous communication over a computer network using encryption of messages and splitting between the nodes, is called-
- (A) Spice routing (B) Onion routing (C) Cabbage routing (D) Flower routing
71. In a transistor radio, a frequency tuner circuit that was conventionally used, would consist of-
- (A) An inductor and a variable capacitor in parallel (B) A bridge rectifier diode feeding the base of transistor through variable resistance
- (C) A multiple coil variac (D) A potentiometer with variable resistance
72. Toaster and electric iron, that are commonly used electrical appliances are mainly-
- (A) Inductive load (B) Capacitive load (C) Resistive load (D) None of these
73. In the case of a uniformly distributed load on a simply supported beam, the bending moment diagram would be-



- (A) 1 (B) 2 (C) 3 (D) 4

74. Plants get water through roots because of:

- (A) Viscosity (B) Elasticity (C) Gravity (D) Surface tension

75. In our house when we switch on heavy load appliances, we notice that there is slight dip in the glow of the bulb that was already switched on. This is due to-

- (A) Heavy current drawn by heavy load (B) Additional resistance added to the circuit
- (C) Resistance of electrical wiring (D) Resistance of part of the circuit decreasing from infinity to a positive value

76. Arrange the following fractions in ascending order.

$$\frac{7}{10}, \frac{3}{8}, \frac{4}{5}$$

- (A)  $\frac{3}{8}, \frac{7}{10}, \frac{4}{5}$  (B)  $\frac{3}{8}, \frac{4}{5}, \frac{7}{10}$  (C)  $\frac{4}{5}, \frac{3}{8}, \frac{7}{10}$  (D)  $\frac{7}{10}, \frac{3}{8}, \frac{4}{5}$

77. The illumination of a beam of light due to scattering on collision with particles suspended in a fluid, is called:

- (A) Raman effect (B) Tyndall effect (C) Snell's effect (D) Huygens effect

78. "Mahabharata" the epic was written by-

- (A) Vyasa (B) Kalidasa (C) Tulsidasa (D) Valmiki

79. Arya samaj was founded by-

- (A) Raja Ram Mohan Roy (B) Gopal Krishna Gokhale (C) Swami Dayanand Saraswati (D) Anne Besant

80. In a classical blood pressure measuring instrument in which doctor observes the rise and fall of mercury, the hand air pump is attached to a-

- (A) Isobar (B) Transducer (C) Manometer (D) Mercury column



81.  $2^{2^3} \div (2^2)^3$  is equal to:

- (A)  $2^2$  (B)  $2^1$  (C)  $2^{-2}$  (D)  $2^{-1}$

82. Which of these devices performs the function of both input device and output device for a computer?

- (A) Joy Stick (B) Mouse (C) Modem (D) Printer

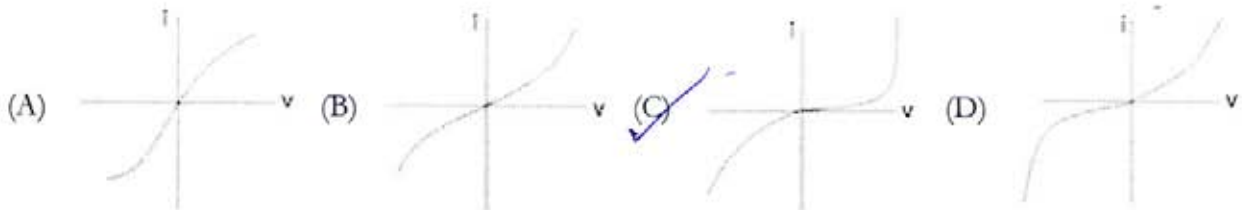
83. The sum of first  $n$  odd natural numbers is:

- (A)  $n^2 - 1$  (B)  $n^2$  (C)  $(n+1)^2$  (D)  $(n-1)^2$

84. If a cube is broken into 27 equal cubes, the total surface area is increased how many times?

- (A) 3 times (B) 6 times (C) 9 times (D) 27 times

85. Which of the Current (i) - Voltage (v) graphs represents a p-n junction diode characteristics?



86. Efficiency of Carnot cycle is:

- (A)  $1 - \frac{Q_1}{Q_1 + Q_2}$  (B)  $1 - \frac{T_1}{T_2}$  (C)  $1 - \frac{T_1}{T_1 + T_2}$  (D)  $1 - \frac{Q_1}{Q_2}$

87. Lufthansa Airlines is from which country?

- (A) USA (B) Malaysia (C) Germany (D) Russia

88. What is the ratio of angular speed of second's needle and hour's needle of a clock?

- (A) 1 : 60 (B) 60 : 1 (C) 3600 : 1 (D) 720 : 1

89. In a digital circuit a counter is basically a \_\_\_\_\_ which counts the number of clock pulses that have arrived at its clock input. Counters use \_\_\_\_\_ as their basic unit. Fill in the blanks respectively.

- (A) Register, Flip-flop (B) NAND gate, Register (C) Register, NAND gate (D) Flip-flop, Toggle

90. The terms Cope, Drag and Core are associated with-

- (A) Transformers (B) Castings (C) Laminar flow of liquid (D) Stellar evolution

91. French power declined in India after the battle of-

- (A) Plassey (B) Buxar (C) Talikota (D) Wandiwash

92. By which constitutional amendment did the Parliament acquire the right to amend Fundamental Rights?

- (A) 23<sup>rd</sup> (B) 24<sup>th</sup> (C) 25<sup>th</sup> (D) 26<sup>th</sup>

93. A rectangular garden has an area of 48 sq.m and perimeter of 28 m. What is the length of its diagonal?

- (A) 8 m (B) 10 m (C) 12.5 m (D) 14.14 m (approx.)

94. Cash-reserve ratio of a commercial bank is fixed by-

- (A) Ministry of Finance (B) Ministry of Commerce (C) RBI (D) Management of the commercial bank

95. If  $12a + 6b = 54$ , what is the average of a & b?

- (A) 2.25 (B) 4.5 (C) Data insufficient

96. A, B and C can do a piece of work in 12, 15 and 20 days respectively. How long will they take to finish the work together?  
 (A) 10 days (B) 5 days (C) 8 days (D) 12 days
97. What is morphology?  
 (A) Study of insects (B) Study of Human evolution  
 (C) Study of forms and structural features of organisms (D) Study of interdependence of organisms and environment
98. Assume that a 1 ton air conditioner is required to cool a room of size 14' x 14' x 14'. How many 1 ton ACs would be required for a hall of size of 24' x 24' of the same roof height as that of the previous room?  
 (A) 2 (B) 3 (C) 4 (D) 5
99. In the context of action of medicines on human body, match the following:

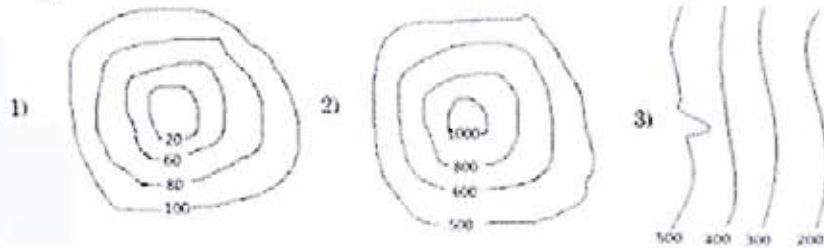
1. Receptors	a. Catalysts
2. Enzymes	b. Neurologically active
3. Tranquilizers	c. Proteins

- (A) 1-c, 2-a, 3-b (B) 1-a, 2-c, 3-b (C) 1-b, 2-a, 3-c (D) 1-a, 2-b, 3-c
100. Several nations are following a protocol which binds them to reduce emission targets. This protocol was adopted in:  
 (A) Kyoto, Japan (B) Geneva, Switzerland (C) New York, USA (D) Paris, France
101. An electrical appliance has a yoke, stator winding, rotor, commutator, carbon brush. The appliance could be a-  
 (A) DC motor (B) AC induction motor (C) AC generator (D) Both (B) and (C)
102. How many Fundamental Rights are guaranteed by the Constitution of India?  
 (A) 7 (B) 3 (C) 5 (D) 6
103. Which of the following statement is correct?  
 (A)  $n$  linear equations with  $n$  variables may have a unique solution  
 (B)  $n$  linear equations with  $n$  variables may have no solution  
 (C) Both A & B are correct (D) Both A & B are wrong
104. If  $a : b = 4 : 3$  and  $b : c = 7 : 9$ , then  $a : b : c = ?$   
 (A) 24 : 21 : 30 (B) 12 : 15 : 21 (C) 8 : 6 : 12 (D) 28 : 21 : 27
105. Once 'X' is turned ON, even after removing the gate voltage, 'X' remains ON. 'X' is a:  
 (A) Transistor (B) FET (C) Thyristor (D) MOSFET
106. The chemical reaction between cement and water is:  
 (A) Hydration (B) Chlorination (C) Calcination (D) None of these
107. Statement A:  
 In coordinate geometry, distance between two points is given by :  

$$S = \sqrt{(x_1 - x_2)^2 + (y_1 - y_2)^2}$$
  
 Statement B: Pythagoras theorem  
 Which of the following statements is correct?  
 (A) Statement A is proved by Statement B (B) Statement B is proved by Statement A  
 (C) Both the statements are independent (D) None of these
108. The first Indian railway train journey between Bombay and Thane was in the year-  
 (A) 1857 (B) 1853 (C) 1818 (D) 1854



109. The process of 'Upsetting' pertains to-  
 (A) Casting (B) Forging (C) Turning (D) Milling
110. What is the function of push rod in a diesel engine? It transfers force between -  
 (A) Cam and rocker arm (B) Connecting rod and piston (C) Crankshaft and piston (D) None of these
111. Consider following contours:



Match the following a) Hill b) Pond c) Slope

- (A) 1-b, 2-a, 3-c (B) 1-a, 2-b, 3-c (C) 1-a, 2-c, 3-b (D) 1-c, 2-b, 3-a
112.  $\sin^{-1}(1/2) + \tan^{-1}(1) = ?$   
 (A)  $30^\circ$  (B)  $45^\circ$  (C)  $75^\circ$  (D)  $90^\circ$

113. Which of the following statements is true?  
 (A) Value of  $\sin\theta$  increases with increase in  $\theta$   
 (B) Value of  $\cos\theta$  decreases with increase in  $\theta$   
 (C) Between  $0^\circ$  &  $90^\circ$ , value of  $\cot\theta$  increases with increase in  $\theta$   
 (D) Between  $0^\circ$  &  $90^\circ$ , value of  $\tan\theta$  decreases with decrease in  $\theta$

114. In an orthogonal projection the axis of a cylinder or a cone is denoted by-  
 (A) A thin line (B) A medium dashed line (C) A sequence of long and short dashes (D) Dashes of uniform lengths

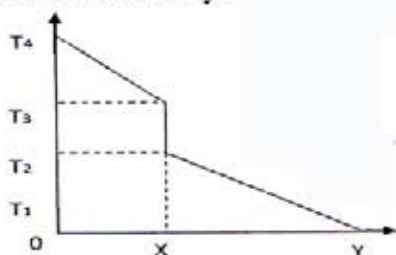
115. Glycerol can be represented by chemical formula:  
 (A)  $C_2H_5O_2$  (B)  $C_3H_7OH$  (C)  $C_3H_5OH$  (D)  $C_3H_8O_3$

116. Which of the following phenomenon is related to the formation of clouds?  
 (A) Condensation (B) Evaporation (C) Sublimation (D) Vulcanization

117. Who wrote/invented the Linux software?  
 (A) Microsoft (B) Apple Inc (C) IBM (D) None of these

118. The average score of girls in a class is 75 marks. The average scores of boys in the class is 65 marks. If the average of the class is 68.75 marks, what is the ratio of boys to girls in the class?  
 (A) 2 : 5 (B) 5 : 2 (C) 3 : 5 (D) 5 : 3

119. Consider that two solid bodies A and B are touching each other and transmitting heat through conduction. In the graph below, OX represents the first body and XY represents the second body.

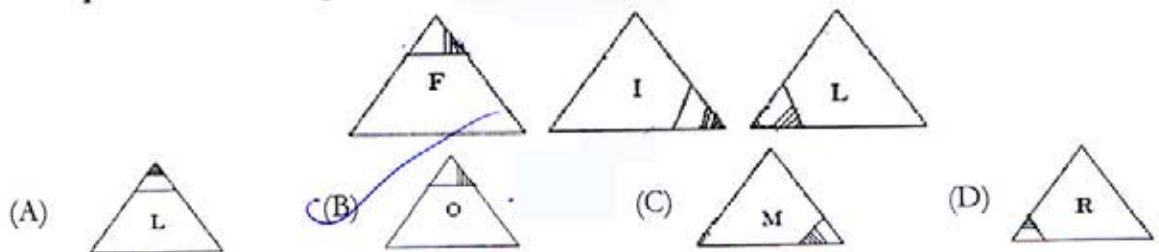


State True (T) or False(F).

- 1) Temperature gradient is more in A than in B  
 2) The heat flow is determined by Fourier's law  
 3) Area under the curve represents heat dissipation rate.

- (A) T, T, T (B) T, T, F (C) T, F, T (D) F, F, T

120. Radiation of a black body, in terms of its temperature follows:  
 (A) Newton's law of cooling (B) Plank's law (C) Stefan's law (D) Einstein Bose equation
121. What are capacitor banks in the context of electricity supply to a city?  
 (A) They add capacitance to the supply so that electricity is stored in case of breakdown (B) These banks are storage spaces so that capacitors are available to maintenance engineers in case of failures  
 (C) They balance the inductive component of transformer coils to smoothen the supply (D) They balance the inductive loads to improve the power factor
122. In S.I system, unit of stress is:  
 (A)  $\text{kg/cm}^2$  (B)  $\text{N}$  (C)  $\text{N/m}^2$  (D) Watt
123. Which planet has hot turbulent atmosphere dominated by carbon-di-oxide?  
 (A) Venus (B) Mars (C) Jupiter (D) Neptune
124. A man drives a car and reaches his destination in 4 hours. Had he increased his speed by 10 km/hr, he would have reached in 3 hours, 12 minutes. What distance did the man cover?  
 (A) 80 km (B) 120 km (C) 160 km (D) 210 km
125. In September 2014, which state was affected by flood?  
 (A) Karnataka (B) Madhya Pradesh (C) Gujarat (D) Jammu & Kashmir
126. A person puts 1 grain of rice in the first square of a chess board. In the subsequent squares he puts twice that of the previous square. How many grains would he need to put on all the squares of the chess board?  
 (A) 64! (B)  $2^{64}-1$  (C)  $2^{63}-1$  (D)  $p(64, 2)$
127. Orthogonal projection of an object shows a rectangle of dimensions 5 cm x 10 cm on the X - Y plane and a circle of diameter 10 cm on the Y-Z plane. What is the volume of the object?  
 (A) 5000  $\text{cm}^3$  (B)  $\pi \cdot 5^3$  (C)  $\frac{\pi \cdot 10^3}{4}$  (D) 2500  $\text{cm}^3$
128. Strength of commonly used concrete, for constructing low rise residential buildings is:  
 (A) 300 psi (B) 8000 psi (C) 15000 psi (D) 25000 psi
129. Processing speed of computer is measured in-  
 (A) MIPS (Million Instruction Per Second) (B) MHz of clock  
 (C) Both (A) and (B) (D) None of these
130. The famous queen Chand Bibi who fought against Akbar, defended the city of -  
 (A) Berar (B) Ahmadnagar (C) Golconda (D) Mysore
131. Complete the series logically.



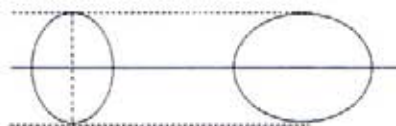
132. The heart of the 'Microwave oven' that produces the microwave range of radiation is called-  
 (A) Cyclotron (B) Oscillotron (C) Variable frequency oscillator (D) Magnetron



133. Intensity of earthquake is measured in -

- (A) Barometer scale (B) Pyrometer scale (C) Tachometer scale (D) Richter scale

134. Consider the following orthogonal projections of an object is and answer what could this object be:



- (A) Circle (B) Sphere (C) Ellipse (D) Spheroid

135. Find the next number in the series.

33, 34, 32, 35, 31, 36, \_\_\_\_\_

- (A) 30 (B) 37 (C) 38 (D) 29

136. Soaps are manufactured by:

- (A) Reaction of alkalies with glycerol (B) Reaction of fats with soluble hydroxides  
(C) Reaction of calcium and magnesium ions with dilute sulphuric acid (D) Reaction of dodecyl benzene with  $H_2SO_4$  and then NaOH

137. A map mentions the scale 1 cm = 1 km.

The scale is in the ratio:

- (A) 1 : 10<sup>3</sup> (B) 1 : 10<sup>4</sup> (C) 1 : 10<sup>5</sup> (D) 1 : 10<sup>6</sup>

138. Acid rain is caused by:

- (A) CO & CO<sub>2</sub> (B) SO<sub>2</sub> & O<sub>2</sub> (C) SO<sub>2</sub> & NO<sub>2</sub> (D) NO<sub>2</sub> & O<sub>2</sub>

139. Find the next number in the series.

1, 2, 6, 24, 120, \_\_\_\_\_

- (A) 240 (B) 480 (C) 560 (D) 720

140. India's first war of Independence (related to Meerut mutiny) was in:

- (A) 1835 (B) 1857 (C) 1892 (D) 1905

141. Which of the following is NOT used for measurement of temperature?

- (A) Thermocouples (B) Thermistors (C) Pyrometers (D) All are used

142. The transformer equation  $V_1 I_1 = V_2 I_2$  is the manifestation of-

- (A) Ampere's law (B) Coloumb's law (C) Law of energy conservation (D) Biot Savart's law

143. Match the following :

1. Magnetic flux density	a. Tesla
2. Self inductance	b. Weber
3. Magnetic flux	c. Henry

- (A) 1-b, 2-c, 3-a (B) 1-c, 2-a, 3-b (C) 1-a, 2-b, 3-c (D) 1-a, 2-c, 3-b

144. Currently which 5 year plan is under execution in India?

- (A) 12<sup>th</sup> (B) 13<sup>th</sup> (C) 14<sup>th</sup> (D) 15<sup>th</sup>

145. In a certain code, "All The Best" is written as 534; "Best of Luck" is written as 675; "The Good Luck" is written as 478. In this code "Good" would be written as:

- (A) 8 (B) 7 (C) 6 (D) 5

146. Tachymeter (or Tacheometer) is an instrument for measuring-
- (A) rpm (B) Torque (C) Rotational kinetic energy (D) Distances
147. If 'h' is the depth of water held by a dam and 'A' is the cross section area of the water and 't' is the thickness of wall of the dam, then the maximum pressure on the wall of the dam will depend upon:
- (A) A, h & t (B) A & h (C) h & t (D) h
148. Angle between two sides of a regular polygon having  $n$  vertices is:
- (A)  $\frac{360}{n}$  (B)  $90 + \frac{180}{n}$  (C)  $\frac{180}{n}$  (D)  $180 - \frac{360}{n}$
149. In a computer system, there are softwares and languages at various levels, like High level Language (HL), Machine Language (ML), Compiler (C). Which of the following is the correct indicative representation from user (U) to the computer (COMP)?
- (A)  $U \rightarrow HL \rightleftharpoons C \rightleftharpoons ML \rightleftharpoons Comp$  (B)  $U \rightleftharpoons C \rightleftharpoons ML \rightleftharpoons HL \rightleftharpoons Comp$
- (C)  $U \rightleftharpoons C \rightleftharpoons HL \rightleftharpoons ML \rightleftharpoons Comp$  (D)  $U \rightleftharpoons ML \rightleftharpoons HL \rightleftharpoons C \rightleftharpoons Comp$
150. An eating disorder of excessive weight loss usually due to undue concern about body shape is known as:
- (A) Anorexia nervosa (B) Appetitis (C) Autotrophic disorder (D) Autotrophic syndrome



## **RRB SSE GREEN (TSD001214)KEY**

1. D	2. D	3. A	4. D	5. D	6. D	7. B	8. D	9. B	10. D
11. D	12. B	13. B	14. C	15. C	16. B	17. A	18. C	19. C	20. C
21. C	22. C	23. D	24. A	25. B	26. C	27. B	28. D	29. C	30. B
31. B	32. B	33. B	34. D	35. C	36. B	37. C	38. D	39. C	40. B
41. A	42. B	43. B	44. C	45. D	46. B	47. C	48. D	49. C	50. D
51. B	52. A	53. C	54. C	55. C	56. C	57. D	58. C	59. D	60. C
61. D	62. B	63. C	64. A	65. B	66. C	67. B	68. D	69. A	70. B
71. A	72. C	73. B	74. A	75. A	76. A	77. B	78. A	79. C	80. D
81. A	82. D	83. B	84. A	85. C	86. B	87. C	88. D	89. A	90. B
91. A	92. C	93. B	94. C	95. D	96. B	97. C	98. B	99. B	100. A
101. D	102. D	103. C	104. D	105. C	106. A	107. A	108. B	109. B	110. A
111. A	112. C	113. D	114. D	115. C	116. A	117. A	118. D	119. A	120. B
121. D	122. C	123. C	124. C	125. D	126. B	127. B	128. C	129. C	130. B
131. B	132. D	133. D	134. D	135. A	136. A	137. C	138. C	139. D	140. B
141. D	142. C	143. D	144. A	145. A	146. A	147. B	148. D	149. A	150. A