



**SMU** SIKKIM  
MANIPAL  
UNIVERSITY

# PROSPECTUS 2018



# Courses At a glance

Course	Minimum Qualification	Admission Procedure
<b>Technical Campus</b>		
B Tech (ECE, CSE, EEE, IT, ME, CE)	10+2/equivalent with 50% marks in PCM	Entrance Test: JEE / MAHE-OET or SMIT Offline Test
Lateral B Tech (ECE, CSE, EEE, IT, ME and CE)	Diploma in appropriate branch OR B Sc with Mathematics, with 60% marks	Merit, based on marks in the qualifying examination and Entrance Test conducted by SMIT
BBA/BCA/B Sc IT	10+2/equivalent in any stream with 50% marks	Merit, based on marks in the qualifying examination
MCA/M Sc IT	Bachelor in any discipline with Maths/ Statistics in 10+2 with 50% marks	Entrance Test conducted by SMIT
MBA (Finance, Marketing, Systems & HR)	Bachelor in any discipline with 50% marks	MAT&CAT score / University Entrance Test and GDs/PIs
M Tech (CSE, DE & CE, IT, PE, Production Engg. and Structural Engg.)	BE/B Tech in related branches of Engineering with 55% marks	GATE/MAHE-OET/Entrance Test by SMU at SMIT
<b>Medical Campus</b>		
MBBS	10+2/equivalent with 50% marks in PCB (40% for SC/ST/OBC)	NEET
MD/MS	MBBS with internship completion by 31st March 2018	NEET
Integrated M Sc Medical Biotech	10+2/equivalent with 50% marks in PCB	Merit, based on marks in the qualifying examination
B Sc (Nursing)	10+2/equivalent with 45% marks in PCBE	Merit, based on marks in the qualifying examination
BPT	10+2/equivalent with 50% marks in PCB	Merit, based on marks in the qualifying examination
M Sc Nursing	B Sc Nursing, / Post Basic BSc. Nursing with 55% marks (5% relaxation for SC/ST/OBC)	Merit, based on marks in the qualifying examination
Masters in Hospital Adm	Bachelor in any discipline with 50% marks	
MPT	BPT with 50% aggregate marks	Merit, based on marks in the qualifying examination
<b>University Campus</b>		
B Com/B A	10 +2 in relevant stream	Merit, based on marks in the qualifying examination
M Com	B Com	
M Sc (Phy, Chem and Maths)	B Sc (Gen/Hons) in relevant subject	Merit, based on marks in the qualifying examination
Ph D	PG Degree in relevant discipline	University Entrance Test/NET

### Sikkim Manipal Institute of Technology (SMIT)

#### **B.Tech**

Last date of application - SMIT Offline Test	21 April
SMIT Offline Test	29 April
Publication of Result (www.smu.edu.in)	7 May
Counseling/Admission under various categories	
JEE - Reserved (Sikkim, Defense, GTA, NE, PMF)	24 May
JEE - General	25 May
SMIT Offline	28 May
2 <sup>nd</sup> round of counseling - JEE / SMIT Offline	2 June
Date of reporting at campus	12 July

#### **B.Tech – Lateral Entry**

Last date of application	30 June
Entrance Test	5 July
Counseling & Admission	6 July
Date of reporting at campus	27 July

#### **BBA/MBA**

Last date of application	21 July
BBA - Counseling & Admission	I Round 18-21 June II Round 18-21 July
MBA - GD, PI, Counseling & Admission - MAT/CAT	I Round 25 June II Round 17 July
MBA - Entrance exam, GD, PI, Counseling & Admission - Others	I Round 26 June II Round 18 July
Date of reporting at campus	4 August

#### **BCA/MCA/M.Tech/BSc IT/MSc IT**

Last date of application	21 July
BCA / BSc IT - Counseling & Admission	I Round 25 - 28 June II Round 25 - 28 July
MCA / MCA (LE) / MSc IT - Entrance test, Counseling & Admission	I Round 25 June II Round 17 July
M.Tech - Entrance Test	26 July
M.Tech - Counseling & Admission	27 July
Date of reporting at campus	4 August

#### **MSc (Phy/Chem/Maths)**

Last date of application	14 July
Counseling & Admission	23 July
Date of reporting at campus	4 August

## Important Dates 2018

### Sikkim Manipal Institute of Medical Science (SMIMS)

#### MBBS

Admission test and counseling	Dates as per MCI notification
Commencement of classes	August 01
Last date for admission against vacant seats arising due to any reason	August 31

#### MD/MS

Admission test	Dates as per MCI notification
Submission of application form	December 22 to March 10
Last date for admission against vacant seats arising due to any reason	May 31
Commencement of classes	May 01

#### Integrated M Sc Medical Biotechnology

Admission Process	Direct Admission
Admission Period	June 1 to July 31
Commencement of classes	August 1 <sup>st</sup> week

#### Master in Hospital Administration, BA, B Com, M Com

Last date for receipt of duly filled application forms	July 15
Counseling / admission	June 1 to July 15
Commencement of classes	August 1

#### Bachelor of Physiotherapy (BPT}

Mode of admission	Open for direct admission
Commencement of Classes	August 01

#### Master in Physiotherapy (MPT)

Last date of receipt of application	June 22
Counseling / Admission	July 02
Commencement of Classes	August 06

#### BSc Nursing

Last date for receipt of duly filled application forms	Open for direct admission
Commencement of classes	August 1

#### MSc Nursing

Last date of receipt of application forms	July 31
Counseling/admission	August 13 & 14
Commencement of classes	September 1

# Sikkim Manipal University

## Vision

“Global Leadership in Human Development,  
Excellence in Education and Healthcare”

## Mission

“To be a Preferred Choice of Students,  
Faculty and Industry in Every Discipline  
Undertaken by the University”



# Contents

Important Dates	i-ii	<b>Section 5</b>	
SMU Vision Mission	iii	University Departments	71
Contents	iv	Department of Humanities & Social Sciences	72-74
Message From The Chancellor	1	Department of Hospital Administration	75-76
Message From The Pro Chancellor	2	Department of Medical Biotechnology	77
Message From The Vice Chancellor	3	<b>Section 6</b>	
Sikkim Manipal University	4	Seat Matrix of Courses Under SMU	78-81
<b>Section 1</b>		<b>Section 7</b>	
Sikkim Manipal Institute of Technology	5	Course & Hostel Fees	82-84
Message From The Director	6	Withdrawal & Refunds	85
SMIT at a Glance/Advantage—SMIT	7	<b>Section 8</b>	
SMIT a Glimpse	8	General Information	86
List of courses offered in SMIT	9	Instruction For Filling Application Form	87-89
Academic Departments	10-26	Guidelines For Candidates Appearing In SMIT Offline Test (For B Tech)	90
Programs And Eligibility Criteria	27-30	Annexure I	91
Infrastructure/ Facilities	31-32		
Student Support	33		
Student Activities	33-34		
Institute Scholarship	34-35		
Achievements/International Collaboration/ Recent Developments	36		
Training & Placement	37		
Industry Orientation/ Projects and Placements	37		
Placement Statistic	38		
Recruiters & Internship	39		
Special Coaching and Grooming	40		
MUTBI	41		
Our Entrepreneurs	42		
<b>Section 2</b>			
Sikkim Manipal Institute of Medical Sciences	43-44		
Message From The Dean	45		
Courses and Objectives	46-47		
Eligibility Criteria	47-48		
Categories	48-49		
Counseling Procedure	50-52		
Facilities Available	53-55		
<b>Section 3</b>			
Sikkim Manipal College of Nursing	56-57		
Key Features of SMCON	58		
Number of Seats	58		
B.Sc. Nursing	58-59		
M.Sc. Nursing	60-62		
Important Dates	63		
Admission Procedure	63		
<b>Section 4</b>			
Sikkim Manipal College of Physiotherapy	66		
Courses Offered and Objectives	67		
Eligibility Criteria	68		
Categories	69		
Admission Procedure	69		
Documents Required	69-70		

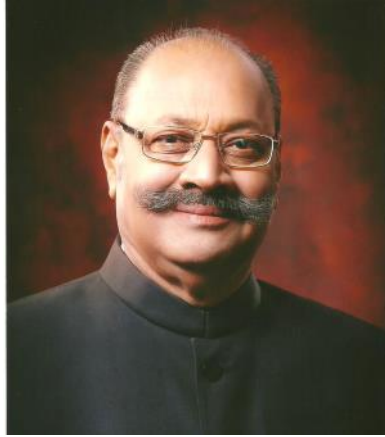
# Message from The Chancellor

श्रीनिवास पाटील  
SHRINIWAS PATIL



राज भवन  
गान्तोक-737103  
(सिक्किम)  
RAJ BHAVAN  
GANGTOK-737103  
(SIKKIM)

SKM/GOV/MESG/2017/6020  
15<sup>th</sup> November, 2017



It is my pleasure to be associated with Sikkim Manipal University as its Chancellor. Sikkim Manipal University has been serving the nation with its goal of quality education and healthcare services over the last two decades.

Located in one of the most peaceful and vibrant tiny Himalayan State of Sikkim, the University has enriched many lives and shaped the minds of young ones to emerge as dedicated professionals and entrepreneurs in their own spheres of life.

I wish the students the best of their learning and growth to emerge as true nation building citizens of the country.

*S. Patil*  
.. 15-11-17  
(Shriniwas Patil)

# Message from The Pro Chancellor



Dear Students,

Sikkim Manipal University (SMU) is part of the Manipal Education and Medical Group that operates 6 Universities in India and overseas. Among these, SMU has been at the forefront of providing medical and engineering education in the Eastern and North-Eastern regions of our country, since the late 1990s.

Sikkim Manipal Institute of Technology (SMIT) is a constituent college of SMU, set up in 1997 and, over the years, has established itself as a premier engineering institute. Similarly, Sikkim Manipal Institute of Medical Sciences (SMIMS), a constituent college of SMU, set up in 1999, is amongst the leading medical schools in these regions.

Today, SMU is a multi-disciplinary university with a strong faculty base and superior infrastructure. It has, since long, been very ably meeting the academic aspirations of students.

We look forward to welcoming you to our campus and are confident that SMU will be your stepping stone to a successful future.

A handwritten signature in blue ink, appearing to read 'Rajen Padukone'. The signature is fluid and cursive, with a long horizontal stroke at the end.

**Rajen Padukone**



## Message from The Vice Chancellor



Dear Candidates,

Sikkim Manipal University is part of the Manipal Group of Universities and is well known for imparting quality education.

Our perseverance and endeavor are guided by our vision to transform the lives of our students, through exemplary education and training, in their journey of discovery, understanding, awareness and perfection of cutting edge knowledge, skills and competencies.

Our Institutes have state of the art infrastructure, facilities, ambience and organizational culture to nurture your thinking and understanding in your pursuits to perfect your professional knowledge and competence.

Our dedicated teams of faculty are committed to the task of ensuring that our students are well trained to meet the demanding challenges of their chosen profession in the competitive world.

We look forward to welcoming you to Sikkim Manipal University.

A handwritten signature in blue ink, which appears to read 'M D Venkatesh'.

**Lt. Gen. (Dr) M D Venkatesh**

# Sikkim Manipal University (SMU)

Established on November 15, 1992 by an act of Sikkim Legislative Assembly through Act No.9/1995.

1<sup>st</sup> PPP model in India between the Government of Sikkim and the Manipal Pai Foundation.

Recognized by the University Grants Commission (UGC).

Member of the Association of Indian Universities (AIU).



**Sikkim Manipal Institute of Technology**

**Sikkim Manipal Institute of Medical Sciences**

**Sikkim Manipal College of Nursing**

**Sikkim Manipal College of Physiotherapy**



# **Sikkim Manipal Institute of Technology (SMIT)**

## **Vision**

To achieve eminence in the field of quality technological education and research.

## **Mission**

To develop SMIT into an institute of excellence capable of producing competent techno-managers who can contribute effectively to the advancement of the society.

## **Objectives**

To provide wholesome education to meet the intellectual aspirations of students.

To equip students with techno-managerial skills to enable them to take their assigned role in the industry.

To inculcate essential ethics and values to meet the spiritual needs of the students.

To provide a sound institutional environment nurturing emotional strength, a healthy mind, body and resilience amongst the students.

## Message from The Director



At Sikkim Manipal Institute of Technology, it is our endeavor to achieve eminence in the field of quality technological education and research. Our dedicated team of faculty is committed to provide wholesome education to meet the intellectual aspirations of students and equip them with techno-managerial skills that will enable them to take their assigned role in the industry as thorough professionals.

We also aspire to inculcate all qualities which are essential to make our students contribute effectively to the advancement of the society.

The institute has state-of-the-art infrastructure and an environment conducive to meet academic, extra curricular and co-curricular aspirations of the students to enable them to be industry ready once they graduate from the institute.

We look forward for you to select Sikkim Manipal Institute of Technology (SMIT) as your destination for higher studies. We are sure that your stay with us will enable you to become a thorough professional in the technical field chosen by you.

With Best Wishes,

Prof (Dr.) A Garg

## 1.1 SMIT at a glance

SMIT was established in 1997 and the courses are approved by AICTE/UGC. The first technological campus of Sikkim offers high quality technological education and promotes holistic growth of the students. Fully residential campus and endowed with natural beauty makes it an ideal place for students to emerge as the potential nation builders.

SMIT offers undergraduate, postgraduate and PhD in various disciplines of engineering, science and management.

## 1.2 Advantage - SMIT

- Proven and consistent incremental quality since 1997.
- Well qualified faculty members with strong emphasis on creativity and research.
- State-of-the-art infrastructure.
- Excellent placements coupled with dynamic institute-industry interaction.
- Vibrant Entrepreneurship and Incubation Cell promoting establishment of startup/ companies.
- Student centric unique Teacher – Guardian Scheme for effective mentoring.
- Excellent discipline supported by unique Floor Warden scheme.
- Extracurricular activities facilitated by modern amenities for wholesome development of the students.
- Scholarship and benevolent fund to the deserving/needful students.
- Pollution free and peaceful atmosphere – excellent ambience for teaching learning.



**1**

**Ranked 1st in the state sikkim**

Source: CSR-GHRDC Engineering Colleges Survey, 2017



**3**

**Ranked 3rd amongst Top Emerging Engineering Colleges of Eminence**

Source: CSR-GHRDC Engineering Colleges Survey, 2017



**17**

**Ranked 17th overall Top Engineering Colleges**

Source: CSR-GHRDC Engineering Colleges Survey, 2017



## 1.4 List of courses offered in SMIT

### *Undergraduate courses*

1. ***B. Tech in Civil Engineering (CE)***
2. ***B. Tech in Computer Science & Engineering (CSE)***
3. ***B. Tech in Electrical & Electronics Engineering (EEE)***
4. ***B. Tech in Electronics & Communications Engineering (ECE)***
5. ***B. Tech in Information Technology (IT)***
6. ***B. Tech in Mechanical Engineering (ME)***
7. ***Bachelor of Business Administration (BBA)***
8. ***Bachelor of Computer Applications (BCA)***
9. ***B. Sc IT***

### *Postgraduate courses*

1. ***M. Tech in Computer Science & Engineering***
2. ***M. Tech in Digital Electronics & Communications Engineering***
3. ***M. Tech in Information Technology***
4. ***M. Tech in Power Electronics***
5. ***M. Tech in Production Engineering***
6. ***M. Tech in Structural Engineering***
7. ***Master of Business Administration (MBA)***
8. ***Master of Computer Applications (MCA)***
9. ***MSc (Chemistry)***
10. ***MSc (Physics)***
11. ***MSc (Mathematics)***
12. ***M. Sc IT***

***Ph.D. in all the disciplines.***



## 1.5 Academic Departments

### 1.5.1 Civil Engineering

The department was established in 2009 and offers B. Tech; M. Tech and Ph. D. programme.

#### Strength of the Department

*Highly qualified faculty members from reputed institutes (IITs & NITs)*

*Well-equipped state-of-the-art laboratories*

*Up-to-date and well-focused course curriculum*

*Industrial interactions and collaborations*

*Well established alumni in private and public sectors*

#### Research and Development

Active research in frontier areas of Civil Engineering such as water resources, water scarcity and drought, climate-change impacts on water resources, earthquake-resistant structural design etc.

Sponsored research projects from Govt. of India and Govt. of Sikkim

Consultancy projects from Govt. of Sikkim and industries

Publications in reputed international journals

#### Laboratories

Material Testing, Advanced *Fluid Mechanics*, Geology, *Soil-Geotechnical*, Survey, *Environmental Engineering*, *Computational*





## Student Activity

Organisation of annual departmental techno-cultural fest – **CELESTUS** and other student related activities

## Workshop

Workshops are organized regularly, aiming practical training on various aspects of Civil Engineering such as *Bridge Design, Seismic & Toll Building Design.....*

## Achievements (Faculty/Department)

Resource persons in various committees of Government organizations & academic institutions

*Impart training to Govt. engineers of Sikkim on RVS and Earthquake resistant features of buildings*

As experts in faculty selection committees of various institutions

*Reviewer of prestigious international journals published by Springer, Elsevier.....*

The department has been chosen as State Technical Agency by National Rural Road Development Authority, Govt. of India

## Students and Alumni

Pursuing higher studies abroad

Placement in reputed companies in India and abroad

As faculty members in foreign universities



## 1.5.2 Computer Science & Engineering

The department was established in 1997 and offers B. Tech, M. Tech and Ph. D. programme.

### Strength of the Department

A team of well qualified and dynamic faculty members

State of the art laboratories - Networks Lab, Robotics Lab, Remote Sensing & GIS Lab (All AICTE Funded) and Centre for Geo Informatics (ISRO Funded)

*Academic/ research associations with IIT Kharagpur, IIT Delhi, IIT Guwahati, IIT Bombay, Tata Institute Fundamental Research, Indian Statistical Institute Kolkata, NIT Rourkela, ISRO (Center of Excellence), Dell India and TCS*

Industrial interaction - Major project, minor project, internship, industrial collaboration....

*A strong Alumni network*

### Research and Development

A good number of research projects funded by AICTE and NNRMS/ ISRO (Bangalore).

*Active research area ; Big Data, Cloud Computing, and Data Analytics, Networks-Wired/Wireless, Sensor, Remote Sensing & GIS, Robotics & Intelligence System, Soft Computing, Digital Image Processing, Natural Language Processing, Cryptography & Network Security*

Regular publication in journal and conferences



## Laboratories

Advanced Computing, *Post Graduate & Research I & II*, *Basic Computing*, Digital Circuit & Logic Design, *Network*, *Robotics*, Remote Sensing & GIS, *Multi-Computing*

## Student Activity

### Cultural/Tech fest

**ACCESS** (All Core Computer Engineering Students Society) organizes Annual Intra College Techno - Cultural Fest **VAASTUSASMITAM**

### Societal responsibility

Handling social responsibilities through “*Swachh Mission*”, “*Mission Education*” and Blood Donation Camps

## Conferences/Workshop (AY 2016 – 2017)

International Conference on “*Advanced Computational and Communication Paradigms (ICACCP-2017)*”, 8 - 10 September, 2017

## Students Achievements

Students performed well in **CAT/MAT, GATE, GRE, TOEFEL and IELTS**, and pursuing higher studies in reputed institutes of India and abroad

Tabish Imran and Madhup Sukoon are in the process of registering a company under **START UP INDIA**, supported by **MUTBI, SMIT** Satellite Centre



## 1.5.3 Electrical & Electronics Engineering

The department was established in 1997 and offers the following programs:

B.Tech, M.Tech and Ph.D. programme.

### Strength of the Department

*Highly qualified faculty members*

*Well-equipped laboratories*

*Industry interaction*

*Excellent placement*

### Research Activities

*Active research is carried out by faculty member and students*

Research is carried in the frontier areas of the field like Biomedical Applications; Renewable Energy; Energy Technology & Management, Modelling & Optimization of Various Electrical/ Electronic Smart Devices

Research projects funding agencies - **AICTE, MNRE, SERB**

*47 conference papers and 24 journal publications in the year 2016-17 alone*

### Laboratories

Power System; Electrical Machines; Electrical Circuits and Simulation; Electrical Drives; Power Electronics; Control Systems; Analog System Design; Electrical Measurement; Advance Computing; Microprocessor, Microcontroller & Embedded System



## Student Activity

**SEED** the student society conducts various events like **Ankurit** (Annual Techno-cultural fest), social welfare programs like a school for the underprivileged students of the nearby villages, *Swachh Bharat Abhiyan* ....

Participation in various competitions intra-college and inter-college



## Conference/ Workshop organized by the Department

*“International Conference on Emerging Trends and Advances in Electrical Engineering and Renewable Energy” (ETAEEERE-2016)*, 17-18 Dec 2016

Three days workshop on *‘Computational Information Processing’* in collaboration with *Indian Statistical Institute, Kolkata*



## Achievements

Neha Agarwal student of 4<sup>th</sup> yr. received **NASCOM Dewang Mehta Award** for Academic Excellence in Siliguri, West Bengal

Sneh Ratna student of 4<sup>th</sup> yr. secured **1st position** in district and State level debate, Sikkim

## 1.5.4 Electronics & Communication Engineering

The department was established in 1997 and offers B. Tech, M. Tech and Ph. D. programme.

### Key Strength

*Highly qualified faculty members*

*Well-equipped state of the art laboratories*

*Student centric activities*

*Industrial interaction - Major project, minor project, internship, collaboration ...*

*Excellent Placement*

*World Class R&D facilities*

### Research and Development

Funding of research projects from govt. agencies like DRDO, Bose Institute, DRDL & AICTE

*Active research in frontier areas*

*Digital RADAR for Remote Sensing and characterization of Missiles and Light combat aircraft, 5G\_IoT*

*Remote Environment sensing for pre-cursoring of earthquake*

*Device and Nano Technology*

*Speech Processing*

*Antennas*

*Regular publications in journal and conferences...*



## Laboratories

Digital Electronics; *Microprocessor*; VLSI/ Embedded System, *Analog Electronics/ Electronic Device*; Basic Communication; *Advance Communication*; *Microwave*; Broad band Communication; *DSP/ SCS*

## Students Activity

**ESCA** (Student Society) regularly conducts workshops in various topics for the students

**ESCA** organizes techno-cultural fest

## Social Campaigns

**ECSA** conducts various social drives to financially support local school. It also engages in environmental protection and maintenance drive like tree plantation drive and cleanliness campaign

## Conferences/Workshop

*“International Conference on Communication, Devices and Networking”*, 3 - 4 June, 2017

## Faculty achievements

High value research project in IOT(5G)

Publication of books



## 1.5.5 Information Technology

The department was established in 1999 and offers B. Tech, M. Tech, BSc IT, MSc IT and Ph.D. programme.

### Strength of the Department

*Highly qualified faculty members*

*Well-equipped state of the art laboratories*

*Industry interaction - Major project, minor project, internship, industrial collaboration....*

*Excellent Placement*

*A strong Alumni network*

### Research and Development

Active research in frontier areas like Computer Networks, Wireless Sensor Networks, Distributed Systems, Cloud Computing, Data Mining, Image Processing & Pattern Recognition, Cryptography and Information Security, **E-Governance**, Speech Processing, Information Theory and Coding

*Funding from govt. agencies like AICTE and DYEITY*

No of publications in Journals and Conferences....

### Laboratories

Computing III, *Data Communication*, *Soft Computing*, *Artificial Intelligence*, *Distributed Systems* and *RFID*





## Student Activity

### Societal responsibility

Awareness programs under the banner of **SAMAJ and FORUM 2K** conducted in the nearby area for the community

### Cultural/Tech fest

**FORUM 2K** periodically organizes techno and cultural functions

## Conferences/Workshop in 2016-2017

National Conference on “*Communication, Cloud and Big Data (CCB)*”, 10 -11 Nov 2016

“*4<sup>th</sup> ISI Workshop for the North-Eastern Region on Pattern Analysis & Applications*” in collaboration with Computer Vision and Pattern Recognition (CVPR) Unit, *Indian Statistical Institute (ISI) Kolkata* 6 -10 Feb., 2017

## Achievements (Faculty/Student/Alumni)

**NASSCOM Dewang Mehta Excellence Award**, 2016 to Mr. Saurabh Shresth, a 4<sup>th</sup> year student of B.Tech (IT)

**Afterglow Pvt Ltd** a company registered under **SMUTBI-SMIT** with Mr. Ashish Anand, a student of Information Technology Department as the CEO of the company has been selected amongst the prestigious **Elevate 100**, as one of the **most promising startups**

amongst 1800 companies in a competition organized by the Government of Karnataka on 29 August, 2017

Department of Information Technology had the honor to be **selected by the Government of India** to offer **Diploma in e-governance (DeG)**, which is completely sponsored by the Government. Primarily, it is a platform to train mid-level government officers serving in North Eastern region of India



## 1.5.6 Mechanical Engineering

The department was established in 1997 and offers B. Tech; M. Tech and Ph.D. programme.

### Strength of the Department

*Highly qualified, dedicated and motivated faculty members.*

*Well-equipped state of the art laboratories*

*Well stocked departmental library*

*Industry interaction - Major project, minor project, internship, collaboration*

*Excellent placement*

### Research and Development

Funding of research projects by govt. agencies - *AICTE, NIF, RuTAG-NE (IIT Guwahati), DST*

Active research in frontier areas - Non-traditional Machining; Micro-machining; Conventional machining of advanced materials; Production management and optimization; Energy planning and management; Renewable energy; Advances in composite materials; Tribology

No. of publications in journal and conferences....

### Laboratories

*Basic workshop, Machine shop, Strength of Materials, Thermal Engineering -I & II, Metrology, Machine Dynamics, CAD/CAM, Energy system, Automobile, Advanced Machining, Computational, Post Graduate Research*



## Student Activity

### **Societal responsibility**

Organizing free medical health checkup camp in association with Red Cross Society and CR Hospital

*Supporting primary school with teaching aids*

### **Cultural/Tech fest**

**MEDUSA** organizes various techno and cultural activities

Participation in International Association for the Exchange of Students for Technical experience (**IAESTE**) scheme

*Allen Mathew Thomas –7<sup>th</sup> Semester (went to Vietnam), 2017*

*Vishal Choudhury –7<sup>th</sup> Semester (went to Turkey), 2017*

## Society of Automotive Engineering (SAE)

Organizing various technical events to promote students in the field of Automobile Engineering

Participation in various national and international events like Formula car racing, Go-Kart competition etc

## Conferences/Workshop organized

*“Advances in Mechanical & Manufacturing Engineering”*, 17 – 18 June, 2016.

*CATIA V5 R20*, 21 Feb, 2016

*“North East workshop on Statistical Quality Control & Six sigma practices”* in collaboration with ISI, Kolkata from 21 -23 Nov, 2016

*“International conference on Mechanical, Materials and Renewable Energy”*

**(ICMMRE-2017)**, 8 -10 December 2017

## Achievements (Faculty/Student/Alumni)

Smart wheel chair on 2<sup>nd</sup> position in inter college major project competition

SMIT Mechanical Engineering student's launched the first formula car from Sikkim

Sushant Kumar Jha, B. Tech graduate of 2015 has cleared UPSC IES 2017 exam with AIR 16

A number of students have qualified in *CAT & GATE* and pursuing higher studies in reputed institutes of India

## 1.5.7 Department of Management Studies

The department was established in 2000 and offers **BBA, MBA & Ph. D.** programme.

### Strength of the Department

*Faculty members with vast experience and expertise in diverse fields*

*Provide training in soft and generic skills to students and others in this region*

*Enhancing skills of Government officers*

*Managerial guidance to local industries and government agencies*

### Research and Development

Regular publications in reputed journals and conferences

Active research in various fields of management

### Societal Responsibility

Organizing various awareness programs such as Plantation Drive, Environment Protection, Health Drive....

Supporting underprivileged children of the local community

### Conferences/Workshop

Management Development Programme on “**Positive Change Management**”, for Industry Professionals, 28 February, 2017

### Faculty Achievements

*Experts in faculty selection committees of various institutions*

*Editor and Reviewer of various prestigious journals*

*Resource person and experts in various government and private organizations*

### Student Achievements

Won prizes in competitions like Business Plan Competition, State level Taekwondo competition, Table Tennis, Drama and Quiz



## 1.5.8 Department of Computer Application

The department was established in 2001 and offers **BCA, MCA & Ph. D.** program.

### Strength of the Department

- Highly qualified faculty members
- Excellent computing facility
- Industry interaction - Major project, minor project, internship, collaboration....
- A strong Alumni network

### Research and Development

- Research projects funded by AICTE and other agencies
- Active research in frontier areas
- Regular publications in conferences and reputed journals

### Student Activity

- Societal responsibility (Computer Application Student Society 'CASS')
- Organizing Blood Donation Camps, supporting underprivileged children's
- Organizing workshop on DBMS, HTML, JAVA, Networking using CISCO Packet Tracer for the school children's
- Cultural/Tech fest
- Workshop in collaboration with IIT Hyderabad (BrainTEch)

### Conferences/Workshop

- "Cyber Security (Ethical Hacking)", 14 - 15 Oct 2017
- "IC3 conference on Computing and Communication", 24 - 25 March 2018

### Achievements (Faculty/Student/Alumni)

- Viswasariya fellowship (DEITY)
- Q.I.P Fellowship, AICTE, Govt of India
- Govt. of India Sponsored project named Blood Donor Information System by Manoj Upadhaya, Md.Babloo, Punit Moda, Sony Choudhary



## 1.5.9 Chemistry

The department was established in 1997, offers MSc, Ph.D. and supports B.Tech program.

### Strength of the Department

*Highly qualified faculty members with post-doctoral experience*

*Well-equipped state of the art laboratories*

*Student centric activities*

*Infrastructure upgradation via FIST grant of DST*

### Research and Development

Applied for two patents: i) potential anticancer drug ii) Cadmium sensor

Research in frontier areas of chemistry

Publications in reputed journal and conferences

### Conferences/Workshop

Science Academies Lecture workshop on “*Emerging Trends in Chemistry and its Pharmaceutical Applications*” 30 – 31 October 2017

“*Recent Trends in Chemistry (RTC-2017)*” in collaboration with Association of Chemistry Teachers, Wilson College, Mumbai, 17 - 18 February 2017

### Achievements (Faculty)

Experts in faculty selection committees of various institutions

Editor and Reviewer of various prestigious journals

### Achievements (Student/Alumni)

Qualifying competitive exams like *NET/GATE*

Doctoral studies in India and abroad

Placement in companies abroad

Post Doctoral Fellows in various countries



## 1.5.10 Physics

The department was established in 1997, offers MSc, Ph.D. and supports B.Tech program.

### Strength of the Department

*Highly qualified faculty members with post-doctoral experience*

*Well-equipped state of the art laboratories*

*Student centric activities*

*Infrastructure upgradation via FIST grant of DST*

### R&D

Research in frontier areas of physics

Publications in reputed journal and conferences

### Student Activity

Societal responsibility

Active participation in Clean & Green Campus project, Digital India drive.

### Achievements (Faculty)

Experts in faculty selection committees of various institutions

Editor and Reviewer of various prestigious journals

### Achievements (Student/Alumni)

Qualifying competitive exams like *NET/GATE*

Doctoral studies in India and abroad

Mr. Umesh Dhakal, pass out student has cleared CSIR UGC-NET 2017 exam with AIR 13

Placement in companies abroad

Post Doctoral Fellows in various countries



## 1.5.11 Mathematics

The department was established in 1997, offers MSc, Ph.D. and supports B.Tech program.

### Strength of the Department

*Highly qualified faculty members*

*Student centric activities*

### Research and Development

Funding of sponsored research projects from govt. agencies

Active research in frontier areas of science and technology

Publications in reputed journal and conferences

### Conferences/Workshop

*“National workshop on Matrices and Graphs”*, January 2 - 7, 2017

*“National conference on Linear Algebra and its Application”*, 9 -10 January, 2017

### Achievements (Faculty)

Experts in faculty selection committees of various institutions

Editor and Reviewer of various prestigious journals





## 1.6 Programs and Eligibility Criteria

### 1.6.1 B Tech Programme

Duration: 4 years (Eight Semesters)

**Eligibility:**

(10+2) pass ( $\geq 50\%$  for General,  $\geq 45\%$  for SC/ST/OBC) with Physics, Mathematics and Chemistry/Computer Science/Informatics Practices/Biotechnology/Biology

**OR**

Diploma ( $\geq 50\%$  for General,  $\geq 45\%$  for SC/ST/OBC) in any branch of engineering awarded by a State Board of Technical Education

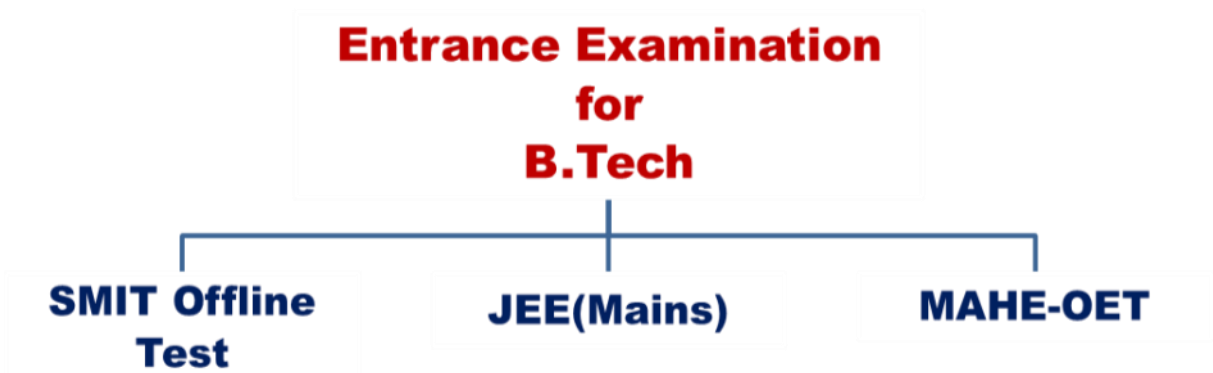
**Note:** Candidate appearing in qualifying examination may also apply for the entrance examination.

**SMIT offline Test** – Conducted by SMU specifically only for SMIT.

\* **JEE** – Conducted by CBSE, candidates need to apply and later submit the score sheet.

**MAHE-OET** – Combined entrance test for Manipal group of technological institutions.

\* SMIT does not participate in common counselling of JEE, Seats are allotted on the basis of JEE score under General, NE, Sikkim, Defense and Gorkha Territorial Administration (GTA) category.



**At the time of counselling**

**NE** – Valid permanent residence certificate is mandatory

**Sikkim** – Nominated by Director Technical Education, HRDD, Government of Sikkim

**Defense and Paramilitary** – Preference will be given to personnel stationed in Sikkim

**GTA** – Letter from Principal Secretary, GTA

**NRI** - Candidates interested to apply under the category of Non-resident Indians(NRI) / Person of Indian Origin (PIO), Foreign National/ Indian Worker of Gulf Countries should fill and submit the application form in the website.

Proof of category is mandatory along with NOC and equivalent educational certificates, wherever applicable. Format for Sponsorship letter for NRI applicant is given in Annexure I , Page 92.

**NOTE:** Candidates from **Bhutan** and **Nepal** are also eligible to appear in **SMIT Offline Test**. If selected, the admission will be given under General Category.

### 1.6.2 Lateral Entry in B. Tech

Duration: 3 years (Six Semesters)

**Eligibility:**

Three years' diploma in appropriate branch of engineering ( $\geq 60\%$  for General,  $\geq 55\%$  for SC/ST/OBC)

**OR**

B Sc with Mathematics as one of the subjects, ( $\geq 60\%$  for General,  $\geq 55\%$  for SC/ST/OBC)

#### **Admission of Students from Other Universities**

Admission in second year of engineering (III Semester) on transfer basis is permitted subject to fulfillment of University norms and availability of seats.

Candidates should contact Chairman, Admission along with marksheet/Grade Card and No Objection Certificate (NOC) from the institute last attended.

### 1.6.3 Bachelor of Business Administration (BBA)

Duration: 3 years (Six Semesters)

**Eligibility:**

Candidates should have passed (10+2) Examination ( $\geq 50\%$  for General,  $\geq 45\%$  for SC/ST/OBC)

### 1.6.4 Bachelor of Computer Application (BCA)

Duration: 3 years (Six Semesters)

**Eligibility:**

Candidates should have passed (10+2) Examination ( $\geq 50\%$  for General,  $\geq 45\%$  for SC/ST/OBC)

### 1.6.5 B.Sc. IT

Duration: 3 years (Six Semesters)

*Eligibility:*

Candidates should have passed (10+2) Examination ( $\geq 50\%$  for General,  $\geq 45\%$  for SC/ST/OBC)

### 1.6.6 M Tech Programme

Duration: 2 years( Four Semesters)

*Eligibility:*

Bachelor degree in relevant branch of Engineering ( $\geq 55\%$  for General,  $\geq 50\%$  for SC/ST/OBC)

An engineering graduate in any discipline/ M.Sc. in Electronics/Computer Science/ Information Technology/Physics/Mathematics/ Statistics/ MCA are eligible for M. Tech (CSE/IT)

Entrance Exam – GATE/MAHE-OET/SMIT

Sponsored candidates may also apply.

*Note : Teaching assistantships are awarded to deserving candidates.*

### 1.6.7 Master of Business Administration (MBA)

Duration: 2 years (Four Semesters)

Specialization: Dual specialization in Marketing and Human Resource Development / Finance / Systems / Operations Management / Project Management / Quality Management / Banking Management / International Business Management

*Note: Other than Marketing, Second Specialization will be offered subject to minimum strength of 10 students per specialization.*

*Eligibility:*

Graduate ( $\geq 50\%$  for General,  $\geq 45\%$  for SC/ST/OBC) in any discipline.

Candidates appearing in Management Aptitude Test (MAT)/Combined Aptitude Test CAT/GMAT

**OR**

Entrance exam conducted by SMIT/MAHE-OET followed by GD and PI

## 1.6.8 Master of Computer Application (MCA)

Duration: 3 years (Six Semesters)

### Eligibility:

Bachelor's Degree ( $\geq 50\%$  for General,  $\geq 45\%$  for SC/ST/OBC) (3 years duration) with Mathematics at 10+2 level or at Graduate Level

Entrance Examination conducted by SMIT **OR** MAHE-OET

## 1.6.9 MCA Lateral Entry

Duration: 2 years (Four Semesters)

### Eligibility:

BCA, B Sc (IT/Comp. Sc.) with Mathematics at 10+2 level or at Graduate Level

( $\geq 50\%$  for General,  $\geq 45\%$  for SC/ST/OBC)

Entrance Examination conducted by SMIT **OR** MAHE-OET

## 1.6.10 M.Sc. IT

Duration: 2 years (Four Semesters)

### Eligibility:

BCA / B.Sc. Computer Science (Gen and Hons.) / B.Sc. (IT) with Mathematics in 10+2 level

Bachelor's degree in any discipline with Mathematics/ Statistics as one of the subjects at 10+2 level or Graduation

( $\geq 50\%$  for General,  $\geq 45\%$  for SC/ST/OBC) in the qualifying examination

## 1.6.11 M Sc (Physics/Chemistry/Mathematics)

Duration: 2 years (Four Semesters)

### Eligibility:

B Sc (Gen/Hons) in the relevant subject

*Note: Candidates from Bhutan and Nepal are also eligible to apply for the courses offered by SMIT. If they are selected on the basis of merit, the admission will be given under general category.*

## 1.7 Infrastructure/Facilities

### Hostel Facilities

All the students are provided twin sharing well furnished rooms with attached bathrooms.

Night Canteens are available in all hostels.

Non interrupted electricity and water supply is ensured throughout the year.

Automated Laundry System is being established.

### Library

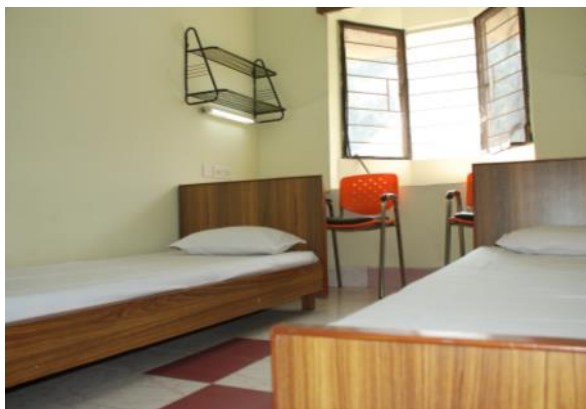
The institute has excellent library facilities serving to diverse needs of the students.

Online journals and online access to libraries of various institutes are some of the resources availed by the users.

### Library Timings

Week days: 9:00 AM to 8:00 PM

Sundays/Holidays: 9:00 AM to 4:00 PM



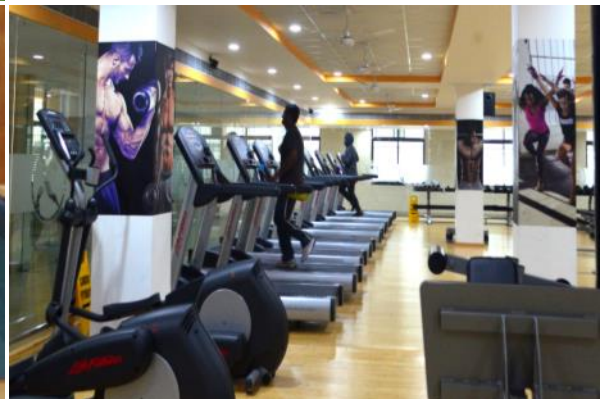
## General Facilities

The shopping Centre of the campus consists of the following facilities: Union Bank of India, ATM of Axis Bank & Union Bank of India, Post Office, Stationery Shop, Binding, Lamination, Xerox Shop, Beauty Parlour/ Barber Shop, Pharmacy etc.

In addition, stationery shop, SMIT Brand Shop and SBI ATM are located within the academic premises.

## Food Court & Indoor Sports Complex (MARENA)

The institute has an ultra-modern indoor sports complex and a sprawling Food Court is also a part of the complex. Various facilities available are: Temperature Controlled Swimming Pool, Bowling Alley, Squash Court, Multi-Purpose Gym Hall, Yoga Room, Aerobics Room, Meditation Room, Table Tennis, Foos Ball, Carrom, Sauna Bath, Steam Bath, Badminton Court, Basket Ball Court, Auditorium and Tennis Court.



## 1.8 Student Support

### 1.8.1 Teacher Guardian (TG) Scheme

It is a unique scheme wherein the students are mentored by faculty member as a teacher, as a guardian and as a friend. Regular feedback and interaction with the parents are integral component of this scheme. This is a scheme which helps the student to bond with the new environment and place naturally.

### 1.8.2 Students' Benevolent Fund

The scheme provides financial assistance to the students, who are facing problems due to unforeseen circumstances in the family. It helps the needy students to overcome the rough period and smoothly complete their study in the institute.

### 1.8.3 Medical Facilities

SMIT Health Centre provides primary healthcare to the students and staff. Resident doctors and nursing staff along with ambulances are available round the clock. In addition, referral hospital of the University located at Gangtok provides general and specialized services.

Students are covered under **MEDICARE** scheme for treatment in a *super specialty hospital* under university.

## 1.9 Student Activities

### 1.9.1 Student's Council

Student's Council is the elected body of students comprising of Vice President, General Secretary and secretaries, which looks after the students' requirement in the campus. Student's Council plays an active role in promoting techno-cultural/sports spirits amongst the students through various events spread across the year.

Student's Council members interacts with the administration on a continual basis and are a part of various important committees that addresses the concerns of the student community.

Student's Council can be considered as a pride of the institute and has contributed significantly towards the betterment of student's experiences in the institute.



## 1.9.2 Students Club/Societies

Large number of student's club function under the office of Associate Director (Students' Affairs). In addition, every department has its own student clubs/societies.

These clubs organize large number of events and serves to enrich the students experience in myriad form.

## 1.10 Institute Scholarship

**30%** concession on **Course fee** for B. Tech candidates having average PCM (Physics, Chemistry & Mathematics) percentage 90 and above.

**10%** concession on **Course fee** for B. Tech candidates having average PCM (Physics, Chemistry & Mathematics) percentage between 80 and 90.

**75%** concession in **tuition fees** are given to students sponsored by Govt. of Sikkim.

**Note: Candidate can avail only one type of scholarship. Institute Scholarship Schemes (i) and (ii) is applicable to the B. Tech students during entire duration of study subject to fulfilment of criteria of CGPA  $\geq$  6.5, and no disciplinary case.**





## List of the students, awarded Institute Scholarship during the year 2017-18

Name	Branch	Name	Branch
Bandla Sai Ramya	CSE	Sunny Kumar	CSE
Battu Phalguna	ECE	Medha Mansi	ECE
Anusha Nampally	ME	Ayon Sharma	CSE
Sanakkayala Eswa-	CSE	Ashwin Adarsh	CSE
Pallerla Gopi Reddy	CSE	Ravi Agarwal	CSE
Srikanth Sarma	CSE	Sara Singh	IT
Ravi Tejaswina	CSE	Ishaan Mukherjee	ME
Abhinash Rabha	CIVIL	Garima Kushwaha	CSE
Nicky Tahbildar	ME	Anmol Thakur	CSE
Arsh Kumar Shaw	CSE	Bhagwati Dangi	IT
Palak Agarwal	CSE	Muskaan Poddar	ECE
Y Ningthoibi Devi	CSE	N. Gagan Sai Reddy	CSE
Stevens Philip	CSE	Samir Prasai	IT
Daipayan Hati	CSE	Rebecca Shruti Soren	CSE
Saqlain Mustafa	ME	Diplu Baishya	CSE
Litisha Mohapatra	CSE	Arunudoy Buragohain	CSE
Nishchal Bhattarai	CSE	Arnab Biswas	CSE
Nandita Sarkar	ECE	Anjali Agarwal	IT
Dushyanth Chow-	CSE	Sweta Sinha	CSE
YSVB Prakash	CSE	Matra Jishnu Sai	EEE
Shreesh Narayan	CSE	Sharmila Saha	ECE
Rishabh Yadav	CSE	Niharika Rajesh Modi	CSE
Pratyush Kumar	ECE	Shivam Raj	CSE
Manvendra Singh	CSE	C.Naga Pavan Kumar Reddy	CSE
Arsh Mishra	ME	Siddhant Sharma	CSE
Sejal Burnwal	CSE	Bishal Paudel	ECE
		Shradha Bhardwaj	CSE



## 1.11 Achievements

- i. Afterglow Tech (OPC) Pvt Ltd, the startup company has been selected as one of the most promising startups from 1800 companies across India at ELEVATE 100, organized by the Government of Karnataka on 29th August, 2017 at Hotel Lalit Ashok Bangalore after four layers of selection process. The company will be receiving grants of up to Rs 35 Crores as part of the initiative.
- ii. A multi-crore project for development of latest radar system in collaboration with DRDO Hyderabad has been successfully completed and tested.
- iii. SMIT takes pride in being selected by the Government of India, as a centre for the whole North East region to offer Diploma in e-Governance targeting mid level government officials of north east region.

## 1.12 International Collaboration

Recently SMIT has signed MOUs for international collaboration for promoting academics and research with

- I. *Baekseok University (BU), Republic of Korea*
- II. *AUREL VLAICU University of Arad, Romania*

## 1.13 Recent Developments

- i. **High performance supercomputing facility – Param Shavak in collaboration with C – DAC, Pune** has been established in Research & Development centre of SMIT.
- ii. A MoU has been signed with The International Association for the exchange of students for Technical Experience (IAESTE) for short term internship/projects.



## 1.14 Training & Placement

Training & Placement (T&P) Cell is the hub of all interaction between the Corporate, Industries, and Academic/Research Institutions, with SMIT. The T&P Cell functions with the following objectives:-

- i. To provide in-house training to students to supplement their curriculum.
- ii. To arrange the final semester industrial projects to work on live problems (Practice Schools).
- iii. To bring Industrial establishments to the campus for recruitment of students.

To achieve the objectives, T&P organizes courses and training programmes to enhance the aptitude and skill of the students to increase employability. Regular feedbacks are also obtained from the industries on the advances in technology vis-à-vis the facilities in the Institute and appropriate actions are taken.

T&P Cell also organizes events like seminars, workshops, guest lectures and corporate interactions.

### 1.14.1 Industry Orientation/ Projects & Placements

Students pursue Project Training in Many Premier Industrial/Research Establishments such as: Dell, TCS, Ericsson, Wipro, Wells Fargo, Safran, Ixia, Think & Learn, Titan, HCL and many more.

Most of the students are provided stipend during Internship by the industries.

The Companies, which visited SMIT for Campus Interviews- AIS, Adhunik Group, Amazon, Barclays, Bosch, Capgemini, CGI Corporation, Cummins India, Dell India, Ericsson, Infoway, Intel, ITC Infotech, Ixia, Just Dial, Poornam Infovision, Price Waterhouse Coopers, Rechner Software, Safran Securities, Shriram Transport, Spanco, Tata Communication, Tech Mahindra, Think & Learn, Thoughtworks, Titan, Wells Fargo, Wipro Technologies, Zaloni, Zomato, Zoojoo.Be



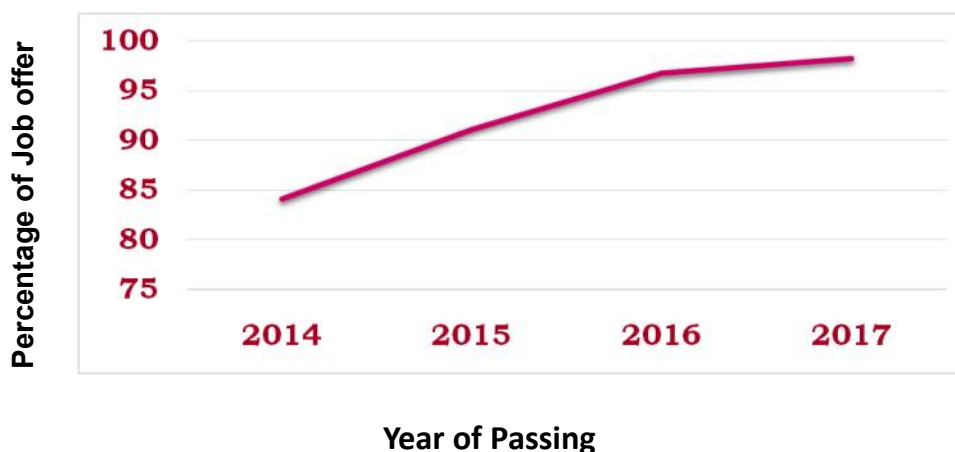
## Placement Statistics

Year of Passing	Placement %	Highest Salary (LPA)	Average Salary (LPA)
2017	98.30	12.0	4.5
2016	96.85	8.0	4.5
2015	91.11	8.0	4.08
2014	84.10	6.0	3.5

## Star Recruiters (2017 Passout Batch)

<b>AMAZON</b> (12 LPA)	<b>SPRINKLR</b> (12 LPA)	<b>HSBC TECH</b> (12 LPA)
DELL (8 LPA)	THOUGHTWORKS (7.35 LPA)	THINK & LEARN (7 LPA)

Summary of Compensation – 2017 Passout Batch	
Highest Salary	INR 12.00 LPA
Average Salary	INR 4.50 LPA
Median Salary	INR 3.28 LPA
Mode Salary	INR 3.20 LPA



**Microsoft** offered the highest salary package of **INR 22+ LPA** for **2018** batch.

## 1.14.2 Recruiters & Internship

Adhunik Group	JCB
AGS	Jhunsons Chemical Private Limited
Airtel	JUST DIAL
AMAZON DEVELOPMENT	Keross
AMAZON SUPPORT	Larsen & Toubro
Apollo Tyres	Mercedes-Benz India Private Ltd
ASAHI INDIA GLASS	Nextgen Quant Pvt. Ltd.
Astha Tech	Nomura
BARCLAYS	Panasonic India
BMA	Pipavav Defence And Offshore Engineering Company Ltd
BUREAU VERITAS	Quetzal Online Private Ltd
Capgemini	QUINOOX
Central Bank of India	RECHNER SOFTWARE
CGI	Reliance
CLICK ON CARE	S.K Samanta
CUMMINS	SAFRAN
DELL	Sankhya Infotech Ltd
DRDO	Shriram Finance
Electrolab	Siemens Ltd
Ericsson	Sistema Shyam Teleservices Limited (MTS)
E- Construct	SOLARIZE GLOBAL
FL SMIDTH	SONY
G.K Insfrastructure	SourceN
General Motors	Spanco
Genesis	SPRINKLR
HCL	ST Robotix
HDFC Bank	Stesalit
Hewlett Packard	Tata Consultancy Services (TCS)
HSBC TECHNOLOGY	Tata Hitachi
Huawei	Tata Motors
IBM	Tech Asia
Ikya	Tech Mahindra
Indian Airforce	Titan
Indian Army	TVS
Indian Institute of Remote Sensing (IIRS)	Unikul Solutions
Indian Navy	Unipolar India Pvt. Ltd..
Indian Space Research Organisation (ISRO)	UST Global
Infosys	Vehere
i-Genesys	Wells Fargo
INTEL	Wipro
Ixia	ZALONI
J.K Insfratructure	ZEBRONICS
Jabong	Zoojoo.Be

### 1.14.3 Special Coaching & Grooming

Employability Training imparted by Industry Partner

MoU with Tech-Mahindra for Capability Development, up skilling graduate and postgraduate students/associates and faculty members/SMEs at both Tech Mahindra and SMIT. Tech Mahindra provides curriculum assistance for the courses.

Periodical Workshops / Lectures by Industry Leaders

GATE / GRE Coaching facility



## 1.14 Manipal University Technology and Business Incubator (SMIT Satellite Center)

The Center incubates and nurtures early stage entrepreneurial ventures based on Technology and Innovation by providing infrastructure, consultancy and seed money to promising young entrepreneurs to achieve their dreams of starting their own firm.

**Some of the companies that are presently incubated are:**

1. *After Glow Pvt Ltd*
2. *Untapped Technologies Pvt Ltd.*
3. *Gooks Pvt Ltd*
4. *Helpean Pvt Ltd*

Some of the groups in the process of designing a MVP (Minimum Viable Products) are:

1. **AI controlled Bicycle:** The external device will be capable of understanding the behaviour of the user thereby adjusting the gears to provide smooth cycling experience.
2. **Wearable Device:** The device helps people with Tunnel Carpel Syndrome or Musculo Skeleton Disorder having difficulties in using a computer mouse.
3. **Solar Car:** A proposal in its conceptualization stage to design a solar operated car that can be used in remote location and areas with limited or no access to electricity.
4. **Low Cost Graphene:** A proposal for production of low cost graphene from synthetic materials which will be much lower in cost than that presently available in the market.

**Recent activity/achievement**

1. Entrepreneurs Meet 2017 was a huge success with participation of famous innovator *Mr Sonam Wangchuk*, Founder and Director of Himalayan Institute of Alternatives, Ladakh and Who's Who from various industries, corporations and investors. It was sponsored by North Eastern Council, Govt of India and also supported by NASSCOM.
2. After Glow Pvt Ltd has been selected as one of the prestigious Elevate 100, amongst 1800 participating companies, organized by the Government of Karnataka. Selected startups will be receiving grants of up to Rs 35 Crores with various incentives from the Government. Google will provide \$3000 worth cloud credits for startups registered with Startup Cell and \$20,000 worth of credits to the winners of Elevate100.



## Our Entrepreneurs

The innovative aptitude of our students motivates them to become entrepreneurs. The following are few companies floated by our illustrious alumni-

**Name of Company:** *zoojoo.be*

**Co-founder:** *Avinash Saurabh (B.Tech 2009)*

zoojoo.be is a game based social wellness platform that unites the workforce to form healthier habits. The platform leverages on the tremendous power of the trusted social network at our workplace to motivate employees to form healthier habits. *Zoojoo.be has raised \$1 million (Rs 6.4 crore) from US-based venture capital fund RoundGlass Partners.*

**Name of Company:** *Vehere Interactive Pvt Limited*

**Co-founder:** *Naveen Jaiswal (B.E 2002)*

Vehere was founded in 2006 to revolutionize the communication and cyber intelligence technology, with the ultimate goal of neutralizing crime and terror. Today Vehere is actively developing technologies to make this possible, with the goal of enabling a safer world. It is backed by cutting edge researches and close to a decade of experience with deployments ranging from tactical solutions to large nationwide strategic monitoring centers across continents.

**Name of Company:** *Nischint Technologies Ltd*

**Co-founder:** *Raghav Mimani (B.Tech 2003)*

Nischint technologies are into development of applications / proactive tools for parents to keep track of their children's activity with regards to the use of internet in mobile gadgets and the ever-evolving social media world. This UAE based firm has earned laurels across the globe for its unique technology driven product.

**Name of Company:** *Zify*

**Name of Co-founder:** *Anurag Singh Rathore (B.Tech 2008)*

The theme of this techno firm is to make travel in the comfort of a car at a very affordable rate. This firm develops applications on carpooling thus assisting commuter to find best options available for daily commute.





**Sikkim Manipal Institute of Medical Sciences  
(SMIMS)**

## 2 Sikkim Manipal Institute of Medical Sciences (SMIMS)



Sikkim Manipal Institute of Medical Sciences (SMIMS) along with College of Nursing and College of Physiotherapy is located at Tadong. SMIMS, a constituent unit of the Sikkim Manipal University (SMU), offers MBBS, MD/MS, BSc Nursing, M.Sc Nursing and Physiotherapy, Integrated M.Sc. Medical Biotechnology courses. The Central Referral Hospital and STNM Hospital in Gangtok offer clinical training opportunities to students.

The Central Referral Hospital (CRH), Tadong, is a 500 bedded Tertiary Care Hospital. It is a nine storeyed building with a floor space of more than 3,00,000 sq.ft. The hospital has 21 specialties, 8 operation theatres with state-of-the-art equipment. CRH is an ISO 9001:2000 certified hospital by BSI Management Systems with state-of-the-art medical record Library, Medical auditing and computerized Hospital Information System. We function as per our carefully drafted policies and procedures with special emphasis on infection control practices.

# Message from The Dean



Sikkim Manipal Institute of Medical Sciences has been in forefront, imparting high quality Medical education in North East India since 2001.

It has been my privilege to be Dean of this esteemed institution for almost five years.

Our strength lies in uniqueness of our programmes, innovative and integrated curriculum with special emphasis on medical research and evidence based medical practice.

We have team of highly qualified and experienced full time faculty, supported by equally dedicated Para-Medical staff. There is transparency in admission process and this is minutely supervised by dedicated faculty.

You will be exposed to friendly atmosphere, with environment conducive to upgrade your professional skill as well as communication, humanism, so that you remain forever a compassionate, considerate and ethical in your professional and personal life as well.

I wish you all the best.

A handwritten signature in blue ink, appearing to read 'G. S. Joneja'.

**Air Marshal G. S. Joneja, VM (Retd.)**

## 2.1 Course and objectives

### 2.1.1 Bachelor of Medicine and Bachelor of Surgery (MBBS) (Four years and Six months)

Sikkim Manipal Institute of Medical Sciences offers MCI recognized MBBS course as per curriculum prescribed by the Medical Council of India (MCI). This course carries the educational and technical excellence, which is a hallmark of all Manipal Group organizations. During the course, students are trained in theoretical and practical aspects of basic, pre- and para-clinical subjects and receive state of the art training from fully equipped and staffed medical college and teaching hospital. The teaching hospital is a tertiary care center serving people of Sikkim and North East India, in general and offers excellent scope for hands on clinical training. The teaching staff are experienced and trained in modern teaching learning methods. SMIMS has adopted policy of constantly evolving and updating teaching learning systems in accordance with MCI regulations from time to time. The students are exposed to novel learning environments facilitating better learning. For example, students get exposure to seminar presentations developing communication skills, participating in integrated teaching sessions, exposure to patient care in community setting and participation in short term research projects. The objective of training is not only to prepare the students to be responsible members of the community, but also to prepare them for higher education and training in India and abroad. The method of teaching is fully geared to achieve these objectives. SMIMS has also a scheme of teacher- guardian support system, which ensures that each student receives individualized academic and psychological support and career related counseling from members of the faculty during the entire study period. Thus, students pursuing MBBS at SMIMS not only undergo rigorous training, but also receive support to become good individuals and responsible citizens of the country.



## 2.1.2 Doctor of Medicine (MD)/ Master of Surgery (MS)

As approved by the Medical Council of India (MCI), departments of SMIMS have been started, namely.

- (i) MD in Community Medicine (2 seats)
- (ii) MD in General Medicine (2 seats)\*
- (iii) MD in Pharmacology (2 seats)
- (iv) MD in Biochemistry (2 seats)
- (v) MD in Paediatrics (2 seats)\*
- (vi) MS in ENT (2 seats)\*
- (vii) MS in OBG (2 seats)
- (viii) MD in Physiology (3 seats)\*
- (ix) MD in Psychiatry (3 seats)\*
- (x) MD in Microbiology (2 seats)

\* Subject to recognition by the MCI

## 2.2 Eligibility Criteria for Admission

### 2.2.1 Bachelor of Medicine and Bachelor of Surgery (MBBS)

All candidates must be 17 years of age or older as on December 31, 2018.

To be eligible for admission to MBBS course, a candidate must have passed in the subjects of Physics, Chemistry, Biology/Bio-technology and English individually and must have obtained a minimum of 50% marks taken together in Physics, Chemistry and Biology/Bio-technology at the qualifying examination (10+2 or equivalent). In respect of candidates belonging to Scheduled Castes, Scheduled Tribes or other Backward Classes the minimum marks obtained in Physics, Chemistry and Biology/Bio- technology taken together in qualifying examination shall be 40% instead of 50% from the recognized boards.

*In addition must have qualified in the NEET conducted by CBSE.*



## 2.2.2 MD/MS

The candidate must have passed MBBS with internship completing by 31st March 2018. The selection will be as per merit of NEET Score.

Admissions will be through the merit list of NEET. Candidates have to apply to Sikkim Manipal Institute of Medical Sciences separately. In the event of any change in admission policy by the MCI necessary amendments will be put up on the website [www.smu.edu.in](http://www.smu.edu.in)

### NOTE

- (1) The distribution of number of seats under respective categories is provisional and liable to change on Government orders/decisions by the Governing Council.
- (2) The authority reserves the right of disqualifying the application/candidature of any applicant at any stage of processing if the information submitted is found to be incorrect or incomplete.

## 2.3 Categories

Criteria for consideration under different categories:

### 2.3.1 Sikkim Category (only for candidates of Sikkim)

Applicants seeking admission under this category should contact:

The Director of Technical Education, HRD Department, Govt. of Sikkim, Gangtok.

### 2.3.2 General Category

Any candidate who is a citizen of India is eligible to apply under this category. Admissions are based on merit obtained in the NEET. **In addition to these, any vacant seat from other categories will be filled under General category.**

### 2.3.3 North East Category

Permanent residents of Assam, Arunachal Pradesh, Nagaland, Mizoram, Tripura, Meghalaya, Manipur and Sikkim are eligible to apply. Domicile/permanent residence certificate from the appropriate authority issued in the year of admission in respect of applicant /parent of the applicant is essential for consideration in this category. Admissions are made on the basis of rank obtained in the NEET.

### 2.3.4 Defence Category

Wards of serving defence personnel are eligible to be considered under the category provided, parent(s) of the candidate who is a defence personnel must be borne on strength of a military unit located in Sikkim as on 01/01/2018. Admissions

are made on the basis of merit obtained in NEET conducted by CBSE.

For consideration in this category the following certificates are to be produced by the parent along with the application.

Certificate from Commandant / Commanding Officer / Adjutant of their respective units.

Copy of posting order to Sikkim.

Copy of joining report from appropriate authority based in Sikkim. (D/O Part II order / casualty)

Any candidate of Defence personnel not fulfilling above criteria are advised to apply under General Category.

Vacant seats in Defence category will be converted to General category.

### 2.3.5 Management Category

Any candidate who is a citizen of India is eligible to apply under this category. Admission is based on merit obtained in the NEET. NRI candidates can also apply under this category.

## 2.4 Category Options

The candidate must exercise his/her options for a maximum of two categories out of the following categories as per the eligibility:

- **General including Defence**
- **North East**
- **Management**

Once the application form is submitted, the choice of categories cannot be changed.

After the candidate is allotted the seat under a particular category, no switching of allotted seats within categories is allowed.

Once the candidate is allotted the seat, he/ she does not become eligible to appear for counselling in other categories.

## 2.5 Counselling Procedure

The list of candidates eligible to attend the counseling, counseling schedule, venue and other relevant details will be made available on our website [www.smu.edu.in](http://www.smu.edu.in)

Sikkim Manipal Institute of Medical Sciences follows Common Counselling and the counselling is conducted under the overall superintendence, direction and control of the State Government of Sikkim. Information on counselling, counseling schedule, venue and other relevant details for MBBS and MD/MS will be made available in [www.smu.edu.in](http://www.smu.edu.in) & [www.sikkimhrdd.org](http://www.sikkimhrdd.org)

Physical presence of the candidate at the counseling is mandatory. If a candidate is prevented by unavoidable circumstances from being physically present for the counseling, he/she may authorize another individual to represent him/her at the counseling.

This representative must carry the authorization letter and must bring all documents and full fee. **Absence/late reporting of the candidate or his/her representative at the indicated reporting time / attendance time and date will result in the instantaneous forfeiture of any claim for a seat.**

The choice of course made by the candidate/ representative is final and binding and cannot be altered under any circumstances.

Only the candidate/representative will be allowed into the counseling hall. They will be called in the order of their ranks and offered the seats available at that point of time.

### 2.5.1 Waitlist

Candidates will be waitlisted as per their rank order in the counseling.

Candidates who opt only to be waitlisted need not pay any fee until they receive the selection intimation from the institution that they have been selected for admission from the waiting list as a consequence of withdrawal or cancellation of admission of any originally admitted candidate.

### 2.5.2 Documents

Following Original Documents along with four sets of self-attested copy of each document are to be produced at the time of Counseling for verification by the institute.



### 2.5.2.1 For PG MD/MS

NEET Score Card

NEET Admit card- Original

MBBS Mark sheet (All four years)- Original

Internship completion certificate - Original

MBBS Degree Certificate - Original

MBBS Registration Certificate - Original

Migration certificate from previous University/Board. - Original

Birth Certificate - Original

Conduct and character certificate to be obtained on the school/college letter head/pad. - Original

Transfer certificate or school/college leaving certificate issued by the school/college. - Original

Students who have passed MBBS from foreign Universities has to produce: - Original

a) Eligibility Certificate from Medical Council of India

b) Result of MCI Screening test.

Sponsoring/domicile certificates for various reserved categories. - Original

Four recent and identical passport size photographs.

Pan Card (of the payee) Original -for Verification.

Aadhaar Card (Candidate) Original - for Verification.

***(No other certificate in lieu of this will be accepted)***

### 2.5.2.2 For MBBS & Integrated MSc. Medical Bio Technology:

NEET Score Card ( for MBBS)

NEET Admit card- Original ( for MBBS)

Class X Mark sheet- Original

Class X Pass certificate - Original

Class XII Mark sheet - Original

Class XII Pass certificate - Original

Birth Certificate – Original

Migration certificate from previous University/ Board – Original

Conduct and character certificate to be obtained on the school/college letter head/pad. – Original

Transfer certificate or school/college leaving certificate issued by the school/college. – Original

AIU Equivalence Certificate for candidates with school level qualification from schools affiliated to Foreign Board. – Original

Gap certificate if passed Class XII on or before 2018. - Original

Sponsoring/domicile certificates for various reserved categories. - Original

Documents as required for admission in Defence & North East categories - Original

Four recent and identical passport size photographs.

Aadhaar Card (candidate) Original - for Verification.

Pan Card (of the payee) Original -for Verification.

***(No other certificate in lieu of this will be accepted)***

***In case of any suspicion over the authenticity or genuineness of the testimonials, the reference may be made to the university or the Board which issues certificates to the student and the admission be subjected to the authentication.***

**NOTE:**

Candidates are advised to keep self attested copies of above certificates with them.



## 2.6 Facilities Available

### 2.6.1 Hospital

Presently the Central Referral Hospital has 500 beds. It is a nine storeyed building with a floor space of more than 3,00,000 sq. ft. The hospital has 21 specialities ,8 operation theatres and state-of-the-art medical equipment.



### 2.6.2 College

The college is fully equipped and staffed. The college is housed in an imposing building with all modern facilities. All non-clinical and clinical Departments are fully operational.

### 2.6.3 Lecture Halls

There are adequate numbers of lecture halls equipped with modern audio-visual teaching aids.

### 2.6.4 Laboratories and Dissection Hall

There are Laboratories with state-of-the-art equipment as per the regulatory bodies. The dissection hall is large enough for 150 students to work simultaneously.

### 2.6.5 Computers

Internet and Wi-Fi facilities are available in the College.

### 2.6.6 Library and Reading Rooms

The library has 15272 text and reference books and subscribes to 200 e-Journals and 92 National and International Journals. Internet and Medline facilities are available for students and faculty.

### 2.6.7 Hostel

The Institute is fully residential. All undergraduate students are expected to stay in the hostel. Only permanent local residents are exempted. The nine storied building houses 200 rooms. Each room is furnished with a mattress, a study table, a chair, a cupboard/shelf for each student. Every room has an attached toilet, service area and hot water facility. An exclusive dining hall with a modern kitchen and mess is also housed in the hostel building. The mess provides vegetarian / non-vegetarian meals. Dining in the mess is compulsory for all inmates of the hostel. The students will be provided with three seater rooms.



### 2.6.8 Bank

Canara Bank operates on campus. There are also ATM facilities of HDFC, Axis Bank and Canara Bank.

### 2.6.9 Sports

Facilities for Tennis, Volleyball, Basketball, Table Tennis and Badminton are available. The college also has an active cricket team.

### 2.6.10 Medicare (Medical Insurance)

All students are covered by the Medical Insurance Scheme (Medicare) provided by the Institute. There is a separate ward reserved for students at the Central Referral Hospital (CRH).

### 2.6.11 Teacher Guardian Scheme

Under this scheme, each student is allotted a specific teacher guardian who provides emotional support, monitors academic performance, provides necessary guidance to his/her ward and communicates regularly with the parents of the student. This scheme has received tremendous support from students and parents alike.



# SIKKIM MANIPAL COLLEGE OF NURSING

(A Constituent College of Sikkim Manipal University)



## COURSES OFFERED

BSc. Nursing

MSc. Nursing

Sikkim Manipal College of Nursing  
5th Mile, Tadong, Gangtok-737102  
E-mail: [principal.nursing@smu.edu.in](mailto:principal.nursing@smu.edu.in)  
Admission Cell: 03592 270389  
College of Nursing: EPABX: 03592-270534, Extn-281,144  
Direct No.: 03592-232263

(Available from 9 AM to 5 PM on working days)

[www.smcon.smu.edu.in](http://www.smcon.smu.edu.in)

### 3 Sikkim Manipal College of Nursing (SMCON)

The Sikkim Manipal College of Nursing (SMCON) is one of the constituent colleges of Sikkim Manipal University. SMCON imparts four year B.Sc. Nursing Degree Programme and Master of Nursing of 2 years. Both the programmes are recognized by the Indian Nursing Council and State Nursing Council. Programmes at SMCON are directed to upgrade the critical thinking skills, competencies and standards required for practice of professional nursing and midwifery. The degrees are awarded by the Sikkim Manipal University. Students from all over the Country are eligible to take admission in these programmes.



## 3.1 Key Features of SMCON

Recognized by state & Indian Nursing Council ; approved by Government of Sikkim

*Focuses on nursing excellence i.e. clinical expertise, quality management & professionalism*

Equipped with modern educational system

*Uses the problem solving approach in teaching*

Best-in-class infrastructure facilities

*Designs INC curriculum to facilitate students in pursuing higher education in India and abroad*

Own teaching hospital for developing clinical skills

*Values personal grooming*

Competent & experienced nursing faculty members

*Enjoys excellent facilities for hostel, mess, sports etc.*

Encourages students to shine in extracurricular activities

*Provides opportunities to engage in community services*

Provides opportunities to grow in diverse culture of the campus

*Graduates receive placement offers by reputed organizations*

## 3.2 Number of Seats

- BSc Nursing : 100
- MSc Nursing : 25

## 3.3 B.Sc. Nursing

### 3.3.1 Duration: 4 years

### 3.3.2 Scope for the Graduates

- There is a vast scope of nursing all over India and in the world today. The demand for Indian nurses in developed countries like USA, UK and others is increasing tremendously.
- Graduates can work in Government Organization, Non-government Organization, Educational Institution, Community Setting, Army Nursing, Navy Nursing, Railway Nursing, School Health Nursing etc.
- Graduates can be - Nurse Clinician, Nurse Educator, Nurse Administrator or Nurse Researcher.



- They can serve in the capacity of a staff nurse, sister and/or a supervisor in the branches of Medical Nursing, Surgical Nursing, O.T. Nursing, Critical Care Nursing, Cardiothoracic Nursing, Neurological Nursing, Child Health Nursing, Mental Health Nursing and in Gynae, Maternity and Obstetrical Nursing in hospital setup.
- Community Health Nursing plays an extremely significant role in working for health and in implementing the National Health Programmes, especially in MCH & FW programmes
- There is scope of higher studies i.e. Masters, M. Phil and Doctorate in Nursing
- There are opportunities for better earnings. Graduates can earn a competitive salary in India or abroad.

### 3.3.3 Eligibility Criteria for Admission in BSc. Nursing Programme

1. Minimum education: Candidate must have passed in 10+2 examination with Physics, Chemistry, Biology & English with minimum aggregate of 45% marks & pass in each subject from recognized board under AISSCE/ CBSE/ ICSE/ SSCE/ HSCE or other equivalent Board. 5% relaxation of marks for SC/ST/OBC candidates will be given.
2. The minimum age for admission shall be 17 years on 31st December of the current year
3. Candidate shall be medically fit.

### 3.3.4 Documents required for Admission

The following documents in original & two sets of attested photocopies are required at the time of admission:

1. Mark sheet of class X & XII
2. Pass Certificate of XII
3. Proof of age/date of birth (10th standard certificate/birth certificate)
4. Migration certificate
5. Transfer certificate
6. Character certificate
7. Six copies of recent passport size photograph
8. SC/ST/OBC certificate for claiming relaxation of 5% marks in eligibility
9. Domicile / PRC Certificate (for North East category)
10. AADHAAR Card ( candidate) and PAN card ( of the payee)

## 3.4 MSc. Nursing

### 3.4.1 Duration: 2 years

### 3.4.2 Scope for the Post Graduates

Many exciting and rewarding opportunities exist for nursing professionals. They can specialize in areas such as paediatrics, OBG, mental health, medical-surgical nursing and community health nursing.

With advanced education, they can become independent clinical specialists like nurse midwives or nurse practitioners. Nursing administration, nursing education and nursing research are the areas where nurses with Masters in nursing are having very attractive positions.

There is further scope for higher education and research for PGs. After MSc. nursing one can attain M. Phil and Doctorate in Nursing.

PGs have choices beyond hospital Nursing. They can be:

- **Managers**
- **Executives**
- **Entrepreneurs**
- **Government officials**
- **Educators**
- **Researchers**

### 3.4.3 Field of specialization & No. of seats

1. *MSc. Medical Surgical Nursing - 5 seats*
2. *MSc. Obstetrics & Gynaecology Nursing - 5 seats*
3. *MSc. Child Health (Paediatric) Nursing - 5 seats*
4. *MSc. Psychiatric (Mental Health) Nursing - 5 seats*
5. *MSc. Community Health Nursing - 5 seats*

### 3.4.4 Eligibility Criteria for Admission in MSc. Nursing

1. The minimum educational requirements shall be the passing of BSc. Nursing / BSc. Hons. Nursing/Post Basic BSc. Nursing with minimum of 55% marks in aggregate. 5% relaxation of marks for SC/ST/OBC candidates will be given.
2. The candidate should have undergone BSc.Nursing / BSc. Hons. Nursing / Post Basic BSc. Nursing in an institution which is recognized by Indian Nursing Council.
3. The candidate should be a Registered Nurse and Registered Midwife or equivalent with any State Nursing Registration Council.
4. BSc. Nursing graduate should have minimum one year of experience in a hospital or in a College or in a School of Nursing or in Community Health Program after registration in State Nursing Council on the day of admission.
5. Post Basic BSc. Nursing graduate should have minimum one year of work experience prior or after in a hospital or in a College or in a School of Nursing or in Community Health Program after registration in State Nursing Council on the day of admission.
6. The candidate registered as “Registered Nurse” (& not Midwife) will not be eligible for specialization in “Obstetrics & Gynaecology Nursing”
7. Candidate shall be medically fit. The candidate, selected for admission in MSc. Nursing course shall have to submit a medical fitness certificate from a physician during the admission.
8. Candidates who have obtained degree qualification of distance mode will submit NOC from INC during admission.
9. The following criteria will be applied to foreign students seeking admission to MSc. Nursing course:
  - 9.1 Equivalency of the degree of the candidate is to be recognized/ validated by Indian Nursing Council
  - 9.2 The candidates must have no objection certificates from the Ministry of External Affairs, Govt. of India and Ministry of Health & Family Welfare, Govt. of India.



### 3.4.5 Documents required for Counselling and Admission in MSc. Nursing Programme

Following documents in original & two sets of attested photocopies are required at the time of counselling/admission:

1. Mark cards from 1st to Final year of BSc. Nursing / BSc. Hons. Nursing/Post Basic BSc. Nursing
2. All Mark cards of GNM in case of PBBSc Nursing
3. Certificate of Registration as Registered Nurse and Registered Midwife or equivalent
4. Degree Certificate of BSc. Nursing / BSc. Hons. Nursing/Post Basic BSc. Nursing
5. Experience certificate issued by competent Authority
6. NOC of employer to be obtained on the office letter head for in-service candidates
7. Mark sheet of class X & XII
8. Proof of age/date of birth (10th standard certificate/birth certificate)
9. Migration certificate
10. Transfer certificate
11. Character certificate
12. Six copies of recent passport size photograph
13. SC/ST/OBC certificate for claiming relaxation of 5% marks in eligibility
14. Domicile / PRC Certificate (for North East category)
15. AADHAAR Card ( candidate) and PAN card ( of the payee)
16. Medical fitness certificate
17. Foreign students in addition to above require to submit
  - 17.1 Letter of equivalency of the degree by Indian Nursing Council
  - 17.2 No objection certificate from the Ministry of External Affairs, Govt. of India and Ministry of Health & Family Welfare, Govt. of India. All B Sc & M Sc applicants are advised to keep a photocopy of filled application form.

**Note:**

**Only female candidates are eligible for admission. Staying in hostel is mandatory as per Indian Nursing Council.**

## 3.5 Important Dates

### BSc. Nursing

- **Admission** : **Open for admission**
- **Classes to commence** : **1<sup>st</sup> August, 2018**

### MSc. Nursing

- **Last date for receipt of duly filled application form: July 31**
- **Counseling/admission: August 13 &14**

- **Commencement of classes: 1<sup>st</sup> September 2018**

## 3.6 Admission Procedure

### BSc. Nursing

- Admissions will be done on the basis of marks obtained in 10+ 2 qualifying examination.
- The physical presence of the candidate With parents during admission is mandatory.
- Eligible candidate can take direct admission without any entrance examination.

### MSc. Nursing

- Admissions will be based on the inter-se merit of the candidates on the basis of percentage of aggregate marks secured in BSc Nursing/ PBBSc Nursing
- During counselling eligible candidates will be allotted specialization of nursing according to their rank and number of seats available. The choice of specialization made by the candidate during counselling will be final and cannot be altered later.
- The physical presence of candidate at the time of counselling/admission is mandatory



## 3.7 Submission of Application Form

- Candidate can apply online: The online application feature is available 24/7 and is two- step process :
- First purchase application form by paying Rs. 800/- online and on successful payment candidate will be provided with application number and password
- Then sign in using the application number and provided password to file online application
- While applying candidate need to keep ready scanned photo and signature to upload (.jpg format only with maximum file size 200KB, 200 px x 200 px)

**OR**

Candidate can apply offline by dispatching completed application form along with the attested copies of necessary documents to the Admission Officer at the following address. However, the admission of the candidate will depend on the availability of seats at the time of enrolment.

**Admission Officer**

**Sikkim Manipal University**

**5th Mile, Tadong, Gangtok - 737102, Sikkim**

**Admission Officer- 03592-270389**

(Before filling the application form refer guidelines given under Section 8 of the Prospectus)



## 3.8 Fee structure and mode of payment

For details refer Section 7 of the prospectus. Payment in cash will not be accepted.

## 3.9 Facilities in the campus

Refer information provided under Section 2.6 / visit website: [www.smcon.smu.edu.in](http://www.smcon.smu.edu.in)

## 3.10 Address for correspondence for all other queries

### *Principal*

*Sikkim Manipal College of Nursing  
5th Mile, Tadong, Gangtok-737102, Sikkim  
Phone No. 03592-232263, 9474356138  
(Available from 9 AM -5 PM on working days)*



# Sikkim Manipal College of Physiotherapy

(A constituent College of Sikkim Manipal University)

**Bachelor of Physiotherapy**  
**Master of Physiotherapy**

5<sup>th</sup> Mile, Tadong, Gangtok-737102

Website: [www.smcpt.smu.edu.in](http://www.smcpt.smu.edu.in)

E-mail: [principal.physiotherapy@smu.edu.in](mailto:principal.physiotherapy@smu.edu.in)/[hod.smcpt@gmail.com](mailto:hod.smcpt@gmail.com),  
[admission\\_smu@smu.edu.in](mailto:admission_smu@smu.edu.in)

Admission Cell : 03592 270389

College : EPABX: 03592- 231807,270534,Extn-254,138

Mobile : 9932470754

[www.smcpt.smu.edu.in](http://www.smcpt.smu.edu.in)





# 4 Sikkim Manipal College of Physiotherapy

## 4.1 Courses Offered & Objectives

### ***Vision***

Sikkim Manipal College of Physiotherapy (SMCPT) at SMU aims to emerge as a global leader in physiotherapy education, imparting quality evidence based health care and achieve excellence in integration of physiotherapy at all the levels of health care delivery

### ***Programme Objective***

- By the end of this programme, the graduate will be able to identify movement dysfunction using clinical reasoning skills and manage them through evidence based intervention
- Graduates will be able to pursue their career as qualified physiotherapy consultants, academicians, researchers at scientific and policy framing levels
- Graduates will be able to engage with other members of health care team to alleviate the clients dysfunction
- Graduates will continue to upgrade themselves with continuing education and professional development

### **4.1.1 Bachelor of Physiotherapy (BPT)**

The Bachelor of Physiotherapy program offered at SMCPT is of four academic years followed by a six month internship program. In the first two years, students have didactic lectures including the basic medical sciences, exercise therapy (regarding handling, positioning, the principles of various techniques used) and electro therapeutic modalities including the basic concepts of biophysics. The students are also posted for observational training. During the third and fourth year, students are exposed to clinical postings which include outpatients and in-patients of the orthopaedics, neurological, cardiopulmonary, obstetrics and gynaecology, paediatrics, surgery etc. The students thereby can gain experience in patient care including early intervention, acute care and long term treatment.

### **4.1.2 Master of Physiotherapy (MPT)**

The Master of Physiotherapy program offered at SMCPT is of two academic years. In the first academic year, advances in physiotherapy, research methodology, biostatistics, educational technology are taught. In the second academic year, the candidates will exclusively study their elective subject, students will have to undertake a dissertation topic related to elective subject.

During the course period, students undergo cyclic clinical postings, involve in clinical case discussions, seminar presentations, Journal club, dissertation progression appraisal besides off-campus contact programs in specialized clinical areas and community postings.

The objectives of this post graduate program are:

- To incorporate evidence based and ethical practice in all the areas of physiotherapy care, especially within the area of specialty.
- To acquire skills required to be an effective theoretical & clinical teacher in Physiotherapy.
- To be proficient in research methods and apply these in the pursuance of research in Physiotherapy.
- To learn elements of administration in order to be an effective Physiotherapy administrator.
- To ensure competency for professional autonomy.

## 4.2 Eligibility Criteria

### 4.2.1 Bachelor of Physiotherapy

Must have passed (10+2) or equivalent examination with Physics, Chemistry, Biology & English

- General candidates: Should have secured a minimum of 50% aggregate marks( in PCB) and minimum of 50 % marks in English separately from recognized Board/ University
- SC/ST/OBC: Should have secured a minimum of 45% aggregate marks (in PCB) and minimum of 45% marks in English separately from recognized Board/University

### 4.2.2 Master of Physiotherapy

- Must have passed Bachelor of Physiotherapy examination from full time, in-campus BPT course program from an institution/university duly recognized by the Indian Association of Physiotherapists.
- Should have secured a minimum of 55% of marks in aggregate for all candidates.
- Candidates who are presently doing their BPT internship is also eligible to apply, but their admission to the course program is subject to their internship completion on or before 4<sup>th</sup> of August 2018.



### Important Note

Candidates applying from abroad are requested to send an application along with demand draft of US \$50 in favor of Sikkim Manipal University, payable at Gangtok. In addition, all parents/guardians of NRI/NRI sponsored candidates must produce a bank guarantee for tuition fees for the first year duration of course at the time of admission. In case bank guarantee cannot be produced at the time of admission, the admission will be provisional. The said bank guarantee will have to be produced within one month from the date of admission failing which admission will be cancelled.

## 4.3 Categories

Kindly refer the seat matrix 6.4, page no.80.

## 4.4 Admission Procedure

### 4.4.1 BPT

Admission will be on the basis of marks obtained in 10+2 (or equivalent) qualifying examination.

### 4.4.2 MPT

Admission will be based on the inter-se merit of the candidates on the basis percentage of aggregate marks secured in BPT examinations. If two or more candidates secured same in the percentage aggregate marks in BPT examinations, then the date of birth of the candidate will be considered & senior in age will be preferred.

## 4.5 Documents required for Admission of BPT

The following documents in original & two sets of attested photocopies are required at the time of admission:

Mark sheet of class X & XII

Proof of age/date of birth (10<sup>th</sup> standard certificate/birth certificate)

Migration certificate

Transfer certificate

Character certificate

AADHAAR Card (candidate) and PAN card (of the payee)

Six copies of recent passport size photograph

SC/ST/OBC/MBC certificate

Domicile / PRC Certificate (for North East category)

## 4.6 Documents required for counselling & Admission of MPT

Admission is strictly based on the basis of percentage of aggregate marks secured in BPT examinations. If two or more candidates secured same in the percentage aggregate marks in BPT examinations, then the date of birth of the candidate will be considered & senior in age will be preferred.

During counselling session, the candidate shall choose the subject specialty as per their order in the merit list .Candidates called for counselling must produce the following original documents.

Proof of Date of Birth.

BPT Mark Sheets.

Transfer Certificate.

Migration Certificate.

Character Certificate

AADHAAR Card ( candidate) and PAN card ( of the payee)

Four recent, identical passport size photographs and four stamp size photographs.

Documents as required for admission in Sikkim, North East and NRI categories.

*NOTE: All applicants are advised to keep a photocopy of filled up application form*

## 4.7 Schedule for Admission

### BPT

Admission : Open for direct admission

Commencement of classes : August 01, 2018

### MPT

Counselling/Admission : July 02

Commencement of classes : August 06, 2018

## 4.8 Submission of Application Forms

Instructions should be read very carefully before filling the application form. Completed application form along with the copies of necessary documents in support of claim in any reserved category should be dispatched to the admission officer. The detail of address is:

**Admission Officer,**

**Sikkim Manipal University**

**5<sup>th</sup> Mile, Tadong,**

**Gangtok 737102**

**Address for correspondence for all other queries:**

Principal, Sikkim Manipal College of Physiotherapy

5<sup>th</sup> Mile, Tadong, Gangtok 737102, Sikkim

Email: principal.physiotherapy@smu.edu.in,hod.smcpt@gmail.com

Tel: 03592231807, 9932470754

## 4.9 Fee Structure

For details, refer **section 7** of the prospectus. **Payment in cash is not accepted**

## 4.10 Facilities in the Campus

For details, refer information provided under **section 2.6**



# University Departments

**Department of Humanities & Social Sciences**

**Department of Hospital Administration**

**Department of Medical Biotechnology**

*Admission Officer  
Sikkim Manipal University  
5<sup>th</sup> Mile, Tadong,  
Gangtok 737102*

## 5.1 Department of Humanities & Social Sciences

The department was established in 2012 and offers Bachelor of Arts (English and Sociology Hons.), Bachelor of Commerce (BCom) and Master of Commerce (MCom)

### 5.1.1 Strength of the Department

*Highly qualified faculty members*

*Well-equipped state of the art computer lab*

*Located in a serene environment*

*Excellent Placement support*

*A strong Alumni network*

*Well-equipped projector based class rooms*

### 5.1.2 Programmes & Eligibility Criteria

#### Courses and Objectives

##### Bachelor of Arts (English and Sociology Hons.) (Three years)

To give students multidisciplinary academic foundation with the sound knowledge of English, Political Science, Sociology and History.

Skills acquired during the course of the degree (such as critical thinking, clarity of expression in written and oral forms, self-management and planning, independent research, organization of time, cooperation with others, attention to detail, and ability to grasp the larger picture) will be invaluable regardless of one's chosen career path.

To offer students wide knowledge in the humanities and Social Sciences that is fairly sufficient to expose them to numerous job opportunities.

##### Bachelor of Commerce (B. Com) (Three years)

B. Com degree holders will be able to pursue higher education and opt for masters (M. Com) or professional courses like Masters in Business Administration (MBA), Chartered Accountant (CA), Company Secretary (CS), Cost and Management Accounting (CMA) and others.

B. Com degree holders will have overall knowledge about the working of a business organization and accounting for different functions of an organization.

B. Com degree holders will have knowledge about the banking sector, economic sector, financial sector, legal sector concerning a business, taxation sector, monetary sector and other quantitative analysis sector concerning the use of mathematics and statistics in solving various business problems.

## Master of Commerce (M. Com) (Two years)

M.Com degree holders will be able to serve in banking sector and will have the knowledge of the different policies and working of banks.

M.Com degree holders will have the specific knowledge about accounting, financial sector and other activities of a business organisation and can hold important positions in them.

M.Com degree holders will have knowledge about the different aspects of stock markets, financial institutions, and international trade and investment issues and can hold various positions in international and multinational corporations.

M.Com degree holders can undertake research activities in various organisations and universities.

## 5.1.3 Eligibility Criteria

### B.A/ B.Com

A candidate must have passed 10+2 or equivalent examination in any stream with minimum 50% (45% for SC/ST/OBC) marks in aggregate from recognized Board/ University.

**Note:** Candidates appearing in 10+2 or equivalent examinations are also eligible to apply on provisional basis.

Only fresh passed out students are allowed to apply for admission into the courses; candidates having a break of study for more than one year after 10+2 shall not be entertained for admission.



## M. Com

A candidate must have passed bachelor of Commerce or equivalent with minimum 50% of marks (45% in case of SC/ST/OBC)

### 5.1.4 Admission Procedure

#### B.A/B.Com

Marks obtained in the Best 5 subjects in the last plus 12 examination will be taken into consideration except Physical Education Marks for preparing the merit list.

#### M.Com

A Merit list will be prepared based on marks scored in the last university examination.





## 5.2 Department of Hospital Administration

The department was established in the academic year 2008-2009 and offers Masters in Hospital Administration (MHA)

### 5.2.1 Strength of the Department

*Highly qualified faculty members*

*Attached to 500 bedded Central Referral Hospital – gives students the opportunity to learn the functioning of the hospital and acquire problem solving skills.*

*Industrial interaction - Major project, minor project, internship, industrial collaboration.*

*Excellent Placement*

*A strong Alumni network.*

### 5.2.2 Student Activity

#### **Societal responsibility**

Awareness programs under the banner of SWACH BHARAT are conducted in the nearby area.

#### **State Hospital Visits**

Students visit the Primary Health Centre and the District Hospital for the better understanding of the various types of hospitals.

### 5.2.3 Programs and Eligibility Criteria

#### **MHA Programme**

#### **Eligibility:**

Bachelor's degree with 50% marks in aggregate for general (45% marks in aggregate for



North Eastern States, ST, SC and OBC) preferably with one year work experience in Hospital/Health System Management.

**Number of seats:**

- Maximum 15 seats

**NOTE**

*Applicants seeking admission under Sikkim Category (only for candidates from Sikkim) should contact: The Director of Technical Education, HRD Department, Govt of Sikkim, Gangtok.*



## 5.3 Department of Medical Biotechnology

The department was established in the academic year 2008-2009 and offers Integrated M.Sc. in Medical Biotechnology (Five years).

### 5.3.1 Strength of the Department

Highly qualified faculty members.

Attached to 500 bedded Central Referral Hospital – gives students the opportunity to undertake research problems in different fields of medical sciences.

Research Centers / Industrial interaction – opportunity for internship, research collaboration.

Placement opportunity.

A strong Alumni network.

### 5.3.2 Student Activity

Students attend workshop / seminar / invited lecture arranged by the Department.

Students visit Pharmaceuticals / Biotech Companies for better understanding of biotech related problems / research.

Societal responsibility – Students conduct awareness program under the banner of SWACH BHARAT in nearby areas.

### 5.3.3 Programs and Eligibility Criteria

#### *Integrated M.Sc. in Medical Biotechnology (Five years)*

Objective of the course is to impart expertise to the students and to enable them to join the main stream of medical biotechnology based teaching and research activities.

#### **Eligibility:**

The student must have passed (10+2) or equivalent examination with Physics, Chemistry, Biology / Biotechnology with minimum 50% aggregate marks (45% marks for SC / ST / OBC category).



# 6 Seat Matrix of Courses under SMU

## 6.1 Seat Matrix of B. Tech courses

Sl No.	Branch	Based on All India JEE (Main)Score						MAHE-OET#/SMIT OFFLINE TEST*
		General	North East	GTA!	Defence	PMF+	Sikkim	
<b>B. Tech Courses</b>								
1.	Computer Science. & Engineering	18	12	3	2	2	36	107
2.	Electronics & Communication	18	12	3	2	2	36	107
3.	Electrical & Electronics	8	6	2	1	1	18	54
4.	Information Technology	8	6	2	1	1	18	54
5.	Mechanical Engineering	12	8	2	1	1	24	72
6.	Civil Engineering	12	8	2	1	1	24	72

# Entrance Test conducted by MAHE Manipal, Manipal (Karnataka)

\* SMIT Offline Test conducted by SMU

! Gorkha Territorial Administration

• Paramilitary Force

- ◆ Tuition Fee Waiver Scheme: As per AICTE guidelines, under this scheme upto 5% of the sanctioned intake is eligible for tuition fee waiver. This is supernumerary in nature.
- ◆ 15% seats (supernumerary) of the sanctioned intake in each branch are for PIO/ Foreign Nationals/ Children of Indian Workers in Gulf Countries.
- ◆ 15% seats (within the sanctioned intake) in each engineering branch is allotted to NRI / NRI sponsored candidates.



## 6.2 Seat Matrix of MSc.& Humanities courses

SI No	Course	General	Sikkim	Total
<b>Basic Sciences Courses</b>				
1.	Master of Science (M Sc in Mathematics)	16	4	20
2.	Master of Science (M Sc in Physics)	16	4	20
3.	Master of Science (M Sc in Chemistry)	16	4	20
<b>Humanities &amp; Social Sciences Courses</b>				
1.	Master of Commerce (M Com)	32	8	40
2.	Bachelor of Commerce (B Com)	24	6	30
3.	Bachelor of Arts (B A)	16	4	20

## 6.3 Seat Matrix of Medical Courses

SI No	Course/ Category	General	North East	Defence	Sikkim Govt	Management	Total
1.	MBBS*	14	10	1	17**	8	50
2.	MD/MS#	11	NIL	NIL	8***	3	22
3.	Integrated M Sc Medical Biotechnology	16	NIL	NIL	4	NIL	20

### Note:

Number of seats may vary from categories and in total.

Please refer [www.smu.edu.in](http://www.smu.edu.in) for any variation in number of seats.

\*The total number of seats may be 100 depending on final outcome by the Hon'ble Supreme court of India & MCI.

\*\*20% concessional and 15% with full course fees.

# Seats in Medicine, Pediatrics, ENT, Psychiatry & Physiology are subject to recognition by the MCI.

\*\*\* For in service doctors, nominated by Department of Healthcare, Health Services & Family Welfare, Govt. of Sikkim.

## 6.4 Seat Matrix of Nursing, Physiotherapy & Hospital Administration Courses

Nursing Courses							
Sl. No.	Course	General	North East	Defence	Sikkim Govt.	NRI/NRI sponsored	Total
1.	B Sc Nursing	34	30	1	20	15	100
2.	M Sc Nursing	8	8	NIL	5	4	25

Physiotherapy Courses							
Courses	Sikkim Govt.	General	North East	Defence	NRI / NRI Sponsored	For Students Manipal	SMU
BPT	8	15	10	2	5	NIL	NIL
MPT with Specialty**	2	6	NIL	1 (alternating with SMU category)	1	2	1 (alternating with Defence category)

### \*\* MPT with Specialty

1. MPT Orthopedics: Manual Therapy & Sports Physiotherapy.
2. MPT Neurological Sciences: Adult & Paediatrics Physiotherapy.
3. MPT Cardiopulmonary Sciences: Cardiopulmonary Rehabilitation & ICU Management.
4. MPT in Health Promotion & Disability Rehabilitation: Geriatrics, Women's health & Ergonomics.

Hospital Administration Course							
Sl. No.	Course	General	North East	Defence	Sikkim Govt.	NRI/NRI sponsored	Total
1.	Master in Hospital Administration (MHA)	8	3	1	3	NIL	15



## 6.5 Seat Matrix of MBA & BBA

Sl No	Course	General	North East	Defence	Sikkim	Total
<b>Business Administration Courses</b>						
1.	Master of Business Administration (MBA)	35	12	1	12	60
2.	Bachelor of Business Administration (BBA)	35	12	1	12	60
<b>Computer Application Courses</b>						
1.	Master of Computer Applications (MCA)	17	6	1	6	30
2.	Bachelor of Computer Applications (BCA)	35	12	1	12	60
<b>Information Technology Courses</b>						
1.	M Sc IT	11	4	1	4	20
2.	B Sc IT	11	4	1	4	20

## 6.6 Seat Matrix of Lateral Entry Scheme in B. Tech & M. Tech Courses

Sl No	Branch	General	Sikkim	Total
<b>Lateral Entry in B. Tech Courses</b>				
1.	Computer Science & Engineering	29	7	36
2.	Electronics & Communication Engineering	29	7	36
3.	Electrical & Electronics Engineering	14	4	18
4.	Information Technology	14	4	18
5.	Mechanical Engineering	19	5	24
6.	Civil Engineering	19	5	24
<b>M. Tech Courses</b>				
1.	Computer Science & Engineering	14	4	18
2.	Digital Electronics & Communication Engineering	14	4	18
3.	Power Electronics	14	4	18
4.	Information Technology	14	4	18
5.	Production Engineering	14	4	18
6.	Structural Engineering	14	4	18

# 7 Course & Hostel Fees and Refund Rules

## 7.1 Course Fees & Hostel Fees

### Course Fees

Sl. No.	Course	Course Duration	FIRST YEAR FEE				SECOND YEAR ONWARDS					
			Course Fee	Registration Fees	Caution Deposit	Examination Fees	TOTAL FEE		TOTAL FEE			
							Annual Lump Sum	IN INSTALLMENTS 1st Inst.	2nd Inst.	Annual Lump Sum	IN INSTALLMENTS 1st Inst.	2nd Inst.
<b>GENERAL (GEN), NORTH EAST INCLUDING SIKKIM (NE), DEFENCE (DEF) &amp; DGHC CATEGORY</b>												
1	B Tech - Computer Science	4 Yrs	2,62,000	1,000	5,000	3,000	2,71,000	1,40,900	1,40,900	2,65,000	1,37,800	1,37,800
2	B Tech - Other than Computer Science	4 Yrs	2,37,000	1,000	5,000	3,000	2,46,000	1,27,900	1,27,900	2,40,000	1,24,800	1,24,800
3	B Tech (Lateral Entry to 2nd Year)- Computer Science	3 Yrs	2,62,000	1,000	5,000	3,000	2,71,000	1,40,900	1,40,900	2,65,000	1,37,800	1,37,800
4	B Tech (Lateral Entry to 2nd Year)- Other than Computer Science	3 Yrs	2,37,000	1,000	5,000	3,000	2,46,000	1,27,900	1,27,900	2,40,000	1,24,800	1,24,800
5	BCA	3 Yrs	87,000	1,000	5,000	3,000	96,000	49,900	49,900	90,000	46,800	46,800
6	BSC - Information Technology	3 Yrs	87,000	1,000	5,000	3,000	96,000	49,900	49,900	90,000	46,800	46,800
7	BBA	3 Yrs	1,17,200	1,000	5,000	3,000	1,26,200	65,600	65,600	1,20,200	62,500	62,500
8	B. A. / B. Com.	3 Yrs	47,000	1,000	2,000	3,000	53,000	27,550	27,550	50,000	26,000	26,000
9	M Tech	2 Yrs	1,48,000	1,000	5,000	6,000	1,60,000	83,200	83,200	1,54,000	80,100	80,100
10	MCA	3 Yrs	1,37,400	1,000	5,000	3,000	1,46,400	76,150	76,150	1,40,400	73,000	73,000
11	MCA(Lateral Entry to 2nd Year)	2 Yrs	1,37,400	1,000	5,000	3,000	1,46,400	76,150	76,150	1,40,400	73,000	73,000
12	MBA	2 Yrs	2,59,000	1,000	5,000	6,000	2,71,000	1,40,900	1,40,900	2,65,000	1,37,800	1,37,800
13	MSC - Information Technology	2 Yrs	1,37,400	1,000	5,000	3,000	1,46,400	76,150	76,150	1,40,400	73,000	73,000
14	MSC in Mathematics	2 Yrs	83,700	1,000	5,000	6,000	95,700	49,750	49,750	89,700	46,650	46,650
15	MSC in Physics/Chemistry	2 Yrs	83,700	1,000	5,000	6,000	95,700	49,750	49,750	89,700	46,650	46,650
16	M. A. / M. Com.	2 Yrs	54,000	1,000	2,000	6,000	63,000	32,750	32,750	60,000	31,200	31,200
<b>SIKKIM QUOTA: 20% OF THE SEATS ARE RESERVED FOR CANDIDATES SELECTED BY GOVERNMENT OF SIKKIM, WITH CONCESSION OF 75% OF THE TUITION FEE. THE FEE STRUCTURE AFTER THE CONCESSION OF SIKKIM QUOTA ARE AS FOLLOWS.</b>												
1	B Tech - Computer Science	4 Yrs	1,49,500	1,000	5,000	3,000	1,58,500	82,400	82,400	1,52,500	79,300	79,300
2	B Tech - Other than Computer Science	4 Yrs	1,33,500	1,000	5,000	3,000	1,42,500	74,100	74,100	1,36,500	71,000	71,000
3	B Tech (Lateral Entry to 2nd Year)- Computer Science	3 Yrs	1,49,500	1,000	5,000	3,000	1,58,500	82,400	82,400	1,52,500	79,300	79,300
4	B Tech (Lateral Entry to 2nd Year)- Other than Computer Science	3 Yrs	1,33,500	1,000	5,000	3,000	1,42,500	74,100	74,100	1,36,500	71,000	71,000
5	BCA	3 Yrs	49,500	1,000	5,000	3,000	58,500	30,400	30,400	52,500	27,300	27,300
6	BSC - Information Technology	3 Yrs	49,500	1,000	5,000	3,000	58,500	30,400	30,400	52,500	27,300	27,300
7	BBA	3 Yrs	53,300	1,000	5,000	3,000	62,300	32,400	32,400	56,300	29,300	29,300
8	B. A. / B. Com.	3 Yrs	19,850	1,000	2,000	3,000	25,850	13,425	13,425	22,850	11,875	11,875
9	M Tech	2 Yrs	84,000	1,000	5,000	6,000	96,000	49,900	49,900	90,000	46,800	46,800
10	MCA	3 Yrs	70,600	1,000	5,000	3,000	79,600	41,400	41,400	73,600	38,250	38,250
11	MCA(Lateral Entry to 2nd Year)	2 Yrs	70,600	1,000	5,000	3,000	79,600	41,400	41,400	73,600	38,250	38,250
12	MBA	2 Yrs	95,700	1,000	5,000	6,000	1,07,700	56,000	56,000	1,01,700	52,900	52,900
13	MSC - Information Technology	2 Yrs	70,600	1,000	5,000	3,000	79,600	41,400	41,400	73,600	38,250	38,250
14	MSC in Mathematics	2 Yrs	29,835	1,000	5,000	6,000	41,835	21,768	21,768	35,835	18,618	18,618
15	MSC in Physics/Chemistry	2 Yrs	42,200	1,000	5,000	6,000	54,200	28,200	28,200	48,200	25,050	25,050
16	M. A. / M. Com.	2 Yrs	21,650	1,000	2,000	6,000	30,650	15,925	15,925	27,650	14,375	14,375



**FEE STRUCTURE FOR ADMISSION OF 2018 BATCH FOR MEDICAL, NURSING, PHYSIOTHERAPY AND PARA-MEDICAL COURSES (Amount in Rupees)**

Sl. No.	Course	Course Duration	FIRST YEAR				SECOND YEAR ONWARDS				
			Course Fee	Registration Fees	Caution Deposit	Annual Lump Sum	TOTAL FEE		Annual Lump Sum	TOTAL FEE	
							1st Installment	2nd Installment		1st Installment	2nd Installment
<b>GENERAL (GEN), NORTH EAST (NE), DEFENCE (DEF) &amp; DGHC CATEGORY</b>											
1	MBBS	4.5 Yrs	13,47,800	1,000	10,000	13,58,800	7,06,600	7,06,600	13,47,800	7,00,850	7,00,850
2	BSC NURSING	4 Yrs	1,15,560	1,000	5,000	1,21,560	63,230	63,230	1,15,560	60,080	60,080
3	BPT	4 Yrs	1,23,050	1,000	5,000	1,29,050	67,125	67,125	1,23,050	63,975	63,975
4	Master in Hospital Administration	2 Yrs	1,53,000	1,000	5,000	1,59,000	82,700	82,700	1,53,000	79,550	79,550
5	MPT	2 Yrs	2,10,000	1,000	5,000	2,16,000	1,12,300	1,12,300	2,10,000	1,09,200	1,09,200
6	MSC - Nursing	2 Yrs	1,18,000	1,000	5,000	1,24,000	64,500	64,500	1,18,000	61,350	61,350
7	Integrated MSC in Bio-Technology	5 Yrs	1,16,000	1,000	5,000	1,22,000	63,450	63,450	1,16,000	60,300	60,300
8	MD/MS: Paediatrics/ General Medicine/ OBG	3 Yrs	26,48,450	1,000	10,000	26,59,450	13,82,925	13,82,925	26,48,450	13,77,175	13,77,175
9	MD/MS: ENT/Psychiatric	3 Yrs	18,02,950	1,000	10,000	18,13,950	9,43,275	9,43,275	18,02,950	9,37,525	9,37,525
10	MD: Microbiology	3 Yrs	9,74,000	1,000	10,000	9,85,000	5,12,200	5,12,200	9,74,000	5,06,500	5,06,500
11	MD: Bio Chemistry/Community Medicine/ Pharmacology/ Physiology	3 Yrs	8,47,000	1,000	10,000	8,58,000	4,46,150	4,46,150	8,47,000	4,40,450	4,40,450
<b>SIKKIM QUOTA: 20% OF THE SEATS ARE RESERVED FOR CANDIDATES SELECTED BY GOVERNMENT OF SIKKIM, WITH CONCESSION OF 75% OF THE TUTION FEE. THE FEE STRUCTURE AFTER THE CONCESSION OF SIKKIM QUOTA ARE AS FOLLOWS.</b>											
1	MBBS	4.5 Yrs	5,62,465	1,000	10,000	5,73,465	2,98,183	2,98,183	5,62,465	2,92,483	2,92,483
2	BSC NURSING	4 Yrs	65,271	1,000	5,000	71,271	37,086	37,086	65,271	33,936	33,936
3	BPT	4 Yrs	74,365	1,000	5,000	80,365	41,783	41,783	74,365	38,683	38,683
4	Master in Hospital Administration	2 Yrs	61,100	1,000	5,000	67,100	34,900	34,900	61,100	31,750	31,750
5	MPT	2 Yrs	94,500	1,000	5,000	1,00,500	52,250	52,250	94,500	49,150	49,150
6	MSC - Nursing	2 Yrs	64,800	1,000	5,000	70,800	36,800	36,800	64,800	33,700	33,700
7	Integrated MSC in Bio-Technology	5 Yrs	63,000	1,000	5,000	69,000	35,900	35,900	63,000	32,750	32,750
8	MD/MS: Paediatrics/ General Medicine/ OBG	3 Yrs	10,13,500	1,000	10,000	10,24,500	5,32,750	5,32,750	10,13,500	5,27,000	5,27,000
9	MD/MS: ENT/Psychiatric	3 Yrs	8,35,572	1,000	10,000	8,46,572	4,40,236	4,40,236	8,35,572	4,34,486	4,34,486
10	MD: Microbiology	3 Yrs	4,53,000	1,000	10,000	4,64,000	2,41,300	2,41,300	4,53,000	2,35,550	2,35,550
11	MD: Bio Chemistry/Community Medicine/ Pharmacology/ Physiology	3 Yrs	3,94,000	1,000	10,000	4,05,000	2,10,600	2,10,600	3,94,000	2,04,900	2,04,900
<b>MANAGEMENT CATEGORY</b>											
1	MBBS	4.5 Yrs	26,50,750	1,000	10,000	26,61,750	13,84,125	13,84,125	26,50,750	13,78,375	13,78,375
2	MD/MS: Paediatrics/ General Medicine/ OBG	3 Yrs	41,74,500	1,000	10,000	41,85,500	21,76,450	21,76,450	41,74,500	21,70,750	21,70,750
3	MD/MS: ENT/Psychiatric	3 Yrs	38,26,900	1,000	10,000	38,37,900	19,90,000	19,90,000	38,26,900	19,90,050	19,90,050
4	MD: Microbiology/ Bio Chemistry/Community Medicine/ Pharmacology/ Physiology	3 Yrs	18,15,000	1,000	10,000	18,26,000	9,43,800	9,43,800	18,15,000	9,43,800	9,43,800

**NOTE: FEES ARE PAYABLE ON ANNUAL/HALF YEARLY BASIS, IRRESPECTIVE OF THE DURATION OF SEMESTERS/ACADEMIC YEAR.**

# Hostel and Mess Fees

## FEE STRUCTURE FOR ADMISSION OF 2018 BATCH FOR NRI/FOREIGN CATEGORY (in US Dollar)

Sl. No.	COURSE	Course Duration	Total Course Fees	FIRST YEAR			3RD YEAR	4TH YEAR
				Course Fees	Registration Fees	Total Fees		
1	B. Tech	4 Yrs	\$ 26,100	\$ 6500	\$ 100	\$ 6,600	\$ 6500	\$ 6500

Note: In addition Caution Deposit of Rs. 5,000/- is required at the time of admission.

## HOSTEL FACILITIES AND 'MESS & UTILITY' ADVANCES ( Amount in Rupees )

Sl. No.	Location of Hostel	Double Sharing		Triple Sharing		Total
		Annual Hostel Facilities	Annual Mess and Utility	Annual Hostel Facilities	Annual Mess and Utility	
1	SMIT, Mazitar Campus	38,500	77,000	83,000	1,15,500	1,35,800
2	SMIMS, Tadong Campus	52,800	83,000	35,200	83,000	1,18,200

### Note:

- 1 Double sharing rooms at SMIMS, Tadong Campus shall be allotted subject to availability.
- 2 Mess and Utility Advance may vary from time to time, subject to increase of more student facilities/services and change in daily messing rate as per the prevailing market rate of relative commodities & electricity tariff.
- 3 The utility and facilities charges shall be charged at actual on monthly basis, which shall be adjusted against the advance.

## 7.2 Withdrawal & Refund Rules

### 7.2.1 Withdrawal & Refund - SMIT Campus

SMIT follows the withdrawal and refund policy as per AICTE/UGC guidelines.

### 7.2.2 Withdrawal & Refund - Medical Campus

*Applicable to MBBS, MD/MS & Other Courses*

If a student chooses to withdraw from the program of study in which he/she is enrolled, the refund will be as per the following system:

- 1. 10% of processing fee will be deducted on total annual fee\* of 1<sup>st</sup> year from 1<sup>st</sup> Round of counselling to Mop up round.**
- 2. Subsequently any withdrawal after Mop up round to last date upto which students can be admitted against vacancies arising due to any reason by medical institution, 100% fee for 1<sup>st</sup> year which has to be paid will be forfeited.**
- 3. If any withdrawal is done after last date up to which students can be admitted against vacancies arising due to any reason then 100% of tuition fee applicable for remaining course has to be paid.**

**\*Inclusive of course fees and non-tuition fees for the first year but exclusive of caution money.**

**Note:**

*Registration Fee is non-refundable*

*Subject to approval or changes made thereafter by State Government of Sikkim.*



## 8. General Information

### 8.1 Candidate can apply either online or offline

#### A. Online Application

Candidate applying online are required to visit [www.apply.smu.edu.in](http://www.apply.smu.edu.in) for detailed instruction.

#### B. Offline Application

The cost of application form is Rs. 800. There is no extra charge for the prospectus on purchase of the application form.

The application form and prospectus can be freely downloaded from the website. The downloaded form can be filled and posted along with a demand draft of Rs. 800 in favour of 'Sikkim Manipal University' payable at Gangtok.

**Note:**

- a. The list of prospectus distribution center will be displayed on the website.
- b. Use only Black/Blue ball pen to fill up the form.
- c. The application form should be filled neatly. Avoid overwriting.
- d. Individual boxes should contain only a single letter or number.



## 8.2 Instructions for filling application form

### 1. Code of Applied Courses

Course		Code
<b>Technical Courses</b>		
1	B Tech (ECE, CSE, EEE, IT, ME, CE) through JEE & SMIT OFFLINE TEST	101
2	Lateral B Tech (ECE)	102
3	Lateral B Tech (CSE)	103
4	Lateral B Tech (EE)	104
5	Lateral B Tech (IT)	105
6	Lateral B Tech (ME)	106
7	Lateral B Tech (CE)	107
8	BCA	108
9	MCA	109
10	M Tech (Power Electronics)	110
11	M Tech (Computer Science and Engineering)	111
12	M Tech (Information Technology)	112
13	M Tech (Digital Electronics and Communication Engineering)	113
14	M Tech. (Production Engineering)	115
15	M Tech (Structural Engineering)	116
<b>Medical Courses</b>		
16	MBBS	201
17	B Sc (Nursing)	202
18	BPT	203
19	Integrated M Sc Medical Biotechnology	204
20	M Sc (Nursing)	205
21	MPT	206
22	Master in Hospital Administration	207
23	MD/MS	208
<b>Other Courses</b>		
24	BBA	301
25	B Com	302
26	B A	303
27	BSc IT	304
28	MBA	401
29	M Sc (Chemistry)	402
30	M Sc (Mathematics)	403
31	M Sc (Physics)	404
32	M Sc IT	405
33	M Com	406

If candidate wishes to apply for more than one course, then first preference should be written under Code 1, second preference under code 2 and so on. e.g. First preference is B. Tech and second preference is BCA.

Medical				Technical				Others			
CODE 1	CODE 2	CODE 3	CODE 4	CODE 1	CODE 2	CODE 1	CODE 2	CODE 1	CODE 2	CODE 3	CODE 4
				1	0	1	1	0	8		

**2. NAME OF THE APPLICANT:** Write your name in CAPITAL LETTERS as given in Class X marksheet/certificate. Leave one blank box between the adjacent words. If the provided space is not sufficient, then words can be abbreviated. However, first name and surname should not be abbreviated. Do not use any prefixes like Mr., Mrs., Miss/Ms etc. e.g. RAJENDRA KUMAR SINGH should be written as:

R A J E N D R A   K U M A R   S I N G H

**3. DATE OF BIRTH:** Enter the date of birth as illustrated below:

For example: 5<sup>th</sup> June 1999 should be written as:

0 5 0 6 9 9

**4. GENDER:** Tick the appropriate box only

**5. NATIONALITY:** Write your nationality.

**6. CASTE:** Write GEN/SC/ST/OBC/MBC.

**7. CATEGORY:** Specify the category by a tick mark under the appropriate category. Eligible candidates can tick multiple categories.

**8. NAME OF THE ENTRANCE TEST APPEARED/APPEARING:** Tick the appropriate entrance exam.

**9. TEST CENTRE & CODE FOR SMIT OFFLINE TEST (for B. Tech only):**

Select the code of preferred test center.

TEST CENTRE	CODES	TEST CENTRE	CODES
AGARTALA	1	JORHAT	16
BHOPAL	2	KOLKATA	17
BHUBANESHWAR	3	LUCKNOW	18
BOKARO	4	MUMBAI	19
DEHRADUN	5	MUZAFFARPUR	20
DELHI	6	NOIDA	21
DIMAPUR	7	PATNA	22
DURGAPUR	8	PUNE	23
GANGTOK	9	RAIPUR	24
GUWAHATI	10	RANCHI	25
HYDERABAD	11	SHILLONG	26
ITANAGAR	12	SILCHAR	27
JABALPUR	13	SILIGURI	28
JAIGAON	14	VARANASI	29
JAMSHEDPUR	15	VISAKHAPATNAM	30

*In case of cancellation of centre due to unforeseen circumstances, nearby test center will be allotted to the candidates.*

**10. NAME OF THE PARENT/GUARDIAN :** Follow the instruction as given in S. No. 2.

**11. ADDRESS FOR CORRESPONDENCE:** Provide complete postal address with PIN CODE.

**12 & 13. MOBILE NUMBERS:** Provide 10 digit Mobile numbers.

**14 & 15. EMAIL ID:** Email ID to be provided for effective communication

**16. PHOTOGRAPH OF APPLICANT:** Paste recent passport size color photograph.

**17. SIGNATURE OF APPLICANT:** Sign within the box.

**18. DETAILS OF QUALIFYING EXAMINATION:**

**i) Passed/Appearing**

If passed provide the details as per the format given in the application form.

**19. SUBMISSION OF APPLICATION FORM**

Completed application form is to be sent by speed post/courier service at the following address:

a) For Technical/Management/Computer Application/Science Courses:

**Chairman Admission**

**Sikkim Manipal Institute of Technology (SMIT)**

**Majitar, Rangpo, 737 132 (East Sikkim)**

**Mob: 9732947000/9733026159**

b) For Medical/Nursing/Physiotherapy/Humanities/Hospital Administration/Medical Biotechnology Courses:

**Admission Officer (Medical Campus)**

**Sikkim Manipal Institute of Medical Sciences (SMIMS)**

**5th Mile, Tadong, Gangtok, 737 102 (East Sikkim)**

**Ph. No. 03592 - 270389**

## 8.3 Guidelines for Candidates appearing in SMIT OFFLINE TEST (for B. Tech)

### 8.3.1 E-Hall Ticket

Detail information regarding e-hall ticket and booking of test centre will be intimated through e-mail.

### 8.3.2 Examination details

Candidates are required to report at the test centre 30 minutes prior to commencement of the examination. The rules and regulations will be announced by the invigilator at the test centre.

It is an MCQ based entrance test covering 10+2 level Physics, Chemistry, Mathematics and English. There is no negative marking.

The merit list and date of counseling will be published on the website.

### 8.3.3 Counseling/Admission

Counseling letter will be sent to the successful candidate by e-mail.

All the details pertaining to counseling and admission will be given in counseling letter.

***The admission in SMU is purely on the merit basis. There is no donation or capitation fee of any kind. SMU does not appoint any agent to facilitate the admission process. For any clarification contact the Admission Cell.***

## 8.4 Anti Ragging Measures

The University and its constituent colleges adopt zero tolerance towards ragging and follows the direction given by Hon'ble Supreme Court of India in true letter and spirit.

## 8.5 Discipline

SMU is an institution for higher learning and the objective is not only to impart education but also to build up the character of the students making them ideal citizens of the country. The students are, therefore, expected to observe proper discipline in their conduct during the entire period they spend with the university.



## ***Annexure I***

### **Format of Sponsorship Letter for NRI applicants**

I, Mr./Mrs. \_\_\_\_\_(name of sponsor)\_\_\_\_\_ a resident of \_\_\_\_\_(complete address abroad with country of residence)\_\_\_\_\_ hereby sponsor Mr./Ms. (name of candidate)\_\_\_\_\_ who is my \_\_\_\_\_(mention correct relationship)\_\_\_\_\_. I also undertake to bear the cost of total/tuition fees of the candidate for the entire course.

A photocopy of my proof of residence (copy of passport/certificate of residence from appropriate authority in case of citizens of Nepal/Bhutan) is also enclosed.

Signature of the Sponsor

Full Address

## WORD OF CAUTION

The seats for all the courses offered by SMU can be secured only by merit in the qualifying examination/entrance test. SMU has no agents or middlemen for admissions. There is no donation or capitation fee of any kind.

Note: jurisdiction for all disputes (if any) relating to the university is Gangtok

**For authorized information center please visit [www.smu.edu.in](http://www.smu.edu.in)**

## IMPORTANT NOTE

Applicants of SMIT OFFLINE TEST for B Tech, Computer Application Courses, Management Courses and Basic Science Courses need to send the applications to -

**Chairman Admission**

**SMIT, Majitar, Rangpo, East Sikkim - 737 132**

Applicants for MBBS, Nursing, Physiotherapy and Medical Science Courses need to send the applications to -

**Admission Officer (Medical Campus)**

**SMIMS, 5th Mile, Tadong, East Sikkim 737 102**

## NOTE FOR CANDIDATES

Need of providing correct mobile number and e-mail ID of the Candidate and Parents/Guardians.

Need of visiting our website regularly as well as checking their e-mail frequently.

Only receiving the call/counselling letter is not a sufficient condition for admission. Candidate not meeting the eligibility criteria and/or those who have not passed the +2 examination should not proceed for counseling even if counseling letter has been received.



## Getting to Sikkim

SMIT is located at a distance of 4 kms from Rangpo (West Bengal Sikkim Border) and 35 kms short of Gangtok. Rangpo is located at a distance of 72/80 kms from Siliguri/NJP respectively and 80 kms from Bagdogra Airport. SMIMS is located at a distance of 32 kms from Rangpo and 8 kms short of Gangtok. SMU and SMIMS / SMCON / SMCOP are located in the same campus.

### By Train

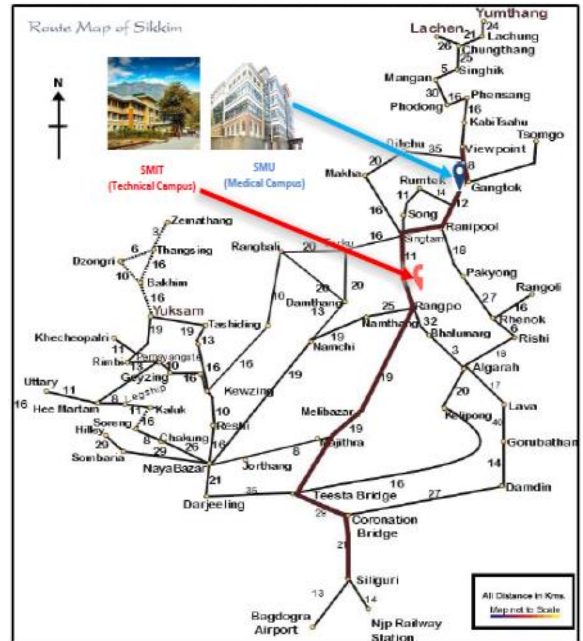
One can travel by train from any part of the country to New Jalpaiguri (NJP) or Siliguri. From here, the journey to the campus, which takes three to four hours, can be made by bus or taxi.

### By Air

Nearest airport Bagdogra is connected with all the major cities. From the airport, one can take a taxi to the campus of SMIT, Majitar and SMIMS, Tadong, Gangtok. The drive takes about three to four hours. One can also use the services of chartered helicopters to travel between Bagdogra and Gangtok.

### By Road

Long distance buses ply from major towns in West Bengal, Bihar and Assam to Siliguri. The journey from Siliguri to the campus can be made by taxi or bus via the Himalayan foothills along the Teesta and Rangit rivers and passing through the towns of Teesta Bazar, Melli and Rangpo.



**SMU** SIKKIM  
MANIPAL  
UNIVERSITY

## Technical Campus

Majitar, Rangpo - 737132, Sikkim, India

E-mail: [admission.smit@smu.edu.in](mailto:admission.smit@smu.edu.in)

Phone No. : 03592 - 246020

Mobile No: +91-9732947000 +91-9635527557

+91-9735110007 +91-9083254144

+91-9083254145 +91-9083254146

## Medical Campus

5th Mile, Tadong, Gangtok - 737102, Sikkim, India

Phone: +91 3592 270389

E-mail: [admission.smims@smu.edu.in](mailto:admission.smims@smu.edu.in)



[www.smu.edu.in](http://www.smu.edu.in)