

CENTRAL BANK OF INDIA CLERKS EXAM

EXAM HELD ON : 13-02-2011

(BASED ON MEMORY)

REASONING

- Four of the following five are alike in a certain way and so form a group. Which is the one that does not belong to the group?
 (1) Iron (2) Copper
 (3) Ceramic (4) Silver
 (5) Zinc
- In a certain code 'RAISE' is coded as 'SBJTF' and 'LEASE' is coded as 'MFBTF'. How will 'FLOWN' be coded in the same code?
 (1) PXMGO (2) CXMPO
 (3) GMPXO (4) PXOGM
 (5) XOPGM
- Rajesh correctly remembers that his friend Sanjay started working after April but before September. Vinod correctly remembers that Sanjay did not have a job before May. Madan correctly remembers that the month Sanjay started working had 30 days. In which month of the year did Sanjay definitely start working?
 (1) July (2) August
 (3) September
 (4) either August or September
 (5) June
- Starting from Point X, Joy walked 15 metres towards the West. He turned left and walked 20 metres. He took another left and walked 15 metres. After which he took a right turn and walked for another 12 metres. How far is Joy from point X if he faces North?
 (1) 27 m (2) 35 m
 (3) 32 m (4) 42 m
 (5) None of these
- In a class of 40 children, Saurabh's rank is eighth from the top. Mamta is five ranks below Saurabh. What is Mamta's rank from the bottom?
 (1) 27th (2) 29th
 (3) 28th (4) 26th
 (5) Cannot be determined

- If it is possible to make only one meaningful word from the fourth, sixth, ninth and eleventh letters of the word CONTAMINATE, then the second letter from the left is your answer. If no such word can be formed then your answer is X and if more than one such word can be formed your answer is Y.
 (1) X (2) T
 (3) M (4) A
 (5) Y
 - How many such pairs of letters are there in the word PRODUCTION each of which has as many letters between them (in both forward and backward directions) in the word as they have between them in the English alphabetical series?
 (1) None (2) One
 (3) Two (4) Three
 (5) Four
 - How many meaningful English words can be formed with the letters ABKC using each letter only once in each word? (All the four letters to be used in the word)
 (1) None (2) One
 (3) Two (4) Three
 (5) More than three
 - '2' is subtracted from each odd digit and '1' is added to each even digit in the number 7652348. Which of the following will be the sum of the second digit from the right and the third digit from the left of the new number thus formed?
 (1) 10 (2) 8
 (3) 4 (4) 6
 (5) 9
 - Which of the following will come in place of the question mark?
 ZX YV WS ? PJ
 (1) TO (2) TN
 (3) UO (4) SO
 (5) TP
- Directions (11-15) :** Study the following information carefully and answer the questions given below:

A, B, C, D, P, Q, R and S are sitting around a circle facing the centre. P is third to the left of A and R is second to the right of A. Q is not an immediate neighbour of either P or R. C sits third to the right of S and S sits exactly between C and R.

- Who sits between P and S?
 (1) D (2) R
 (3) Q (4) A
 (5) C
- How many persons sit between A and P when counted in anti clockwise direction from A?
 (1) One (2) Two
 (3) Three (4) Four
 (5) Five
- Who is sitting to the immediate right of A?
 (1) Q (2) R
 (3) D (4) B
 (5) None of these
- Four of the following five are similar in a certain way based on their positions in the seating arrangement and so form a group. Which of the following does not belong to that group?
 (1) QD (2) CS
 (3) AB (4) SR
 (5) PC
- What is S's position with respect to D?
 (1) Third to the left
 (2) Third to the right
 (3) Second to the left
 (4) Immediate right
 (5) Fourth to the right

Directions (16-20) : Study the following arrangement carefully and answer the questions given below —

2 4 8 5 6 β 1 3 0 6

4 5 2 # 9 7 1 @ 3 C

- Which of the following digit/symbol is second to the right of the tenth from the left end?
 (1) @ (2) 4
 (3) 3 (4) 5
 (5) 2
- How many pairs of numbers are there in the series highlighted in

bold in the above arrangement each of which has as many numbers between them (in both forward and backward directions) as they have between them in the numerical series?

- (1) One (2) Two
(3) Three (4) Four
(5) Five

16. How many symbols are there in the above arrangement, each of which is immediately followed by a perfect square? (one is also a perfect square)

- (1) One (2) Two
(3) Three (4) Four
(5) Five

19. How many perfect squares are there in the above arrangement, each of which is immediately preceded by an even number? (one is also a perfect square)

- (1) None (2) One
(3) Two (4) Three
(5) More than three

20. If all the symbols are dropped from the above arrangement, which of the following will be the twelfth from the right end of the above arrangement?

- (1) 2 (2) 5
(3) 3 (4) 7
(5) None of these

Directions (21-25) : In each question below are three statements followed by two conclusions numbered I and II. You have to take the three given statements to be true even if they seem to be at variance from commonly known facts and then decide which of the given conclusions logically follows from the three statements disregarding commonly known facts.

Give answer (1) if only conclusion I follows.

Give answer (2) if only conclusion II follows.

Give answer (3) if either conclusion I or conclusion II follows.

Give answer (4) if neither conclusion I nor conclusion II follows.

Give answer (5) if both conclusions I and II follow

21. Statements :

Some black are blue.
No blue are white.
Some white which are black are grey.

Conclusions :

- I. Some grey are blue.
II. Some white are not black.

22. Statements :

All villages are cities.
All cities are countries.
All countries are towns.

Conclusions :

- I. All towns are villages.
II. Some cities are not towns.

23. Statements :

Some books are poetry.
All poetry is philosophy.
Some philosophy is psychology.

Conclusions :

- I. Some books are philosophy.
II. Some psychology is not philosophy.

24. Statements :

All children are students.
Some students are adults.
All adults are workers.

Conclusions :

- I. Some students are workers.
II. All children are adults.

25. Statements :

Some actors are dancers.
All dancers are musicians.
No musicians are painters.

Conclusions :

- I. Some painters are actors.
II. No painters are dancers.

Directions (26-30) : The following questions are based on the five three digit numbers given below:

374 659 821 945 247

26. If 1 is subtracted from the last digit of each of the numbers, how many numbers thus formed will be divisible by two?

- (1) None (2) One
(3) Two (4) Three
(5) Four

27. If in each number, the first and the second digits are interchanged, which of the following will be the third lowest number?

- (1) 374 (2) 659
(3) 821 (4) 945
(5) 247

28. If in each number, all the three digits are arranged in ascending order within the number, which of the following will be the second highest number?

- (1) 374 (2) 659
(3) 821 (4) 945
(5) 247

29. If one is subtracted from the last digit of each of the numbers, in how many numbers thus formed will the last digit be a perfect square? (one is also a perfect square)

- (1) None (2) One
(3) Two (4) Three
(5) Four

30. If in each number, 2 is added to the middle digit and then the first 2 digits are interchanged, which number will be the largest?

- (1) 659 (2) 945
(3) 374 (4) 247
(5) 821

Directions (31-35) : Study the information carefully and answer the given questions :

A, D, E, F, H, J and K are sitting in a straight line facing north (not necessarily in the same order).

(a) D sits fourth to the right of A.

(b) E is on the extreme left end of the line. There are five persons between E and K.

(c) J sits third to the left of K. F is not an immediate neighbour of D.

31. Which of the following represents the person sitting exactly in the middle of the line?

- (1) J (2) F
(3) H (4) A
(5) None of these

32. How many persons sit between A and H?

- (1) One (2) Two
(3) Three (4) Four
(5) More than four

33. Four of the following five are alike in a certain way based on their seating positions in the above arrangement and so form a group. Which pair does not belong to that group?

- (1) AF (2) JH
(3) EA (4) DK
(5) FH

34. What is the position of F with respect to H?

- (1) Second to the right
(2) Immediate to the right
(3) Immediate to the left
(4) Third to the right
(5) Second to the left

35. If the seating arrangement (from left to right) is taken as English alphabets, how many such pairs of letters are there in the arrangement each of which has a

many letters between them (in both forward and backward directions) in the arrangement, as they have between them in the English alphabetical series?

- (1) None (2) One
(3) Two (4) Three
(5) More than three

Directions (36-40) : In each question below is given a group of letters followed by five combinations of number/symbol codes numbered (1), (2), (3), (4) and (5). You have to find out which of the combinations correctly represents the group of letters based on the following coding system and the conditions and mark the number of that combination as your answer. Two or more conditions may be applicable to a single combination.

Letter	P	M	A	C	X	E	D	O	U	H	B	N	Z	Y	O
Number	3	5	4	7	9	8	6	2	1	0	8	1	4	5	7

Conditions

- (i) If both the first and the last elements are vowels, the codes for the vowels are to be interchanged.
- (ii) If the group of elements contains a single vowel, that vowel is to be coded as the code for the element following it.
- (iii) If the second element is a vowel and the fifth element is a consonant, the vowel is to be coded as the code for the consonant.

36. PXUNCM
(1) 9#173 (2) 9#1173
(3) 397178 (4) 391178
(5) 39#178
37. DEHAZN
(1) 6#0441 (2) 6#04961
(3) 11#0496 (4) 6#0487
(5) 6#04061
38. MHCYBG
(1) 9#7587 (2) 7#7588
(3) 9#7788 (4) 7588#7
(5) 7#5788
39. OMPCZA
(1) 2837#4
(2) 4379#2
(3) 4837#2
(4) 2#3784
(5) 483722
40. OUBNYE
(1) 8#8152 (2) 8#8152
(3) 2#8158 (4) 258158
(5) 8#81#2

Directions (41-45) : In each of these questions there are two sets of figures. The figures on the left are Problem Figures (four figures and one question-marked space) and those on the right are Answer Figures indicated by numbers 1, 2, 3, 4 and 5. A series is established if one of the five Answer Figures is placed at the "question-marked space". Question Figures form a series if they change from left to right according to some rule. The number of the Answer Figure which should be placed in the question-marked space is the answer. All the five figures i.e. four Problem Figures and one Answer Figure placed in the question-marked space should be considered as forming the series.

	Problem Figures	Answer Figures
41.		
42.		
43.		
44.		
45.		

Directions (46-50) : In each of the questions given below which one of the five answer figures on the right should come after the problem figures on the left, if the sequence were continued?

	Problem Figures	Answer Figures
46.		
47.		
48.		
49.		
50.		

NUMERICAL ABILITY

Directions (51-75) : What should come in place of the question mark (?) in the following questions?

51. $34.36 - 45.67 + 86.56 = ? + 37.96$
 (1) 31.29 (2) 32.29
 (3) 38.49 (4) 37.49
 (5) None of these
52. $\frac{3}{11}$ of 77% of 800 = ?
 (1) 148 (2) 168
 (3) 218 (4) 228
 (5) None of these
53. $[5 \times 6]^2 \times [9 \times 6] + [4 \times 6] = ?$
 (1) 2055 (2) 2505
 (3) 2205 (4) 2025
 (5) None of these
54. $(54.4 \times 5 \times 8) \div 16 + 8 = (?)^2$
 (1) $(12)^2$ (2) $\sqrt{12}$
 (3) $2\sqrt{12}$ (4) $-\sqrt{12}$
 (5) 12
55. $3353 - 7855 + 9498 = ? + 2233$
 (1) 2673 (2) 2763
 (3) 3534 (4) 3453
 (5) None of these
56. 7% of 350 - $(6)^2 = 48$
 (1) 12 (2) 24
 (3) 42 (4) 54
 (5) None of these
57. $\sqrt{12 \times 145 + 6 + 34} = ?$
 (1) -18 (2) $(324)^2$
 (3) 18 (4) $\sqrt{18}$
 (5) None of these
58. $(13)^2 - (5)^3 - \sqrt{675} + 7 = (?)^2$
 (1) 10 (2) 20
 (3) $\sqrt{5}$ (4) $(25)^2$
 (5) 5
59. $1\frac{2}{7} + 1\frac{1}{14} - 1\frac{3}{28} = ?$
 (1) $1\frac{1}{4}$ (2) $1\frac{2}{7}$
 (3) $1\frac{1}{7}$ (4) $1\frac{3}{14}$
 (5) None of these
60. $431.44 - 44.83 = ? - 62.85$
 (1) 450.46 (2) 468.56
 (3) 449.46 (4) 439.56
 (5) None of these

61. $(213 - 345) + 8 = ? + (-4)$
 (1) 25 (2) -66
 (3) -4.125 (4) 66
 (5) None of these
62. $45 \times 24 + 12 - 35 = ? - 153$
 (1) 208 (2) 218
 (3) 145 (4) 155
 (5) None of these
63. $\frac{11}{17} - \frac{9}{34} + \frac{7}{17} = ?$
 (1) $\frac{15}{17}$ (2) $\frac{25}{34}$
 (3) $\frac{27}{34}$ (4) $\frac{12}{17}$
 (5) None of these
64. $635 - 345 + 246 = ? + (15)^2$
 (1) 415 (2) 411
 (3) 315 (4) 321
 (5) None of these
65. $\frac{88}{24} \times \frac{105}{51} + \frac{33}{34} = ?$
 (1) $4\frac{5}{18}$ (2) $4\frac{7}{9}$
 (3) $7\frac{4}{9}$ (4) $4\frac{7}{18}$
 (5) None of these
66. $(12 \times 7) - (13 \times 5) - 10 = ? + 5$
 (1) $1\frac{4}{5}$ (2) 25
 (3) $1\frac{3}{5}$ (4) 90
 (5) None of these
67. $(6)^4 + (36)^2 \times 216 = 6^{n-5}$
 (1) 3 (2) 6
 (3) 1 (4) 4
 (5) None of these
68. $0.4 \times 7.5 + 0.6 \times 25 = ?$
 (1) 125 (2) 155
 (3) 115 (4) 145
 (5) None of these
69. 66% of $? + 61 = 490$
 (1) 750 (2) 850
 (3) 650 (4) 550
 (5) None of these
70. $92 \times 5 + 10 + 3 = (?)^2$
 (1) $\sqrt{7}$ (2) -7
 (3) 28 (4) $(49)^2$
 (5) $(28)^2$
71. $22 \times 12 + 134 + 43 = 132 + ?$
 (1) 309 (2) 329

- (3) 209 (4) 229
 (5) None of these

72. $2\frac{1}{3}$ of $1\frac{1}{4}$ of (7) = 280

- (1) 116 (2) 124
 (3) 48 (4) 96
 (5) None of these

73. 9% of 5600 - 45% of 340 = ?

- (1) 331 (2) 401
 (3) 431 (4) 351
 (5) None of these

74. $15.96 - 42.04 - 75.17 = ?$

- (1) 48.16 (2) 48.36
 (3) 44.36 (4) 45.29
 (5) None of these

75. $\frac{7}{15}$ of $\frac{5}{12}$ of 540 = ?

- (1) 160 (2) 150
 (3) 210 (4) 105
 (5) None of these

76. Out of the fractions, $\frac{5}{12}$, $\frac{7}{13}$,

$\frac{4}{7}$, $\frac{4}{15}$ and $\frac{9}{14}$ which is the third highest?

- (1) $\frac{5}{12}$ (2) $\frac{7}{13}$

- (3) $\frac{4}{7}$ (4) $\frac{4}{15}$

- (5) $\frac{9}{14}$

77. The average speed of a tractor is two-fifth of the average speed of a car. The car covers 450 km in 6 hours. How much distance will the tractor cover in 8 hours?

- (1) 210 km (2) 240 km
 (3) 420 km (4) 480 km
 (5) None of these

78. The marks of six boys in a group are 48, 59, 87, 37, 78 and 57. What are the average marks of all six boys?

- (1) 62 (2) 64
 (3) 61 (4) 63
 (5) None of these

79. What is seventy four percent of five-eighth of 1200?

- (1) 555 (2) 565
 (3) 445 (4) 455
 (5) None of these

80. Sumit purchased an item for ₹ 6,500 and sold it at the gain of 24%. From that amount he purchased another item and sold it at the loss of 20%. What is his overall gain/loss?

- (1) Loss of ₹ 42
(2) Gain of ₹ 42
(3) Loss of ₹ 52
(4) Neither gain nor loss
(5) None of these

81. How many sacks are required for filling 1026 kg of rice if each sack is filled with 14 kg of rice?

- (1) 19 (2) 15
(3) 7 (4) 9
(5) None of these

82. Mani's monthly income is three-fourth of Rakhi's monthly income. Rakhi's monthly income is ₹ 38,000. What is Mani's annual income?

- (1) ₹ 4.32 lacs (2) ₹ 3.42 lacs
(3) ₹ 3.22 lacs (4) ₹ 4.22 lacs
(5) None of these

83. What will come in place of both the question marks (?) in the following questions?

$$\frac{(\?)^{3/5}}{33} = \frac{3}{(\?)^{2/5}}$$

- (1) 108F (2) $\sqrt{93}$

- (3) $3\sqrt{11}$ (4) 90

(5) None of these

84. What value will be obtained if the square of 22 is subtracted from the cube of 12?

- (1) 1244 (2) 344
(3) 1454 (4) 1354

(5) None of these

85. The ratio between the present ages of Tarun and Varun is 3 : 7 respectively. After 4 years Varun's age will be 39 years. What was Tarun's age 4 years ago?

- (1) 12 years (2) 13 years
(3) 19 years (4) 18 years
(5) None of these

86. Ravi consistently runs 350 metres every day except on Tuesdays when he runs 500 metres. How many kilometres will he run in two weeks? (In this question week starts from Monday).

- (1) 4.5 km (2) 4.8 km
(3) 5.2 km (4) 5.4 km
(5) None of these

87. The simple interest accrued in 3 years on a principal of ₹ 25,000 is three-twentieth of the principal. What is the rate of simple interest p.c.p.a.?

- (1) 5 (2) 4
(3) 6 (4) 3
(5) None of these

88. The sum of five consecutive even numbers is equal to 170. What is the sum of the second largest number amongst them and the square of the smallest number amongst them together?

- (1) 940 (2) 632
(3) 938 (4) 934
(5) None of these

89. The area of a square is four times the area of a rectangle. The length of the rectangle is 25 cm, and its breadth is one cm less than one-fifth of its length. What is the perimeter of the square?

- (1) 40 cm. (2) 60 cm.
(3) 160 cm.
(4) Cannot be determined
(5) None of these

90. Sohan got 54 marks in Hindi, 65 marks in Science, 89 marks in Maths, 89 marks in Social Science and 88 marks in English. The maximum marks of each subject are 100. How much overall percentage of marks did he get?

- (1) 74 (2) 69
(3) 68 (4) 72
(5) None of these

91. 8 women can complete a piece of work in 15 hours. In how many hours will 12 women complete the same piece of work?

- (1) 12 (2) 6
(3) 9 (4) 10
(5) None of these

92. The length of a rectangle is 24 cm, which is 10 cm. more than the diameter of a circle. What is the area of the circle?

- (1) 210 sq. cm. (2) 176 sq. cm.
(3) 132 sq. cm. (4) 154 sq. cm.
(5) None of these

Directions (93-95) : What will come in place of the question mark (?) in the following number series?

93. 9 20 42 75 119 (?)

- (1) 174 (2) 170
(3) 168 (4) 160
(5) None of these

94. 23 32 45 62 83 (?)

- (1) 116 (2) 106
(3) 102 (4) 118
(5) None of these

95. 17 23 35 59 107 (?)

- (1) 217 (2) 229
(3) 203 (4) 227
(5) None of these

Directions (96-100) : In each of these questions an equation is given with a question mark (?) in place of a correct symbol. Based on the values on the right hand side and the left hand side of the question mark, you have to decide which of the following symbols will come in place of the question mark.

Give answer

If in place of question mark (?) following will come

- (1) > (greater than)
(2) = (equal to)
(3) < (less than)
(4) ≥ (either greater than or equal to)
(5) ≤ (either lesser than or equal to)

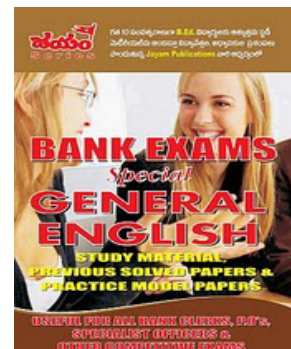
96. $\left[\left(\sqrt{361} - \sqrt{49} \right) \right] ? \left[\sqrt{144} \right]$

97. $[132 - (16 - 42)] ? [(10)^2 \times 2 - 44]$

98. $[25 - (2)^2 \times 6] ? [6^2 \times 4 - 19 \times 2]$

99. $[(63 \div 7) + (44 + 11)] ? \pm [(156 - 65) + 7]$

100. $[16 \times 7] + 15] ? [\sqrt{289} + 32]$



CLERICAL APTITUDE

Directions (101-135) : In each question below a combination of Name and Address is given in the first column at the left followed by four such combinations one each under the columns (1), (2), (3) and (4). You have to find out the combination which is exactly the same as the combination in the first column. The number of that column which contains that combination is the answer. If all the combinations are different, the answer is (5).

	(1)	(2)	(3)	(4)	(5)	
101.	R. S. Dhawan Parag' 6409, Nahan-15	P. S. Dhawan Parag' 6409, Nahan-15	R. S. Dhawan Parag' 6409, Nahan-15	R. S. Dhawan Parag' 5409, Nahan-15	R. S. Dhawan Parag' 6409, Nahan-25	None
102.	Mukha Singh Golden Transport Ph-263941/46	Mukha Singh Golden Transport Ph-263941/46	Mukha Singh Golden Transport Fax-263941/46	Mukha Singh Golden Transport Ph-263941/66	Mukha Singh Golden Transport Ph-263941/76	None
103.	Nanihal Bitta Thather Galli Nahan-26	Nanihal Bitta Thather Galli Nahan-26	Nanihal Bitta Thather Galli Nahan-26	Nanihal Bitta Thather Galli Nahan-16	Nanihal Bitta Thather Galli Nahan-26	None
104.	Dheodor Petit 632 'N', Sect. L, Cap-74/IV/231	Dheodor Petit 362 'N', Sect. L, Cap-74/IV/231	Dheodor Petit 632 'N', Sect. L, Cap-84/IV/231	Dheodor Petit 632 'N', Sect. L, Cap-74/IV/231	Dheodor Petit 632 'B', Sect. L, Cap-74/IV/231	None
105.	K. P. Mathur H.No.232/K Chandigarh-17	P. K. Mathur H.No.232/K Chandigarh-17	K. P. Mathur K.No.232/K Chandigarh-17	K. P. Mathur H.No.232/K Chandigarh-17	K. P. Mathur H.No.232/K Chandigarh-17	None
106.	Pammi Gulati Kothi-699, 'L' G.T. Road-25	Pammi Gulati Kothi-699, 'L' G.T. Road-25	Pammi Gulati Kothi-699, 'L' G.T. Road-25	Pammi Gulati Kothi-669, 'L' G.T. Road-25	Pammi Gulati Kothi-699, 'L' G.T. Road-15	None
107.	Lali Da Dhaba Ludhiana-24/9 Pin-269863	Bali Da Dhaba Ludhiana-24/9 Pin-269863	Lali Da Dhaba Ludhiana-29/4 Pin-269863	Lali Da Dhaba Ludhiana-24/9 Pin-269863	Lali Da Dhaba Ludhiana-24/9 Pin-269863	None
108.	Mohalir Go. Tele-853659 Fax 14263112	Mohalir Go. Tele-853659 Fax 14263112	Mohalir Go. Tele-853659 Fax 14263112	Mohalir Go. Pin-853659 Fax 14263112	Mohalir Go. Tele-853659 Ph 14263112	None
109.	Manish Bagga Pinjour Bagan, Pin-1763981	Manish Bagga Pinjour Bagan, Pin-1763981	Manish Bagga Pinjour Bagan, Pin-1763981	Manish Bagga Pinjour Garden, Pin-1763981	Manish Bagga Pinjour Bagan, Tel-1763981	None
110.	Tikam Haryanvi 211, Sector 19 'B' Hamirpur-26	Tikam Haryanvi 211, Sector 19 'B' Hamirpur-26	Tikam Haryanvi 112, Sector 19 'B' Hamirpur-26	Tikam Haryanvi 211, Sector 19 'B' Hamirpur-26	Tikam Haryanvi 211, Sector 19 'D' Hamirpur-26	None
111.	Vibhuti Pandey Cottongreen House Shimla - 77	Vibhuti Pandey Cottongreen House Shimla - 77	Vibhuti Pandey Cottongreen House Shimla - 77	Vibhuti Pandey Cottongreen House Shimla - 77	Vibhuti Pandey Cottongreen House Shimla - 66	None
112.	O. S. Patra 16/309, M.I. Road Sihora - 369705	D. S. Patra 16/309, M.I. Road Sihora - 369705	O. S. Patra 26/309, M.I. Road Sihora - 369705	O. S. Patra 16/309, N.I. Road Sihora - 369705	O. S. Patra 16/309, M.I. Road Sihora - 369705	None
113.	Kavita Pareekh 731 0/936, MIG Virangam - 14	Kavita Pareekh 731 8/936, MIG Virangam - 14	Kavita Parikh 731 0/936, MIG Virangam - 14	Kavita Pareekh 731 0/936, MIG Virangam - 24	Kavita Pareekh 731 0/936, LIG Virangam - 14	None
114.	Jagur Pattaya 12/906 'B' Block, Hisar-395386	Jagur Pattaya 12/906 'B' Block, Hisar-395386	Jagur Pattaya 12/906 'B' Block, Hisar-395386	Jagur Pattaya 21/906 'B' Block, Hisar-395386	Jagur Pattaya 12/906 'B' Block, Hisar-395386	None

115.	Hufrish Atodaria 637/IXth/S Globus House 8	Hufrish Atodaria 637/IXth/S Globus House 8	Hufrish Atodaria 637/IXth/D Globus House 8	Hufrish Atodaria 637/IXth/S Globus House 8	Hufrish Atodaria 637/IXth/S Global House 8	None
116.	Julie Bhatia 906/531, Mansa, Shimla-19	Julie Bhatia 906/531, Mansa, Shimla-19	Julia Bhatia 906/531, Mansa, Shimla-19	Julie Bhatia 906/531, Mansa, Shimla-19	Julie Bhatia 906/531, Mansa, Shimla-29	None
117.	Surendra Lal Khambhat (South) Pin - 378509	Surender Lal Khambhat (South) Pin - 378509	Surendra Lal Khambhat (North) Pin - 378509	Surendra Lal Khambhat (South) Pin - 378509	Surendra Lal Khambhat (South) Pin - 378509	None
118.	Suraj Kanta Palanpur (W) Pin - 395708	Suraj Kanta Palanpur (W) Pin - 395708	Suroj Kanta Palanpur (W) Pin - 395708	Suraj Kanti Palanpur (W) Pin - 395708	Suraj Kanta Palanpur (W) Pin - 395708	None
119.	Collector House Sect. 14, Main Rd. Panipat-17	Collector House Sect. 14, Main Rd. Panipat-17	Collector House Sect. 14, Main Rd. Panipat-17	Collector Home Sect. 14, Main Rd. Panipat-17	Collector House Sect. 14, Main Rd. Panipat-17	None
120.	Avni Parekh Nagardas Road Goregaon - 61	Avni Parekh Nagardas Road Goregaon - 61	Avni Parekh Nagardas Lane Goregaon - 61	Avni Parekh Nagardas Road Goregaon - 61	Avni Parekh Nagardas Road Goregaon - 16	None
121.	Diwakar Singh Jato ki Chouki Jalandhar-63	Diwakar Singh Bato ki Chouki Jalandhar-63	Diwakar Singh Jato ki Chouki Jalandhar-63	Diwakar Singh Jato ki Chouki Jalandhar-63	Diwakar Singh Jato ki Chouki Jalandhar-63	None
122.	Puttar Khan Unchi Kothi, Nahan-47	Puttri Khan Unchi Kothi, Nahan-47	Puttar Khan Nichi Kothi, Nahan-47	Puttar Khan Unchi Kothi, Nahan-74	Puttar Khan Unchi Kothi, Nahan-47	None
123.	Venugopalan M. O. (Admin.) Bhuj - 3698652	Venugopalan C. M. O. (Admin.) Bhuj - 3698652	Venugopalan C. M. O. (Admin.) Bhuj - 3698652	Venugopalan O. C. M. (Admin.) Bhuj - 3698652	Venugopalan C. M. O. (Admin.) Bhoj - 3698652	None C.
124.	Lynette Montiero D'mello Road Goa - 11	Lynette Montiero B'mello Road Goa - 11	Lynette Montiero D'mello Road Goa - 21	Lynette Montiero D'mello Road Goa - 11	Lynette Montiera D'mello Road Goa - 11	None
125.	Mansi Doshi H. No. 16 Mumbai - 69	Mansi Doshi H. No. 16 Mumbai - 69	Mansi Joshi H. No. 16 Mumbai - 69	Mansi Doshi H. No. 61 Mumbai - 69	Mansi Doshi H. No. 16 Mumbai - 96	None
126.	R. K. Kukreja Sr. Stores Off Chamba-26	K. R. Kukreja Sr. Stores Off Chamba-26	R. K. Kukreja Jr. Stores Off Chamba-26	R. K. Kukreja Sr. Stores Off Chamba-26	R. K. Kukreja Sr. Stores Off Chamba-62	None
127.	Ketki Doshi H.No.133,IV Lane Rajkot - 36531	Ketki Doshi H.No.133,IV Lane Rajkot - 36531	Ketki Doshi H.No.133,IV Lane Rajkot - 36531	Ketki Doshi Q.No.133,IV Lane Rajkot - 36531	Ketki Doshi H.No.133,IV Lane Rajkot - 36513	None
128.	Prof. Pal Bal P. B. Classes Datia 485061	Prof. Bal Pal P. B. Classes Datia 485061	Prof. Pal Bal D. B. Classes Datia 485061	Prof. Pal Bal P. B. Classes Datia 485061	Prof. Pal Bal P. B. Classes Datia 485061	None
129.	Bageesh Dev Cycle Mart Ph-893269	Bageesh Dev Cycle Mart Ph-893269	Bageesh Dev Cycle Mart Ph-893269	Bageesh Dev Cycle Mart Ph-893269	Bageesh Dev Cycle Mart Ph-893266	None
130.	Komal Shirali Venkatesh Chowk Nampalli - 74	Kamal Shirali Venkatesh Chowk Nampalli - 74	Komal Shirali Venkatesh Chowk Nampalli - 74	Komal Shirali Venkatesh Chowk Nampalli - 74	Komal Shirali Venkatesh Chowk Nampalli - 47	None

131. Naresh Jain Phool Galli, 27 Ujjain 489650	Naresh Jain Phool Galli, 27 Ujjain 489650	Naresh Jain Phool-Galli, 72 Ujjain 489650	Naresh Jain Phool Galli, 27 Ujjain 489500	Naresh Jain Phool Galli, 27 Ujjain 489650	None
132. Nasim Akhtar Green Villa - 33rd Begumpeth - 2	Nasim Akhtar Green Villa - 33rd Begumpeth - 2	Nasim Akhtar Green Villa - 63rd Begumpeth - 2	Nasim Akhtar Green Villa - 63rd Begumpeth - 2	Nasim Akhtar Green Villa - 33rd Begumpeth - 3	None
133. Shruti Vaidya Fountain's Palace Shimoga - 47	Shruti Vaidya Fountain's Palace Shimoga - 47	Shruti Vaidya Fountain's Palace Shimoga - 47	Shruti Vaidya Fountain's Place Shimoga - 47	Shruti Vaidya Fountain's Palace Shimoga - 74	None
134. P. K. Arora Everglade Apts. Tel - 5645312	P. K. Arora Everglade Apts. Tel - 5645312	P. K. Arora Everglade Apts. Tel - 5645213	P. K. Arora Everglide Apts. Tel - 5645312	P. K. Arora Everglade Apts. Tel - 5645312	None
135. Principal Head D.A. V. School. Leh-1695436	Principle Head D.A. V. School, Leh-1695436	Principal Head D.A. V. School. Leh-1695436	Principal Head V. D.A. School. Leh-1695436	Principal Head D.A. V. School, Leh-1695436	None

Directions (136-140) : In each of these questions a group of numbers and symbols are given which are to be coded as per the scheme given below. You have to find out which of the answers (1), (2), (3) or (4) has the correct coded form of the given numbers and symbols. If none of the coded forms are correct mark (5) i.e. 'None of these' as the answer.

Symbol	S	P	Q	R	U	V	W	X	Y	Z	0	1	2	3	4	5	6	7	8	9
Code	U	W	R	Z	P	B	K	E	O	J	L	A	N							

136. +2#6@4

- (1) JKWERA (2) JKWGRA
(3) JKWRAE (4) KJWERA
(5) None of these

137. @9%465

- (1) JZPAEU (2) DZPAEW
(3) DZPEAU (4) DZPAEU
(5) None of these

138. 99&

- (1) ZGDPNB (2) ZGDPBN
(3) ZDQBN (4) RGDPBN
(5) None of these

139. @43

- (1) RZBDW (2) RZDBGU
(3) RZBDW (4) WZBDRU
(5) None of these

140. 3658+?

- (1) BEUJL (2) BEUNJL
(3) BEUNJ (4) EBUNJL
(5) None of these

Directions (141-145) : In each question five words are given. Which of them will come at the third place if arranged alphabetically?

141. (1) Snob (2) Sutch
(3) Steeze (4) Snuff
(5) Snide

142. (1) Scrip (2) Scribble
(3) Scriem (4) Scroll
(5) Scripe

143. (1) Orison (2) Oriole
(3) Ormolu (4) Ormate
(5) Original

144. (1) Hurrah (2) Hush
(3) Hurry (4) Hurl
(5) Hurt

145. (1) Bongo (2) Borito
(3) Bonhome (4) Bonnet
(5) Bone

Directions (146-150) : The news item in each question below is to be classified into one of the following five areas: (1) Sports, (2) Health and Science, (3) Politics, (4) Economics, (5) Miscellaneous. The number of the area (1) or (2) or (3) or (4) or (5), as the case may be is your answer.

146. A new study states that the percentage of cancer survivors may increase in forthcoming years.

- (1) Sports
(2) Health and Science
(3) Politics
(4) Economics
(5) Miscellaneous

147. Iron-ore exports see the sharpest fall this year.

- (1) Sports
(2) Health and Science
(3) Politics
(4) Economics
(5) Miscellaneous

148. A famous film star accused of disrupting public peace through instigating speeches.

- (1) Sports
(2) Health and Science

- (3) Politics
(4) Economics
(5) Miscellaneous

149. Three players broke the existing record during the series.

- (1) Sports
(2) Health and Science
(3) Politics
(4) Economics
(5) Miscellaneous.

150. 65 dengue cases reported at a city hospital last week.

- (1) Sports
(2) Health and Science
(3) Politics
(4) Economics
(5) Miscellaneous

ENGLISH LANGUAGE

Directions (151-160) : Read the following passage carefully and answer the questions given below it. Certain words are printed in **bold** to help you locate them while answering some of the questions.

The Sun, while going on his daily rounds saw a princess and fell in love with her. Whenever he could slip away from the heavens he would take human form and go down to the princess to spend some time with her. The princess too became quite fond of him and would wait for him to come. One day the Sun decided to send her a blood-red ruby as a **token** of his love for her. He put the gem in a silk bag, and calling a crow that was flying past, **naked** the bird to deliver the gem to his beloved. Crows had milky white feathers

in those days and it was considered **auspicious** if a crow came anywhere near you. So the Sun was pleased that he had found a crow to deliver the gem. As the crow sped through the sky with the silken bag, the aroma of food lured him. Looking down the crow saw that a wedding feast was in progress, and immediately it was distracted from its mission. Food was one thing it could never resist!

Alighting on a tree nearby, it hung the bag on a twig and went off to find some food. While the crow was feasting, a merchant passing by saw the bag on the tree, and knocked it down with a pole. When he opened the bag and saw its contents he almost swooned in joy. Quickly pocketing the ruby, he filled the bag with dry cow dung that was lying there, and then **deftly** returned the bag to the branch. It was all done so quickly that the crow missed all the action. After having its fill, it flew up to the tree, and picking up the bag took it to the person it was intended for. The princess was in the garden. When the crow gave her the bag, she took it eagerly, knowing that it was from the Sun. But when she saw its contents she reeled back in shock and anger. Believing that it was the Sun's way of telling her that he did not care for her, she flung the bag away, rushed to her palace, and never came out again. When the Sun learnt of what had happened he was **furious**. So great was his anger that when he turned his **scorching** gaze on the crow, its feathers were burned black. Its feathers have been black ever since. The ruby did not stay with the man who stole it. It fell out of his pocket and rolled into a deep pit. Men have been trying to dig it out ever since. Many precious stones have been found in the process, making Myanmar one of the richest sources of rubies and sapphires, but the ruby that the Sun sent to the princess is yet to be found.

151. What did the Sun send for the princess as a token of his love?
- (1) He sent her the crow.
 - (2) He sent her dry cow dung.
 - (3) He sent her a red ruby.
 - (4) He gifted her the city of Myanmar.
 - (5) None of these
152. Why did the princess fling the gift away?
- (1) She did not like rubies.

- (2) The crow was known to bring bad luck.
 - (3) She had found cow dung in the bag.
 - (4) She thought the Sun was playing a cruel joke on her.
 - (5) She had wanted the Sun to personally deliver it.
153. What led to the discovery of precious stones in Myanmar?
- (1) Humans discovered the stones in their search for the lost ruby.
 - (2) The crow spread the news of the lost ruby.
 - (3) The princess went in search of the lost ruby and discovered other precious stones.
 - (4) The merchant went in search of the ruby that fell off his pocket.
 - (5) The merchant's clumsiness led to the discovery of precious stones.
154. While on its way to the princess, the crow was distracted by
- (1) The merchant calling out to him.
 - (2) The wedding that was taking place below.
 - (3) The ruby that the Sun sent for the princess.
 - (4) The temptation of the smell of food.
 - (5) The huge crowd at the wedding.
155. Why did the Sun send his gift for the princess along with the crow?
- (1) The princess loved crows.
 - (2) The crow was the only bird available at the time.
 - (3) The crow was considered to be an auspicious bird.
 - (4) The crow knew where the princess lived.
 - (5) The Sun trusted the crow
156. The joy of the merchant on finding the ruby was short lived because
- (1) He did not succeed in stealing the ruby.
 - (2) The ruby fell out of his pocket.
 - (3) The crow returned just in time and caught him red handed.
 - (4) He soon discovered many more precious stones.
 - (5) None of these

157. How did the crow get its black colour?
- (1) The crow was punished by the Sun for its clumsiness.
 - (2) The crow was burned black by the scorching gaze of the angry Sun.
 - (3) The crow was not considered auspicious any more.
 - (4) The crow was cursed by the merchant.
 - (5) None of these
158. What could be an appropriate title for the story?
- (1) The Careless Black Crow
 - (2) Myanmar and Its Mineral Riches
 - (3) The Sun and the Princess
 - (4) The Depressed Princess
 - (5) The Sun and the Ruby
159. What was the crow's mission?
- (1) To deliver the gift to the princess.
 - (2) To attend the wedding.
 - (3) To make the Sun angry.
 - (4) To keep the princess in her palace
 - (5) To protect the princess from the harmful Sun.
160. What message did the princess get after opening the bag?
- (1) That the Sun truly loved her.
 - (2) That the crow was an evil bird.
 - (3) That the crow was playing a joke on her.
 - (4) That the Sun did not love her anymore.
 - (5) That the cow dung was a token of the Sun's love for her.
- Directions (161-163):** Choose the word which is most nearly the **SAME** in meaning as the word printed in **bold** as used in the passage.
161. **Token**
- (1) Symbol
 - (2) Insurance
 - (3) Slip
 - (4) Assurance
 - (5) Investment
162. **Deftly**
- (1) Skillfully
 - (2) Blindly
 - (3) Eagerly
 - (4) Rightfully
 - (5) Innocently
163. **Auspicious**
- (1) Religious
 - (2) Lucky
 - (3) Fulfilling
 - (4) Charming
 - (5) Normal

Directions (164-165): Choose the word which is most **OPPOSITE** in meaning of the word printed in **bold** as used in the passage.

164. Scorching

- (1) Cool (2) Heated
(3) Warm (4) Silent
(5) Composed

165. Furious

- (1) Beaming (2) Angry
(3) Forgiving (4) Calm
(5) Sulking

Directions (166-175): Read each sentence to find out whether there is any grammatical error in it. The error, if any, will be in one part of the sentence. The number of that part is the answer. If there is no error, the answer is (5) i.e. 'No Error'. (Ignore the errors of punctuation, if any.)

166. When we (1)/ reached the shops, (2)/ we find that (3)/ they were all closed.(4)/ No Error (5)

167. Poor people (1)/ has no money (2)/ therefore they cannot afford (3)/ proper medical facilities. (4)/ No Error (5)

168. The course is for (1)/ something who is interested (2)/ in learning (3)/ about computers. (4)/ No Error (5)

169. We were surprised (1)/ that she participated (2)/at the performance (3)/ held at NCPA. (4)/ No Error (5)

170. As soon as (1)/ I getting my (2)/ first salary (3)/ I spent all my money. (4)/ No Error (5)

171. The principal (1)/ introducing me (2)/ to some of her (3)/ teaching staff. (4)/ No Error (5)

172. The doctors said that (1)/ he was making good progress (2)/and would not (3)/ need an operation. (4)/ No Error (5)

173. Instead of (1)/ to buy books, (2)/ I borrow them (3)/ from the library. (4)/ No Error (5)

174. By the times (1)/ we reached the classroom, (2)/ the lecture had (3)/ already begun. (4)/ No Error (5)

175. The Indian government (1)/ should make sure that (2)/ men and women are (3)/given equal opportunities. (4)/ No Error (5)

Directions (176-180): Pick out the most effective word from the given words to fill in the blanks to make the sentence meaningfully complete.

176. I was annoyed _____ John for arriving late.

- (1) on (2) about
(3) by (4) for
(5) with

177. We are _____ the possibility of buying our own house.

- (1) judging (2) initiating
(3) threatening (4) applying
(5) considering

178. The student did not pay _____ to the instructions that were given to her in class.

- (1) ear (2) awareness
(3) notice (4) attention
(5) closure

179. The young boy was unhurt _____ for a minor injury to his knee.

- (1) less (2) except
(3) also (4) just
(5) while

180. There is _____ chance of seeing her again _____ she leaves.

- (1) perhaps, when
(2) also, as
(3) little, before
(4) full, therefore
(5) more, after

Direction (181-185): In each question below four words which are numbered (1), (2), (3) and (4) have been printed, of which one word may be wrongly spelt. The number of that word is the answer. If all the four words are correctly spelt, mark (5) i.e. "All Correct" as the answer.

181. (1) Accept (2) Reciept
(3) Frequent (4) Gesture
(5) All Correct

182. (1) Justise (2) Practise
(3) Meriace (4) Variance
(5) All Correct

183. (1) Complaint (2) Alerted
(3) Cheated (4) Hunged
(5) All Correct

184. (1) Remorse (2) Noble
(3) Upsurge (4) Incline
(5) All Correct

185. (1) Blister (2) Warrant
(3) Arrest (4) Mannual
(5) All Correct

Directions (186-190): Rearrange the following six sentences (A), (B), (C), (D), (E) and (F) in the proper sequence to form a meaningful paragraph; then answer the questions given below them.

(A) At first he got scared, but then he thought, "I have never worshipped her that is why I am not able to get anything from my land.

(B) One day unable to tolerate the summer heat, he went to rest under a big banyan tree.

(C) He rushed to his village and placed his humble offering of milk in a bowl before the snake.

(D) Vishnu Raman was a poor Brahmin and a farmer by profession.

(E) The next day when he returned, he was rewarded with a gold coin in the bowl he left behind.

(F) Just as he was preparing to lie down he saw a huge Cobra swaying with his hood open.

186. Which of the following should be the **SECOND** sentence after the rearrangement?

- (1) B (2) C
(3) E (4) D
(5) F

187. Which of the following should be the **FIRST** sentence after the rearrangement?

- (1) A (2) D
(3) F (4) C
(5) E

188. Which of the following should be the **FOURTH** sentence after the rearrangement?

- (1) E (2) F
(3) B (4) A
(5) D

189. Which of the following should be the **FIFTH** sentence after the rearrangement?

- (1) F (2) D
(3) C (4) B
(5) E

190. Which of the following should be the **SIXTH (LAST)** sentence after the rearrangement?

- (1) D (2) B
(3) C (4) E
(5) F

Directions (191-200): In the following passage, there are blanks, each of which has been numbered. These numbers are printed below the passage and against each, five words are suggested, one of which fits the blank appropriately. Find out the appropriate word in each case.

Once upon a time there lived a peacock and a tortoise in close prox-

imity and they became the best of friends. The peacock lived on a tree on the (191) of a stream which was the home of the tortoise. It was a daily (192) for the peacock to dance near the stream after he had a drink of water. He would display his great plumage for the amusement of his friend. One unfortunate day, a bird-catcher who was on the (193) caught the peacock and was about to take him away to the market. The unhappy bird begged his captor to allow him to bid his friend the tortoise good-bye, as it would be the (194) time he would see him. The bird-catcher gave in to his request and took him to the tortoise. The tortoise was in tears to see his friend held (195).

The tortoise asked the bird-catcher to let the peacock go; but he laughed at the request, saying that it was his means of livelihood. The tortoise then said, "If I give you an expensive present, will you let my friend go?" "Certainly," answered the bird-catcher. Whereupon, the tortoise (196) into the water and in a few seconds came up with a handsome pearl, which he presented to the birdcatcher. This was beyond the man's expectations, and he let the peacock go immediately. A short time after, the bird-catcher came back and told the tortoise that he thought he had not paid enough for the release of his friend, and (197), that unless a match to the pearl was obtained for him, he would catch the peacock again. The tortoise, who had already (198) his friend to shift to a distant jungle on being set free, was greatly (199) by the greed of the bird-catcher. "Well," said the tortoise, "if you insist on having another pearl like the one I gave you, give it back to me and I will fish you an exact match for it." The greediness of the bird-catcher prevented his reasoning and he (200) gave the pearl to the clever tortoise. The tortoise swam out with it saying, "I am no fool to give you another pearl, your greediness has left you with nothing."

191. (1) fence (2) brim
(3) banks (4) base
(5) outlet
192. (1) fact (2) lifestyle
(3) phenomenon
(4) adventure (5) routine
193. (1) prowl (2) guard
(3) rounds (4) duty
(5) alert

194. (1) right (2) last
(3) perfect (4) appropriate
(5) justified
195. (1) captive (2) custody
(3) affectionately
(4) badly
(5) carelessly
196. (1) collapsed (2) dived
(3) sunk (4) drowned
(5) shipped
197. (1) wished (2) secured
(3) contemplated
(4) debated (5) threatened
198. (1) advised (2) left
(3) disowned (4) excluded
(5) wanted
199. (1) aware (2) enraged
(3) superstitious
(4) touched
(5) tolerant
200. (1) deftly (2) clumsily
(3) selfishly (4) affectionately
(5) promptly

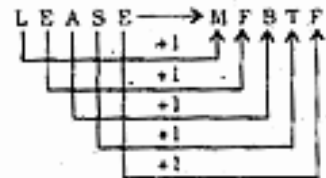
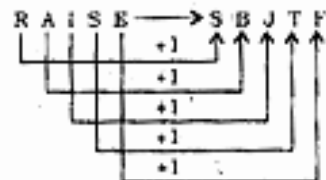
ANSWERS

1.(3)	2.(3)	3.(3)	4.(3)
5.(3)	6.(3)	7.(4)	8.(2)
9.(2)	10.(1)	11.(5)	12.(4)
13.(4)	14.(3)	15.(1)	16.(4)
17.(4)	18.(2)	19.(3)	20.(2)
21.(4)	22.(4)	23.(1)	24.(1)
25.(3)	26.(5)	27.(4)	28.(4)
29.(2)	30.(3)	31.(1)	32.(2)
33.(5)	34.(5)	35.(3)	36.(4)
37.(5)	38.(1)	39.(3)	40.(1)
41.(1)	42.(4)	43.(5)	44.(2)
45.(2)	46.(3)	47.(5)	48.(3)
49.(4)	50.(5)	51.(5)	52.(2)
53.(4)	54.(5)	55.(2)	56.(2)
57.(3)	58.(5)	59.(1)	60.(3)
61.(4)	62.(1)	63.(3)	64.(5)
65.(2)	66.(5)	67.(1)	68.(1)
69.(3)	70.(2)	71.(1)	72.(4)
73.(4)	74.(1)	75.(4)	76.(2)
77.(2)	78.(3)	79.(1)	80.(3)
81.(4)	82.(5)	83.(4)	84.(1)
85.(5)	86.(3)	87.(1)	88.(5)
89.(5)	90.(2)	91.(4)	92.(4)
93.(1)	94.(5)	95.(3)	96.(5)
97.(2)	98.(2)	99.(1)	100.(1)
101.(2)	102.(4)	103.(1)	104.(3)
105.(3)	106.(1)	107.(4)	108.(2)
109.(1)	110.(3)	111.(2)	112.(4)

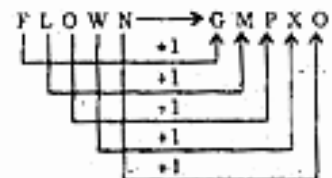
113.(5)	114.(2)	115.(3)	116.(1)
117.(4)	118.(1)	119.(2)	120.(3)
121.(2)	122.(4)	123.(1)	124.(3)
125.(1)	126.(3)	127.(2)	128.(4)
129.(3)	130.(2)	131.(4)	132.(1)
133.(2)	134.(1)	135.(2)	136.(1)
137.(4)	138.(2)	139.(1)	140.(2)
141.(4)	142.(3)	143.(1)	144.(3)
145.(3)	146.(2)	147.(4)	148.(5)
149.(1)	150.(2)	151.(3)	152.(3)
153.(1)	154.(4)	155.(3)	156.(2)
157.(2)	158.(3)	159.(1)	160.(4)
161.(1)	162.(1)	163.(2)	164.(1)
165.(4)	166.(3)	167.(2)	168.(2)
169.(3)	170.(2)	171.(2)	172.(5)
173.(2)	174.(1)	175.(5)	176.(5)
177.(5)	178.(4)	179.(2)	180.(3)
181.(2)	182.(1)	183.(4)	184.(5)
185.(4)	186.(1)	187.(2)	188.(4)
189.(3)	190.(4)	191.(3)	192.(5)
193.(1)	194.(2)	195.(1)	196.(2)
197.(5)	198.(1)	199.(2)	200.(5)

EXPLANATIONS

1. (3) Except Ceramic, all others are metals.
2. (3)



Similarly,



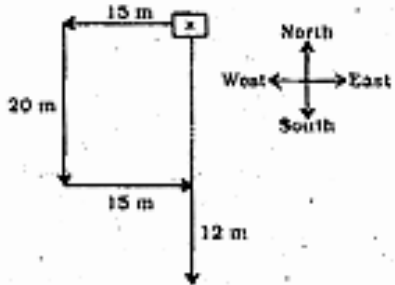
3. (5) According to Rajesh, Sanjay started working in May, June, July or August.

According to Vinod, Sanjay started working after May ...

According to Madan, Sanjay started working in the month having 30 days.

Therefore, the required month would be June.

4. (3)



Required distance = $(20 + 12)$ m = 30 metres

5. (3) Mamta's rank from the top = $8 + 5 = 13$ th

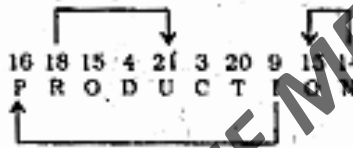
Mamta's rank from the bottom = $40 - 13 + 1 = 28$ th

6. (5)

1 2 3 4 5 6 7 8 9 10 11
C O N T A M I N A T E

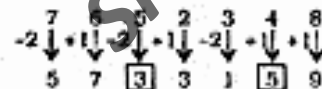
Meaningful Words
⇒ MATE, MEAT, TAME, TEAM

7. (4)



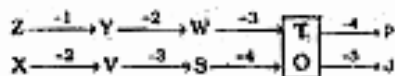
8. (2) Meaningful Word ⇒ BACK

9. (2)

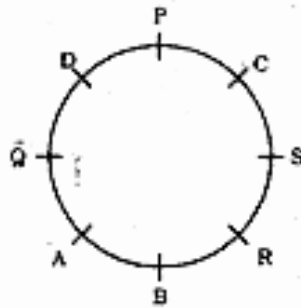


Required sum = $3 + 5 = 8$

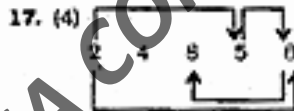
10. (1)



(11-15) : Sitting arrangement



- 11. (5) C sits between P and S.
- 12. (4) Four persons-B, R, S and C sit between A and P when counted in anti clockwise direction from A.
- 13. (4) B is sitting to the immediate right of A.
- 14. (3) Except in AB, in all others the first person is sitting to the immediate right of the second person. A is to the immediate left of B.
- 15. (1) S is third to the left of D
- 16. (4) Second to the right of the tenth from the left end means twelfth from the left end, i.e., 5.



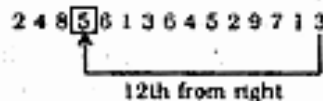
17. (2) Symbol Perfect Square

Such combinations are : 51 : 9

18. (3) Even Number Perfect Square

Such combinations are : 24 : 64

20. (2) According to question, the new sequence would be :



(21-25) :

- (i) All villages are cities → Universal Affirmative (A-type).
- (ii) Some black are blue → Particular Affirmative (I-type).

(iii) No blue are white ⇒ Universal Negative (E-type)

(iv) Some blue are not white ⇒ Particular Negative (O-type).

21. (4) Some black are blue.

No blue are white.

$I + E \Rightarrow O$ -type of Conclusion
"Some black are not white"

No blue are white.

Some white which are black are grey.

$E \rightarrow I \Rightarrow O$ -type of Conclusion
"Some black which are grey are not blue."

22. (4) All villages are cities.

All cities are countries.

$A + A \Rightarrow A$ -type of Conclusion
"All villages are countries".

All cities are countries.

All countries are towns.

$A + A \Rightarrow A$ -type of Conclusion
"All cities are towns".

All villages are countries.

All countries are towns.

$A + A \Rightarrow A$ -type of Conclusion.
"All villages are towns".

23. (1) Some books are poetry.

All poetry is philosophy.

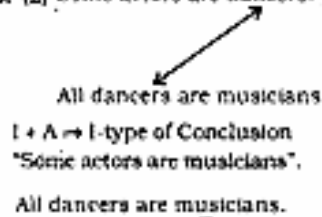
$I + A \Rightarrow I$ -type of Conclusion
"Some books are philosophy".
This is Conclusion I.

24. (1) Some students are adults.

All adults are workers.

$I + A \Rightarrow I$ -type of Conclusion.
"Some students are workers."
This is Conclusion I.

25. (2) Some actors are dancers.



A + E ⇒ E-type of Conclusion
 "No dancers are painters"
 Conclusion II is Converse of I1.

26. (5) 374 ⇒ 373 ; 659 ⇒ 658;
 821 ⇒ 820 ; 945 ⇒ 944;
 247 ⇒ 246

Numbers divisible by 2
 ⇒ 658, 820, 944, 246

27. (4) 374 ⇒ 734 ; 659 ⇒ 569 ;
 821 ⇒ 281 ; 945 ⇒ 495 ;
 247 ⇒ 427

Third lowest number
 ⇒ 495 ⇒ 945

28. (4) 374 ⇒ 347 ; 659 ⇒ 569 ;
 821 ⇒ 128 ; 945 ⇒ 459 ;
 247 ⇒ 247

Second highest number
 ⇒ 459 ⇒ 945

29. (2) 373; 658; 820; 944; 246

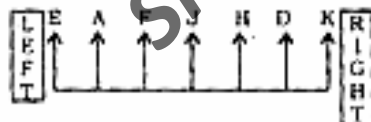
94 | 4

30. (3) 374 ⇒ 394 ⇒ 934;
 659 ⇒ 679 ⇒ 709;

821 ⇒ 841 ⇒ 481;
 945 ⇒ 965 ⇒ 695;

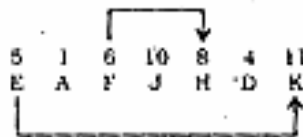
247 ⇒ 267 ⇒ 627;
 Largest number
 ⇒ 934 ⇒ 374

(31-35) : Sitting arrangement



31. (1) J is sitting exactly in the middle of the line.
 32. (2) Two persons - F and J - sit between A and H.
 33. (5) Except FH, in all others the first person is to the immediate left of the second person.
 34. (5) F is second to the left of H.

35. (3)



36. (4) P X U N C M
 ↓ ↓ ↓ ↓ ↓ ↓
 3 9 1 1 7 5.
 Condition (ii) is applicable.

37. (5) D E H A Z N
 ↓ ↓ ↓ ↓ ↓ ↓
 6 % 0 4 % 1
 Condition (iii) is applicable.

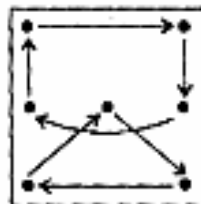
38. (1) M H C Y B G
 ↓ ↓ ↓ ↓ ↓ ↓
 5 0 7 5 8 7

39. (3) O M P C Z A
 ↓ ↓ ↓ ↓ ↓ ↓
 4 5 3 7 6 2
 Condition (i) is applicable.

40. (1) O U B N Y E
 ↓ ↓ ↓ ↓ ↓ ↓
 6 5 8 5 2
 Conditions (i) and (iii) are applicable.

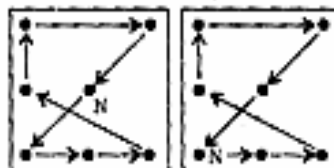
41. (1) From Problem Figure (4) to (5) the rightmost design moves to the leftmost position and all the designs are inverted. Similar changes would occur from Problem Figure (2) to (3).

42. (4) The following changes occur from Problem Figure (4) to (5)



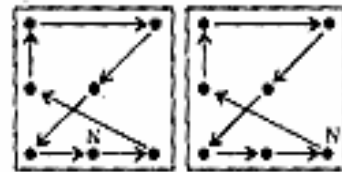
Similar changes would occur from Problem Figure (2) to (3).

43. (5) The following changes occur in the subsequent figures :
 (1) to (2) (2) to (3)



(3) to (4)

(4) to (5)



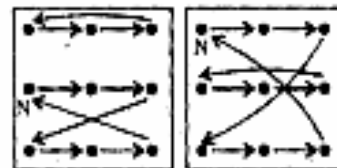
44. (2) From Problem Figure (1) to (2) the main design rotates through 90° clockwise and one star is added. Similar changes occur from Problem Figure (3) to (4)

45. (2) The line segment moves in clockwise direction and alternately one more line segment is added. From Problem Figure (1) to (2) the lower left design moves to the centre and the central design moves to the lower right position while all other designs move one step in anticlockwise direction. Similar changes occur from Problem Figure (3) to (4).

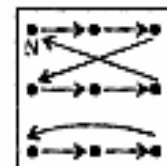
46. (3) In each subsequent figure the pre-existing leaflet rotates through 45° clockwise and from Problem Figure (1) to (2) half leaflet is deleted. From Problem Figure (3) to (4) one leaflet is added. Therefore, from Problem Figure (5) to Answer Figure one leaflet would be deleted.

47. (5) The following changes occur in the subsequent figures :

(1) to (2) (2) to (3)
 (4) to (5) (5) to (6)



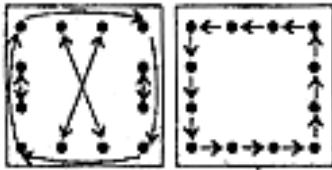
(3) to (4)



48. (3) In each subsequent figure the plane of designs rotates through 45° clockwise, the lower design moves to the top and the lower most design is replaced with a new design.

49. (4) The following changes occur in the subsequent figures :

- (1) to (2) (2) to (3)
(3) to (4) (4) to (5)
(5) to (6)



50. (5) In each subsequent figure the arrow rotates through 45° clockwise and diagonally opposite designs interchange positions, and one of these designs is replaced with a new design in a set order.

51. (5) $34.36 - 45.67 + 86.56 = ? + 37.96$

$$\Rightarrow 75.25 = ? + 37.96$$

$$\Rightarrow ? = 75.25 - 37.96 = 37.29$$

52. (2) $? = 800 \times \frac{77}{100} \times \frac{3}{11} = 168$

53. (4) $? = \frac{5 \times 6 \times 5 \times 6 \times 9 \times 6}{4 \times 6} = 2025$

54. (3) $(?)^2 = \frac{34.4 \times 5 \times 8}{16} + 8 = 136 + 8 = 144$

$$\therefore ? = \sqrt{144} = \pm 12$$

55. (2) $3353 - 7855 + 9498 = ? + 2233$

$$\Rightarrow 4996 = ? + 2233$$

$$\Rightarrow ? = 4996 - 2233 = 2763$$

56. (2) $\frac{350 \times ?}{100} = 48 + 6^2 = 84$

$$\therefore ? = \frac{84 \times 100}{350} = 24$$

57. (3) $? = \sqrt{\frac{12 \times 145}{8} - 34} = \sqrt{250 - 34}$

$$= \sqrt{324} = 18$$

58. (5) $?^2 = 169 - 125 - 26 + 7 = 25$

$$\therefore ? = \sqrt{25} = 5$$

59. (1) $? = 1 + \frac{2}{7} + 1 + \frac{1}{14} - 1 - \frac{3}{28}$

$$= 1 - \left(\frac{2}{7} + \frac{1}{14} - \frac{3}{28} \right)$$

$$= 1 + \left(\frac{8+2-3}{28} \right)$$

$$= 1 + \frac{7}{28} = 1 + \frac{1}{4} = 1\frac{1}{4}$$

60. (3) $431.44 - 44.63 = ? - 62.65$
 $\Rightarrow 386.81 = ? - 62.65$
 $\Rightarrow ? = 386.81 + 62.65 = 449.46$

61. (4) $\left(\frac{213 - 345}{8} \right) - \frac{?}{-4}$

$$\Rightarrow -\frac{132}{8} = \frac{?}{-4}$$

$$\Rightarrow \frac{?}{-4} = -16.5$$

$$\Rightarrow ? = (-4) \times (-16.5) = 66$$

62. (1) $\frac{45 \times 24}{12} - 35 = ? - 153$

$$\Rightarrow 90 - 35 + 153 = ?$$

$$\Rightarrow ? = 208$$

63. (3) $? = \frac{11}{17} - \frac{9}{34} + \frac{7}{17}$

$$= \frac{22 - 9 + 14}{34} = \frac{27}{34}$$

64. (5) $635 - 345 + 246 = ? + 225$

$$\Rightarrow 536 = ? + 225$$

$$\Rightarrow ? = 536 - 225 = 311$$

65. (2) $? = \frac{88}{29} - \frac{105}{51} + \frac{84}{33}$

$$= \frac{70}{9} - \frac{7}{9}$$

66. (5) $84 - 65 - 10 = \frac{?}{5}$

$$\Rightarrow 9 = \frac{?}{5}$$

$$\Rightarrow ? = 9 \times 5 = 45$$

67. (1) $6^4 + (6^2)^2 \times 6^2 = 6^{7+2}$

$$\Rightarrow 6^4 + 6^2 \times 6^2 = 6^{7+2}$$

$$\Rightarrow 6^{4+2} = 6^{7+2}$$

$$\Rightarrow 6^6 = 6^9$$

$$\Rightarrow ? - 2 = 1 \Rightarrow ? = 3$$

$$[(a^m)^n = a^{m \times n}; a^m \times a^n = a^{m+n}; a^m \div a^n = a^{m-n}]$$

68. (1) $? = \frac{0.4 \times 7.5}{0.6} \times 25 = 125$

69. (3) $\frac{? \times 66}{100} = 490 - 61 = 429$

$$\therefore ? = \frac{429 \times 100}{66} = 650$$

70. (2) $(?)^2 = \frac{92 \times 5}{10} + 3 = 46 + 3 = 49$

$$\therefore ? = \sqrt{49} = \pm 7$$

71. (1) $22 \times 12 + 134 + 43 = 132 + ?$

$$\Rightarrow 264 + 134 + 43 = 132 + ?$$

$$\Rightarrow 441 = 132 + ?$$

$$\Rightarrow ? = 441 - 132 = 309$$

72. (4) $? \times \frac{5}{4} \times \frac{7}{3} = 280$

$$\Rightarrow ? = \frac{280 \times 4 \times 3}{5 \times 7} = 96$$

73. (4) $? = \frac{5600 \times 9}{100} - \frac{340 \times 45}{100}$

$$= 504 - 153 = 351$$

74. (1) $? = 15.96 - 42.94 + 75.17 = 48.19$

75. (4) $? = 240 \times \frac{5}{12} \times \frac{7}{15} = 105$

76. (3) $\frac{5}{12} = 0.42; \frac{7}{13} = 0.54;$

$$\frac{4}{7} = 0.57; \frac{4}{15} = 0.27;$$

$$\frac{9}{14} = 0.64$$

\therefore The third largest fraction

$$= \frac{7}{13}$$

77. (2) Speed of car

$$= \frac{\text{Distance covered}}{\text{Time taken}}$$

$$= \frac{450}{6} = 75 \text{ kmph}$$

\therefore Speed of tractor = $75 \times \frac{2}{5}$

$$= 30 \text{ kmph}$$

\therefore Distance covered by tractor in 8 hours

$$= 30 \times 8 = 240 \text{ km.}$$

78. (3) Required average marks

$$= \frac{48 + 59 + 87 + 37 + 78 + 57}{6}$$

$$= \frac{366}{6} = 61$$

79. (1) Required value

$$= 1200 \times \frac{5}{8} \times \frac{74}{100} = 555$$

80. (3) Last S.P.

$$= 6500 \times \frac{100 + 24}{100} \times \frac{100 - 20}{100}$$

$$= 6500 \times \frac{124}{100} \times \frac{80}{100}$$

$$= \text{Rs. } 6448$$

$$\therefore \text{Loss} = 6500 - 6448$$

$$= \text{Rs. } 52$$

$$81. (4) \text{ Number of sacks} = \frac{1026}{114} = 9$$

$$82. (5) \text{ Man's monthly income}$$

$$= 38000 \times \frac{3}{4}$$

$$= \text{Rs. } 22800$$

$$\therefore \text{Man's annual income}$$

$$= \text{Rs. } (12 \times 22800)$$

$$= \text{Rs. } 273600$$

$$83. (4) \frac{3}{33} = \frac{3}{75}$$

$$\Rightarrow 75 \times \frac{3}{33} = 3 \times 33$$

$$\Rightarrow 75 \times \frac{2}{5} = 99$$

$$\Rightarrow 7 = 99$$

$$84. (1) \text{ Required value} = 12^3 - 22^2$$

$$= 1728 - 484 = 1244$$

$$85. (5) \text{ Tarun's present age} = 3x \text{ years}$$

$$\text{Varun's present age}$$

$$= 7x \text{ years}$$

$$7x + 4 = 39$$

$$\Rightarrow 7x = 39 - 4 = 35$$

$$\therefore x = \frac{35}{7} = 5$$

$$\therefore \text{Tarun's age 4 years ago} = 3x - 4$$

$$= 3 \times 5 - 4 = 11 \text{ years}$$

$$86. (3) \text{ Required distance}$$

$$= (12 \times 350 + 2 \times 500) \text{ metre}$$

$$= (4200 + 1000) \text{ metre}$$

$$= 5200 \text{ metre}$$

$$= 5.2 \text{ km}$$

$$87. (1) \text{ Simple interest}$$

$$= \frac{3}{20} \times 25000 = \text{Rs. } 3750$$

$$\therefore \text{Rate} = \frac{\text{S.I.} \times 100}{\text{Principal} \times \text{Time}}$$

$$= \frac{3750 \times 100}{25000 \times 3} = 5\% \text{ per annum}$$

Quicker Approach

$$\text{S.I.} = \frac{3}{100} \times \text{Principal}$$

$$\therefore \frac{\text{S.I.}}{\text{Principal}} = \frac{3}{20}$$

$$\therefore \text{Rate} = \frac{\text{S.I.}}{\text{Principal}} \times \frac{100}{\text{Time}}$$

$$= \frac{3}{20} \times \frac{100}{3} = 5\% \text{ per annum}$$

$$88. (5) x + x + 2 + x + 4 + x + 6 + x + 8 = 170$$

$$\Rightarrow 5x + 20 = 170$$

$$\Rightarrow 5x = 170 - 20 = 150$$

$$\therefore x = \frac{150}{5} = 30$$

$$\therefore \text{Second largest number}$$

$$= x + 6 = 36$$

$$\therefore \text{Required Sum} = 36 + 30^2$$

$$= 36 + 900 = 936$$

$$89. (5) \text{ Breadth of rectangle}$$

$$= 25 \times \frac{1}{5} - 1 = 4 \text{ cm}$$

$$\therefore \text{Area of rectangle}$$

$$= \text{length} \times \text{breadth}$$

$$= 25 \times 4 = 100 \text{ sq.cm.}$$

$$\therefore \text{Area of square} = 4 \times 100$$

$$= 400 \text{ sq. cm.}$$

$$\therefore \text{Side of square} = \sqrt{400} = 20 \text{ cm.}$$

$$\therefore \text{Perimeter of square} = 4 \times \text{side}$$

$$= 4 \times 20 = 80 \text{ cm.}$$

$$90. (2) \text{ Sohan's total marks}$$

$$= 54 + 65 + 89 + 60 + 68$$

$$= 345$$

$$\therefore \text{Required percent}$$

$$= \frac{345}{500} \times 100 = 69$$

$$91. (4) M_1 D_1 = M_2 D_2$$

$$\Rightarrow 8 \times 15 = 12 \times D_2$$

$$\Rightarrow D_2 = \frac{8 \times 15}{12} = 10 \text{ hours}$$

$$92. (4) \text{ Diameter of circle}$$

$$= 24 - 10 = 14 \text{ cm}$$

$$\therefore \text{Radius} = 7 \text{ cm.}$$

$$\therefore \text{Area of circle} = \pi r^2$$

$$= \frac{22}{7} \times 7 \times 7 = 154 \text{ sq. cm.}$$

$$93. (1) \text{ The pattern of the number series is:}$$

$$9 + 1 \times 11 = 9 + 11 = 20$$

$$20 + 2 \times 11 = 20 + 22 = 42$$

$$42 + 3 \times 11 = 42 + 33 = 75$$

$$75 + 4 \times 11 = 75 + 44 = 119$$

$$119 + 5 \times 11 = 119 + 55 = \boxed{174}$$

$$94. (5) \text{ The pattern of the number series is:}$$

$$23 + 9 = 32$$

$$32 + 13 (= 9 + 4) = 45$$

$$45 + 17 (= 13 + 4) = 62$$

$$62 + 21 (= 17 + 4) = 83$$

$$83 + 25 (= 21 + 4) = \boxed{108}$$

$$95. (3) \text{ The pattern of the number series is:}$$

$$17 + 1 \times 6 = 23$$

$$23 + 2 \times 6 = 35$$

$$35 + 4 \times 6 = 35 + 24 = 59$$

$$59 + 8 \times 6 = 59 + 48 = 107.$$

$$107 + 16 \times 6 = 107 + 96 = \boxed{203}$$

$$96. (5) \text{ L.H.S.} = -[(\sqrt{361} - \sqrt{49})]$$

$$= -(19 - 7) = -12$$

$$\text{R.H.S.} = \sqrt{144} = 12$$

$$97. (2) \text{ L.H.S.} = (132 - 18 + 42)$$

$$= 156$$

$$\text{R.H.S.} = 100 \times 2 - 44$$

$$= 200 - 44 = 156$$

$$98. (2) \text{ L.H.S.} = (25 - 4) \times 6$$

$$= 21 \times 6 = 126$$

$$\text{R.H.S.} = (36 \times 4 - 18)$$

$$= 144 - 18 = 126$$

$$99. (1) \text{ L.H.S.}$$

$$= \left(\frac{63}{7} + \frac{44}{11} \right) = 9 + 4 = 13$$

$$\text{R.H.S.} = \pm (91 \div 7) = \pm 13$$

$$100. (1) \text{ L.H.S.} = 42 + 15 = 57$$

$$\text{R.H.S.} = \sqrt{289} + 32$$

$$= 17 + 32 = 49$$

$$136. (1) + 2 \times 6 \oplus 4$$

$$\downarrow \downarrow \downarrow \downarrow \downarrow \downarrow$$

$$J \ K \ W \ E \ R \ A$$

$$137. (4) \& \ \$ \ \% \ 4 \ 6 \ 5$$

$$\downarrow \downarrow \downarrow \downarrow \downarrow \downarrow$$

$$D \ Z \ P \ A \ E \ U$$

$$138. (2) \& \ 9 \ \& \ \% \ 3 \ 8$$

$$\downarrow \downarrow \downarrow \downarrow \downarrow \downarrow$$

$$Z \ C \ D \ P \ B \ N$$

139. (1) ⓐ ⓑ ⓓ ⓔ ⓕ ⓖ
↓ ↓ ↓ ↓ ↓ ↓
R Z B D W U

140. (2) 3 6 5 8 + 7
↓ ↓ ↓ ↓ ↓ ↓
B E U N J L

141. (4) Alphabetical order of words :

(3) Sneeze

↓

(5) Snide

↓

(4) Sniff

↓

(2) Snitch

↓

(1) Snob

142. (3) Alphabetical order of words :

(2) Scribble

↓

(5) Scribe

↓

(3) Scrim

↓

(1) Sctip

↓

(4) Scroll

143. (1) Alphabetical order of words :

(5) Original

↓

(2) Oriole

↓

(1) Orison

↓

(3) Ormolu

↓

(4) Ormolu

144. (3) Alphabetical order of words :

(4) Hurl

↓

(1) Hurrah

↓

(3) Hurry

↓

(2) Hush

↓

(5) Hurt

145. (3) Alphabetical order of words :

(5) Bone

↓

(1) Bongo

↓

(3) Bonhomie

↓

(2) Bontio

↓

(4) Bonnet

146. (2) Health and Science

147. (4) Economics

148. (5) Miscellaneous

149. (1) Sports

150. (2) Health and Science

151. (3) He sent her a red ruby.

152. (3) She had found cow dung in the bag.

153. (1) Humans discovered the stones in their search for the lost ruby.

154. (4) The temptation of the smell of food.

155. (3) The crow was considered to be an auspicious bird.

156. (2) The ruby fell out of his pocket.

157. (2) The crow was burned black by the scorching gaze of the angry Sun.

158. (3) The Sun and the Princess

159. (1) To deliver the gift to the princess.

160. (4) That the Sun did not love her anymore.

161. (1) The meaning of the word **Token (Noun)** as used in the passage is : something that is a symbol of a feeling, a fact, an event ; expression ; mark.

Look at the sentence :

Please accept this gift as a token of our gratitude.

162. (1) The meaning of the word **Defly (Adverb)** as used in the passage is : skillfully and quickly.

Look at the sentence :

I threw him a towel which he defly caught.

163. (2) The meaning of the word **Auspicious (Adjective)** as used in the passage is : lucky ; bringing good luck.

164. (1) The meaning of the word **Scorching (Adjective)** as used

in the passage is : very hot, baking its antonym should be cool.

165. (4) The meaning of the word **Furious (Adjective)** as used in the passage is very angry.

Look at the sentence :

He was absolutely furious at having been deceived.

Its antonym should be calm.

166. (3) The sentence shows past time. Hence, we found that (Past Simple) should be used here.

167. (2) Here, the subject (poor people) is plural. Hence, have no money (Plural Verb) should be used.

168. (2) Here, someone who is interested should be used.

169. (3) Here, in the performances should be used.

Look at the sentence :

He didn't participate in the discussion.

170. (2) Here, Past Simple i.e. I got my should be used.

171. (2) Here, Past Simple i.e. introduced me ... should be used.

172. (5) No Error

173. (2) Here, Gerund i.e. buying books should be used.

174. (1) Here, By the time ... should be used

175. (5) No Error 176. (5) with

177. (5) considering

178. (4) attention 179. (2) except

180. (3) little, before

181. (2) The correct spelling is : Receipt.

182. (1) The correct spelling is : Justice.

183. (4) The correct spelling is : Hunged/Hung

184. (5) All Correct

185. (4) The correct spelling is : Manual

186. (1) B 187. (2) D

188. (4) A 189. (3) C

190. (4) E 191. (3) banks

192. (5) routine 193. (1) prowl

194. (2) last 195. (1) captive

196. (2) dived

197. (5) threatened 198. (1) advised

199. (2) enraged

200. (5) promptly