



PNB Clerk/SWO Written Exam Sample Questions

SAMPLE QUESTIONS

A) OBJECTIVE TESTS

Below are given some sample questions for the objective type tests. The types of questions are only illustrative and not exhaustive. In actual examination you may find questions on some or all of these types and also questions on the types not mentioned here.

TEST I : REASONING ABILITY

This test is to see how well you can think. It contains questions of various kinds. Here are some sample questions.

Directions : In each of the following questions, there is a group of letters or words given. Four of the five are alike in a certain way, while one is different. Find out the one which is different.

Q.1. (1) black (2) red (3) green (4) yellow (5) paint

Of the five, 'black', 'red', 'green', and 'yellow' form a group as they are names of colours. 'Paint' is not the name of a colour. Therefore (5) is the answer.

Now try to solve the following question.

Q.2. (1) XZ (2) MN (3) PQ (4) BC (5) ST

Following are the questions based on analogy.

Q.3. "Foot" is related to "Man" in the same way as "Hoof" is related to _____

(1) Leg (2) Horse (3) Dog (4) Boy (5) Shoe

In the above example, with which one of the five, "Hoof" has the same relationship as "Foot" has to "Man" ? The answer is "Horse", which is answer number (2). Now try the following questions.

Q.4. "Day" is related to "Night" in the same way as "Kind" is related to _____

(1) Cruel (2) Bright (3) Dark
(4) Generous (5) Gratitude

Now try the following questions.

Q.5. If the letters in the word TOPS can be rearranged to form a meaningful word beginning with O, the last letter of that word is your answer. If more than one such word can be formed, M is the answer and if no such word can be formed, X is the answer.

(1) T (2) P (3) M (4) S (5) X

Q.6. If A" B means add B to A, A' B means subtract B from A, A # B means divide A by B and A*

B means multiply A by B, which of the following gives the average sales of two days where S1 and S2 are the sales of the first and second day respectively ?

- (1) $(S1 + S2) \div 2$ (2) $2 \times (S1 + S2)$
(3) $(S1 + S2) \times 2$ (4) $(S2 + S1) \div 2$
(5) $(S1 \times S2) \div (S1 + S2)$

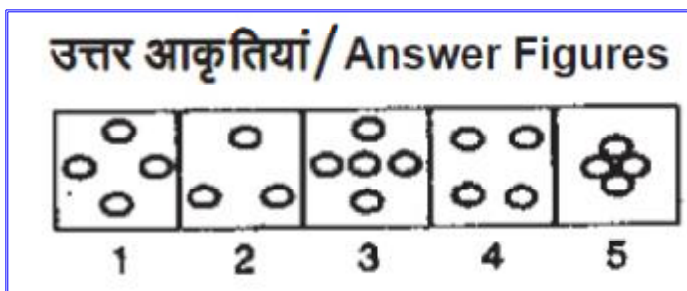
There may also be problems in the form of figures, designs and drawings. These may be of three types :

1. Analogies 2. Classification and 3. Series

1. Analogies :

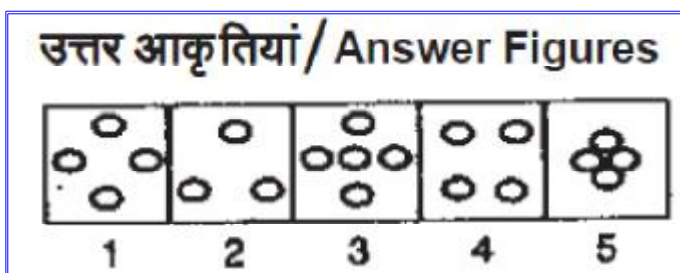
In these questions, there are two sets of figures. the 'Problem Figures' and the 'Answer Figures'. The Problem Figures are presented in two units. The first unit contains two figures and the second unit contains one figure and a question mark in place of the fourth figure. You have to find out which one of the Answer Figures should be in place of the question mark.

Study the following questions based on Analogies



Look at the first two Problem Figures. The second figure is related to the first figure in a certain way. The first figure is a square. In the second figure, the square has been bisected by a vertical line and the right half has been darkened.

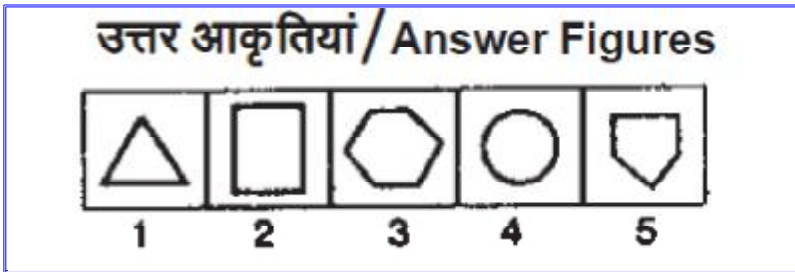
The third and fourth figures should have the same relationship as the first and the second have. The third figure is a circle, so in the fourth figure, the circle should be bisected by a vertical line and the right half should be darkened. Answer Figure 5 is related to the third Problem Figure in this way. Therefore the answer is "5"



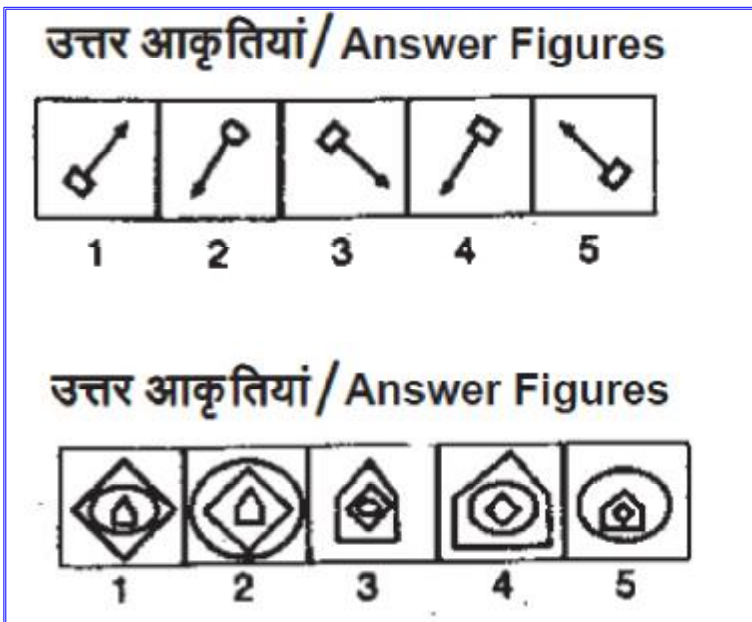
Study the first and the second figures in the Problem Figures. The first figure is a darkened square and in the second figure, there are four squares, not darkened, arranged in a particular way. That means the elements in the second figure are four times the elements in the first figure and are not darkened. In addition, the four squares are arranged in a specific way and are not touching one another.

The third figure is a darkened circle. Therefore, the fourth figure should have four circles which are not darkened, arranged in the same way as in the second figure. Now look at the Answer Figures. You will find that figure 1 consists of four circles which are not darkened arranged in a similar

way. Therefore, the answer is “1”.



Study the first and the second figures in the first unit of the Problem Figures. The first figure is made up of four lines and the second figure is made up of five lines. That means the second figure has one line more than the first figure. The third figure in the second unit has five lines. Therefore, the fourth figure should have six lines i.e. one more than the third. Now look at the Answer Figures. You will find that figure 3 is made up of six lines. Therefore, the answer is “3”.



TEST II : ENGLISH LANGUAGE

This is a test to see how well you ‘know’ English. Your English language ability would be tested through questions on grammar, vocabulary, sentence completion, synonyms, antonyms, comprehension of a passage, etc. Study and answer the sample questions given below. Please remember, in the test paper there may be questions of several other types also

Direction : Pick out the most appropriate word from amongst the words given below each sentence to complete it meaningfully.

Q.21. He quickly glanced the book to find what it said about the Indian economy.

(1) at (2) through (3) in (4) to (5) over

The correct answer is “through” which is answer No. 2.

Q.22. The counsel urged the court to down the obnoxious law.

(1) enact (2) enforce (3) cancel (4) strike (5) declare

Q.23. The local official the Minister of the situation.

(1) explained (2) warned (3) apprised (4) told (5) intimidated

Directions : Read each sentence given below to find out whether there is any grammatical error in it. The error, if any, will be in one part of the sentence. The number of that part of the sentence is your answer. If there is no error, the answer is '5'.

(Ignore errors of punctuations, if any)

24.I am twenty / two years old / when I first / joined the bank. No error

(1) (2) (3) (4) (5)

The error is in (1). Therefore the answer is '1'.

Q.25. To the Hindus / the Ganga is / holier than / any other river. No error

(1) (2) (3) (4) (5)

In this question, there is no error; Hence the right answer to this question is '5'.

Now attempt the following question

Q.26. Of all the teachers / in our school / our class teacher / were very strict. No error

(1) (2) (3) (4) (5)

Directions : In each of the following questions select from amongst the five alternatives, the word nearest in meaning to the word given in capitals.

Q.27. CENTENARY

(1) a guard (2) a hundred years (3) a very old man (4) hundred runs (5) hundredth anniversary

Q.28. TRIUMPH

(1) conquer (2) smash (3) earn (4) brave (5) capture

Directions : In each of the following questions, select from amongst the five alternatives, the word most opposite in meaning of the word given in capitals.

Q.29. LIVELY

(1) simple
(2) weak
(3) dull
(4) angry
(5) moron

Q.30. INADVERTENT

(1) adequate (2) available (3) sluggish (4) negligent (5) intentional

In addition to the above questions, there will be a passage

in English for comprehension. You will be asked questions based on the passage. There may be some other types of questions also.

TEST III : QUANTITATIVE APTITUDE : This test is to measure how fast and accurate you

are in dealing with numbers.

Directions : In each of the following questions one number is missing. The place where the number is missing is shown by a question mark (?). You have to find out which one of the answers shown against 1, 2, 3 and 4 can replace the question mark. If none of these four can replace the question mark, you will indicate (5) i.e. 'None of these' as your answer

Q.31. $42 + 73 + 137 = ?$

- (1) 352 (2) 252 (3) 242
(4) 142 (5) None of these

Q.32. $20 \times 1/2 = ?$

- (1) 4 (2) 5 (3) 12
(4) 20 (5) None of these

The correct answer for Q.32 is 10. But none of the 1, 2, 3, or 4 shows this answer. Therefore your answer is 5. Some of the questions may require arithmetical reasoning. For example :

Q.33. At 10 paise each, how many paise will 6 lemons cost ?

- (1) 6 (2) 10 (3) 60 (4) 61 (5) 610

Q.34. Which of the following can be exact multiple of 4 ?

- (1) 27114 (2) 58204 (3) 48402
(4) 32286 (5) None of these

Q.35. If the profit made by selling a pen for Rs.10 is as much as its cost, what is the cost price of the pen ?

- (1) Rs.3/- (2) Rs.5/- (3) Rs.10/-
(4) Rs.20/- (5) None of these

TEST IV : MARKETING AND COMPUTER

Q.36. Pick the odd man out.

- (1) Monitor (2) Keyboard (3) Floppy drive
(4) Windows (5) Hard-disk drive

Q.37. The full form of LAN is _____

- (1) Local Access Network
(2) Local Area Network
(3) Long Area Node
(4) Local Area Node
(5) None of these

Q.38. The concept of Marketing can be expressed in following way -

- (1) make what sells than selling what you make
(2) find wants and fill them
(3) love the customer and not the product
(4) (1) and (2) only
(5) none of these