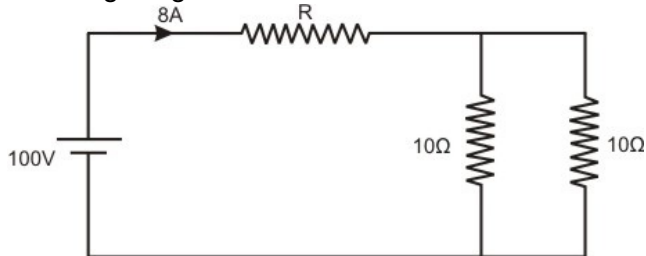




Electrical Engineering - 2005

Full Paper

1. In the figure given below the value of R is

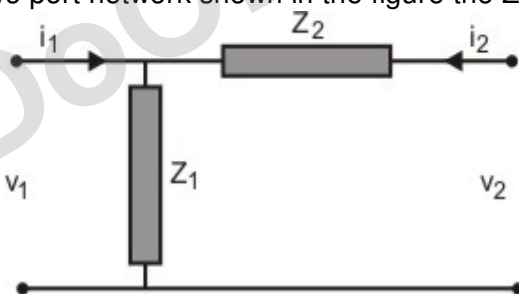


- 1) 2.5 Ω
- 2) 5.0 Ω
- 3) 7.5 Ω
- 4) 10.0 Ω

2. The RMS value of the voltage $u(t) = 3 + 4\cos(3t)$ is

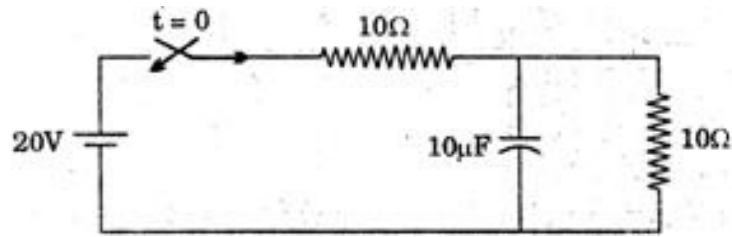
- 1) $\sqrt{17}$ V
- 2) 5 V
- 3) 7 V
- 4) $(3 + 2\sqrt{2})$ V

3. For the two port network shown in the figure the Z-matrix is given by



- 1) $\begin{bmatrix} Z_1 & Z_1 + Z_2 \\ Z_1 + Z_2 & Z_2 \end{bmatrix}$
- 2) $\begin{bmatrix} Z_1 & Z_1 \\ Z_1 + Z_2 & Z_2 \end{bmatrix}$
- 3) $\begin{bmatrix} Z_1 & Z_2 \\ Z_2 & Z_1 + Z_2 \end{bmatrix}$
- 4) $\begin{bmatrix} Z_1 & Z_1 \\ Z_1 & Z_1 + Z_2 \end{bmatrix}$

4. In the figure given below, the initial capacitor voltage is zero. The switch is closed at $t = 0$. The final steady-state voltage across the capacitor is



- 1) 20 V
- 2) 10 V
- 3) 5 V
- 4) 0 V

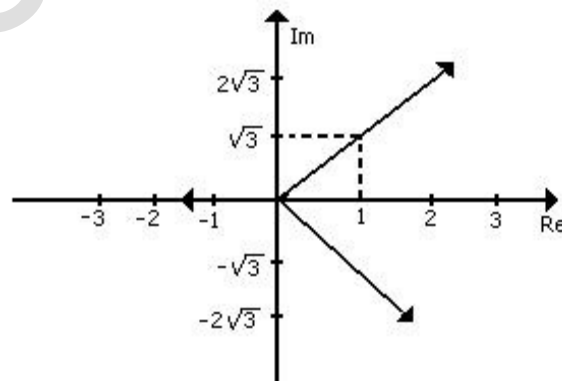
5. If \vec{E} is the electric field intensity, $\nabla(\nabla \times \vec{E})$ is equal to

- 1) \vec{E}
- 2) $|\vec{E}|$
- 3) null vector
- 4) zero

6. A system with zero initial conditions has the closed loop transfer function. $T(s) = (s^2 + 4)/((s + 1)(s + 4))$. The system output is zero at the frequency

- 1) 0.5 rad/sec
- 2) 1 rad/sec
- 3) 2 rad/sec
- 4) 4 rad/sec

7. Figure shows the root locus plot (location of poles not given) of a third order system whose open loop transfer function is



- 1) K/s^3
- 2) $K/(s^2(s + 1))$
- 3) $K/(s(s^2 + 1))$
- 4) $K/(s(s^2 - 1))$

8. The gain margin of a unity feedback control system with the open loop transfer function $G(s) = (s + 1)/s^2$ is

- 1) 0 2) $1/\sqrt{2}$ 3) $\sqrt{2}$ 4) ∞

9. In the matrix equation $Px = q$, which of the following is a necessary condition for the existence of at least one solution for the unknown vector x :

- 1) Augmented matrix $[Pq]$ must have the same rank as matrix P
- 2) Vector q must have only non-zero elements
- 3) Matrix P must be singular
- 4) Matrix P must be square

10. If P and Q are two random events, then the following is TRUE

- 1) Independence of P and Q implies that probability $(P \cap Q) = 0$
- 2) Probability $(P \cup Q) \geq$ Probability $(P) +$ Probability (Q)
- 3) If P and Q are mutually exclusive, then they must be independent
- 4) Probability $(P \cap Q) \leq$ Probability (P)

11. If $S = \int_1^{\infty} x^{-3} dx$, then S has the value

- 1) $(-1)/3$
- 2) $1/4$
- 3) $1/2$
- 4) 1

12. The solution of the first order differential equation $x(t) = -3x(t)$, $x(0) = x_0$ is

- 1) $x(t) = x_0 e^{-3t}$
- 2) $x(t) = x_0 e^{-3}$
- 3) $x(t) = x_0 e^{-1/3}$
- 4) $x(t) = x_0 e^{-1}$

13. The equivalent circuit of a transformer has leakage reactances X_1 , X'_2 and magnetizing reactance X_M . Their magnitudes satisfy

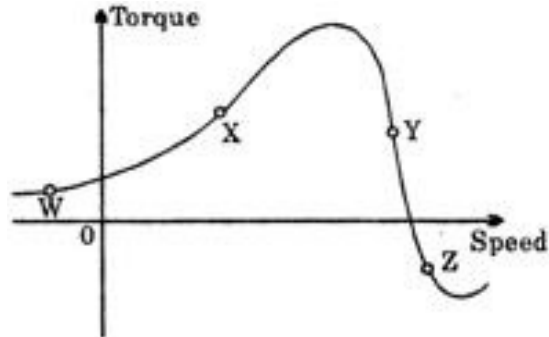
- 1) $X_1 \gg X'_2 \gg X_M$
- 2) $X_1 \ll X'_2 \ll X_M$
- 3) $X_1 \approx X'_2 \gg X_M$
- 4) $X_1 \approx X'_2 \gg X_M$

14. Which three-phase connection can be used in a transformer to introduce a phase difference of 30° between its output and corresponding input time voltages

- 1) Star - Star
- 2) Star - Delta

- 3) Delta - Delta
- 4) Delta - Zigzag

15. On the torque/speed curve of induction motor shown in the figure four points of operation are marked as W, X, Y and Z. Which one of them represents the operation at a slip greater than 1?



- 1) W
- 2) X
- 3) Y
- 4) Z

16. For an induction motor, operating at a slip s , the ratio of gross power output to air gap power is equal to

- 1) $(1 - s)^2$
- 2) $(1 - s)$
- 3) $\sqrt{1 - s}$
- 4) $(1 - \sqrt{s})$

17. The p.u. parameters for a 500 MVA machine on its own base are :
inertia, $M = 20$ p.u. ; reactance, $X = 2$ p.u.

The p.u. values of inertia and reactance on 100 MVA common base, respectively, are

- 1) 4, 0.4
- 2) 100, 10
- 3) 4, 10
- 4) 100, 0.4

18. An 800 kV transmission line has a maximum power transfer capacity of P . If it is operated at 400 kV with the series reactance unchanged, then new maximum power transfer capacity is approximately

- 1) P
- 2) $2P$
- 3) $P/2$
- 4) $P/4$

19. The insulation strength of an EHV transmission line is mainly governed by

- 1) load power factor
- 2) switching over-voltages
- 3) harmonics
- 4) corona

20. High Voltage DC (HVDC) transmission is mainly used for

- 1) bulk power transmission over very long distances
- 2) inter-connecting two systems with the same nominal frequency
- 3) eliminating reactive power requirement in the operation
- 4) minimizing harmonics at the converter stations

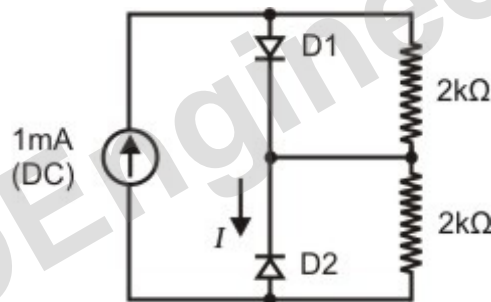
21. The Q - meter works on the principle of

- 1) mutual inductance
- 2) self inductance
- 3) series resonance
- 4) parallel resonance

22. A PMMC voltmeter is connected across a series combination of a DC voltage source $V_1 = 2 \text{ V}$ and an AC voltage source $V_2(t) = 3 \sin(4t) \text{ V}$. The meter reads

- 1) 2 V
- 2) 5 V
- 3) $(2 + \sqrt{3}/2) \text{ V}$
- 4) $(\sqrt{17}/2) \text{ V}$

23. Assume that D_1 and D_2 in figure are ideal diodes. The value of current I is

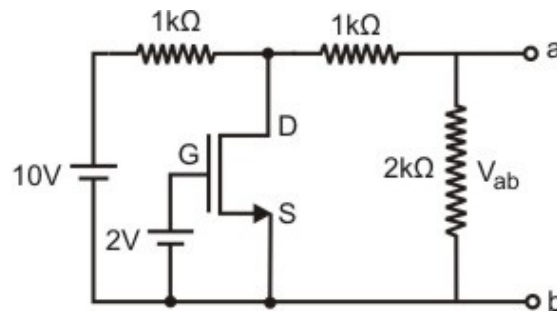


- 1) 0 mA
- 2) 0.5 mA
- 3) 1 mA
- 4) 2 mA

24. The 8085 assembly language instruction that stores the content of H and L registers into the memory locations 2050_H and 2051_H , respectively, is

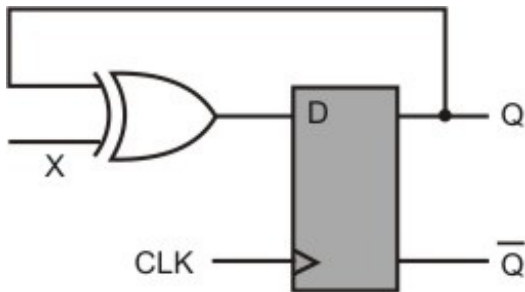
- 1) SPHL 2050_H
- 2) SPHL 2051_H
- 3) SHLD 2050_H
- 4) STAX 2050_H

25. Assume that the N-channel MOSFET shown in the figure is ideal, and that its threshold voltage is + 1.0 V. the voltage V_{ab} between nodes a and b is



- 1) 5 V
- 2) 2 V
- 3) 1 V
- 4) 0 V

26. The digital circuit shown in the figure works as a



- 1) JK flip-flop
- 2) Clocked RS flip-flop
- 3) T flip-flop
- 4) Ring counter

27. A digital-to-analog converter with a full-scale output voltage of 3.5 V has a resolution close to 14 mV. Its bit size is

- 1) 4
- 2) 8
- 3) 16
- 4) 32

28. The conduction loss versus device current characteristic of a power MOSFET is best approximated by

- 1) a parabola
- 2) a straight line
- 3) a rectangular hyperbola
- 4) an exponentially decaying function

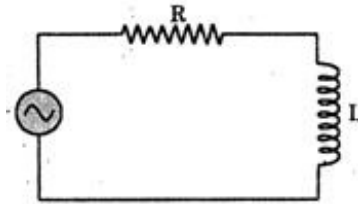
29. A three-phase diode bridge rectifier is fed from a 400 V RMS, 50 Hz, three-phase AC source. If the load is purely resistive, then peak instantaneous output voltage is equal to

- 1) 400 V
- 2) $400\sqrt{2}$ V
- 3) $400\sqrt{(2/3)}$ V
- 4) $(400\sqrt{3})$ V

30. The output voltage waveform of a three-phase square-wave inverter contains

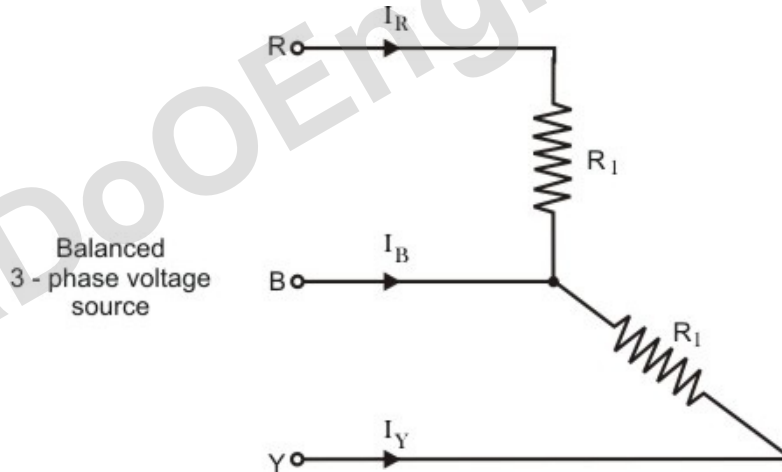
- 1) only even harmonics
- 2) both odd and even harmonics
- 3) only odd harmonics
- 4) only triple harmonics

31. The RL circuit of the figure is fed from a constant magnitude, variable frequency sinusoidal voltage source v_{IN} . At 100 Hz, the R and L elements each have a voltage drop u_{RMS} . If the frequency of the source is changed to 50Hz, then new voltage drop across R is



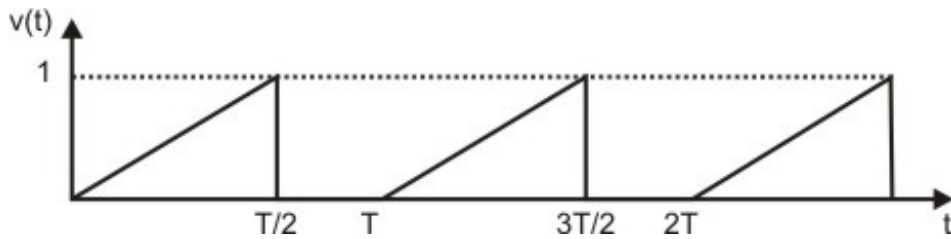
- 1) $\sqrt{5/8} u_{RMS}$
- 2) $\sqrt{2/3} u_{RMS}$
- 3) $\sqrt{8/5} u_{RMS}$
- 4) $\sqrt{3/2} u_{RMS}$

32. For the three-phase circuit shown in the figure the ratio of the currents $I_R : I_Y : I_B$ is given by



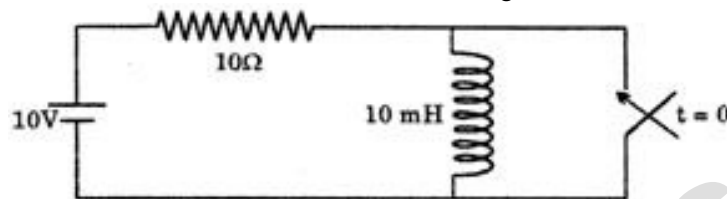
- 1) $1 : 1 : \sqrt{3}$
- 2) $1 : 1 : 2$
- 3) $1 : 1 : 0$
- 4) $1 : 1 : \sqrt{3}/2$

33. For the triangular wave form shown in the figure, the RMS value of the voltage is equal to



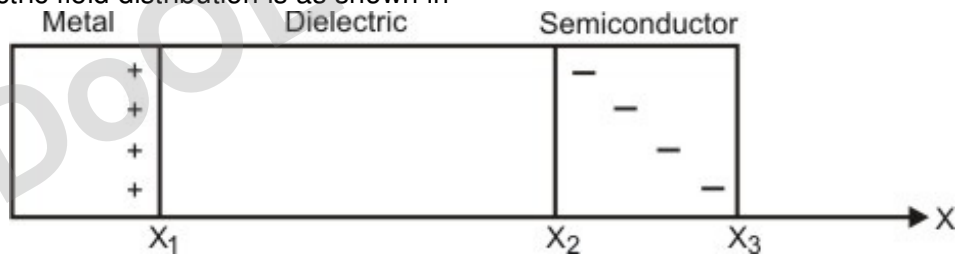
- 1) $\sqrt{1/6}$
- 2) $\sqrt{1/3}$
- 3) $1/3$
- 4) $\sqrt{2/3}$

34. The circuit shown in the figure is in steady state, when the switch is closed at $t = 0$. Assuming that the inductance is ideal, the current through the inductor at $t = 0^+$ equals



- 1) 0 A
- 2) 0.5 A
- 3) 1 A
- 4) 2 A

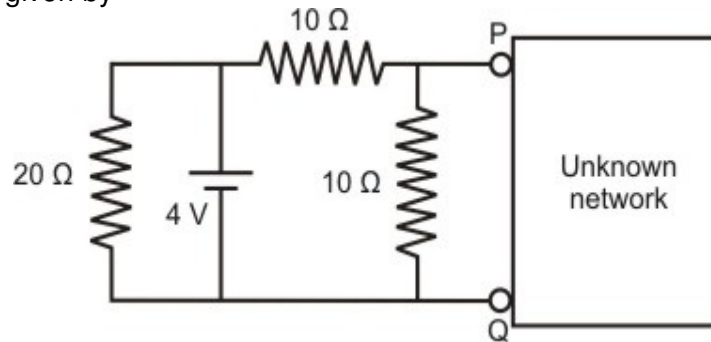
35. The charge distribution in a metal-dielectric semiconductor specimen is shown in the figure. The negative charge density decreases linearly in the semiconductor as shown. The electric field distribution is as shown in



- 1)
- 2)
- 3)
- 4)

36. In the given figure, the Thevenin's equivalent pair (voltage, impedance), as seen at the

terminals P-Q, is given by

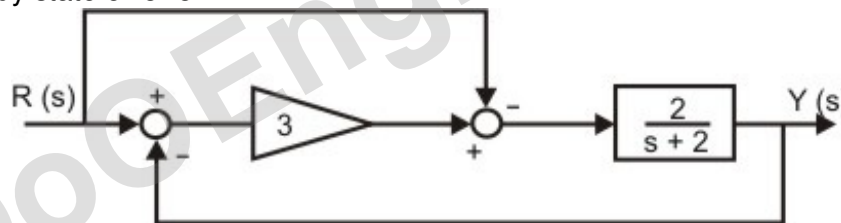


- 1) (2V, 5 Ω)
- 2) (2 V, 7.5 Ω)
- 3) (4V, 5 Ω)
- 4) (4 V, 7.5 Ω)

37. A unity feedback system, having an open loop gain $G(s)H(s) = \frac{K(1 - s)}{(1 + s)}$, becomes stable when

- 1) $|K| > 1$
- 2) $K > 1$
- 3) $|K| < 1$
- 4) $K < -1$

38. When subjected to a unit step input, the closed loop control system shown in the figure will have a steady state error of

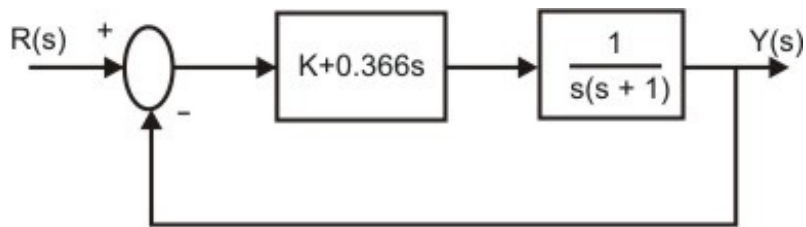


- 1) -1.0
- 2) -0.5
- 3) 0
- 4) 0.5

39. In the $GH(s)$ plane, the Nyquist plot of the loop transfer function $G(s)H(s) = \frac{e^{-0.25s}}{s}$ passes through the negative real axis at the point

- 1) (-0.25, j0)
- 2) (-0.5, j0)
- 3) (-1, j0)
- 4) (-2, j0)

40. If the compensated system shown in the figure has a phase margin of 60° at the crossover frequency of 1 rad/sec, then value of the gain K is



- 1) 0.366
- 2) 0.732
- 3) 1.366
- 4) 2.738

41. For the matrix $P = \begin{bmatrix} 3 & -2 & 2 \\ 0 & -2 & 1 \\ 0 & 0 & 1 \end{bmatrix}$, one of the eigen values is equal to -2. Which of the following is an eigen vector?

- 1) $\begin{bmatrix} 3 \\ -2 \\ 1 \end{bmatrix}$
- 2) $\begin{bmatrix} -3 \\ 2 \\ -1 \end{bmatrix}$
- 3) $\begin{bmatrix} 1 \\ -2 \\ 3 \end{bmatrix}$
- 4) $\begin{bmatrix} 2 \\ 5 \\ 0 \end{bmatrix}$

42. If $R = \begin{bmatrix} 1 & 0 & -1 \\ 2 & 1 & -1 \\ 2 & 3 & 2 \end{bmatrix}$, then top row of R^{-1} is

- 1) [5 6 4]
- 2) [5 -3 1]
- 3) [2 0 -1]
- 4) [2 -1 1/2]

43. A fair coin is tossed three times in succession. If the first toss produces a head, then the probability of getting exactly two heads in three tosses is

- 1) 1/8
- 2) 1/2
- 3) 3/8
- 4) 3/4

44. For the function $f(x) = x^2 e^{-x}$, the maximum occurs when x is equal to

- 1) 2
- 2) 1
- 3) 0
- 4) -1

45. For the scalar field $u = (x^2/2) + (y^2/3)$, magnitude of the gradient at the point (1, 3) is

- 1) $\sqrt{13/9}$

- 2) $\sqrt{9/2}$
- 3) $\sqrt{5}$
- 4) $9/2$

46. For the equation $\ddot{x}(t) + 3\dot{x}(t) + 2x(t) = 5$, the solution $x(t)$ approaches which of the following values as $t \rightarrow \infty$?

- 1) 0
- 2) $5/2$
- 3) 5
- 4) 10

47. The Laplace transform of a function $f(t)$ is $F(s) = (5s^2 + 23s + 6)/(s^2 + 2s + 2)$. As $t \rightarrow \infty$, $f(t)$ approaches ?

- 1) 3
- 2) 5
- 3) $17/2$
- 4) ∞

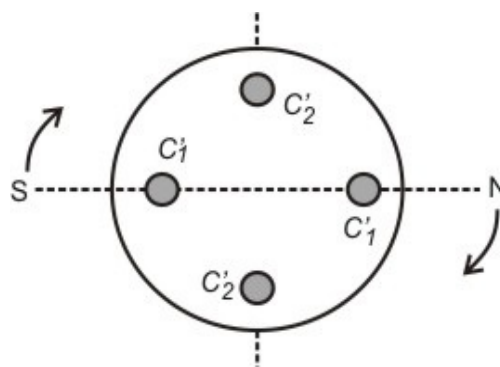
48. The Fourier series for the function $f(x) = \sin^2 x$ is

- 1) $\sin x + \sin 2x$
- 2) $1 - \cos 2x$
- 3) $\sin 2x + \cos 2x$
- 4) $0.5 - 0.5 \cos 2x$

49. If $u(t)$ is the unit step and $\delta(t)$ is the unit impulse function, the inverse z-transform of $F(z) = 1/(z + 1)$ for $k > 0$ is

- 1) $(-1)^k \delta(k)$
- 2) $\delta(k) - (-1)^k$
- 3) $(-1)^k u(k)$
- 4) $u(k) - (-1)^k$

50. Two magnetic poles revolve around a stationary armature carrying two coils ($c_1 - c_1', c_2 - c_2'$) as shown in the figure. Consider the instant when the poles are in a position as shown. Identify the correct statement regarding the polarity of the induced emf at this instant in coils c_1 and c_2 .



- 1) \odot in c_1 , no emf in c_2
- 2) \otimes in c_1 , no emf in c_2
- 3) \odot in c_2 , no emf in c_1
- 4) \otimes in c_2 , no emf in c_1

51. A 50 kW dc shunt motor is loaded to draw rated armature current at any given speed. When driven

- (i) at half the rated speed by armature voltage control and
- (ii) at 1.5 times the rated speed by field control, the respective output powers delivered by the motor are approximately.

- 1) 25 kW in (i) and 75 kW in (ii)
- 2) 25 kW in (i) and 50 kW in (ii)
- 3) 50 kW in (i) and 75 kW in (ii)
- 4) 50 kW in (i) and 50 kW in (ii)

52. In relation to DC machines, match the following and choose the correct combination

	Group - 1 Performance Variables		Group - 2 Proportional to
P	Armature emf (E)	1	Flux (ϕ), speed (ω) and armature current (I_a)
Q	Developed torque (T)	2	ϕ and ω only
R	Developed power (P)	3	ϕ and I_a only
		4	I_a and ω only
		5	I_a only

- 1) P-3, Q-3, R-1
- 2) P-2, Q-5, R-4
- 3) P-3, Q-5, R-4
- 4) P-2, Q-3, R-1

53. In relation to the synchronous machines, which one of the following statements is false?

- 1) In salient pole machines, the direct-axis synchronous reactance is greater than the quadrature-axis synchronous reactance
- 2) The damper bars help the synchronous motor self start
- 3) Short circuit ratio is the ratio of the field current required to produce the rated voltage on open circuit to the rated armature current
- 4) The V-curve of a synchronous motor represents the variation in the armature current with field excitation, at a given output power.

54. Under no load condition, if the applied voltage to an induction motor is reduced from the rated voltage to half the rated value,

- 1) the speed decreases and the stator current increases
- 2) both the speed and the stator current decrease
- 3) the speed and the stator current remain practically constant
- 4) there is negligible change in the speed but the stator current decreases

55. A three-phase cage induction motor is started by direct-on-line (DOL) switching at the rated voltage. If the starting current drawn is 6 times the full load current, and the full load

slip is 4%, then ratio of the starting developed torque to the full load torque is approximately equal to

- 1) 0.24 2) 1.44 3) 2.40 4) 6.00

56. In a single phase induction motor driving a fan load, the reason for having a high resistance rotor is to achieve

- 1) low starting torque
2) quick acceleration
3) high efficiency
4) reduced size

57. Determine the correctness or otherwise of the following Assertion [a] and the Reason [r]

Assertion : Under V/f control of induction motor, the maximum value of the developed torque remains constant over a wide range of speed in the sub-synchronous region.

Reason : The magnetic flux is maintained almost constant at the rated value by keeping the ratio V/f constant over the considered speed range.

- 1) Both (a) and (r) are true and (r) is the correct reason for (a)
2) Both (a) and (r) are true but (r) is not the correct reason for (a)
3) Both (a) and (r) are false
4) (a) is true but (r) is false

58. The parameters of a transposed overhead transmission line are given as :

Self reactance $x_s = 0.4 \Omega / \text{km}$ and Mutual reactance $x_m = 0.1 \Omega / \text{km}$

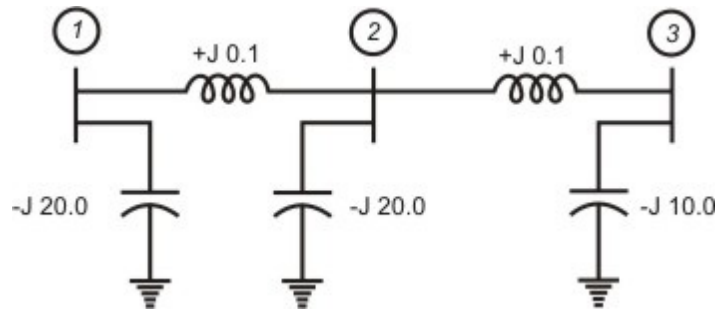
The positive sequence reactance x_1 and zero sequence reactance x_0 , respectively, in Ω / km are

- 1) 0.3, 0.2
2) 0.5, 0.2
3) 0.5, 0.6
4) 0.3, 0.6

59. At an industrial sub-station with a 4 MW load, a capacitor of 2 MVAR is installed to maintain the load power factor at 0.97 lagging. If the capacitor goes out of service, the load power factor becomes

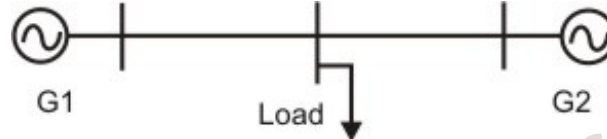
- 1) 0.85
2) 1.00
3) 0.80 lag
4) 0.90 lag

60. The network shown in the given figure has impedances in p.u. as indicated. The diagonal element Y_{22} of the bus admittance matrix Y_{BUS} of the network is



- 1) - j 19.8
- 2) + j 20.0
- 3) + j 0.2
- 4) - j 19.95

61. A load centre is at an equidistant from the two thermal generating stations G_1 and G_2 as shown in the figure. The fuel cost characteristics of the generating stations are given by



$$F_1 = a + bP_1 + cP_1^2 \text{ Rs/hour}$$

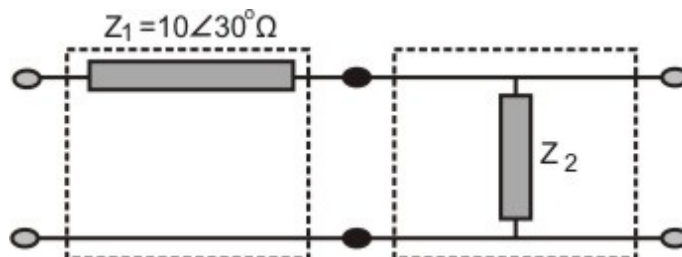
$$F_2 = a + bP_2 + 2cP_2^2 \text{ Rs/hour}$$

where P_1 and P_2 are the generation in MW of G_1 and G_2 , respectively.

For most economic generation to meet 300 MW of load, P_1 and P_2 , respectively, are

- 1) 150, 150
- 2) 100, 200
- 3) 200, 100
- 4) 175, 125

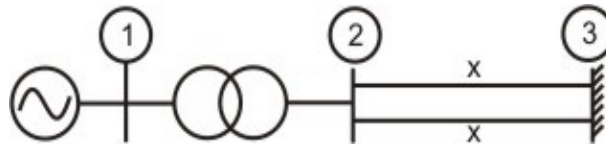
62. Two networks are connected in cascade as shown in the figure. With the usual notations the equivalent A, B, C and D constants are obtained. Given that, $C = 0.025 \angle 45^\circ$, the value of Z_2 is



- 1) $10 \angle 30^\circ \Omega$
- 2) $40 \angle -45^\circ \Omega$
- 3) 1Ω
- 4) 0Ω

63. A generator with constant 1.0 p.u. terminal voltage supplies power through a step-up transformer of 0.12 p.u. reactance and a double-circuit line to an infinite bus bar as shown in the figure. The infinite bus voltage is maintained at 1.0 p.u. Neglecting the resistances

and susceptances of the system, the steady state stability power limit of the system is 6.25 p.u. If one of the double-circuit is tripped, then resulting steady state stability power limit in p.u. will be



- 1) 12.5 p.u.
- 2) 3.125 p.u.
- 3) 10.0 p.u.
- 4) 5.0 p.u.

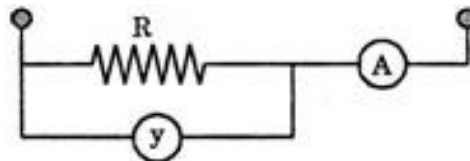
64. The simultaneous application of signals $x(t)$ and $y(t)$ to the horizontal and vertical plates, respectively, of an oscilloscope, produces a vertical figure-of-8 display. If P and Q are constants, and $x(t) = P \sin(4t + 30)$, then $y(t)$ is equal to

- 1) $Q \sin(4t - 30)$
- 2) $Q \sin(2t + 15)$
- 3) $Q \sin(8t + 60)$
- 4) $Q \sin(4t + 30)$

65. A DC ammeter has a resistance of 0.1Ω and its current range is 0-100A. If the range is to be extended to 0-500A, then meter requires the following shunt resistance

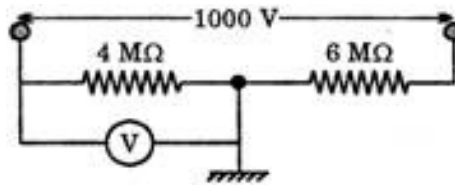
- 1) 0.010Ω
- 2) 0.011Ω
- 3) 0.025Ω
- 4) 1.0Ω

66. The set-up in the figure is used to measure resistance R . The ammeter and voltmeter resistances are 0.01Ω and 2000Ω , respectively. Their readings are 2 A and 180 V, respectively, giving a measured resistance of 90Ω . The percentage error in the measurement is



- 1) 2.25 %
- 2) 2.35 %
- 3) 4.5 %
- 4) 4.71 %

67. A 1000 V DC supply has two 1-core cables as its positive and negative leads: their insulation resistances to earth are $4 M\Omega$ and $6 M\Omega$, respectively, as shown in the figure. A voltmeter with resistance 50Ω is used to measure the insulation of the cable. When connected between the positive core and earth, then voltmeter reads

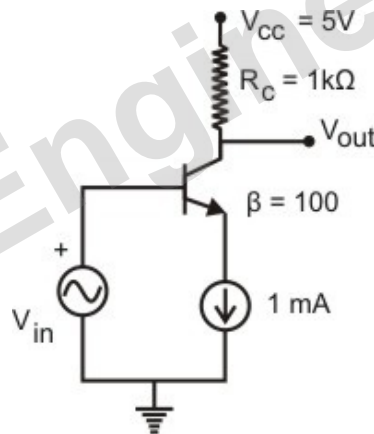


- 1) 8 V
- 2) 16 V
- 3) 24 V
- 4) 40 V

68. Two wattmeters, which are connected to measure the total power on a three - phase system supplying a balanced load, read 10.5 kW and - 2.5 kW, respectively. The total power and the power factor, respectively, are

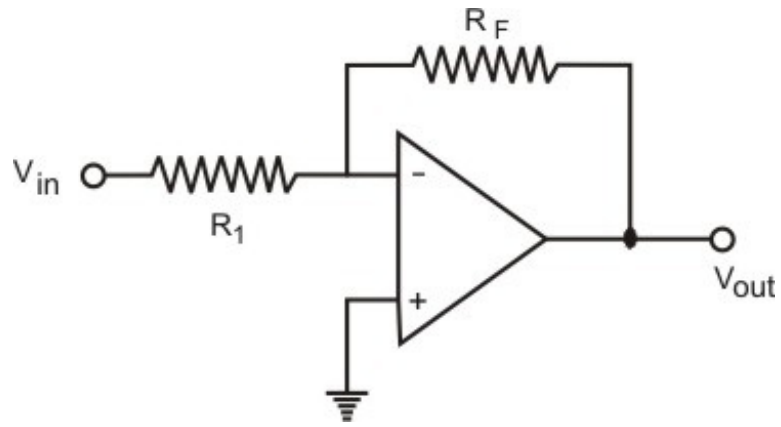
- 1) 13.0 kW, 0.334
- 2) 13.0 kW, 0.684
- 3) 8.0 kW, 0.52
- 4) 8.0 kW, 0.334

69. The common emitter amplifier shown in the figure is biased using a 1 mA ideal current source. The approximate base current value is



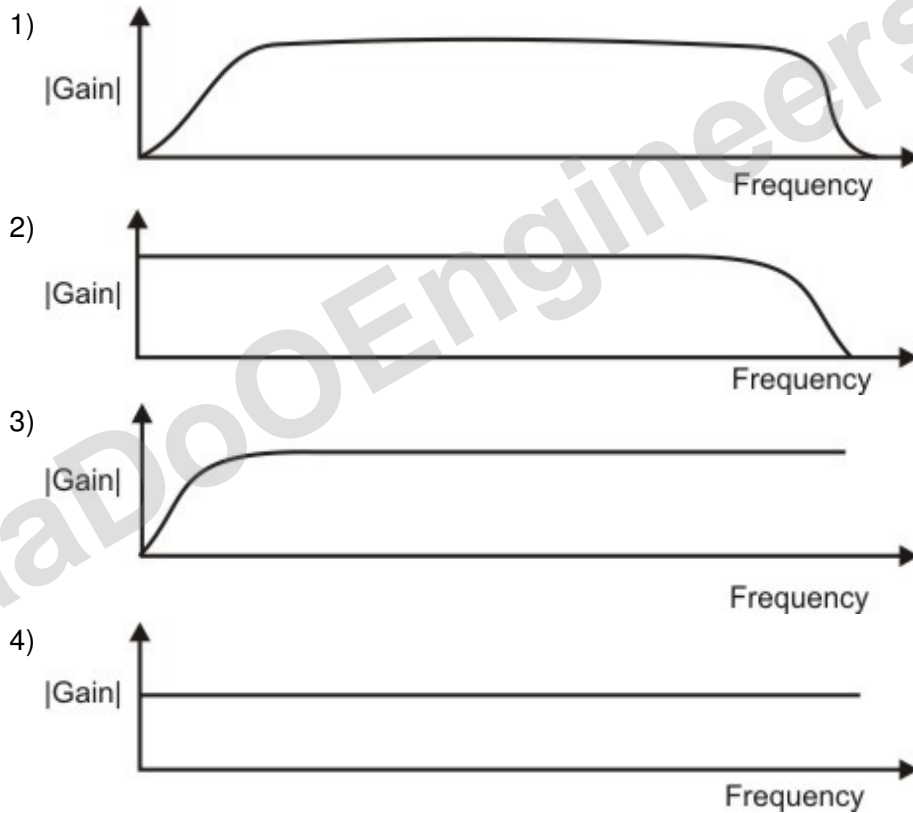
- 1) 0 μ A
- 2) 10 μ A
- 3) 100 μ A
- 4) 1000 μ A

70. Consider the inverting amplifier, using an ideal operational amplifier shown in the figure. The designer wishes to realize the input resistance seen by the small-signal source to be as large as possible, while keeping the voltage gain between -10 and -25. The upper limit on R_F is 1 M Ω . The value of R_1 should be

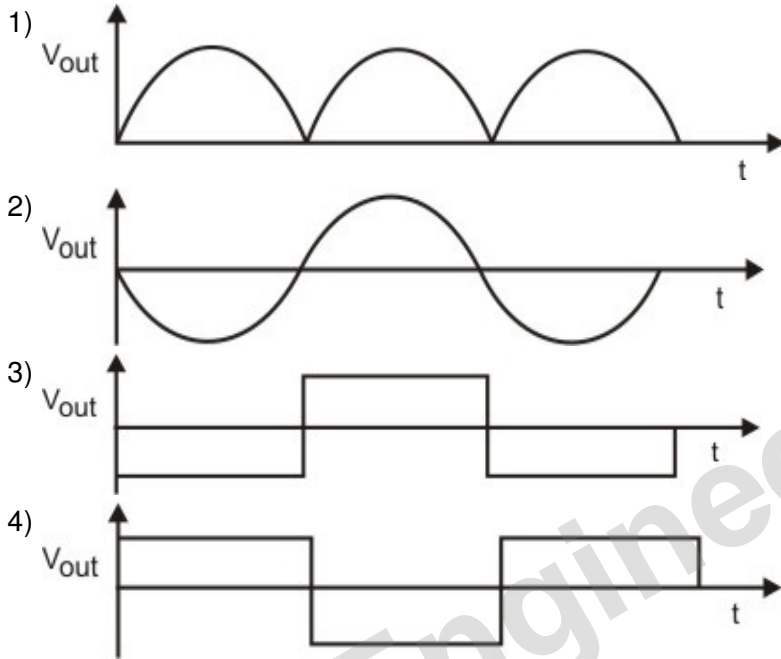
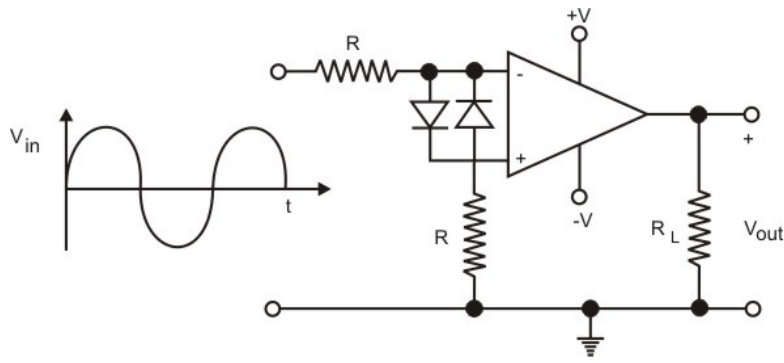


- 1) Infinity
- 2) 1 MΩ
- 3) 100 kΩ
- 4) 40 kΩ

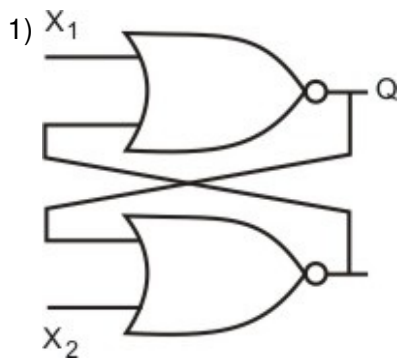
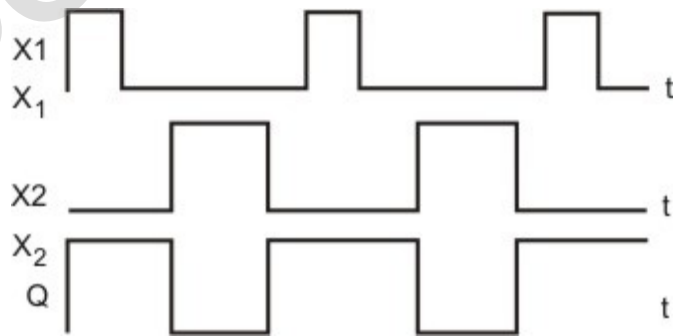
71. The typical frequency response of a two-stage direct coupled voltage amplifier is as shown in

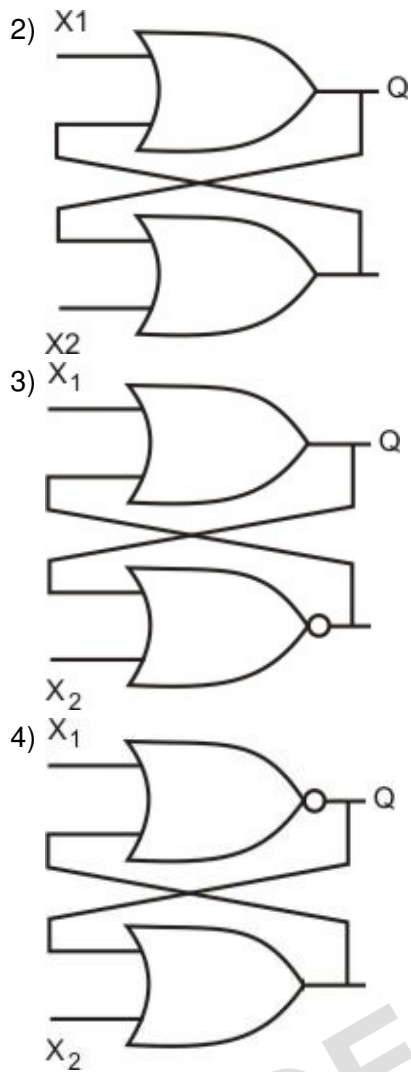


72. In the given figure, if the input is a sinusoidal signal, the output will appear as shown in

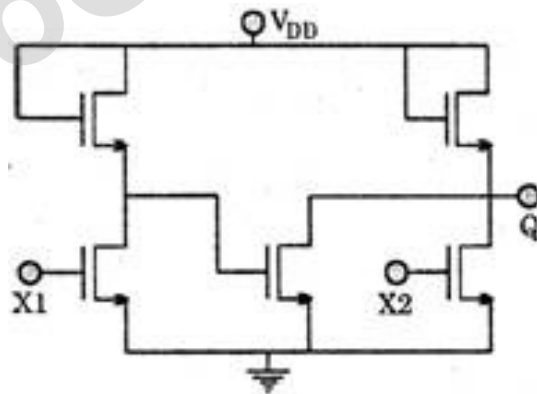


73. Select the circuit which will produce the given output Q for the input signals X_1 and X_2 given in the figure



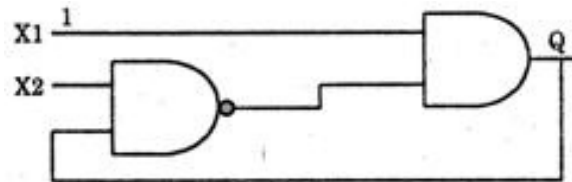


74. If X_1 and X_2 are the inputs to the circuit shown in the figure, the output Q is



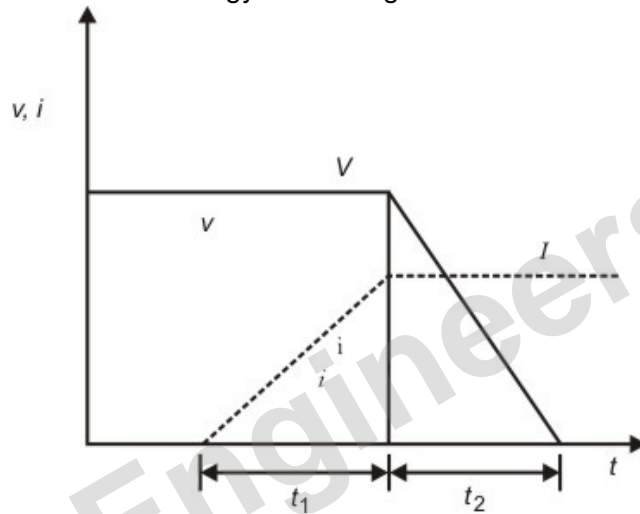
- 1) $\overline{X_1 + X_2}$
- 2) $\overline{X_1 \cdot X_2}$
- 3) $\overline{X_1} \cdot X_2$
- 4) $X_1 \cdot \overline{X_2}$

75. In the figure, as long as $X_1 = 1$ and $X_2 = 1$, the output Q remains



- 1) at 1
- 2) at 0
- 3) at its initial value
- 4) unstable

76. The figure shows the voltage across a power semiconductor device and the current through the device during a switching transitions. It the transition a turn ON transition or a turn OFF transition? What is the energy lost during the transition?

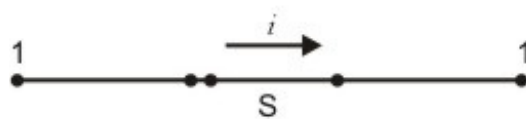


- 1) Turn ON, $VI/2 (t_1 + t_2)$
- 2) Turn OFF, $VI (t_1 + t_2)$
- 3) Turn ON, $VI (t_1 + t_2)$
- 4) Turn OFF, $VI/2 (t_1 + t_2)$

77. An electronic switch S is required to block voltages of either polarity during its OFF state as shown in the fig. (a). This switch is required to conduct in only one direction during its ON state as shown in the figure (b)

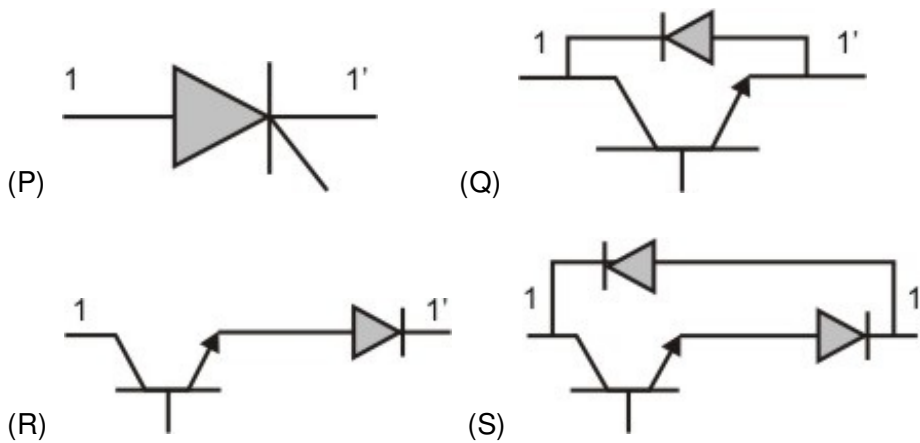


(a)



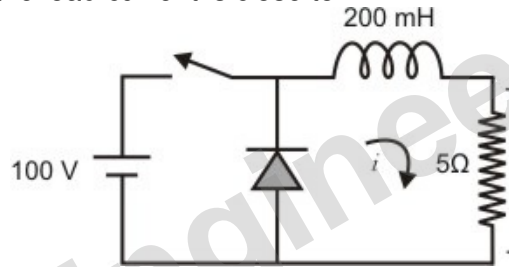
(b)

Which of the following are valid realizations of the switch S?



- 1) Only P
- 2) P and Q
- 3) P and R
- 4) R and S

78. The given figure shows a step-down chopper switched at 1kHz with a duty ratio $D = 0.5$. The peak-peak ripple in the load current is close to

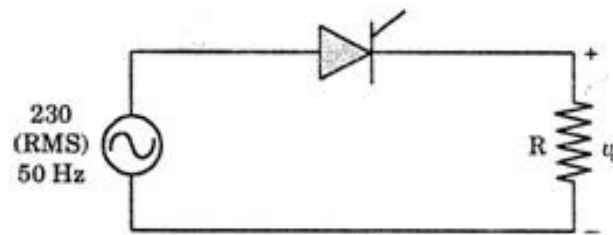


- 1) 10 A
- 2) 0.5 A
- 3) 0.125 A
- 4) 0.25 A

79. An electric motor, developing a starting torque of 15 Nm, starts with a load torque of 7Nm on its shaft. If the acceleration at start is 2 rad/sec^2 , the moment of inertia of the systems must be (neglecting viscous and Coulomb friction)

- 1) 0.25 kg m^2
- 2) 0.25 Nm^2
- 3) 4 kg m^2
- 4) 4 Nm^2

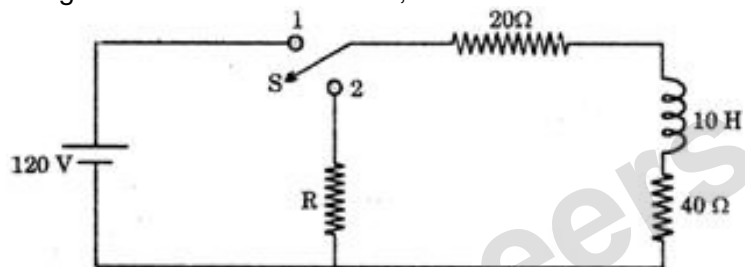
80. Consider a phase-controlled converter shown in the figure. The thyristor is fired at an angle α in every positive half cycle of the input voltage. If the peak value of the instantaneous output voltage equals 230 V, the firing angle α is close to



- 1) 45°
- 2) 135°
- 3) 90°
- 4) 83.6°

:

81a. If, at $t = 0^+$, the voltage across the coil is 120 V, the value of resistance R is



- 1) 0Ω
- 2) 20Ω
- 3) 40Ω
- 4) 60Ω

81b. For the value of obtained in (a), the time taken for 95% of the stored energy to be dissipated is close to

- 1) 0.10 sec
- 2) 0.15 sec
- 3) 0.50 sec
- 4) 1.0 sec

:

82a. The state transition matrix

- 1) $\begin{bmatrix} 1 & \frac{1}{3}(1 - e^{-3t}) \\ 0 & e^{-3t} \end{bmatrix}$
- 2) $\begin{bmatrix} 1 & \frac{1}{3}(e^{-t} - e^{-3t}) \\ 0 & e^{-t} \end{bmatrix}$
- 3) $\begin{bmatrix} 1 & \frac{1}{3}(e^{-t} - e^{-3t}) \\ 0 & e^{-3t} \end{bmatrix}$

$$4) \begin{bmatrix} 1 & (1 - e^{-t}) \\ 0 & e^{-t} \end{bmatrix}$$

82b. The state transition equation

$$1) X(t) = \begin{bmatrix} t - e^{-t} \\ e^{-t} \end{bmatrix}$$

$$2) X(t) = \begin{bmatrix} t - e^{-t} \\ 3e^{-3t} \end{bmatrix}$$

$$3) X(t) = \begin{bmatrix} t - e^{-3t} \\ 3e^{-3t} \end{bmatrix}$$

$$4) X(t) = \begin{bmatrix} t - e^{-3t} \\ e^{-t} \end{bmatrix}$$

:

83a. The induced emf (line-to-line) is close to

- 1) 5.5 kV
- 2) 7.2 kV
- 3) 9.6 kV
- 4) 12.5 kV

83b. The power (or torque) angle is close to

- 1) 13.9°
- 2) 18.3°
- 3) 24.6°
- 4) 33.0°

84a. the positive sequence driving point reactance at the bus is

- 1) 2.5 Ω
- 2) 4.033 Ω
- 3) 5.5 Ω
- 4) 12.1 Ω

84b. and the zero sequence driving point reactance at the bus is

- 1) 2.2 Ω
- 2) 4.84 Ω
- 3) 18.18 Ω
- 4) 22.72 Ω

:

85a. The transconductance of the MOSFET is

- 1) 0.75 ms
- 2) 1 ms

- 3) 2 ms
- 4) 10 ms

85b. The voltage gain of the amplifier is

- 1) +5
- 2) -7.5
- 3) +10
- 4) -10

FaaDoOEngineers.com

Answer Key

1) 3	2) 1	3) 4	4) 2	5) 4	6) 3	7) 1	8) 4	9) 1	10) 4
11) 3	12) 1	13) 4	14) 2	15) 1	16) 2	17) 4	18) 4	19) 2	20) 1
21) 3	22) 1	23) 1	24) 3	25) 4	26) 4	27) 2	28) 1	29) 2	30) 3
31) 3	32) 1	33) 2	34) 3	35) 1	36) 1	37) 3	38) 3	39) 2	40) 3
41) 4	42) 2	43) 4	44) 2	45) 3	46) 2	47) 1	48) 4	49) 2	50) 2
51) 2	52) 4	53) 3	54) 2	55) 2	56) 2	57) 1	58) 4	59) 3	60) 4
61) 3	62) 2	63) 4	64) 2	65) 3	66) 4	67) 1	68) 4	69) 2	70) 3
71) 2	72) 4	73) 2	74) 4	75) 1	76) 4	77) 3	78) 3	79) 3	80) 3
81a) 1	81b) 3	82a) 1	82b) 3	83a) 2	83b) 3	84a) 1	84b) 1	85a) 2	85b) 4

FaaDoOEngineers.com