



# Design your Destiny!

With a career in IT and a sponsored MS Degree

**Experience WASE**  
Wipro Academy of Software Excellence



# WASE

## WASE – Wipro Academy of Software Excellence

Wipro Technologies India's leading IT company initiated the WASE Programme – Wipro Academy of Software Excellence in 1995. It is the oldest and the most successful Earn while you Learn Programme in the country. Pioneered with a vision to create employment opportunities in Information Technology for non engineering graduates, the programme has so far trained over 6000 graduates many of whom have risen to the ranks of senior managers. WASE provides best in class IT training to young graduates like yourselves equipping you with the knowledge to cope with the ever-changing face of the Information Technology revolution. It is a 4 year MS Programme in Software Engineering, received from BITS, Pilani.

### Why should you choose WASE?

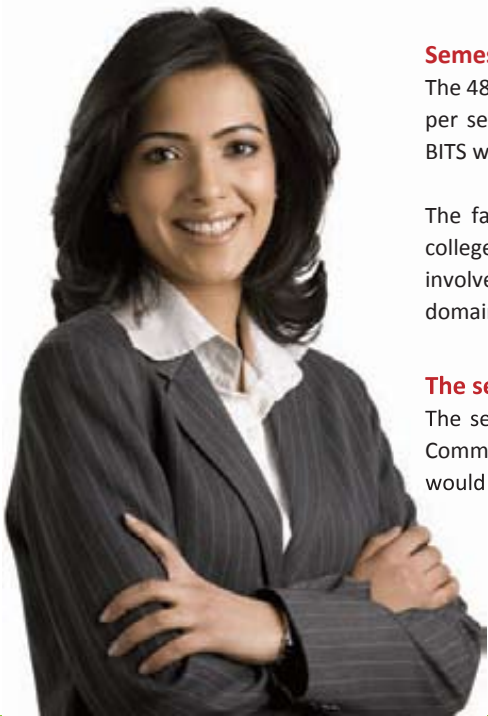
- An opportunity to work in the field of IT with a reputed company
- On the job training to work on complex projects and the best mentors
- Gain experience while earning, a chance to become financially independent
- A Masters degree from an institution which is respected the world over

*WASE provides you an opportunity to pursue an 8-semester (four years) off-campus collaborative MS Programme with Birla Institute of Technology & Science (BITS), Pilani (Rajasthan, India). Along with offering you the best IT platform, soft skills and providing live project exposure.*

### You must fulfill the following criteria to enroll into WASE

- B.Sc. (CS/ IT/ Electronics / Physics / Mathematics / Statistics) / BCA / BCM
- 50% aggregate marks in 10th & 12th
- 60% aggregate marks in graduation till date
- Mathematics as one subject in 12th - Mandatory
- Students currently in the final year of graduation





### Semester Details

The 48 month course is divided into 8 semesters, with 4 Courses per semester. Contact classes for 16 weeks are conducted by BITS with 4 sessions over the weekend, 2 hours per session.

The faculty is hand-picked from among the best Engineering colleges so you get the best there is. During the week, you will be involved in working on live projects among various business domains in Wipro giving you first-hand knowledge and training.

### The selection process

The selection procedure for WASE comprises of two stages, a Common Entrance Test and HR interview. Dates for each stage would be made available to you upon registration.

**WASE is globally ranked 2nd among the most mature Corporate Universities**

After joining WASE, you will receive a monthly stipend

Period	Monthly consolidated stipend per month
During the first three months of the academic year	₹ 7,800/-
From 4th to 12th month of the first academic year	₹ 10,300/-
During the second academic year	₹ 12,800/-
During the third academic year	₹ 18,300/-
During the fourth academic year	₹ 23,000/-

**Don't miss this opportunity!**

REGISTER NOW on <http://careers.wipro.com/wase>

Only registered candidates can attend the selection process for WASE



<http://careers.wipro.com/wase>

Cruise along with your friends and subscribe on  
<http://www.wipro-campusarena.com> for more learning, fun and interaction