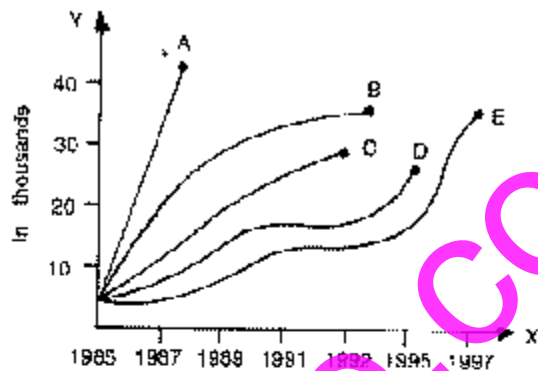


1. Cranc's - foot delta is that of:
A. Brahmaputa B. Nile
C. Amazon D. Mississippi
2. Why is sea water more salty than rain water?
A. sea animals are salt producing
B. there are salt beds in the ocean
C. the air around sea is salty
D. salt from the land are washed down to the sea by the rivers
3. In which of the following deltas the Narimanam oil field is located?
A. Godavri B. Krishna
C. Kaveri D. Mahanadi
4. Oil has struck in the basin of:
A. Godavri B. Krishna
C. Mahanadi D. None of the above
5. Minute particle in Earth's crust are:
A. sand B. rocks
C. silt D. gravel
6. Which of the following is India's first geo-stationary satellite?
A. Apple B. INSAT-B
C. Aryabhata D. Rohini
7. Which of the following is used in diesel engine?
(i) cylinder (ii) piston (iii) sparking plug
A. (i) and (ii) only
B. (i) and (iii) only
C. all (i), (ii) and (iii)
D. none of the above
8. Which of the following is the main source of electricity in our country?
A. Nuclear energy

- B. Hydro electricity
C. Thermal energy
D. Geothermal energy
9. Mirage is formed due to:
A. reflection
B. refraction
C. total internal reflection
D. change in refractive index of air with change in temperature
10. A free-floating astronaut 'P' pushes another free-floating astronaut 'Q' in space. The mass of P is greater than that of Q. The force exerted by astronaut P on astronaut Q will be:
A. equal to zero
B. equal to the force exerted by Q on P
C. greater than the forces exerted by Q on P
D. less than the force exerted by Q on P
11. The type of crop which is able to fix nitrogen from air is known as:
A. wheat B. legume
C. coffee D. tuber
12. Which of the following chemicals in automobiles exhaust can cause cancer?
A. lead
B. oxides of nitrogen
C. polycyclic hydrocarbons
D. carbon monoxide
13. The different blood groups were discovered by:
A. Jonas Salk
B. Alexander Flemming
C. Karl Landsteiner
D. William Hasvey

14. The rich source of vitamin A of the following is:
- A. onion B. carrot
C. lemon D. potato
15. Soybeans contain high degree of:
- A. proteins
B. vitamins
C. nutrients
D. carbohydrates
16. If organic life did not exist the oxygen content in the atmosphere would have:
- A. increased
B. decreased
C. remained the same
D. converted to some other
17. Washing soda in water behaves like:
- A. alkaline B. acidic
C. neutral D. amphoteric
18. The radius of an atomic nucleus is of the order of:
- A. 10^{-10} cm
B. 10^{-8} cm
C. 10^{-15} cm
D. 10^{-13} cm
19. An example of optically active isomer is:
- A. $\text{Pt}(\text{NH}_3)_2\text{Cl}_2$
B. $[\text{Pt}(\text{NH}_3)_2\text{ClBr}]^-$
C. $\text{AsS}_2\text{CH}_3\text{-C}_2\text{H}_5\text{-C}_6\text{H}_5\text{-COO}^-$
D. $\text{Pt}(\text{NH}_3)_2\text{ClBr}$
20. Passing of α particle straight through an atom indicates that:
- A. atom has electrons
B. atom has protons
C. atom has nucleus
D. atom is extra-ordinary hollow having a lot of empty space inside
21. Which among the following 5 curves represent

exam since 1985?



- A. A B. B
C. C D. E

22. If $\sin^{-1}\left(\frac{2a}{1+a^2}\right) + \sin^{-1}\left(\frac{2b}{1+b^2}\right) = 2 \tan^{-1}x$, then x is equal to:

- A. $\frac{a-b}{1+ab}$ B. $\frac{b}{1+ab}$
C. $\frac{b}{1-ab}$ D. $\frac{a+b}{1-ab}$

23. If A is a square matrix, then $A + A^T$ will be transposed:

- A. diagonal B. symmetric
C. skew-symmetric D. identity matrix

24. A copper bar measuring 1 m long, 2 cm wide and 1 cm thick is rolled into a strip measuring 10 cm wide and 1 mm thick. What is the length of the strip so rolled?

- A. 150 cm B. 200 cm
C. 400 cm D. 450 cm

25. Select the odd figure which does not match with series:



26. A toggle operation is used:
- A. with a flip-flops and a gate circuit
 - B. with a flip-flop
 - C. without a flip-flop
 - D. with a gate circuit

27. In computer ALU is part of:
- A. input/output
 - B. logic
 - C. CPU
 - D. software

28. ALGOL resembles:
- A. COBOL
 - B. BASIC
 - C. FORTRAN
 - D. all of the above

29. Scratch pad memory is used to:
- A. support main programme
 - B. store small amounts of information that can be fetched when needed
 - C. store redundant data
 - D. store flexible data

30. The matic maps are designed to communicate geographic concepts like:
- A. relative magnitude
 - B. distribution of densities
 - C. spatial relationship
 - D. all of the above

ANSWERS

| | | | | | | | | | |
|----|----|----|----|----|----|----|----|----|----|
| 1 | 2 | 3 | 4 | 5 | 6 | 7 | 8 | 9 | 10 |
| D | D | C | A | C | B | B | C | C | A |
| 11 | 12 | 13 | 14 | 15 | 16 | 17 | 18 | 19 | 20 |
| C | D | C | B | A | C | A | B | C | D |
| 21 | 22 | 23 | 24 | 25 | 26 | 27 | 28 | 29 | 30 |
| D | D | B | B | B | B | C | C | B | D |