

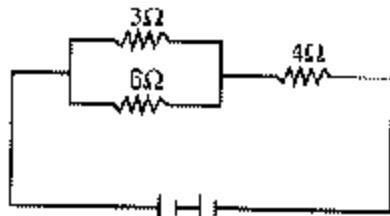
- Contours are the showing:
  - places on earth of equal rainfall
  - places of same temperature
  - places on earth at the same altitude
  - places of different temperature
- The temperature at the core of earth is about:
  - 20,000°C
  - 26,000°C
  - 40,000°C
  - 2000°C
- The most important constituent of earth crust are:
  - sedimentary rocks
  - metamorphic rocks
  - igneous rock
  - granite
- The satellite construction centre in India is at:
  - Panaya
  - Bangalore
  - Sriharikota
  - Thumba
- Which of the following is not a navigable river in India?
  - Chenab
  - Brahmaputra
  - Godavari
  - Narmada
- Cow milk predominates over buffalo milk in:
  - Haryana
  - Orissa
  - Punjab
  - Uttar Pradesh
- Mushroom belongs to:
  - Basidiomycetes
  - Ascomycetes
  - Dentromycetes
  - None of these
- Spirally twisted chloroplast is present in:
  - chlamydomonas
  - rhizopus
  - bacteria
  - spirogyra
- Carbaminohaemoglobin contains:
  - O<sub>2</sub>
  - CO
  - CO<sub>2</sub>
  - CH<sub>4</sub>
- The internal resistance of which of following instrument is highest:
  - ammeter
  - galvanometer
  - voltmeter
  - micrometer
- An air bubble in water shines because of:
  - reflection

- refraction
  - total internal reflection
  - diffraction
- Eutrophication result:
    - growing of algae
    - killing of fishes
    - depletion of oxygen
    - All of these
  - Tocopherol is:
    - vitamin A
    - vitamin B
    - vitamin C
    - vitamin E
  - Resonance energy of Benzene is:
    - 30 KJ
    - 36 Kcal
    - 36 KJ
    - 30 cal
  - Radio Carbon dating is used to find the age of:
    - fossil
    - rocks
    - dead bodies
    - plant
  - Marsh areas contain:
    - propane
    - butane
    - ethane
    - methane
  - Oxygen is prepared in the laboratory by:
    - heating potassium chlorate
    - heating potassium oxalate
    - heating ferrous oxide
    - heating calcium oxide
  - A bag contain 5 white, 7 red and 8 black balls. If four balls are drawn one by one without replacement what is the probability that all are white.
    - $\frac{1}{5}$
    - $\frac{1}{25}$
    - $\frac{1}{125}$
    - $\frac{1}{969}$
  - $\begin{vmatrix} 2 & -1 \\ 1 & 3 \\ 3 & 2 \end{vmatrix}$  has value:
    - 1
    - 0
    - 1
    - 2

20.  $\lim_{x \rightarrow 0} \frac{\sin x}{x} =$

- A. 0  
B. 1  
C. -1  
D.  $\frac{1}{x}$

21. In the given figure current through 3Ω resistance is 0.8A, then potential drop through 4Ω resistance is:



- A. 1.2 V  
B. 6 V  
C. 4.8 V  
D. 3 V

22. Phase difference between voltage and current in a capacitor in A.C. circuit is:

- A.  $\pi$   
B.  $\pi/2$   
C. 0  
D.  $\pi/3$

23. Which of following is not de-Broglie equation?

- A.  $\lambda = \frac{h}{mv}$   
B.  $\lambda = \frac{h}{\sqrt{2mE}}$   
C.  $\lambda = \frac{h}{\sqrt{3mkT}}$   
D.  $\lambda = \frac{h}{2m}$

24. RPG is related with:

- A. COBOL  
B. FORTRAN  
C. BASIC  
D. None of these

25. Mini computer manufactured today are more powerful than:

- A. supercomputer  
B. microcomputer  
C. mainframes  
D. None of these

26. Arithmetic Unit (A.U) performs:

- A. CPU  
B. primary memory  
C. mathematics computation  
D. None of these

27. SQL is a relational language which has also been implemented in several:

- A. DBMS  
B. FCA  
C. QUEL  
D. None of these

28. Pascal provide standard files, named:

- A. input and output  
B. input  
C. output  
D. None of these

29. A loop is the easiest way to perform repetition task such as printing a list of

- A. a few names  
B. several hundred names  
C. one name only  
D. None of these

30. To store word COMPUTER bytes required are:

- A. 6  
B. 8  
C. 10  
D. 16

## ANSWERS

1	2	3	4	5	6	7	8	9	10
C	D	C	A	D	B	A	D	C	C
11	12	13	14	15	16	17	18	19	20
C	D	D	B	A	D	A	D	B	B
21	22	23	24	25	26	27	28	29	30
C	B	D	A	A	C	A	A	B	B