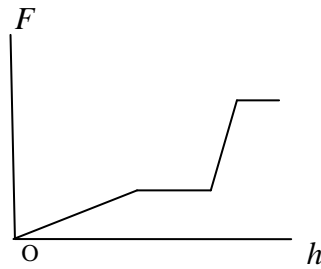
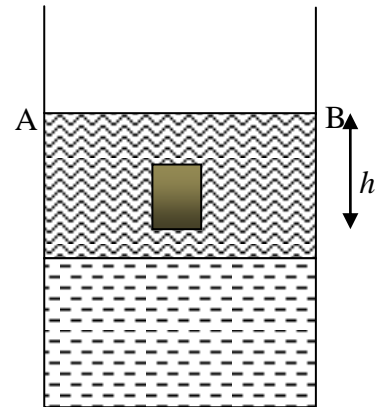
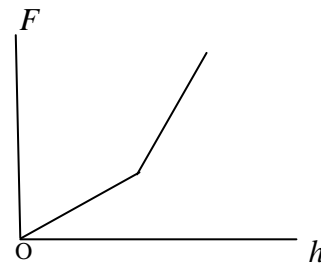




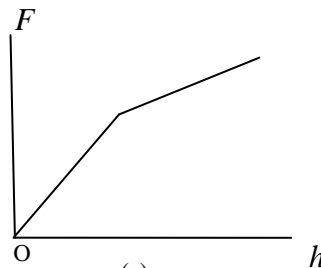
- 1 The figure , on the right, shows a jar filled with two liquids of densities ρ and $\rho/2$ that do not mix. A cylinder made of a material of density $3\rho/4$ is held in the jar at various depths starting from the position where the lower surface of the cylinder touches the upper surface AB of the liquid. Which of the following schematic curves best describes the buoyancy force F on the cylinder as a function of the displacement h from the starting position?



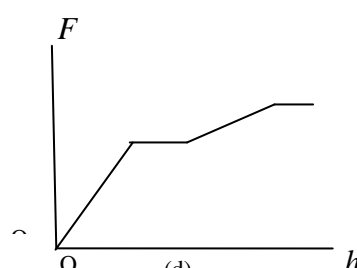
(a)



(b)



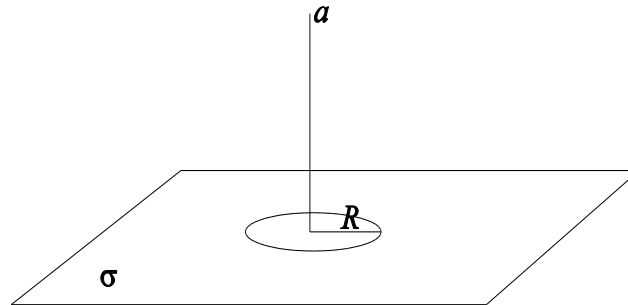
(c)



(d)

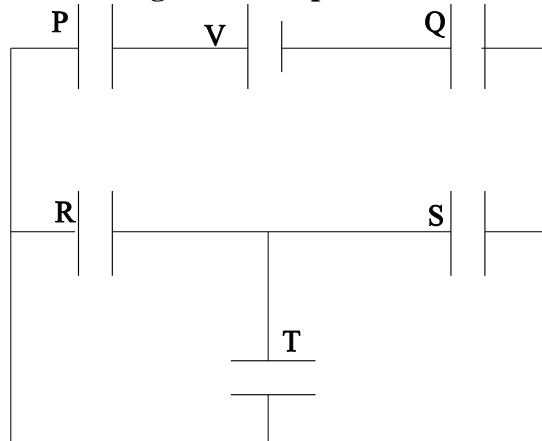


2. An infinitely large surface of uniform charge density σ has a disc of radius R cut out (see figure). The magnitude of the electric field at a distance a above the centre of the disc is given by

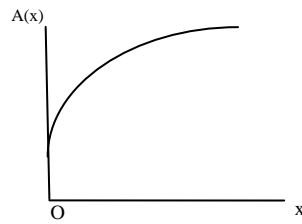


- (a) $\frac{\sigma}{2\epsilon_0} \frac{a^2}{R^2 + a^2}$
- (b) $\frac{\sigma}{\epsilon_0} \frac{a}{\sqrt{R^2 + 4a^2}}$
- (c) $\frac{\sigma\pi}{2\epsilon_0} \frac{a}{\sqrt{R^2 + \pi^2 a^2}}$
- (d) $\frac{\sigma}{2\epsilon_0} \frac{a}{\sqrt{R^2 + a^2}}$

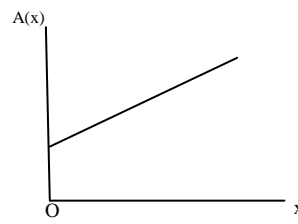
3. All the five capacitors shown in the figure have the same capacitance C . The battery has emf V . The charge on the capacitor T is



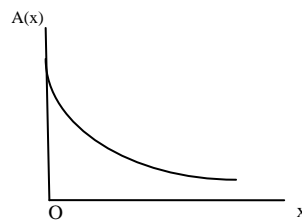
- (a) zero
- (b) CV
- (c) $CV/3$
- (d) $CV/5$



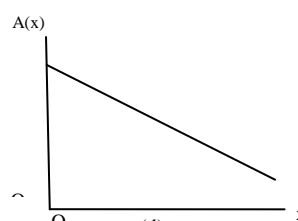
(a)



(b)



(c)



(d)

8. A spherical soap bubble of radius R is

blown from a tiny drop of soap solution. If the surface tension of the soap film is T , the work required to make the bubble is

(a) $2\pi TR^2$
(c) $6\pi TR^2$

(b) $4\pi TR^2$
(d) $8\pi TR^2$

9. In a column of air at a given temperature T , the density ρ is found to vary with the

altitude z above ground level according to $\rho(z) = \rho_0 \exp\left(-\frac{mgz}{k_B T}\right)$, where ρ_0 is a

positive constant, m is the mass of a molecule of air, g is the acceleration due to gravity, and k_B is Boltzmann's constant. The density $\rho(z)$ of molecules is proportional to the probability of finding molecules at height z . The mean value of the height above ground level of an air molecule is therefore equal to

a) $\frac{2k_B T}{mg}$

b) $\sqrt{\frac{k_B T}{mg}}$


c) $\frac{k_B T}{mg}$

d) $\left(\frac{k_B T}{mg}\right)^2$

Comprehensive: Questions no. 10 to 12

Experiments show that the number of nucleons (protons and neutrons) per unit volume inside a nucleus is fairly constant near its center, and gradually decrease in the outer region. The near constant of nucleon density results from the fact that each nucleon in a nucleus interacts only with a small number of nucleons in its surrounding through attractive nuclear force. The nucleon density $\rho(r)$ as a function of the distance r from the center of the nucleus is approximately given by

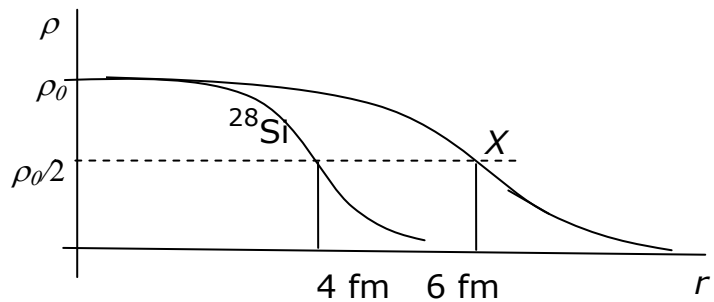
$$\rho(r) = \frac{\rho_0}{1 + \exp\left[\frac{r - R}{a}\right]}$$

	ISAT 2010 INDIAN INSTITUTE OF SPACE SCIENCE AND TECHNOLOGY	Page 5 OF 12
	PAPER I – PHYSICS, CHEMISTRY AND MATHEMATICS	SET - B

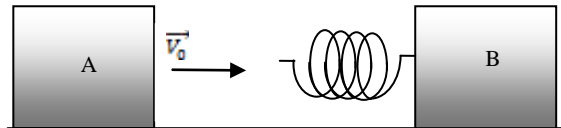
where $\rho_0 = 0.17 \text{ nucleon/fm}^3$, $R = (1.1 \text{ fm}) A^{1/3}$ and $a = 0.55 \text{ fm}$. Here $A = \text{mass number}$.

10. The mass density in a nucleus near its center, in units of kg/m^3 , is in the range
 (a) 10^{15} to 10^{20} (b) 10^5 to 10^{10}
 (c) 10^{10} to 10^{15} (d) 10^{20} to 10^{25}
11. For the nucleus ^{216}Te , the value of r for which the nucleon density falls to half its value at the centre is in the range
 (a) 7 to 8 fm (b) 5 to 6 fm
 (c) 6 to 7 fm (d) 8 to 9 fm
12. The plots of $\rho(r)$ versus r for ^{28}Si and another nucleus X are shown in the figure. The nucleus X could be

- (a) ^{42}Ca
 (b) ^{94}Zr
 (c) ^{63}Cu
 (d) ^{142}Ba



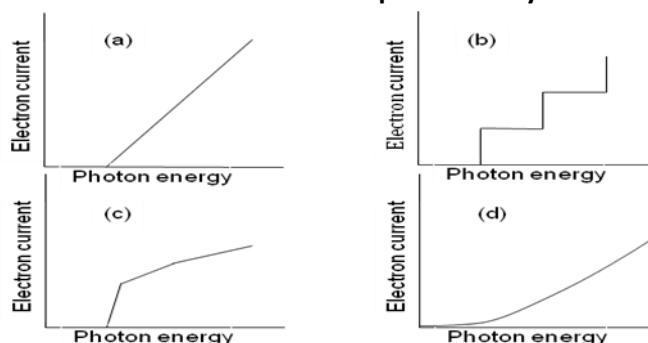
13. A block A with initial velocity \vec{V}_0 strikes a spring tied to a block B identical to A, initially at rest (see figure). The spring is assumed to be massless. Friction may be neglected. At the instant of maximum compression of the spring, let the velocities of A and B be \vec{V}_1 and \vec{V}_2 , respectively.



Then


- (a) $\vec{V}_1 + \vec{V}_2 = \frac{\vec{V}_0}{2}$ (b) $V_1^2 + V_2^2 = V_0^2$
(c) $\vec{V}_1 + \vec{V}_2 = \vec{V}_0$ (d) $V_1^2 + V_2^2 = \frac{V_0^2}{2}$
14. A particle moves in the first quadrant of the x - y plane under the action of a force. It starts from the origin and moves on the path given by $y = A \tan(x / x_0)$, without turning back at any instant. The only possible time variation of the x -component of velocity v_x out of the four possibilities given below (u and t_0 are positive constants) is
- (a) $v_x = \frac{u}{2} \left[1 + \frac{1}{(1 + t / t_0)^2} \right]$
(b) $v_x = u e^{-t/t_0}$
(c) $v_x = u(1 + t / t_0)$
(d) $v_x = u(2 - e^{-t/t_0})$

15. In a modified experiment, the photoelectric effect was studied with a sample of a multielectron atom. The result is represented by



16. In the following statements,

- A. ideal gases are liquids only at very low temperatures
B. ideal gases cannot be liquefied
C. ideal gas behaviour is observed by real gases at low pressures

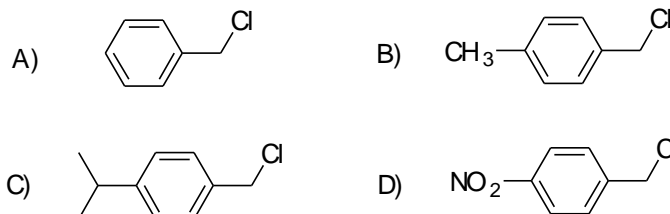
 ISAT 2010	ISAT 2010 INDIAN INSTITUTE OF SPACE SCIENCE AND TECHNOLOGY	Page 7 OF 12
	PAPER I – PHYSICS, CHEMISTRY AND MATHEMATICS	SET - B

D. ideal gases do not exist

The correct statements are

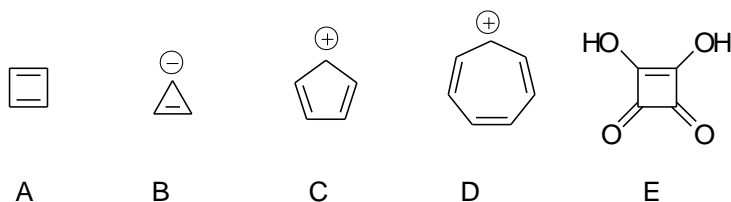
- (a) A, B, C & D
 (b) A, B & C
 (c) B, C & D
 (d) C & D

17. The correct order for the rate of S_N1 reactions for the following compounds is



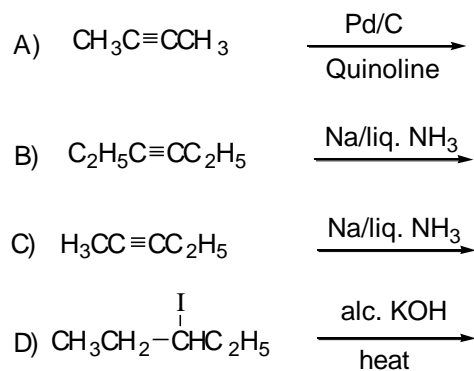
- (a) $D > C > B > A$
 (b) $C > B > D > A$
 (c) $C > B > A > D$
 (d) $B > C > A > D$

18. The aromatic species among the following are



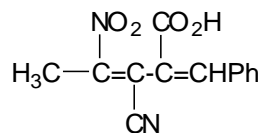
- (a) D & E
 (b) A, B, D & E
 (c) A, B & C
 (d) B, D & E

19. The reactions that give products with dipole moment are



- (a) A & C
 (b) B & C
 (c) B, C & D
 (d) A, C & D

20. The total number of stereoisomers for the following compound is



- (a) 10 (b) 6
(c) 4 (d) 8

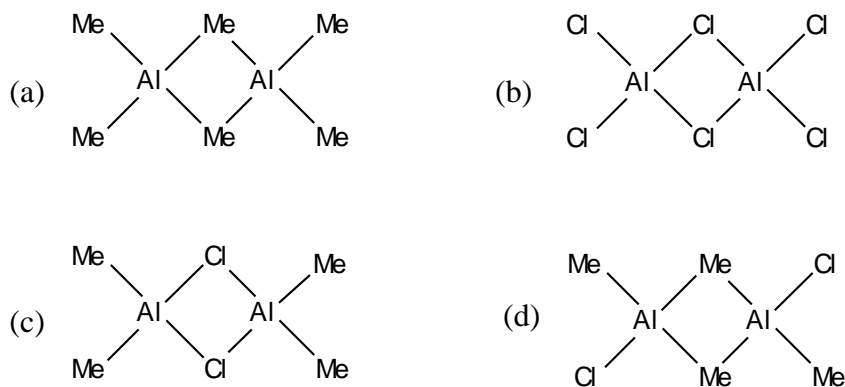
21. The correct order of ligand field strength is

- (a) $\text{H}_2\text{O} < \text{Cl}^- < \text{CO} < \text{NH}_3$ (b) $\text{CO} < \text{NH}_3 < \text{Cl}^- < \text{H}_2\text{O}$
(c) $\text{H}_2\text{O} < \text{CO} < \text{NH}_3 < \text{Cl}^-$ (d) $\text{Cl}^- < \text{H}_2\text{O} < \text{NH}_3 < \text{CO}$

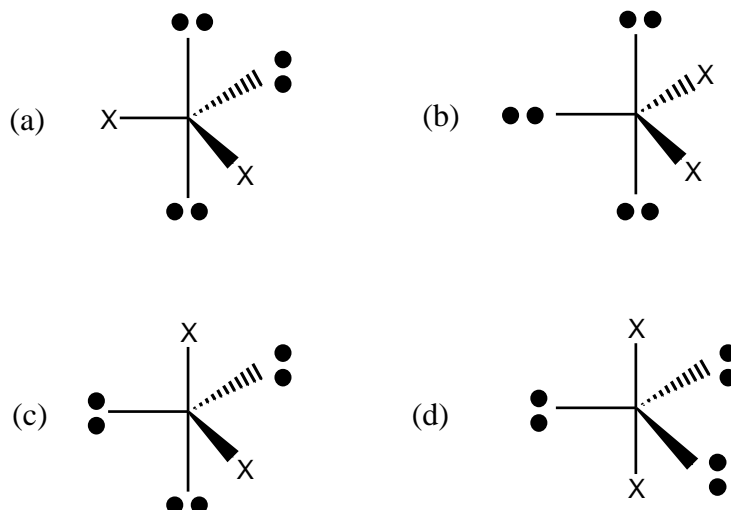
22. The complex exhibiting a spin-only magnetic moment (μ_s) of 2.87 B.M. is


- (a) $[\text{Co}(\text{H}_2\text{O})_3\text{F}_3]$
(b) $\text{K}_4[\text{Fe}(\text{OH})_6]$
(c) $\text{Na}_2[\text{Cr}(\text{NCS})_4(\text{NH}_3)_2]$
(d) $\text{K}_2[\text{MnCl}_4(\text{H}_2\text{O})_2]$

23. The most stable species among the following is



24. According to the VSEPR model, the most stable arrangement is



	ISAT 2010 INDIAN INSTITUTE OF SPACE SCIENCE AND TECHNOLOGY	Page
		9 OF 12
ISAT 2010	PAPER I – PHYSICS, CHEMISTRY AND MATHEMATICS	SET - B

25. Cyclohexanol is converted to Nylon-6 by

- (a) $\text{Na}_2\text{O}/\text{NH}_2\text{OH}/\text{H}^+/250\text{ }^\circ\text{C}$
- (b) $\text{Cu}(250\text{ }^\circ\text{C})/\text{NH}_2\text{OH}/\text{H}^+/250\text{ }^\circ\text{C}$
- (c) $\text{Ag}_2\text{O}/\text{NH}_2\text{OH}/\text{H}^+/250\text{ }^\circ\text{C}$
- (d) $\text{Cu}(250\text{ }^\circ\text{C})/\text{NH}_2\text{OH}/250\text{ }^\circ\text{C}$

26. Some gases in column X may be associated with options in Y.

X	Y
CO₂	M. troposphere
CO	N. stratosphere
SO₂	O. smog
O₃	P. Carboxyhaemoglobin
	Q. photosynthesis
	R. acid rain

The correct answer is

- (a) $\text{SO}_2 \rightarrow \text{M, O \& R}$
- (b) $\text{CO}_2 \rightarrow \text{N, Q \& R}$
- (c) $\text{CO} \rightarrow \text{M, P \& R}$
- (d) $\text{O}_3 \rightarrow \text{N, P \& Q}$

27. A vessel, fitted with a weightless, frictionless piston of 0.025 m^2 area, contains excess con. HCl. The piston moved 1 m outward when 0.075 kg of iron filings were added at 300 K. The solution left behind was found to contain Fe(II). The approximate purity of the iron sample is


- (a) 50 %
- (b) 75 %
- (c) 90 %
- (d) 40 %

28. A solution at 298 K is separated from the pure solvent by a semi-permeable membrane. Difference in the height of the solution and the solvent is 0.9 m. If K_f and freezing point of the solvent are 30 K kg mol^{-1} and 250.3 K, respectively, the temperature at which the solution freezes is

- (a) 250.10 K
- (b) 250.25 K
- (c) 250.20 K
- (d) 250.05 K

29. The number of real roots of the equation in the interval $(1/(x-1)) + (1/(x-2)) + \dots + 1/(x-5) = 1$ in the interval (1,5) is

- (a) 5
- (b) 4
- (c) 3
- (d) 0

	ISAT 2010 INDIAN INSTITUTE OF SPACE SCIENCE AND TECHNOLOGY	Page
		10 OF 12
ISAT 2010	PAPER I – PHYSICS, CHEMISTRY AND MATHEMATICS	SET - B

30. Let y be the solution of the problem $y' - y = 1 + 5e^{-x}$, $y(0) = y_0$. If $\lim_{x \rightarrow \infty} |y(x)|$ is finite, then y_0 is

- a) $-7/2$
- b) 0
- c) 9
- d) -11

31. The distance from a point $(k, 0)$ on the positive x -axis to the tangent to the parabola

$y^2 = 4x$ at $(\frac{1}{4}, 1)$ is $2\sqrt{5}$. Then, the value of k is

- a) $19/4$
- b) $9/4$
- c) $(4\sqrt{5} - 1)/4$
- d) $(2\sqrt{5} - 1)/4$

32. The point $(-3, 2)$ undergoes the following transformations successively:

- (i) Reflection about the line $y = -x$
- (ii) Reflection about the line $x = 0$
- (iii) Translation through a distance of 2 units along the negative direction of y -axis.
- (iv) Rotation through an angle $\pi/4$ in the anti-clockwise direction about the origin.

Then, the position of the point is at


- a) $(-\frac{1}{\sqrt{2}}, -\frac{3}{\sqrt{2}})$
- b) $(-\frac{1}{\sqrt{2}}, \frac{3}{\sqrt{2}})$
- c) $(\frac{1}{\sqrt{2}}, -\frac{3}{\sqrt{2}})$
- d) $(\frac{1}{\sqrt{2}}, \frac{3}{\sqrt{2}})$

33. The equation of the plane passing through the intersection of the planes $x + 2y + z - 1 = 0$ and $2x + y + 3z - 2 = 0$ and perpendicular to the plane $x + y + z - 1 = 0$ is $x + ky + 3z - 1 = 0$. Then, the value of k is

- (a) 4
- (b) -4
- (c) 2
- (d) -2

34. The principal value of $\sin^{-1}(\sin \frac{5\pi}{9} \cos \frac{\pi}{9} + \cos \frac{5\pi}{9} \sin \frac{\pi}{9})$ is

- a) $\frac{2\pi}{3}$
- b) $\frac{\pi}{3}$

	ISAT 2010 INDIAN INSTITUTE OF SPACE SCIENCE AND TECHNOLOGY	Page
		11 OF 12
ISAT 2010	PAPER I – PHYSICS, CHEMISTRY AND MATHEMATICS	SET - B

- c) $\frac{4\pi}{9}$
d) $-\frac{\pi}{6}$

35. Four numbers are chosen at random without replacement from the first 15 natural numbers. Then the probability that their product is even is

- a) $1 - \frac{8C_4}{15C_4}$
b) $\frac{8C_4}{15C_4}$
c) $\frac{7C_4}{15C_4}$
d) $1 - \frac{7C_4}{15C_4}$

36. Let M be a non-singular matrix of order 5×5 . Then, $|\text{adj} M^{-1}|$ is

- a) $|M|^{-4}$
b) $|M|$
c) 1
d) $|M|^4$

37. Let $P = \begin{bmatrix} 1 & 2 & 0 \\ -1 & 1 & 2 \\ 1 & 2 & 1 \end{bmatrix}$ and Q be such that $PQ = I$. Then, the values of λ for which there


exists non-zero $X = \begin{bmatrix} x_1 \\ x_2 \\ x_3 \end{bmatrix}$ satisfying $QX = \lambda X$ are

- a) $\frac{1}{3}, i, -i$
b) $3, i, -i$
c) $i, -i, 1$
d) real numbers

38. The value of the determinant

$$\begin{vmatrix} x & a & a & a & a \\ a & x & a & a & a \\ a & a & x & a & a \\ a & a & a & x & a \\ a & a & a & a & x \end{vmatrix} \quad \text{is}$$

- a) $(x+4a)(x-a)^4$

	ISAT 2010 INDIAN INSTITUTE OF SPACE SCIENCE AND TECHNOLOGY	Page
		12 OF 12
ISAT 2010	PAPER I – PHYSICS, CHEMISTRY AND MATHEMATICS	SET - B

- b) $(x-4a)(x-a)^4$
c) $(x+4a)^2(x-a)^3$
d) $(x-4a)^2(x-a)^3$

39. Let x be the 7^{th} term from the beginning and y be the 7^{th} term from the end in the expansion of $(3^{1/3} + \frac{1}{4^{1/3}})^n$. If $\frac{x}{y} = \frac{1}{12}$, then n is

- (a) 7 (b) 8
(c) 9 (d) 10

40. The number of functions $f: \{1,2,\dots,n\} \rightarrow \{1,2,\dots,m\}$, where m, n are positive integers such that $f(1) = 1$ is

- a) $m^n - m^{n-1}$
b) m^{n-1}
c) $(m-1)^n$
d) n^{m-1}

End of Questions