

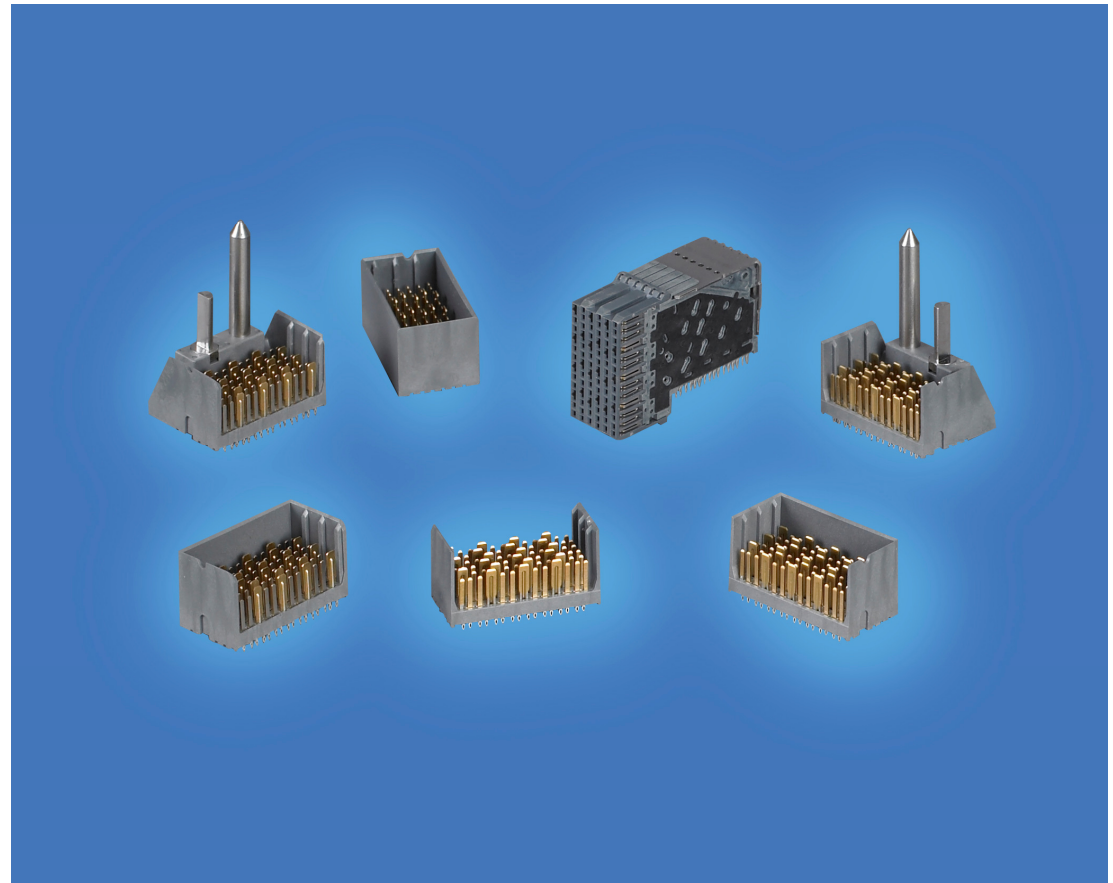


FCI XCede[®] Current Offering

April -2010

Current FCI XCede[®] Product Offering

- 6 and 8 column products offered in 6 housing styles
- 2 wall
- 3 wall right and left
- 4 wall
- 3 wall left and right polarizing guide module



Vertical Header: 4-Pair 8-Column Part Number



1 0 0 9 1 7 6 7 - X 0 **C** - X 0 X L F
 1 0 0 9 1 7 7 7 - X 0 **E** - X 0 X L F

MODULE DESCRIPTION	LETTER DESIGNATION REPRESENTED IN DASH NUMBER										BASE MODULE
LEFT POLARIZING GUIDANCE MODULE	N	J (NO KEY)	A	B	C	D	E	F	G	H	
	NO KEY NO GUIDE PIN										
RIGHT POLARIZING GUIDANCE MODULE	Z	Y (NO KEY)	P	Q	R	S	T	U	V	W	
	NO KEY NO GUIDE PIN										
OPEN MODULE (TWO WALL)	O (ZERO)										
LEFT WALL MODULE	L										
RIGHT WALL MODULE	M										
FOUR WALL MODULE	1										

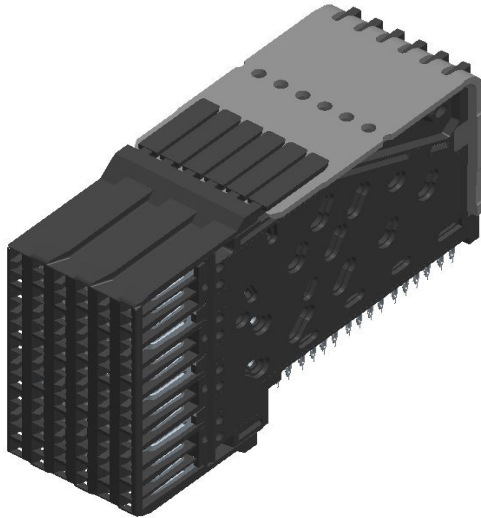
"LF" added for lead-free products

Letter	Plating by Telcordia Application
B	CO
C	UE
D	CO (LF)
E	UE (LF)

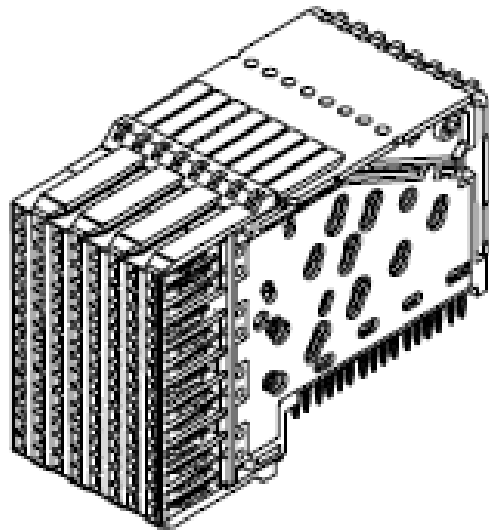
Number	Signal Contact Wipe Length
1	2mm
2	3mm

"C" = 6-Column
 "E" = 8-Column
 Differential Signal Module



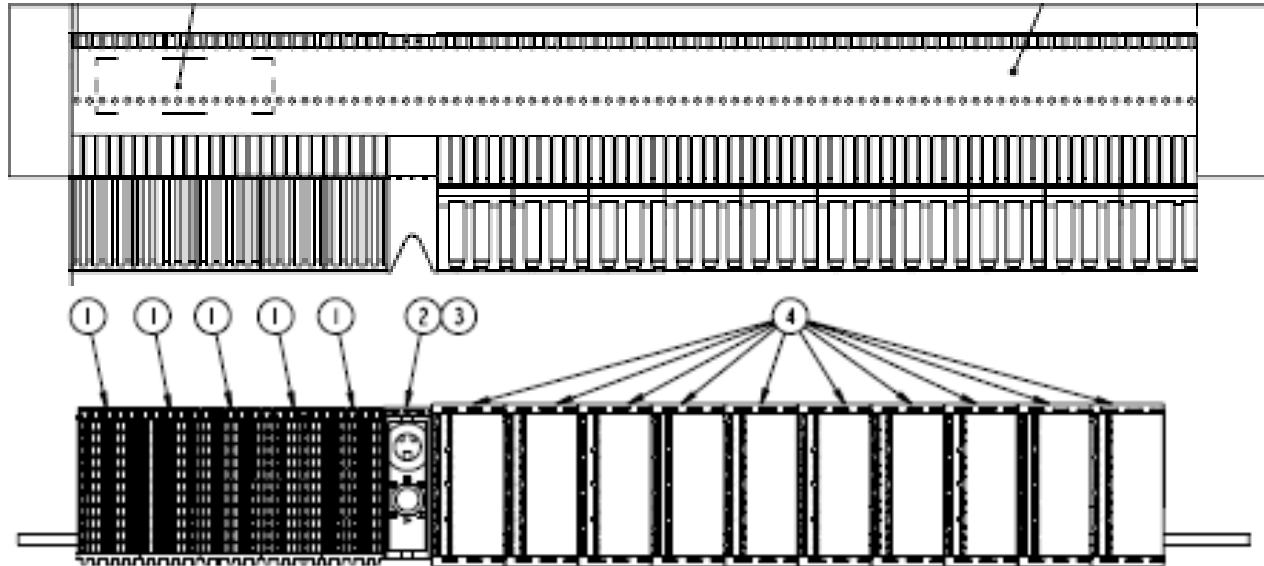


4-Pair 6-Column Receptacle Module		
Part Number	Press-fit finished hole size	Plating by Application
10091799-101	.45mm nominal	Performance-based plating, for Telcordia Central Office (CO)
10091799-101LF	.45mm nominal	



4-Pair 8-Column Receptacle Module		
Part Number	Press-fit finished hole size	Plating by Application
10091812-101	.45mm nominal	Performance-based plating, for Telcordia Central Office (CO)
10091812-101LF	.45mm nominal	

A typical Daughter Card BOM call out on the customer drawing
Notice the mixed technologies



10091854-400		Rev	ATCS CROSS REF (IF APPLICABLE)	
CUSTOMER	sheet 1 of 2	1	DRAWING NO.	REV
			AX400-00114	2.0

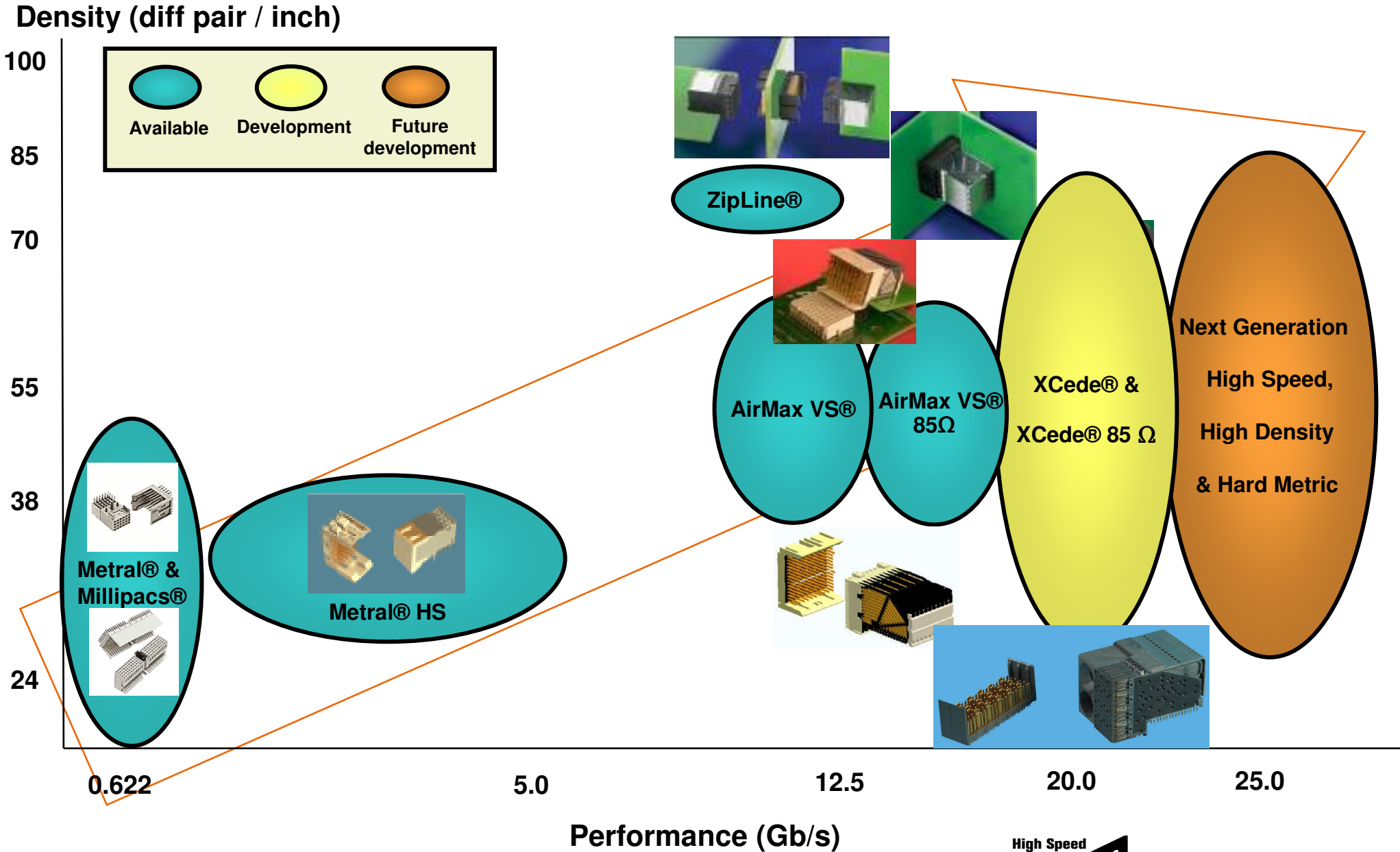
ITEM	PART NUMBER	DESCRIPTION	QTY
1	10091820-101LF	XCede 4-PAIR L-SERIES MODULE, 5-COLUMN	5
2	10091832-101LF	XCede 4-PAIR GUIDE MODULE, STANDARD, W/POST, W/ESD CONTACT, NO KEY	1
3	10091796-001LF	SCREW, PAN-HEAD, SELF-TAPPING, #2-32 THREAD, CROSS-RECESSED, .375" LONG	1
4	10091799-111LF	XCede 4-PAIR 6-COL HSD MODULE	10
5	10091808-F164	XCede 4-PAIR MONOBLOCK ORGANIZER, FLUSH CUT	1

XCede® Hardware Cross-Reference



Hardware Description	Supports Which Gender/Product?	Attaches Which Component?	Comment	ATCS Part Number	FCI Part Number
Guide-Pin, Integral	BP Header			942-4010-00A	10091773-001LF
Guide-Pin, Standalone, Standard Diameter (3.68mm)	BP Header			942-4000-00A	10091775-001LF
Guide-Pin, Standalone, Large Diameter (5.52mm)	BP Header			942-4100-00A	10091775-002LF
Guide-Pin, Standalone, Large Diameter (5.52mm), Long	BP Header			942-4110-00A	10091775-005LF
Polarization Pin, Integral	BP Header			942-4200-00A	10091774-001LF
#2-56 x 0.375" Long Philips Panhead Screw w/Square Conical Washer	BP Header	Std Dia Guide Pin	1.60-4.00mm PCB	577-0014-000	10091790-002LF
#2-56 x 0.5" Long Philips Panhead Screw w/Square Conical Washer	BP Header	Std Dia Guide Pin	4.00-7.50mm PCB	577-0015-000	10091790-003LF
#6-32 x 0.375" Long Philips Panhead Screw w/Square Conical Washer	BP Header	Large Dia Guide Pin	1.60-4.00mm PCB	800-6496-000	10091791-001LF
#6-32 x 0.5" Long Philips Panhead Screw w/Square Conical Washer	BP Header	Large Dia Guide Pin	4.00-7.50mm PCB	800-4135-100	10091791-002LF
#6-32 x 0.625" Long Philips Panhead Screw w/Square Conical Washer	BP Header	Large Dia Guide Pin	7.50-10.00mm PCB	800-4147-100	10091791-003LF
Cross-Recessed Pan Head Screw, SS, Self-tapping, #2-32 x 3/8" Long	DC Receptacle	Guide Module		800-2002-000	10091796-001LF

HSBP Connector Roadmap



- XCede® specification information
- All specifications are currently in “preliminary” status until intermatability qualification is successfully completed
 - Product Specification – GS-12-588
 - Product Application Specification – GS-20-121
 - Test Reports and certifications will be posted to the FCI website as we receive them
 - Preliminary datasheet – ELXXCEDE0110ELT
- Preliminary Product Drawings – Available from the FCI website
 - 4 pair 6 column Vertical headers – 10091767
 - 4 pair 8 column Vertical headers – 10091777
 - 4 pair 6 column R/A Receptacle – 10091799
 - 4 pair 6 column R/A Receptacle – 10091812
- Step models are available
- Product plating qualified to Telcordia GR-1217-CORE and is available with tin-lead or lead-free (LF) tails
- Most of the items listed above can be found at the FCI Website. Copy and paste the link below
 - <http://portal.fciconnect.com/portal/page/portal/FcicntPublic/HighSpeedNewDevelopment>