

BANK OF INDIA CLERK EXAM (26-09-2010)

TEST-I
REASONING ABILITY AND
NUMERICAL APTITUDE

1. If each of the alphabets in the word FAINTED is arranged in alphabetical order from left to right and then each vowel is changed to the next letter in the English alphabetical series and each consonant is changed to the previous letter in the English alphabetical series, which of the following will be exactly in the middle of the new arrangement thus formed ?
 (1) F (2) E
 (3) J (4) I
 (5) O
2. In a certain code 'FAITH' is coded as 'HCKVJ' and 'NIGHT' is coded as 'PKIJV'. In the same code '____' will be coded as 'MTGOR'.
 (1) KRONP (2) OVSQT
 (3) TQSVQ (4) PMORK
 (5) KROMP
3. The positions of how many alphabets will remain the same if each of the alphabets in the word FRIENDS is rearranged in the alphabetical order from left to right ?
 (1) None (2) One
 (3) Two (4) Three
 (5) More than three
4. Town D is 12 km. towards the North of town A. Town C is 15km. towards the West of town D. Town B is 15 km. towards the West of town A. How far and in which direction is town B from town C ?
 (1) 15 km. towards North
 (2) 12 km. towards North
 (3) 3 km. towards South
 (4) 12 km. towards South
 (5) Cannot be determined
5. Which of the following will come in place of the question mark ?
 XVU WUT VTS USR ?
 (1) TSQ (2) SQP
 (3) TVW (4) TRQ
 (5) QON

6. '1' is subtracted from each odd digit and '1' is added to each even digit in the number 4873529. Which of the following will be the difference between the second digit from the left and the third digit from the right of the new number thus formed ?
 (1) 4 (2) 3
 (3) 5 (4) 2
 (5) 6
7. In a certain code language 'it is dark outside' is written as 'ha no ti ju', 'is it still raining' is written as 'pa ha da no' and 'go and play outside' is written as 'su ju ye la'. How is 'dark' written in that code language ?
 (1) ha (2) ti
 (3) su (4) ye
 (5) no
8. Sneha correctly remembers that last time when she travelled in the bus, she paid less than Rs. 10 but more than Rs. 4 for the ticket. Meenal correctly remembers that she paid more than Rs. 6 but less than Rs. 14 for the same distance. The conductor of the bus correctly mentions that the fare for that distance is not an odd number. Which of the following is definitely the fare for that particular distance ?
 (1) Rs. 8 (2) Rs. 6
 (3) Rs. 2 (4) Rs. 12
 (5) Rs. 9
9. How many meaningful English words can be formed with the letters SWA using each letter only once in each word?
 (1) None (2) One
 (3) Two (4) Three
 (5) More than three
10. In an exam, A, B, C and D each scored different marks. B scored more than C and D. No one scored less than A. Who amongst them scored the maximum marks ?
 (1) B (2) Either C or D

- (3) D
- (4) Cannot be determined
- (5) None of these

Directions (11-15) : In each question below are three statements followed by two Conclusions numbered I and II. You have to take the three given statements to be true even if they seem to be at variance from commonly known facts and then decide which of the given Conclusions logically follows from the three statements disregarding commonly known facts.

Give answer (1) if only Conclusion I follows.

Give answer (2) if only Conclusion II follows.

Give answer (3) if either Conclusion I or Conclusion II follows.

Give answer (4) if neither Conclusion I nor Conclusion II follows.

Give answer (5) if both Conclusions I and II follow.

11. Statements :

- Some leaves are roots.
- Some roots are stems.
- All flowers are stems.

Conclusions :

- I. No flower is a leaf.
- II. Some leaves are stems.

12. Statements :

- All numbers are digits.
- All alphabets are numbers.
- All words are alphabets.

Conclusions :

- I. All words are digits.
- II. Some numbers are not words.

13. Statements :

- All plastics are wood.
- No wood is a metal.
- Some metals are gases.

Conclusions :

- I. No plastic is a metal.
- II. Some gases are plastic.

14. Statements :

- All stars are moons.
- All moons are dust.
- All asteroids are dust.

Conclusions :

- I. Some moons are asteroids.
- II. All stars are dust.

15. Statements :

- All umbrellas are rains.
- Some rains are clouds.
- All clouds are storms.

Conclusions :

- I. Some storms are umbrellas.
- II. Some storms are not rains.

Directions (16-20) : Following questions are based on the five three digit numbers given below :

473 169 825 692 538

16. If two is subtracted from the middle digit of each of the numbers, how many numbers thus formed will be divisible by three ?

- (1) None
- (2) One
- (3) Two
- (4) Three
- (5) Four

17. If all the digits in each of the numbers is arranged in descending order within the number, which of the following will form the lowest number in the new arrangement of numbers ?

- (1) 473
- (2) 169
- (3) 825
- (4) 692
- (5) 538

18. If all the numbers are arranged in ascending order from left to right, which of the following will be the product of the second and the third digits of the number which is second from the left end of the new arrangement ?

- (1) 18
- (2) 54
- (3) 24
- (4) 21
- (5) 10

19. If the positions of the first and the third digits of each of the numbers are interchanged, in how many numbers thus formed will the third digit be a perfect square ? ('1' is also a perfect square).

- (1) None
- (2) One
- (3) Two
- (4) Three
- (5) Four

20. What will be the resultant if second digit of the lowest number is divided by the second digit of the highest number ?

- (1) 4
- (2) 2.5

(3) 1

(4) 5

(5) 3

Directions (21 - 25) : Study the following information carefully and answer the given questions.

A, B, C, D, E, F, G and H are sitting around a circular table facing the centre.

- (a) B sits third to right of F.
- (b) A sits second to the right of D. D is not an immediate neighbour of B and F.
- (c) C and E are immediate neighbours of each other.
- (d) H is not an immediate neighbour of A.
- (e) No one sits between C and F.

21. Four of the following five are similar in a certain way based on their position in the seating arrangement and so form a group. Which of the following **does not** belong to that group ?

- (1) DA
- (2) BC
- (3) HG
- (4) AC
- (5) BD

22. Who sits to the immediate left of B ?

- (1) H
- (2) G
- (3) A
- (4) E
- (5) None of these

23. What is the position of D with respect to E in the above arrangement ?

- (1) Third to the right
- (2) Fourth to the left
- (3) Second to the right
- (4) Fourth to the right
- (5) Immediately to the right

24. In which of the following pairs, second person is sitting to the immediate right of the first person?

- (1) FA
- (2) BE
- (3) AD
- (4) HB
- (5) None of these

25. Who amongst the following sits between G and F ?

- (1) A
- (2) C
- (3) E
- (4) H
- (5) None of these

Directions (26-30) : Study the following arrangement carefully and answer the questions given below :

CUBAEDE'DABEBAUCD
BCADBDUBCACBEDA

26. How many such pairs of alphabets are there in the series of alphabets given in **BOLD** in the above arrangement each of which has as many letters between them (in both forward and backward directions) as they have between them in the English alphabetical series ?

- (1) None
- (2) One
- (3) Two
- (4) Three
- (5) More than three

27. Which of the following is the fifth to the left of the sixteenth from the left end of the above arrangement ?

- (1) E
- (2) B
- (3) D
- (4) C
- (5) A

28. How many meaningful words can be formed with the alphabets which are second, sixth, and seventh from the left end of the above arrangement ?

- (1) None
- (2) One
- (3) Two
- (4) Three
- (5) More than three

29. If all the A's are dropped from the above arrangement, which of the following will be eleventh from the left end of the above arrangement ?

- (1) E
- (2) C
- (3) D
- (4) U
- (5) None of these

30. How many such vowels are there in the above arrangement each of which is immediately preceded by a vowel and also immediately followed by a consonant ?

- (1) One
- (2) Two
- (3) Three
- (4) Four
- (5) More than Four

Directions (31-35) : Study the following information carefully and answer the given questions.

L, P, Q, R, S, T and W are sitting in a straight line facing North.

(a) P sits fourth to the left of L and L sits second to the left of Q.

(b) R, who is not an immediate neighbour of L, sits to the immediate right of S.

(c) T sits second to the left of W.

31. Which of the following pairs sits at the extreme corners of the line ?

- (1) S, L
- (2) P, Q
- (3) W, Q
- (4) S, T
- (5) None of these

32. How many persons sit between R and W ?

- (1) None (2) One
(3) Two (4) Three
(5) Four

33. What is the position of L with respect to S ?

- (1) Third to the left
(2) Third to the right
(3) Immediately to the right
(4) Fourth to the left
(5) Immediately to the left

34. Four of the following five are alike in a certain way based on their seating positions in the above arrangement and so form a group. Which is the one that **does not** belong to that group?

- (1) PR (2) ST
(3) LQ (4) LR
(5) TW

35. If all the persons are made to sit in alphabetical order from left to right, the positions of how many will remain unchanged as compared to the original seating positions ?

- (1) None (2) One
(3) Two (4) Three
(5) Four

Directions (36-40) : In each question below is given a group of letters followed by five combinations of number/symbol codes numbered (1), (2), (3), (4) and (5). You have to find out which of the combinations correctly represents the groups of letters based on the following coding system and the conditions and mark the number of that combination as your answer :

Letters	H	U	I	F	M	T	C	W	E	B	Q	K	R	P	A
Code	6	#	7	@	\$	5	3	*	@	2	4	%	β	8	9

Conditions :

- (i) If both the first and the last elements are consonants, both these are to be coded as the code for the fifth element.
- (ii) If the third element is a consonant and the fourth a vowel, the codes for both these are to be interchanged.
- (iii) If both the second and the fifth elements are vowels, the second element is to be coded as the code for the last element.

36. WUTABE

- (1) ★#295@ (2) ★#952@
(3) ★#592@ (4) ★#992@
(5) @#952★

37. MACBEU

- (1) \$932@9 (2) \$#@32#
(3) \$#32## (4) \$#32@#
(5) \$#3@2#

38. HEITQK

- (1) 4@5744 (2) 6@7544
(3) 6@754% (4) 4@7546
(5) 4@7544

39. QEPMUA

- (1) 4@8\$#9 (2) 498\$#@
(3) 498\$#9 (4) 49#8\$9
(5) 4@8\$#@

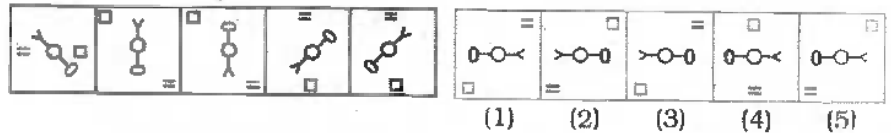
40. IREPAH

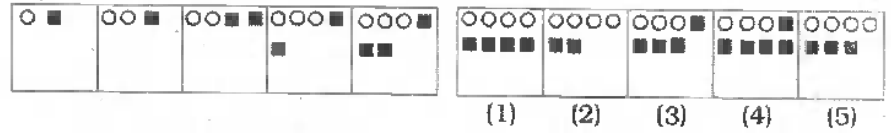
- (1) 9β@899 (2) 7β8@96
(3) 7β@896 (4) 76@896
(5) 7β89@6

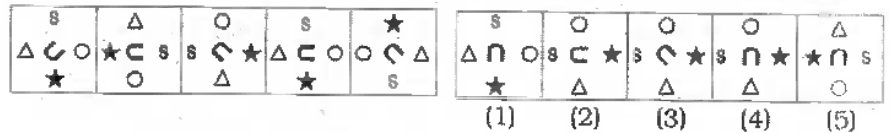
Directions (41 - 50) : In each of the questions given below which one of the five answer figures on the right should come after the problem figures on the left, if the sequence were continued ?

Problem Figures

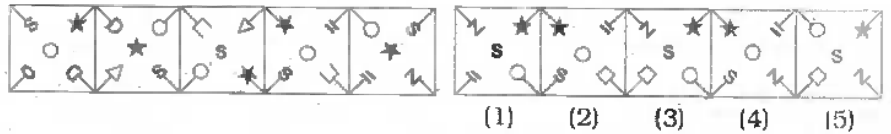
Answer Figures

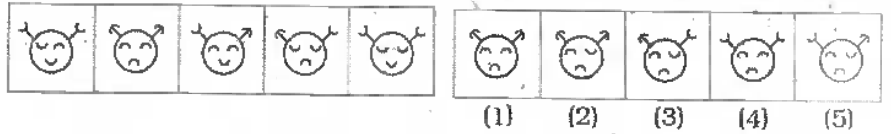
41. 

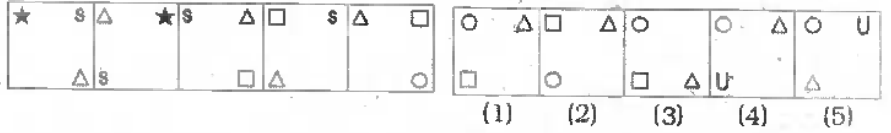
42. 

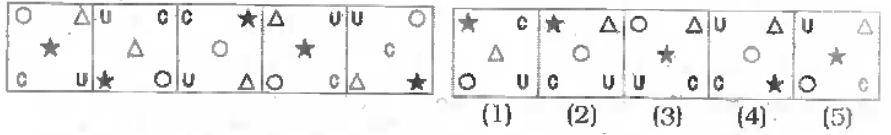
43. 

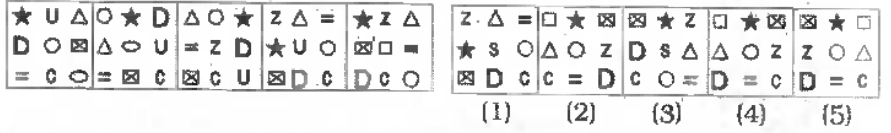
44. 

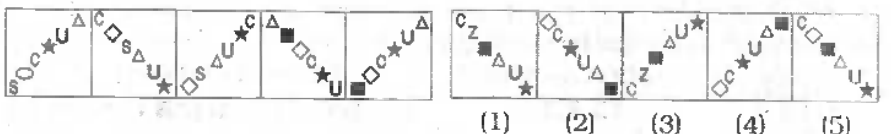
45. 

46. 

47. 

48. 

49. 

50. 

Directions (51 - 75) : What will come in place of question mark (?) in the following questions ?

51. $26 \times 9 + 164 + 65 = 132 + ?$

- (1) 464 (2) 432
(3) 327 (4) 331
(5) None of these

52. $15\% \text{ of } 640 - 16\% \text{ of } 750 = ?$

- (1) -24 (2) -16
(3) 26 (4) 16
(5) None of these

53. $78 \times 5 \div 2 - 26 = (?)^2$

- (1) $\sqrt{13}$ (2) 26
(3) $\sqrt{26}$ (4) $(13)^2$
(5) -13

54. $2\frac{1}{2}$ of $1\frac{1}{3}$ of (?) = 340

- (1) 102 (2) 124
(3) 120 (4) 108
(5) None of these

55. $1\frac{1}{6} - 1\frac{1}{9} + 1\frac{1}{54} = ?$

- (1) $1\frac{1}{54}$ (2) $1\frac{2}{27}$
(3) $1\frac{1}{27}$ (4) $1\frac{5}{54}$
(5) None of these

56. $\frac{96}{16} \times \frac{64}{21} + \frac{60}{42} = ?$

- (1) $12\frac{1}{5}$ (2) $12\frac{3}{5}$
(3) $12\frac{4}{5}$ (4) $12\frac{2}{5}$
(5) None of these

57. $48\% \text{ of } ? + 95 = 359$

- (1) 750 (2) 850
(3) 550 (4) 650
(5) None of these

58. $69.39 - 58.46 + 79.98 = ? + 76.92$

- (1) 11.74
(2) 13.99
(3) 15.69
(4) 17.74
(5) None of these

59. $(40.5 \times 7 \times 4) \div 6 - (8)^2 = (?)^3$

- (1) $(5)^3$ (2) $\sqrt{5}$
(3) 25 (4) 5
(5) None of these

60. $0.5 \times 5.6 \div 0.5 \times 15 = ?$

- (1) 94 (2) 82
(3) 48 (4) 86
(5) None of these

61. $5566 - 7788 + 9988 = ? + 4444$

- (1) 3223 (2) 3333
(3) 3232 (4) 3322
(5) None of these

62. $56 \times 15 \div 3 - 83 = ? - 139$

- (1) 314 (2) 334
(3) 316 (4) 336
(5) None of these

63. $545 - 354 + 434 = ? + (8)^2$

- (1) 541 (2) 652
(3) 561 (4) 632
(5) None of these

64. $(6)^4 \div (36)^3 \times 216 = 6^{(7-5)}$

- (1) 4 (2) 6
(3) 7 (4) 1
(5) None of these

65. $(161 - 231) \div 7 = ? \div (-4)$

- (1) 10 (2) -10
(3) -40 (4) 40
(5) None of these

66. $31.74 - 22.66 + 15.19 = ?$

- (1) 24.27 (2) 23.52
(3) 24.52 (4) 23.27
(5) None of these

67. $(17 \times 5) - (12 \times 4) - 16 = ? \div 7$

- (1) 121 (2) 3
(3) 49 (4) 142
(5) None of these

68. $? \% \text{ of } 600 + (10)^2 = 352$

- (1) 46 (2) 42
(3) 52 (4) 56
(5) None of these

69. $\frac{5}{12}$ of 56% of 750 = ?

- (1) 160 (2) 155
(3) 165 (4) 170
(5) None of these

70. $\frac{5}{12} + \frac{5}{36} + \frac{5}{24} = ?$

- (1) $\frac{55}{72}$ (2) $\frac{11}{36}$
(3) $\frac{5}{48}$ (4) $\frac{5}{72}$
(5) None of these

71. $341.42 - 53.74 = ? - 62.86$

- (1) 260.44 (2) 340.44

(3) 350.54

(4) 450.54

(5) None of these

72. $\frac{3}{19}$ of $\frac{6}{15}$ of 855 = ?

- (1) 108 (2) 54
(3) 27 (4) 81
(5) None of these

73. $\sqrt{12 \times 184 + 23 + 26 - 73} = ?$

- (1) $\sqrt{7}$ (2) $(7)^2$
(3) 7 (4) $(49)^2$
(5) None of these

74. $(2 \times 3)^4 \div (9 \times 4) \div 4 = ?$

- (1) 3 (2) 9
(3) 6 (4) 12^3
(5) None of these

75. $(13)^2 - (4)^3 - \sqrt{676} + 2 = (?)^2$

- (1) 3 (2) 9
(3) 81 (4) 27
(5) 18

76. The sum of five consecutive even numbers is equal to 230. What is the sum of the largest number amongst them and the square of the smallest number amongst them?

- (1) 1684 (2) 1464
(3) 1784 (4) 1844
(5) None of these

77. How many bags are required for filling 1026 kgs. of rice if each bag is filled with 114 kgs. of rice?

- (1) 19 (2) 15
(3) 7 (4) 9
(5) None of these

78. What is fifty five percent of two-fifth of 1200 ?

- (1) 284 (2) 246
(3) 264 (4) 254
(5) None of these

79. The area of a square is three-fifth the area of a rectangle. The length of the rectangle is 25 cms. and its breadth is 10 cms less than its length. What is the perimeter of the square ?

- (1) 60 cms.
(2) 80 cms.
(3) 44 cms.
(4) Cannot be determined
(5) None of these

80. Raju purchased an item for Rs. 8,200 and sold it at the gain of 25%. From that amount he purchased another item and sold it at the loss of 20%. What is his overall gain/loss ?
 (1) Loss of Rs. 140
 (2) Gain of Rs. 120
 (3) Loss of Rs. 150
 (4) Neither gain nor loss
 (5) None of these
81. Puja's monthly income is two-third Dev's monthly income. Dev's monthly income is Rs. 36,000. What is Puja's annual income ?
 (1) Rs. 2.80 Lacs
 (2) Rs. 2.88 Lacs
 (3) Rs. 3.60 Lacs
 (4) Rs. 3.80 Lacs
 (5) None of these
82. The length of a rectangle is 16 cms. Which is 2 cms. more than the diameter of a circle. What is the area of the circle ?
 (1) 112 Sq. cms.
 (2) 176 Sq. cms.
 (3) 161 Sq. cms.
 (4) 132 Sq. cms.
 (5) None of these
83. The simple interest accrued in 4 years on a principal of Rs. 25,000 is two-tenth the principal. What is the rate of simple interest per cent per annum ?
 (1) 5 (2) 4
 (3) 6 (4) 2
 (5) None of these
84. Six men can complete a piece of work in 32 hours. In how many hours will 16 men complete the same piece of work ?
 (1) 18 (2) 16
 (3) 12 (4) 24
 (5) None of these
85. The body weight of six boys is recorded as 54 kgs., 64 kgs., 75 kgs., 67 kgs., 45 kgs., and 91 kgs. What is the average body weight of all six boys ?
 (1) 72 kgs. (2) 62 kgs.
 (3) 76 kgs. (4) 66 kgs.
 (5) None of these
86. The ratio between the present ages of Indira and Lizzy is 3:8 respectively. After eight years Indira's age will be 20 years. What was Lizzy's age 5 years ago ?

- (1) 37 years (2) 27 years
 (3) 28 years (4) 38 years
 (5) None of these

87. The average speed of a train is $4\frac{1}{2}$ times the average speed of a tractor. The tractor covers 384 kms. in 16 hours. How much distance will the train cover in 12 hours ?
 (1) 1396 kms. (2) 1296 kms.
 (3) 1406 kms. (4) 1460 kms.
 (5) None of these
88. What value will be obtained if the square of 23 is subtracted from the cube of 9 ?
 (1) 140 (2) 300
 (3) 200 (4) 240
 (5) None of these
89. What will come in place of both the question marks (?) in the following questions ?

$$\frac{(?)^{2/3}}{42} = \frac{5}{(?)^{1/3}}$$
 (1) 20 (2) 210
 (3) $10\sqrt{2}$ (4) 10
 (5) $\sqrt{20}$
90. Out of the fractions $\frac{3}{7}, \frac{4}{9}, \frac{5}{11}, \frac{7}{12}$ and $\frac{8}{15}$ which is the second highest fraction ?
 (1) $\frac{3}{7}$ (2) $\frac{4}{9}$
 (3) $\frac{5}{11}$ (4) $\frac{7}{12}$
 (5) $\frac{8}{15}$
91. Rajeev consistently runs 415 meters every day except on Sunday when he runs 500 meters. How many kilometers will he run in two weeks ? (in this question week starts from Monday)
 (1) 5.98 kms. (2) 5.86 kms.
 (3) 5.96 kms. (4) 5.88 kms.
 (5) None of these
92. Amit got 44 marks in Hindi, 55 marks in Science, 77 marks in Maths, 79 marks in Social Science and 76 marks in English. The maximum marks of each subject are 100. How much overall percentage of marks did he get ?

- (1) 66.2 (2) 64.2
 (3) 72.2 (4) 74.2
 (5) None of these

Directions (93 - 95) : What will come in place of question mark (?) in the following number series ?

93. 7 11 19 35 67 (?)
 (1) 121 (2) 153
 (3) 141 (4) 133
 (5) None of these
94. 5 6 10 19 35 (?)
 (1) 55 (2) 65
 (3) 60 (4) 70
 (5) None of these
95. 1 3 8 18 35 (?)
 (1) 61 (2) 72
 (3) 67 (4) 52
 (5) 71

Directions (96 - 100) : In each of these questions an equation is given with a question mark (?) in place of a correct symbol. Based on the values on the right hand side and the left hand side of the question mark, you have to decide which of the following symbols will come in place of the question mark.

Give answer If in place of question mark (?) following will come

- (1) > (greater than)
 (2) = (equal to)
 (3) < (lesser than)
 (4) \geq (either greater than or equal to)
 (5) \leq (either lesser than or equal to)

96. $[(7 \times 3) + 12] ? [\sqrt{225} + 15]$
 97. $\pm[(\sqrt{324} - \sqrt{49})] ? [\sqrt{121}]$
 98. $[(34 - (2)^2) \times 5] ? [4^2 \times 8 + (4 \times 4)]$
 99. $[133 - (88 - 72)] ? [(7)^2 \times 3]$
 100. $[(21 \div 3) + (54 \div 9)] ? [(160 - 60) \div 4]$

TEST-II : CLERICAL APTITUDE

Directions (101 - 135) : In each question below a combination of Name and Address is given in the first column which is unnumbered at the left followed by four such combinations one each under the columns (1), (2), (3) and (4). You have to find out the combination which is exactly the same as the combination in the first unnumbered column. The number of that column which contains that combination is the answer. If all the combinations are different, the answer is (5), i.e., 'None'.

	(1)	(2)	(3)	(4)	(5)
101. Tania Moses 72/21-C Narpoli Bhiwandi-16	Tanya Moses 72/21-C Narpoli Bhiwandi-16	Tania Moses 72/21-D Narpoli Bhiwandi-16	Tania Moses 72/21-C Narpoli Bhiwandi-16	Tania Moses 72/21-C Narpoli Bhiwandi-16	None
102. Thomas Mathew Janata Nagar Tardeo-4002216	Thomas Mathew Janata Nagar Tardeo-4002216	Tomas Mathew Janata Nagar Tardeo-4002216	Thomas Mathew Janta Nagar Tardeo-4002216	Thomas Mathew Janata Nagar Tardio-4002216	None
103. Janet D'Souza Pundalik Nagar Atto Betim/20	Jannet D'Souza Pundalik Nagar Atto Betim/20	Janet D'Souza Pundalic Nagar Atto Betim/20	Janet D'Souza Pundalik Nagar Atto Betim/20	Janet D'Souza Pundalik Nagar Atto Betim/30	None
104. Manshad S.V.M. Janakalyan Nagar Malad (W) 400126	Manshaad S.V.M. Janakalyan Nagar Malad (W) 400126	Manshad S.V.M. Janakalyan Nagar Malad (W) 400126	Manshad S.V.M. Janakalyan Magar Malad (W) 400126	Manshad S.V.M. Janakalyan Nagar Malad (E) 400126	None
105. Rakesh Bhatia Jacob Circle-VI Mahalaxmi	Rajesh Bhatia Jacob Circle-VI Mahalaxmi	Rakesh Bhatia Jacob Circle-VI Mahalakshmi	Rakesh Bhatia Jacob Circle-VI Mahalaxmi	Rakesh Bhatia Jacob Circle-IV Mahalaxmi	None
106. Sunita Nair Cumballa Hill Rd. Fax 39462484	Sunita Naie Cumballa Hill Rd. Fax 39462484	Sunita Nair Cumballa Hill Rd. Fax 39462484	Sunita Nair Cumballa Hill Rd. Tel 39462484	Sunita Nair Kumballa Hill Rd. Fax 39462484	None
107. Brijesh Shetty Duler Road-56 Mapusa-400511	Brijesh Shetty Duler Road-56 Maposa-400511	Brijesh Shetty Duler Road-65 Mapusa-400511	Brijesh Shette Duler Road-56 Mapusa-400511	Brijesh Shetty Duler Road-56 Mapusa-400511	None
108. Harshdeep M.P. H. No. 51, Jadhav Johnson Park	Harshdeep M.P. H. No. 51, Jadhav Johnson Park	Harshdip M.P. H. No. 51, Jadhav Johnson Park	Harshdeep M.P. H. No. 53, Jadhav Johnson Park	Harshdeep M.P. H. No. 51, Jadhav Johnson Parc	None
109. Samuel Torcato Dahanukar Rd. New Delhi 23	Samuel Torcato Dahanukar Rd. New Delhi 23	Samuel Tornato Dahanukar Rd. New Delhi 23	Samuel Torcato Dhanukar Rd. New Delhi 23	Samuel Torcato Dahanukar Rd. New Delhi 32	None
110. Manoj Sharma Anand Bhavan-14 Pin 400801	Manoj Sarma Anand Bhavan-14 Pin 400801	Manoj Sharma Anand Bhavan-14 Ph 400801	Manoj Sharma Anand Bhavan-14 Pin 400801	Manoj Varma Anand Bhavan-14 Pin 400801	None
111. Maria Fonseca CHOGM Rd.-07 Ph. 9820182686	Faria Monseca CHOGM Rd.-07 Ph. 9820182686	Maria Fonseca CHOGM Rd.-07 Ph. 9820182686	Moria Fonseca CHOGM Rd.-07 Ph. 9820182686	Maria Fonseca CHOGM Rd.-70 Ph. 9820182686	None
112. Nilesh Porab Pant Nagar Tel. 22664301	Nilesh Porab Patna Nagar Tel. 22664301	Nilesh Porab Pant Nagar Fax. 22664301	Nilesh Purab Pant Nagar Tel. 22664301	Nilesh Porab Pant Nagar Tel. 22664301	None
113. Umakant Shankar Kala Academy Panaji 405116	Umacant Shankar Kala Academy Panaji 405116	Umakant Shankar Kala Academy Panaji 405116	Umakant Shankar Khala Academy Panaji 405116	Umakant Shanker Kala Academy Panaji 405116	None
114. Vishal Gadre Amrut Nagar Wing-IV/C	Vishal Ghadre Amrut Nagar Wing-IV/C	Vishal Gadre Amrit Nagar Wing-IV/C	Vishal Gadre Amrut Nagar Wing-VI/C	Vishal Gadre Amrut Nagar Wing-IV/C	None

115.	Jayesh H.T. Pashan Gaon Tel. 2409077	Jayesh H.T. Pashan Gaon Tel. 2409077	Jayeesh H.T. Pashan Gaon Tel. 2409077	Jayesh H.T. Pashan Gaon Tel. 2409077	Jayesh H.T. Pashan Gaon Ph. 2409077	None
116.	Sanchita Naik Khadki Bazaar II Pune 590038	Sanchita Naik Khadki Bazar II Pune 590038	Sanchita Nair Khadki Bazaar II Pune 590038	Sanchita Naik Khadki Bazaar II Pune 590038	Sanchita Naik Khadki Bazaar II Puna 590038	None
117.	Alisha Shaw Golegaon-IV M. 9766201432	Alisha Shaw Golegaon-IV M. 9766201432	Ayesha Shaw Golegaon-IV M. 9766201432	Alisha Shaw Golegaon-VI M. 9766201432	Alisha Shaw Golegaon-IV M. 9766201234	None
118.	Amanda Rajesh Belgium Embassy Ph. 9920621825	Ananda Rajesh Belgium Embassy Ph. 9920621825	Amanda Rajesh Belgaum Embassy Ph. 9920621825	Amanda Rajesh Belgium Embassy Ph. 9920621825	Amanda Rajesh Belgium Embassy Ph. 9920621825	None
119.	Tony Dcosta Jairampura, 15 J. Sikar Road	Sony Dcosta Jairampura, 15 J. Sikar Road	Tony Dcosta Jairampura, 15 J. Sikar Road	Tony Dcosta Jairampura, 51 J. Sikar Road	Tony Dcosta Jairampura, 15 J. Sikhhar Road	None
120.	Dr. Sawant V.N. Sangavade, 14 Pin. 630001	Dr. Sawant V.M. Sangavade. 14 Pin. 630001	Dr. Sawant V.N. Sangavade, 41 Pin. 630001	Dr. Sawant V.N. Sangavade. 14 Tel. 630001	Dr. Sawant V.N. Sangavade, 14 Pin. 630001	None
121.	Veeneta George Jaslok Hospital Peddar Road 451	Vineta George Jaslok Hospital Peddar Road 451	Veeneta George Jasloc Hospital Peddar Road 451	Veeneta George Jaslok Hospital Peddar Road 451	Veeneta George Jaslok Hospital Poddar Road 451	None
122.	Kavita Nazareth Sri Rama Nagar Hyderabad-28	Kavita Nazareth Sri Rama Nagar Hyderabad-82	Kavita Nazareth Sri Rama Nagar Hyderabad-28	Kavita Nazareth Sri Rama Nager Hyderabad-28	Kavita Nazaret Sri Rama Nagar Hyderabad-28	None
123.	Alisha Gouaco Kadakanchi Marg M. 9324018605	Amisha Gouaco Kadakanchi Marg M. 9324018605	Alisha Gouaco Kalakanchi Marg M. 9324018605	Alisha Gouaco Kadakanchi Marg M. 9324018506	Alisha Gouaco Kadakanchi Marg M. 9324018605	None
124.	Shobha Shetty Himayat Sagar M. 9742027163	Shobha Shetty Himayat Sagar M. 9742027163	Shobhna Shetty Himayat Sagar M. 9742027163	Shobha Shetty Himayat Nagar M. 9742027163	Shobha Shetty Himalaya Sagar M. 9742027163	None
125.	Neeta Chauhan Amanova IV/B Park Town	Needhi Chauhan Amanova IV/B Park Town	Neeta Chauhan Amanova IV/D Park Town	Neeta Chauhan Amanova IV/B Mark Town	Neeta Chauhan Amanova IV/B Park Town	None
126.	Khartik Kalaga Sun Villa-32 Sector No. 6	Khartik Kalaga Sun Villa-32 Sector No. 6	Kartik Kalaga Sun Villa-32 Sector No. 6	Khartik Kalaga Sun Villa-23 Sector No. 6	Khartik Kalaga Sun Villa-32 Block No. 6	None
127.	Ivan Pinto M Kaladera Jaipur-631001	Ivan M Pinto Kaladera Jaipur-631001	Ivan Pinto M Kaladera Jaipur-631001	Ivan Pinto M Kaladesa Jaipur-631001	Ivan Pinto M Kaladera Jaipura-631001	None
128.	Suchita Roy Tonk Phatak D-Block NM8	Suchita Roy Tonc Phatak D-Block NM8	Suchita Roy Tonk Phatak D-Block NM6	Suchita Roy Tonk Phatak D-Block NM8	Suchita Ray Tonk Phatak D-Block NM8	None
129.	Niraj M. Joshi 18, June Road IV Avenue Panaji	Niraj M. Joshi 18, June Road IV Avenue Panaji	Niraj N. Joshi 18, June Road IV Avenue Panaji	Niraj M. Joshi 18, Juna Road IV Avenue Panaji	Niraj M. Joshi 18, June Road IV Avenue Punaji	None
130.	Kunal Mehta 15, M.G. Road Aurangabad-42	Kuntal Mehta 15, M.G. Road Aurangabad-42	Kunal Mehta 51, M.G. Road Aurangabad-42	Kunal Mehta 15, M.G. Road Aurangabad-42	Kunal Mehta 15, M.G. Road Aurangabaad 42	None
131.	Kanwal Ture Howrah 18/C Kolkata-700328	Kanwal Ture Howrah 18/D Kolkata-700328	Kanwal Ture Howrah 18/C Kolkata-700328	Kanwal True Howrah 18/C Kolkata-700328	Kanwal Ture Howrah 18/C Kolkata-700328	None

132. Anushree Helen New M.G. Nagar M. 9726108521	Anushri Helen New M.G. Nagar M. 9726108521	Anushree Helen Old M.G. Nagar M. 9726108521	Anushree Helen New M.D. Nagar M. 9726108521	Anushree Helen New M.G. Nagar M. 9726108521	None
133. Yogesh Pinge Barracpore Wing-2B/14	Yogesh Pinge Barracpore Wing-3B/14	Yogesh Pinge Barracpore Wing-2B/14	Yogesh Pinge Barracpore Wing-2B/41	Yogesh F Pinge Barracpore Wing-2B/14	None
134. Akash Kumar Raghunathgarh Tel. 277541	Akash Kumar Raghunathgarh Tel. 277541	Akash Kumar Raghunathgarh Fax. 277541	Akash Kumar Raghunathgarh Tel. 277415	Akaash Kumar Raghunathgarh Tel. 277541	None
135. Mrs. Naik D. Eden Colony Varanasi 241	Mrs. Naik D. Aden Colony Varanasi 241	Mrs. Naik D. Eden Colony Baranasi 241	Mrs. Naik D. Eden Colony Varanasi 241	Mrs. Naik D. Eden Colony Varanasi 142	None

Directions (136 -140) : Below in each question five words are given. Which of them will come at the **third place** if arranged in alphabetical order ?

136. (1) Laureate (2) Laugh
(3) Launch (4) Laundry
(5) Laurel
137. (1) Host (2) Hostage
(3) Hospital (4) Hostess
(5) Hostel
138. (1) Derail (2) Depute
(3) Deranged (4) Deputy
(5) Derby
139. (1) Media (2) Meddle
(3) Medal (4) Median
(5) Mediaeval
140. (1) Complacent (2) Complaint
(3) Complain (4) Compile
(5) Complainant

Directions (141 - 145) : In each of these questions a group of letters is given which is to be coded as per the scheme given below. You have to find out which of the answers (1), (2), (3) or (4) has the correct coded form of the given letters. If none of the coded forms is correct, mark (5) i.e. 'None of these' as the answer.

Letters	L	M	K	P	S	Q	V	N	T	E	W	G	D	B
Codes	-	5	4	#	2	8	%	@	7	9	★	>	6	=

141. NVBTPM
(1) %@=7#5
(2) @%=7#5
(3) @=%7#5
(4) @%=#75
(5) None of these
142. PWQNKG
(1) #★@48> (2) #★84@>
(3) #8★@4> (4) #★4@8>
(5) None of these

143. PSVTGL

- (1) #72%>~ (2) #%27~>
(3) #2%7>~ (4) #7%2>~
(5) None of these

144. GSDLNG

- (1) >62~@8 (2) >26~@8
(3) >26~8@ (4) >62@~8
(5) None of these

145. KEMWBV

- (1) 495=★% (2) 459★=%
(3) 495★=% (4) 459★%=
(5) None of these

Directions (146 - 150) : The news item in each question below is to be classified into one of the following five areas :

- (1) Sports, (2) Health and Science, (3) Politics, (4) Economics, (5) Miscellaneous

The number of the area (1) or (2) or (3) or (4) or (5), as the case may be is your answer.

146. The government has increased the Cash Reserve Ratio (CRR) to reduce the inflation rate by the end of the year.

- (1) Sports
(2) Health and Science
(3) Politics
(4) Economics
(5) Miscellaneous

147. There was an uproar over the release of the film in the state.

- (1) Sports
(2) Health and Science
(3) Politics
(4) Economics
(5) Miscellaneous

148. The match was postponed due to bad weather conditions.

- (1) Sports
(2) Health and Science
(3) Politics
(4) Economics
(5) Miscellaneous

149. Researchers found growing evidence of air pollution causing heart attacks, strokes and even death.

- (1) Sports
(2) Health and Science
(3) Politics
(4) Economics
(5) Miscellaneous

150. A new study found that green leafy vegetables reduce the risk of Diabetes.

- (1) Sports
(2) Health and Science
(3) Politics
(4) Economics
(5) Miscellaneous

TEST-III ENGLISH LANGUAGE

Directions (151-165): Read the following passage carefully and answer the questions given below it. Certain words/phrases have been printed in **bold** to help you locate them while answering some of the questions.

Once, a rich merchant presented a beautiful cat to the Emperor of China. Eventually, the emperor became fond of the animal and took it with him wherever he went. Everywhere, people kept asking the emperor, what was the cat named and everyone was **surprised**, when told, that it had no name. As time **progressed**, the emperor realized that the cat should have a name thus he decided to find a suitable name for his pet. He called his ministers, the seven wisest men in his empire, and commanded them to find a suitable name within seven days. The ministers were warned that if they do not succeed in finding a name by the end of 7 days, they will be punished. Also, the minister whose suggestion will be accepted will receive hundred gold pieces.

The ministers did a lot of research on names that would suit the emperor's favourite pet. At the end of this period they were **summoned** to the palace again, and asked for their suggestions. The youngest of the group thought he had found the perfect name. "TIGER!" he announced proudly, "Your majesty, as we all know tigers are powerful animals, it will be the best name for your pet cat. "Good name," said the emperor, after a moment's **reflection**. "The tiger is not only a noble and powerful beast but it is also known as the cat's cousin," added the emperor.

"Noble, perhaps," said the second minister, "but it is not as powerful as the dragon. Can a tiger soar into the sky? No, but a dragon can! I think DRAGON would be a more suitable name for the cat". As the emperor was contemplating the name DRAGON, the third minister said, "Clouds can go higher than dragons. A cloud is more powerful than a dragon. Let's call it CLOUD." "Let's not be hasty," advised the fourth wise man. "Clouds may fly high but they are pushed around by winds. Winds are more powerful than clouds. WIND would be the most appropriate name for a great emperor's

pet." The emperor was still not satisfied with the suggestions "WIND?" said the emperor, doubtfully. "Isn't there anything better?" The fifth wise man took this opportunity to give his suggestion. "BRICK WALL!" he **exclaimed**. "Why should I name my cat BRICK WALL?" asked the emperor with astonishment as it was the most unusual name he had heard till now. "A brick wall can stop the wind, however powerful," explained the fifth minister. "A brick wall is more powerful than the wind!" Oh, I see," said the emperor. "Well, BRICK WALL is not a bad name. But isn't it a bit long?" "I have a shorter name," said the sixth minister "RAT". Everyone started laughing at the suggestion. "So you suggest that I must call my cat RAT?" The sixth minister replied, "yes, Your Majesty, RAT! A rat can eat through a brick wall, which makes it more powerful than the wall, more powerful than the wind, more powerful than all the suggestions given to you." "I get your point," interrupted the emperor, "but can you call a cat, RAT?"

"Indeed you can't!" piped up the seventh wise man who was the eldest among all seven. "A Cat is a cat. How can one call a cat RAT? Also if a rat is more powerful than the others the cat is even more so because it is mightier than the rat. The emperor was impressed with the seventh minister's suggestion and decided to accept it. So the royal pet remained nameless in a way because from then on it was simply called CAT. But the minister who suggested this name was rewarded as promised.

151. Why did people get surprised wherever the emperor went?
- (1) Because the emperor had a nameless cat
 - (2) Because the emperor took his cat wherever he went
 - (3) Because the emperor's cat was crazy
 - (4) Because the emperor got a cat as a present
 - (5) None of these
152. What made the emperor realize that he should give a name to his pet cat?
- (1) All cats had a name except his pet cat
 - (2) Everyone laughed at his cat for being nameless
 - (3) Everyone asked his cat's name wherever he took it

- (4) The cat requested that it should be named
 - (5) Both (1) and (2)
153. Why did the emperor not want to name his cat BRICK WALL?
- (1) He did not like brick walls
 - (2) Brick walls are rough and hard but cats are not
 - (3) BRICK WALL is a very long name
 - (4) He already had a pet called BRICK WALL
 - (5) He felt BRICK WALL was a very funny name
154. What command did the emperor give to his seven wise ministers?
- (A) To find a name for his pet cat.
 - (B) To find the name in a span of 7 days.
 - (C) To find his pet cat.
- (1) Only (A)
 - (2) Both (A) and (B)
 - (3) Only (B)
 - (4) Only (C)
 - (5) All (A), (B) and (C)
155. Why was the cat named CAT at last?
- (A) The seventh minister proved that a cat is greater than all the other names that were suggested
 - (B) The emperor was impressed with the seventh minister's suggestion.
 - (C) It was a unique name and the emperor had never heard anything like that.
- (1) All (A), (B) and (C)
 - (2) Only (A)
 - (3) Only (B)
 - (4) Only (C)
 - (5) Both (A) and (B)
156. What would be an appropriate name for the passage?
- (1) The emperor
 - (2) The cat
 - (3) The wise minister
 - (4) A story of names by an Emperor
 - (5) A cat named CAT
157. Which of the following statements is TRUE according to the passage?
- (A) Dragons can blow the clouds away.

- (B) Winds can blow the clouds away.
 (C) Brick walls can stop the winds.
 (1) Both (A) and (B)
 (2) Both (B) and (C)
 (3) Only (A)
 (4) Only (B)
 (5) Only (C)

158. According to the second minister, why was the name DRAGON better than the name TIGER ?

- (1) Because the second minister liked dragons more than tigers
 (2) Because dragons are more ferocious than tigers
 (3) Because a dragon's tail is always longer than the tiger's
 (4) Because dragons can soar high in the sky while tigers cannot
 (5) Because tigers cannot breath fire while dragons can

159. What reason did the first minister give for his suggestion ?

- (1) Tigers are powerful creatures
 (2) Tigers are the most dangerous of all creatures
 (3) Tigers resemble cats
 (4) Tiger sounds royal and majestic
 (5) Tiger sounds better than any other name

160. Why did everyone start laughing at the sixth minister's suggestion ?

- (1) He suggested that the cat be named CAT
 (2) Everyone found the suggested name funny
 (3) Both (1) and (2)
 (4) He suggested that the cat was better off without a name
 (5) He suggested that the cat be named EMPEROR

Directions (161- 163) : Choose the word/group of words which is **most similar** in the meaning to the word/group of words printed in **bold** as used in the passage.

161. Surprised

- (1) Presented
 (2) Unaware
 (3) Appalled
 (4) Astonished
 (5) Disgusted

162. Exclaimed

- (1) Announced
 (2) Cried

- (3) Said
 (4) Quoted
 (5) Pointed out

163. Reflection

- (1) Image (2) Sign
 (3) Hesitation (4) Introspection
 (5) Picture

Directions (164- 165) : Choose the word/group of words which is **most opposite** in meaning to the word/group of words printed in **bold** as used in the passage.

164. Progressed

- (1) Passed (2) Failed
 (3) Repeated (4) Stopped
 (5) Waited

165. Summoned

- (1) Dragged (2) Met
 (3) Rejected (4) Reached
 (5) Dismissed

Directions (166 - 175) : Read each sentence to find out whether there is any grammatical error or idiomatic error in it. The error, if any, will be in one part of the sentence. The number of that part is the answer. If there is no error the answer is (5). (Ignore errors of punctuation if any.)

166. The basketball match (1)/ was organized and (2)/ the sponsored by his (3)/ father's company (4)/ . No Error (5).

167. There were many (1)/ factors that contributed (2)/ to the success (3)/ of this experiments (4)/ . No Error (5).

168. Child labour is (1)/ considered to be (2)/ illegal in (3)/ many countries (4)/ . No Error (5).

169. She always remembers (1)/ to switch off all the (2)/ lights and fans before (3)/ leaving a rooms (4)/ . No Error (5).

170. In spite of the (1)/ heavy raining Raj (2)/ decided to go (3)/ for the meeting (4)/ . No Error (5).

171. Ragi may not taste (1)/ good but it has (2)/ very high (3)/ nutritive value (4)/ . No Error (5).

172. She wanted to reached (1)/ home as early (2)/ as possible because (3)/ it was getting dark (4)/ . No Error (5).

173. Rohan's happiness knew no (1)/ bounds when the results (2)/ were announce because (3)/ he had won the competition (4)/ . No Error (5).

174. The royal guards were instruction (1)/ to keep the palace (2)/ gates closed as the (3)/ villagers were agitated (4)/ . No Error (5).

175. They were hoping (1)/ to reach of time (2)/ for the lecture (3)/ but they were late (4)/ No Error (5).

Directions (176 - 180) : In each question below, four words printed in **bold** type are given. These are numbered (1), (2), (3) and (4). One of these words printed in **bold** may either be **wrongly spelt or inappropriate** in the context of the sentence. Find out the word that is inappropriate or wrongly spelt, if any. The number of that word is your answer. If all the words printed in **bold** are correctly spelt and appropriate in the context of the sentence then mark (5) i.e. 'All Correct' as your answer.

176. Information (1)/ about the **exam** (2)/ was **displaid** (3)/ on the **notice** (4)/ board. All Correct (5).

177. Richa **promised** (1)/ to **kleen** (2)/ her **room** (3)/ on **Sunday** (4)/ . All Correct (5).

178. The **robers** (1)/ tried to **get** (2)/ into the **house** (3)/ through the **balcony** (4)/ . All Correct (5).

179. The **strike** (1)/ **continued** for 3 days, **because** (2)/ of which the **company** (3)/ underwent a **huge** loss (4)/ All Correct (5).

180. **There** (1)/ were **many** (2)/ **seagulls** (3)/ on the **beach** (4)/ . All Correct (5).

Directions (181 - 185) : Rearrange the following six sentences (A), (B), (C), (D), (E) and (F) in proper sequence to form a meaningful paragraph then answer the questions given below them.

(A) When finally he regained consciousness, he saw that the sea was as calm as a pond.

(B) "I'm always peaceful but it is the wind that creates waves and turns me into a monster", the goddess continued.

(C) "Do not blame me, my son," said the goddess.

(D) A man who had survived a shipwreck struggled mightily against the waves and finally succeeded in reaching the shore, more dead than alive.

(E) The sea heard him shout angrily and took the form of a goddess to defend itself.

(F) "How deceitful you are!" he shouted at the sea. "You draw men into you showing your peaceful side but when they are in your power you put them in trouble."

181. Which of the following should be the **FOURTH** sentence in the rearrangement ?

- (1) C (2) B
(3) E (4) F
(5) A

182. Which of the following should be the **FIFTH** sentence in the rearrangement ?

- (1) A (2) D
(3) B (4) C
(5) E

183. Which of the following should be the **FIRST** sentence in the rearrangement ?

- (1) D (2) A
(3) C (4) B
(5) F

184. Which of the following should be the **LAST (SIXTH)** sentence in the rearrangement ?

- (1) A (2) B
(3) D (4) C
(5) F

185. Which of the following should be the **SECOND** sentence in the rearrangement ?

- (1) A (2) E
(3) D (4) B
(5) F

Directions (186 - 190) : Each sentence below has a blank(s), each blank indicating that something has been omitted. Choose the word(s) that best fit(s) the meaning of the sentence as a whole.

186. Shweta has _____ in Chennai all her life.

- (1) lives (2) living
(3) lived (4) seeing
(5) seen

187. Jimmy _____ avoids playing tennis on weekdays as it is very tiring.

- (1) rarely
(2) usually
(3) greatly
(4) highly
(5) poorly

188. Mr. Bose _____ working in the bank for the last fifteen years.

- (1) will be
(2) have been
(3) to be
(4) has been
(5) plans to

189. Praful _____ to be promoted as he is very hard working.

- (1) afraid
(2) hoping
(3) tries
(4) awaited
(5) deserves

190. She _____ sang well _____ played the sitar very well.

- (1) also, a
(2) no sooner, than
(3) not only, but also
(4) try to, and also
(5) never, even

Directions (191 - 200) : In the following passage there are blanks, each of which has been numbered. These numbers are printed below the passage and against each, five words are suggested, one of which fits the blank appropriately. Find out the appropriate word in each case.

This happened thousands of years ago. Life was hard as people had to do all the work by themselves. A large number of people were (191) they would travel from one place to another in search of food and shelter. While travelling one day, a man arrived at the (192) of a desert. He was walking on the sand, when suddenly, he came across a frightening creature - it had extremely long, thin legs, a giant hump and a long neck. It was this neck that he extended towards the man, who scared out of his (193), ran away from the spot. The following day, he met the creature again. It was standing near a lake, (194) water. This time, the man was fascinated at what he saw - the creature putting its long neck into the lake and drinking water continuously. Then suddenly, aware it was being watched, the giant creature looked up and stared straight into the eyes of the man standing across. But this time, an (195) of water separated the two, and the man did not run away. He stood and watched the animal, which made no effort to come closer. In the following weeks, the man saw more such creatures, again and again. It seemed they were all over the desert, aimlessly walking about for miles on (196). The

man began to observe the creatures very closely. He saw that they were vegetarian. Moreover, despite their huge size, they were remarkably meek and (197). And the stamina the creatures had was (198). They could walk the entire length of the desert without being exhausted. Observing them the man thought, "What if I (199) this creature and make it ferry all my stuff? I could then make the desert my home." So, one day, while one of the creatures was dozing, the man went up to it and put a bridle in its mouth. Then he rode around on it, after placing an enormous amount of load on its back. With that, the taming of the camel was complete (for that was who the creature was). And ever since that day, the camel has faithfully (200) up to its title of 'Ship of the Desert'.

191. (1) masons
(2) cobblers
(3) farmers
(4) nomads
(5) potters

192. (1) edge (2) base
(3) banks (4) shore
(5) line

193. (1) humour (2) mind
(3) wits (4) life
(5) face

194. (1) flowing (2) drinking
(3) eating (4) watching
(5) listening

195. (1) expanse (2) stretch
(3) wedge (4) pond
(5) element

196. (1) kilometre (2) metres
(3) start (4) end
(5) miles

197. (1) scary (2) gentle
(3) ferocious (4) foolish
(5) aimless

198. (1) unarguable
(2) unbelievable
(3) unforgivable
(4) unbearable
(5) unavailable

199. (1) tame
(2) support
(3) kill
(4) eat
(5) call

200. (1) been (2) ran
(3) seen (4) lived
(5) stood

15. (4) Some rains are clouds.

All clouds are storms.

$I + A \Rightarrow$ I-type of Conclusion
"Some rains are storms".

16. (3) $473 \Rightarrow 453$; $169 \Rightarrow 149$;
 $825 \Rightarrow 805$; $692 \Rightarrow 672$;
 $538 \Rightarrow 518$

$$\frac{453}{3} = 151; \quad \frac{149}{3} = 49.66;$$

$$\frac{805}{3} = 268.33; \quad \frac{672}{3} = 224;$$

$$\frac{518}{3} = 172.66$$

17. (1) $473 \Rightarrow 743$; $169 \Rightarrow 961$;
 $825 \Rightarrow 852$; $692 \Rightarrow 962$;
 $538 \Rightarrow 853$

Lowest number $\Rightarrow 743 \Rightarrow 473$

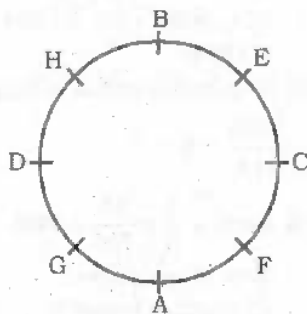
18. (4) $169 < 473 < 538 < 692 < 825$
Required product $\Rightarrow 7 \times 3 = 21$

19. (3) $473 \Rightarrow 374$; $169 \Rightarrow 961$;
 $825 \Rightarrow 528$; $692 \Rightarrow 296$;
 $538 \Rightarrow 835$
 $374 \Rightarrow 4 = (2)^2$;
 $961 \Rightarrow 1 = (1)^2$

20. (5) Lowest number $\Rightarrow 169$
Highest number $\Rightarrow 825$

Now, $\frac{6}{2} = 3$

(21 - 25) : Sitting arrangement



21. (2) Except in BC, in all others the first person is sitting second to the left of the second person. B is second to the right of C.
22. (4) E sits to the immediate left of B.
23. (1) D is third to the right of E.
24. (5) In none, the second person is sitting to the immediate right of the first person.
25. (1) A sits between G and F.
26. (3) D U B B C
D C B

27. (1) 5th to the left of the 16th from the left end means 11th from the left end, i.e., E.

C U B A E D E D A B **E** B A ...
11th from the left

28. (2) Required alphabets \Rightarrow U, D, E
Meaningful Word \Rightarrow DUE

29. (4) According to question, the new sequence would be :

C U B E D E D B E B **U** C D B C ...
11th from the left

30. (1)

Vowel	Vowel	Consonant
-------	-------	-----------

There is only one such combination :

AUC

(31 - 35) :



31. (2) P and Q sit at the extreme corners of the line.
32. (3) Two persons (T, L) sit between R and W.
33. (2) L is third to the right of S.
34. (4) Except in LR, in all others the first person is second to the left of the second person. In LR, the first person is second to the right of the second person.



36. (2) W U T A B E
↓ ↓ ↓ ↓ ↓ ↓
★ # 9 5 2 @
Condition (ii) is applicable.

37. (4) M A C B E U
↓ ↓ ↓ ↓ ↓ ↓
\$ # 3 2 @ #
Condition (iii) is applicable.

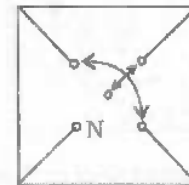
38. (5) H E I T Q K
↓ ↓ ↓ ↓ ↓ ↓
4 @ 7 5 4 4
Condition (i) is applicable.

39. (3) Q E P M U A
↓ ↓ ↓ ↓ ↓ ↓
4 9 8 \$ # 9
Condition (iii) is applicable.

40. (3) I R E P A H
↓ ↓ ↓ ↓ ↓ ↓
7 β @ 8 9 6

41. (5) In the subsequent figures the main design rotates through respectively 45° clockwise and 180° alternately while the others two designs move one and a half steps in anticlockwise direction after every two figures.
42. (5) In the subsequent figures respectively one circle and a shaded square are added alternately in a set order.
43. (4) In the subsequent figures the central design rotates respectively through 45° clockwise, 45° clockwise, 45° anticlockwise and so on while the other four designs move respectively one step and two steps in clockwise direction alternately.

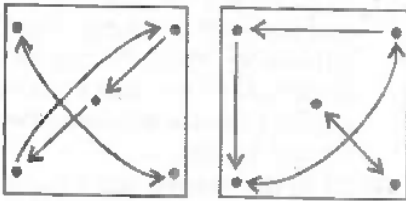
44. (3) From Problem Figure (1) to (2) the two designs from the left interchange positions and so as the two right designs interchange positions while the middle design is replaced with a new design. Similar changes occur from Problem Figure (3) to (4) and from Problem Figure (5) to Answer Figure.
45. (3) The following changes occur from Problem Figure (1) to (2) :



Similar changes would occur from Problem Figure (5) to Answer Figure.

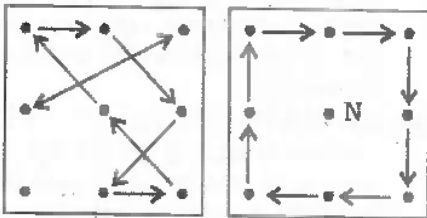
46. (2) In the subsequent figures respectively two and one outer curve(s) is/are inverted alternately while two, one, three, one, two, one inner curve(s) is/are inverted respectively.
47. (1) From Problem Figure (1) to (2) the design at upper left corner moves one step in clockwise direction while the other two designs move two steps in clockwise direction. Similar changes occur from Problem Figure (3) to (4) and from Problem Figure (5) to Answer Figure.
48. (2) The following changes occur in the subsequent figures :

- (1) to (2) (2) to (3)
 (3) to (4) (4) to (5)
 (5) to (6)

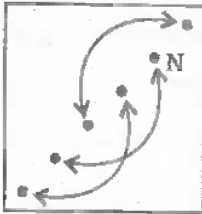


49. (4) The following changes occur in the subsequent figures :

- (1) to (2) (2) to (3)
 (3) to (4) (4) to (5)
 (5) to (6)



50. (1) The following changes occur from Problem Figure (1) to (2) after the plane of designs rotates through 45° anticlockwise.



Similar changes occur from Problem Figure (3) to (4) and from Problem Figure (5) to Answer Figure.

51. (4) $26 \times 9 + 164 + 65 = 132 + ?$
 $\Rightarrow 234 + 164 + 65 = 132 + ?$
 $\Rightarrow 463 = 132 + ?$
 $\Rightarrow ? = 463 - 132 = 331$
52. (1) $? = \frac{640 \times 15}{100} - \frac{750 \times 16}{100}$
 $= 96 - 120 = -24$
53. (5) $(?)^2 = \frac{78 \times 5}{2} - 26$
 $= 195 - 26 = 169$
 $\therefore ? = \sqrt{169} = \pm 13$
54. (1) $? \times \frac{4}{3} \times \frac{5}{2} = 340$
 $\Rightarrow ? = \frac{340 \times 3 \times 2}{4 \times 5} = 102$

55. (2) $? = 1 + \frac{1}{6} - 1 - \frac{1}{9} + 1 + \frac{1}{54}$
 $= 1 + \frac{1}{6} - \frac{1}{9} + \frac{1}{54} = 1 + \frac{9-6+1}{54}$
 $= 1 + \frac{4}{54} = 1 + \frac{2}{27} = 1\frac{2}{27}$

56. (3) $? = \frac{96}{16} \times \frac{64}{21} \times \frac{42}{60} = \frac{64}{5} = 12\frac{4}{5}$

57. (3) $\frac{? \times 48}{100} = 359 - 95 = 264$
 $\Rightarrow ? = \frac{264 \times 100}{48} = 550$

58. (2) $69.39 - 58.46 + 79.98 = ? + 76.92$

$\Rightarrow 90.91 = ? + 76.92$

$\Rightarrow ? = 90.91 - 76.92 = 13.99$

59. (4) $(?)^3 = \frac{40.5 \times 7 \times 4}{6} - 64$
 $= 189 - 64 = 125$

$\therefore ? = \sqrt[3]{125} = \sqrt[3]{5 \times 5 \times 5} = 5$

60. (5) $? = \frac{0.5 \times 5.6 \times 15}{0.5} = 84$

61. (4) $7766 = ? + 4444$

$\Rightarrow ? = 7766 - 4444 = 3322$

62. (4) $\frac{56 \times 15}{3} - 83 = ? - 139$

$\Rightarrow 280 - 83 + 139 = ?$

$\Rightarrow ? = 336$

63. (3) $625 = ? + 64$

$\Rightarrow ? = 625 - 64 = 561$

64. (2) $6^4 + (6^2)^3 \times 6^3 = 6^{7-5}$

$\Rightarrow 6^{4-6+3} = 6^{2-5}$

$\Rightarrow 6^1 = 6^{2-5}$

$\Rightarrow ? - 5 = 1 \Rightarrow ? = 6$

65. (4) $-70 \div 7 = ? \div (-4)$

$\Rightarrow \frac{-70}{7} = \frac{?}{-4}$

$\Rightarrow ? = 10 \times 4 = 40$

66. (1) $? = 31.74 - 22.66 + 15.19$
 $= 24.27$

67. (5) $85 - 48 - 16 = \frac{?}{7}$

$\Rightarrow 21 = \frac{?}{7}$

$\Rightarrow ? = 21 \times 7 = 147$

68. (2) $\frac{600 \times ?}{100} = 352 - 100 = 252$

$\Rightarrow ? = \frac{252 \times 100}{600} = 42$

69. (5) $? = \frac{750 \times 56}{100} \times \frac{5}{12} = 175$

70. (1) $? = \frac{5}{12} + \frac{5}{36} + \frac{5}{24}$

$= \frac{30+10+15}{72} = \frac{55}{72}$

71. (3) $287.68 = ? - 62.86$

$\Rightarrow ? = 287.68 + 62.86 = 350.54$

72. (2) $? = 855 \times \frac{6}{15} \times \frac{3}{19} = 54$

73. (3) $? = \sqrt{\frac{12 \times 184}{23} + 26} - 73$

$= \sqrt{96 + 26 - 73} = \sqrt{49} = 7$

74. (2) $? = (2 \times 3)^4 \div (9 \times 4) \div 4$

$= (6)^4 \div 36 \div 4$

$= \frac{(6)^4}{(6)^2 \times 4} = \frac{36}{4} = 9$

75. (2) $169 - 64 - 26 + 2 = (?)^2$

$\Rightarrow 81 = ?^2$

$\therefore ? = 9$

76. (5) $x + x + 2 + x + 4 + x + 6 + x + 8 = 230$

$\Rightarrow 5x + 20 = 230$

$\Rightarrow 5x = 230 - 20 = 210$

$\therefore x = \frac{210}{5} = 42$

$\therefore x + 8 = 42 + 8 = 50$

$\therefore 50 + (42)^2 = 50 + 1764$

$= 1814$

77. (4) Required number of bags

$= \frac{1026}{114} = 9$

78. (3) $1200 \times \frac{2}{5} \times \frac{55}{100} = 264$

79. (1) Area of rectangle

$= \text{Length} \times \text{breadth}$

$= 25 \times 15 = 375 \text{ sq. cm.}$

$\therefore \text{Area of the square} = \frac{3}{5} \times 375$

$= 225 \text{ sq. cm.}$

$\therefore \text{Side of a square}$

$= \sqrt{225} = 15 \text{ cm.}$

$\therefore \text{Perimeter of square} = 4 \times \text{Side}$

$= 4 \times 15 = 60 \text{ cm.}$

80. (4) First selling price

$= \frac{100 + \text{profit}\%}{100} \times \text{Cost price}$

$$= \text{Rs. } \left(\frac{125}{100} \times 8200 \right)$$

$$= \text{Rs. } 10250$$

Second sitting price,

$$= \frac{10250 \times 80}{100} = \text{Rs. } 8200.$$

Tricky Approach

Percentage profit/loss

$$= \left(25 - 20 - \frac{25 \times 20}{100} \right) \% = 0\%$$

81. (2) Puja's Annual income

$$= \text{Rs. } \left(12 \times \frac{2}{3} \times 36000 \right)$$

$$= \text{Rs. } 288000$$

$$= \text{Rs. } 2.88 \text{ lac.}$$

82. (5) Diameter of circle = 16 - 2

$$= 14 \text{ cm.}$$

∴ Radius = 7 cm

∴ Area of circle = πr^2

$$= \frac{22}{7} \times 7 \times 7 = 154 \text{ sq. cm}$$

83. (1) Simple interest = $\frac{2}{10} \times 25000$

$$= \text{Rs. } 5000$$

$$\therefore \text{Rate} = \frac{\text{S.I.} \times 100}{\text{Principal} \times \text{Time}}$$

$$= \frac{5000 \times 100}{25000 \times 4}$$

$$= 5\% \text{ per annum}$$

84. (3) $M_1 D_1 = M_2 D_2$

$$\Rightarrow 6 \times 32 = 16 \times D_2$$

$$\Rightarrow D_2 = \frac{6 \times 32}{16} = 12 \text{ hours}$$

85. (4) Required Average weight

$$= \left(\frac{54 + 64 + 75 + 67 + 45 + 91}{6} \right) \text{ kg}$$

$$= \left(\frac{396}{6} \right) \text{ kg.} = 66 \text{ kg.}$$

86. (2) Let Indra's present age be 3x years and that of Lizzy be 8x years.

After 8 years,

$$3x + 8 = 20$$

$$\Rightarrow 3x = 20 - 8 = 12$$

$$\Rightarrow x = 4$$

∴ Lizzy's age 5 years ago

$$= 8x - 5$$

$$= 8 \times 4 - 5 = 27 \text{ years}$$

87. (2) Average speed of tractor

$$= \frac{\text{Distance covered}}{\text{Time taken}}$$

$$= \frac{384}{16} = 24 \text{ kmph}$$

∴ Average speed of train

$$= \frac{9}{2} \times 24 = 108 \text{ kmph}$$

∴ Distance covered in 12 hours

$$= \text{speed} \times \text{Time}$$

$$= 108 \times 12 = 1296 \text{ km.}$$

88. (3) $9^3 - 23^2 = 729 - 529$

$$= 200$$

89. (2) $(?)^{\frac{2}{3} + \frac{1}{3}} = 5 \times 42$

$$\Rightarrow ? = 210$$

90. (5) $\frac{3}{7} = 0.43$; $\frac{4}{9} = 0.44$

$$\frac{5}{11} = 0.45$$

$$\frac{7}{12} = 0.58$$

$$\frac{8}{15} = 0.53$$

∴ Second largest fraction = $\frac{8}{15}$

91. (1) Required distance covered

$$= 2(6 \times 415 + 500) \text{ metre}$$

$$= 2(2490 + 500) \text{ metre}$$

$$= 5980 \text{ metre} = 5.98 \text{ km}$$

92. (1) Total marks obtained by Amit

$$= 44 + 55 + 77 + 79 + 76$$

$$= 331$$

∴ Required percentage

$$= \frac{331}{500} \times 100 = 66.2$$

93. (5) The Pattern of the number series is :

$$7 \times 2 - 3 = 11$$

$$11 \times 2 - 3 = 19$$

$$19 \times 2 - 3 = 35$$

$$35 \times 2 - 3 = 67$$

$$67 \times 2 - 3 = 134 - 3 = \boxed{131}$$

94. (3) The Pattern of the number series is :

$$5 + 1^2 = 6$$

$$6 + 2^2 = 10$$

$$10 + 3^2 = 19$$

$$19 + 4^2 = 35$$

$$35 + 5^2 = 35 + 25 = \boxed{60}$$

95. (1) The Pattern of the number series is :

$$1 + 2 = 3$$

$$3 + (2 + 3) = 8$$

$$8 + (2 + 3 + 5) = 18$$

$$18 + (2 + 3 + 5 + 7) = 35$$

$$35 + (2 + 3 + 5 + 7 + 9) = 61$$

96. (1) LHS = 21 + 12 = 33

$$\text{RHS} = 15 + 15 = 30$$

$$\text{LHS} > \text{RHS}$$

97. (2) LHS = $\pm(18 - 7) = \pm 11$

$$\text{RHS} = \sqrt{121} = \pm 11$$

98. (1) LHS = $(34 - 4) \times 5 = 150$

$$\text{RHS} = (16 \times 8 + 16)$$

$$= 16(8 + 1) = 144$$

$$\text{LHS} > \text{RHS}$$

99. (3) LHS = 133 - 16 = 117

$$\text{RHS} = 49 \times 3 = 147$$

$$\text{LHS} < \text{RHS}$$

100. (3) LHS = 7 + 6 = 13

$$\text{RHS} = 100 \div 4 = 25$$

$$\text{LHS} < \text{RHS}$$

136. (4) Alphabetical order of words :

2. Laugh

↓

3. Launch

↓

4. Laundry

↓

1. Laureate

↓

5. Laurel

137. (2) Alphabetical order of words :

3. Hospital

↓

1. Host

↓

2. Hostage

↓

5. Hostel

↓

4. Hostess

138. (1) Alphabetical order of words :
2. Depute
 - ↓
 4. Deputy
 - ↓
 1. Derail
 - ↓
 3. Deranged
 - ↓
 5. Derby
139. (1) Alphabetical order of words :
3. Medal
 - ↓
 2. Meddle
 - ↓
 1. Media
 - ↓
 5. Mediaeval
 - ↓
 4. Median
140. (3) Alphabetical order of words :
4. Compile
 - ↓
 1. Complacent
 - ↓
 3. Complain
 - ↓
 5. Complainant
 - ↓
 2. Complaint
141. (2) N V B T P M
- ↓ ↓ ↓ ↓ ↓ ↓
- @ % = 7 # 5
142. (5) P W Q N K G
- ↓ ↓ ↓ ↓ ↓ ↓
- # ★ 8 @ 4 >
143. (3) P S V T G L
- ↓ ↓ ↓ ↓ ↓ ↓
- # 2 % 7 > ~
144. (2) G S D L N Q
- ↓ ↓ ↓ ↓ ↓ ↓
- > 2 6 ~ @ 8
145. (3) K E M W B V
- ↓ ↓ ↓ ↓ ↓ ↓
- 4 9 5 ★ = %
146. (4) The news item is related to Economics.
147. (5) The news item can be classified into Miscellaneous.
148. (1) The news item is related to Sports.
149. (2) The news item is related to Health and Science.
150. (2) The news item is related to Health and Science.

151. (1) Because the emperor had a nameless cat
152. (3) Everyone asked his cat's name wherever he took it
153. (3) BRICK WALL is a very long name
154. (2) Both (A) and (B)
155. (5) Both (A) and (B)
156. (5) A cat named CAT
157. (2) Both (B) and (C)
158. (4) Because dragons can soar high in the sky while tigers cannot
159. (1) Tigers are powerful creatures
160. (2) Everyone found the suggested name funny
161. (4) The meaning of the word **Surprised (Adjective)** as used in the passage is : feeling or showing surprise; amazed; astonished.
- Look at the sentence :**
- I was surprised at how quickly he agreed.
162. (2) The meaning of the word **Exclaim (Verb)** as used in the passage is : to say something suddenly and loudly; especially because of strong emotion or pain; cry.
- Hence, the words **exclaimed** and **cried** are synonymous.
163. (4) The meaning of the word **Reflection (Noun)** as used in the passage is : careful thought about something.
- The word **Introspection (Noun)** means : the careful examination of your own thoughts.
164. (4) The meaning of the word **Progress (Verb)** as used in the passage is : to improve or develop over a period of time; advance: to move forward.
- Hence, the words **progressed** and **stopped** are antonymous.
165. (5) The meaning of the word **Summon (Verb)** as used in the passage is : order somebody to appear; to order somebody to come to you.
- The word **Drag (Verb)** means to persuade somebody to come or go somewhere they don't really want to come or go to.
- The word **Dismiss (Verb)** means : to send somebody away or allow them to leave.

- Hence, the words **summoned** and **dismissed** are antonymous.
166. (3) It is improper to use an article before a verb.
- Hence sponsored by his should be used here.
167. (4) Here of this experiment/of these experiments should be used.
168. (2) Here, it is improper to use 'to be' (Probability). Hence considered should be used.
169. (4) Here leaving rooms/ leaving a room should be used.
170. (2) Here, Noun i.e. rain should be used.
- Hence, heavy rain Raj should be used.
171. (3) Here, Article 'a' i.e. a very high should be used.
172. (1) The form of an Infinitive is: to + V₁ (Plural)
- Hence, She wanted to reach should be used.
173. (3) Structure of Past Simple (Passive Voice) is :
- Subject + was/were + V₃ (Past Participle)
- Hence, were announced because should be used.
174. (1) Here, The royal guards were instructed should be used.
175. (2) Idiom on time/in time means : not late.
- Hence, to reach on time should be used.
176. (3) The correct spelling is : displayed.
177. (2) The correct spelling is : clean.
178. (1) The correct spelling is : robbers.
179. (5) All Correct
180. (5) All Correct
181. (3) E 182. (4) C
183. (1) D 184. (2) B
185. (1) A 186. (3) lived
187. (2) usually
188. (4) has been
189. (5) deserves
190. (3) not only, but also
191. (4) nomads 192. (1) edge
193. (3) wits 194. (2) drinking
195. (1) expanse 196. (5) miles
197. (2) gentle
198. (2) unbelievable
199. (1) tame 200. (5) stood

