

DO NOT OPEN THE SEAL OF THE BOOKLET UNTIL YOU ARE TOLD TO DO SO

Test Form No.

टेस्ट फॉर्म संख्या

333 NJ 4

CY-2013

GK - 1038124

Time Allowed : 2 Hours (For V.H. Candidates : 2 hrs. 40 min.)

Maximum Marks : 200

निर्धारित समय : 2 घण्टे (दृष्टिबाधित उम्मीदवारों के लिए : 2 घण्टे 40 मिनट)

अधिकतम अंक : 200

Read the following instructions carefully before you begin to answer the questions. This Booklet contains questions in English as well as in Hindi.

प्रश्नों के उत्तर देने से पहले निम्नलिखित अनुदेशों को ध्यान से पढ़ लें। इस पुस्तिका में प्रश्न अंग्रेजी तथा हिन्दी दोनों में दिये गये हैं।

INSTRUCTIONS TO CANDIDATES

- This Booklet contains 200 questions in all comprising the following four parts :
Part - A : General Intelligence & Reasoning (50 Questions)
Part - B : General Awareness (50 Questions)
Part - C : Quantitative Aptitude (50 Questions)
Part - D : English Comprehension (50 Questions)
- In questions set bilingually in English and Hindi, in case of discrepancy, the English version will prevail.
- All questions are compulsory and carry equal marks.
- The paper carries negative marking. 0.25 marks will be deducted for each wrong answer.
- Before you start to answer the questions you must check up this Booklet and ensure that it contains all the pages (1-32) and see that no page is missing or repeated. If you find any defect in this Booklet, you must get it replaced immediately.
- You will be supplied the Answer-Sheet separately by the Invigilator. You must complete and code the details of Name, Roll Number, Ticket Number and Test Form Number on Side-I of the Answer-Sheet carefully. You must also put your signature and Left-Hand thumb impression on the Answer-Sheet at the prescribed place before you actually start answering the questions. These instructions must be fully complied with, failing which, your Answer-Sheet will not be evaluated and you will be awarded 'ZERO' mark. (V.H. candidates will have to ensure that these details are filled in by the scribe. However, all V.H. candidates must put their left-hand thumb impression at the space provided in the Answer-Sheet. Those V.H. candidates who can sign should also put their signatures in addition to thumb impression.)
- Answers must be shown by completely blackening the corresponding ovals on Side-II of the Answer-Sheet against the relevant question number by Black/Blue Ball-Point Pen Only. Answers which are not shown by Black/Blue Ball-Point Pen will not be awarded any mark.
- A machine will read the coded information in the OMR Answer-Sheet. In case the information is incomplete or different from the information given in the application form, such candidate will be awarded 'ZERO' mark.
- The Answer-Sheet must be handed over to the Invigilator before you leave the Examination Hall.
- Failure to comply with any of the above Instructions will render a candidate liable to such action/penalty as may be deemed fit.
- The manner in which the different questions are to be answered has been explained at the back of this Booklet (Page No. 32), which you should read carefully before actually answering the questions.
- Answer the questions as quickly and as carefully as you can. Some questions may be difficult and others easy. Do not spend too much time on any question.
- In lieu of Question Nos. 39 to 56 and 144 to 150, relating to figural portions, alternate questions have been provided to be attempted by V.H. Candidates only.
- No rough work is to be done on the Answer-Sheet. Space for rough work has been provided below the questions.
- "Mobile phones and wireless communication devices are completely banned in the examination halls/rooms. Candidates are advised not to keep mobile phones/any other wireless communication devices with them even switching it off, in their own interest. Failing to comply with this provision will be considered as using unfair means in the examination and action will be taken against them including cancellation of their candidature."

उम्मीदवारों के लिए अनुदेश

- इस पुस्तिका में कुल 200 प्रश्न हैं, जिनमें निम्नलिखित चार भाग शामिल हैं :
भाग-क : सामान्य बुद्धिमत्ता एवं तर्कशास्त्र (50 प्रश्न)
भाग-ख : सामान्य जानकारी (50 प्रश्न)
भाग-ग : परिमाणात्मक अभिरूचि (50 प्रश्न)
भाग-घ : अंग्रेजी परिचय (50 प्रश्न)
- अंग्रेजी और हिन्दी भाषा में तैयार किए गए द्विभाषी प्रश्नों में कोई विचलन होने की स्थिति में अंग्रेजी विवरण मान्य होगा।
- सभी प्रश्न अनिवार्य हैं तथा सबके बराबर अंक हैं।
- प्रश्न पत्र में नकारात्मक अंकन होगा। हर गलत उत्तर के लिए 0.25 अंक काटा जाएगा।
- प्रश्नों के उत्तर देने से पहले आप इस पुस्तिका की जाँच करके देख लें कि इसमें पृष्ठ (1-32) हैं तथा कोई पृष्ठ कम या दुबारा तो नहीं आ गया है। यदि आप इस पुस्तिका में कोई त्रुटि पाएँ, तो तत्काल इसके बदले दूसरी पुस्तिका ले लें।
- निरीक्षक द्वारा आपको उत्तर-पत्रिका अलग से दी जाएगी। उत्तर-पत्रिका के Side-I में निम्नान्वली के अनुसार ध्यानपूर्वक अपना नाम, रोल नम्बर, टिकट नम्बर और टेस्ट फॉर्म संख्या अवश्य लिखें। प्रश्नों के उत्तर वास्तव में शुरू करने से पहले उत्तर-पत्रिका पर निर्धारित स्थान में आप अपने हस्ताक्षर एवं बाएँ हाथ के अंगूठे का निशान भी अवश्य लगाएँ। उपर्युक्त अनुदेशों का पूरी तरह अनुपालन किया जाए अन्यथा आपको उत्तर-पत्रिका की जाँच नहीं जाएगी और 'शून्य' अंक दिया जाएगा। (दृष्टिबाधित उम्मीदवार सुनिश्चित करें कि यह विवरण लिपिक द्वारा भरा जाए। परन्तु सभी दृष्टिबाधित उम्मीदवार उत्तर-पत्रिका में निर्धारित स्थान पर अपने बाएँ हाथ के अंगूठे का निशान अवश्य लगाएँ। जो दृष्टिबाधित उम्मीदवार हस्ताक्षर कर सकते हैं, वे अंगूठे के निशान के अलावा अपने हस्ताक्षर भी कर दें।)
- उत्तर-पत्रिका में सभी उत्तर Side-II में प्रश्न संख्या के सामने दिये गये सम्बन्धित अण्डाकार खानों को केवल काले/नीले बॉल-पॉइंट पेन से पूरी तरह काला करके दिखाएँ। जो अण्डाकार खाने काले/नीले बॉल-पॉइंट पेन से नहीं भरे जाएँगे, उनके लिए कोई अंक नहीं दिया जाएगा।
- ओ.एम.आर. उत्तर-पत्रिका में भरो गई कूट संख्या को एक पक्षीय न करें। यदि सूचना अपूर्ण है अथवा आवेदन प्रपत्र में दी गई सूचना में भिन्न है, तो ऐसे अभ्यर्थी को 'शून्य' अंक दिया जाएगा।
- परीक्षा-भवन छोड़ने से पहले परीक्षार्थी को उत्तर-पत्रिका निरीक्षक के हवाले कर देनी चाहिए।
- ऊपर के अनुदेशों में से किसी एक का भी पालन न करने पर उम्मीदवार पर विवेकानुसार कार्यवाही की जा सकती है या दण्ड दिया जा सकता है।
- विभिन्न प्रश्नों के उत्तर देने की विधि इस पुस्तिका के पीछे (पृष्ठ संख्या 32) में छपे हुए निर्देशों में दे दी गई है। इसे आप प्रश्नों के उत्तर देने से पहले ध्यानपूर्वक पढ़ लें।
- प्रश्नों के उत्तर जितनी जल्दी हो सके तथा ध्यानपूर्वक दें। कुछ प्रश्न आसान तथा कुछ कठिन हैं। किसी एक प्रश्न पर बहुत अधिक समय न लगाएँ।
- आकृति से सम्बन्धित प्रश्न संख्या 39 से 50 एवं 144 से 150 के बदले में केवल दृष्टिबाधित उम्मीदवारों द्वारा हल किए जाने के लिए वैकल्पिक प्रश्न दिए गए हैं।
- कोई रफ कार्य उत्तर-पत्रिका पर नहीं करना है। रफ कार्य के लिए स्थान प्रश्नों के नीचे दिया गया है।
- "परीक्षा हॉलों/कमरों में मोबाइल फोन तथा बेतार संचार साधन पूरी तरह निषिद्ध हैं। प्रत्याशियों को उनके अपने हित में सलाह दी जाती है कि मोबाइल फोन/किसी अन्य बेतार संचार साधन को स्विच ऑफ करके भी अपने पास न रखें। इस प्रावधान का अनुपालन न करने की परीक्षा में अनुचित उपायों का प्रयोग माना जाएगा और उनके विरुद्ध कार्रवाई की जाएगी, उनकी अभ्यर्थिता रद्द कर देने सहित।"

इस पुस्तिका की सील तब तक न खोलें जब तक कहा न जाए।

PART - A.

GENERAL INTELLIGENCE & REASONING

Directions : In question nos. 1 to 6, select the related words/ letters/ numbers from the given alternatives.

1. 82 : 06 :: 76 : ?
(A) 12 (B) 24 (C) 15 (D) 01

2. Reference material : Dictionary :: Periodical : ?
(A) Biography (B) Newspaper
(C) Book (D) Atlas

3. KMNP : ACDF :: PRSU : ?
(A) VXYZ (B) LNPR
(C) STVW (D) TVWY

4. BEDK : GJLI :: LON : ?
(A) QST (B) KNH (C) QTS (D) PTS

5. Tea : Cup :: Soup : ?
(A) Bowl (B) Mug
(C) Glass (D) Spoon

6. CDGF : HILK :: NORQ : ?
(A) STWX (B) IGNL
(C) UVWY (D) PQTS

Directions : In question nos. 7 to 12, find the odd numbers/ letters/ figure/ number pair from the given alternatives.

7. (A) ABCD (B) EFGH
(C) WXYZ (D) PRSQ

8. (A) Divergent Production
(B) Cognition
(C) Forgetting
(D) Convergent Production

9. (A) Fantasy (B) Disgust
(C) Distress (D) Sorrow

10. (A) 568 (B) 345 (C) 679 (D) 124

11. (A) 13 - 12 (B) 7 - 18
(C) 9 - 26 (D) 11 - 36

12. (A) W (B) H (C) I (D) N

13. Which one of the given responses would be a meaningful order of the following?

(1) substance (2) atom
(3) molecule (4) proton
(A) (2), (3), (4), (1) (B) (4), (3), (2), (1)
(C) (4), (2), (3), (1) (D) (1), (2), (3), (4)

14. Arrange the following words as per order in the dictionary.

(1) Acarpous (2) Across
(3) Accede (4) Academic
(5) Accentuate
(A) (3), (4), (1), (2), (5) (B) (1), (2), (4), (3), (5)
(C) (4), (1), (3), (5), (2) (D) (2), (3), (1), (4), (5)

Direction : In question nos. 15 to 18, a series is given, with one term missing. Choose the correct alternative from the given ones that will complete the series.

15. MENIPO ? ? ?
(A) QU (B) QO (C) QI (D) PA

16. 2, 20, 56, 110, ?
(A) 182 (B) 115 (C) 132 (D) 144

17. 121, 222, 424, ?
(A) 626 (B) 524 (C) 646 (D) 828

18. LMN, MNOP, NOPQR, ?
(A) QRSTUV (B) PQRSTU
(C) OPQRST (D) RSTUVW

19. If PRQST is coded as 13245 and OTUWV is coded as 05687, then how is TXOQP coded?

(A) 21096 (B) 95210
(C) 59021 (D) 69021

SPACE FOR ROUGH WORK

20. In a code language 'TEMPORARY' is written as 'EPRSAYOYM' and 'EXCUSE' as 'PGNVXP'. How is 'ASSURE' written in that code?

- (A) OPPVXP (B) OXXYXP
(C) OPPVYP (D) OXXVYP

21. Insert the arithmetic operations in the following numerical figures:

$$13 * 3 * 4 * 3 = 4$$

- (A) + × ÷ (B) + ÷ ×
(C) ÷ × + (D) - × +

22. How many such pairs of letters are there in the word RECOVERED, which have as many letters between them in the word as in the English alphabet?

- (A) Six (B) Five
(C) Three (D) Four

23. If + means ÷, - means ×, × means + and ÷ means -, then which of the alternative is correct?

- (A) $38 \div 10 - 5 + 7 \times 8 = 25$
(B) $10 - 12 + 2 \div 30 \times 1 = 10$
(C) $5 \times 8 - 5 + 5 \div 1 = 12$
(D) $55 - 2 + 10 \div 1 \times 5 = 16$

24. From the given alternatives select the word which can be formed using the letters given in the word. RATIONALISATION

- (A) TRANSITION (B) INTERNAL
(C) SENSATION (D) ALTERATION

25. If BEAT = 25-22-26-7 and RUST = 9-6-8-7, then how will you code 'BURST'?

- (A) 25-9-8-7-6 (B) 25-6-9-8-7
(C) 25-22-9-8-7 (D) 25-9-6-8-7

26. From the given alternative words, select the word which cannot be formed using the letters of the given word: PRESUMPTION

- (A) Pump (B) Ruin
(C) Tier (D) Pompous

27. The age of Ram is double as that of Shyam and half as that of Suresh. If the sum of their ages is 70, what is the age of Ram?

- (A) 40 (B) 10 (C) 20 (D) 30

28. $\frac{5}{9} \times \frac{27}{25} \div \frac{3}{5} = ?$

- (A) 4 (B) 1 (C) 2 (D) 3

29. A is B's wife's husband's brother. C and D are sisters of B. How is A related to C?

- (A) Wife (B) Sister
(C) Brother (D) Sister-in-law

30. A train runs for 2 hrs at the speed of 40 km/h. It runs for $4\frac{1}{2}$ hrs at the speed of 60 km/h and then runs for $3\frac{1}{2}$ hrs, at the speed of 70 km/h. Find the average speed of the train.

- (A) 56.87 km/h (B) 57.1 km/h
(C) 59.5 km/h (D) 80 km/h

31. After giving a discount of 15% an article is sold at ₹2550/-. what is its marked price?

- (A) 2900 (B) 3700
(C) 3200 (D) 3000

Directions : In question nos. 32 to 34, select the missing number from the given responses.

32. $\begin{matrix} 25 & 17 & 41 \\ 32 & 40 & 11 \\ 26 & ? & 31 \end{matrix}$

- (A) 38 (B) 26 (C) 25 (D) 34

33. $\begin{matrix} 3 & 4 & 13 \\ 8 & 8 & 56 \\ 5 & 3 & ? \end{matrix}$

- (A) 8 (B) 2 (C) 4 (D) 6

34. $\begin{matrix} 3 & 5 & 2 \\ 6 & 7 & 8 \\ 9 & 10 & 4 \\ 7 & 65 & 30 \end{matrix}$

- (A) 52 (B) 49 (C) 50 (D) 51

SPACE FOR ROUGH WORK

35. Ram and Ravi start together from a point in opposite direction on scooters. Ram's speed is 21 km/h and Ravi's speed is 15 km/h. What will be the distance between them after 20 minutes?

- (A) 12 km (B) 45 km
(C) 25 km (D) 16 km

36. One morning after sunrise, Gangadhar was walking facing a pole. The shadow of the pole fell exactly to his right, which direction was he facing?

- (A) North (B) East
(C) South (D) West

Directions : In question nos. 37 and 38, one statement(s) is followed by two conclusions/Assumptions, I and II. You have to consider the statement(s) to be true, even if they seem(s) to be at variance from commonly known facts. You have to decide which of the given conclusions/assumption, if any, follow(s) from the given statements(s).

37. Statement : Read this notice before entering into the stadium.

- Assumption : I. People are literate.
II. No blind person comes to the stadium.

- (A) Both I and II are implicit
(B) Only assumption I is implicit
(C) Only assumption II is implicit
(D) Neither I nor II is implicit

38. Statement : A car had driven off the road and hit a tree. The driver was efficient enough. The road was not good. The driver drove the car for last fifteen years.

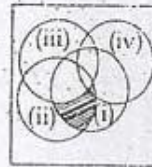
- Conclusion : I. The accident occurred due to bad condition of road.
II. There was a mechanical fault in the car.

- (A) None of the conclusions can be true
(B) Only conclusion I is true
(C) Only conclusion II is true
(D) Both the conclusions can be true

39. The following diagram represents people who speak different languages.

- (i) Kannada (ii) English
(iii) Hindi (iv) Marathi

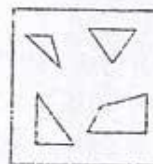
What does the shaded area represents?



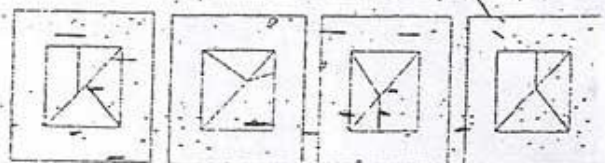
- (A) People who speak Kannada, English and Marathi.
(B) People who speak Kannada and English.
(C) People who speak English and Hindi.
(D) People who speak Kannada, English and Hindi.

40. Form the correct pattern with the segments given.

Question figure :



Answer figures :



- (A) (B) (C) (D)

SPACE FOR ROUGH WORK

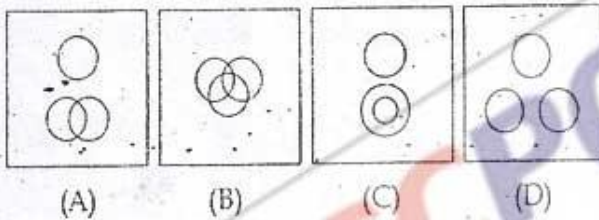
41. How many triangles are there in this figure?

Question figure:

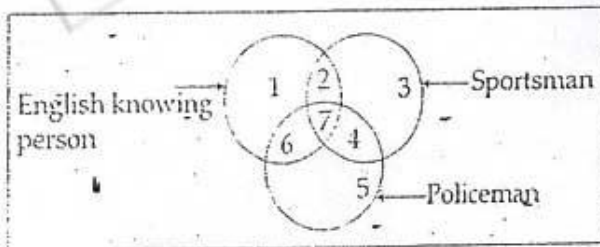


- (A) 16 or more (B) 10
(C) 12 (D) 14

42. Which one of the following diagrams represents the correct relationship with the Class teacher, Girls and Boys of Std. VIII?



43. There are three intersecting circles representing English knowing persons, sportsman and persons who are working as policeman. Different regions so obtained in the figure are marked 1, 2, 3, 4, 5, 6 and 7.

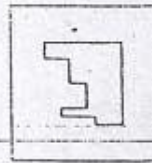


If you select persons, who do not know English and are not policeman, which of the region is to be selected?

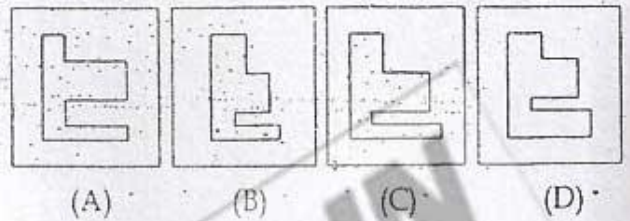
- (A) 3 (B) 2 (C) 7 (D) 6

Directions: In question nos. 44 and 45, which answer figure will complete the pattern in the question figure?

44. Question figure:



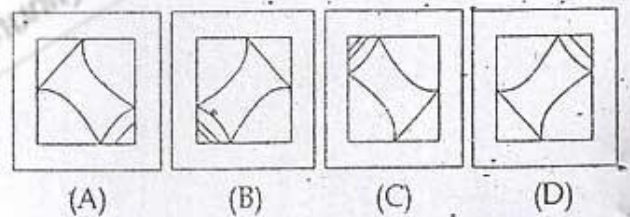
Answer figures:



45. Question figure:

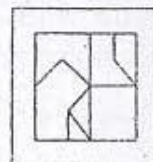


Answer figures:

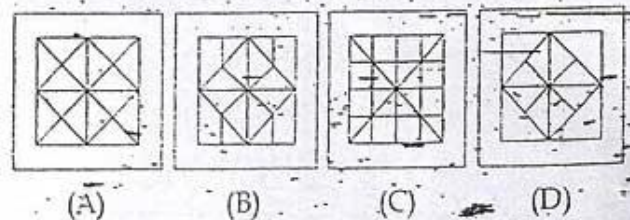


Direction: In question nos. 46 and 47, from the given answer figures, select the one in which the question figure is hidden/embedded.

46. Question figure:

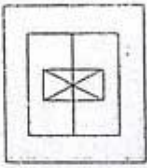


Answer figures:

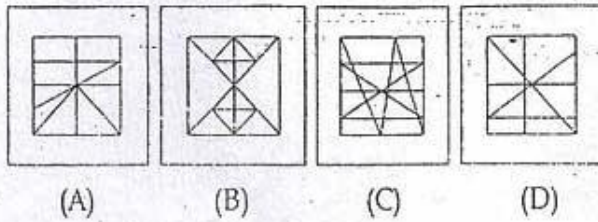


SPACE FOR ROUGH WORK

47. Question figure :

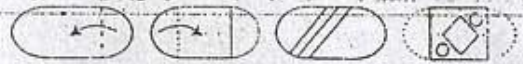


Answer figures :

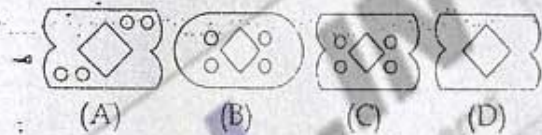


49. A piece of paper is folded and cut as shown below in the question figures. From the given answer figures, indicate how it will appear when opened.

Question figures :

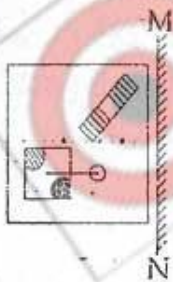


Answer figures :

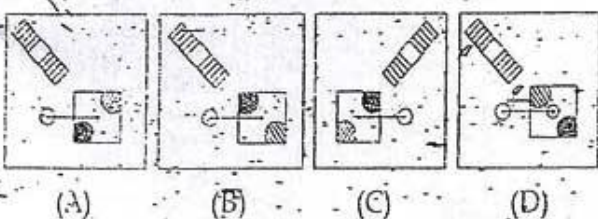


48. If a mirror is placed on the line MN, then which of the answer figures is the right image of the given figure?

Question figure :



Answer figures :



50. A word is represented by only one set of numbers as given in any one of the alternatives. The sets of numbers given in the alternatives are represented by two classes of alphabets as in two matrices given below. The columns and rows of Matrix I are numbered from 0 to 4 and that of Matrix II are numbered from 5 to 9. A letter from these matrices can be represented first by its row and next by its column, e.g., 'N' can be represented by 43, 34, etc., and 'R' can be represented by 97, 68, etc. Similarly, you have to identify the set for the word given 'POLO'.

Matrix - I

	0	1	2	3	4
4	K	L	M	N	O
3	L	M	K	O	N
2	N	O	L	M	K
1	M	N	O	K	L
0	O	K	N	L	M

Matrix - II

	5	6	7	8	9
9	P	Q	R	S	T
8	T	S	Q	P	R
7	R	T	S	Q	P
6	S	P	T	R	Q
5	Q	R	P	T	S

(A) 88, 33, 26, 48

(B) 66, 21, 24, 25

(C) 79, 12, 16, 36

(D) 95, 00, 22, 44

SPACE FOR ROUGH WORK

GENERAL AWARENESS

51. The Constitution of India, describes India as :
 (A) Unitary (B) Union of states
 (C) A Federation (D) A quasi-federal
52. The threshold frequency is the frequency below which :
 (A) photo electric emission is not possible
 (B) photo current is constant
 (C) photo current increases with voltage
 (D) photo current decreases with voltage
53. The damage of the human body due to radiation (X-rays or γ -rays etc.) is measured in :
 (A) Curie (B) Rads
 (C) Rems (D) Roentgen
54. Which of the followings is not correct ?
 (A) NGT - National Growth Tribunal
 (B) MSP - Minimum Support Price
 (C) NMA - National Monuments Authority
 (D) PIL - Public Interest Litigation
55. Dactylogram is related with :
 (A) cereals (B) finger print
 (C) teleprinter (D) perumbulator
56. Coupling and repulsion are the two states of :
 (A) mutation (B) crossing over
 (C) linkage (D) chiasma
57. The compound that has the least value for octane number is :
 (A) 2, 2 - dimethyl hexane (B) n - heptane
 (C) 2 - methyl heptane (D) Iso - octane
58. The current spell of cold wave in the US has been a fall out of the :
 (A) climate and energy
 (B) political administration
 (C) polar vortex
 (D) biodiversity and habitats
59. Total assembly segments in Delhi are :
 (A) 70 (B) 40 (C) 50 (D) 60
60. An increase in the quantity supplied suggests :
 (A) a movement down along the supply curve
 (B) a rightward shift of the supply curve
 (C) a leftward shift of the supply curve
 (D) a movement up along the supply curve
61. The freezing point of fresh water is _____
 (A) 5°C (B) 0°C (C) 4°C (D) 3°C
62. The Minimum Support Price for food grains was introduced in the year :
 (A) 1974 (B) 1954
 (C) 1944 (D) 1964
63. Who said that "Where there is no Law there will not be Liberty" ?
 (A) Machiavelli (B) John Locke
 (C) Karl Marx (D) Plato
64. Obsidian, Andesite, Gabbro and Perodite are :
 (A) Sedimentary rocks
 (B) Extrusive rocks
 (C) Metamorphic rocks
 (D) Intrusive rocks
65. Potato was introduced to Europe by :
 (A) Spanish (B) Dutch
 (C) Portuguese (D) Germans
66. Transition ions absorb light in :
 (A) microwave region (B) visible region
 (C) infrared region (D) ultraviolet region
67. Which one of the following is used as secondary storage system in computer ?
 (A) EPROM (B) ROM
 (C) RAM (D) Floppy
68. Virtually treeless, sparse vegetation is found in :
 (A) Tundra (B) Chaparral
 (C) Taiga (D) Alpine

69. Who benefits the most during the inflationary period?
 (A) entrepreneurs
 (B) government servants
 (C) corporate servants
 (D) creditors
70. Flywheel is an important part of a steam engine because it:
 (A) decreases the moment of inertia
 (B) gives strength to the engine
 (C) accelerates the speed of the engine
 (D) helps the engine in keeping the speed uniform
71. Who was the Delhi Sultan to impose Jizya even on the Brahmins?
 (A) Muhammad Tughluq (B) Balban
 (C) Ala-ud-din Khilji (D) Firuz Tughluq
72. Tesla is a unit of magnetic:
 (A) moment (B) field
 (C) flux (D) induction
73. The production, marketing, storage, advertisement and consumption of smokeless tobacco is banned in:
 (A) Nagaland (B) Meghalaya
 (C) Assam (D) Arunachal Pradesh
74. 'Democratic Centralism' is an important feature of a:
 (A) Totalitarian state (B) Socialist state
 (C) Communist state (D) Democratic state
75. Sir C. V. Raman was awarded Nobel Prize for his work on:
 (A) Cryogenics (B) Sonometer
 (C) Light Scattering (D) Radio activity
76. Which of the following does not have a Stupa?
 (A) Barhut (B) Dhamek
 (C) Ranchi (D) Sanchi
77. Preparation of butter, ghee by a household for their own use is a part of:
 (A) industrial production
 (B) consumption
 (C) own-account production
 (D) household capital formation
78. 'Shadow Cabinet' is the feature of Administrative system of:
 (A) France (B) Japan
 (C) Britain (D) USA
79. Deficiency of iron causes:
 (A) Rickets (B) Scurvy
 (C) Goitre (D) Polio
80. "Krishi Karman Award" 2012-13 for all time record in food grain production was given to:
 (A) Tamil Nadu (B) Odisha
 (C) Madhya Pradesh (D) Haryana
81. Who is known as the Father of 'Indian Unrest' ?
 (A) Aurobindo Ghosh
 (B) Bipin Chandrapal
 (C) Bal Gangadhar Tilak
 (D) Lalalajpat Rai
82. The plants, which grow under water stress conditions of deserts are:
 (A) Heliophytes (B) Sciophytes
 (C) Epiphytes (D) Xerophytes
83. Consumer Protection Act 1986, was amended in:
 (A) 1994 (B) 1991 (C) 1992 (D) 199
84. Which body is constituted by the President of India to advise on the decision of Central Resource between the centre and the state?
 (A) Planning Commission
 (B) Taxation Enquiry Commission
 (C) Tariff Commission
 (D) Finance Commission
85. The UNIX operating system is suitable for:
 (A) Distributed Processing
 (B) Single user
 (C) Multi user
 (D) Real-Time Processing

86. The pair of compounds used as anaesthetic in medicines:
- (A) Chloroform, Nitrogen dioxide
(B) Nitrogen dioxide, ether
(C) Ether, Ammonia
(D) Nitrous oxide, Chloroform
87. Study of organisms in relation to their environment is called:
- (A) Entomology (B) Palynology
(C) Ecology (D) Zoology.
88. "Ryder Cup" is awarded to the players of:
- (A) Cards (B) Golf
(C) Baseball (D) Basket ball
89. Stamens are fused with each other by their anthers and also with the petals in:
- (A) Compositae (B) Euphorbiaceae
(C) Leguminosae (D) Liliaceae
90. Which National Highway is called Shershah Suri Marg?
- (A) National Highway No : 7
(B) National Highway No : 1
(C) National Highway No : 3
(D) National Highway No : 8
91. The site of birth [nativity] of Gautam Buddha is marked by:
- (A) a statue
(B) a Peepal Tree
(C) a monastery
(D) a "Rumundei Pillar" of Ashok Maurya
92. The type of fruit obtained from a multicarpillary, apocarpous gynoecium is:
- (A) simple (B) multiple
(C) composite (D) aggregate
93. The percentage of carbon in cast iron is:
- (A) 6 to 8 (B) 3 to 5
(C) 5.1 to 0.25 (D) 0.5 to 1.5
94. The unit of noise pollution (level) is:
- (A) decibel (B) decimal
(C) ppm (D) None of the above
95. In relation to the State Government, local government exercises:
- (A) Superior Authority
(B) Independent Authority
(C) Co-ordinate Authority
(D) Delegated Authority
96. Section of IPC, which deals with LGBT (Lesbian, Gay, Bisexual and Transgender) community is:
- (A) 377 (B) 376
(C) 370 (D) None of these
97. Who among the following is the founder of the "Azad Hind Fauj"?
- (A) Vir Savarkar
(B) Chandrashekhar Azad
(C) Lala Har Dayal
(D) Subash Chandra Bose
98. Soil factors are otherwise known as:
- (A) Physiographic factors (B) Climatic factors
(C) Edaphic factors (D) Biotic factors
99. Where does the cabbage store food?
- (A) Fruit (B) Root
(C) Leaves (D) Stem
100. Which of the following books is not written by Jawaharlal Nehru?
- (A) An Autobiography
(B) Glimpses of World History
(C) Discovery of India
(D) My Experiments with Truth

PART - C

QUANTITATIVE APTITUDE

101. What is the product of the roots of the equation $x^2 - \sqrt{3} = 0$?
- (A) $-\sqrt{3}i$ (B) $-\sqrt{3}$
(C) $+\sqrt{3}$ (D) $\sqrt{3}i$
102. If goods be purchased for ₹ 450 and one third sold at a loss of 10%. At what gain percent should the remainder be sold so as to gain 20% on the whole transaction?
- (A) 28% (B) 30% (C) 32% (D) 35%
103. For what value (s) of K the expression $p + \frac{1}{4}\sqrt{p} + K^2$ is a perfect square?
- (A) $\pm \frac{1}{8}$ (B) $\pm \frac{1}{2}$ (C) $\pm \frac{1}{3}$ (D) $\pm \frac{1}{4}$
104. A and B together can complete a job in 8 days. Both B and C, working alone can finish the same job in 12 days. A and B commence work on the job, and works for 4 days, whereupon A leaves. B continues for 2 more days, and then leaves too. C now starts working, and finishes the job. How many days did C require?
- (A) 3 (B) 4 (C) 5 (D) 8
105. In ΔABC , $\angle B = 90^\circ$ and $AB : BC = 2 : 1$. The value of $\sin A + \cot C$ is:
- (A) $2 + \sqrt{5}$ (B) $3\sqrt{5}$
(C) $3 + \sqrt{5}$ (D) $\frac{2 + \sqrt{5}}{2\sqrt{5}}$
106. The value of $\frac{\sin 43^\circ}{\cos 47^\circ} + \frac{\cos 19^\circ}{\sin 71^\circ} - 8 \cos^2 60^\circ$ is:
- (A) 2 (B) -1 (C) 0 (D) 1
107. If $\tan \theta + \cot \theta = 2$ then the value of θ is:
- (A) 90° (B) 30° (C) 45° (D) 60°
108. If $x + y = 15$ then $(x - 10)^3 + (y - 5)^3$ is:
- (A) 625 (B) 0 (C) 25 (D) 125
109. If ΔFGH is isosceles and $FG < 3$ cm, $GH = 8$ cm, then of the following, the true relation is:
- (A) $FH > GH$ (B) $GH < GF$
(C) $GH = FH$ (D) $CF = GH$
110. The minimum numbers of common tangents drawn to two circles when both the circle touches externally is:
- (A) 3 (B) 0 (C) 1 (D) 2
111. If $x - \frac{1}{x} = 1$ then the value of $\frac{x^4 - \frac{1}{x^2}}{3x^2 + 5x - 3}$ is:
- (A) $\frac{3}{4}$ (B) 0 (C) $\frac{1}{4}$ (D) $\frac{1}{2}$
112. If $a = 2 + \sqrt{3}$, then the value of $\left(a^2 + \frac{1}{a^2}\right)$ is:
- (A) 16 (B) 10 (C) 12 (D) 14
113. If $\frac{b-c}{a} + \frac{a+c}{b} + \frac{a-b}{c} = 1$ and $a-b+c \neq 0$ then which one of the following relation is true?
- (A) $\frac{1}{b} = \frac{1}{a} - \frac{1}{c}$ (B) $\frac{1}{b} = \frac{1}{a} + \frac{1}{c}$
(C) $\frac{1}{c} = \frac{1}{a} + \frac{1}{b}$ (D) $\frac{1}{a} = \frac{1}{b} + \frac{1}{c}$
114. For a triangle ABC, D and E are two points on AB and AC such that $AD = \frac{1}{4} AB$, $AE = \frac{1}{4} AC$. If $BC = 12$ cm then DE is:
- (A) 3 cm (B) 6 cm (C) 5 cm (D) 4 cm
115. If ABC is an equilateral triangle and P, Q, R respectively denote the middle points of AB, BC, CA then:
- (A) $PQ + QR + PR = 2AB$
(B) PQR must be a right angled triangle.
(C) PQR must be an equilateral triangle
(D) $PQ + QR + PR = AB$

SPACE FOR ROUGH WORK

116. If $x = \frac{\cos \theta}{1 - \sin \theta}$, then $\frac{\cos \theta}{1 + \sin \theta}$ is equal to:

- (A) $\frac{1}{x+1}$ (B) $\frac{1}{1-x}$
 (C) $x-1$ (D) $\frac{1}{x}$

117. Anand marks up the price of an article by 50% and then allows a discount of 20% and sells it to Balaji. Balaji sells it for ₹20 more than what he purchased for, this S.P is 30% more than the original C.P of the article. Then Balaji's profit % is:

- (A) 8.33% (B) 9%
 (C) 7.5% (D) 6.66%

118. If out of 10 selected students for an examination, 3 were of 20 years age, 4 of 21 and 3 of 22 years, the average age of the group is:

- (A) 21.5 years (B) 20 years
 (C) 22 years (D) 21 years.

119. The numerical value of

$$1 + \frac{1}{\cot^2 63^\circ} - \sec^2 27^\circ + \frac{1}{\sin^2 63^\circ} - \operatorname{cosec}^2 27^\circ$$

- (A) -1 (B) 0 (C) 4 (D) 2

120. The cost of a house is ₹ X lakhs in 2005. After 3 years, the owner of the house sold it for 25% more than she paid it. But she has to pay a tax of 50% of the gain. The tax amount she has to pay is:

- (A) X/4 (B) X/24 (C) X/2 (D) X/8

121. If the side of a square is reduced by 50%, its area will be reduced by:

- (A) 60% (B) 50% (C) 75% (D) 80%

122. A cistern normally takes 10 hours to be filled by a tap. But because of a leak, it takes 2 hours more. In how many hours will the leak empty a full cistern?

- (A) 30 (B) 60 (C) 45 (D) 48

123. If $x = \sqrt{3} + \sqrt{2}$ then the value of $x^3 - \frac{1}{x^3}$ is:

- (A) $22\sqrt{2}$ (B) $8\sqrt{2}$
 (C) $10\sqrt{2}$ (D) $14\sqrt{2}$

124. In a triangle, if orthocentre, circumcentre, incentre and centroid coincide, then the triangle must be:

- (A) equilateral (B) right-angled
 (C) obtuse angled (D) isosceles.

125. If $\sin \frac{\pi x}{2} = x^2 - 2x + 2$, then the value of x is:

- (A) 0 (B) 1
 (C) -1 (D) none of these

126. A man saves ₹ 25 on the purchase of an article on which a discount of 20% is allowed. How much did the man pay?

- (A) ₹ 100 (B) ₹ 125
 (C) ₹ 75 (D) ₹ 150

127. A shopkeeper marks his goods 40% above the cost price. He allows a discount of 5% for cash payment to his customers. He receives ₹ 1064 after paying the discount. His profit is:

- (A) ₹ 200 (B) ₹ 800
 (C) ₹ 264 (D) ₹ 164

128. The term to be added to $121a^2 + 64b^2$ to make a perfect square is:

- (A) 178 ab (B) 188 b²a
 (C) 176 ab (D) 276 a²b

129. If $\cos \pi x = x^2 - x + \frac{5}{4}$, the value of x will be:

- (A) 0 (B) 1
 (C) -1 (D) None of the above

130. Area of the floor of a cubical room is 48 sq.m. The length of the longest rod that can be kept in that room is:

- (A) 18 m (B) 6 m
 (C) 9 m (D) 12 m

SPACE FOR ROUGH WORK

131. If a, b, c, d, e are five consecutive odd numbers, their average is:

- (A) $5(a+b+c+d+e)$ (B) $a+4$
(C) $5(a+4)$ (D) $\frac{abcde}{5}$

132. A train crosses a platform in 30 seconds travelling with a speed of 60 km/h. If the length of the train be 200 metres, then the length (in metres) of the platform is:

- (A) 200 (B) 500 (C) 400 (D) 300

133. If 15% of x is same as 20% of y then $x : y$ is:

- (A) 6:5 (B) 3:4 (C) 4:3 (D) 5:4

134. Which is the largest of the following fractions?

$$\frac{2}{3}, \frac{3}{5}, \frac{8}{11}, \frac{11}{17}$$

- (A) $\frac{11}{17}$ (B) $\frac{2}{3}$ (C) $\frac{8}{11}$ (D) $\frac{3}{5}$

135. Two triangles ABC and PQR are congruent. If the area of ΔABC is 60 sq. cm, then area of ΔPQR will be:

- (A) 15 sq. cm (B) 120 sq. cm
(C) 60 sq. cm (D) 30 sq. cm

136. The least number which must be added to 1728 to make it a perfect square is

- (A) 38 (B) 30 (C) 36 (D) 32

137. You arrive at your school 5 minutes late if you walk with a speed of 4 km/h, but you arrive 10 minutes before the scheduled time if you walk with a speed of 5 km/h. The distance of your school from your house (in km) is:

- (A) 10 (B) 2 (C) 4 (D) 5

138. On what sum of money will the difference between S.I and C.I for 2 years at 5% per annum be equal to ₹ 25/-?

- (A) 9,500 (B) 9,000
(C) 10,000 (D) 10,500

139. A sum of ₹ 76 is divided among A, B, C in such a way that A gets ₹ 7 more than that what B gets and B gets ₹ 6 more than what C gets. The ratio of their shares is:

- (A) 32:24:20 (B) 19:25:33
(C) 19:24:33 (D) 32:25:19

140. The angle subtended by a chord at its centre is 60° , then the ratio between chord and radius is:

- (A) $\sqrt{2}:1$ (B) 2:1
(C) 1:2 (D) 1:1

141. A tank 40 m long, 30 m broad and 12 m deep is dug in a field 1000 m long and 30 m wide. By how much will the level of the field rise if the earth dug out of the tank is evenly spread over the field?

- (A) 0.5 m (B) 5 m
(C) 2 m (D) 1.2 m

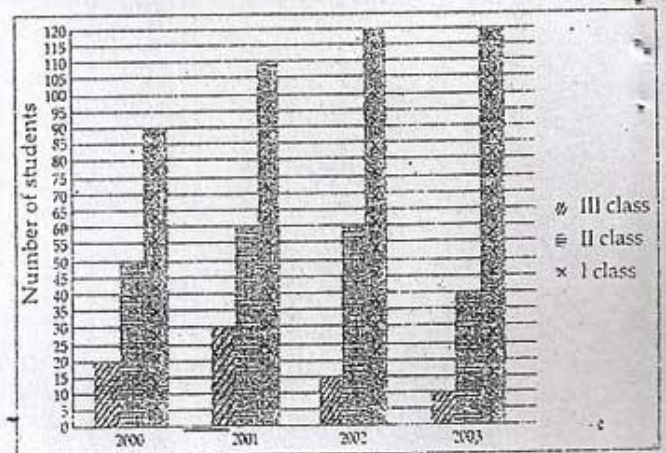
142. If the opposite sides of a quadrilateral and also its diagonals are equal, then each of the angle of the quadrilateral is:

- (A) 100° (B) 60° (C) 90° (D) 120°

143. A can do a piece of work in 6 days, B in 10 days and C in 15 days. They jointly complete the work and earn ₹ 300. The sum of their wages for 2 days is:

- (A) ₹ 160 (B) ₹ 120
(C) ₹ 180 (D) ₹ 200

The graph shows the result of 10th class students of a school for 4 years. Study the graph and answer Q.No. 144 to 147.



144. The year in which the maximum number of students appeared for the 10th class exam is:

- (A) 2003 (B) 2000 (C) 2001 (D) 2002

145. The percentage increase of first class in the year 2003 over the year 2002 is approximately:

- (A) 10% (B) 9% (C) 12% (D) 0%

SPACE FOR ROUGH WORK

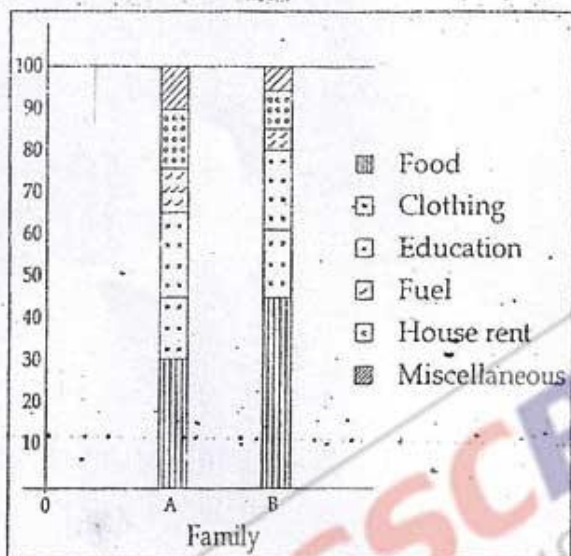
146. The number of students appeared for the 10th class exam in the year 2002 is :

- (A) 200 (B) 120 (C) 180 (D) 195

147. The ratio of students scored second class to the total student appeared in the year 2000 is :

- (A) 5 : 16 (B) 11 : 16 (C) 3 : 16 (D) 4 : 17

Study the diagram and answer Q. No. 148 to 150.



148. What fraction of the total expenditure is spent on Education in family A ?

- (A) 1/5 (B) 13/26 (C) 2/3 (D) 9/13

149. If the total annual expenditure of family B is ₹ 10,000 then money spent on clothes during the year is :

- (A) ₹ 1500 (B) ₹ 2000
(C) ₹ 600 (D) ₹ 6000

150. If the total annual expenditure of family A is ₹ 30,000 then money spent on food, clothes and house rent is :

- (A) ₹ 15,000 (B) ₹ 18,500
(C) ₹ 18,000 (D) ₹ 21,000

FOR VISUALLY HANDICAPPED CANDIDATES ONLY

144. The average weight of 150 workers is 60 kg. The average weight of men is 80 kg and that of the ladies is 50 kg. The number of ladies is :

- (A) 100 (B) 50 (C) 70 (D) 78

145. If $x=2$, $y=4$, $p=8$, $q=10$, find the value of

$$\sqrt{xy p} + \frac{2y}{p-y} + 2q.$$

- (A) 24 (B) 30 (C) 26 (D) 32

146. Find the odd out of the following set of numbers 15, 20, 27, 32, 39, 40 :

- (A) 39 (B) 15 (C) 40 (D) 27

147. On what sum of money will the simple interest for 3 years at 8% per annum be half of the compound interest on ₹ 400 for 2 years at 10% per annum ?

- (A) ₹ 205 (B) ₹ 165
(C) ₹ 175 (D) ₹ 195

148. In a right angled triangle, with sides a and b and hypotenuse c if the altitude on the hypotenuse is x, then :

- (A) $\frac{1}{a^2} + \frac{1}{b^2} = \frac{1}{x^2}$ (B) $ab = x^2$
(C) $\frac{ab}{c} = x^2$ (D) $a^2 + b^2 = 2x^2$

149. In 45 litre of phenol-water the ratio of phenol to water is 2 : 23. The amount of water that should be added to it to make the ratio 3 : 37 :

- (A) 2 litre (B) 4 litre
(C) 3 litre (D) 5 litre

150. The selling price of 12 articles is equal to the cost price of 15 articles. The gain percent is :

- (A) 80% (B) $6\frac{2}{3}\%$
(C) 20% (D) 25%

SPACE FOR ROUGH WORK

ENGLISH COMPREHENSION

Directions: In Question nos. 151 to 155, some parts of the sentences have errors and some are correct. Find out which part of a sentence has an error and blacken the oval [●] corresponding to the appropriate letter (A, B, C). If a sentence is free from error, blacken the oval corresponding to (D) in the Answer Sheet.

151. I sprained my ankle / when I was /
(A) (B)
playing basketball. / No error.
(C) (D)
152. After tasting both / John prefers /
(A) (B)
tea than coffee. / No Error.
(C) (D)
153. It is time /
(A)
we should accept all our people as equals /
(B)
and as partners in the task of building a strong and
united nation. / No error.
(C) (D)
154. I loved / the drawings /
(A) (B)
they were so real. / No error.
(C) (D)
155. Suddenly they saw a car coming /
(A)
at a break neck speed. /
(B)
An old man were crossing the road at the zebra
crossing. / No error.
(C) (D)

Directions: In Question nos. 156 to 160, sentences are given with blanks to be filled in with an appropriate word(s). Four alternatives are suggested for each question. Choose the correct alternative out of the four and indicate it by blackening the appropriate oval [●] in the Answer Sheet.

156. Bob and Jane decided to tie the knot because

(A) they wanted to make a long rope
(B) it had come undone
(C) they loved one another
(D) they needed to save money
157. Leila said the new restaurant was nothing to write about. She thought it was _____
(A) splendid (B) excellent
(C) just average (D) really terrible
158. The archer missed the _____ by an inch.
(A) blow (B) aim
(C) score (D) point
159. My Nigerian friend, Fela is having trouble finding work here in London, but he says if push comes to shove he can always _____
(A) end of the journey that is life
(B) go back to Nigeria
(C) go to jail
(D) win the lottery
160. If you say to someone "You're so full of yourself" they'll probably feel _____
(A) calm (B) proud
(C) upset (D) pleased

Directions: In Question nos. 161 to 163, out of the four alternatives, choose the one which best expresses the meaning of the given word and mark it in the Answer Sheet.

161. EXTRICATE
(A) Complicate (B) Pull
(C) Free (D) Tie

162. CREDIBLE:
 (A) believable (B) worthy
 (C) charming (D) serious

170. The newly elected Chief Minister has promised to bring about changes in the state.
 (A) carry (B) cause to happen
 (C) produce (D) make

163. OBSTREPEROUS:
 (A) Awkward (B) Sullen
 (C) Unruly (D) Lazy

171. The mention of her former husband's name still makes Rita foam at the mouth.
 (A) shy (B) fall sick
 (C) angry (D) vomit

Directions : In Question nos. 164 to 166, choose the word opposite in meaning to the given word and mark it in the Answer Sheet.

164. DISSENT:
 (A) unacceptable (B) agreement
 (C) discord (D) disagreement

Directions : In Question nos. 172 to 181, a sentence/ a part of the sentence is underlined. Below are given alternatives to the underlined part at (A), (B), (C) which may improve the sentence. Choose the correct alternative. In case no improvement is needed your answer is (D). Mark your answer in the Answer Sheet.

165. GROUP:
 (A) alone (B) solitary
 (C) singular (D) individual

172. The office is soon to be closed.
 (A) just to (B) about to
 (C) where to (D) No improvement

166. ACQUIT:
 (A) smart (B) condemn
 (C) despair (D) mild

173. Can you please give me some leave?
 (A) grant for me (B) grant me
 (C) grant from me (D) No improvement

Directions : In Questions No. 167 to 171, four alternatives are given for the Idiom/Phrase underlined in the sentence. Choose the alternative which best expresses the meaning of the Idiom/Phrase and mark it in the Answer Sheet.

167. He gave vent to his pleasure with a smile.
 (A) expressed (B) enjoyed
 (C) shared (D) allowed

174. He found a wooden chair that has broken in the room.
 (A) wooden and broken chair
 (B) broken wooden chair
 (C) broken and wooden chair
 (D) No improvement

168. We must husband our resources against hard times.
 (A) sing (B) concede
 (C) save (D) support

175. The hosts were taken aback when many guests who had been invited did not turn up for the party.
 (A) had been invited (B) had invited
 (C) was invited (D) No improvement

169. After his business failed, he had to work very hard to keep the wolf from the door.
 (A) regain his lost position
 (B) defend from enemies
 (C) keep away extreme poverty
 (D) earn an honest living

176. The athletes who have won prizes are being honoured.
 (A) The prize winning athletes
 (B) The athletes who are given prizes
 (C) The athletes who are winning prizes
 (D) No improvement

$\frac{5+13+1}{3} = 1$

177. Motor cars carry people from one place to another.
 (A) from place to place
 (B) about the place
 (C) for travel
 (D) No improvement

178. The robbers fled before the police came.
 (A) arrived (B) were coming
 (C) had come (D) No improvement

179. The teacher was very proficient in his subject.
 (A) expert (B) well versed
 (C) proficient (D) No improvement

180. Then with all his loot he sailed inwards Scotland's shore.
 (A) onwards (B) towards
 (C) forward (D) No improvement

181. The master aimed a blow to Oliver's head with the ladle.
 (A) a throw at (B) a punch in
 (C) a blow at (D) No improvement

Directions : In Question nos. 182 to 188, out of the four alternatives, choose the one which can be substituted for the given words/sentences and indicate it by blackening the appropriate oval [] in the Answer Sheet.

182. An extract from a book of writing :
 (A) Footnote (B) Preface
 (C) Excerpt (D) Review

183. A person who is self-centred :
 (A) narcissist (B) eccentric
 (C) egoist (D) masochist

184. The firing of many guns at the same time to mark an occasion :
 (A) attack (B) volley
 (C) fusillade (D) salvo

185. A word that reads the same backwards as forwards :
 (A) acronym (B) palindrome
 (C) acrostic (D) homophone

186. A principle or standard by which anything is of can be judged :
 (A) epitome (B) criterion
 (C) manifesto (D) copyright

187. A person who supports or speaks in favour of something :

(A) adviser (B) volunteer
 (C) advocate (D) assistance

188. One living on vegetables :

(A) carnivore (B) barbarian
 (C) vegetarian (D) herbivore

Directions : In Question nos. 189 and 190, four words are given in each question, out of which only one word is correctly spelt. Find the correctly spelt word and mark your answer in the Answer Sheet.

189. (A) Posseseon (B) Possession
 (C) Possession (D) Possesian

190. (A) Immaculete (B) Imakulate
 (C) Immakulate (D) Immaculate

Directions : In Question nos. 191 to 200, you have two brief passages with 5 questions following each passage. Read the passages carefully and choose the best answer to each question out of the four alternatives and mark it by blackening the appropriate oval [] in the Answer Sheet.

Passage - I (Q. No. 191-195)

We are living in the Age of Science. Everyday new inventions are being made for the good of humanity. The scientific inventions began after the Industrial Revolution of 1789. Within these 200 years, science has made a wonderful progress. The aeroplane is one of the most important inventions of science during the Modern Age. It is the fastest means of transport known so far. An aeroplane resembles a flying bird in shape. Inside there are seats for the passengers and a cabin for the pilot. This cabin is called a cockpit. It has an engine that is worked by petrol. It is all made up of metal and can fly at a very high speed. Before taking off it runs on the runway for some distance to gather speed. Then it suddenly hops up the earth and takes off.

191. The _____ is one of the most important inventions of science during the Modern Age.
 (A) motor vehicle (B) train
 (C) ship (D) aeroplane

192. An aeroplane has an engine that is worked by _____

- (A) steam (B) gas
(C) diesel (D) petrol

193. The scientific invention began after the Industrial Revolution of _____

- (A) 1879 (B) 1779
(C) 1789 (D) 1889

194. The cabin for the pilot is called a _____

- (A) cockpit (B) chamber
(C) cubicle (D) cube

195. We are living in the _____

- (A) Modern Age
(B) Age of science
(C) Age of inventions
(D) Age of industrialization

Passage - II (Q. No. 196 - 200)

The National Highways Network of India measures over 70,934 km as of 2010, including over 1,000 km of limited-access expressways. Out of 71,000 km of National Highways 15,000 plus km are 4 or 6 lanes and remaining 50,000 km are 2 lanes. The National Highways Authority of India (NHAI) is the nodal agency responsible for building, upgrading and maintaining most of the national highways network. The National Highways Development Project (NHDP) is a major effort to expand and upgrade the network of highways. NHAI often uses a public-private partnership model for highway development, maintenance and toll-collection. National highways constituted about 2% of all the roads in India, but carried about 40% of the total road traffic as of 2010. The majority of existing national highways are two-lane roads (one lane in each direction),

though much of this is being expanded to four-lanes, and some to six or eight lanes. Some sections of the network are toll roads. Over 30,000 km of new highways are planned or under construction as part of the NHDP, as of 2011. This includes over 2,600 km of expressways currently under construction.

196. What is the responsibility of the NHAI?

- (A) control of National Highways
(B) expansion of National Highways
(C) planning of National Highways
(D) building, upgrading and maintaining of National Highways

197. What percentage of roads in India are National Highways?

- (A) 4% (B) 40%
(C) 2% (D) 30%

198. What is the current measurement of expressways under construction in India?

- (A) 2,600 km (B) 1,000 km
(C) 15,000 km (D) 30,000 km

199. The majority of National Highways in India have:

- (A) eight-lanes (B) four-lanes
(C) two-lanes (D) six-lanes

200. What is the measurement of two-lane National Highways of India?

- (A) 50,000 km (B) 71,000 km
(C) 15,000 km (D) 61,000 km

Handwritten calculations and notes at the bottom of the page, including a large '537' circled in red and other scribbles.

You Can Buy Study Kits, Books For SSC Examination

SSCPORTAL.IN Study Kit For SSC CGL Tier-1 Exam

India's Largest Online Community for SSC CGL, Govt Exams

MRP ₹ 5000
Offer Price ₹ 3500

24/7, Online Learning SUPPORT

- ❖ 1300+ Pages
- ❖ Available in Hard Copy
- ❖ Total 5 Booklets
- ❖ Medium: English
- ❖ 100% Syllabus Covered
- ❖ 5653+ MCQs

For Any Guidance Call at : +918800734161

Liberal Studies

SSCPORTAL.IN India's Largest Online Community for SSC CGL, Govt Exams

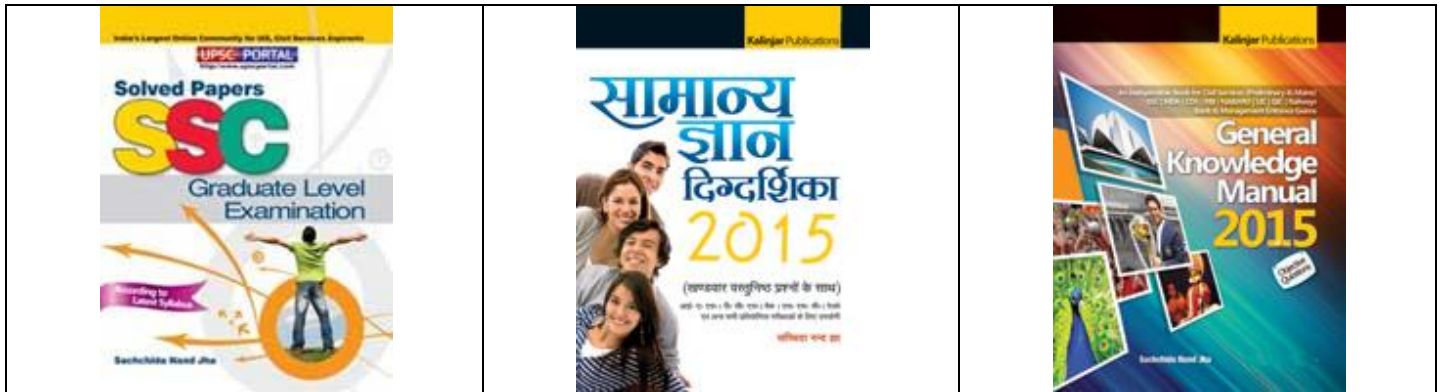
कर्मचारी चयन आयोग

संयुक्त स्नातक स्तरीय परीक्षा स्तर-1

माध्यम: हिन्दी
100 प्रतिशत नये पाठ्यक्रम पर आधारित
लगभग 900 + पृष्ठ
Available in Hard Copy

मूल्य रु 4000
रु 2100

किसी भी मार्गदर्शन के लिये हमारे विशेषज्ञ को फोन करें +91 8800734161



COVER 100% SYLLABUS IN STUDY KIT

Click Here To Buy Study Kit: <http://sscportal.in/community/study-kit>

Click Here To Buy Books: <http://sscportal.in/community/books>