



# Manav Bharti UNIVERSITY

A State Private University enacted by Act No. 22 of 2009 of State Legislature of Govt. of Himachal Pradesh and notified by University Grants Commission, Govt. of India

## Approvals & Accreditations



Information Brochure 2016-17



# CONTENTS

Page No.	Particulars
1-2	Messages
3	About Us
4-5	Infrastructure
6	Faculty of Engineering & Technology
6	Department of Computer Applications
7	Faculty of Arts & Languages
8	Faculty of Law
9	Faculty of Commerce & Management
10	Faculty of Pharmaceutical Sciences
11	International Tie-ups
12	Important Instructions
12	List of documents to be submitted with the Admission Form
12	Rules for Adjustment/ Refund of fee
12	Curbing the Menace of Ragging
13	Life@MBU

Download the e-brochure from  
[www.manavbhartiuniversity.edu.in](http://www.manavbhartiuniversity.edu.in)

## SCHEDULE OF DATES FOR ADMISSIONS

Last date for the receipt of duly filled in Admission Form	20 <sup>th</sup> June
Admission without Late Fee	Upto 23 <sup>rd</sup> July
Admission with Late Fee of Rs. 500/-	Upto 10 <sup>th</sup> August

Classes will start from 1<sup>st</sup> August

## MODE OF PAYMENT

1. The fee shall be paid either in Cash or by Demand Draft in favour of "Manav Bharti University" payable at "Solar".
2. For online submission of fee in bank:

Bank Name	UCO Bank, Kumarhatti, Solan (HP)
Account Number	05160210000120
Account Holder Name	Manav Bharti University
IFSC Code	UCBA0000516
MICR Code	173028060

The candidate must attach a copy of proof of online fee submitted along with the admission form.





# Message

**Prof. Roshan Lal**  
Vice-Chancellor

It gives me immense pleasure to welcome you all to this new academic session of Manav Bharti University. We at MBU strive very hard to inculcate in our students the true values of life and professional ethics. The curriculum has been so designed that the students learn not by rote but by participation and interaction. We encourage our students to ask WHAT, WHY and HOW.

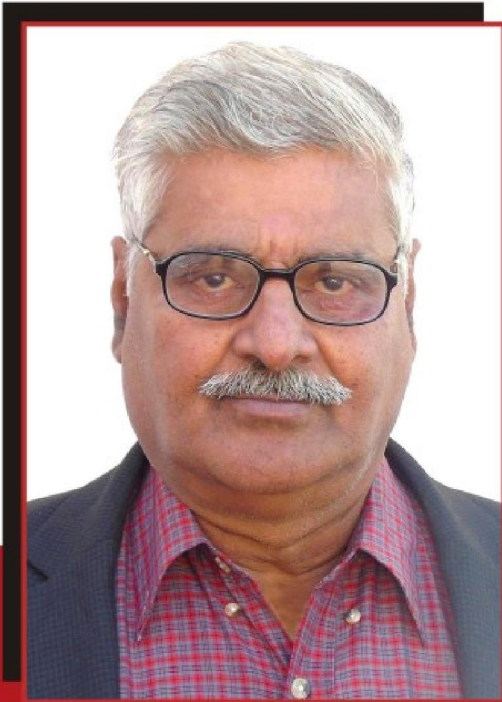
Manav Bharti University has created a name for itself in its short span of existence and today, we are known for our innovative approach of imparting education through well equipped and futuristic classrooms. We have a competent team of highly skilled and dedicated faculty members, who teach more out of enthusiasm than as a profession.

At MBU we welcome students who want to achieve their life's goals and we assure the parents that when they send their children to MBU they would get truly educated citizens back from us.

I also congratulate all the stakeholders on the great success of the 2<sup>nd</sup> annual convocation held on 2nd March, 2016.

Come join us, as we walk forward together on this exciting journey of self realisation and value based education.

JAI HIND



## Message

**Prof. K.K. Singh**  
Registrar

Education is a very important contributing element to both social mobility and economic developments. At this time of globalisation, quality becomes a dominant factor of success in every sector of the economy and this includes quality in the provision of education. Without education one will find it difficult to succeed in life and cannot face the challenges of the new millennium.

Quality education is a continuous and conscious process aiming at academic excellence. It can be ensured through quality assessment that the institution is doing what it claims to have been doing. It is pertinent that an institution evolves internal processes for self-analysis and assessment enabling self monitoring for quality improvement. Such processes keep the institution alert to the emerging role in the fast changing environment.

Manav Bharti University, Solan is fully conscious about its role in the nurturing and growth of technical education in this part of the country. The whole credit goes to the Chairman and his dedicated team efforts.



# About Us

Manav Bharti University (MBU) has been established under the aegis of Manav Bharti Charitable Trust (Regd.) with the realization that social transformation can occur through the spread of high quality education. The Trust aims to advance and disseminate knowledge and maintain highest standard of education through teaching, research, extension education programme and conceptual aspects relevant to the need of the rural masses.

The University was established by Act No. 22 of 2009 of State Legislature of Himachal Pradesh as a State Private University and notified under section 2(f) and empowered to award degrees as per section 22 of the UGC Act, 1956.

Since then it has aimed at pursuing excellence in teaching and research in Engineering & Technology, Computers, Management, Commerce, Pharmacy, Arts and Law. Today, Manav Bharti University is offering

outstanding education to students from throughout India by providing a learning experience designed to develop intellectual abilities, as well as social, moral and ethical values.

The University is equipping its students with the skills, insights, attitudes & practical experience that will enable them to become outstanding citizens.

The University gives attention for excellence in research and teaching and is committed to attracting and supporting the best students and recruiting faculty who excel at teaching and research.

## **LOCATION :**

Located in rural backdrop of Himachal Pradesh, MBU is equidistant (65 km) from both Chandigarh and Shimla, 35 km from Kalka Railway Station, 5 km from NH 22 on Kumarhatti- Sultanpur Road at Laddo in District Solan.

Serene and lush green picturesque surroundings makes the campus truly environment friendly, eloquent and unique hustle free knowledge centre. Being hilly and rural area, the environment is free from any type of pollution and conducive to study & research. The area is beautiful in all respect. The atmosphere in this region is normal i.e. neither so much cold nor hot.

The campus is situated in scenic beauty of Shivalik Hills at times which are covered with snow. The environment is best suited not only for education but for the overall development of the candidate.





# Infrastructure

## Academic Blocks

MBU has large and spacious Academic Blocks with fully furnished class rooms having ample seating capacity, state of the art equipments with multimedia and other audio visual electronic gadgets and teaching aids. The blocks comprises of class-rooms, laboratories, lecture halls and seminar halls with sound amplifying systems. Five large academic blocks, Central Library, Administrative Block comprising of 6 storeys each and 4 storeys workshop (for engineering courses).

## Library

The University has 6 storeys Central Library (3500 sq. mtr.) which is one of the largest libraries in Himachal Pradesh. The library is well ventilated and well illuminated. The library has 30000 books that covers all the faculties being taught in MBU. The University subscribes to various National and International Journals of repute. The e-library has on access for reference to latest publications of the research journals / material and information through 100 computers all connected through LAN.

## Summer Training & Projects

We at MBU give our students live projects in the form of business analysis, making new business plan, conducting surveys and encouraging them to take up new entrepreneurial activities during their study and training period in the University in order to get 'hand on' experiences of the business world.

## Auditorium

The University has an eye catching auditorium with sitting capacity of about 500 people. It is equipped with high end projection facility, Public Address Sound System etc. for organizing conferences, symposiums, workshops, seminars & other rigorous academic and cultural activities.

## Cafeteria

There is a very nice and quite spacious separate cafeteria in the premises for students and staff.

Students through the cafeteria and help themselves to a variety of tasty foods which of course comes at a very nominal rates.

The quality of edible items is checked regularly.





## Hostel

We understand that most of our students are moving out from their home for the first time, so we strive to make the transition as smooth as possible by offering comfortable and safe hostels within the campus. The University Campus provides a comfortable hostels for the students (Boys & Girls) each having space to accommodate more than 800 students.

Hostels have been designed to accommodate students as per their choice in a single bedded cubicle room, double bedded and triple bedded rooms. Each room has been provided with an almirah, table, chair and a cot. Water heaters, Water Coolers and Water Purifier are provided in the hostels. University hostels have a common room facility for TV viewing and indoor games facility and a dining hall having ample space.

The University has a cafeteria to accommodate 200 people at a time for breakfast, lunch, dinner, etc. with separate arrangement for teachers, staff, students and visitors. The University provides a pollution free environment to the students.

## Bank

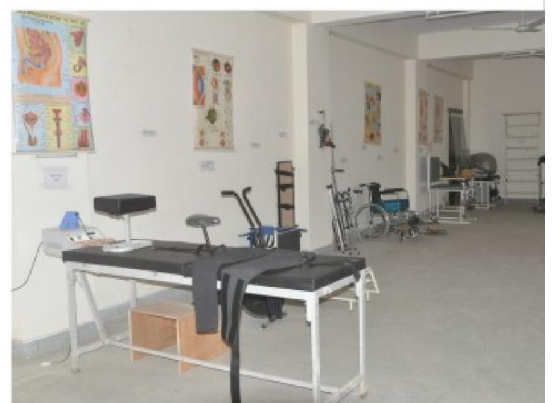
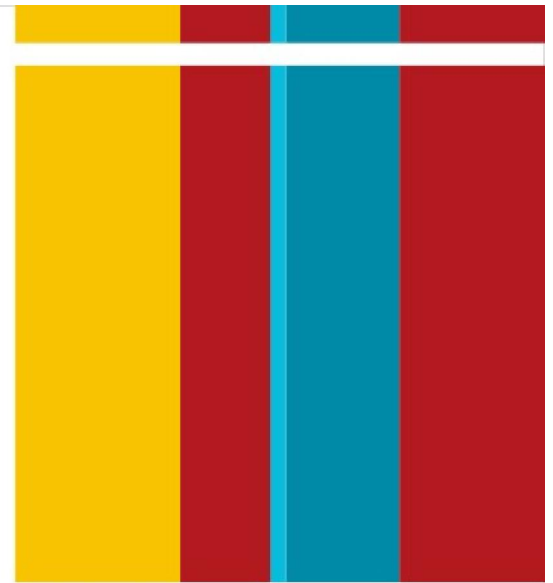
A proposal for opening a branch of a Nationalized Bank and a 24 hour ATM has been installed and is under active consideration of the Governing Board of the Bank. It is expected an ATM is likely to be installed in the University Campus during this session.

## Campus Clinic

The University campus clinic has doctors, nurses, councilors and psychologists. Round the clock health care assistance is available for students, staff and faculty. MBU campus has one fully equipped ambulance to facilitate swift medical service in case of emergency.

## Sports Facility

It is our constant endeavor to see the students grow intellectually and physically. To facilitate these sports grounds for Volley Ball, Basket Ball, Lawn Tennis Court, Badminton Courts, Table Tennis Courts etc. are provided. Efforts are on to develop grounds for playing games like hockey and football.



# Faculty of Engineering & Technology



Prof. Ramesh Nain

## Department of Engineering & Technology

Manav Bharti University (MBU) offers B. Tech program in Civil, Mechanical, Computer Science, Electronics & Communications and Electrical Engineering. The aim of faculty of Engineering & Technology is to provide modern technical education & conducive learning environment to develop the skilled manpower for the industry. The emphasis is given on the development of employability skill and overall personality development to the students of hilly areas so that students may get better placements in the fast changing scenario of the global economy.

Name of the Courses	Intake	Duration
B.Tech. (CSE, ECE, EE, ME, Civil)	60 each	4 Years/8 Sem.

### Eligibility

B.Tech. - 10+2 with Physics, Chemistry & Mathematics (45% GEN. & 40% SC/ST)

For Lateral Entry - Diploma in Engineering from recognised Board/University (45% GEN. & 40% SC/ST)

### Admission Procedure

Manav Bharti University adopts merit based, transparent and uniform cross comparable admission process. The candidates will be enrolled through Merit/Entrance Test. Test score of all National or State Level Entrance Tests i.e. JEE Main will be preferred.

## Department of Computer Applications

Computer Applications courses are a route for the Arts and Commerce students of 10+2 to join the band of computer professionals. The field relates to design, development and use of computer applications. Application implies amalgamation of operating system, a utility, and a programming language. Thus, MCA/BCA graduates are able to develop and prepare documents, projects, presentations, design websites and demonstrate skills in running software programs.

Name of the Courses	Intake	Duration
Master of Computer Applications (MCA)	60	3 Years/6 Sem.
Bachelor of Computer Applications (BCA)	60	3 Years/6 Sem.

### Eligibility

MCA - 10+2 (Maths)+Graduation (50% GEN. & 45% SC/ST)

For Lateral Entry – PG Diploma in Computer Applications (45% GEN. & 40% SC/ST)

BCA - 10+2 in any stream (45% GEN. & 40% SC/ST)

### Admission Procedure

Manav Bharti University adopts merit based, transparent and uniform cross comparable admission process. The candidates will be enrolled through Merit/Entrance Test.





**Prof. J S Verma**

# Faculty of Arts & Languages

## Department of Arts

The objective of the faculty is to provide students with an outstanding education in this field as well as a broad understanding of selected fields of study outside these areas. The degrees are designed so that a student should be able to understand the selected fields of study and qualify for employment in a wide range of occupations.

Name of the Courses	Intake	Duration
B.A.*	60	3 Years
M.A. English	60	2 Years
M.A. Education	60	2 Years

\*A candidate shall be required to take English as Compulsory Subject (to be studied in all three years i.e. B.A. Part I, II, III), Hindi as qualifying subject in Part II and Environment as qualifying paper in Part III and two of the following Elective subjects (to be studied in all three years)

**History**

**Mathematics**

**Political Science**

**Public Administration**

**Economics**

**Sociology**

### Eligibility

B.A. - 10+2 (Pass) with English

M.A. English - Graduation with 2<sup>nd</sup> division or with 45% marks in the subject or B.A. (Hons) in English

M.A. Education - Graduation with 2<sup>nd</sup> division or with 45% marks in the subject or B.A. (Hons.) in Education

### Admission Procedure

Manav Bharti University adopts merit based, transparent and uniform cross comparable admission process.

## Department of Education

Education is a pious profession. Manav Bharti University (MBU) offers this course for preparing faculty for the up-lifment of students living in Rural Backdrop of Himachal Pradesh. This programme is multi-disciplinary, technological in character and are designed to meet the requirements of newly emerging faculty activities. Students will have an exhaustive exposure to usage of modern technologies in teaching.

Name of the Courses	Intake	Duration
D.El.Ed (JBT)	100	2 Years/4 Sem.

Approved by National Council of Teacher Education (NCTE).

### Eligibility

D.El.Ed (JBT) - 10+2 (Pass)

### Admission Procedure

Manav Bharti University adopts merit based, transparent and uniform cross comparable admission process.

# Faculty of Law



Dr. Akhilesh Ranaut

## Department of Law

The aim of the Department of Law in Manav Bharti University (MBU) is to promote excellence in teaching, learning and research in Law. The Department will be a centre for pioneering interdisciplinary and comparative legal research and for our unique approach towards education, combining professionalism with a personal and friendly ethos. We seek to provide a stimulating and diverse learning environment within which students can pursue their studies in Law.

The courses (BA-LLB & LLB) are approved by Bar Council of India (BCI).

Name of the Courses	Intake	Duration
BA-LLB	120	5 Years/10 Sem.
LLB	300	3 Years/6 Sem.
LLM	40	1 Year/2 Sem.

## Eligibility

BA-LLB - 10+2 in any stream (45% GEN. & 40% SC/ST)

LLB - Graduation in any stream (45% GEN. & 40% SC/ST)

LLM - LLB (50% GEN. & 45% SC/ST)

## Admission Procedure

Manav Bharti University adopts merit based, transparent admission process. The candidates will be enrolled through Merit/Entrance Test. The CLAT scorers will be preferred.







**Prof. Rakesh Kumar**

# Faculty of Commerce & Management

## Department of Management

Manav Bharti University (MBU) offers various courses with multiple specializations related to Commerce & Management field. These programmes are multi-disciplinary, technological in character and are designed to meet the requirements of newly emerging professional activities. Students will have an exhaustive exposure to modern technologies.

Name of the Courses	Intake	Duration
Master of Business Administration (MBA)	60	2 Years/4 Sem.
Bachelor of Business Administration (BBA)	60	3 Years/6 Sem.

### Eligibility

MBA-Graduation in any stream (50% GEN. & 45% SC/ST)

BBA-10+2 in any stream (45% GEN. & 40% SC/ST)

## Department of Commerce

Name of the Courses	Intake	Duration
Master of Commerce (M.Com.)	30	2 Years
Bachelor of Commerce (B.Com.)	60	3 Years

### Eligibility

M.Com. -B.Com./B.Com. (Hons.) or Graduation in Business Administration/Commerce with 50% marks

or M.A./M.Sc. in Economics/Statistics/Mathematics with 50% marks

or B.A./B.Sc. with Economics/Statistics/Mathematics with 50% marks in Economics/Statistics/Mathematics and 50% marks in aggregate

B.Com. -10+2 in any stream (45% GEN. & 40% SC/ST)

### Admission Procedure

Manav Bharti University adopts merit based, transparent and uniform cross comparable admission process. The candidates will be enrolled through Merit/Entrance Test. For MBA course the Test score of all National or State Level Entrance Tests i.e. C-MAT, CAT, MAT etc. will be preferred.

First they ignore you, then laugh at you,  
then they fight you, then you win.

*Mahatma Gandhi*

(2 October 1869 – 30 January 1948)



# Faculty of Pharmaceutical Sciences



**Prof. Bharat Prashar**

## Department of Pharmacy

Department of Pharmacy has been designed as the centre of excellence for Pharmaceutical Sciences in India. Pharmacy is the science and art of medicine and healthcare. Pharmacists are experts on drug therapies, who optimize medication to provide patients with positive health outcomes. A Diploma/Bachelor of Pharmacy is an undergraduate academic degree in the field of Pharmacy. This is the basic prerequisite for registration to practice as a pharmacist in India and abroad.

The D. Pharm. & B. Pharm. (Allopathy) courses have been approved by the Pharmacy Council of India (PCI).

Name of the Courses	Intake	Duration
D. Pharmacy (Allopathy)	60	2 Years/4 Sem.
B. Pharmacy (Allopathy)	60	4 Years/8 Sem.

## Eligibility

D. Pharmacy (Allopathy) - 10+2 in Science stream (Pass)

B. Pharmacy (Allopathy) - 10+2 in Science stream (Pass)

\*Lateral Entry to B. Pharm. course as per norms.

## Admission Procedure

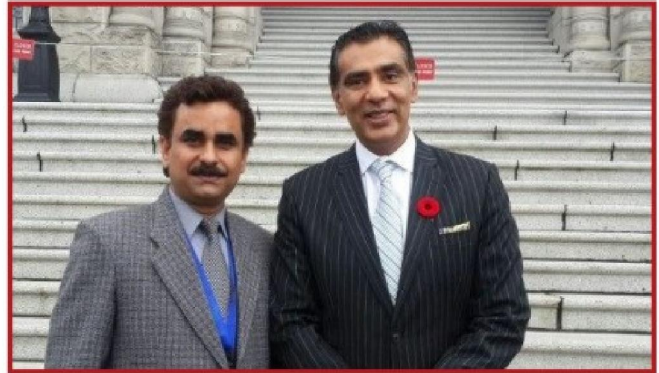
Manav Bharti University adopts merit based, transparent and uniform cross comparable admission process. The candidates will be enrolled through Merit/Entrance Test. The Test score of all National or State Level Entrance Tests will be preferred.







## International Tie-ups



### International Relations & Tie-ups

International activities include exploring the International Academic/ Scientific research, collaboration and cooperation in foreign integration of educational staff and students. It also provides integrated services and facilities to the international students/candidates seeking admission in the University. The services include free counseling, carrier guidance, pre-arrival information, visa and immigration support, meeting at the airport and campus transfer etc. The main objectives of collaboration of the MBU with National and International educational Institutions/Universities are to develop academic, scientific and technological cooperation through various specified projects in different areas by establishing interaction and mutual understanding and sharing new technology and methods of management on scholarly and scientific basis through extension on other programs developing mutual linguistic enhancement programs, exchange of programs, faculties and student /scholars and encouraging possible methods for the development of global academic environment and cultural diversity in campus.



Manav Bharti University has signed Memorandum of Association with Sprott Shaw College & Associate School of Management, Vancouver, British Columbia, Canada. Under this agreement the candidate has the option to pursue his/her part study in Manav Bharti University & Part education at Canada. This option is presently available in Bachelor of Business Administration (BBA) course.

For more details please contact our Department of International Affairs.







## Important Instructions

### List of documents to be submitted with the admission form

- (a) DMCs/Certificates of last qualifying examination passed;
- (b) Matriculation or equivalent examination certificate, in support of date of birth;
- (c) Character Certificate:
  - (i) Regular Candidate: The candidate who passed his/her qualifying exam. from College/Department as regular student is required to submit the Character Certificate from the Principal concerned.
  - (ii) Private Candidate: Candidate who has passed the qualifying examination, as private candidate should submit his/her Character Certificate duly signed by a First Class Magistrate.
  - (iii) Distance Education Candidate: The candidate who has passed his/her qualifying examination through Distance Education is required to submit his/her Character Certificate from the Director, Distance Education of the concerned University.
  - (iv) Gap in Study: Candidate, who has gap in his/her academic career after the Qualifying Examination, must furnish a gap certificate, in the form of affidavit on non-judicial stamp paper or certificate from the employer (if in service) and should also furnish separately a Character Certificate of gap period duly attested by Notary Public.
- (d) Residence Certificate (if applicable): Candidate, who has passed his/her qualifying examination from the Universities in the State of Himachal Pradesh will be deemed to be Himachal residents and will not be required to submit certificate of bonafide resident of Himachal Pradesh.
- (e) Certificate in case of candidate belonging to SC/ST/OBC/Physically Handicapped/Ex- Serviceman/Freedom Fighter etc., if applicable.
- (f) Migration Certificate (original) from the University/Board of last qualifying examination.
- (g) Six coloured passport size photographs, all original and one set of attested photocopies of all applicable documents testimonials/certificates must be brought at the time of counseling/admission.
- (h) Original certificates will be returned after verification and completion of formalities. In exceptional cases all original certificates may be retained and will be returned later on.
- (i) **Candidate has to submit a self-declaratory affidavit for anti ragging, non-employment, pursuing single degree at one university, genuineness of attached certificates (format enclosed).**

### Rules for Adjustment/Refund of Fee

1. If a candidate after having deposited fee for admission in one course joins another course in the University on getting proper permission will be allowed adjustment of fee. However, difference if any will be paid by the candidates.
2. In case a candidate leaves the University after seeking admission in a particular course, following conditions will apply for refund of fee:
  - a. If a candidate leaves before the commencement of the classes, the entire fee deposited by the candidate will be refunded after deducting Rs. 1 000/- only.
  - b. In case a candidate leaves after commencement of the classes, proportionate deduction of fee upto the month of his/her leaving will be made, subject to minimum of Rs. 1000/-. However, refund will be allowed only if the seat so vacated is filled by the last date of admission.

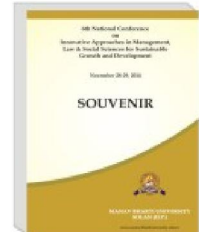
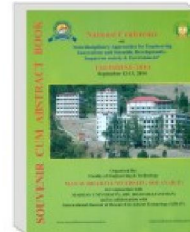
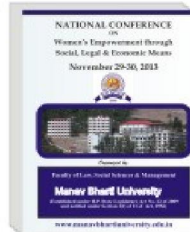
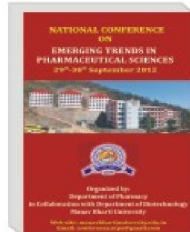
### Curbing the Menace of Ragging

Ragging is totally prohibited in the University and anyone found guilty of ragging and/or abetting ragging, whether actively or passively, or being a part of a conspiracy to promote ragging, is liable to be punished in accordance with the UGC Regulations on Curbing the Menace of Ragging in Higher Educational Institutions, 2009 as well as under the penal law for the time being in force.

Authority	Contact Numbers	E-mail
UGC Anti Ragging	1800 180 5522 (Toll Free)	helpline@antiragging.net
Vice Chancellor	01792-268385	vc@manavbhartiuniversity.edu.in
Registrar	01792-268386	info@manavbhartiuniversity.edu.in



# Life@



Shape your career



**UNIVERSITY CAMPUS:**

Laddo, Kumarhatti, Solan, H. P.-173 229

**CONTACT NUMBERS :**

**Phone :** 01792-268385, 268386

**Fax :** 01792-268279, 268280

**Mobile :** 9311037788, 8091100003, 9625300003,  
082650-10053, 54, 55

**E-MAIL**

[info@manavbhartiuniversity.edu.in](mailto:info@manavbhartiuniversity.edu.in)

**WEBSITE :**

[www.manavbhartiuniversity.edu.in](http://www.manavbhartiuniversity.edu.in)



[www.facebook.com/manav0bhartiuniversity](https://www.facebook.com/manav0bhartiuniversity)