

B.Ed Entrance Test – 2014 QUESTION BOOKLET

INSTRUCTIONS

Maximum Time Allowed : 2 Hours
Negative Marking : 0.2

No. of Questions: 120
Maximum Marks: 120

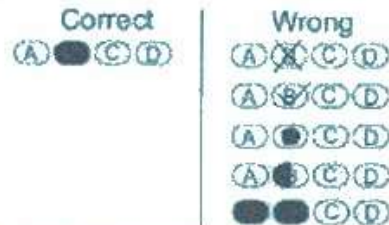
Roll Number:

Answer Sheet Number:

Please read the following instructions carefully:

- 1) **Check the booklet thoroughly:** In case of any defect – Misprint, Missing question(s) or duplication of question(s) / Page(s), get the booklet changed with the booklet of the same series from the Room Invigilator. No complaint shall be entertained after the entrance test.
- 2) Write your Roll Number and the OMR Answer Sheet Number on the question booklet.
- 3) Mark carefully your Roll Number, Question Booklet Number and Question Booklets series on OMR Answer sheet and sign at the appropriate place. Incomplete and/or incorrect particulars will result in the non-evaluation of your answer sheet.
- 4) Strictly follow the instructions given by the Centre Supervisor / Room Invigilator and those given on the Question Booklet.
- 5) Candidates are not allowed to carry any papers, notes, books, calculators, cellular phones, scanning devices, pagers etc. to the Examination Hall. Any candidate found using, or in possession of such unauthorized material, indulging in copying or impersonation or adopting unfair means / reporting late / without Admit Card will be debarred from the written test.
- 6) Please mark the right responses on the OMR Sheet with ONLY a Blue/Black ball point pen. Use of eraser, whitener (fluid) and cutting on the OMR Answer Sheet is NOT allowed.
- 7) The test is of objective type containing multiple choice questions (MCQs). Each objective question is followed by four responses. Your task is to choose the correct/best response and mark your response on the OMR Answer Sheet and NOT on the Question Booklet.
- 8) There will be 0.2 negative marking for every wrong answer.

9) For marking response to a question, completely darken the CIRCLE so that the alphabet inside the CIRCLE is not visible. Darken only ONE circle for each question. If you darken more than one circle, it will be treated as wrong answer. The CORRECT and the WRONG methods of darkening the CIRCLE on the OMR Answer Sheet are shown below.



10) Please be careful while marking the response to questions. The response once marked cannot be changed and if done shall be treated as wrong answer.

11) In view of the tight time span, do NOT waste your time on a question which you find to be difficult. Attempt easier questions first and come back to the difficult questions later during the test.

12) DO NOT make any stray marks anywhere on the OMR Answer Sheet. DO NOT fold or wrinkle the OMR answer sheet.

13) Rough work MUST NOT be done on the OMR Answer Sheet. Use your test booklet for this purpose.

14) Candidates are provided carbonless OMR Answer Sheet having original copy and candidate's copy. After completing the examination, candidates are directed to fold at perforation on the top of the sheet, tear it to separate original copy and candidate's copy and then hand over the original copy of OMR Answer Sheet to the Room Invigilator and take candidate's copy with them.

Section 1: Pedagogy

1. How many common processes and factors are identified as barriers in problem solving strategy?
 - (A) 10
 - (B) 6
 - (C) 4
 - (D) 5
2. Who is the father of genetic epistemology?
 - (A) Piaget
 - (B) Bruner
 - (C) Vygotsky
 - (D) Dewey
9. According to the Dictionary of Education, "Objective" means-
 - (A) The desired goal of improving speaking skills
 - (B) The beginning towards which a student's behavior changes
 - (C) The end towards which a school sponsored activity is directed
 - (D) The outcome of improving text level knowledge
10. What kind of enrichment program has to be provided by the teacher to advance learning?
 - (A) Projects

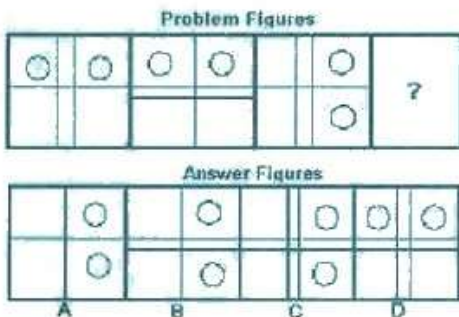
3. To compliment teaching, stimulation discussion or allow out-of-class teaching, which visual aid tool is useful?
 (A) Black-board
 (B) PowerPoint
 (C) Games
 (D) Blogs
4. The differences among individuals that distinguish them from one another and make each one a unique individual are denoted by the term
 (A) Individual difference
 (B) Heredity
 (C) Environment
 (D) Personality
5. Students learning styles depend on their prevailing type of
 (A) Habits
 (B) Body language
 (C) Intelligence
 (D) Cultural differences
6. Problem solving is an important component of
 (A) Geographical education
 (B) Science education
 (C) Mathematics education
 (D) Historical education
7. Demonstration is a process of teaching through
 (A) Visualizing an object
 (B) Examples or experiments
 (C) Spoken explanations
 (D) Talking with each other
8. What in English requires a lot of rote learning?
 (A) Sentence formation
 (B) Paragraph writing
 (C) Verb formation
 (D) Word formation
16. In a classroom, pupil's source of information is the
 (A) Student
 (B) Book
 (C) Teacher
 (D) Teaching aid
17. A free online gathering place where students can come online to ask, answer and explore under the guidance of their instructor is called as
 (A) Twitter
 (B) Blog
 (C) Piazza
 (D) Wikis
18. A systematic pedagogical strategy that encourages small groups of students to work together for the achievement of a common goal is
 (A) Cooperative learning
 (B) Distance learning
 (C) Integrating technology
 (D) Case method
19. A language teaching method developed by Stephan Krashen and Tracy D Terrel is called
 (A) Suggestopedia
 (B) Silent way
 (C) Nature approach
 (B) Team work
 (C) Revisions
 (D) Remedial instructions
11. A teacher meeting his students for the first time should start
 (A) Teaching without caring the students likes and dislikes
 (B) Develop rapport with the class
 (C) Give a broad outline of the whole subject
 (D) Both B and C
12. A teacher provides multi-sensory prompts to elicit correct responses from what kind of learners?
 (A) Slow learners
 (B) Advance learners
 (C) Moderate learners
 (D) Average learners
13. The Structural Approach Method sees language as a
 (A) Complex or grammatical rule which is to be learned on time
 (B) Similarity between first and second language
 (C) Computer analysis, which identifies most common words
 (D) Building of strong personal link between teacher and student
14. Assigning a disorderly sentences or the classroom rules to write repeatedly is known as
 (A) Corporal punishment
 (B) Rote discipline
 (C) Moral discipline
 (D) Oral punishment
15. What does the Humanistic Approach use, as one of the means of retaining new knowledge?
 (A) The needs of students
 (B) The rules of teaching
 (C) The way he is comfortable
 (D) The subject he is teaching
24. Learners who involve the sense of touch in learning and like to do artwork are
 (A) Kinesthetic learners
 (B) Auditory learners
 (C) Visual learners
 (D) Global learners
25. The main two objectives of teaching English are, language development and -
 (A) Innovative techniques
 (B) Literary development
 (C) Teaching methods
 (D) Understanding English
26. Which is the most widely used instructional strategy in classrooms?
 (A) Lecture method
 (B) Discussion method
 (C) Collaborative method
 (D) Black board method
27. All of the following are the characteristic features of an effective teacher EXCEPT
 (A) Emphasis upon standard
 (B) Emphasizing group discussion for the purpose of clarifying the objectives
 (C) Emphasis upon the quick control of the

- (D) Lecture method
20. Semantic is related to -
 (A) Thinking
 (B) Spelling
 (C) Understanding
 (D) Reading
21. To enable to speak English means -
 (A) Producing sounds with mother tongue influence
 (B) Producing sounds with proper stress and intonation
 (C) Reading as enthusiastic readers
 (D) To enable writing letters and application
22. The process of getting your students to say it instead of you is known as
 (A) Repetition
 (B) Elicitation
 (C) Felicitation
 (D) Precipitation
23. Effective tangible changes in students behavior at the end of schooling is known as -
 (A) Objective
 (B) Instruction
 (C) Tactics
 (D) Improvement

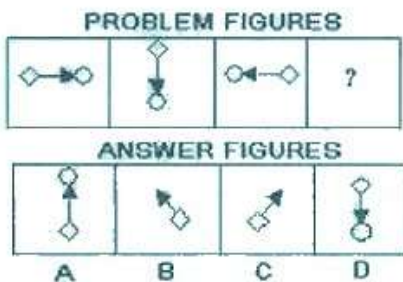
- problematic situation
- (D) Differential treatment meted out to students of his class
28. Who said "Education means the bringing out of the ideas of universal validity which are latent in the mind of every man"?
 (A) Plato
 (B) Socrates
 (C) Aristotle
 (D) John Dewey
29. What is useful for improving the learner's knowledge or vocabulary, grammar and language skills?
 (A) Non verbal communication
 (B) Language games
 (C) E-Learning
 (D) Drawing diagrams
30. In which year the Indian Education Commission introduced work-experience in the curriculum?
 (A) 1964 - 1966
 (B) 1960 - 1962
 (C) 1958 - 1960
 (D) 1963 - 1964

Section 2 : Analytical Ability

31. Choose the missing figure of the Problem Figure from the Answer Figure.



- (A) A
 (B) B
 (C) C
 (D) D
32. Which one of the option completes the series?



- (A) A
 (B) B
 (C) C
 (D) D

33. Below mentioned are 4 set statements and conclusions, these sets are named as I, II, III and IV. Each of the set has 2 statements named Statement 1 and Statement 2 followed by a conclusion. You have to take the given statements of all sets to be TRUE even if they seem to be at variance from the commonly known facts. Read the conclusions and then decide which of the given conclusions logically follows from the given statement.

- I. Statement 1: Dinosaurs are pre-historic creatures. Statement 2: Water buffaloes are not dinosaurs. Conclusion: Water buffaloes are not pre historic creatures.
- II. Statement 1: All politicians are frank. Statement 2: No frank people are crocodiles. Conclusion: No crocodiles are politicians.
- III. Statement 1: No diamond is quartz. Statement 2: No opal is quartz. Conclusion: Diamonds are opals.
- IV. Statement 1: All monkeys like bananas. Statement 2: Some GI Joes like bananas. Conclusion: Some GI Joes are monkeys.

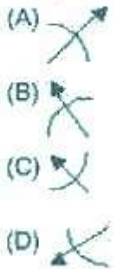
Which one of the statement is correct?

- (A) III only
 (B) II only
 (C) I and IV
 (D) II and III
34. Find the odd one out from the options provided.

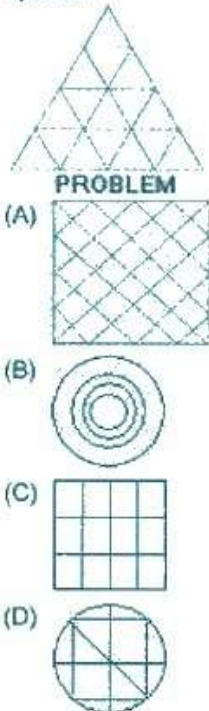


35. If in a certain language CHAMPION is coded as HCMAIPNO, then NEGATIVE will be coded as:
 (A) ENAGITEV
 (B) NEAGVEIT
 (C) MGAETVIE
 (D) EGAITEVN

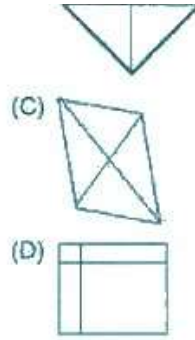
36. Find the odd one out from the options provided.



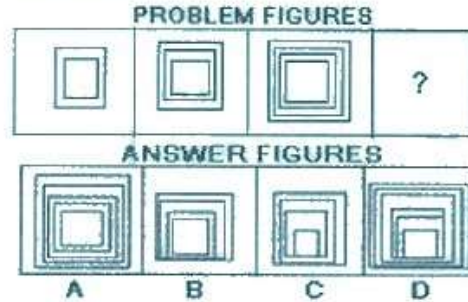
37. Identify the similar pattern of the figure from the given options:



38. There are five brothers - A, B, C, D and E, not necessarily in the same order. They have among them a pair of twins who are neither the oldest nor the youngest. E is older than C but younger than B. D is younger than three brothers. Based on this information answer the below question:
 One of the twin is:
 (A) D
 (B) B
 (C) C
 (D) E

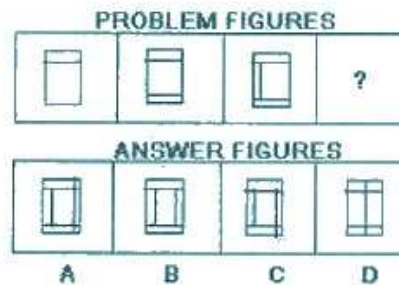


39. Choose the missing figure of the Problem Figure from the Answer Figure.



- (A) A
 (B) B
 (C) C
 (D) D

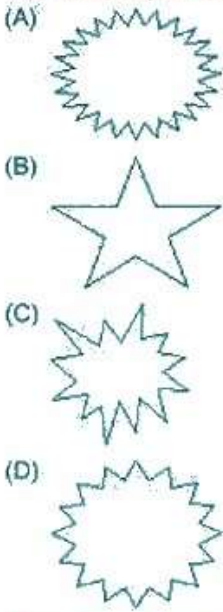
40. Which one of the option completes the series?



- (A) A
 (B) B
 (C) C
 (D) D

41. P is the son of Q; Q and R are sisters; S is the mother of R and T is the son of S. Which of the following statements is true?
 (A) P and T are cousins
 (B) T is the maternal uncle of P
 (C) R is the maternal grandfather of P
 (D) Q and T are sisters

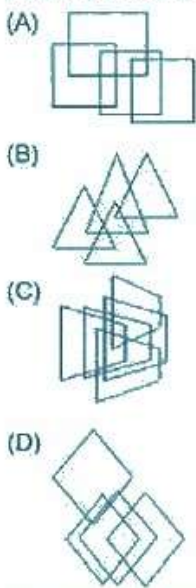
42. Find the odd one out from the options provided.



43. A introduces B as, "She is the sister of the son of my sister's husband". How are A and B related?

- (A) Mother-daughter
- (B) Aunt-niece
- (C) Sisters-in-law
- (D) Mother-in-law and daughter-in-law

44. Find the odd one out from the options provided.



45. If * means +, / means -, - means * and + means /, then $8 * 7 - 8 + 40 / 2 = ?$

- (A) 1
- (B) $37/5$
- (C) $33/5$
- (D) 44

49. In a city, people read the papers A, B and C. Given that the people read at least one of the three papers, find out the number of people who read only papers B and C by considering the following data:

60% of the people read A

45% of the people read B

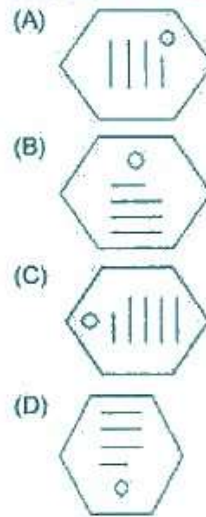
40% of the people read C.

People who read both papers A and B is 10%.

People who read both the papers A and C is 20%.

- (A) 45%
- (B) 35%
- (C) 25%

46. Find the odd one out from the options provided.



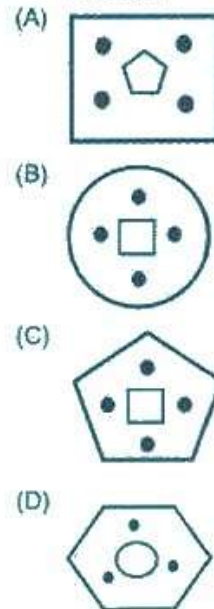
47. If in a certain language, ENTRY is coded as 12345 and STEADY is coded as 931785, then ARREST is coded as:

- (A) 744589
- (B) 744193
- (C) 166479
- (D) 745194

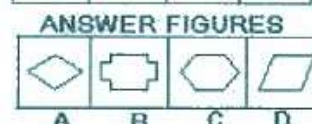
48. Identify the similar pattern of the figure from the given options:



Problem



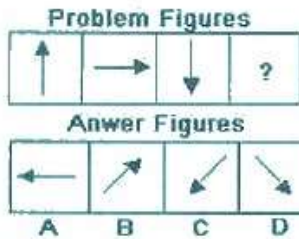
52. Choose the missing figure of the Problem Figure from the Answer Figure.



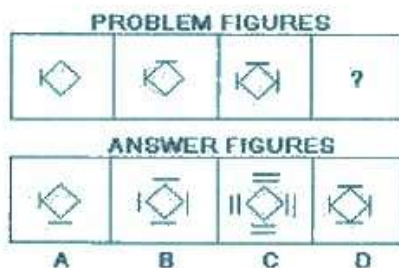
- (A) A
- (B) B

(D) 15%

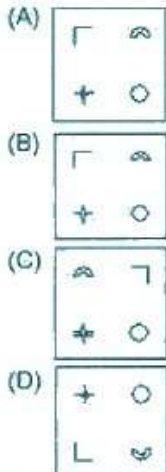
50. Choose the missing figure of the Problem Figure from the Answer Figure.



- (A) A
 (B) B
 (C) C
 (D) D
51. Which one of the option completes the series?



- (A) A
 (B) B
 (C) C
 (D) D
55. Find the odd one out from the options provided.



56. Below mentioned are 4 set statements and conclusions, these sets are named as I, II, III and IV. Each of the set has 2 statements named Statement 1 and Statement 2 followed by a conclusion. You have to take the given statements of all sets to be TRUE even if they seem to be at variance from the commonly known facts. Read the conclusions and then decide which of the given conclusions logically follows from the given statement.

I. Statement 1: A few farmers are rocket scientists.
 Statement 2: Some rocket scientists catch snakes.
 Conclusion: A few farmers catch snakes.

II. Statement 1: P is a kangaroo. Statement 2: Some kangaroos are made of teak. Conclusion: P is made of teak.

(C) C
 (D) D

53. Read the Scenario and the related conditions carefully to answer the question that follows:

Scenario: Two pots need to be painted with three of the six colours (Pink, Blue, Yellow, Orange, Green and Red), as per the following conditions:

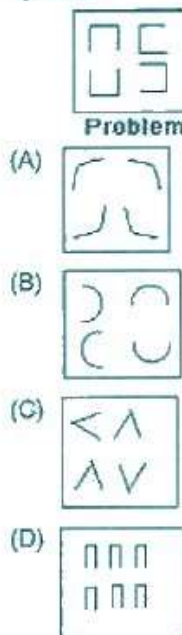
- Condition 1: If Pink is used, then yellow must be used on the same pot.
 Condition 2: Blue and orange cannot be used on the same pot.
 Condition 3: The two pots cannot have the same combination of colours.

Which of the following is an acceptable way to paint the pots, when Pink is NOT used?

- (A) Pot 1 - Pink, blue, yellow; Pot 2 - Pink, yellow, orange.
 (B) Pot 1 - Pink, green, red; Pot 2 - Green, yellow, orange.
 (C) Pot 1 - Pink, yellow, orange; Pot 2 - Pink, blue, orange.
 (D) Pot 1 - Blue, green, red; Pot 2 - Blue, orange, red.

54. What is 5% of 8% of 40?
 (A) 1.6
 (B) 0.08
 (C) 0.016
 (D) 0.16

57. Identify the similar pattern of the figure from the given options:



58. An automobile passes City X at 9:55 AM and City Y at 10:15 AM. City X is 30 miles from City Y. What is the average speed of the automobile, in miles per hour?
 (A) 10
 (B) 30
 (C) 90
 (D) 120

III. Statement 1: No bulls eat grass. Statement 2: All matadors eat grass. Conclusion: No matador is a bull.

IV. Statement 1: Some skunks drive Pajeros. Statement 2: All skunks are polar bears. Conclusion: Some polar bears drive Pajeros.

Which of these has the third conclusion TRUE?

- (A) Only II
- (B) I and III
- (C) Only III
- (D) III and IV

59. Which was the most preferred product among the customers?
- (A) A
 - (B) B
 - (C) C
 - (D) D
60. How many customers used only product C?
- (A) 29
 - (B) 52
 - (C) 85
 - (D) 96

Directions for Questions 59 and 60.

Read the below instruction and answer the questions that follow:

A survey was conducted in a departmental store to check consumers' preferences for 3 products A, B and C. When 274 customers who used at least one of the three products were analyzed, it was found that

- 22 customers used all the three products
- 98 used only A
- 39 used B and C
- 48 used only B
- 14 used only A and C, and
- 157 customers used product A.

Section 3 : Verbal Ability

61. Select the right option for underlined phrase:
My music system is new, but unlike yours, I don't keep it dirty.
- (A) but unlike your, it's not dirty
 - (B) but unlike your, I don't keep it dirty
 - (C) but unlike yours, it's not dirty
 - (D) but unlike yours, I will not keep it dirty
62. In the following question, find out which one of the words given below the sentence is most appropriate in meaning for the underlined word in the sentence:
'My Experiment with Truth' is the account of the life and experiences of Gandhi.
- (A) nostalgia
 - (B) memoir
 - (C) tale
 - (D) dossier
63. Choose the right option to correct the sentence:
Google started its operations in India from May 2004.
- (A) Change "from" to "since"
 - (B) Change "from" to "through"
 - (C) Change "from" to "on"
 - (D) Change "from" to "for"
64. Choose the correct verb/verbs:
The Army _____ working to ensure that the area _____ free from infiltrators.
- (A) were, has been
 - (B) was, was
 - (C) was, has been
 - (D) were, was
65. Provide the antonym of the word underlined:
We had a delectable meal yesterday.
- (A) Nice
67. Identify the appropriate meaning for the idiom / proverb underlined in the sentence below:
From his attitude it is clear that he wants to pay off old scores.
- (A) Pay the money
 - (B) Have his revenge
 - (C) Collect his money
 - (D) Forget all his past
68. Choose the appropriate proverb that describes the quality mentioned in the statement.
He is so simple and shy, no one can assess how knowledgeable he is.
- (A) Manners maketh man
 - (B) Still waters run deep
 - (C) Every cloud has a silver lining
 - (D) Virtue is its own reward
69. Arrange the below sentences in the right order:
- P) Expect others to treat them well
 - Q) Those who cannot treat
 - R) Should not
 - S) Others well
- (A) QSRP
 - (B) SRPQ
 - (C) RPQS
 - (D) QPRS
70. Fill up the blank with the appropriate idiom from the choices given:
Now that he is bankrupt, his friends may _____ him.
- (A) make a clean breast of
 - (B) hammer away at

- (B) Tasty
(C) Unsavory
(D) Heavy
66. Choose the correct verb/verbs:
To ensure that the convict _____ saying the truth, a lie-detector test _____ administered on him.
(A) was, had
(B) is, was
(C) was, was
(D) is, has
72. Arrange the below sentences in the right order:
a) Kayla and Kiki know many tricks.
b) They jump through hoops and walk across the water using their tails.
c) Each afternoon they perform for the audience who comes to watch them.
d) Kayla and Kiki are two dolphins in a show at the local aquarium.
(A) adbc
(B) abcd
(C) dcab
(D) cbad
73. Select the right option for underlined phrase:
No sooner had we reached the station that the train arrived.
(A) than the train arrived
(B) that the train arrived
(C) when the train arrived
(D) and the train arrived
74. Choose the right option to correct the sentence:
Times of India is the world's leading English news paper.
(A) Add "the" before the word "Times"
(B) Add "the" in front of "English"
(C) Change "the" to "a"
(D) Delete "the"
75. Provide the synonym of the word underlined:
There can be no efficacious remedy for the unemployment problem in a country which has no ideological convictions.
(A) Single
(B) Complete
(C) Effective
(D) Sudden
76. Provide the antonym of the word underlined:
He seems to have a propensity to fight.
(A) Skepticism
(B) Penchant
(C) Aversion
(D) Proclivity
77. Provide the antonym of the word underlined:
Ambiguity of thoughts can prove disastrous.
(A) Rigidity
(B) Clarity
(C) Certainty
(D) Rationality
83. In the following question, find out which one of the words given below the sentence is most appropriate
- (C) make faces at
(D) wash their hands off
71. In the following question, find out which one of the words given below the sentence is most appropriate in meaning for the underlined word in the sentence:
The old man was so thin, pale and sickly, he could hardly walk.
(A) cadaverous
(B) deathly
(C) salubrious
(D) portly
78. Arrange the below sentences in the right order:
a) Then I met Susan Geston in 1974 while I was shooting the film Rancho Deluxe in Montana, and I thought; "Now this is interesting".
b) I don't know how it is for women or for other guys, but when I was young and in my 20s, I had a fear of marriage.
c) So I did everything in my power to resist it – the idea was frightening to me, man!
d) I thought it was a giant step towards death.
(A) bcad
(B) bdca
(C) bacd
(D) badc
79. Provide the synonym of the word underlined:
The sporadic rise in his temperature has caused us much worry.
(A) Frequent
(B) Sudden
(C) Irregular
(D) Gradual
80. Provide the synonym of the word underlined:
Kim has no recollection of her childhood.
(A) Explanation
(B) Remembrance
(C) Impression
(D) Awareness
81. Choose the right option to correct the sentence:
Although I was trying hard and doing all homework in all sincerity yet I could not pass mathematic tests.
(A) Change "although" to "though"
(B) Change "could" to "can"
(C) Delete "yet"
(D) Change "mathematic" to "mathematics"
82. Choose the correct verb/verbs:
I _____ not attend the party as I had an assignment to complete.
(A) would
(B) could
(C) might
(D) should
86. One way in which parents can help their children is by-

words given below the sentence is most appropriate in meaning for the underlined word in the sentence:
Technological advancements improve the quality of our lives.

- (A) glorify
- (B) enrich
- (C) accelerate
- (D) hasten

84. Select the right option for underlined phrase:

There is an orange, apple and a bunch of grapes in that basket.

- (A) are an orange, apple and bunch of grapes
- (B) are an orange, an apple and a bunch of grapes
- (C) is an orange, an apple and bunch of grapes
- (D) is an orange, an apple and a bunch of grapes

85. In the following question, find out which one of the words given below the sentence is most appropriate in meaning for the underlined word in the sentence:
The mixture of the unpleasant cawing of the crows was insufferable.

- (A) cacaphony
- (B) euphony
- (C) mellifluous
- (D) discordance

Directions for Questions 86 to 88:

Please read the below passage and answer the question that follows:

Too much importance must not be attached to the wrong act of a child, especially if the offence is a minor one. Children are in a habit of stealing money, neglecting studies, taking French leave and using slangs. This is especially true for younger children. Most case studies have revealed that such behavior is the result of parents not taking proper care of the child or that the child is not given the parental attention he/ she craves for. Parents should hold themselves accountable for such behavior on the part of their children and take corrective steps. Spending quality time with the child, listening to his/her views with patience and explaining why the behavior is not acceptable would go a long way in molding the child. Punitive measures do not serve any positive purpose. If anything, they only make the child worse.

medical care for the poor and needy. Over a period of two years, the Trust has helped children with diseases such as pneumonia, shock, heart tumor, acute renal failure and cancer," say authorities. "Nearly 90% of the children have survived their illnesses. Thanks to A Foundation."

89. What was the condition of B when he was brought to the hospital?
- (A) His heart was bleeding.
 - (B) His pulse was delirious.
 - (C) His mouth and nose were bleeding.
 - (D) He was brain-dead.

- (A) Mother not working
- (B) Not spending too much money on their children
- (C) Supervising everything the child does
- (D) Spending quality time with them

87. The minor offences of children should be treated-

- (A) Through stringent punishment
- (B) Without attaching too much importance
- (C) By encouraging them
- (D) By changing their school and friends

88. 'Punitive measures' are steps taken to -

- (A) Reform the child
- (B) Spending more time with the child
- (C) Harsh punishment
- (D) Counseling sessions

Directions for Questions 89 to 90:

Please read the below passage and answer the question that follows:

A fund set up by RN at M Hospital is turning out to be a boon for several young patients. The A Foundation has contributed Rs.24 lakh over the past two years to help 70 patients at the Pediatric Intensive Care Unit of the hospital.

A 14-year-old boy who suffered a snake-bite while cutting grass around his house in rural Bangalore is the latest to benefit from A Foundation. The boy, B, was admitted to hospital almost an hour after the onset of snakebite symptoms. "He was bleeding profusely from his nose and mouth and was delirious, his heart was beating chaotically, his pulse was very weak when he arrived at the Intensive Care Unit," say hospital authorities.

B was immediately put on a ventilator, while his abnormally beating heart was corrected with electric shock treatment. He received a dose of anti-snake venom and several units of blood. He also needed dialysis for a while since the venom had damaged his kidneys as well. The treatment charges amounted to a tidy six-figure sum. With his parents earning just Rs.2000 per year, there was no way B could afford the treatment. But thanks to the N and A Foundation, his hospital bill was taken care of, say M Hospital authorities.

R, wife of ABC Co. CEO N, has pledged Rs.12 lakh per year to the A Foundation to be used for the treatment of needy patients at the Pediatric Intensive Care Unit. "The Trust has enabled the best possible

90. The charitable foundation set up to help the poor and needy patients in M hospital is
 (A) N Foundation
 (B) ABC Foundation
 (C) M Hospital Trust
 (D) A Foundation

Section 4 : General Awareness

91. Which of these dances originated in the South American countries of Argentina and Uruguay?
 (A) Waltz
 (B) Foxtrot
 (C) Salsa
 (D) Tango
92. How many member states does the United Nations have as of February 2014?
 (A) 193
 (B) 154
 (C) 79
 (D) 218
93. When was the Indian Constitution amended for the first time?
 (A) July 1951
 (B) June 1951
 (C) June 1952
 (D) January 1952
94. Who devised the 'Doctrine of Lapse' policy?
 (A) Lord Mountbatten
 (B) Lord Dalhousie
 (C) Lord Curzon
 (D) Lord Cornwallis
95. Where was 2014 Winter Olympic Games held?
 (A) Sochi, Russia
 (B) Salzburg, Austria
 (C) Pyeongchang, South Korea
 (D) Guatemala City, Guatemala
96. Which of these countries is a permanent member of the United Nations Security Council?
 (A) India
 (B) Australia
 (C) France
 (D) Brazil
97. Which of the following was discovered by Marie Curie?
 (A) Radioactive Elements
 (B) X-Rays
 (C) Logarithms
 (D) Inert Gases
98. In which of the following fields is Saraswati Samman annually given?
 (A) Journalism
 (B) Sports
 (C) Literature
 (D) Science
99. Who among the following invented Seaplane?
 (A) Evangelista Torricelli
 (B) Wright Brothers
 (C) Samuel Hahnemann
 (D) Henri Fabre
100. The Northern Lights are called Aurora Borealis. What are the Southern Lights called?
 (A) Aurora Australis
 (B) Aurora Antarcticus
 (C) Aurora Borealis
 (D) Aurora Seneca
101. In which of the following Olympics did India win a gold medal for hockey?
 (A) 1992 - Barcelona
 (B) 1988 - Seoul
 (C) 1972 - Munich
 (D) 1980 - Moscow
102. Who was awarded the Bharat Ratna along with legendary cricketer Sachin Tendulkar in early February 2014?
 (A) Pt. Bhimsen Joshi
 (B) Prof. U. R. Rao
 (C) Prof. C. N. R. Rao
 (D) Dr. A. P. J. Abdul Kalam
103. Which of the following planets in the solar system is about 93 million miles away from the sun?
 (A) Mars
 (B) Earth
 (C) Jupiter
 (D) Mercury
104. Who among the following originated the Quantum Theory?
 (A) Albert Einstein
 (B) Michael Faraday
 (C) Richard Trevithik
 (D) Max Planck
105. When was 'The Film and Television Institute of India' which was earlier known 'Film Institute of India' established?
 (A) 1950
 (B) 1965
 (C) 1960
 (D) 1955
106. Who among the following wrote the book 'A Suitable Boy'?
 (A) Vikram Seth
114. In which of the following fields B C Roy award is given?
 (A) Journalism

- (B) Salman Rushdie
(C) George Orwell
(D) T N Kaul
107. Who is the Director General of UNESCO as of February 2014?
(A) Kofi Annan
(B) Boutros Boutros Ghali
(C) Irina Bokova
(D) Rab Butler
108. In which of the following year Pulitzer Prize was established?
(A) 1917
(B) 1922
(C) 1916
(D) 1927
109. Which of the following is a novel written by Leo Tolstoy?
(A) The God of Small Things
(B) Freedom at Midnight
(C) War and Peace
(D) The Gathering Storm
110. Where is the popular tourist destination, Kailasagiri Hill located?
(A) Candolim, Goa
(B) Munnar, Kerala
(C) Vishakhapatnam, Andhra Pradesh
(D) Panchagani, Maharashtra
111. According to the United Nations, who is the world's largest producer of Maize between 2008-2010?
(A) United States
(B) India
(C) Brazil
(D) France
112. Which is the tallest mountain among the Alps mountain range of Europe?
(A) Mont Blanc
(B) Monte Rosa
(C) Matterhorn
(D) Grand Combin
113. Which of the following scientists discovered Penicillin?
(A) Gregor Mendel
(B) Alexander Fleming
(C) Sir Isaac Newton
(D) Albert Einstein
- (B) Music
(C) Literature
(D) Medicine
115. Who was appointed as Microsoft's chairman on 5th February 2014?
(A) Satya Nadella
(B) John Thompson
(C) Bill Gates
(D) Steve Ballmer
116. Who won the 2014 Australian Open Men's Singles title?
(A) Stanislas Wawrinka
(B) Rafael Nadal
(C) Juan Martin del Potro
(D) Andy Murray
117. Which of the following planets has the satellite 'Proteus'?
(A) Neptune
(B) Jupiter
(C) Mars
(D) Uranus
118. Which of the following amendment to the constitution of India has provided full statehood to Mizoram?
(A) 50th Amendment
(B) 51st Amendment
(C) 53rd Amendment
(D) 49th Amendment
119. Who among the following is the first Asian to win the Nobel Prize?
(A) C V Raman
(B) Rabindranath Tagore
(C) Mother Teresa
(D) Amartya Sen
120. When was the United Nations established?
(A) 1955
(B) 1945
(C) 1965
(D) 1935