

116

QUESTION PAPER
SERIES CODE

A

Registration No. :

--	--	--	--	--	--	--

Centre of Exam. : _____

Name of Candidate : _____

Signature of Invigilator

COMBINED ENTRANCE EXAMINATION, 2016

M.Sc. BIOTECHNOLOGY

[Field of Study Code : BIT]

Time Allowed : 3 hours

Maximum Marks : 240

INSTRUCTIONS FOR CANDIDATES

Candidates must read carefully the following instructions before attempting the Question Paper :

- (i) Write your Name and Registration Number in the space provided for the purpose on the top of this Question Paper and in the Answer Sheet.
- (ii) **Please darken the appropriate Circle of Question Paper Series Code on the Answer Sheet.**
- (iii) The Question Paper is divided into two Parts : Part—A and Part—B. Both Parts have multiple-choice questions. All answers are to be entered in the Answer Sheet provided with the Question Paper for the purpose by darkening the correct choice, i.e., (a) or (b) or (c) or (d) with BLUE/BLACK BALLPOINT PEN only against each question in the corresponding circle.
- (iv) Part—A consists of 60 questions and all are compulsory. Answer all the questions in the Answer Sheet provided for the purpose. Each correct answer carries 1 mark. **There will be negative marking and ½ mark will be deducted for each wrong answer.**
- (v) Part—B consists of 100 questions consisting Biological and Physical Sciences. **Answer any 60 questions.** Each correct answer carries 3 marks. **There will be negative marking and 1 mark will be deducted for each wrong answer.**
In case any candidate answers more than the required 60 questions, the first 60 questions attempted will be evaluated.
- (vi) Answer written by the candidates inside the Question Paper will not be evaluated.
- (vii) Calculators and Log Tables may be used.
- (viii) Pages at the end have been provided for Rough Work.
- (ix) Return the Question Paper and Answer Sheet to the Invigilator at the end of the Entrance Examination. **DO NOT FOLD THE ANSWER SHEET.**

INSTRUCTIONS FOR MARKING ANSWERS

1. Use only Blue/Black Ballpoint Pen (do not use pencil) to darken the appropriate Circle.
2. Please darken the whole Circle.
3. Darken ONLY ONE CIRCLE for each question as shown in example below :

Wrong ● (b) (c) ●	Wrong ⊗ (b) (c) (d)	Wrong ⊗ (b) (c) ⊗	Wrong ● (b) (c) ●	Correct (a) (b) (c) ●
----------------------	------------------------	----------------------	----------------------	--------------------------

4. Once marked, no change in the answer is allowed.
5. Please do not make any stray marks on the Answer Sheet.
6. Please do not do any rough work on the Answer Sheet.
7. Mark your answer only in the appropriate space against the number corresponding to the question.
8. **Ensure that you have darkened the appropriate Circle of Question Paper Series Code on the Answer Sheet.**

PART—A

Answer **all** questions

- Which of the following structure has delocalized π electrons?
 - CO_2
 - HCN
 - O_3
 - CO
- How many unpaired electrons are there in $\text{K}_3[\text{Fe}(\text{CN})_6]$?
 - 3
 - 1
 - 2
 - 5
- In $[\text{Co}(\text{NH}_3)_6]^{3+}$, oxidation number, coordination number and effective atomic number of cobalt are respectively
 - +3, 6 and 36
 - +3, 6 and 35
 - +3, 3 and 36
 - +6, 3 and 35
- Which of the following element has an ionic radius that is longer than its atomic radius?
 - Li
 - Cl
 - Mg
 - Al
- Which of the following compound has the lowest melting point?
 - NaCl
 - HCl
 - LiCl
 - KCl
- Which of the following ligand is strong field ligand?
 - H_2O
 - OH^-
 - CN^-
 - F^-

7. Which of the following compound is diamagnetic?
- (a) NO
 - (b) O₂
 - (c) H₂
 - (d) CO
8. Which of the following molecule contains nonpolar covalent bond?
- (a) HCl
 - (b) HBr
 - (c) F₂
 - (d) NH₃
9. What is the colour of Zn(II) compounds?
- (a) White
 - (b) Yellow
 - (c) Red
 - (d) Green
10. Which of the following statement about an enzyme is false?
- (a) An enzyme is usually a large protein
 - (b) An enzyme is a catalyst for biological reactions
 - (c) An enzyme is a chiral molecule
 - (d) An enzyme changes the equilibrium constant of a reaction
11. The hybridization of the central carbon in CH₃C≡N and the bond angle CCN are
- (a) sp² and 180°
 - (b) sp and 180°
 - (c) sp² and 120°
 - (d) sp³ and 109°
12. In XeF₂ molecule
- (a) the lone pairs occupy equatorial position
 - (b) two lone pairs occupy equatorial position and one lone pair occupies axial position
 - (c) one lone pair occupies equatorial position and two lone pairs occupy axial position
 - (d) the lone pairs occupy axial position

13. In ethylene molecule (C_2H_4), the H—C—H bond angle is
- (a) equal to 109.5°
 - (b) smaller than 120°
 - (c) greater than 120°
 - (d) equal to 120°
14. Cyclopentadienyl radical is
- (a) aromatic
 - (b) nonaromatic
 - (c) planar
 - (d) aliphatic
15. Which of the following compound has the highest boiling point?
- (a) Acetone
 - (b) Diethyl ether
 - (c) Methanol
 - (d) Ethanol
16. Coir, a natural fibre, which is often used commercially to make doormats, brushes etc. is extracted from
- (a) epicarp of coconut
 - (b) seed coat of coconut
 - (c) endocarp of coconut
 - (d) mesocarp of coconut

17. In mosses, conducting tissue is made up of
- (a) parenchyma cells
 - (b) xylem vessel elements
 - (c) companion cells
 - (d) collenchyma cells
18. Amensalism is a kind of interaction between two species in which
- (a) one species has beneficial effect and the other is not affected
 - (b) one species has detrimental effect and the other is not affected
 - (c) both species have detrimental effect
 - (d) both species have beneficial effect
19. A mutation in gene X gives a mutant phenotype. A second mutation in another gene Y restores the wild-type phenotype. The mutation in gene Y is a
- (a) suppressor mutation
 - (b) revertant
 - (c) restorer mutation
 - (d) recessive mutation
20. Invisible to the human eye, bacterial cells vary in size depending on the species. But most bacteria are usually measured in
- (a) micrometre
 - (b) millimetre
 - (c) angstrom
 - (d) nanometre
21. Zika virus is transmitted by
- (a) housefly
 - (b) sandfly
 - (c) aphid
 - (d) mosquito

22. Genetically engineered bacteria are being used in the commercial production of

- (a) melatonin
- (b) testosterone
- (c) insulin
- (d) thyroxine

23. Increased number of chromosomes occurs in

- (a) Turner's syndrome
- (b) Fragile X syndrome
- (c) Down syndrome
- (d) Klinefelter's syndrome

24. Normal microbiota is helpful to human beings as they produce

- (a) vitamin A
- (b) vitamin C
- (c) vitamin E
- (d) vitamin K

25. If there is a deficiency of antidiuretic hormone (ADH) its effect would be

- (a) the volume of urine output will increase
- (b) the volume of urine output will decrease
- (c) the pH of urine will increase from 5 to 8
- (d) the pH of urine will decrease from 8 to 5

26. Which ecological pyramid of the following is always upright and cannot be inverted?
- (a) Pyramid of biomass
 - (b) Pyramid of number
 - (c) Pyramid of energy
 - (d) Pyramid of food
27. If Rh -ve person donates blood to Rh +ve person for the second time. Then
- (a) Rh -ve person will have poor regeneration of blood and will die
 - (b) Rh +ve person will die
 - (c) Rh +ve person starts reacting to Rh -ve blood
 - (d) nothing happens to Rh +ve person
28. Which parts of the flower are collectively called perianth?
- (a) When androecium and gynoecium are similar
 - (b) When calyx and corolla are similar
 - (c) When androecium and calyx are similar
 - (d) When gynoecium and corolla are similar
29. In humans, spotted teeth are caused by a dominant sex-linked gene. A man with spotted teeth whose mother has normal teeth marries a woman with normal teeth. Therefore,
- (a) all of their daughters will have normal teeth
 - (b) all of their daughters will have spotted teeth
 - (c) none of their sons will have spotted teeth
 - (d) half of their sons will have spotted teeth
30. An example of innate immunity is
- (a) T lymphocyte
 - (b) B lymphocyte
 - (c) neutrophil
 - (d) thyroid cell
31. A ball thrown vertically upward returns to its starting point in 4 seconds. Initial speed of the ball is
- (a) 19.6 m/s
 - (b) 9.8 m/s
 - (c) 39.2 m/s
 - (d) 78.4 m/s

32. A force of 20 N gives a body of mass m an acceleration of 8 m/s^2 and a body of mass M an acceleration of 24 m/s^2 . What is the acceleration (in m/s^2) that this force will cause when the two masses are joined together?
- (a) 2
 - (b) 3
 - (c) 4
 - (d) 6
33. A sheet of copper has an area of 500 cm^2 at 0°C . If the coefficient of thermal expansion is 1.67×10^{-4} , then the area (in cm^2) of this sheet at 80°C will be
- (a) 501.34
 - (b) 500.67
 - (c) 502.73
 - (d) 503.44
34. The speed of red and yellow light are exactly same
- (a) in vacuum but not in air
 - (b) in air but not in vacuum
 - (c) in vacuum as well as in air
 - (d) neither in vacuum nor in air
35. When light is refracted from air to water the quantity that remains unchanged is
- (a) wavelength
 - (b) wave number
 - (c) wave velocity
 - (d) frequency
36. How far should an object be from a concave spherical mirror of radius 36 cm to form a real image that is one-ninth of its size?
- (a) 60 cm
 - (b) 72 cm
 - (c) 90 cm
 - (d) 180 cm

37. A raindrop falls near the surface of the earth with almost uniform velocity, because
- (a) its weight is negligible
 - (b) the force of surface tension balances its weight
 - (c) the force of viscosity balances its weight
 - (d) the drop is charged and the atmospheric electrical field balances its weight
38. A compressor pumps 70 litre of air into a 6 litre tank with the temperature remaining unchanged. If all the air is originally at 1 atmosphere pressure, then the final pressure (in atmosphere) of the air in the tank will be
- (a) 11.3
 - (b) 12.7
 - (c) 64.0
 - (d) 420.0
39. Let I_1 and I_2 be the moments of inertia of two bodies of identical geometric shape, the first made of aluminium and the second made of iron. Then
- (a) $I_1 < I_2$
 - (b) $I_1 = I_2$
 - (c) $I_1 > I_2$
 - (d) the relation between I_1 and I_2 depends on the geometrical shape
40. The motion of a particle is given by $x = A\sin\omega t + B\cos\omega t$. The motion is
- (a) not simple harmonic
 - (b) simple harmonic with amplitude $A + B$
 - (c) simple harmonic with amplitude $\sqrt{A^2 + B^2}$
 - (d) simple harmonic with amplitude $(A + B)/2$

41. Two light sources are called coherent, if they produce waves
- (a) of equal wavelength
 - (b) of equal intensity
 - (c) having same shape wavefront
 - (d) having a constant phase difference
42. X-rays cannot be diffracted by means of an ordinary grating due to its
- (a) large wavelength
 - (b) high speed
 - (c) short wavelength
 - (d) high energy
43. If V_0 is the peak voltage of the AC mains, the root-mean-square voltage will be
- (a) V_0
 - (b) $\frac{V_0}{\sqrt{2}}$
 - (c) $\sqrt{2}V_0$
 - (d) $2V_0$
44. Transmission lines from the powerhouse carry electricity at
- (a) low voltage and low current
 - (b) low voltage and high current
 - (c) high voltage and low current
 - (d) high voltage and high current

45. Optical fibres used in communication systems work on the principle of
- (a) refraction
 - (b) total internal reflection
 - (c) diffraction
 - (d) polarization
46. A die is thrown twice. The probability that the sum of points obtained is 10, is
- (a) $7/36$
 - (b) $4/36$
 - (c) $3/36$
 - (d) $11/36$
47. Two cards are drawn from a standard pack of 52 cards. The probability that both cards are aces is
- (a) $1/220$
 - (b) $1/221$
 - (c) $1/223$
 - (d) $1/225$
48. Equation of the parabola with focus at (2, 0) and directrix, $x + 2 = 0$ is
- (a) $y^2 = 4x$
 - (b) $y^2 = -4x$
 - (c) $y^2 = 12x$
 - (d) $y^2 = 8x$
49. The centre of the circle $2x^2 + 2y^2 + 14x - 2y + 7 = 0$ is
- (a) $(-7/2, 1/2)$
 - (b) $(-7/2, -1/2)$
 - (c) $(7/2, 1/2)$
 - (d) $(7/2, -1/2)$
50. The minimum value of $3\sin x + 4\cos x$ is
- (a) -5
 - (b) 5.5
 - (c) 3
 - (d) 5

51. The point at which the tangent to the curve $y = \sqrt{4x - 3} - 1$ has its slope $2/3$ is
- (a) (3, 2)
 - (b) (3, 1)
 - (c) (3, -2)
 - (d) (-3, 2)
52. The value of $\lim_{x \rightarrow 0} \frac{\sin 7x}{\sin 9x}$ is
- (a) $1/3$
 - (b) $3/2$
 - (c) $7/9$
 - (d) $-2/3$
53. The values of x for which the expression $\begin{vmatrix} 3 & x \\ x & 1 \end{vmatrix} = \begin{vmatrix} 3 & 2 \\ 4 & 1 \end{vmatrix}$ is satisfied are
- (a) $\pm 3\sqrt{2}$
 - (b) $\pm 2\sqrt{2}$
 - (c) $\pm 7\sqrt{2}$
 - (d) $\pm 5\sqrt{2}$
54. If A and B are nonsingular matrices of the same order, then AB is
- (a) nonsingular of same order
 - (b) singular of same order
 - (c) nonsingular of different order
 - (d) singular of different order
55. A square matrix A is invertible if and only if A is
- (a) singular matrix
 - (b) nonsingular matrix
 - (c) zero matrix
 - (d) rectangular matrix

56. For what value of (x, y) , the expression $\begin{bmatrix} 1 & 3 \\ 2 & -1 \end{bmatrix} \begin{bmatrix} x \\ y \end{bmatrix} = \begin{bmatrix} 4 \\ 1 \end{bmatrix}$ is satisfied?

- (a) $(1, 1)$
- (b) $(1, -1)$
- (c) $(-1, -1)$
- (d) $(-1, 1)$

57. The function f given by $f(x) = |x-1| + |x-2|$, $x \in \mathbb{R}$ is

- (a) differentiable at $x = 1, 2$
- (b) not differentiable at $x = 1, 2$
- (c) differentiable at $x = 1$ but not at 2
- (d) nowhere differentiable

58. The normal at the point $(1, 2)$ on the curve $2y + x^2 = 5$ is

- (a) $x - y + 1 = 0$
- (b) $x - y = 0$
- (c) $x + y + 1 = 0$
- (d) $xy = 1$

59. If $\tan \alpha = 1/2$ and $\tan \beta = 1/3$, then the value of $\alpha + \beta$ is

- (a) $\pi/2$
- (b) $\pi/4$
- (c) $\pi/3$
- (d) $\pi/12$

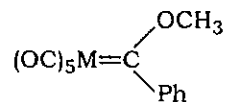
60. The value of $\int e^{3x} dx$ is

- (a) $\frac{e^{3x}}{3} + c$
- (b) $15e^{3x} + c$
- (c) $\frac{5e^{3x}}{3} + c$
- (d) $25 \tan x - 15x + c$

73. The binding energy per nucleon for deuteron and alpha particle are 1.1 MeV and 7.0 MeV respectively. The energy (in MeV) released when two deuterons fuse to form an alpha particle is
- (a) 2.2
 - (b) 28.0
 - (c) 4.8
 - (d) 23.6
74. A sample of radioactive substance has 10^6 nuclei. Its half-life is 20 second. The number of nuclei that will be left after 10 second is approximately
- (a) 1×10^5
 - (b) 2×10^5
 - (c) 7×10^5
 - (d) 9×10^5
75. Suppose that in hydrogen atom the electron is in the $n = 2$ state. The minimum energy (in eV) required to produce a H^+ ion will be
- (a) 27.2
 - (b) 13.6
 - (c) 6.8
 - (d) 3.4
76. Nature of the dominant force responsible for interaction between two protons that are 1 Å apart is
- (a) nuclear
 - (b) electromagnetic
 - (c) weak
 - (d) gravitational
77. One mole of monoatomic gas $\left(\gamma = \frac{5}{3}\right)$ is mixed with one mole of a diatomic gas $\left(\gamma = \frac{7}{5}\right)$. The value of γ of the mixture is
- (a) 1.40
 - (b) 1.50
 - (c) 1.67
 - (d) 0.71

78. Packing fraction of a body-centered cube is
- (a) 0.52
 - (b) 0.74
 - (c) 0.68
 - (d) 1.0
79. In the nuclear process ${}^{11}_6\text{C} \rightarrow {}^{11}_5\text{B} + e^+ + X$, the particle X is a/an
- (a) neutron
 - (b) neutrino
 - (c) antineutrino
 - (d) photon
80. In a p -type semiconductor
- (a) the majority carriers are protons
 - (b) the majority carriers are electrons
 - (c) the minority carriers are holes
 - (d) the majority carriers are holes
81. Number of f orbitals are
- (a) 5
 - (b) 3
 - (c) 7
 - (d) 14
82. The relation between energy (E) and wavelength (λ) is
- (a) $E = hc/\lambda$
 - (b) $E = h/\lambda$
 - (c) $E = hc\lambda$
 - (d) $E = hc/\lambda^2$
83. O_3 reacts with $\text{CH}_2=\text{CH}_2$ to form ozonide. On hydrolysis it forms
- (a) ethylene oxide
 - (b) HCHO
 - (c) ethylene glycol
 - (d) ethyl alcohol

84. The molecule



obeys 18-electron rule. The two metals satisfying the condition are

- (a) Cr and Re^+
 - (b) Mo and V
 - (c) V and Re^+
 - (d) Cr and V
85. The correct set of the biologically essential elements is
- (a) Fe, Mo, Cu, Zn
 - (b) Fe, Cu, Co, Ru
 - (c) Cu, Mn, Zn, Ag
 - (d) Fe, Ru, Zn, Mg
86. Reduction of $>\text{C}=\text{O}$ to CH_2 can be carried out with
- (a) catalytic reduction
 - (b) $\text{Na}/\text{C}_2\text{H}_5\text{OH}$
 - (c) Wolff-Kishner reduction
 - (d) LiAlH_4
87. Mulliken electronic configuration of CO molecule is
- (a) $1\sigma^2 2\sigma^2 3\sigma^2 4\sigma^2 5\sigma^2 1\pi^4$
 - (b) $1\sigma^2 2\sigma^2 3\sigma^2 4\sigma^2 5\sigma^2 1\pi^3$
 - (c) $1\sigma^2 2\sigma^2 3\sigma^2 4\sigma^2 5\sigma^2 1\pi^2$
 - (d) $1\sigma^2 2\sigma^2 3\sigma^2 4\sigma^2 5\sigma^2 1\pi^1$

88. What is the atomic term symbol for helium atom with electronic configuration $1s^2$?
- (a) $^2S_{1/2}$
 (b) 1P_0
 (c) 1S_0
 (d) 1S_1
89. Diels-Alder reaction normally yields endo-adduct as a major product. This is due to
- (a) lower stability of product
 (b) faster rate of formation of the endo-adduct
 (c) steric hindrance
 (d) secondary orbital interaction between a diene and a dienophile
90. Match the molecules with the rotor types :

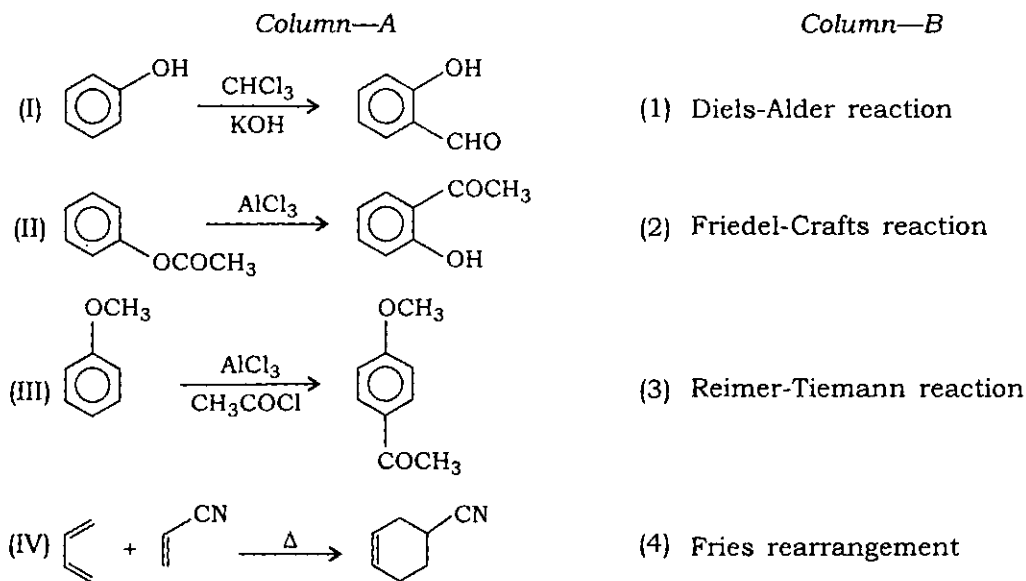
<i>Molecules</i>	<i>Rotor types</i>
(I) C_6H_6	(1) Asymmetric top
(II) CCl_4	(2) Spherical top
(III) CH_2Cl_2	(3) Symmetric top
(a) (I)—(3), (II)—(2), (III)—(1)	
(b) (I)—(2), (II)—(3), (III)—(1)	
(c) (I)—(1), (II)—(2), (III)—(3)	
(d) (I)—(3), (II)—(1), (III)—(2)	

91. The zero-point energy of a harmonic oscillator is
- (a) $\hbar\omega$
 (b) zero
 (c) $\frac{1}{2}\hbar\omega$
 (d) $2\hbar\omega$
92. The complex with minimum CFSE is
- (a) $[CoCl_4]^{2-}$
 (b) $[Co(H_2O)_6]^{3+}$
 (c) $[CoF_3(H_2O)_3]$
 (d) $[CoF_6]^{3-}$

93. C_{60} has

- (a) 14 pentagons and 18 hexagons
- (b) 12 pentagons and 18 hexagons
- (c) 12 pentagons and 20 hexagons
- (d) 10 pentagons and 20 hexagons

94. Match Column A with Column B :



- (a) (I)—(3), (II)—(4), (III)—(1), (IV)—(2)
- (b) (I)—(2), (II)—(1), (III)—(4), (IV)—(3)
- (c) (I)—(3), (II)—(4), (III)—(2), (IV)—(1)
- (d) (I)—(4), (II)—(3), (III)—(2), (IV)—(1)

95. Which of the following pair of compounds have the same number of lone pairs?

- (a) XeF_4 , ClF_3
- (b) XeO_4 , ICl_4^-
- (c) XeO_2F_2 , ICl_4^-
- (d) XeO_4 , ClF_3

96. Hapticity of cycloheptatriene in $\text{Mo}(\text{C}_7\text{H}_8)(\text{CO})_3$ is
- (a) 4
 - (b) 7
 - (c) 6
 - (d) 10
97. The cell voltage of Daniel cell $[\text{Zn} | \text{ZnSO}_4(\text{aq}) || \text{CuSO}_4(\text{aq}) | \text{Cu}]$ is 1.07 V. If reduction potential of $\text{Cu}^{2+} | \text{Cu}$ is 0.34 V, the reduction potential of $\text{Zn}^{2+} | \text{Zn}$ is
- (a) 1.141 V
 - (b) -1.41 V
 - (c) 0.73 V
 - (d) -0.73 V
98. A Carnot engine takes up 90 J of heat from the source at 300 K. Which of the following statement is correct?
- (a) It transfers 60 J of heat to the sink at 200 K
 - (b) It transfers 50 J of heat to the sink at 200 K
 - (c) It transfers 60 J of heat to the sink at 250 K
 - (d) It transfers 50 J of heat to the sink at 250 K
99. The Ziegler-Natta catalysts are
- (a) stereospecific
 - (b) nonmetallic complexes
 - (c) gaseous catalysts
 - (d) universal in all polymerization reactions
100. Which of the following biomolecule contains nontransition metal ion?
- (a) Vitamin
 - (b) Chlorophyll
 - (c) Hemoglobin
 - (d) Hemocyanin

101. A PCR reaction that continues for 30 cycles will produce approximately how many PCR products from a single template DNA molecule?
- (a) Approximately 1 thousand
 - (b) Approximately 1 lakh
 - (c) Approximately 1 million
 - (d) Approximately 1 billion
102. The basis of five classes of Ig molecules is
- (a) number of amino acid residues
 - (b) molecular weight of heavy chains
 - (c) structural differences in the carboxyl terminal portion of heavy chains
 - (d) structural differences in the amino terminal portion of heavy chains
103. Contact dermatitis is an example of
- (a) cytotoxic hypersensitivity
 - (b) anaphylaxis hypersensitivity
 - (c) cell-mediated hypersensitivity
 - (d) immune complex hypersensitivity
104. Plasmid of which of the following bacteria has been widely used as effective vector for specific gene transfer in plants?
- (a) *Agrobacterium*
 - (b) *Escherichia coli*
 - (c) *Bacillus thuringiensis*
 - (d) *Thermus aquaticus*
105. Eukaryotic protein-coding genes differ from their prokaryotic counterparts in that only eukaryotic genes
- (a) are present in only a single copy
 - (b) contain introns
 - (c) have a promoter
 - (d) transcribe mRNA
106. Which one of the following is true for disinfection?
- (a) Removal of microbes from liquids
 - (b) Destruction of all microbes on inanimate objects
 - (c) Prevention of infection
 - (d) Inhibition of bacterial growth

107. Nucleosomes are found in
- (a) *Escherichia coli*
 - (b) *Saccharomyces cerevisiae*
 - (c) Influenza virus
 - (d) Rickettsia spp.
108. A kind of covalent modification which occurs on both histones and DNA is
- (a) phosphorylation
 - (b) methylation
 - (c) acetylation
 - (d) succinylation
109. In DNA replication, each daughter DNA molecule contains one parental strand and one newly-synthesized strand. This is called
- (a) conservative replication
 - (b) repetitive replication
 - (c) semiconservative replication
 - (d) dispersive replication
110. The H1N1 strain of the influenza A virus emerged in Mexico and quickly spread worldwide over the next several months. More than 18000 people died from the pandemic. This virus had genetic components of swine influenza virus, an avian virus and a human influenza virus. The genetic process by which this pandemic strain of influenza A emerged is an example of
- (a) antigenic shift
 - (b) antigenic drift
 - (c) genetic reassortment
 - (d) point mutation
111. Secondary structures of protein are mainly maintained by
- (a) hydrogen bonds
 - (b) ionic bonds
 - (c) hydrophobic interactions
 - (d) van der Waals' forces

112. 1 map unit or centimorgan (cM) is equal to
- (a) 0.1% recombination
 - (b) 1% recombination
 - (c) 10% recombination
 - (d) 100% recombination
113. The animals which are relatively large and powerful and can combat water currents are called
- (a) neutans
 - (b) planktons
 - (c) nektons
 - (d) swimmers
114. Haploid human DNA has 3×10^6 kilobase pair. What is the total length (in centimetre) of human haploid DNA?
- (a) 102
 - (b) 10.2
 - (c) 51
 - (d) 5.1
115. Intrinsic fluorescence of protein is due to
- (a) aromatic amino acids
 - (b) sulphur-containing amino acids
 - (c) histidine
 - (d) proline
116. Enzymes which catalyze removal of groups from substrates without addition or removal of water are classified as
- (a) oxidoreductases
 - (b) lyases
 - (c) transferases
 - (d) hydrolases
117. Which of the following amino acid will be the site of enzyme modification by phosphorylation?
- (a) Arginine
 - (b) Cysteine
 - (c) Serine
 - (d) Phenylalanine

118. When several steps occur in a reaction, the overall rate
- (a) is determined by the step with the lowest activation energy
 - (b) is determined by the step with the highest activation energy
 - (c) is independent of activation energy
 - (d) is determined by the fastest step
119. Which of the following is a prosthetic group?
- (a) TPP
 - (b) FAD^+
 - (c) NAD^+
 - (d) Lipoic acid
120. In regulation of gene expression, the inducer
- (a) combines with a repressor and prevents it from binding to the promoter
 - (b) combines with a repressor and prevents it from binding to the operator
 - (c) binds to promoter and prevents the repressor from binding to the operator
 - (d) binds to operator and prevents the repressor from binding at this site
121. The part of plant used for culturing is
- (a) scion
 - (b) explant
 - (c) stock
 - (d) callus
122. Prokaryotic DNA gyrase is inhibited by
- (a) actinomycin
 - (b) cephalosporin
 - (c) tetracycline
 - (d) nalidixic acid

123. Which of the following bacteria can grow in acidic pH?
- (a) *Vibrio cholerae*
 - (b) *Lactobacilli*
 - (c) *Shigella* spp.
 - (d) *Salmonella*
124. Which of the following possesses both 5'-3' and 3'-5' exonuclease activities?
- (a) Klenow polymerase
 - (b) DNA polymerase III
 - (c) DNA polymerase I
 - (d) *Taq* DNA polymerase
125. Long-chain acyl-CoA penetrates mitochondria in the presence of
- (a) palmitate
 - (b) carnitine
 - (c) sorbitol
 - (d) DNP
126. The nature of the poliovirus given for oral vaccination (sarin vaccine) as part of the eradication programme is
- (a) heat-killed virus
 - (b) live attenuated strains of all three immunological types
 - (c) small dosage of wild-type live viruses
 - (d) formalin-inactivated viruses
127. Interferon- β is produced by
- (a) bacteria-infected cells
 - (b) virus-infected cells
 - (c) both virus- and bacteria-infected cells
 - (d) fungi-infected cells
128. Which of the following group of microorganisms has a high level of unsaturated fatty acids in their cell membrane?
- (a) Mesophilic
 - (b) Psychrophilic
 - (c) Thermophilic
 - (d) Hyperthermophilic

129. In a four-point (ABCD) cross between Hfr and F strains of *E. coli*, the pairwise frequencies of recombination fell in the following order :

$$AB > AC > AD$$

The most probable order of the genes on bacterial chromosome would be

- (a) ABCD
 - (b) ACDB
 - (c) ADCB
 - (d) ABDC
130. A morphogen acts
- (a) in a concentration-dependent way to elicit different cell fates
 - (b) as an inducer to cause a group of cells to differentiate in one particular way
 - (c) to promote the formation and morphology of complex organs
 - (d) as a regulator of morphology of an animal
131. The effect of auxin diffusing from the apical bud on the lateral shoots is known as
- (a) promoting effect
 - (b) compensatory effect
 - (c) inhibitory effect
 - (d) supporting effect
132. Coconut milk factor is
- (a) abscisic acid
 - (b) auxin
 - (c) cytokinin
 - (d) gibberellin
133. Development involves a distinctive larval stage in many members of the phylum
- (a) Arthropoda
 - (b) Mammalia
 - (c) Avis
 - (d) Reptilia

134. Sodium dodecyl sulphate is used in gel electrophoresis experiments for the separation of a mixture of proteins based on their molecular size. SDS is used in this experiment to
- (a) solubilize the proteins
 - (b) stabilize the proteins
 - (c) decrease the surface tension of the buffer
 - (d) have uniform charge density on the proteins
135. Cell differentiation during animal development does not normally involve
- (a) differential gene expression
 - (b) loss of developmental potential
 - (c) loss of genetic information
 - (d) epigenetic mechanism of gene regulation
136. Which of the following problem makes it impossible to satisfy all of Koch's postulates?
- (a) Microorganism causes serious symptoms in humans
 - (b) Microorganism cannot be isolated in pure culture
 - (c) Species of microorganism is disputed
 - (d) Genes from the microorganism cannot be amplified by PCR
137. A concentrated protein solution was diluted 100 times with a buffer at pH 7.0 and the resulting solution gave an absorbance of 0.362 in a UV spectrophotometer at 280 nm using a 1 cm path length quartz cuvette. Given the extinction coefficient of the protein $5189 \text{ M}^{-1} \text{ cm}^{-1}$, the concentration of the undiluted protein solution in millimolar units would be
- (a) 0.69
 - (b) 0.0069
 - (c) 1.0
 - (d) 6.9
138. Cholesterol biosynthesis is regulated by enzyme
- (a) thiolase
 - (b) HMG-CoA synthase
 - (c) HMG-CoA reductase
 - (d) cis-prenyl transferase

139. Which of the following test is the most sensitive measure of antibody?
- Precipitation
 - Agglutination
 - Radioimmunoassay
 - Radial immunodiffusion
140. Somaclonal variations are the ones
- caused by mutagens
 - produced by gamma rays
 - produced during tissue culture
 - caused during sexual embryogeny
141. If A and B are singular matrices of the same order, then AB is
- nonsingular of same order
 - singular of same order
 - nonsingular of different order
 - singular of different order
142. A square matrix A is non-invertible if and only if A is
- singular matrix
 - Hermitian matrix
 - identity matrix
 - orthogonal matrix
143. A unit normal vector of the cone of revolution $z^2 = 4(x^2 + y^2)$ at $(1, 0, 2)$ is
- $\frac{2\hat{i} - \hat{k}}{\sqrt{5}}$
 - $\frac{\hat{i} - \hat{k}}{\sqrt{5}}$
 - $\frac{\hat{i} - 2\hat{k}}{\sqrt{5}}$
 - $\frac{2\hat{i} - 2\hat{k}}{\sqrt{5}}$

144. For any vector \mathbf{A} , the correct statement is
- $\text{div curl } \mathbf{A} = 0$
 - $\text{curl div } \mathbf{A} = 0$
 - $\text{curl curl } \mathbf{A} = 0$
 - $\text{grad div } \mathbf{A} = 0$
145. The value of $\lim_{n \rightarrow \infty} \int_0^{2\pi} \frac{\sin nx}{x^2 + n^2} dx$ is
- 1
 - 2
 - 0
 - 1
146. A solution of the differential equation $(x^2 + y^2)dx - 2xydy = 0$ is
- $x^2 - y^2 = cy$
 - $x^2 - y^2 = cx$
 - $x^2 - y^2 = cx^3$
 - $x^2 - y^2 = cxy$
147. The functions x^4 and $x^3|x|$ are linearly independent on
- $[-1, 1]$
 - $[-1, 0]$
 - $[0, 1]$
 - $[0, \frac{1}{2}]$
148. The function $f : [-2, 1] \rightarrow [0, 4]$ defined by $f(x) = x^2$ is
- surjective but not injective
 - not surjective but injective
 - surjective as well as injective
 - neither surjective nor injective
149. Choose the incorrect statement :
- The set of real numbers is a group under usual addition
 - The set of rational numbers is a group under usual addition
 - The set of irrational numbers is a group under usual addition
 - The set of complex numbers is a group under usual addition

150. Choose the incorrect statement :

- (a) The set $\{0, 2, 4\}$ is a group under usual addition modulo 6
- (b) The set $\{0, 1, 2, 3, 4, 5\}$ is a group under usual addition modulo 6
- (c) The set $\{0, 1, 3, 5\}$ is a group under usual addition modulo 6
- (d) The set $\{0, 3\}$ is a group under usual addition modulo 6.

151. A solution of the differential equation $\frac{dy}{dx} = \frac{x+y+4}{x+y-6}$ is

- (a) $y - x - 5\log(x + y - 1) = c$
- (b) $y - x^3 - 5\log(x + y - 1) = c$
- (c) $y - x - 5\log(x^2 + y - 1) = c$
- (d) $y^2 - x - 5\log(x + y - 1) = c$

152. A solution of the differential equation $\frac{dy}{dx} + \frac{y}{x} = \frac{y^2}{x} \log x$ is

- (a) $y - x^2 - 5\log(x + y - 1) = c$
- (b) $\frac{1}{y} = cx + \log x + 1$
- (c) $y - x - 5\log(x^2 + y - 1) = c$
- (d) $y^2 - x^2 - 5\log(x + y - 1) = c$

153. The eigenvalues of a skew-symmetric matrix are

- (a) only purely imaginary
- (b) purely imaginary or zero
- (c) any real number
- (d) any complex number

154. For which value of k , the vector $(1, -2, k)$ in \mathbb{R}^3 is a linear combination of the vectors $(3, 0, -2)$ and $(2, -1, -5)$?

- (a) 12
- (b) 8
- (c) 4
- (d) -4

155. The residue of the function $\frac{\sin z}{z^2}$ at $z = 0$ is

- (a) 1
- (b) $2\pi i$
- (c) 2
- (d) $4\pi i$

156. Let $f: \mathbb{R} \rightarrow \mathbb{R}$ be a differentiable function such that $f'(0) = 0$. Suppose, $g: \mathbb{R}^2 \rightarrow \mathbb{R}$ is a map defined by $g(x, y) = f(\sqrt{x^2 + y^2})$. Then

- (a) g is not continuous at $(0, 0)$
- (b) g is continuous at $(0, 0)$ only
- (c) g is everywhere continuous
- (d) g is nowhere continuous

157. Let $f(x, y) = \frac{xy^2}{x^2 + y^4}$, $(x, y) \neq (0, 0)$ and $f(x, y) = 0$, otherwise. Then,

- (a) f is continuous at $(0, 0)$
- (b) f is differentiable at $(0, 0)$ only
- (c) f is not differentiable at $(0, 0)$ only
- (d) f is continuous everywhere but not differentiable at $(0, 0)$

158. The all critical points (x, y) of the function $f(x, y) = x^3 + y^3 - 3x - 12y + 20$ are

- (a) $(\pm 1, \pm 2)$
- (b) $(\pm 2, \pm 1)$
- (c) $(\pm 1, 2)$
- (d) $(1, \pm 2)$

159. For positive real numbers a and b , the area of the ellipse $x = a \cos \theta$ and $y = b \sin \theta$ is

- (a) πab sq. unit
- (b) $2\pi ab$ sq. unit
- (c) $2\pi a^2 b$ sq. unit
- (d) $\pi^2 a^2 b^2$ sq. unit

160. The radius of convergence of the series $\sum_{n=1}^{\infty} \frac{z^n}{n!}$ is

- (a) 1
- (b) ∞
- (c) 0
- (d) 3.5

SPACE FOR ROUGH WORK

SPACE FOR ROUGH WORK

/116-A

35

[P.T.O.]

SPACE FOR ROUGH WORK
