

જય ગિરનારી
GUJCET-E-2015

Test Booklet No.

01040

Test Booklet Code

D

This booklet contains 48 pages.

DO NOT open this Test Booklet until you are asked to do so.

Important Instructions :

- 1) This test consists 120 questions of Physics, Chemistry and Biology. Each question carries 1 mark. For each correct response the candidate will get 1 mark. For each incorrect response $\frac{1}{4}$ mark will be deducted. Maximum marks is 120.
- 2) This Test is of 3 hours duration.
- 3) Use **Black Ball Point Pen only** for writing particulars on OMR Answer Sheet and marking answers by darkening the circle '•'.
- 4) Rough work is to be done on the space provided for this purpose in the Test Booklet only.
- 5) **On completion of the test, the candidate must handover the Answer Sheet to the Invigilator in the Room / Hall. The candidates are allowed to take away this Test Booklet with them.**
- 6) The CODE for this Booklet is D. Make sure that the CODE printed on the Answer Sheet is the same as that on this booklet. In case of discrepancy, the candidate should immediately report the matter to the Invigilator for replacement of both the Test Booklet and the Answer Sheet.
- 7) The candidate should ensure that the Answer Sheet is not folded. Do not make any stray marks on the Answer Sheet.
- 8) Do not write your Seat No. anywhere else, except in the specified space in the Test Booklet / Answer Sheet.
- 9) Use of White fluid for correction is not permissible on the Answer Sheet.
- 10) Each candidate must show on demand his / her Admission Card to the Invigilator.
- 11) No candidate, without special permission of the Superintendent or Invigilator, should leave his / her seat.
- 12) Use of Manual Calculator is permissible.
- 13) The candidate should not leave the Examination Hall without handing over their Answer Sheet to the Invigilator on duty and must sign the Attendance Sheet (Patrak - 01). Cases where a candidate has **not** signed the Attendance Sheet (Patrak - 01) be deemed not to have handed over the Answer Sheet and dealt with as an unfair means case.
- 14) The candidates are governed by all Rules and Regulations of the Board with regard to their conduct in the Examination Hall. All cases of unfair means will be dealt with as per Rules and Regulations of the Board.
- 15) No part of the Test Booklet and Answer Sheet shall be detached under any circumstances.
- 16) The candidates will write the Correct Test Booklet Code as given in the Test Booklet / Answer Sheet in the Attendance Sheet. (Patrak - 01)

SEAL

PHYSICS

$$W = VQ$$

$$V = \frac{W}{Q}$$

$$= \frac{Nm}{Coulomb}$$

$$R = \frac{V}{I} = \frac{Volt}{Amp}$$

$$= \frac{Coulomb \text{ metre}}{Coulomb \text{ metre}}$$

$$= \frac{Nm}{Amp \cdot \text{time}} = \frac{kg \cdot m^2}{m^3 \cdot s^2}$$

$$= \frac{kg}{m \cdot s^2}$$

1) Match the following two columns.

Column I		Column II	
a)	Electrical resistance	p)	$ML^3T^{-3}A^{-2}$
b)	Electrical potential	q)	$ML^2T^{-3}A^{-2}$
c)	Specific resistance	r)	$ML^2T^{-3}A^{-1}$
d)	Specific conductance	s)	None of these

- (A) $a-q, b-s, c-r, d-p$ ✓
 (B) $a-p, b-q, c-s, d-r$ ✓
 ✓(C) $a-q, b-r, c-p, d-s$
 (D) $a-p, b-r, c-q, d-s$

$$V = \frac{kq}{r} = \frac{q}{m} = \frac{C}{m}$$

$$ML^2T^{-3}A^{-1}$$

$$A^{-2}$$

2) Angle of minimum deviation for a prism of refractive index 1.5 is equal to the angle of prism of given prism. Then the angle of prism is
 ($\sin 48^\circ 36' = 0.75$)

- (A) $41^\circ 24'$ (B) 60°
 (C) 80° (D) $82^\circ 48'$

$$\delta_m = A$$

$$\mu = 1.5$$

$$A = \sin^{-1} \left(\frac{A + \delta_m}{2} \right)$$

$$= \sin^{-1} \left(\frac{A}{2} \right)$$

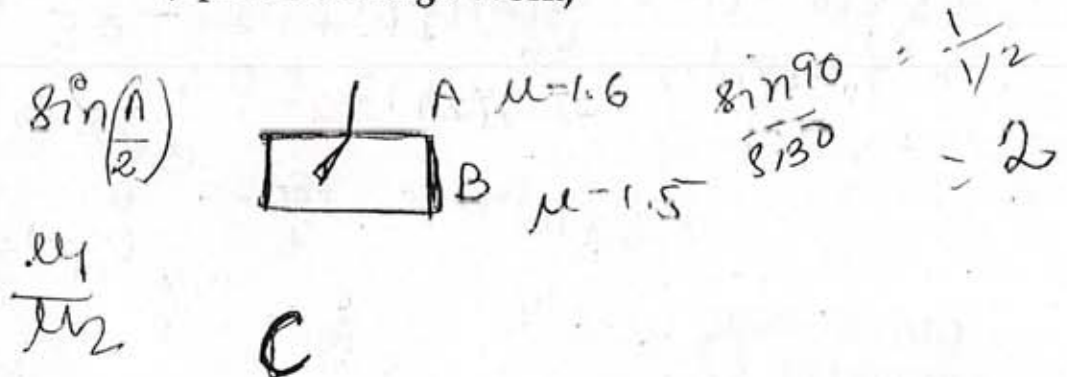
3) A ray of light passes from a medium A having refractive index 1.6 to the medium B having refractive index 1.5. The value of critical angle of medium A is _____.

- ✓(A) $\sin^{-1} \left(\frac{16}{15} \right)$ (B) $\sin^{-1} \left(\frac{1}{2} \right)$
 (C) $\sin^{-1} \sqrt{\frac{16}{15}}$ (D) $\sin^{-1} \left(\frac{15}{16} \right)$

$$1.5 = \frac{\sin \left(\frac{3A}{2} \right)}{\sin \left(\frac{A}{2} \right)}$$

$$\frac{1}{\sin C}$$

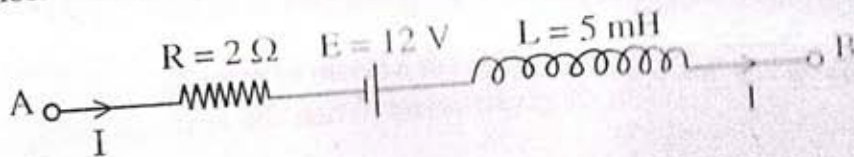
(Space for Rough Work)



- 4) The power of plane mirror is _____.
- (A) ∞ (B) 2D
(C) 0 (D) 4D

- 5) Light waves travel from optically rarer medium to optically denser medium. Its velocity decreases because of change in _____.
- (A) frequency (B) amplitude
(C) wavelength (D) phase
- $c = \frac{v}{f}$
 $v = \frac{h\nu}{\lambda}$

- 6) The Network shown in Figure is a part of the circuit. (The battery has negligible resistance)



At a certain instant the current $I = 2 \text{ A}$ and it is decreasing at the rate of 10^2 As^{-1} . What is the potential difference between the points B and A?

- (A) 8.0 V (B) 10 V
(C) 8.5 V (D) 15 V
- 7) A rod of 10 cm length is moving perpendicular to uniform magnetic field of intensity $5 \times 10^{-4} \text{ Wb/m}^2$. If the acceleration of the rod is 3 m/s^2 , then the rate of increase of induced emf is _____.

- (A) $2.5 \times 10^{-4} \text{ Vs}^{-1}$
(C) $25 \times 10^{-4} \text{ Vs}$

- (B) $20 \times 10^{-4} \text{ Vs}$
(D) $20 \times 10^{-4} \text{ Vs}^{-1}$

$$\begin{aligned} \epsilon &= L \frac{dI}{dt} \\ &= 5 \times 10^{-3} (10^2) \\ &= 5 \times 10^{-1} \end{aligned}$$

(Space for Rough Work)

$$V_A - IR + 12 - 0.5 = V_B$$

$$-(2)(2) + 12 = V_B - V_A$$

$$-4 + 12 = 0.5$$

$$2.5 \times 10^{-4}$$

$$\frac{\epsilon}{t} = \frac{Bvl}{t} = Bal$$

$$5 \times 10^{-4} \times 10 \times 10^{-2} \times 5$$

8) A current of $\frac{25}{\pi}$ Hz frequency is passing through an A.C. circuit having series combination of $R = 100 \Omega$ and $L = 2 \text{ H}$, the phase difference between voltage and current is _____

- (A) 90° (B) 30°
(C) 60° (D) 45°

$$\tan \delta = \frac{\omega L}{R}$$

$$= \frac{2\pi \left(\frac{25}{\pi}\right) (2)}{100}$$

9) In A.C. circuit having only capacitor, the current _____

- (A) lags behind the voltage by $\frac{\pi}{2}$ in phase
(B) leads the voltage by π in phase
(C) leads the voltage by $\frac{\pi}{2}$ in phase
(D) lags behind the voltage by π in phase

$$\tan \delta = 1$$

$$\delta = 45^\circ$$

10) An alternating voltage given as $V = 100\sqrt{2} \sin 100t$ volt is applied to a capacitor of $1 \mu\text{F}$. The current reading of the ammeter will be equal to _____ mA.

- (A) 10 (B) 40
(C) 20 (D) 80

$$V_m = 100\sqrt{2}$$

$$\omega = 100$$

$$I = \frac{V_m}{Z} = \frac{100\sqrt{2}}{\sqrt{\left(\frac{1}{\omega C}\right)^2}}$$

11) The distance of the closest approach of an alpha particle fired at a nucleus with kinetic energy K is r_0 . The distance of the closest approach when the α particle is fired at the same nucleus with kinetic energy $2K$ will be

- (A) $\frac{r_0}{2}$ (B) $\frac{r_0}{4}$
(C) $4r_0$ (D) $2r_0$

$$\frac{100\sqrt{2}}{\sqrt{\frac{1}{100 \times 10^{-6}}}}$$

222
16
23

$$C = 1$$

$$\omega C = 1 \times 10^{-6} \times 100$$

$$I = \frac{V}{Z}$$

(Space for Rough Work)

V_{rms}

$$100 \times 100 \times 1 \times 10^{-6}$$

$$10^{-2} \text{ A}$$

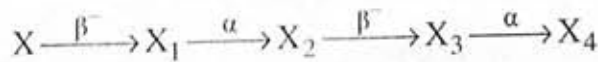
$$100 \times 100$$

$$10^{-3} \text{ A} = 1 \text{ mA}$$

$$\frac{10^{-2}}{10^{-3}}$$

- 12) Number of spectral line in hydrogen atom is
- (A) 6 (B) 15
(C) 8 (D) ∞

- 13) A radioactive element X disintegrates successively as under



If atomic number and atomic mass number of X are respectively 72 and 180, what are the corresponding values for X_4 ?

- 14) The energy released by the fission of one uranium atom is 200 MeV. The number of fission per second required to produce 6.4 W power is

- (A) 10^{11} (B) 10^{10}
(C) 2×10^{11} (D) 2×10^{10}

- 15) If by successive disintegration of ${}_{92}\text{U}^{238}$, the final product obtained is

${}_{82}\text{Pb}^{206}$, then how many number of α and β particles are emitted?

- (A) 8 and 6 (B) 12 and 6
(C) 6 and 8 (D) 8 and 12

(Space for Rough Work)

Handwritten solution for Q15:

Initial: ${}_{92}\text{U}^{238}$ (Z=92, A=238)

Final: ${}_{82}\text{Pb}^{206}$ (Z=82, A=206)

Change in mass number: $238 - 206 = 32$

Change in atomic number: $92 - 82 = 10$

Let number of α particles = x and number of β particles = y .

Equations:

$$4x = 32 \implies x = 8$$

$$2x - y = 10 \implies 16 - y = 10 \implies y = 6$$

Final answer: 8 α and 6 β particles.

Handwritten decay chain:

$${}_{92}\text{U}^{238} \xrightarrow{\alpha} {}_{90}\text{Th}^{234} \xrightarrow{\beta^-} {}_{91}\text{Pa}^{234} \xrightarrow{\beta^-} {}_{92}\text{U}^{234} \xrightarrow{\alpha} {}_{88}\text{Ra}^{226} \xrightarrow{\alpha} {}_{86}\text{Rn}^{222} \xrightarrow{\alpha} {}_{84}\text{Po}^{218} \xrightarrow{\alpha} {}_{82}\text{Pb}^{214} \xrightarrow{\beta^-} {}_{83}\text{Bi}^{214} \xrightarrow{\beta^-} {}_{84}\text{Po}^{214} \xrightarrow{\alpha} {}_{82}\text{Pb}^{210} \xrightarrow{\alpha} {}_{80}\text{Tl}^{206} \xrightarrow{\beta^-} {}_{81}\text{Pb}^{206}$$



$$0.04 = (9 \times 10^{-3}) R_L$$

$$20 = R_L$$

$$V_{BE} = 0.04$$

$$I_B = 20 \mu A$$

$$I_C = 2$$

$$R_L = ?$$

$$\beta = \frac{2 \times 10^{-3}}{20 \times 10^{-6}}$$

$$= 100$$

16) A change of 0.04 V takes place between the base and the emitter when an input signal is connected to the CE transistor amplifier. As a result, 20 μA change take place in the base current and a change of 2 mA takes place in the collector current. Find the input resistance and A.C. current gain.

(A) $2k\Omega, 100$

(B) $2k\Omega, 200$

(C) $1k\Omega, 100$

(D) $1k\Omega, 200$

$$\beta R_L = A_v$$

17) A plane polarized light is incident normally on a tourmaline plate. Its \vec{E} vectors make an angle of 60° with the optic axis of the plate. Find the percentage difference between initial and final intensities.

(A) 25%

(B) 75%

(C) 50%

(D) 90%

$$E_2$$

$$E_1/2$$

$$E_1$$

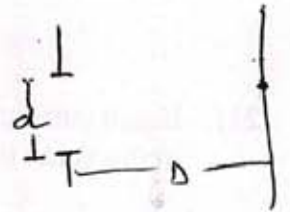
18) Light of wave length λ is incident on slit of width d . The resulting diffraction pattern is observed on a screen placed at distance D . The linear width of central maximum is equal to width of the slit, then $D =$ _____.

(A) $\frac{d^2}{2\lambda}$

(B) $\frac{d}{\lambda}$

(C) $\frac{2\lambda^2}{d}$

(D) $\frac{2\lambda}{d}$



$$x d = D$$

$$\frac{x d}{D} = \lambda$$

$$\frac{x d}{D} = \lambda$$

$$2\lambda$$

(Space for Rough Work)

$$\frac{x d}{D} = \lambda$$

$$x = d$$

$$\frac{d^2}{2D} = \lambda$$

$$D = \frac{d^2}{2\lambda}$$

19) In a N-P-N transistor about 10^{10} electrons enter the emitter in 2 μ s, when it is connected to a battery. Then $I_E =$ _____ μ A.

(A) 200

(B) 800

(C) 400

(D) 1600

$$t = 2 \times 10^{-6}$$

$$\frac{10^{10} \times 1.6 \times 10^{-19}}{2 \times 10^{-6}}$$

$$0.8 \times 10^{-3}$$

0.000800

20) The effective length of a magnet is 31.4 cm and its pole strength is 0.8 Am. The magnetic moment, if it is bent in the form of a semicircle is _____ Am^2 .

(A) 1.6

(B) 0.16

(C) 1.2

(D) 0.12

$$l = 31.4 \times 10^{-2}$$

$$p = 0.8$$

$$m = ?$$

$$m = 0.8 \times 2 \times 10^{-1}$$



$$2\pi r = 31.4 \times 10^{-2}$$

$$r = 10 \times 10^{-2}$$

$$r = 10^{-1}$$

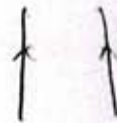
21) Equal currents are passing through two very long and straight parallel wires in the same direction. They will _____.

(A) repel each other

(B) lean towards each other

(C) attract each other

(D) neither attract nor repel each other



$$\frac{\phi}{J} = \frac{NAK}{J}$$

24)

$$G =$$

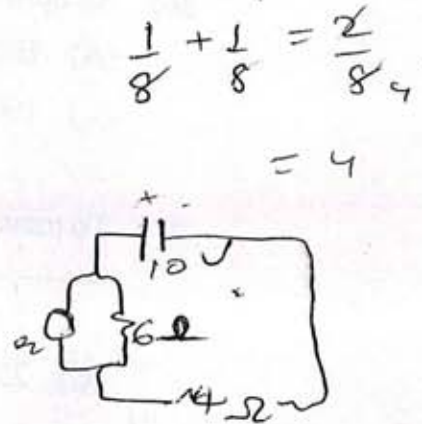
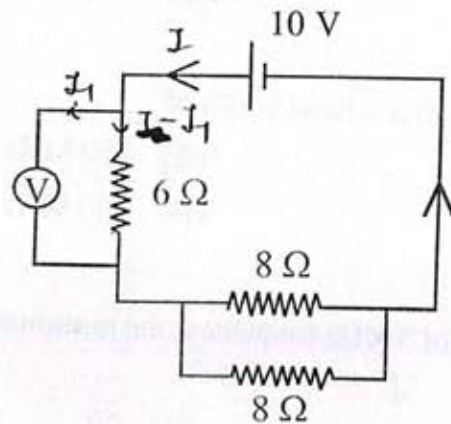
$$E =$$

$$R =$$

$$\phi =$$

(Space for Rough Work)

- 22) A voltmeter of a very high resistance is joined in the circuit as shown in figure. The voltage shown by this voltmeter will be _____.



- (A) 6 V (B) 2.5 V
(C) 5 V (D) 3 V

- 23) A galvanometer of resistance 50Ω is connected to a battery of 8 V along with a resistance of 3950Ω in series. A full scale deflection of 30 div is obtained in the galvanometer. In order to reduce this deflection to 15 division, the resistance in series should be _____ Ω

$$\frac{\phi}{J} = \frac{NAk}{J}$$

- (A) 7900 (B) 2000
(C) 1950 (D) 7950

- 24) At a place on Earth, the vertical component of Earth's magnetic field is $\sqrt{3}$ times its horizontal component. The angle of dip at this place is _____.

- (A) 30° (B) 45°
(C) 60° (D) 0°

$G = 50$
 $E = 8$
 $R = 3950$
 $\phi = 30$

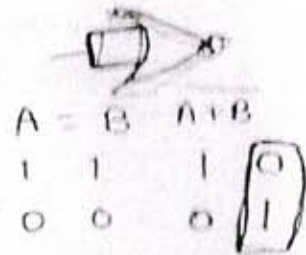
(Space for Rough Work)

$B_v = \sqrt{3} B_h$
 $\frac{B_v}{B_h} = \sqrt{3} = \tan \phi$
 $\phi = 60^\circ$
 $\sin \phi = \frac{3}{2}$
 $\cos \phi = \frac{1}{2}$
 $\tan \phi = \sqrt{3}$
 $\phi = 60^\circ$

25) Which gate can be obtained by shorting both the input terminals of a NOR gate.

- (A) OR
(C) NOT

- (B) AND
(D) NAND



26) An optical fiber can offer a band width of _____.

(A) 100 MHz
(C) 100 GHz

(B) 750 MHz
(D) 250 MHz

27) To transmit a signal of 3 KHz frequency, the minimum length of antenna is _____ km

- (A) 20
(C) 25

$f = 3 \times 10^3$
 $\sqrt{2\pi}$

- (B) 50
(D) 75

28) 27 identical drops of mercury are charged simultaneously with the same potential of 10 Volt. Assuming the drop to be spherical, if all the charged drops are made to combine to form one large drop, then its potential will be _____ Volt.

- (A) 90
(C) 40

$10 = \frac{kq}{r}$ $q = \frac{10r}{k}$
 $27 \times = \frac{k(27 \frac{10r}{k})}{3r}$ (B) 160
(D) 10

29) When 10^{19} electrons are removed from a neutral metal plate through some process, the charge on it becomes _____.

- (A) -1.6 C
(C) +1.6 C

- (B) 10^{19} C
(D) 10^{-19} C

(Space for Rough Work)

$27 \left[\frac{4}{3} \pi r^3 \right] = \frac{4}{3} \pi R^3$

$R^3 = 27 r^3$
 $R = 3r$

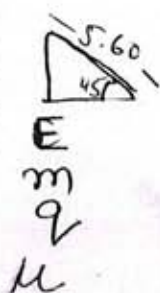
$V = \frac{kq}{r}$
 $V = \frac{kq}{3r}$
 $V = \frac{k(27 \frac{10r}{k})}{3r} = \frac{10}{3}$

$\frac{kq}{r} = 10$
 $q = \frac{10r}{k}$

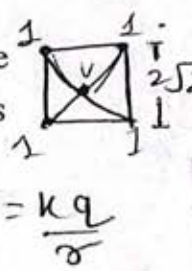


- 30) One moving electron when comes closer to other stationary electron, then its kinetic energy and potential energy respectively _____ and _____.
- (A) increases, decreases (B) decreases, increases
 (C) increases, increases (D) decreases, decreases

- 31) An inclined plane of length 5.60 m making an angle of 45° with the horizontal is placed in an uniform electric field $E = 100 \text{ Vm}^{-1}$. A particle of mass 1 kg and charge 10^{-2} C is allowed to slide down from rest position from maximum height of slope. If the co-efficient of friction is 0.1, the time taken by the particle to reach the bottom is _____.
- (A) 1 s (B) 1.41 s
 (C) 2 s (D) None of these

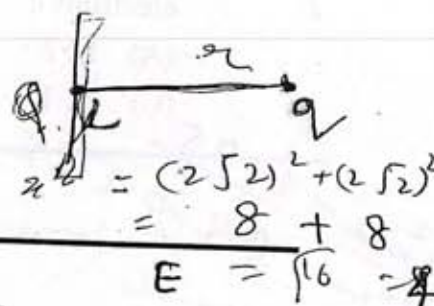


- 32) Charges $1 \mu\text{C}$ are placed at each of the four corners of a square of side $2\sqrt{2} \text{ m}$. The potential at the point of intersection of the diagonals is _____ ($K = 9 \times 10^9 \text{ SI unit}$)
- (A) $18 \times 10^3 \text{ V}$ (B) 1800 V
 (C) $18\sqrt{2} \times 10^3 \text{ V}$ (D) None of these



- 33) A point charge q is situated at a distance r on axis from one end of a thin conducting rod of length L having a charge Q [Uniformly distributed along its length]. The magnitude of electric force between the two is _____.

- (A) $\frac{2KQ}{r(r+L)}$ (B) $\frac{KQq}{r(r-L)}$
 (C) $\frac{KQq}{r^2}$ (D) $\frac{KQq}{r(r+L)}$



(Space for Rough Work)

$$F = \frac{kqQ}{(r)^2}$$

$$\frac{k(1) \times 10^{-6}}{2} + \frac{k(1)(10^{-6})}{2} \times 4$$

$$\left(\frac{k 10^{-6}}{2} \right) \times 4$$

$$E = \sqrt{16} = 4$$

$$2x^2 = (2\sqrt{2})^2$$

$$x^2 = 2\sqrt{2}$$

$$x = 2$$

$$F = EQ$$

$$18 \times 10^{-6} + 9$$

34) If alpha particle and deuteron move with velocity v and $2v$ respectively, the ratio of their de - Broglie wave length will be _____.

(A) $1:\sqrt{2}$

(B) $1:1$

(C) $2:1$

(D) $\sqrt{2}:1$

$$\lambda = \frac{h}{mv}$$

$$\frac{\lambda_1}{\lambda_2} = \frac{m_2 v_2}{m_1 v_1}$$

$$= \frac{2m(2v)}{(4m)(v)}$$

35) de - Broglie wave length of atom at TK absolute temperature will be

(A) $\frac{h}{mKT}$

(B) $\frac{\sqrt{2mKT}}{h}$

(C) $\frac{h}{\sqrt{3mKT}}$

(D) $\sqrt{2mKT}$

$$mv = \sqrt{3mKT}$$

$$\frac{1}{2}mv^2 = 3/2 kT$$

If the wave length of light is 4000\AA , then the number of waves in 1 mm length will be _____.

(A) 25

(B) 250

(C) 2500

(D) 25000

37) The frequencies of X rays, γ rays and Ultra violet rays are respectively p, q and r then

(A) $p < q, q > r$

(B) $p < q, q < r$

(C) $p > q, q > r$

(D) $p > q, q < r$

$$\lambda \propto \frac{1}{f}$$

38) Photons having energy 1eV and 2.5 eV successively incident on a metal, having work function is 0.5 eV. The ratio of maximum speed of emitted electrons is

(A) 1:2

(B) 3:1

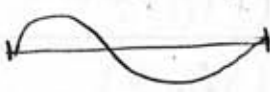
(C) 2:1

(D) 1:3

2 (Space for Rough Work)

$$\lambda = 4000 \times 10^{-10} \text{ m} \rightarrow 4 \times 10^{-7} \text{ m}$$

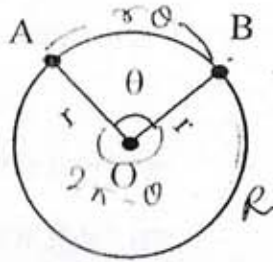
$$v = \sqrt{2meV}$$

$$m \sqrt{2meV}$$


$$\frac{10^{-3}}{4000 \times 10^{-10}}$$

$$2.5 \times 10^3$$

39) A and B are two points on a uniform ring of radius r . The resistance of the ring is R . $\angle AOB = \theta$ as shown in the figure. The equivalent resistance between points A & B is _____.



$$\frac{R_1 = \frac{\rho l_1}{A} = \frac{\rho(r\theta)}{A}}{R_2 = \frac{\rho l_2}{A} = \frac{\rho(2\pi - \theta)}{A}}$$

$2\pi r \rightarrow R$
 $r\theta \rightarrow ?$

$$\frac{R \cdot \theta}{2\pi r} = \frac{\rho \theta}{2\pi} \quad (A) \quad \frac{R\theta}{2\pi}$$

$$\frac{R}{4\pi} (2\pi - \theta) \left(\frac{1}{R_1} + \frac{1}{R_2} \right)$$

(B) $R \left(1 - \frac{\theta}{2\pi} \right)$

(D) $\frac{R}{4\pi^2} (2\pi - \theta)\theta$

$\frac{(2\pi - \theta)R}{2\pi r}$

(C) $\frac{R(2\pi - \theta)}{4\pi}$

$\frac{(2\pi - \theta)R}{4\pi}$

$\frac{(2\pi - \theta)R}{2\pi r}$

Two wires of equal length and equal diameter and having resistivities ρ_1 and ρ_2 are connected in series. The equivalent resistivity of the combination is _____.

$$\frac{\rho_1 \theta}{2\pi} + \frac{(2\pi - \theta)R}{2\pi r}$$

(A) $(\rho_1 + \rho_2)$

(B) $\frac{\rho_1 \rho_2}{\rho_1 + \rho_2}$

$l_1 = l_2$

$\frac{\rho_1 \theta \times (2\pi r - \theta R)}{4\pi^2 r^2}$

(C) $\frac{\rho_1 + \rho_2}{2}$

(D) $\sqrt{\rho_1 \rho_2}$

$d_1 = d_2$

$\frac{\rho_1 \theta + 2\pi r - \theta R}{2\pi r}$

$\frac{\rho_1 \theta}{2\pi}$

$A_1 = A_2$

$2R^2 \theta \frac{2\pi r}{\pi} - \theta^2 R^2$

$\frac{2\pi}{R\theta} + \frac{2\pi r}{(2\pi - \theta)R} = \frac{1}{R}$

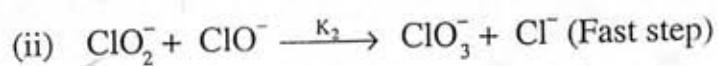
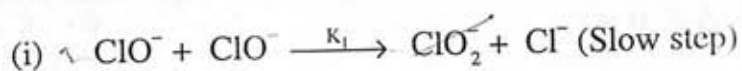
$\rho_1 \neq \rho_2$

(Space for Rough Work) $R_1 = \rho_1 l/A$
 $R_2 = \rho_2 l/A$

$\frac{\rho_1 l}{A} + \frac{\rho_2 l}{A}$

CHEMISTRY

41) Reaction $3\text{ClO}^- \rightarrow \text{ClO}_3^- + 2\text{Cl}^-$ occurs in following two steps.



then the rate of given reaction = _____.

~~(A)~~ $K_1 [\text{ClO}^-]^2$

(B) $K_2 [\text{ClO}_2^-] [\text{ClO}^-]$

(C) $K_1 [\text{ClO}^-]$

(D) $K_2 [\text{ClO}^-]^3$

42) At given temperature and pressure adsorption of which gas of the following will take place the most?

(A) Di hydrogen

(B) Ammonia

(C) Di oxygen

(D) Di nitrogen

43) Which type of colloid is the dissolution of sulphur (S_8)?

(A) Associated colloid

(B) Multimolecular colloid

(C) Micelle

(D) Macromolecular colloid

44) For Adsorption phenomenon,

(A) $\Delta H = +ve, \Delta S = -ve$

(B) $\Delta H = -ve, \Delta S = -ve$

(C) $\Delta H = -ve, \Delta S = +ve$

(D) $\Delta H = +ve, \Delta S = +ve$

(Space for Rough Work)

14

23

$$\Delta G = \frac{\Delta H}{(-ve)} - T \frac{\Delta S}{(-ve)}$$

- 45) Which of the following statement is incorrect for KMnO_4 ?
- (A) It is an oxidising agent. ✓
- (B) It is used as bleaching agent in textile industries. ✓
- (C) It is used as antiseptic. ✓
- (D) It is dark purple coloured amorphous substance.

- 46) Which of the following ion has the maximum theoretical magnetic moment?

- ✓(A) Fe^{3+} $26 - 23 = 23$
- (B) Ti^{3+} $(22) = 19$
- (C) Cr^{3+} $24 = 21$
- (D) Co^{3+} $27 = 24$

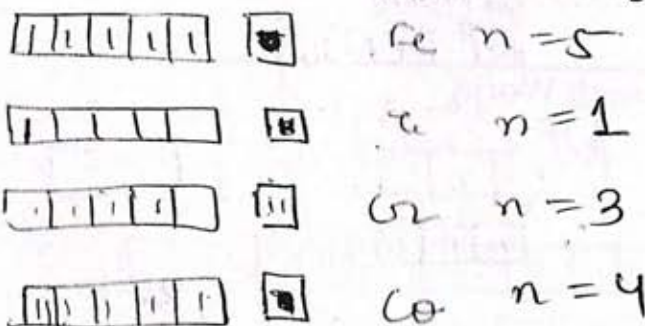
- 47) Which of the following oxide has the maximum basicity?

- (A) La_2O_3
- (B) Sm_2O_3
- (C) Pr_2O_3
- (D) Gd_2O_3

- 48) Which of the following spectrochemical series is true?

- (A) $\text{SCN}^- < \text{NH}_3 < \text{F}^- < \text{en} < \text{CO}$
- (B) $\text{SCN}^- < \text{F}^- < \text{en} < \text{NH}_3 < \text{CO}$
- (C) $\text{SCN}^- < \text{F}^- < \text{NH}_3 < \text{en} < \text{CO}$
- (D) $\text{SCN}^- < \text{F}^- < \text{en} < \text{CO} < \text{NH}_3$

(Space for Rough Work)



49) Which of the following complex is paramagnetic?

- (A) $[\text{Ni}(\text{CO})_4]$ (B) $[\text{Ni}(\text{CN})_4]^{2-}$
 (C) $[\text{Co}(\text{NH}_3)_6]^{3+}$ (D) $[\text{NiCl}_4]^{2-}$

50) Both $[\text{Ni}(\text{CO})_4]$ and $[\text{Ni}(\text{CN})_4]^{2-}$ are diamagnetic. The types of hybridisation of Ni in these complexes are _____ & _____ respectively.

- (A) sp^3, sp^3 (B) dsp^2, sp^3
 (C) sp^3, dsp^2 (D) dsp^2, dsp^2

51) Which of the following order of acidic strength is not correct?

- (A) $\text{Cl}_3\text{C}\cdot\text{COOH} > \text{Cl}_2\text{CH}\cdot\text{COOH} > \text{Cl}\cdot\text{CH}_2\cdot\text{COOH}$
 (B) $\text{H}\cdot\text{COOH} > \text{CH}_3\text{COOH} > \text{C}_6\text{H}_5\text{COOH}$
 (C) $\text{CH}_3\cdot\text{CH}_2\cdot\text{CH}\cdot\text{COOH} > \text{CH}_3\cdot\text{CH}\cdot\text{CH}_2\cdot\text{COOH} > \text{CH}_2\cdot\text{CH}_2\cdot\text{CH}_2\cdot\text{COOH}$
 (D) $\text{CH}_3\text{COOH} > \text{CH}_3\cdot\text{CH}_2\cdot\text{COOH} > (\text{CH}_3)_2\text{CH}\cdot\text{COOH}$

52) What is the formula of Acrolein?

- (A) $\text{CH}_2 = \text{CH} - \text{CHO}$
 (B) $\text{CH}_2 = \text{CH} - \text{COOH}$
 (C) $\text{CH}_2 = \text{CH} - \text{CN}$
 (D) $\text{CH}_2 = \text{CH} - \text{CONH}_2$

2 3 1 allyl
2 1 3

d s p
 (Space for Rough Work)

$[\text{Ni}^0(\text{CN})_4]^{2-}$

+2 d s p

(28) d^2sp^2

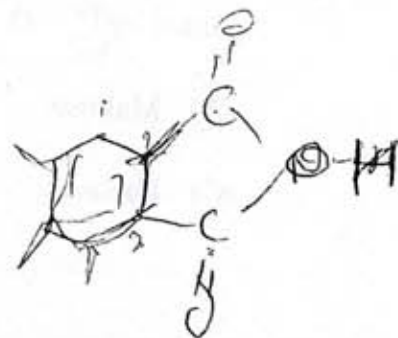
$\text{Ni}^0(\text{CO})_4$ d^2sp^2

20 sp^3 [20]

Handwritten orbital diagrams for $[\text{Ni}^0(\text{CN})_4]^{2-}$ and $\text{Ni}^0(\text{CO})_4$ are shown, illustrating the hybridization of Ni orbitals. For $[\text{Ni}^0(\text{CN})_4]^{2-}$, the Ni atom is in a 0 oxidation state, and the complex is diamagnetic. The diagram shows the filling of 5 d-orbitals, 1 s-orbital, and 3 p-orbitals, with 2 electrons in the d-orbitals and 6 electrons in the sp³ hybrid orbitals. For $\text{Ni}^0(\text{CO})_4$, the Ni atom is in a 0 oxidation state, and the complex is diamagnetic. The diagram shows the filling of 5 d-orbitals, 1 s-orbital, and 3 p-orbitals, with 2 electrons in the d-orbitals and 6 electrons in the sp³ hybrid orbitals.

53) What is IUPAC name for isophthalic acid?

- (A) Benzene - 1, 3 dicarboxylic acid
- (B) Benzene - 1, 4 dicarboxylic acid
- (C) Benzene - 1, 2 dicarboxylic acid
- (D) Benzene - 1, 5 dicarboxylic acid



54) What is the name for red azo dye?

- (A) p - hydroxy azo benzene
- (B) p - amino azo benzene
- (C) β - naphthyl azo benzene
- (D) p - N, N dimethyl amino azo benzene

55) Which of the following is not formed by Sandmeyer reaction?

- (A) C_6H_5Cl
- (B) C_6H_5Br
- (C) C_6H_5I
- (D) C_6H_5CN

56) For which vitamin liver is not the source?

- (A) Vitamin - B_1
- (B) Vitamin - B_{12}
- (C) Vitamin - B_2
- (D) Vitamin - H

(Space for Rough Work)

57) In which of the following compound, all the monosaccharide units are not joined by $C_1 - O - C_4$ chain.

(A) Maltose

(B) Cellulose

(C) Lactose

(D) Amylopectin

58) Which of the following polymer is formed by cationic addition polymerisation reaction?

(A) Butyl rubber

(B) Teflon

(C) Poly styrene

(D) PVC

59) Which of the following polymer is used in pigment?

(A) Buna - S

(B) Teflon

(C) Neoprene

(D) Orlon

60) To prevent food from spoilage by microorganism, which substance is used?

(A) Aspartame

(B) Salt of sorbic acid

(C) Arneto

(D) Tetrazine

(Space for Rough Work)

- 61) Which of the following defect is seen in FeO?
- (A) Metal excess defect
 ✓(B) Displacement defect
 (C) Metal deficiency defect
 (D) Impurity defect
- 62) Which of the following substance possess antiferromagnetic property?
- (A) Fe_3O_4 (B) H_2O
 (C) CrO_2 (D) MnO
- 63) The boiling points for aqueous solutions of sucrose and urea are same at constant temperature. If 3 gm of urea is dissolved in its 1 litre solution, what is the weight of sucrose dissolved in its 1 litre solution?
 [Urea - 60 gm/mole, sucrose = 342 gm/mole]
- (A) 3.0 gram (B) 6.0 gram
 (C) 17.1 gram (D) 34.2 gram
- 64) Which option is inconsistent for Raoult's law?
- (A) Volume of liquid solvent + volume of liquid solute = volume of solution.
 (B) Solute does not undergo association in solution
 (C) The change in heat of dilution for solution = 0
 (D) Solute undergoes dissociation in solution

(Space for Rough Work)

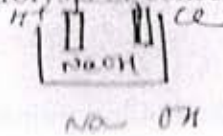
$$\frac{\pi}{3/60} = \frac{\pi}{x/342}$$

$$\frac{3}{60} = x/342$$

65) Which colligative property is more useful to determine the molecular weight of the substances like proteins and polymers?

- (A) Lowering of vapour pressure
- (B) Depression of freezing point
- (C) Elevation in boiling point
- (D) Osmotic pressure

66) The resulting solution obtained at the end of electrolysis of concentrated aqueous solution of NaCl _____.



- (A) turns red litmus into blue
- (B) remains colourless with phenolphthalein
- (C) turns blue litmus into red
- (D) the colour of red or blue litmus does not change

67) The value of E_{red}° for metal A, B and C are 0.34 Volt, -0.80 Volt and -0.46 Volt respectively. State the correct order for their ability to act as reducing agent.



- (A) $C > B > A$
- (B) $B > C > A$
- (C) $A > B > C$
- (D) $C > A > B$

68) Two electrolytic cells containing molten solutions of Nickel chloride & Aluminium chloride are connected in series. If same amount of electric current is passed through them, what will be the weight of Nickel obtained when 18 gm of Aluminium is obtained? (Al - 27 gm/mole, Ni - 58.5 gm/mole⁻¹)

- (A) 58.5 gm
- 13 (B) 29.25 gm 28
- (C) 117 gm
- (D) 5.85 gm

(Space for Rough Work)

Conc. aq NaCl

& H⁺

A → 0.34
B → -0.8
C → -0.46

B < C < A

$g = 27I$

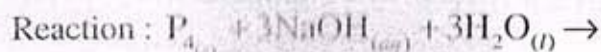
$m = ZIt$
 $m = (58.5) \times \frac{18}{27}$
Ni

NiCl₂
AlCl₃

69) Which method is used to get very pure germanium (used in semiconductor)?

- (A) electrolysis
- (B) liquation
- (C) vapour - phase refining
- (D) zone refining ✓

70) Which product will be obtained in the following reaction?



- (A) $PH_{3(g)} + 3Na_2HPO_{3(aq)}$
- (B) $2PH_{3(g)} + 3Na_2HPO_{2(aq)}$
- (C) $PH_{3(g)} + 3NaH_2PO_{2(aq)}$
- (D) $2PH_{3(g)} + 3NaH_2PO_{2(aq)}$

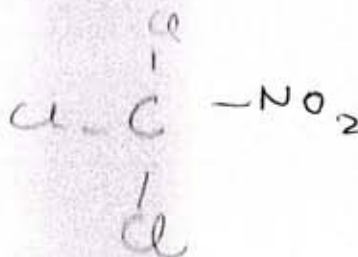
71) The molecular formulae for phosgene and tear gas are _____ and _____ respectively.

- (A) $SOCl_2$ and CCl_3NO_2
- (B) ✓ $COCl_2$ and CCl_3NO_2
- (C) $COCl_2$ and CCl_3NO_2
- (D) $SOCl_2$ and CCl_3NO_2

72) Which of the following mixture is called Aquaregia?

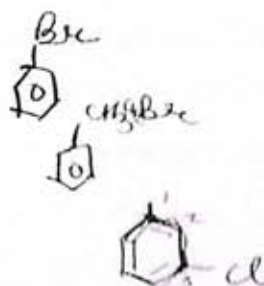
- (A) Two parts of conc. HCl and two parts of conc. HNO_3
- (B) ✓ Three parts of conc. HCl and 1 part of dil. HNO_3
- (C) Three parts of dil. HCl and 1 part of conc. HNO_3
- (D) Three parts of conc. HCl and 1 part of conc. HNO_3

(Space for Rough Work)



73) Which of the following is allylic halide?

- (A) Benzyl chloride
(B) 1 - bromo benzene
(C) (1 - bromo ethyl) benzene
(D) 3 - chloro cyclo hex-1-ene



74) 50% of the reagent is used for dehydrohalogenation of 6.45 gm $\text{CH}_3\text{CH}_2\text{Cl}$. What will be the weight of the main product obtained?

[At. mass of H, C and Cl are 1, 12 & 35.5 gm/mole⁻¹ respectively]

- (A) 0.7 gm (B) 2.8 gm
(C) 1.4 gm (D) 5.6 gm

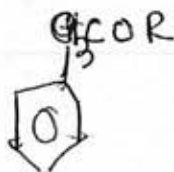
75) Name the following reaction $\text{CH}_3\text{CH}_2\text{Cl} + \text{NaI} \xrightarrow{\text{acetone}} \text{CH}_3\text{CH}_2\text{I} + \text{NaCl}$

- (A) Swartz reaction
(B) Wurtz reaction
(C) Finkelstein reaction
(D) Hell-Volhard Zelinsky reaction

76) Which reagent is used for bromination of methyl phenyl ether?

- (A) $\text{Br}_2 / \text{Red P}$
(B) $\text{Br}_2 / \text{FeBr}_3$
(C) $\text{Br}_2 / \text{CH}_3\text{COOH}$
(D) HBr / Δ

(Space for Rough Work)

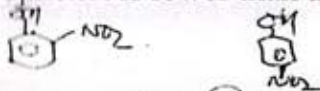


77) Which of the following acid does not have $-\text{COOH}$ group?

- (A) Ethanoic acid ✓ ✓ (B) Benzoic acid
(C) Picric acid ✓ (D) Salicylic acid

78) Which of the following statement is not correct?

- (A) Phenol is used to prepare analgesic drugs
(B) Solubility of phenol in water is more than that of chlorobenzene
(C) Phenol is neutralised by sodium carbonate Na_2CO_3
✓ (D) Boiling point of o-nitrophenol is lower than that of p-nitrophenol o < m p



79) Total order of reaction $X + Y \rightarrow XY$ is 3. The order of reaction with respect to X is 2. State the differential rate equation for the reaction.

- (A) $-\frac{d[X]}{dt} = K[X]^1[Y]^0$ ✓ (B) $-\frac{d[X]}{dt} = K[X]^2[Y]$
(C) $-\frac{d[X]}{dt} = K[X]^1[Y]^1$ (D) $-\frac{d[X]}{dt} = K[X][Y]^2$

80) $X \xrightarrow{\text{Step-I}} Y \xrightarrow{\text{Step-II}} Z$ is a complex reaction. Total order of reaction is 2 and Step - II is slow step. What is molecularity of Step-II?

- (A) 1 (B) 3
✓ (C) 2 (D) 4

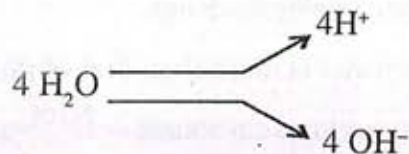
(Space for Rough Work)

BIOLOGY

81) Which one is not cranial bone?

- (A) Frontal (B) Temporal
(C) Zygomatic (D) Sphenoid

82)

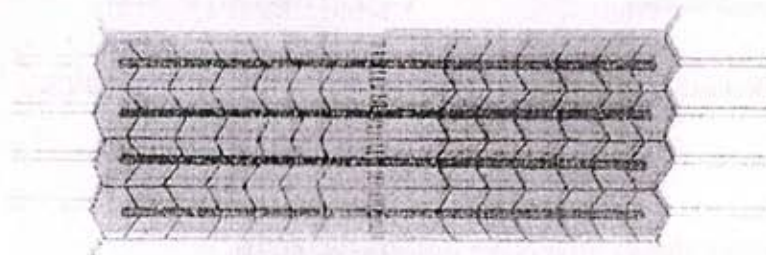


In this process which of the following play important role?

- (A) Chlorophyll (B) Light energy
(C) Ca⁺⁺, Mn⁺⁺, Cl⁻ (D) All of the above
- 83) Which of the following is correct trend of succession in Hydrosere succession?
- (A) Phytoplankton → Rooted submerged → Reed swamp → Sedge meadow
(B) Phytoplankton → Sedge meadow → Reed swamp → Root submerged
(C) Phytoplankton → Reed swamp → Rooted submerged → Sedge meadow
(D) Rooted submerged → Phytoplankton → Reed swamp → Sedge meadow

(Space for Rough Work)

- 84) On which surface of cell Donnan equilibrium occur?
- (A) Cell wall (B) Plasma membrane
(C) Tonoplast (D) Nuclear membrane
- 85) Which type of gene regulate sex-determination in Spinach plant?
- (A) Homozygous genes (B) Single gene
(C) Heterozygous genes (D) Multiple genes
- 86) When the respiratory substances are more than one then which respiratory substrates are not used?
- (A) Pure Protein (B) Lipid
(C) Carbohydrate (D) (A) and (B) both
- 87) State the condition of muscle contraction in following diagram.



- (A) Resting potential (B) Contraction
(C) Maximally contracted (D) None

(Space for Rough Work)

88) How many years are considered in one minute in Geological clock?

- (A) 52000 years ✓(B) 3,25,000 years
(C) 1,87,500,000 years (D) 1,90,000 years

89) Which structure is formed at the time of exchange of gamete nuclei in given animal during sexual reproduction.



- (A) Plasmodesmata ✓(B) Internal tubule
(C) Cytoplasmic filaments (D) Cytoplasmic bridge

90) Name the plant shows adventive embryonic cells.

- (A) Sunflower and Mango (B) Lemon and Maize
(C) Citrus and Mango (D) Lemon and Palms

(Space for Rough Work)

- 91) During respiration _____
- (A) 2 PGAL during glycolysis and none of the PGAL produced in Kreb's cycle
 - (B) 2 PGAL during glycolysis and 2 Pyruvic acid are produced in Kreb's cycle
 - (C) 2 PGAL during glycolysis and 4 Pyruvic acid are produced in Kreb's cycle
 - (D) PGAL is not produced during respiratory events
- 92) Which of the following function is performed by collecting tubule of kidney?
- (A) In the maintenance of pH and ionic balance of blood by the secretion of H^+ and K^+ ions
 - (B) Maintenance of pH of blood and removal of Na^+ and K^+ ions
 - (C) Absorption of glucose and ammonia from the blood
 - (D) None of above
- 93) A - Nerve fibre can become excited through touch, smell, pressure and chemical changes and there is a change in polarity.
R - It is called active potential.
- (A) A and R both are correct and A is correct explanation of R.
 - (B) A is correct and R is wrong
 - (C) A and R both are correct but A is not correct explanation of R.
 - (D) A is wrong and R is correct

(Space for Rough Work)

94) Select proper option, by matching column I, II and III.

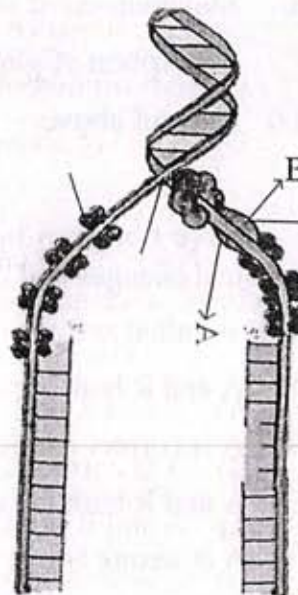
Column I (Common Name)	Column II (Roman Numerical Designation)	Column III (Activation product)
---------------------------	--	------------------------------------

P) Prothrombin	x) I	i) Convertin
Q) Proconvertin	y) V	ii) Fibrin
R) Fibrinogen	z) II	iii) Thrombin
S) Proaccelerin	w) VII	iv) Accelerin

- (A) (P - z - iii) (Q - w - i) (R - y - ii) (S - x - iv)
 (B) (P - z - iii) (Q - w - ii) (R - x - iv) (S - y - i)
 (C) (P - w - ii) (Q - z - iii) (R - y - iv) (S - x - i)
 (D) (P - z - iii) (Q - w - i) (R - x - ii) (S - y - iv)

95) What is "A" and "B" in given diagram?

- (A) A = RNA Primer
 B = RNA Helicase
 (B) A = Single strand Binding Protein
 B = DNA Helicase
 (C) A = RNA Primer
 B = DNA Helicase
 (D) A = Lagging strand
 B = Movement of Helicase

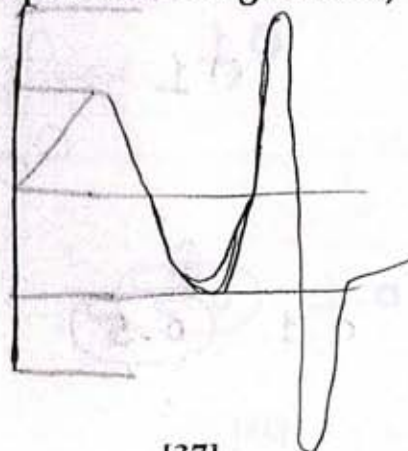


(Space for Rough Work)

- 96) In which field application of biotechnology occurs?
 (A) Bio-medicine
 (B) Agriculture
 (C) Environmental field
 (D) All of the above
- 97) _____ shows anti-allergic and anti-inflammatory effect.
 (A) Mineralocorticoids
 (B) Sexcorticoids
 (C) Glucocorticoids
 (D) Noradrenaline
- 98) During the process of decomposition in which stage complex organic matter convert into inorganic ions and salts by fungi?
 (A) Mineralization
 (B) Catabolism
 (C) Fragmentation
 (D) All of the above
- 99) How much amount of volume of air is in lungs FRC?
 (A) 1500 ml to 1600 ml
 (B) 2500 ml to 3000 ml
 (C) 2100 ml to 2500 ml
 (D) 1600 ml to 2100 ml

(Space for Rough Work)

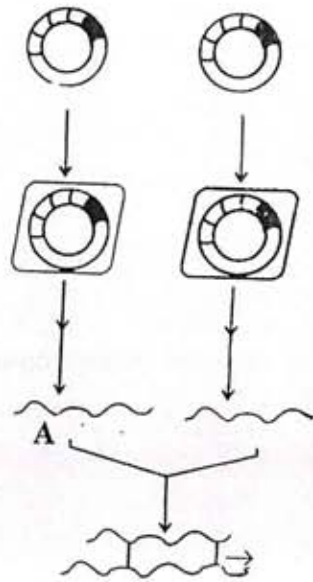
FRC



$E V + R V$

$1100 - 100 + 8$

100) What indicated "A" in given figure?



- (A) Peptide bond
 (B) Disulfide bond
 (C) Glycosidic bond
 (D) Hydrophobic bond

101) What is total diastolic time of ventricle in cardiac cycle?

- (A) 0.30 second
 (B) 0.50 second
 (C) 0.40 second
 (D) 0.10 second

102) Which amino acid determines by four genetic codes?

- (A) Leucine (Leu) γ
 (B) Serine (Ser)
 (C) Proline (Pro)
 (D) Tyrosine (Tyr)

(Space for Rough Work)

0.1 0.4
 0.1
 0.1 0.5

103) Which is the inhibitory hormone of GH?

- (A) Insulin
- ✓(B) Somatostatin
- (C) Parathormone
- (D) Testosterone

104) Complete and balanced the following reaction.



- (A) $\text{X} = \text{NaHCO}_3, \text{Y} = \text{NaCl}$
- (B) $\text{X} = \text{NaHCO}_3, \text{Y} = \text{H}_2\text{CO}_3$
- (C) $\text{X} = \text{H}_2\text{CO}_3^-, \text{Y} = \text{NaH}_2\text{CO}_3$
- (D) $\text{X} = \text{H}_2\text{CO}_3, \text{Y} = \text{NaHCO}_3$

NaH

105) How many molecules of ATP and NADPH are require in formation of two molecules of glucose? How many Calvin cycles are required?

- (A) 36 ATP, 24 NADPH, 12 Calvin cycles ✓
- (B) 36 ATP, 24 NADPH, 6 Calvin cycles
- (C) 18 ATP, 12 NADPH, 6 Calvin cycles
- (D) 24 ATP, 36 NADPH, 12 Calvin cycles ✓

(Space for Rough Work)

3 Calvin	} 1 glucose	$\frac{18}{3} = 6$	$\frac{12}{3} = 4$
6 ATP			
4 NADP			
6		3	4
12		3	1
8			8
			12

106) A - The DNA fingerprint is the same for every cell, tissue and organ of a person.

R - DNA fingerprint is used for treatment of inherited disorders like Huntington's disease, Alzheimer's and Sickle cell anemia.

(A) A and R both are correct. R is explanation of A

(B) A is correct and R is wrong

(C) A and R both are correct but R is not explanation of A

(D) A is wrong and R is correct

107) Which part is not included in Cochlear duct?

(A) Reissner's membrane

(B) Scala Media

(C) Macula of Utricle

(D) Tectorial membrane

108) Which is Gynandromorph type of animal?

(A) Drosophilla

(B) Beetles

(C) Silk worms

(D) All of the above

109) DNA polymerase enzyme is isolated from which bacteria?

(A) E.Coli

(B) Bacillus thuringiensis

(C) Thermus aquaticus

(D) Agro bacterium

(Space for Rough Work)

110) Match the column I, II and III

Column I	Column II	Column III
P) Trichomoniasis	i) Herpes Simplex	x) Pain in lower abdomen
Q) Syphilis	ii) Neisseria gonorrhoeae	y) Inflammation and itching in and around vagina
R) Gonorrhoea	iii) Treponema Pallidum	z) Patchy hair loss
S) Genital herpes	iv) Trichomonas Vaginalis	w) Feeling of uneasiness

(A) (P - iv - y) (Q - iii - z) (R - ii - x) (S - i - w)

(B) (P - iv - x) (Q - i - w) (R - ii - y) (S - iii - z)

(C) (P - iv - y) (Q - i - z) (R - ii - x) (S - iii - w)

(D) (P - i - z) (Q - ii - y) (R - iv - w) (S - iii - x)

111) What is the height and weight of twelve weeks old human embryo?

(A) 7.5 cm, 650 gram (B) 42 cm, 1800 gram

(C) 7.5 cm, 14 gram (D) 32 cm, 650 gram

$$\frac{12}{4} = 3 \text{ months}$$

3

(Space for Rough Work)

112) Assertion A : Restriction endonuclease recognize short palindromic sequence and cut at specific sites.

Reason - R : When a restriction endonuclease acts on Palindrome, it cleaves both the strands of DNA molecule.

- (A) A and R are both correct. R is explanation of A
(B) A is correct and R is wrong
(C) A and R are both correct but R is not explanation of A
(D) A is wrong and R is correct

113) Write proper option by matching column I, II and III.

Column I (Name)	Column II (Enzyme)	Column III (Function)
i) Gastric Juice	P) Chymo- trypsinogen	A) Dipeptide convert into amino acid
ii) Intestinal Juice	Q) Ptylin	B) Proteoses convert into small polypeptides
iii) Saliva	R) Renin	C) Casein convert into paracasein
iv) Pancreatic juice	S) Erepsin	D) Conversion of starch into maltose

- (A) (i - R - C) (ii - S - A) (iii - Q - B) (iv - P - D)
(B) (i - S - D) (ii - R - C) (iii - P - B) (iv - Q - A) \varnothing
(C) (i - R - C) (ii - S - A) (iii - Q - D) (iv - P - B) \checkmark
(D) (i - Q - A) (ii - P - C) (iii - R - B) (iv - S - D) \varnothing

(Space for Rough Work)

114) Write the correct sequence of genetic diversity

- (A) Kingdom → Population → Species → Genes → Chromosome
→ Nucleotides
- (B) Species → Genes → Population → Chromosomes → Nucleotides
- (C) Population → Species → Chromosomes → Genes → Nucleotides
- (D) Kingdom → Species → Chromosomes → Genes → Nucleotides

115) Match the column I and II and select the correct option.

Column I			Column II (concentration of DDT in ppm)		
A) Zooto Plankton			P) 0.003 ppm		
B) Small fishes			Q) 2 ppm		
C) Water			R) 25 ppm		
D) Fish eating birds			S) 0.04 ppm		
E) Big fishes			T) 0.5 ppm		
A	B	C	D	E	
(A) S	T	P	R	Q	
(B) S	T	R	Q	P	
(C) S	T	P	Q	R	
(D) Q	P	S	T	R	

(Space for Rough Work)

116) Which of the following disease shows the blockage of kidney tubules and causes severe back pain?

- (A) Renal calculi
- (B) Uremia
- (C) Kidney failure
- (D) Nephritis

117) During photorespiration which compounds are formed having 2C and 3C respectively in Peroxisome?

2C 3C

- (A) Glycolate, Glycine ~~✓~~
- (B) Serine, Glycine ~~✓~~
- (C) Glycine, Glycerate
- (D) Phosphoglycerate, Glycolate

118) During rainy season wooden doors and windows are not properly closed. Why?

- (A) Plasmolysis
- (B) Osmosis
- (C) Diffusion
- ~~(D) Imbibition~~

(Space for Rough Work)

119) Match the column I, II and III

Column I	Column II	Column III
A) Sickle Cell Anaemia	i) Due to recessive PP genes	P) Arrangement of Valine in place of Glutamic acid
B) Phenyl Ketonuria	ii) Due to absence of homogentisic oxidase enzyme	Q) Inborn error of metabolism
C) Alkaptonuria	iii) Follows Mendelian Principles	R) Urine turns black when exposed to air
D) Thalassaemia	iv) Characters caused by homozygous recessive genes	S) The required haemoglobin is not generated in the blood

- (A) (A - ii - S) (B - iii - R) (C - i - Q) (D - iv - P) ✗
(B) (A - iv - P) (B - iii - R) (C - i - S) (D - ii - R) ✗
(C) (A - iv - P) (B - i - Q) (C - ii - R) (D - iii - S) ✓
(D) (A - iii - R) (B - i - Q) (C - iv - P) (D - ii - S) ✗

120) Which of the following is the symptom of Ulcerative colitis?

- (A) Watery stools containing blood and mucus
(B) Loss of appetite
(C) Difficulty in swallowing ✓
(D) Eyes turn yellow ✓

(Space for Rough Work)