



Exam : 1Z0-007

Title : Introduction to Oracle9i: SQL

Ver : 12.08.06

QUESTION 1:

Examine the data in the EMPLOYEES and DEPARTMENTS tables.

EMPLOYEES

LAST_NAME	DEPARTMENT_ID	SALARY
Getz	10	3000
Davis	20	1500
Bill	20	2200
Davis	30	5000
Kochhar		5000

DEPARTMENTS

DEPARTMENT_ID	DEPARTMENT_NAME
10	Sales
20	Marketing
30	Accounts
40	Administration

You want to retrieve all employees, whether or not they have matching departments in the departments table. Which query would you use?

- A. SELECT last_name, department_name
FROM employees , departments(+);
- B. SELECT last_name, department_name
FROM employees JOIN departments(+);
- C. SELECT last_name, department_name
ON (e. department_id = d. departments_id);
FROM employees(+) e JOIN departments d
- D. SELECT last_name, department_name
FROM employees e
RIGHT OUTER JOIN departments d ON (e.department_id = d.department_id);
- E. SELECT last_name, department_name
FROM employees(+) , departments
ON (e. department_id = d. department_id);
- F. SELECT last_name, department_name
FROM employees e LEFT OUTER
JOIN departments d ON (e. department_id = d. department_id);

Answer: F

Explanation:

Answer F is correct. This query shows correct syntax to retrieve all employees, whether or not they have matching departments in the department table. Oracle9i extends its compliance with ANSI/ISO by supporting

that standard's requirements for outer join syntax and semantics.

Incorrect Answers

A: This query uses "+" to create outer join as it was in Oracle8i, but it requires also usage of WHERE clause in SELECT statement.

B: The JOIN clause cannot be used in conjunction with "+": syntax is incorrect.

C: The JOIN clause cannot be used in conjunction with "+": syntax is incorrect.

D: This statement requires LEFT OUTER JOIN, not RIGHT OUTER JOIN.

E: This query uses incorrect syntax with "+" and ON to create outer join.

OCP Introduction to Oracle 9i: SQL Exam Guide, Jason Couchman, p. 112-114

Chapter 3: Advanced Data Selection in Oracle

QUESTION 2:

Examine the structure of the EMPLOYEES table:

EMPLOYEE_ID NUMBER Primary Key

FIRST_NAME VARCHAR2(25)

LAST_NAME VARCHAR2(25)

Which three statements inserts a row into the table? (Choose three)

A. INSERT INTO employees

VALUES (NULL, 'JOHN','Smith');

B. INSERT INTO employees(first_name, last_name)

VALUES ('JOHN','Smith');

C. INSERT INTO employees

VALUES ('1000','JOHN','NULL');

D. INSERT INTO employees(first_name,last_name, employee_id)

VALUES ('1000, 'john','Smith');

E. INSERT INTO employees (employee_id)

VALUES (1000);

F. INSERT INTO employees (employee_id, first_name, last_name)

VALUES (1000, 'john','');

Answer: C, E, F

Explanation:

Since EMPLOYEE_ID column is used as primary key, it cannot be NULL, so only INSERT statements in C, E and F are correct. You can insert the row with NULL LAST_NAME as in answer C, or only the row with EMPLOYEE_ID as in answer E, or the row with empty LAST_NAME column.

Incorrect Answers

A: This answer is incorrect because a primary key cannot be NULL.

B: INSERT statement does not contain primary key value at all, so this answer needs to be eliminated as correct one.

D: This statement shows incorrect order of columns of row which needs to be inserted into the table.

OCP Introduction to Oracle 9i: SQL Exam Guide, Jason Couchman, p. 260-267

Chapter 6: Manipulating Oracle Data

QUESTION 3:

You need to give the MANAGER role the ability to select from, insert into, and modify existing rows in the STUDENT_GRADES table. Anyone given this MANAGER role should be able to pass those privileges on to others.

Which statement accomplishes this?

- A. GRANT select, insert, update
ON student_grades
TO manager
- B. GRANT select, insert, update
ON student_grades
TO ROLE manager
- C. GRANT select, insert, modify
ON student_grades
TO manager
WITH GRANT OPTION;
- D. GRANT select, insert, update
ON student_grades
TO manager
WITH GRANT OPTION;
- E. GRANT select, insert, update
ON student_grades
TO ROLE manager
WITH GRANT OPTION;
- F. F.GRANT select, insert, modify
ON student_grades
TO ROLE manager
WITH GRANT OPTION;

Answer: D

Explanation:

This answer provides correct syntax of GRANT command to give the MANAGER role all asked privileges. Clause WITH GRANT OPTION will allow this role to pass those privileges on to others.

Incorrect Answers

- A: This statement would be correct if it included WITH GRANT OPTION clause to allow this role to pass those privileges on to others.
- B: This statement uses incorrect clause TO ROLE.
- C: There is no option with name MODIFY in the GRANT command.
- E: This statement uses incorrect clause TO ROLE.
- F: There is no option with name MODIFY in the GRANT command. And this statement also uses incorrect clause TO ROLE.

OCP Introduction to Oracle 9i: SQL Exam Guide, Jason Couchman, p. 356-365
Chapter 8: User Access Control in Oracle

QUESTION 4:

Examine the data in the EMPLOYEES table:

LAST_NAME	DEPARTMENT_ID	SALARY
Getz	10	3000
Davis	20	1500
Bill	20	2200
Davis	30	5000
...		

Which three subqueries work? (Choose three)

- A. SELECT *
FROM employees
where salary > (SELECT MIN(salary)
FROM employees
GROUP BY department _ id);
- B. SELECT *
FROM employees
WHERE salary = (SELECT AVG(salary)
FROM employees
GROUP BY department _ id);
- C. SELECT distinct department_id
FROM employees
Where salary > ANY (SELECT AVG(salary)
FROM employees
GROUP BY department _ id);
- D. SELECT department_id
FROM employees
WHERE SALARY > ALL (SELECT AVG(salary)
FROM employees
GROUP BY department _ id);
- E. SELECT last_name
FROM employees
Where salary > ANY (SELECT MAX(salary)
FROM employees
GROUP BY department _ id);
- F. SELECT department_id
FROM employees
WHERE salary > ALL (SELECT AVG(salary)
FROM employees
GROUP BY ANG (SALARY));

Answer: C, D, E

Explanation:

These answers show correct syntax, because they use ANY and ALL keywords for convert multi-row output of sub-query to one-row result.

Incorrect Answers

A: This SELECT statement is incorrect because of multi-row return of sub-query: it will return minimal salary for EACH department.

B: This SELECT statement is incorrect because of multi-row return of sub-query: it will return average salary for EACH department.

F: This SELECT statement is incorrect because GROUP BY clause cannot contain functions, like AVG(), MIN(), MAX() and so on.

OCP Introduction to Oracle 9i: SQL Exam Guide, Jason Couchman, p. 145-156

Chapter 4: Subqueries

QUESTION 5:

The database administrator of your company created a public synonym called HR for the HUMAN_RESOURCES table of the GENERAL schema, because many users frequently use this table. As a user of the database, you created a table called HR in your schema. What happens when you execute this query?

```
SELECT *  
FROM HR;
```

- A. You obtain the results retrieved from the public synonym HR created by the database administrator.
- B. You obtain the results retrieved from the HR table that belongs to your schema.
- C. You get an error message because you cannot retrieve from a table that has the same name as a public synonym.
- D. You obtain the results retrieved from both the public synonym HR and the HR table that belongs to your schema, as a Cartesian product.
- E. You obtain the results retrieved from both the public synonym HR and the HR table that belongs to your schema, as a FULL JOIN.

Answer: B

Explanation:

By executing this query you will extract data from the HR table in your own schema, it will not work with HR synonym for the HUMAN_RESOURCES table of the GENERAL schema.

Incorrect Answers

A: The results will be retrieved from the table in your own schema, not from the GENERAL schema, using synonym HR.

C: There is no error: data from the table in your own schema will be retrieved by this query.

D: This query will not generate Cartesian product from both tables.

E: This query will not retrieve data from both tables as a FULL JOIN.

OCP Introduction to Oracle 9i: SQL Exam Guide, Jason Couchman, p. 331-335

Chapter 7: Creating Other Database Objects in Oracle

QUESTION 6:

Which two statements about views are true? (Choose two.)

- A. A view can be created as read only.
- B. A view can be created as a join on two or more tables.
- C. A view cannot have an ORDER BY clause in the SELECT statement.
- D. A view cannot be created with a GROUP BY clause in the SELECT statement.
- E. A view must have aliases defined for the column names in the SELECT statement.

Answer: A, B

Explanation:

A view can be created as read only object. However, it is possible to change data in the underlying table(s) with some restrictions. A view also can be created as a join on two or more tables. This type of view is called complex view. Complex views provide complicated data models where many base tables are drawn together into one virtual table.

Incorrect Answers

C: Query operations containing ORDER BY clause are also permitted, so long as the ORDER BY clause appears outside the parentheses. The following is an example of what I mean: CREATE VIEW my_view AS (SELECT * FROM emp) ORDER BY empno.

D: A view can be created with a GROUP BY clause in the SELECT statement.

E: It is not required to have aliases defined for the column names in the SELECT statement.

OCP Introduction to Oracle 9i: SQL Exam Guide, Jason Couchman, p. 292-309

Chapter 7: Creating Other Database Objects in Oracle

QUESTION 7:

Examine the description of the EMPLOYEES table:

```
EMP_ID NUMBER(4) NOT NULL
LAST_NAME VARCHAR2(30) NOT NULL
FIRST_NAME VARCHAR2(30)
DEPT_ID NUMBER(2)
JOB_CAT VARCHAR2(30)
SALARY NUMBER(8,2)
```

Which statement shows the maximum salary paid in each job category of each department?

- A. SELECT dept_id, job_cat, MAX(salary)
FROM employees
WHERE salary > MAX (salary);
- B. SELECT dept_id, job_cat, MAX(salary)
FROM employees
GROUP BY dept_id, job_cat;
- C. SELECT dept_id, job_cat, MAX(salary)
FROM employees;
- D. SELECT dept_id, job_cat, MAX(salary)


```
FROM employees
GROUP BY dept_id;
E. SELECT dept_id, job_cat, MAX(salary)
FROM employees
GROUP BY dept _ id job _ cat salary;
```

Answer: B

Explanation:

This answer provides correct syntax and semantics to show the maximum salary paid in each job category of each department.

Incorrect Answers

A: This query will not return any row because condition `SALARY > MAX(SALARY)` is FALSE.

C: This query will return error because you cannot show maximum salary with `DEPT_ID` and `JOB_CAT` without grouping by these columns.

D: The `GROUP BY` clause is missing `JOB_ID` column.

E: You don't need to group results of query by `SALARY` in the `GROUP BY` column.

OCP Introduction to Oracle 9i: SQL Exam Guide, Jason Couchman, p. 356-365

Chapter 8: User Access Control in Oracle

QUESTION 8:

Management has asked you to calculate the value `12*salary* commission_pct` for all the employees in the EMP table. The EMP table contains these columns:

`LAST NAME` `VARCNAR2(35)` NOT NULL

`SALARY` `NUMBER(9,2)` NOT NULL

`COMMISSION_PCT` `NUMBER(4,2)`

Which statement ensures that a value is displayed in the calculated columns for all employees?

A. `SELECT last_name, 12*salary* commission_pct`

`FROM emp;`

B. `SELECT last_name, 12*salary* (commission_pct,0)`

`FROM emp;`

C. `SELECT last_name, 12*salary*(nvl(commission_pct,0))`

`FROM emp;`

D. `SELECT last_name, 12*salary*(decode(commission_pct,0))`

`FROM emp;`

Answer: C

Explanation:

This SELECT statement provides correct usage of NVL function to calculate columns for all employees. Oracle give you possibility to substitute a value in place of NULL. The basic syntax for NVL() is NVL(column_name, value_if_null). Notice that the column specified in NVL() contains an actual value. That value is what Oracle returns; when the column is NULL, the special string is returned. The value specified to be returned if the column value is NULL must be the same datatype as the column specified.

Incorrect Answers

A: This SELECT statement will return NULL value for rows with NULL COMMISSION_PCT column.

B: It is incorrect syntax in this query: NVL function needs to be used for correct result.

D: The DECODE function is used as substitution of IF-THEN-ELSE PL/SQL construction in SQL queries. The SELECT statement provides incorrect syntax of it cannot have only two parameters.

OCP Introduction to Oracle 9i: SQL Exam Guide, Jason Couchman, p. 31-32

Chapter 1: Overview of Oracle Databases

QUESTION 9:

Which syntax turns an existing constraint on?

A. ALTER TABLE table_name

ENABLE constraint_name;

B. ALTER TABLE table_name

STATUS = ENABLE CONSTRAINT constraint _ name;

C. ALTER TABLE table_name

ENABLE CONSTRAINT constraint _ name;

D. ALTER TABLE table_name

STATUS = ENABLE CONSTRAINT constraint _ name;

E. ALTER TABLE table_name

TURN ON CONSTRAINT constraint _ name;

F. ALTER TABLE table_name

TURN ON CONSTRAINT constraint _ name;

Answer: C

Explanation:

ALTER TABLE statement with ENABLE CONSTRAINT keywords is correct answer to enable an existing constraint.

Incorrect Answers

A: This statement is missing CONSTRAINT keyword.

B: "STATUS =" is incorrect syntax to enable constraint for the table.

D: There is no STATUS keyword in the command to enable constraint.

E: There is no TURN ON keywords in the command to enable constraint.

F: There is no TURN ON keywords in the command to enable constraint.

OCP Introduction to Oracle 9i: SQL Exam Guide, Jason Couchman, p. 239-240

Chapter 5: Creating Oracle Database Objects

QUESTION 10:

Examine the description of the STUDENTS table:

STD_ID NUMBER(4)

COURSE_ID VARCHAR2(10)

START_DATE DATE

END_DATE DATE

Which two aggregate functions are valid on the START_DATE column? (Choose two)

- A. SUM(start_date)
- B. AVG(start_date)
- C. COUNT(start_date)
- D. AVG(start_date, end_date)
- E. MIN(start_date)
- F. MAXIMUM(start_date)

Answer: C, E

Explanation:

It is possible to apply COUNT() and MIN() functions on the column with DATE data type.

Incorrect Answers

A: Function SUM() cannot be used with DATE data type column.

B: Function AVG() cannot be used with DATE data type column.

D: Function AVG() cannot be used with DATE data type column. And function AVG() just has one parameter X, not two. It averages all X column values returned by the SELECT statement.

F: There is no MAXIMUM() function in Oracle, only MAX() function exists.

OCP Introduction to Oracle 9i: SQL Exam Guide, Jason Couchman, p. 81-85

Chapter 2: Limiting, Sorting, and Manipulating Return Data

QUESTION 11:

The EMPLOYEE tables has these columns:

LAST_NAME VARCHAR2(35)

SALARY NUMBER(8,2)

COMMISSION_PCT NUMBER(5,2)

You want to display the name and annual salary multiplied by the commission_pct for all employees. For records that have a NULL commission_pct, a zero must be displayed against the calculated column.

Which SQL statement displays the desired results?

- A. SELECT last_name, (salary * 12) * commission_pct
FROM EMPLOYEES;
- B. SELECT last_name, (salary * 12) * IFNULL(commission_pct, 0)
FROM EMPLOYEES;
- C. SELECT last_name, (salary * 12) * NVL2(commission_pct, 0)
FROM EMPLOYEES;
- D. SELECT last_name, (salary * 12) * NVL(commission_pct, 0)
FROM EMPLOYEES;

Answer: D

Explanation:

This SELECT statement provides correct usage of NVL function to calculate columns for all employees. Oracle give you possibility to substitute a value in place of NULL. The basic syntax for NVL() is NVL(column_name,

value_if_null). Notice that the column specified in NVL() contains an actual value. That value is what Oracle returns; when the column is NULL, the special string is returned. the value specified to be returned if the column value is NULL must be the same datatype as the column specified.

Incorrect Answers

A: This SELECT statement will return NULL value for rows with NULL COMMISSION_PCT column.

B: There is no IFNULL() function in Oracle.

C: The NVL2() function requires 3 parameters, not 2. Function NVL2(expr1, expr2, expr3) returns expr2 if expr1 is not NULL. If expr1 is NULL, it returns expr3.

OCP Introduction to Oracle 9i: SQL Exam Guide, Jason Couchman, p. 31-32

Chapter 1: Overview of Oracle Databases

QUESTION 12:

Examine the data from the ORDERS and CUSTOMERS table.

ORDERS

ORD_ID	ORD_DATE	CUST_ID	ORD_TOTAL
100	12-JAN-2000	15	10000
101	09-MAR-2000	40	8000
102	09-MAR-2000	35	12500
103	15-MAR-2000	15	12000
104	25-JUN-2000	15	6000
105	18-JUL-2000	20	5000
106	18-JUL-2000	35	7000
107	21-JUL-2000	20	6500
108	04-AUG-2000	10	8000

CUSTOMERS

CUST_ID	CUST_NAME	CITY
10	Smith	Los Angeles
15	Bob	San Francisco
20	Martin	Chicago
25	Mary	New York
30	Rina	Chicago
35	Smith	New York
40	Linda	New York

Which SQL statement retrieves the order ID, customer ID, and order total for the orders that are placed on the same day that Martin places his orders?

- A. SELECT ord_id, cust_id, ord_total
FROM orders, customers
WHERE cust_name='Mating'
AND ord _date IN ('18-JUL-2000','21-JUL-2000');
- B. SELECT ord_id, cust_id, ord_total
FROM orders
Where ord_date IN (SELECT ord_date
FROM orders
WHERE cust_id = (SELECT cust_id
FROM customers
WHERE cust_name =
'MARTIN')));
- C. SELECT ord_id, cust_id, ord_total
FROM orders
Where ord_date IN (SELECT ord_date
FROM orders, customers
Where cust _name = 'Martin');
- D. SELECT ord_id, cust_id, ord_total
FROM orders
WHERE cust_id IN (SELECT cust_id
FROM customers
WHERE cust name = 'Martin');

Answer: B

Explanation:

This query will return the order ID, customer ID, and order total for the orders that are placed on the same day that Martin places his orders.

Incorrect Answers

A: This query returns only Martin's orders for July 18, 2000 and July 21, 2002, not orders of others that were placed on the same day that Martin placed his orders.

C: This query uses incorrect sub-query to extract dates when Martin placed his orders.

D: This query will return only Martin's orders.

OCP Introduction to Oracle 9i: SQL Exam Guide, Jason Couchman, p. 145-156

Chapter 4: Subqueries

QUESTION 13:

You need to modify the STUDENTS table to add a primary key on the STUDENT_ID column. The table is currently empty.

Which statement accomplishes this task?

- A. ALTER TABLE students
ADD PRIMARY KEY student_id;
- B. ALTER TABLE students

ADD CONSTRAINT PRIMARY KEY (student _ id);
C. ALTER TABLE students
ADD CONSTRAINT stud_id_pk PRIMARY KEY (student _ id);
D. ALTER TABLE students
ADD CONSTRAINT stud _ id _pk PRIMARY KEY (student _ id);
E. ALTER TABLE students
MODIFY CONSTRAINT stud _ id _pk PRIMARY KEY (student _ id);

Answer: D

Explanation:

This statement provides correct syntax to add a primary key on the STUDENT_ID column of the STUDENT table.

Incorrect Answers

A: This ALTER TABLE statement is missing CONSTRAINT keyword and the name of the constraint.

B: This ALTER TABLE statement is missing the name of the constraint.

C: It's incorrect syntax in the ALTER TABLE command: STUDENT_ID must be used with brackets.

E: We need to add constraint, not to modify existing one. Usage of the MODIFY keyword is incorrect in this case.

OCP Introduction to Oracle 9i: SQL Exam Guide, Jason Couchman, p. 239-240
Chapter 5: Creating Oracle Database Objects

QUESTION 14:

Evaluate the SQL statement:

```
1 SELECT a.emp_name, a.sal, a.dept_id, b.maxsal
2 FROM employees a,
3 (SELECT dept_id, MAX(sal) maxsal
4 FROM employees
5 GROUP BY dept_id) b
6 WHERE a.dept_id = b.dept_id
7 AND a.sal < b.maxsal;
```

What is the result of the statement?

A. The statement produces an error at line 1.

B. The statement produces an error at line 3.

C. The statement produces an error at line 6.

D. The statement returns the employee name, salary, department ID, and maximum salary earned in the department of the employee for all departments that pay less salary than the maximum salary paid in the company.

E. The statement returns the employee name, salary, department ID, and maximum salary earned in the department of the employee for all employees who earn less than the maximum salary in their department.

Answer: E

Explanation:

The statement returns the employee name, salary, department ID, and maximum salary earned in the department of the employee for all employees who earn less than the maximum salary in their department. This query is example of an inline view which is the sub-query in the FROM clause of the main query. The sub-query can be a SELECT statement that utilizes joins, the GROUP BY clause, or the ORDER BY clause.

Incorrect Answers

A: The statement does not produce an error at line 1.

B: The statement does not produce an error at line 3.

C: The statement does not produce an error at line 6.

D: The statement returns the employee name, salary, department ID, and maximum salary earned in the department of the employee for all EMPLOYEES, NOT DEPARTMENTS, who earn less than the maximum salary in their department.

OCP Introduction to Oracle 9i: SQL Exam Guide, Jason Couchman, p. 161-165

Chapter 4: Subqueries

QUESTION 15:

Examine the data in the EMPLOYEES and DEPARTMENTS tables:

EMPLOYEES

EMPLOYEE_ID	EMP_NAME	DEPT_ID	MGR_ID	JOB_ID	SALARY
101	Smith	20	120	SA_REP	4000
102	Martin	10	105	CLERK	2500
103	Chris	20	120	IT_ADMIN	4200
104	John	30	108	HR_CLERK	2500
105	Diana	30	108	IT_ADMIN	5000
106	Smith	40	110	AD_ASST	3000
108	Jennifer	30	110	HR_DIR	6500
110	Bob	40		EX_DIR	8000
120	Ravi	20	110	SA*DIR	6500

DEPARTMENTS

DEPARTMENT_ID	DEPARTMENT_NAME
10	Admin
20	Education
30	IT
40	Human Resources

Also examine the SQL statements that create the EMPLOYEES and DEPARTMENTS tables:

```
CREATE TABLE departments
```

```
(department_id NUMBER PRIMARY KEY,
```

```
department_name VARCHAR2(30));
```

```
CREATE TABLE employees
(EMPLOYEE_ID NUMBER PRIMARY KEY,
EMP_NAME VARCHAR2(20),
DEPT_ID NUMBER REFERENCES
departments(department_id),
MGR_ID NUMBER REFERENCES
employees(employee id),
MGR_ID NUMBER REFERENCES
employees(employee id),
JOB_ID VARCHAR2(15),
SALARY NUMBER);
ON the EMPLOYEES,
```

On the EMPLOYEES table, EMPLOYEE_ID is the primary key.
MGR_ID is the ID of managers and refers to the EMPLOYEE_ID.
DEPT_ID is foreign key to DEPARTMENT_ID column of the DEPARTMENTS table.
On the DEPARTMENTS table, DEPARTMENT_ID is the primary key.

Examine this DELETE statement:

```
DELETE
FROM departments
WHERE department id = 40;
```

What happens when you execute the DELETE statement?

- A. Only the row with department ID 40 is deleted in the DEPARTMENTS table.
- B. The statement fails because there are child records in the EMPLOYEES table with department ID 40.
- C. The row with department ID 40 is deleted in the DEPARTMENTS table. Also the rows with employee IDs 110 and 106 are deleted from the EMPLOYEES table.
- D. The row with department ID 40 is deleted in the DEPARTMENTS table. Also the rows with employee IDs 106 and 110 and the employees working under employee 110 are deleted from the EMPLOYEES table.
- E. The row with department ID 40 is deleted in the DEPARTMENTS table. Also all the rows in the EMPLOYEES table are deleted.
- F. The statement fails because there are no columns specifies in the DELETE clause of the DELETE statement.

Answer: B

Explanation:

It will be error generated because there are 2 child records in the EMPLOYEES table with department number you try to delete from the DEPARTMENTS table.

Incorrect Answers

A: The row with department ID 40 will not be deleted because of the child records in the EMPLOYEES table.

C: Neither the row with department ID 40 will not be deleted not child records in the EMPLOYEES table will be deleted.

D: It will be error when you try to execute the DELETE statement, no rows will be deleted in the EMPLOYEES or the DEPARTMENTS tables.

E: It will be error when you try to execute the DELETE statement, no rows will be deleted in the EMPLOYEES or the DEPARTMENTS tables.

F: The statement fails because of constraint violation not because there are no columns specifies in the

DELETE clause of the DELETE statement.

OCP Introduction to Oracle 9i: SQL Exam Guide, Jason Couchman, p. 240-245

Chapter 5: Creating Oracle Database Objects

QUESTION 16:

Which three are DATETIME data types that can be used when specifying column definitions? (Choose three.)

- A. TIMESTAMP
- B. INTERVAL MONTH TO DAY
- C. INTERVAL DAY TO SECOND
- D. INTERVAL YEAR TO MONTH
- E. TIMESTAMP WITH DATABASE TIMEZONE

Answer: A, C, D

Explanation:

TIMESTAMP, INTERVAL DAY TO SECOND and INTERVAL YEAR TO MONTH can be used to specify column definition.

Incorrect Answers

B: The INTERVAL MONTH TO DAY data type cannot be used when specifying column definitions there are only INTERVAL DAY TO SECOND and INTERVAL YEAR TO MONTH data types.

E: The TIMESTAMP WITH DATABASE TIMEZONE data type cannot be used when specifying column definitions, because there are only TIMESTAMP WITH TIME ZONE and TIMESTAMP WITH LOCAL TIME ZONE data types.

OCP Introduction to Oracle 9i: SQL Exam Guide, Jason Couchman, p. 215-217

Chapter 5: Creating Oracle Database Objects

QUESTION 17:

Which SQL statement defines the FOREIGN KEY constraint on the DEPTNO column of the EMP table?

- A. CREATE TABLE EMP
(empno NUMBER(4),
ename VARCHAR2(35),
deptno NUMBER(7,2) NOT NULL
CONSTRAINT emp_deptno_fk FOREIGN KEY deptno
REFERENCES dept deptno);
- B. CREATE TABLE EMP
(empno NUMBER(4),
ename VARCHAR2(35),
deptno NUMBER(7,2)
CONSTRAINT emp_deptno_fk REFERENCES dept (deptno));
- C. CREATE TABLE EMP
(empno NUMBER(4)
ename VARCHAR2(35),

```
deptno NUMBER(7,2) NOT NULL,  
CONSTRAINT emp_deptno_fk REFERENCES dept (deptno)  
FOREIGN KEY (deptno));  
D. CREATE TABLE EMP (empno NUMBER(4),  
ename VARCHAR2(35),  
deptno NUMBER(7,2) FOREIGN KEY  
CONSTRAINT emp_deptno_fk REFERENCES dept (deptno));
```

Answer: B

Explanation:

This statement provides correct syntax to define the FOREIGN KEY constraint on the DEPTNO column of the EMP table.

Incorrect Answers

A: There is incorrect syntax, because list of columns and column for the constraint need to be surrounded with the brackets.

C: It is incorrect to use FOREIGN KEY keywords to define constraint on the table. It can be used to add integrity constraint to existing table.

D: It is incorrect to use FOREIGN KEY keywords to define constraint on the table. It can be used to add integrity constraint to existing table.

OCP Introduction to Oracle 9i: SQL Exam Guide, Jason Couchman, p. 238-245

Chapter 5: Creating Oracle Database Objects

QUESTION 18:

Evaluate the set of SQL statements:

```
CREATE TABLE dept  
(deptno NUMBER(2),  
dname VARCHAR2(14),  
loc VARCHAR2 (13));  
ROLLBACK;  
DESCRIBE DEPT
```

What is true about the set?

- A. The DESCRIBE DEPT statement displays the structure of the DEPT table.
- B. The ROLLBACK statement frees the storage space occupies by the DEPT table.
- C. The DESCRIBE DEPT statement returns an error ORA-04043: object DEPT does not exist.
- D. The DESCRIBE DEPT statement displays the structure of the DEPT table only if there is a COMMIT statement introduced before the ROLLBACK statement.

Answer: A

Explanation:

The structure of the DEPT table will be displayed because the CREATE TABLE statement is DDL operation and it cannot be rolled back because implicit commit occurs on the database when a user exits SQL*Plus or issues a data-definition language (DDL) command such as a create table statement, user to create a database

object, or an alter table statement, used to alter a database object.

Incorrect Answers

B: The ROLLBACK statement has nothing to do with the storage space of the DEPT table.

C: The DESCRIBE DEPT statement does not produce the error. It displays the structure of the DEPT table.

D: The COMMIT statement does not need to be introduced because implicit commit occurs on the database after creation of the table.

OCP Introduction to Oracle 9i: SQL Exam Guide, Jason Couchman, p. 281-283

Chapter 6: Manipulating Oracle Data

QUESTION 19:

Which data dictionary table should you query to view the object privileges granted to the user on specific columns?

- A. USER_TAB_PRIVS_MADE
- B. USER_TAB_PRIVS
- C. USER_COL_PRIVS_MADE
- D. USER_COL_PRIVS

Answer: D

Explanation:

The USER_COL_PRIVS data dictionary view will show the object privileges granted to the user on specific columns.

Incorrect Answers

A: There is no USER_TAB_PRIVS_MADE view in Oracle.

B: The USER_TAB_PRIVS data dictionary view is used to show the object privileges granted to the user on the tables, not specific columns.

C: There is no USER_COL_PRIVS_MADE view in Oracle.

OCP Introduction to Oracle 9i: SQL Exam Guide, Jason Couchman, p. 356-365

Chapter 8: User Access Control in Oracle

QUESTION 20:

Examine the structure of the EMPLOYEES and DEPARTMENTS tables:

EMPLOYEES

Column name	Data type	Remarks
EMPLOYEE_ID	NUMBER NOT NULL	Primary Key
EMP_NAME	VARCHAR2 (30)	
JOB_ID	VARCHAR2 (20)	
SALARY	NUMBER	
MGR_ID	NUMBER	References EMPLOYEE_ID COLUMN

DEPARTMENTS

Column name	Data type	Remarks
DEPARTMENT_ID	NUMBER NOT NULL	Primary Key
DEPARTMENT_NAME	VARCHAR2(30)	

MGR_ID NUMBER References MGR_ID column of the EMPLOYEES table

Evaluate this SQL statement:

```
SELECT employee_id, e.department_id, department_name,
salary
FROM employees e, departments d
WHERE e. department_id = d.department_id;
Which SQL statement is equivalent to the above SQL statement?
```

- A. SELECT employee_id, department_id, department_name, salary
FROM employees
WHERE department_id IN (SELECT department_id
FROM departments);
- B. SELECT employee_id, department_id, department_name, salary
FROM employees
NATURAL JOIN departments;
- C. SELECT employee_id, d.department_id, department_name, salary
FROM employees e
JOIN departments d
ON e.department_id = d. department_id;
- D. SELECT employee_id, department_id, department_name, Salary
FROM employees
JOIN departments
USING (e.department_id, d.department_id);

Answer: C

Explanation:

This query shows correct JOIN ON clause syntax and provides equivalent to the above SQL statement.

Incorrect Answers

A: This statement will show data only for the EMPLOYEES table with records that have department ID from DEPARTMENTS table, not join result of two tables.

B: NATURAL join selects rows from the tables that have equal values in all matched columns (same column names). If the columns having the same names have different datatypes, an error is returned.

D: There is incorrect usage of JOIN clause with USING keyword.

OCP Introduction to Oracle 9i: SQL Exam Guide, Jason Couchman, p. 112-114

Chapter 3: Advanced Data Selection in Oracle

QUESTION 21:

The EMP table contains these columns:

LAST NAME VARCHAR2(25)

SALARY NUMBER(6,2)

DEPARTMENT_ID NUMBER(6)

You need to display the employees who have not been assigned to any department.

You write the SELECT statement:

```
SELECT LAST_NAME, SALARY, DEPARTMENT_ID
```

```
FROM EMP
```

```
WHERE DEPARTMENT_ID = NULL;
```

What is true about this SQL statement?

- A. The SQL statement displays the desired results.
- B. The column in the WHERE clause should be changed to display the desired results.
- C. The operator in the WHERE clause should be changed to display the desired results.
- D. The WHERE clause should be changed to use an outer join to display the desired results.

Answer: C

Explanation:

The operator in the WHERE clause should be changed to display the desired results. There are times when you want to substitute a value in place of NULL. Oracle provides this functionality with a special function, called NVL(). You cannot use operation equal with NULL, but you can achieve desired results using NVL() function after the WHERE clause.

Incorrect Answers

A: The SQL statement will generate an error because you cannot use operation equal with NULL.

B: The column in the WHERE clause should not be changed to display the desired results.

D: Since there is only one table used in this query you don't need to use outer join to display the desired results.

OCP Introduction to Oracle 9i: SQL Exam Guide, Jason Couchman, p. 31-32

Chapter 1: Overview of Oracle Databases

QUESTION 22:

Evaluate the SQL statement:

```
SELECT ROUND(TRUNC(MOD(1600,10),-1),2)
```

```
FROM dual;
```

What will be displayed?

- A. 0
- B. 1
- C. 0.00
- D. An error statement

Answer: A

Explanation:

Result will be 0. MOD(x,y) function calculates the modulus of x, defined in long division as the integer remainder when x is divided by y until no further whole number can be produced. TRUNC() function truncates x to the decimal precision of y. ROUND(x,y) rounds x to the decimal precision of y.

Incorrect Answers

B: Result will be 0, not 1.

C: Result will be 0, not 0.00 because MOD(1600,10) return 0 and all other functions (TRUNC and ROUND) return 0 also.

D: There is no error in this statement.

OCP Introduction to Oracle 9i: SQL Exam Guide, Jason Couchman, p. 69-71

Chapter 2: Limiting, Sorting, and Manipulating Return Data

QUESTION 23:

Examine the description of the MARKS table:

STD_ID NUMBER(4)

STUDENT_NAME VARCHAR2(30)

SUBJ1 NUMBER(3)

SUBJ2 NUMBER(3)

SUBJ1 and SUBJ2 indicate the marks obtained by a student in two subjects.

Examine this SELECT statement based on the MARKS table:

```
SELECT subj1+subj2 total_marks, std_id
```

```
FROM marks
```

```
WHERE subj1 > AVG(subj1) AND subj2 > AVG(subj2)
```

```
ORDER BY total_marks;
```

What is the result of the SELECT statement?

A. The statement executes successfully and returns the student ID and sum of all marks for each student who obtained more than the average mark in each subject.

B. The statement returns an error at the SELECT clause.

C. The statement returns an error at the WHERE clause.

D. The statement returns an error at the ORDER BY clause.

Answer: C

Explanation:

The statement returns an error at the WHERE clause because group function AVG() cannot be used in the WHERE clause. Group functions can be used in SELECT clause and GROUP BY clause. They allow you to perform data operations on several values in a column of data as though the column were one collective group of data.

Incorrect Answers

A: The statement does not execute successfully because an error will be generated.

B: The statement returns an error at the WHERE, not at the SELECT clause.

D: The statement returns an error at the WHERE, not at the ORDER BY clause.

OCP Introduction to Oracle 9i: SQL Exam Guide, Jason Couchman, p. 122-125

Chapter 3: Advanced Data Selection in Oracle

QUESTION 24:

Which /SQL*Plus feature can be used to replace values in the WHERE

clause?

- A. Substitution variables
- B. Replacement variables
- C. Prompt variables
- D. Instead-of variables
- E. This feature cannot be implemented through /SQL*Plus.

Answer: A

Explanation:

Lexical substitution variables can be used to replace values in the WHERE clause.

Incorrect Answers

- B: There is no replacement variables SQL*Plus feature in Oracle.
 - C: There is no prompt variables SQL*Plus feature in Oracle.
 - D: There is no instead-of variables SQL*Plus feature in Oracle.
 - E: This feature is implemented in the SQL*Plus with lexical substitution variables.
- OCP Introduction to Oracle 9i: SQL Exam Guide, Jason Couchman, p. 165-173
Chapter 4: Subqueries

QUESTION 25:

You want to display the titles of books that meet these criteria:

1. Purchased before January 21, 2001
2. Price is less than \$500 or greater than \$900

You want to sort the results by their date of purchase, starting with the most recently bought book.

Which statement should you use?

- A.

```
SELECT book_title
FROM books
WHERE price between 500 and 900
AND purchase_date < '21-JAN-2001'
ORDER BY purchase_date;
```
- B.

```
SELECT book_title
FROM books
WHERE price IN (500,900)
AND purchase_date < '21-JAN-2001'
ORDER BY purchase date ASC;
```
- C.

```
SELECT book_title
FROM books
WHERE price < 500 or > 900
AND purchase_date < '21-JAN-2001'
ORDER BY purchase date DESC;
```
- D.

```
SELECT book_title
FROM books
WHERE (price < 500 OR price > 900)
```



```
AND purchase_date < '21-JAN-2001'  
ORDER BY purchase date DESC;
```

Answer: D

Explanation:

This statement provides required results.

Incorrect Answers

A: This query will show books with price in range \$500 and \$900, not less than \$500 or greater than \$900.

B: This query will show books with prices exactly \$500 or \$900, not less than \$500 or greater than \$900.

C: This order will not show correct rows because of incorrect syntax in the WHERE clause..

OCP Introduction to Oracle 9i: SQL Exam Guide, Jason Couchman, p. 56-66

Chapter 2: Limiting, Sorting, and Manipulating Return Data

QUESTION 26:

Which statement explicitly names a constraint?

A. ALTER TABLE student_grades

ADD

FOREIGN KEY (student_id) REFERENCES students (student_id);

B. ALTER TABLE student_grades

ADD CONSTRAINT NAME = student_id_fk

FOREIGN KEY (student_id) REFERENCES students (student_id);

C. ALTER TABLE student_grades

ADD CONSTRAINT student_id_fk

FOREIGN KEY (student_id) REFERENCES students (student_id);

D. ALTER TABLE student grades

ADD NAMED CONSTRAINT student_id_fk

FOREIGN KEY (student_id) REFERENCES students (student_id);

E. ALTER TABLE student grades

ADD NAME student_id_fk

FOREIGN KEY (student_id) REFERENCES students (student_id);

Answer: C

Explanation:

This statement provides correct syntax to add a foreign key constraint to the existing table.

Incorrect Answers

A: The ADD FOREIGN KEY is wrong construction to add a foreign key constraint to the existing table.

B: The ADD CONSTRAINT NAME is wrong construction to add a foreign key constraint to the existing table.

D: The ADD NAMED CONSTRAINT is wrong construction to add a foreign key constraint to the existing table.

E: The ADD NAME is wrong construction to add a foreign key constraint to the existing table.

OCP Introduction to Oracle 9i: SQL Exam Guide, Jason Couchman, p. 238-239

Chapter 5: Creating Oracle Database Objects

QUESTION 27:

Examine the SQL statements that creates ORDERS table:

```
CREATE TABLE orders
(SER_NO NUMBER UNIQUE,
ORDER_ID NUMBER,
ORDER_DATE DATE NOT NULL
STATUS VARCHAR2(10)
CHECK (status IN ('CREDIT','CASH')),
PROD_ID_NUMBER
REFERENCES PRODUCTS(PRODUCT_ID),
ORD_TOTAL NUMBER,
PRIMARY KEY (order id, order date));
```

For which columns would an index be automatically created when you execute the aboveSQL statement?
(Choose two)

- A. SER_NO
- B. ORDER_ID
- C. STATUS
- D. PROD_ID
- E. ORD_TOTAL
- F. Composite index on ORDER_ID and ORDER_DATE

Answer: A, F

Explanation:

Indexes are created automatically by Oracle to support integrity constraints that enforce uniqueness. The two types of integrity constraints that enforce uniqueness are PRIMARY KEY and UNIQUE constraints. When the primary key or UNIQUE constraint is declared, a unique index to support the column's uniqueness is also created, and all values in all columns that were defined as part of the primary key or UNIQUE constraint are placed into the index.

Incorrect Answers

- B: There will not be index for ORDER_ID column.
- C: There will not be index for STATUS column.
- D: There will not be index for PROD_ID column.
- E: There will not be index for ORD_TOTAL column.

OCP Introduction to Oracle 9i: SQL Exam Guide, Jason Couchman, p. 237-238

Chapter 5: Creating Oracle Database Objects

QUESTION 28:

You created a view called EMP_DEPT_VU that contains three columns from the EMPLOYEES and DEPARTMENTS tables:

```
EMPLOYEE_ID, EMPLOYEE_NAME AND DEPARTMENT_NAME.
```

The DEPARTMENT_ID column of the EMPLOYEES table is the foreign key to the primary key

DEPARTMENT_ID column of the DEPARTMENTS table.

You want to modify the view by adding a fourth column, MANAGER_ID of NUMBER data type from the EMPLOYEES tables.

How can you accomplish this task?

- A. ALTER VIEW EMP_dept_vu (ADD manger_id NUMBER);
- B. MODIFY VIEW EMP_dept_vu (ADD manger_id NUMBER);
- C. ALTER VIEW emp_dept_vu AS
SELECT employee_id, employee_name,
department_name, manager_id
FROM employee e, departments d
WHERE e.department _ id = d.department_id;
- D. MODIFY VIEW emp_dept_vu AS
SELECT employee_id, employee_name,
department_name, manager_id
FROM employees e, departments d
WHERE e.department _ id = d.department_id;
- E. CREATE OR REPLACE VIEW emp_dept_vu AS
SELECT employee_id, employee_name,
department_name, manager_id
FROM employees e, departments d
WHERE e.department _ id = d.department_id;
- F. You must remove the existing view first, and then run the CREATE VIEW command with a new column list to modify a view.

Answer: E

Explanation:

When we want to alter the underlying data used in the definition of a view, we use the CREATE OR REPLACE VIEW statement. When a CREATE OR REPLACE VIEW statement is issued, Oracle will disregard the error that arises when it encounters the view that already exists with that name, and it will overwrite the definition for the old view with the definition for the new one.

Incorrect Answers

- A: There is no ALTER VIEW command in Oracle.
- B: There is no MODIFY VIEW command in Oracle.
- C: There is no ALTER VIEW command in Oracle.
- D: There is no MODIFY VIEW command in Oracle.
- F: You don't need to remove the existing view to create modified view. You are able to do that with CREATE OR REPLACE command.

OCP Introduction to Oracle 9i: SQL Exam Guide, Jason Couchman, p. 310-313

Chapter 7: Creating Other Database Objects in Oracle

QUESTION 29:

For which two constraints does the Oracle Server implicitly create a unique index? (Choose two.)

- A. NOT NULL
- B. PRIMARY KEY
- C. FOREIGN KEY
- D. CHECK
- E. UNIQUE

Answer: B, E

Explanation:

Indexes are created automatically by Oracle to support integrity constraints that enforce uniqueness. The two types of integrity constraints that enforce uniqueness are PRIMARY KEY and UNIQUE constraints. When the primary key or UNIQUE constraint is declared, a unique index to support the column's uniqueness is also created, and all values in all columns that were defined as part of the primary key or UNIQUE constraint are placed into the index.

Incorrect Answers

- A: Oracle will not implicitly create an unique index for the NOT NULL constraint.
 - C: Oracle will not implicitly create an unique index for the FOREIGN KEY constraint.
 - D: Oracle will not implicitly create an unique index for the FOREIGN KEY constraint.
- OCP Introduction to Oracle 9i: SQL Exam Guide, Jason Couchman, p. 237-238
Chapter 5: Creating Oracle Database Objects

QUESTION 30:

Which three SELECT statements displays 2000 in the format "\$2,000.00"? (Choose three)

- A. SELECT TO CNAR(2000, '\$#,###.##')
FROM dual;
- B. SELECT TO CNAR(2000, '\$0,000.00')
FROM dual;
- C. SELECT TO CNAR(2000, '\$9,999.00')
FROM dual;
- D. SELECT TO CNAR(2000, '\$9,999.99')
FROM dual;
- E. SELECT TO CNAR(2000, '\$2,000.00')
FROM dual;
- F. SELECT TO CNAR(2000, '\$N,NNN.NN')
FROM dual;

Answer: B, C, D

Explanation:

Only queries in answers B, C and D will show result as in the format "\$2,000.00".

Incorrect Answers

- A: Oracle error "ORA-01481: invalid number format model" will be generated.
- E: Oracle error "ORA-01481: invalid number format model" will be generated.
- F: Oracle error "ORA-01481: invalid number format model" will be generated.

QUESTION 31:

Examine the structure of the EMPLOYEES and NEW_EMPLOYEES tables:

EMPLOYEESEMPLOYEE_ID NUMBER Primary Key

FIRST_NAME VARCHAR2(25)

LAST_NAME VARCHAR2(25)

HIRE_DATE DATE

NEW EMPLOYEESEMPLOYEE_ID NUMBER Primary Key

NAME VARCHAR2(60)

Which UPDATE statement is valid?

A. UPDATE new_employees SET name = (Select last_name||
first_name
FROM employees
Where employee_id
=180)

B. UPDATE new_employees SET name = (SELECT
last_name||first_name
FROM employees)
WHERE employee_id = 180;

C. UPDATE new_employees SET name = (SELECT last_name||
first_name
FROM employees
WHERE employee_id
=180)

WHERE employee_id =(SELECT employee_id
FROM new employees

D. UPDATE new_employees SET name = (SELECT last name||
first_name
FROM employees
WHERE employee_id=
(SELECT employee_id
FROM new_employees))
WHERE employee_id
=180;

Answer: A

Explanation:

Sub-query in this answer will return one row value, concatenated first and last name for the employee with ID 180, so update will be successful. When sub-queries are linked to the parent by equality comparisons, the parent query expects only one row of data from the sub-query.

Incorrect Answers

B: Sub-query will return concatenated first and last name for ALL records from the table EMPLOYEES. It will cause an error for the parent query, because it expects one only one row.

C: Last WHERE statement in this query will generate error because sub-query returns multi-row result.

D: SELECT statement for the NEW_EMPLOYEES table in this query will generate error because sub-query returns multi-row result.

OCP Introduction to Oracle 9i: SQL Exam Guide, Jason Couchman, p. 150-156

Chapter 4: Subqueries

QUESTION 32:

Examine the structure of the EMPLOYEES, DEPARTMENTS, and LOCATIONS tables.
EMPLOYEES

EMPLOYEE_ID	NUMBER	NOT NULL, Primary Key
EMP_NAME	VARCHAR2 (30)	
JOB_ID	VARCHAR2 (20)	
SALARY	NUMBER	
MGR_ID	NUMBER	References EMPLOYEE_ID column
DEPARTMENT_ID	NUMBER	Foreign key to DEPARTMENT_ID column of the DEPARTMENTS table

DEPARTMENTS

DEPARTMENT_ID	NUMBER	NOT NULL, Primary Key
DEPARTMENT_NAME	VARCHAR2 (30)	
MGR_ID	NUMBER	References MGR_ID column of the EMPLOYEES table
LOCATION_ID	NUMBER	Foreign key to LOCATION_ID column of the LOCATIONS table

LOCATIONS

LOCATION_ID	NUMBER	NOT NULL, Primary Key
-------------	--------	--------------------------

CITY	VARCHAR2 30)	
------	------------------	--

Which two SQL statements produce the name, department name, and the city of all the employees who earn more than 10000? (Choose two)

- A. SELECT emp_name, department_name, city
FROM employees e
JOIN departments d
USING (department_id)
JOIN locations l
USING (location_id)
WHERE salary > 10000;
- B. SELECT emp_name, department_name, city
FROM employees e, departments d, locations l
JOIN ON (e.department_id = d.department_id)
AND (d.location_id = l.location_id)
AND salary > 10000;
- C. SELECT emp_name, department_name, city
FROM employees e, departments d, locations l
WHERE salary > 10000;
- D. SELECT emp_name, department_name, city
FROM employees e, departments d, locations l
WHERE e.department_id = d.department_id
AND d.location_id = l.location_id
AND salary > 10000;
- E. SELECT emp_name, department_name, city
FROM employees e
NATURAL JOIN departments, locations
WHERE salary > 10000;

Answer: A, D

Explanation:

A is a correct response (JOIN USING).

Incorrect Answers

B: Not the correct syntax for an ANSI Standard JOIN

C: This query will built Cartesian product because there is no join conditions in WHERE clause to join tables.

E:

NATURAL JOIN is a join between two where Oracle joins the tables according to the column(s) in the two tables sharing the same name. It is required to add one more NATURAL JOIN clause to join additional table.

OCP Introduction to Oracle 9i: SQL Exam Guide, Jason Couchman, p. 98-118

Chapter 3: Advanced Data Selection in Oracle

QUESTION 33:

Examine the description of the EMPLOYEES table:

EMP_ID NUMBER(4) NOT NULL
LAST_NAME VARCHAR2(30) NOT NULL
FIRST_NAME VARCHAR2(30)
DEPT_ID NUMBER(2)
JOB_CAT VARCHAR2(30)
SALARY NUMBER(8,2)

Which statement shows the department ID, minimum salary, and maximum salary paid in that department, only of the minimum salary is less than 5000 and the maximum salary is more than 15000?

- A. SELECT dept_id, MIN(salary), MAX(salary)
FROM employees
WHERE MIN(salary) <5000 AND MAX (salary) > 15000;
- B. SELECT dept_id, MIN(salary), MAX(salary)
FROM employees
WHERE MIN(salary) < 5000 AND MAX(salary) > 15000
GROUP BY dept_id;
- C. SELECT dept_id, MIN(salary), MAX(salary)
FROM employees
HAVING MIN(salary) <5000 AND MAX (salary) > 15000;
- D. SELECT dept_id, MIN(salary), MAX(salary)
FROM employees
GROUP BY dept_id
HAVING MIN (salary) < 5000 AND MAX(salary)
- E. SELECT dept_id, MIN(salary), MAX(salary)
FROM employees
GROUP BY dept_id, salary
HAVING MIN (salary) <5000 AND MAX (salary) > 15000;

Answer: D

Explanation:

This SELECT statement shows correct result.

Incorrect Answers

- A: To provide correct data statement needs also GROUP BY clause.
- B: This statement will not provide correct results.
- C: HAVING clause can be used only in conjunction with GROUP BY clause.
- E: You need only grouping by department, not by salary.

QUESTION 34:

Examine the structure of the EMPLOYEES table:

Column name	Data Type	Remarks
EMPLOYEE_ID	NUMBER	NOT NULL, Primary Key

EMP_NAME VARCHAR2(30)
JOB_ID VARCHAR2(20) NOT NULL
SAL NUMBER
MGR_ID NUMBER References EMPLOYEE_ID column
DEPARTMENT_ID NUMBER Foreign key to DEPARTMENT_ID
column of the DEPARTMENTS table

You need to create a view called EMP_VU that allows the user to insert rows through the view. Which SQL statement, when used to create the EMP_VU view, allows the user to insert rows?

- A. CREATE VIEW emp_Vu AS
SELECT employee_id, emp_name,
department_id
FROM employees
WHERE mgr_id IN (102, 120);
- B. CREATE VIEW emp_Vu AS
SELECT employee_id, emp_name, job_id
department_id
FROM employees
WHERE mgr_id IN (102, 120);
- C. CREATE VIEW emp_Vu AS
SELECT department_id, SUM(sal) TOTALSAL
FROM employees
WHERE mgr_id IN (102, 120)
GROUP BY department_id;
- D. CREATE VIEW emp_Vu AS
SELECT employee_id, emp_name, job_id,
DISTINCT department_id
FROM employees;

Answer: B

Explanation:

This statement will create view that can be used to change tables in underlying table through simple views. It includes primary key, NOT NULL column and foreign key to avoid constraint restrictions.

Incorrect Answers

A: This statement does not include JOB_ID column that cannot be NULL. In general, all constraint restrictions defined on the underlying table also apply to modifying data via the view. For example, you can't add data to an underlying table via a view that violates the table's primary key constraint.

C: You cannot update a column of an underlying table if the simple view use a single-row function to define the column.

D: You may not insert, update, or delete records data on the table underlying the simple view if the SELECT statement creating the view contains a GROUP BY clause, GROUP function, or DISTINCT clause.

OCP Introduction to Oracle 9i: SQL Exam Guide, Jason Couchman, p. 298-299

Chapter 7: Creating Other Database Objects in Oracle

QUESTION 35:

The STUDENT_GRADES table has these columns:

STUDENT_ID NUMBER(12)

SEMESTER_END DATE

GPA NUMBER(4,3)

The registrar has asked for a report on the average grade point average (GPA) for students enrolled during semesters that end in the year 2000. Which statement accomplish this?

A. SELECT AVERAGE(gpa)

FROM student_grades

WHERE semester _ end > '01-JAN-2000' and semester end <31-DEC-2000';

B. SELECT COUNT(gpa)

FROM student grades

WHERE semester _ end > '01-JAN-2000' and semester end <31-DEC-2000';

C. SELECT MIN(gpa)

FROM student grades

WHERE semester _ end > '01-JAN-2000' and semester end <31-DEC-2000';

D. SELECT AVG(gpa)

FROM student_grades

WHERE semester _ end BETWEEN '01-JAN-2000' and '31-DEC-2000';

E. SELECT SUM(gpa)

FROM student grades

WHERE semester _ end > '01-JAN-2000' and semester end <31-DEC-2000';

F. SELECT MEDIAN(gpa)

FROM student_grades

WHERE semester _ end > '01-JAN-2000' and semester end <31-DEC-2000';

Answer: D

Explanation:

Statement in this answer will show correct result, using function AVG(). This function takes the values for a single column on all rows returned by the query and calculates the average value for that column.

Incorrect Answers

A: There is no AVERAGE() function in Oracle.

B: COUNT() will calculate number of row, not an average grade point.

C: MIN() function will calculate minimum grade for all students enrolled during semesters that end in the year 2000.

E: SUM() will calculate sum of all grade points for all students enrolled during semesters that end in the year 2000.

F: There is no MEDIAN() function in Oracle.

OCP Introduction to Oracle 9i: SQL Exam Guide, Jason Couchman, p. 123-125

Chapter 3: Advanced Data Selection in Oracle

QUESTION 36:

Examine the structure of the EMPLOYEES and NEW EMPLOYEES tables:

EMPLOYEES

EMPLOYEE_ID NUMBER Primary Key

FIRST_NAME VARCHAR2(25)

LAST_NAME VARCHAR2(25)

HIRE_DATE DATE

NEW EMPLOYEES

EMPLOYEE_ID NUMBER Primary Key

NAME VARCHAR2(60)

Which MERGE statement is valid?

A. MERGE INTO new_employees c

USING employees e

ON (c.employee_id = e.employee_id)

WHEN MATCHED THEN

UPDATE SET

c.name = e.first_name || ',' || e.last_name

WHEN NOT MATCHED THEN

INSERT VALUES(e.employee_id, e.first_name || '

' || e.last_name);

B. MERGE new_employees c

USING employees e

ON (c.employee_id = e.employee_id)

WHEN EXIST THEN

UPDATE SET

c.name = e.first_name || ',' || e.last_name

WHEN NOT MATCHED THEN

INSERT VALUES(e.employee_id, e.first_name || '

' || e.last_name);

C. MERGE INTO new_employees c

USING employees e

ON (c.employee_id = e.employee_id)

WHEN EXISTS THEN

UPDATE SET

c.name = e.first_name || ',' || e.last_name

WHEN NOT MATCHED THEN

INSERT VALUES(e.employee_id, e.first_name || '

' || e.last_name);

D. MERGE new_employees c

FROM employees e

ON (c.employee_id = e.employee_id)

WHEN MATCHED THEN

UPDATE SET

c.name = e.first_name || ',' || e.last_name

WHEN NOT MATCHED THEN

INSERT INTO new_employees VALUES (e.employee_id, e.first_name || ',' || e.last_name);

Answer: A

Explanation:

Correct syntax for the MERGE command is MERGE INTO table1 USING table2 on (join_condition) WHEN MATCHED UPDATE SET col1 = value WHEN NOT MATCHED INSERT (column_list) values (column_values).

Incorrect Answers

B: WHEN EXIST THEN clause cannot be used in the MERGE statement.

C: WHEN EXIST THEN clause cannot be used in the MERGE statement.

D: FROM clause cannot be used in the MERGE statement.

OCP Introduction to Oracle 9i: SQL Exam Guide, Jason Couchman, p. 273-275

Chapter 6: Manipulating Oracle Data

QUESTION 37:

Which two are true about aggregate functions? (Choose two.)

A. You can use aggregate functions in any clause of a SELECT statement.

B. You can use aggregate functions only in the column list of the SELECT clause and in the WHERE clause of a SELECT statement.

C. You can mix single row columns with aggregate functions in the column list of a SELECT statement by grouping on the single row columns.

D. You can pass column names, expressions, constants, or functions as parameters to an aggregate function.

E. You can use aggregate functions on a table, only by grouping the whole table as one single group.

F. You cannot group the rows of a table by more than one column while using aggregate functions.

Answer: C, D

Explanation:

It is possible to mix single row columns with aggregate functions in the column list of a SELECT statement by grouping on the single row columns. Also it is acceptable to pass column names, expressions, constraints, or other functions as parameters to an aggregate function.

Incorrect Answers

A: You cannot use aggregate functions in any clause of a SELECT statement. For example, they cannot be used with a WHEN statement.

B: It is not possible to use aggregate functions in the WHERE clause of a SELECT statement. But they can be used with a HAVING clause used after the GROUP BY clause, for example.

E: You don't need to group the whole table as one single group.

F: It is possible to group more than one column while using aggregate functions.

OCP Introduction to Oracle 9i: SQL Exam Guide, Jason Couchman, p. 122-135

Chapter 3: Advanced Data Selection in Oracle

QUESTION 38:

1Z0-007

Examine the data of the EMPLOYEES table.

EMPLOYEES (EMPLOYEE_ID is the primary key. MGR_ID is the ID of managers and refers to the EMPLOYEE_ID)

EMPLOYEE_ID	EMP_NAME	DEPT_ID	MGR_ID	JOB_ID	SALARY
101	Smith	20	120	SA_REP	4000
102	Martin	10	105	CLERK	2500
103	Chris	20	120	IT_ADMIN	4200
104	John	30	108	HR_CLERK	2500
105	Diana	30	108	HR_MGR	5000
106	Bryan	40	110	AD_ASST	3000
108	Jennifer	30	110	HR_DIR	6500
110	Bob	40		EX_DIR	8000
120	Ravi	20	110	SA_DIR	6500

Which statement lists the ID, name, and salary of the employee, and the ID and name of the employee's manager, for all the employees who have a manager and earn more than 4000?

- A. SELECT employee_id "Emp_id", emp_name "Employee", salary, employee_id "Mgr_id", emp_name "Manager" FROM employees WHERE salary > 4000;
- B. SELECT e.employee_id "Emp_id", e.emp_name "Employee", e.salary, m.employee_id "Mgr_id", m.emp_name "Manager" FROM employees e, employees m WHERE e.mgr_id = m.mgr_id AND e.salary > 4000;
- C. SELECT e.employee_id "Emp_id", e.emp_name "Employee", e.salary, m.employee_id "Mgr_id", m.emp_name "Manager" FROM employees e, employees m WHERE e.mgr_id = m.employee_id AND e.salary > 4000;
- D. SELECT e.employee_id "Emp_id", e.emp_name "Employee", e.salary, m.mgr_id "Mgr_id", m.emp_name "manager" FROM employees e, employees m WHERE e.mgr_id = m.employee_id AND e.salary > 4000;
- E. SELECT e.employee_id "Emp_id", e.emp_name "Employee",

```
e.salary,  
m.mgr_id "Mgr_id", m.emp_name "Manager"  
FROM employees e, employees m  
WHERE e.employee_id = m.employee_id  
AND e.salary > 4000;
```

Answer: C

Explanation:

This statement lists the ID, name, and salary of the employee, and the ID and name of the employee's manager, for all the employees who have a manager and earn more than 4000

Incorrect Answers

A: This statement does not check does employee have a manager or not, so it will not provide correct result.

B: Usage of "e.mgr_id = m.mgr_id" condition is wrong to achieve required result.

D: This statement uses "m.mgr_id" to show manager's manager, not employ's manager.

E: Usage of "WHERE e.employee_id = m.employee_id" condition is wrong to achieve required result.

OCP Introduction to Oracle 9i: SQL Exam Guide, Jason Couchman, p. 118-122

Chapter 3: Advanced Data Selection in Oracle

QUESTION 39:

In a SELECT statement that includes a WHERE clause, where is the GROUP BY clause placed in the SELECT statement?

A. Immediately after the SELECT clause

B. Before the WHERE clause

C. Before the FROM clause

D. After the ORDER BY clause

E. After the WHERE clause

Answer: E

Explanation:

The GROUP BY clause can be place only after the WHERE clause, or after FROM clause if there is no the WHERE clause in the statement.

Incorrect Answers

A: It is not possible to place the GROUP BY clause immediately after the SELECT clause.

B: It is not possible to place the GROUP BY clause before the WHERE clause, it can be done only after it.

C: It is not possible to place the GROUP BY clause before the FROM clause.

D: It is not possible to place the GROUP BY clause after the ORDER BY clause.

OCP Introduction to Oracle 9i: SQL Exam Guide, Jason Couchman, p. 56-67

Chapter 2: Limiting, Sorting, and Manipulating Return Data

QUESTION 40:

The STUDENT_GRADES table has these columns:

STUDENT_ID NUMBER(12)
SEMESTER_END DATE
GPA NUMBER(4,3)

The register has requested a report listing the students' grade point averages (GPA), sorted from highest grade point average to lowest within each semester, starting from the earliest date. Which statement accomplishes this?

- A. SELECT student_id, semester_end, gpa
FROM student_grades
ORDER BY semester_end DESC, gpa DESC;
- B. SELECT student_id, semester_end, gpa
FROM student_grades
ORDER BY semester_end, ASC,gpa ASC;
- C. SELECT student_id, semester_end, gpa
FROM student_grades
ORDER BY semester_end, gpa DESC;
- D. SELECT student_id, semester_end, gpa
FROM student_grades
ORDER BY gpa DESC,semester_end DESC;
- E. SELECT student_id, semester_end, gpa
FROM student_grades

Answer: C

Explanation:

This answer shows correct syntax and semantics to receive desired result.

Incorrect Answers

- A: Semesters will be sorted started from the oldest date, not the earliest.
- B: GPA data will be sorted in ascending order, what is opposite to our task.
- D: Semesters will be sorted started from the oldest date, not the earliest. Only difference with answer A is order of columns in the ORDER BY clause.
- E: This query has wrong order of columns to sort: results need to be sorted first by semester, than by grade point average.

OCP Introduction to Oracle 9i: SQL Exam Guide, Jason Couchman, p. 56-61

Chapter 2: Limiting, Sorting, and Manipulating Return Data

QUESTION 41:

The ORDERS table has these columns:

ORDER_ID NUMBER(4) NOT NULL
CUSTOMER_ID NUMBER(12) NOT NULL
ORDER_TOTAL NUMBER(10,2)

The ORDERS table tracks the Order number, the order total, and the customer to whom the Order belongs.

Which two statements retrieve orders with an inclusive total that ranges between 100.00 and 2000.00 dollars?
(Choose two.)

- A. SELECT customer_id, order_id, order_total
FROM orders
RANGE ON order _ total (100 AND 2000) INCLUSIVE;
- B. SELECT customer_id, order_id, order_total
FROM orders
HAVING order _ total BETWEEN 100 and 2000;
- C. SELECT customer_id, order_id, order_total
FROM orders
WHERE order _ total BETWEEN 100 and 2000;
- D. SELECT customer_id, order_id, order_total
FROM orders
WHERE order_total >= 100 and <= 2000;
- E. SELECT customer_id, order_id, order_total
FROM orders
WHERE order_total >= 100 and order_total <= 2000;

Answer: C, E

Explanation:

Answers C and E provide correct results to show. You can use BETWEEN or comparison operations to retrieve data.

Incorrect Answers

A: There is no RANGE ON or INCLUSIVE keyword in Oracle.

B: HAVING clause can be use only in conjunction with the GROUP BY clause.

D: Syntax "order_total >= 100 and <= 2000" is incorrect.

OCP Introduction to Oracle 9i: SQL Exam Guide, Jason Couchman, p. 61-67

Chapter 2: Limiting, Sorting, and Manipulating Return Data

QUESTION 42:

Examine the data in the EMPLOYEES and EMP_HIST tables:

EMPLOYEES

EMPLOYEE_ID	NAME	DEPT_ID	MGR_ID	JOB_ID	SALARY
101	Smith	20	120	SA_REP	4000
102	Martin	10	105	CLERK	2500
103	Chris	20	120	IT_ADMIN	4200
104	John	30	108	HR_CLERK	2500
105	Diana	30	108	IT_ADMIN	5000
106	Smith	40	110	AD_ASST	3000
108	Jennifer	30	110	HR_DIR	6500
110	Bob	40		EX_DIR	8000

120	Ravi	20	110	SA_DIR	6500
-----	------	----	-----	--------	------

EMP HIST

EMPLOYEE_ID	NAME	JOB_ID	SALARY
101	Smith	SA_CLERK	2000
103	Chris	IT_CLERK	2200
104	John	HR_CLERK	2000
106	Smith	AD_ASST	3000
108	Jennifer	HR_MGR	4500

The EMP_HIST table is updated at the end of every year. The employee ID, name, job ID, and salary of each existing employee are modified with the latest data. New employee details are added to the table.

Which statement accomplishes this task?

- A. UPDATE emp_hist
SET employee_id, name, job_id, salary =
(SELECT employee_id, name, job_id, salary
FROM employees)
WHERE employee_id IN
(SELECT employee_id
FROM employees);
- B. MERGE INTO emp_hist eh
USING employees e
ON (eh.employee_id = e.employee_id)
WHEN MATCHED THEN
UPDATE SET eh.name = e.name,
eh.job_id = e.job_id,
eh.salary = e.salary
WHEN NOT MATCHED THEN
INSERT VALUES (e.employee_id, e.name,
e.job_id, e.salary);
- C. MERGE INTO emp_hist eh
USING employees e
ON (eh.employee_id = e.employee_id)
WHEN MATCHED THEN
UPDATE emp_hist SET eh.name = e.name,
eh.job_id = e.job_id,
eh.salary = e.salary
WHEN NOT MATCHED THEN
INSERT INTO emp_hist
VALUES (e.employee_id, e.name, e.job_id, e.salary);
- D. MERGE INTO emp_hist eh
USING employees e
WHEN MATCHED THEN

```
UPDATE emp_hist SET eh.name = e.name,  
eh.job_id = e.job_id,  
eh.salary = e.salary  
WHEN NOT MATCHED THEN  
INSERT INTO emp_hist  
VALUES (e.employees_id, e.name, e.job_id, e.salary);
```

Answer: B

Explanation:

This task can be done using the MERGE command. Correct syntax for the MERGE command is MERGE INTO table1 USING table2 on (join_condition) WHEN MATCHED UPDATE SET col1 = value WHEN NOT MATCHED INSERT (column_list) values (column_values).

Incorrect Answers

A: MERGE command can handle this task, not UPDATE: new employee details will not be added to the table

C: This statement would be correct if UPDATE SET is syntax used, not UPDATE table_name SET syntax as in usual UPDATE command.

D: "ON condition" clause of the MERGE command is absent.

OCP Introduction to Oracle 9i: SQL Exam Guide, Jason Couchman, p. 273-275

Chapter 6: Manipulating Oracle Data

QUESTION 43:

Which two statements about subqueries are true? (Choose two.)

- A. A single row subquery can retrieve data from only one table.
- B. A SQL query statement cannot display data from table B that is referred to in its subquery, unless table B is included in the main query's FROM clause.
- C. A SQL query statement can display data from table B that is referred to in its subquery, without including table B in its own FROM clause.
- D. A single row subquery can retrieve data from more than one table.
- E. A single row subquery cannot be used in a condition where the LIKE operator is used for comparison.
- F. A multiple-row subquery cannot be used in a condition where the LIKE operator is used for comparison.

Answer: B, D

Explanation:

A SQL query statement cannot display data from table B that is referred to in its sub-query, unless table B is included in the main query's FROM clause. And a single row sub-query can retrieve data from more than one table.

Incorrect Answers

A: A single row sub-query can retrieve data from more than one table.

C: A SQL query statement cannot display data from table B that is referred to in its sub-query, unless table B is included in the main query's FROM clause.

E: A single row sub-query can be used in a condition where the LIKE operator is used for comparison.

F: A multiple-row sub-query can be used in a condition where the LIKE operator is used for comparison.

QUESTION 44:

Examine the data of the EMPLOYEES table.

EMPLOYEES (EMPLOYEE_ID is the primary key. MGR_ID is the ID of managers and refers to the EMPLOYEE_ID)

EMPLOYEE_ID	EMP_NAME	DEPT_ID	MGR_ID	JOB_ID	SALARY
101	Smith	20	120	SA_REP	4000
102	Martin	10	105	CLERK	2500
103	Chris	20	120	IT_ADMIN	4200
104	John	30	108	HR_CLERK	2500
105	Diana	30	108	HR_MGR	5000
106	Bryan	40	110	AD_ASST	3000
108	Jennifer	30	110	HR_DIR	6500
110	Bob	40		EX_DIR	8000
120	Ravi	20	110	SA_DIR	6500

Evaluate this SQL statement:

```
SELECT e.employee_id "Emp_id", e.emp_name "Employee", e.salary,  
m.employee_id "Mgr_id", m.emp_name "Manager"  
FROM employees e, employees m  
WHERE e.mgr_id = m.employee_id  
AND e.salary > 4000;
```

What is its output?

A.

```
EMP_id EMPLOYEE SALARY Mgr_id Manager  
-----
```

```
110 Bob 8000 Bob  
120 Ravi 6500 110 Ravi  
108 Jennifer 6500 110 Jennifer  
103 Chris 4200 120 Chris  
105 Diana 5000 108 Diana
```

B.

```
EMP_id EMPLOYEE SALARY Mgr_id Manager  
-----
```

```
120 Ravi 6500 110 Bob  
108 Jennifer 6500 110 Bob  
103 Chris 4200 120 Ravi  
105 Diana 5000 108 Jennifer
```

C.

EMP_id EMPLOYEE SALARY Mgr_id Manager

110 Bob 8000
120 Ravi 6500 110 Bob
108 Jennifer 6500 110 Bob
103 Chris 4200 120 Ravi
105 Diana 5000 108 Jennifer

D

EMP_id EMPLOYEE SALARY Mgr_id Manager

110 Bob 8000 110 Bob
120 Ravi 6500 120 Ravi
108 Jennifer 6500 108 Jennifer
103 Chris 4200 103 Chris
105 Diana 5000 105 Dina

E. The SQL statement produces an error.

Answer: B

Explanation:

This statement lists the ID, name, and salary of the employee, and the ID and name of the employee's manager, for all the employees who have a manager and earn more than 4000

Incorrect Answers

A: This output will be provided by different query.

C: This output will be provided by different query.

D: This output will be provided by different query.

E: This SQL query will not produce error, it will show results as in answer B.

OCP Introduction to Oracle 9i: SQL Exam Guide, Jason Couchman, p. 118-122

Chapter 3: Advanced Data Selection in Oracle

QUESTION 45:

You added a PHONE_NUMBER column of NUMBER data type to an existing EMPLOYEES table. The EMPLOYEES table already contains records of 100 employees. Now, you want to enter the phone numbers of each of the 100 employees into the table.

Some of the employees may not have a phone number available.

Which data manipulation operation do you perform?

A. MERGE

B. INSERT

C. UPDATE

D. ADD

E. ENTER

F. You cannot enter the phone numbers for the existing employee records.

Answer: C

Explanation:

To update information you need to use UPDATE command.

Incorrect Answers

A: Since you don't have to add any records to the table you don't need the MERGE command.

B: Since you don't have to add any records to the table you don't need the MERGE command.

D: There is no ADD command in Oracle.

E: There is no ENTER command in Oracle.

F: You can enter the phone numbers for the existing employee records by using UPDATE command.

OCP Introduction to Oracle 9i: SQL Exam Guide, Jason Couchman, p. 267-270

Chapter 3: Manipulating Oracle Data

QUESTION 46:

In which case would you use a FULL OUTER JOIN?

A. Both tables have NULL values.

B. You want all unmatched data from one table.

C. You want all matched data from both tables.

D. You want all unmatched data from both tables.

E. One of the tables has more data than the other.

F. You want all matched and unmatched data from only one table.

Answer: D

Explanation:

Oracle9i also makes it possible for you to easily execute a full outer join, including all records from the tables that would have been displayed if you had used both LEFT OUTER JOIN or RIGTH OUTER JOIN clauses.

Incorrect Answers

A: You will not use a FULL OUTER JOIN if both tables have NULL values.

B: You will not use a FULL OUTER JOIN if you want all unmatched data from one table. Only LEFT OUTER JOIN or RIGTH OUTER JOIN needs to be used.

C: You want all unmatched, not matched, data from both tables.

E: It is not a criterion to use a FULL OUTER JOIN if one of the tables has more data than the other.

F: You want all unmatched, not matched data or a combination of matched and unmatched data, from both tables, not one table.

OCP Introduction to Oracle 9i: SQL Exam Guide, Jason Couchman, p. 109-118

Chapter 3: Advanced Data Selection in Oracle

QUESTION 47:

Which two statements accurately describe a role? (Choose two.)

A. A role can be given to a maximum of 1000 users.

B. A user can have access to a maximum of 10 roles.

[1Z0-007](#)

- C. A role can have a maximum of 100 privileges contained in it.
- D. Privileges are given to a role by using the CREATE ROLE statement.
- E. A role is a named group of related privileges that can be granted to the user.
- F. A user can have access to several roles, and several users can be assigned the same role.

Answer: E, F

Explanation:

E: A role is a named group of Privileges that can be granted to a user.

F: A user can have access to several roles, and several users can be assigned the same role.

Incorrect Answers

A: There is no limitation to a 1000 users for one role in Oracle.

B: There is no limitation to a 10 roles for one user in Oracle.

C: There is no limitation to a 1000 privileges for one role in Oracle.

E: The role can act as a named group of privileges to execute certain tasks. But privileges can be not related at all.

OCP Introduction to Oracle 9i: SQL Exam Guide, Jason Couchman, p. 365-373

Chapter 8: User Access Control in Oracle

QUESTION 48:

What is necessary for your query on an existing view to execute successfully?

- A. The underlying tables must have data.
- B. You need SELECT privileges on the view.
- C. The underlying tables must be in the same schema.
- D. You need SELECT privileges only on the underlying tables.

Answer: B

Explanation:

To query an existing view you need to have SELECT privileges on the view.

Incorrect Answers

A: The underlying tables can be without data: view will work correctly in that case.

C: The underlying tables can be in different user schema.

D: You need SELECT privileges not only on the underlying tables, but on the view also.

OCP Introduction to Oracle 9i: SQL Exam Guide, Jason Couchman, p. 356-359

Chapter 8: User Access Control in Oracle

QUESTION 49:

The EMP table has these columns:

ENAME VARCHAR2(35)

SALARY NUMBER(8,2)

HIRE_DATE DATE

Management wants a list of names of employees who have been with the company for more than five years. Which SQL statement displays the required results?

- A. SELECT ENAME
FROM EMP
WHERE SYSDATE-HIRE_DATE >5;
- B. SELECT ENAME
FROM EMP
WHERE HIRE_DATE-SYSDATE >5;
- C. SELECT ENAME
FROM EMP
WHERE (SYSDATE-HIRE_DATE)/365 >5;
- D. SELECT ENAME
FROM EMP
WHERE (SYSDATE-HIRE_DATE)*365 >5;

Answer: C

Explanation:

Expression SYSDATE-HIRE_DATE will show number of days after date of hiring employee, so you need to divide result of expression on 365 and this compare result with 5.

Incorrect Answers

A: This query returns all employees who were hired more than 5 days ago.

B: This query will not return any record because result of HIRE_DATE-SYSDATE expression will be negative number.

D: You need to divide, not to multiply, SYSDATE-HIRE_DATE on the number of days in 1 year.

OCP Introduction to Oracle 9i: SQL Exam Guide, Jason Couchman, p. 81-85

Chapter 2: Limiting, Sorting, and Manipulating Return Data

QUESTION 50:

Examine the data in the EMPLOYEES table.

EMPLOYEES

EMPLOYEE_ID	EMP_NAME	DEPT_ID	MGR_ID	JOB_ID	SALARY
101	Smith	20	120	SA_REP	4000
102	Martin	10	105	CLERK	2500
103	Chris	20	120	IT_ADMIN	4200
104	John	30	108	HR_CLERK	2500
105	Diana	30	108	IT_ADMIN	5000
106	Smith	40	110	AD.ASST	3000

1Z0-007

108	Jennifer	30	110	HR_DIR	6500
110	Bob	40		EK_DIR	8000
120	Revi	20	110	SA_DIR	6500

On the EMPLOYEES table, EMPLOYEE_ID is the primary key. MGR_ID is the ID of managers and refers to the EMPLOYEE_ID. The JOB_ID column is a NOT NULL column.

Evaluate this DELETE statement:

```
DELETE employee_id, salary, job_id
```

```
FROM employees
```

```
WHERE dept_id = 90;
```

Why does the DELETE statement fail when you execute it?

- A. There is no row with dept_id 90 in the EMPLOYEES table.
- B. You cannot delete the JOB_ID column because it is a NOT NULL column.
- C. You cannot specify column names in the DELETE clause of the DELETE statement.
- D. You cannot delete the EMPLOYEE_ID column because it is the primary key of the table.

Answer: C

Explanation:

You cannot specify column names in the DELETE clause of the DELETE statement. Syntax of this command is: DELETE FROM table_name WHERE column_name = value.

Incorrect Answers

A: Error in this statement is related with list of columns in the DELETE statement, not with absence of row with DEPT_ID = 90 in the EMPLOYEES table.

B: Error in this statement is related with list of columns in the DELETE statement, not with NOT NULL constraint on the JOB_ID column.

D: Error in this statement is related with list of columns in the DELETE statement, not with the primary key constraint on the EMPLOYEE_ID column.

OCP Introduction to Oracle 9i: SQL Exam Guide, Jason Couchman, p. 270-273

Chapter 6: Manipulating Oracle Data

QUESTION 51:

Evaluate these two SQL statements:

```
SELECT last_name, salary , hire_date
```

```
FROM EMPLOYEES
```

```
ORDER BY salary DESC;
```

```
SELECT last_name, salary, hire_date
```

```
FROM EMPLOYEES
```

```
ORDER BY 2 DESC;
```

What is true about them?

- A. The two statements produce identical results.
- B. The second statement returns a syntax error.
- C. There is no need to specify DESC because the results are sorted in descending order by default.

D. The two statements can be made to produce identical results by adding a column alias for the salary column in the second SQL statement.

Answer: A

Explanation:

These two statements produce identical results, because it is possible even to use numbers to indicate the column position where Oracle should order the output from a statement.

Incorrect Answers

B: Second statement is correct and it will not return a syntax error.

C: The results are sorted in ascending order by default.

D: There is no corrections need to be made for the statements. They will return identical results.

OCP Introduction to Oracle 9i: SQL Exam Guide, Jason Couchman, p. 56-61

Chapter 2: Limiting, Sorting, and Manipulating Return Data

QUESTION 52:

You would like to display the system date in the format "Monday, 01 June, 2001".

Which SELECT statement should you use?

A. SELECT TO_DATE(SYSDATE, 'FMDAY, DD Month, YYYY')

FROM dual;

B. SELECT TO_CHAR(SYSDATE, 'FMDD, DY Month, 'YYYY')

FROM dual;

C. SELECT TO_CHAR(SYSDATE, 'FMDay, DD Month, YYYY')

FROM dual;

D. SELECT TO_CHAR(SYSDATE, 'FMDY, DDD Month, YYYY')

FROM dual;

E. SELECT TO_DATE(SYSDATE, 'FMDY, DDD Month, YYYY')

FROM dual;

Answer: C

Explanation:

This answer is correct: "Day" shows the day spelled out, "DD" shows the two-digit date, "Month" provides the month spelled out, "YYYY" shows the four-digit year. "FMDay" is special format mask to suppresses the extra spaces between the name of the day and the number of the date.

Incorrect Answers

A: This statement will return an error because of inappropriate usage of the TO_DATE() function.

B: Incorrect format mask "DY" is used to show the number of the day.

D: Incorrect format mask "DY" is used to show the name of the day and format mask "DDD" is used to show the number of the day.

E: Incorrect format mask "DY" is used to show the name of the day and format mask "DDD" is used to show the number of the day. Also this statement will return an error because of inappropriate usage of the TO_DATE() function.

QUESTION 53:

The CUSTOMERS table has these columns:

CUSTOMER_ID NUMBER(4) NOT NULL
CUSTOMER_NAME VARCHAR2(100) NOT NULL
STREET_ADDRESS VARCHAR2(150)
CITY_ADDRESS VARCHAR2(50)
STATE_ADDRESS VARCHAR2(50)
PROVINCE_ADDRESS VARCHAR2(50)
COUNTRY_ADDRESS VARCHAR2(50)
POSTAL_CODE VARCHAR2(12)
CUSTOMER_PHONE VARCHAR2(20)

Which statement finds the rows in the CUSTOMERS table that do not have a postal code?

- A. SELECT customer_id, customer_name
FROM customers
WHERE postal_code CONTAINS NULL;
- B. SELECT customer_id, customer_name
FROM customers
WHERE postal_code = '_____';
- C. SELECT customer_id, customer_name
FROM customers
WHERE postal_code IS NULL;
- D. SELECT customer_id, customer_name
FROM customers
WHERE postal_code IS NVL;
- E. SELECT customer_id, customer_name
FROM customers
WHERE postal_code = NULL;

Answer: C

Explanation:

This statement returns the rows in the CUSTOMERS table that do not have a postal code. The correct syntax to check NULL values is usage of "IS NULL" clause.

Incorrect Answers

A: "CONTAINS NULL" is incorrect clause in Oracle.

B: This statement will just check if postal code equals to string'_____';

D: Usage of "IS NVL" is incorrect in Oracle. But there is a function NVL() you can use to process NULL values.

E: You can not use equal comparison to check whether value is NULL or not. Use construction "IS NULL" or "IS NOT NULL" to do that.

QUESTION 54:

Which SELECT statement will the result 'ello world' from the string 'Hello World'?

- A. SELECT SUBSTR ('Hello,') FROM dual;
- B. SELECT INITCAP (TRIM ('Hello World',1,1) FROM dual;
- C. SELECT LOWER (SUBSTR ('Hello World',1,1) FROM dual;
- D. SELECT LOWER (SUBSTR ('Hello World',2,1) FROM dual;
- E. SELECT LOWER (TRIM ('H' FROM 'Hello World')) FROM dual;

Answer: E

Explanation:

This statement will return correct result because function TRIM() will trim letter 'H' in the 'Hello World' and function LOWER() will return data in string in lowercase..

Incorrect Answers

- A: This statement will return sub-string starting at the character in position number Y to the end.
- B: There is incorrect syntax in the TRIM() function.
- C: There is incorrect syntax in that statement because of absence right bracket.
- D: There is incorrect syntax in that statement because of absence right bracket.

OCP Introduction to Oracle 9i: SQL Exam Guide, Jason Couchman, p. 67-69
Chapter 2: Limiting, Sorting, and Manipulating Return Data

QUESTION 55:

Evaluate this SQL statement:

```
SELECT e.employee_id, (.15* e.salary) + (.5 * e.commission_pct)
+ (s.sales amount * (.35 * e.bonus)) AS CALC_VALUE
FROM employees e, sales s
WHERE e.employee_id = s.emp_id;
```

What will happen if you remove all the parentheses from the calculation?

- A. The value displayed in the CALC_VALUE column will be lower.
- B. The value displayed in the CALC_VALUE column will be higher.
- C. There will be no difference in the value displayed in the CALC_VALUE column.
- D. An error will be reported.

Answer: C

Explanation:

There will be no difference in the value displayed in the CALC_VALUE column because not arithmetic operations or usage of alias for the calculated expression in the SELECT clause will not cause change the value

appearance.

Incorrect Answers

A: There will be no difference in the value displayed in the CALC_VALUE column.

B: There will be no difference in the value displayed in the CALC_VALUE column.

D: There is no error in this statement.

OCP Introduction to Oracle 9i: SQL Exam Guide, Jason Couchman, p. 29-34

Chapter 1: Overview of Oracle Databases

QUESTION 56:

From SQL*Plus, you issue this SELECT statement:

```
SELECT*
```

```
FROM order;
```

You use this statement to retrieve data from a data table for _____. (Choose all that apply)

A. Updating

B. Viewing

C. Deleting

D. Inserting

E. Truncating

Answer: B, D

Explanation:

You can use SELECT statement to display and to insert data into different table.

Incorrect Answers

A: You cannot update data with SELECT statement. Update command is used for this purpose.

C: You cannot delete data with SELECT statement. Delete command is used for this purpose.

E: You cannot truncate data with SELECT statement. Truncate command is used for this purpose.

OCP Introduction to Oracle 9i: SQL Exam Guide, Jason Couchman, p. 20-21

Chapter 1: Overview of Oracle Databases

QUESTION 57:

You need to create a view EMP_VU. The view should allow the users to manipulate the records of only the employees that are working for departments 10 or 20.

Which SQL statement would you use to create the view EMP_VU?

A. CREATE VIEW emp_vu AS

```
SELECT *
```

```
FROM employees
```

```
WHERE department _ id IN (10,20);
```

B. CREATE VIEW emp_vu AS

```
SELECT *
```

```
FROM employees
```

```
WHERE department_id IN (10,20)
```

```
WITH READ ONLY;  
C. CREATE VIEW emp_vu AS  
SELECT *  
FROM employees  
WHERE department_id IN (10,20)  
WITH CHECK OPTION;  
D. CREATE FORCE VIEW emp_vu AS  
SELECT *  
FROM employees  
WITH department_id IN (10,20);  
E. CREATE FORCE VIEW emp_vu AS  
SELECT *  
FROM employees  
WHERE department_id IN (10,20)  
NO UPDATE;
```

Answer: C

Explanation:

Tables that underlie views often have constraints that limit the data that can be added to those tables. Views cannot add data to the underlying table that would violate the table's constraints. However, you can also define a view to restrict the user's ability to change underlying table data even further, effectively placing a special constraint for data manipulation through the view. This additional constraint says that INSERT or UPDATE statements issued against the view are cannot create rows that the view cannot subsequently select. This constraint is configured when the view is defined by adding the WITH CHECK OPTION to the CREATE VIEW statement.

Incorrect Answers

- A: This view does not provide correct semantic of question task.
 - B: WITH READ ONLY clause is incorrect syntax in the CREATE VIEW command.
 - D: This view does not provide correct semantic of question task.
 - E: NO UPDATE clause is incorrect syntax in the CREATE VIEW command.
- OCP Introduction to Oracle 9i: SQL Exam Guide, Jason Couchman, p. 301-303
Chapter 7: Creating Other Database Objects in Oracle

QUESTION 58:

Examine the structure of the STUDENTS table:
STUDENT_ID NUMBER NOT NULL, Primary Key
STUDENT_NAME VARCHAR2(30)
COURSE_ID VARCHAR2(10) NOT NULL
MARKS NUMBER
START_DATE DATE
FINISH_DATE DATE

You need to create a report of the 10 students who achieved the highest ranking in the course INT SQL and who completed the course in the year 1999.

Which SQL statement accomplishes this task?

A. SELECT student_id, marks, ROWNUM "Rank"
FROM students
WHERE ROWNUM <= 10
AND finish_date BETWEEN '01-JAN-99' AND '31-DEC-99'
AND course_id = 'INT_SQL'
ORDER BY marks DESC;

B. SELECT student_id, marks, ROWID "Rank"
FROM students
WHERE ROWID <= 10
AND finish_date BETWEEN '01-JAN-99' AND '31-DEC-99'
AND course_id = 'INT_SQL'
ORDER BY marks;

C. SELECT student_id, marks, ROWNUM "Rank"
FROM (SELECT student_id, marks
FROM students
WHERE ROWNUM <= 10
AND finish_date BETWEEN '01-JAN-99' AND
'31-DEC-99'
AND course_id = 'INT_SQL'
ORDER BY marks DESC);

D. SELECT student_id, marks, ROWNUM "Rank"
FROM (SELECT student_id, marks
FROM students
ORDER BY marks DESC)
WHERE ROWNUM <= 10
AND finish_date BETWEEN '01-JAN-99' AND '31-DEC-99'
AND course_id = 'INT_SQL';

Answer: D

Explanation:

This statement using inline sub-query will provide correct results to show 10 students who achieved the highest ranking in the course INT SQL and who completed the course in the year 1999.

Incorrect Answers

A: This view will just show first 10 students from the STUDENTS table with limitation on the course INT SQL and who completed the course in the year 1999.

B: It's wrong to use here ROWID to achieve desired results.

C: This statement will provide wrong result due to wrong conditions in the inline sub-query.

OCP Introduction to Oracle 9i: SQL Exam Guide, Jason Couchman, p. 162-165

Chapter 4: Subqueries

QUESTION 59:

Which four statements correctly describe functions that are available in SQL? (Choose four)

- A. INSTR returns the numeric position of a named character.
- B. NVL2 returns the first non-null expression in the expression list.
- C. TRUNCATE rounds the column, expression, or value to n decimal places.
- D. DECODE translates an expression after comparing it to each search value.
- E. TRIM trims the heading of trailing characters (or both) from a character string.
- F. NVL compares two expressions and returns null if they are equal, or the first expression if they are not equal.
- G. NULLIF compares two expressions and returns null if they are equal, or the first expression if they are not equal.

Answer: A, D, E, G

Explanation:

INSTR returns the numeric position of a named character. DECODE translates an expression after comparing it to each search value. TRIM trims the heading of trailing characters (or both) from a character string. NULLIF compares two expressions and returns null if they are equal, or the first expression if they are not equal.

Incorrect Answers

B: This statement is not correct. The following is the Syntax for NVL2 function: NVL2(expr1, expr2, expr3). If expr1 is not null, NVL2 returns expr2. If expr1 is null, NVL2 returns expr3.

C: Command TRUNCATE is used to remove all row data from the table, while leaving the definition of the table intact, including the definition of constraints and any associated database objects as indexes, constraints, and triggers on the table.

F: NVL returns second parameter value if first one is NULL.

OCP Introduction to Oracle 9i: SQL Exam Guide, Jason Couchman, p. 67-73

Chapter 2: Limiting, Sorting, and Manipulating Return Data

QUESTION 60:

Examine the data from the EMP table:

EMP_ID	DEPT_ID	COMMISSION
1	10	500
2	20	1000
3	10	
4	10	600
5	30	800
6	30	200
7	10	
8	20	300

The COMMISSION column shows the monthly commission earned by the employee.

Which three tasks would require subqueries or joins in order to perform in a single step? (Choose three)

- A. Deleting the records of employees who do not earn commission.
- B. Increasing the commission of employee 3 by the average commission earned in department 20.

- C. Finding the number of employees who do NOT earn commission and are working for department 20.
- D. Inserting into the table a new employee 10 who works for department 20 and earns a commission that is equal to the commission earned by employee 3.
- E. Creating a table called COMMISSION that has the same structure and data as the columns EMP_ID and COMMISSIONS of the EMP table.
- F. Decreasing the commission by 150 for the employees who are working in department 30 and earning a commission of more then 800.

Answer: B, D, E

Explanation:

Increasing the commission of employee 3 by the average commission earned in department 20 will require sub-queries or joins in order to perform in a single step. Inserting into the table a new employee 10 who works for department 20 and earns a commission that is equal to the commission earned by employee 3 is correct answer also. To create a table that has the same structure as subset of columns from another table it's required to use a subquery in order to perform in a single step.

Incorrect Answers

A: This query can be done without using sub-queries or joins in order to perform in a single step.

C: It is not required to use sub-queries or joins to create SQL statement for that query.

F: This query can be done without using sub-queries or joins in order to perform in a single step: only two conditions in the WHERE clause should be specified.

QUESTION 61:

The CUSTOMERS table has these columns:

CUSTOMER_ID NUMBER(4) NOT NULL
CUSTOMER_NAME VARCHAR2(100) NOT NULL
STREET_ADDRESS VARCHAR2(150)
CITY_ADDRESS VARCHAR2(50)
STATE_ADDRESS VARCHAR2(50)
PROVINCE_ADDRESS VARCHAR2(50)
COUNTRY_ADDRESS VARCHAR2(50)
POSTAL_CODE VARCHAR2(12)
CUSTOMER_PHONE VARCHAR2(20)

The CUSTOMER_ID column is the primary key for the table.

Which two statements find the number of customers? (Choose two.)

- A. SELECT TOTAL(*)
FROM customer;
- B. SELECT COUNT(*)
FROM customer;
- C. SELECT TOTAL(customer_id)
FROM customer;
- D. SELECT COUNT(customer_id)
FROM customer;
- E. SELECT COUNT(customers)

```
FROM customer;  
F. SELECT TOTAL(customer_name)  
FROM customer;
```

Answer: B, D

Explanation:

These statements provide correct syntax and semantics to show the number of customers. Function COUNT() can be used with substitution symbol of all columns "*" or just with one column name. Last query will be processed a little bit faster.

Incorrect Answers

A: There is no TOTAL() function in Oracle.

C: There is no TOTAL() function in Oracle.

E: You cannot table name as a parameter of COUNT() function.

F: There is no TOTAL() function in Oracle.

OCP Introduction to Oracle 9i: SQL Exam Guide, Jason Couchman, p. 123-125

Chapter 3: Advanced Data Selection in Oracle

QUESTION 62:

Which two tasks can you perform by using the TO_CHAR function? (Choose two)

A. Convert 10 to 'TEN'

B. Convert '10' to 10

C. Convert '10' to '10'

D. Convert 'TEN' to 10

E. Convert a date to a character expression

F. Convert a character expression to a date

Answer: C, E

Explanation:

TO_CHAR(x) function is used to convert the value x to a character or converts a date to a character string using formatting conventions.

Incorrect Answers

A: This function cannot convert the number to the string representing number spelled out.

B: TO_CHAR() function cannot convert the character value to a number. TO_NUMBER() function does this.

D: This function is not able to convert the string representing number spelled out to the number itself.

F: TO_CHAR() function cannot convert a character expression to a date. TO_DATE() function does this.

OCP Introduction to Oracle 9i: SQL Exam Guide, Jason Couchman, p. 86-87

Chapter 2: Limiting, Sorting, and Manipulating Return Data

QUESTION 63:

Which two statements are true regarding the ORDER BY clause? (Choose two)

- A. The sort is in ascending order by default.
- B. The sort is in descending order by default.
- C. The ORDER BY clause must precede the WHERE clause.
- D. The ORDER BY clause is executed on the client side.
- E. The ORDER BY clause comes last in the SELECT statement.
- F. The ORDER BY clause is executed first in the query execution.

Answer: A, E

Explanation:

The ORDER BY clause does sort data in ascending order by default. And the ORDER BY clause comes last in the SELECT statement: after FROM or WHERE or GROUP BY clause.

Incorrect Answers

B: The ORDER BY clause does sort data in ascending, not descending order, by default.

C: The ORDER BY clause must be after the WHERE clause in the SQL statement.

D: The ORDER BY clause is executed on the server side as the whole SQL statement is.

F: The ORDER BY clause is executed last in the query execution, after results are limited with the WHERE and GROUP BY clause conditions.

OCP Introduction to Oracle 9i: SQL Exam Guide, Jason Couchman, p. 56-61

Chapter 2: Limiting, Sorting, and Manipulating Return Data

QUESTION 64:

Examine the structures of the EMPLOYEES and TAX tables.

EMPLOYEES

EMPLOYEE_ID	NUMBER	NOT NULL, Primary Key
EMP_NAME	VARCHAR2 (30)	
JOB_ID	VARCHAR2 (20)	
SALARY	NUMBER	
MGR_ID	NUMBER	References EMPLOYEE_ID column
DEPARTMENT_ID	NUMBER	Foreign key to DEPARTMENT_ID column of the DEPARTMENT table

TAX

MIN_SALARY	NUMBER	
MAX_SALARY	NUMBER	
TAX_PERCENT	NUMBER	Percentage tax for given salary range

1Z0-007

You need to find the percentage tax applicable for each employee. Which SQL statement would you use?

- A. SELECT employee_id, salary, tax_percent
FROM employees e, tax t
WHERE e.salary BETWEEN t.min_salary AND t.max_salary
- B. SELECT employee_id, salary, tax_percent
FROM employees e, tax t
WHERE e.salary > t.min_salary, tax_percent
- C. SELECT employee_id, salary, tax_percent
FROM employees e, tax t
WHERE MIN(e.salary) = t.min_salary
AND MAX(e.salary) = t.max_salary
- D. You cannot find the information because there is no common column between the two tables.

Answer: A

Explanation:

You can find the percentage tax applicable for each employee by using SQL statement in answer A.

Incorrect Answers

- B: Syntax "WHERE e.salary > t.min_salary, tax_percent" is incorrect.
 - C: Functions, like MIN() and MAX(), cannot be used in the WHERE clause.
 - D: The SQL statement from the answer A will provide requested information.
- OCP Introduction to Oracle 9i: SQL Exam Guide, Jason Couchman, p. 98-103
Chapter 3: Advanced Data Selection in Oracle

QUESTION 65:

Which are DML statements? (Choose all that apply)

- A. COMMIT...
- B. MERGE...
- C. UPDATE...
- D. DELETE...
- E. CREATE...
- F. DROP...

Answer: B, C, D

Explanation:

MERGE, UPDATE and DELETE commands are data manipulation language (DML) statements.

Incorrect Answers

- A: COMMIT is not a DML command.
 - E: CREATE is a data definition language (DDL) command.
 - F: DROP is a data definition language (DDL) command.
- OCP Introduction to Oracle 9i: SQL Exam Guide, Jason Couchman, p. 267-279
Chapter 6: Manipulating Oracle Data

QUESTION 66:

Mary has a view called EMP_DEPT_LOC_VU that was created based on the EMPLOYEES, DEPARTMENTS, and LOCATIONS tables. She granted SELECT privilege to Scott on this view. Which option enables Scott to eliminate the need to qualify the view with the name MARY.EMP_DEP_LOC_VU each time the view is referenced?

- A. Scott can create a synonym for the EMP_DEPT_LOC_VU bus using the command:
CREATE PRIVATE SYNONYM EDL_VU
FOR mary. EMP DEPT_LOC_VU;
then he can prefix the columns with this synonym.
- B. Scott can create a synonym for the EMP_DEPT_LOC_VU by using the command:
CREATE SYNONYM EDL_VU
FOR mary. EMP DEPT_LOC_VU;
then he can prefix the columns with this synonym.
- C. Scott can create a synonym for the EMP_DEPT_LOC_VU by using the command:
CREATE LOCAL SYNONYM EDL_VU
FOR mary. EMP DEPT_LOC_VU;
then he can prefix the columns with this synonym.
- D. Scott can create a synonym for the EMP_DEPT_LOC_VU by using the command:
CREATE SYNONYM EDL_VU
FOR mary. EMP DEPT_LOC_VU;
then he can prefix the columns with this synonym.
- E. Scott cannot create a synonym because synonyms can be created only for tables.
- F. Scott cannot create any synonym for Mary's view. Mary should create a private synonym for the view and grant SELECT privilege on that synonym to Scott.

Answer: B

Explanation:

Correct syntax to create a local synonym is CREATE SYNONYM synonym_name. With PUBLIC keyword you can create public synonym.

Incorrect Answers

A: There is no PRIVATE keyword for the CREATE SYNONYM command.

C: There is no LOCAL keyword for the CREATE SYNONYM command.

D: This SQL statement shows incorrect syntax to create a synonym.

E: Synonyms can be created not only for tables but for other objects also.

F: Scott can create synonym for Mary's view because she granted SELECT privilege to Scott on this view.

OCP Introduction to Oracle 9i: SQL Exam Guide, Jason Couchman, p. 331-335

Chapter 7: Creating Other Database Objects in Oracle

QUESTION 67:

Examine the structure of the EMPLOYEES table:

EMPLOYEE_ID NUMBER Primary Key

```
FIRST_NAME VARCHAR2(25)
LAST_NAME VARCHAR2(25)
HIRE_DATE DATE
```

You issue these statements:

```
CREATE table new_emp ( employee_id NUMBER, name VARCHAR2(30));
INSERT INTO new_emp SELECT employee_id, last_name from employees;
Savepoint s1;
UPDATE new_emp set name = UPPER(name);
Savepoint s2;
Delete from new_emp;
Rollback to s2;
Delete from new_emp where employee_id=180;
UPDATE new_emp set name = 'James';
Rollback to s2;
UPDATE new_emp set name = 'James' Where employee_id=180;
Rollback;
```

At the end of this transaction, what is true?

- A. You have no rows in the table.
- B. You have an employee with the name of James.
- C. You cannot roll back to the same savepoint more than once.
- D. Your last update fails to update any rows because employee ID 180 was already deleted.

Answer: A

Explanation:

At the end of this transaction you will not have rows in the table.

Incorrect Answers

B: All transactions will be roll backed, so it will be no rows in the table.

C: It is possible to roll back to the same savepoint more than once.

D: Your last update will not fail because there is employee with ID 180 in the table and transactions have been rolled back only to the savepoint s2 before issue this update.

OCP Introduction to Oracle 9i: SQL Exam Guide, Jason Couchman, p. 279-285

Chapter 6: Manipulating Oracle Data

QUESTION 68:

Which two are attributes of /SQL*Plus? (Choose two)

- A. /SQL*Plus commands cannot be abbreviated.
- B. /SQL*Plus commands are accesses from a browser.
- C. /SQL*Plus commands are used to manipulate data in tables.
- D. /SQL*Plus commands manipulate table definitions in the database.
- E. /SQL*Plus is the Oracle proprietary interface for executing SQL statements.

Answer: D, E

Explanation:

D: SQL*Plus commands can be used to manipulate data in tables.

E: iSQL*Plus is a proprietary interface for executing SQL Statements

Incorrect Answers

A: SQL*Plus commands can be abbreviated. Like command DESCRIBE can be abbreviated as DESC, or SELECT as SELE.

B: SQL*Plus commands are not accesses from a browser.

C: SQL DML not SQL Plus is used to manipulate data

OCP Introduction to Oracle 9i: SQL Exam Guide, Jason Couchman, p. 38-48

Chapter 1: Overview of Oracle Databases

QUESTION 69:

In which scenario would index be most useful?

A. The indexed column is declared as NOT NULL.

B. The indexed columns are used in the FROM clause.

C. The indexed columns are part of an expression.

D. The indexed column contains a wide range of values.

Answer: D

Explanation:

Index will be useful if the indexed column contains a wide range of values. Especially B-tree indexes will work better for tables with a wide range of values. But for tables just with some distinct values bitmap indexes will be more helpful.

Incorrect Answers

A: Oracle automatically creates index for NOT NULL columns, so you don't need create an index yourself.

B: There are only table names in the FROM clause, not columns.

C: Index may be will not work if the indexed columns are part of an expression. You need to avoid expressions if you want to use index.

OCP Introduction to Oracle 9i: SQL Exam Guide, Jason Couchman, p. 322-331

Chapter 3: Creating Other Database Objects in Oracle

QUESTION 70:

Which SQL statement generates the alias Annual Salary for the calculated column SALARY*12?

A. SELECT ename, salary*12 'Annual Salary'

FROM employees;

B. SELECT ename, salary*12 "Annual Salary"

FROM employees;

C. SELECT ename, salary*12 AS Annual Salary

FROM employees;

D. SELECT ename, salary*12 AS INITCAP("ANNUAL SALARY")

FROM employees

Answer: B

Explanation:

This SQL statement provides correct syntax to generate the alias Annual Salary for the calculated column SALARY*12.

Incorrect Answers

A: Alias can be surrounded with double quotation marks, not with single. Oracle error will be generated in this case.

C: Alias needs to be surrounded with double quotation marks, it cannot just follow by the AS keyword.

D: You cannot use any function as alias, so this SQL statement will fail.

OCP Introduction to Oracle 9i: SQL Exam Guide, Jason Couchman, p. 33-35
Chapter 1: Overview of Oracle Databases

QUESTION 71:

Examine the structure of the EMPLOYEES table:

EMPLOYEE_ID NUMBER Primary Key

FIRST_NAME VARCHAR2(25)

LAST_NAME VARCHAR2(25)

DEPARTMENT_ID NUMBER

SALARY NUMBER

What is the correct syntax for an inline view?

A. SELECT a.last_name, a.salary, a.department_id,

b.maxsal

FROM employees a,

(SELECT department_id, max(salary)maxsal

FROM employees

GROUP BY department_id) b

WHERE a.department_id = b.department_id

AND a.salary < b.maxsal;

B. SELECT a.last name, a.salary, a.department_id

FROM employees a

WHERE a.department_id IN

(SELECT department_id

FROM employees b

GROUP BY department_id having salary =

(SELECT max(salary) from employees))

C. SELECT a.last_name, a.salary, a.department_id

FROM employees a

WHERE a.salary =

(SELECT max(salary)

FROM employees b

WHERE a.department _ id = b.department _ id);

```
D. SELECT a.last_name, a.salary, a.department_id
FROM employees a
WHERE (a.department_id, a.salary) IN
(SELECT department_id, a.salary) IN
(SELECT department_id max(salary)
FROM employees b
GROUP BY department_id
ORDER BY department _ id);
```

Answer: A

Explanation:

This SQL statement shows correct syntax to build inline views. You must enclose the query text for the inline view in parentheses and also give a label for the inline view so that columns in it can be referenced later. In answer A inline view is marked as B.

Incorrect Answers

B: This SQL statement will fail because it is not correct syntax for inline views. There is no a label for this inline view also.

C: This SQL statement will fail because it is not correct syntax for inline views. There is no a label for this inline view also.

D: This SQL statement will fail because it is not correct syntax for inline views. There is no a label for this inline view also.

OCP Introduction to Oracle 9i: SQL Exam Guide, Jason Couchman, p. 162-165
Chapter 4: Subqueries

QUESTION 72:

Which clause would you use in a SELECT statement to limit the display to those employees whose salary is greater than 5000?

- A. ORDER BY SALARY > 5000
- B. GROUP BY SALARY > 5000
- C. HAVING SALARY > 5000
- D. WHERE SALARY > 5000

Answer: D

Explanation:

You need to use the WHERE clause to limit the display to those employees whose salary is greater than 5000.

Incorrect Answers

A: The ORDER BY clause will just sort data, but it will not limit them.

B: You cannot use the GROUP BY clause with conditions. Oracle error will be generated.

C: The HAVING clause may be used only in conjunction with the GROUP BY clause.

OCP Introduction to Oracle 9i: SQL Exam Guide, Jason Couchman, p. 61-67
Chapter 2: Limiting, Sorting, and Manipulating Return Data

QUESTION 73:

When should you create a role? (Choose two)

- A. To simplify the process of creating new users using the CREATE USER xxx IDENTIFIED by yyy statement.
- B. To grant a group of related privileges to a user.
- C. When the number of people using the database is very high.
- D. To simplify the process of granting and revoking privileges.
- E. To simplify profile maintenance for a user who is constantly traveling.

Answer: C, D

Explanation:

You should use roles to grant a group of privileges to a user. You grant the appropriate privileges to the role and after that grant this role to specific users. By granting to or revoking privileges from the role you can simplify procedure of users privileges maintainance: you don't need to grant/revoke privileges to/from each user. It's especially very helpful when you are experiencing a high number of people using the database.

Incorrect Answers

A: Roles have nothing to do with simplifying the process of creating new users.

B: You can use roles to grant a group of privileges to a user, but they can be not related at all.

E: Roles have nothing to do with user who is constantly traveling.

OCP Introduction to Oracle 9i: SQL Exam Guide, Jason Couchman, p. 365-372

Chapter 8: User Control in Oracle

QUESTION 74:

Which three statements about subqueries are true? (Choose three)

- A. A single row subquery can retrieve only one column and one row.
- B. A single row subquery can retrieve only one row but many columns.
- C. A multiple row subquery can retrieve multiple rows and multiple columns.
- D. A multiple row subquery can be compared by using the ">" operator.
- E. A single row subquery can use the IN operator.
- F. A multiple row subquery can use the "=" operator.

Answer: B, C, D

Explanation:

A single row sub-query can retrieve only one row but many columns. A multiple row sub-query can retrieve one row or multiple rows and multiple columns. A multiple row sub-query can be compared by using the ">" operator.

Incorrect Answers

A: A single row sub-query can retrieve only one row, but many columns..

E: A single row sub-query cannot use the IN operator.

F: A multiple row sub-query cannot use the "=" operator.
OCP Introduction to Oracle 9i: SQL Exam Guide, Jason Couchman, p. 150-165
Chapter 4: Subqueries

QUESTION 75:

Examine the structure of the EMPLOYEES table:

```
EMPLOYEE_ID NUMBER NOT NULL  
EMP_NAME VARCHAR2(30)  
JOB_ID VARCHAR2(20) DEFAULT 'SA_REP'  
SAL NUMBER  
COMM_PCT NUMBER  
MGR_ID NUMBER  
DEPARTMENT_ID NUMBER
```

You need to update the records of employees 103 and 115. The UPDATE statement you specify should update the rows with the values specified below:

JOB_ID: Default value specified for this column definition.

SAL: Maximum salary earned for the job ID SA_REP.

COMM_PCT: Default value specified for this commission percentage column, if any.

If no default value is specified for the column, the value should be NULL.

DEPARTMENT_ID: Supplied by the user during run time through substitution variable.

Which UPDATE statement meets the requirements?

A. UPDATE employees

```
SET job_id = DEFAULT  
AND Sal = (SELECT MAX(sal)  
FROM employees  
WHERE job_id = 'SA_REP')  
AND comm_pct = DEFAULT  
AND department_id = &did  
WHERE employee_id IN (103,115);
```

B. UPDATE employees

```
SET job_id = DEFAULT  
AND Sal = MAX(sal)  
AND comm_pct = DEFAULT OR NULL  
AND department_id = &did  
WHERE employee_id IN (103,115)  
AND job_id = 'SA_REP';
```

C. UPDATE employees

```
SET job_id = DEFAULT,  
Sal = (SELECT MAX(sal)  
FROM employees  
WHERE job_id = 'SA_REP'),  
comm_pct = DEFAULT,  
department_id = &did  
WHERE employee_id IN (103,115);
```

```
D. UPDATE employees
SET job_id = DEFAULT,
Sal = MAX(sal),
comm_pct = DEFAULT,
department_id = &did
WHERE employee_id IN (103,115)
AND job_id = 'SA_REP';
E. UPDATE employees
SET job_id = DEFAULT,
Sal = (SELECT MAX(sal)
FROM employees
WHERE job_id = 'SA_REP')
comm_pct = DEFAULT OR NULL,
department_id = &did
WHERE employee_id IN (103,115);
```

Answer: C

Explanation:

This UPDATE statement is correct to receive desired results. Correct syntax is UPDATE table_name SET column_name1 = value, column_name2 = value2. You can also use the DEFAULT keyword to set a column value to its specified default value in update statements as well.

Incorrect Answers

A: You cannot use syntax like UPDATE table_name SET column_name1 = value AND column_name2 = value2. Correct syntax is UPDATE table_name SET column_name1 = value, column_name2 = value2.

B: You cannot use syntax like UPDATE table_name SET column_name1 = value AND column_name2 = value2. Correct syntax is UPDATE table_name SET column_name1 = value, column_name2 = value2.

D: Group function is not allowed to use in the SET clause of the UPDATE command.

E: You cannot set column to value DEFAULT OR NULL: this is wrong syntax to use.

OCP Introduction to Oracle 9i: SQL Exam Guide, Jason Couchman, p. 267-270

Chapter 6: Manipulating Oracle Data

QUESTION 76:

Which two statements about sequences are true? (Choose two)

A. You use a NEXTVAL pseudo column to look at the next possible value that would be generated from a sequence, without actually retrieving the value.

B. You use a CURRVAL pseudo column to look at the current value just generated from a sequence, without affecting the further values to be generated from the sequence.

C. You use a NEXTVAL pseudo column to obtain the next possible value from a sequence by actually retrieving the value from the sequence.

D. You use a CURRVAL pseudo column to generate a value from a sequence that would be used for a specified database column.

E. If a sequence starting from a value 100 and incremented by 1 is used by more than one application, then all of these applications could have a value of 105 assigned to their column whose value is being generated by the

sequence.

F. You use REUSE clause when creating a sequence to restart the sequence once it generates the maximum value defined for the sequence.

Answer: B, C

Explanation:

You use a CURRVAL pseudo column to look at the current value just generated from a sequence, without affecting the further values to be generated from the sequence. You use a NEXTVAL pseudo column to obtain the next possible value from a sequence by actually retrieving the value from the sequence.

Incorrect Answers

A: You use a NEXTVAL pseudo column to obtain the next possible value from a sequence by actually retrieving the value from the sequence.

D: You use a CURRVAL pseudo column to look at the current value just generated from a sequence, without affecting the further values to be generated from the sequence.

E: This statement is not correct. There is no limitation like that in Oracle.

F: You use CYCLE clause, not REUSE, when creating a sequence to restart the sequence once it generates the maximum value defined for the sequence.

OCP Introduction to Oracle 9i: SQL Exam Guide, Jason Couchman, p. 315-322

Chapter 7: Creating Other Database Objects in Oracle

QUESTION 77:

Which four are correct guidelines for naming database tables? (Choose four)

A. Must begin with either a number or a letter.

B. Must be 1-30 characters long.

C. Should not be an Oracle Server reserved word.

D. Must contain only A-Z, a-z, 0-+, _, *, and #.

E. Must contain only A-Z, a-z, 0-9, _, \$, and #.

F. Must begin with a letter.

Answer: B, C, E, F

Explanation:

Oracle database object must begin with a letter and can usually be between 1 and 30 characters long, except for databases (which have a maximum of eight characters) and database links (with a maximum of 128 characters). Name cannot be an Oracle Server reserved word. Name must contain only A-Z, a-z, 0-9, _, \$, and #.

Incorrect Answers

A: Database tables may not begin with number.

D: It cannot contain symbols "+" or "*".

OCP Introduction to Oracle 9i: SQL Exam Guide, Jason Couchman, p. 208-211

Chapter 5: Creating Oracle Database Objects

QUESTION 78:

Examine the structure of the EMPLOYEES table:

Column name	Data type	Remarks
EMPLOYEE_ID	NUMBER NOT NULL	Primary Key
LAST_NAME	VARCNAR2(30)	
FIRST_NAME	VARCNAR2(30)	
JOB_ID	NUMBER	
SAL	NUMBER	
MGR_ID	NUMBER	References EMPLOYEE_ID column
DEPARTMENT_ID	NUMBER	

You need to create an index called NAME_IDX on the first name and last name fields of the EMPLOYEES table. Which SQL statement would you use to perform this task?

- A. CREATE INDEX NAME_IDX (first_name, last_name);
- B. CREATE INDEX NAME_IDX (first_name, AND last_name)
- C. CREATE INDEX NAME_IDX
ON (First_name, last_name);
- D. CREATE INDEX NAME_IDX
ON employees (First_name, AND last_name);
- E. CREATE INDEX NAME_IDX
ON employees (First_name, last_name);
- F. CREATE INDEX NAME_IDX
FOR employees (First_name, last_name);

Answer: E

Explanation:

Answer E provides correct syntax to create index: CREATE INDEX index_name ON table_name(list of columns).

Incorrect Answers

- A: You need to use keyword ON also to create index.
- B: You cannot use keyword AND to build a list of columns for index. Also this statement is missing the table name on which the index is creating.
- C: This statement is missing the table name on which the index is creating.
- D: You cannot use keyword AND to build a list of columns for index.
- F: You cannot use keyword FOR to create an index.

OCP Introduction to Oracle 9i: SQL Exam Guide, Jason Couchman, p. 322-331
Chapter 7: Creating Other Database Objects in Oracle

QUESTION 79:

Which operator can be used with a multiple-row subquery?

- A. =
- B. LIKE
- C. BETWEEN
- D. NOT IN

- E. IS
- F. <>

Answer: D

Explanation:

Only NOT IN operator can be used with a multi-row sub-query. All others may be used with single-row sub-query only.

Incorrect Answers

A: When sub-queries are linked to the parent by equality comparisons, the parent query expects only one row of data from the sub-query, so "=" operator cannot be used with a multiple-row sub-query.

B: Operator LIKE will work only with single-row sub-queries.

C: Operator BETWEEN will not work with a multi-row sub-queries.

E: Operator LIKE is used only for single-row sub-queries.

F: When sub-queries are linked to the parent by equality comparisons, the parent query expects only one row of data from the sub-query, so "<>" operator cannot be used with a multiple-row sub-query.

OCP Introduction to Oracle 9i: SQL Exam Guide, Jason Couchman, p. 150-165

Chapter 4: Subqueries

QUESTION 80:

Examine the structure of the EMPLOYEES, DEPARTMENTS, and TAX tables.

EMPLOYEES

EMPLOYEE_ID	NUMBER	NOT NULL, Primary Key
EMP_NAME	VARCHAR2 (30)	
JOB_ID	VARCHAR2 (20)	
SALARY	NUMBER	
MGR_ID	NUMBER	References EMPLOYEE_ID column
DEPARTMENT_ID	NUMBER	Foreign key to DEPARTMENT_ID column of the DEPARTMENTS table

DEPARTMENTS

DEPARTMENT_ID	NUMBER	NOT NULL, Primary Key
DEPARTMENT_NAME	VARCHAR2 30	
MGR_ID	NUMBER	References MGR_ID column

		of the EMPLOYEES table
--	--	---------------------------

TAX

MIN_SALARY	NUMBER	
MAX_SALARY	NUMBER	
TAX_PERCENT	NUMBER	

For which situation would you use a nonequijoin query?

- A. To find the tax percentage for each of the employees.
- B. To list the name, job id, and manager name for all the employees.
- C. To find the name, salary, and department name of employees who are not working with Smith.
- D. To find the number of employees working for the Administrative department and earning less then 4000.
- E. To display name, salary, manager ID, and department name of all the employees, even if the employees do not have a department ID assigned.

Answer: A

Explanation:

You will use a nonequijoin query to find the tax percentage for each of the employees because you will check range of salaries without usage of equality operations in a comparison joining data from two tables.

Incorrect Answers

B: You will use equijoin query because EMPLOYEES and DEPARTMENTS tables will be joined with equality operator.

C: It will be equijoin query because EMPLOYEES and DEPARTMENTS tables will be joined with equality operator.

D: You will use equijoin query because EMPLOYEES and DEPARTMENTS tables will be joined with equality operator.

E: It will be equijoin query because of equality operator in join condition of two tables.

OCP Introduction to Oracle 9i: SQL Exam Guide, Jason Couchman, p. 99-107

Chapter 3: Advanced Data Selection in Oracle

QUESTION 81:

Examine the data from the ORDERS and CUSTOMERS tables.

ORDERS

ORD_ID	ORD_DATE	CUST_ID	ORD_TOTAÖ
100	12-JAN-2000	15	10000
101	09-MAR-2000	40	8000
102	09-MAR-2000	35	12500

103	15-MAR-2000	15	12000
104	25-JUN-2000	15	6000
105	18-JUL-2000	20	5000
106	18-JUL-2000	35	7000
107	21-JUL-2000	20	6500
109	04-AUG-2000	10	8000

CUSTOMERS

CUST_ID	CUST_NAME	CITY
10	Smith	Los Angeles
15	Bob	San Francisco
20	Martin	Chicago
25	Mary	New York
30	Rina	Chicago
35	Smith	New York
40	Lind	New York

Evaluate the SQL statement:

```
SELECT *  
FROM orders  
WHERE cust_id = (SELECT cust_id  
FROM customers  
WHERE cust_name = 'Smith');
```

What is the result when the query is executed?

A.

ORD_ID	ORD_DATE	CUST_ID	ORD_TOTAL
102	09-MAR-2000	35	12500
106	18-JUL-2000	35	7000
108	04-AUG-2000	10	8000

B.

ORD_ID	ORD_DATE	CUST_ID	ORD_TOTAL
102	09-MAR-2000	35	12500
106	18-JUL-2000	35	7000

C.

ORD_ID	ORD_DATE	CUST_ID	ORD_TOTAL
108	04-AUG-2000	10	8000

D. The query fails because the subquery returns more than one row.

E. The query fails because the outer query and the inner query are using different tables.

Answer: D

Explanation:

The query fails because the sub-query returns more than one row: it is possible situation when there are some customers with name Smith.

Incorrect Answers

A: The query fails because the sub-query returns more than one row

B: The query fails because the sub-query returns more than one row

C: The query fails because the sub-query returns more than one row

E: The query fails because the sub-query returns more than one row, not because the outer query and the inner query are using different tables.

OCP Introduction to Oracle 9i: SQL Exam Guide, Jason Couchman, p. 150-165

Chapter 4: Subqueries

QUESTION 82:

You need to display the last names of those employees who have the letter "A" as the second character in their names.

Which SQL statement displays the required results?

A. SELECT last_name
FROM EMP
WHERE last_name LIKE '_A%';

B. SELECT last_name
FROM EMP
WHERE last_name = '*A%'

C. SELECT last_name
FROM EMP
WHERE last_name = '_A%';

D. SELECT last_name
FROM EMP
WHERE last_name LIKE '*A%'

Answer: A

Explanation:

Statement in this answer will show correct results because usage of operator LIKE and format mask '_A%' extract the last names of those employees who have the letter "A" as the second character in their names.

Symbol '_' in format mask substitute exactly one symbol and cannot be NULL.

Incorrect Answers

- B: This statement will return only names starting from symbol '*'. It cannot be used as substitution symbol.
- C: Usage of equity operator here is not appropriate in this case: query will look exact for first symbol '_', it will not be considered as substitution symbol.
- D: This statement will return only names starting from symbol '*'. It cannot be used as substitution symbol.
- OCP Introduction to Oracle 9i: SQL Exam Guide, Jason Couchman, p. 61-67
Chapter 2: Limiting, Sorting, and Manipulating Return Data
-

QUESTION 83:

You need to perform certain data manipulation operations through a view called EMP_DEPT_VU, which you previously created. You want to look at the definition of the view (the SELECT statement on which the view was create.) How do you obtain the definition of the view?

- A. Use the DESCRIBE command in the EMP_DEPT VU view.
- B. Use the DEFINE VIEW command on the EMP_DEPT VU view.
- C. Use the DESCRIBE VIEW command on the EMP_DEPT VU view.
- D. Query the USER_VIEWS data dictionary view to search for the EMP_DEPT_VU view.
- E. Query the USER_SOURCE data dictionary view to search for the EMP_DEPT_VU view.
- F. Query the USER_OBJECTS data dictionary view to search for the EMP_DEPT_VU view.

Answer: D

Explanation:

To look on the view definition you need to query the USER_VIEWS data dictionary view and search for the EMP_DEPT_VU view.

Incorrect Answers

- A: You cannot see the definition of the view using the DESCRIBE command.
- B: There is no DEFINE VIEW command in Oracle.
- C: There is no DESCRIBE VIEW command in Oracle.
- E: You cannot use the USER_SOURCE data dictionary view to see the definition of your view: it is used to store system objects definitions only.
- F: You can find record about view in the USER_OBJECTS, but it does not contain the definition of the view itself.
- OCP Introduction to Oracle 9i: SQL Exam Guide, Jason Couchman, p. 291-301
Chapter 7: Creating Other Database Objects in Oracle
-

QUESTION 84:

Evaluate this SQL statement:

```
SELECT e.EMPLOYEE_ID,e.LAST_NAME,e.DEPARTMENT_ID, d.DEPARTMENT_NAME
FROM EMP e, DEPARTMENT d
WHERE e.DEPARTMENT_ID = d.DEPARTMENT_ID;
```

In the statement, which capabilities of a SELECT statement are performed?

- A. Selection, projection, join
- B. Difference, projection, join
- C. Selection, intersection, join
- D. Intersection, projection, join
- E. Difference, projection, product

Answer: A

Explanation:

Selection, projection and join capabilities of a SELECT statement are performed in this view.

Incorrect Answers

B: Selection is performed in this query, not difference. There is no capability with name difference for a SELECT statement exists.

C: There is no intersection in this SELECT statement used.

D: There is no intersection in this SELECT statement used.

E: There is no difference or product capabilities exist for a SELECT statement.

OCP Introduction to Oracle 9i: SQL Exam Guide, Jason Couchman, p. 20-21

Chapter 1: Overview of Oracle Databases

QUESTION 85:

Which two are character manipulation functions? (Choose two.)

- A. TRIM
- B. REPLACE
- C. TRUNC
- D. TO_DATE
- E. MOD
- F. CASE

Answer: A, B

Explanation:

TRIM() and REPLACE() are character manipulation functions.

Incorrect Answers

C: TRUNC(x,y) is arithmetic function, it truncates x to the decimal precision of y. If y is negative, it truncates to y number of places to the left of the decimal point. This can also be used on DATE columns.

D: TO_DATE(x,[y]) function converts the non-date value x to a date using the format specified by y.

E: MOD(x,y) is arithmetic function, the modulus of x, defined in long division as the integer remainder when x divided by y until no further whole number can be produced.

F: There is no character manipulation function CASE in Oracle.

OCP Introduction to Oracle 9i: SQL Exam Guide, Jason Couchman, p. 67-93

Chapter 2: Limiting, Sorting, and Manipulating Return Data

QUESTION 86:

Which three statements correctly describe the functions and use of constraints? (Choose three.)

- A. Constraints provide data independence.
- B. Constraints make complex queries easy.
- C. Constraints enforce rules at the view level.
- D. Constraints enforce rules at the table level.
- E. Constraints prevent the deletion of a table if there are dependencies.
- F. Constraints prevent the deletion of an index if there are dependencies.

Answer: C, D, E

Explanation:

Constraints have functions to enforce rules at the view and table levels and to prevent the deletion of data if dependencies exist between tables.

Incorrect Answers

A: Constraints are used to put dependencies on data.

B: Constraints are not used to make complex queries more easy.

F: Constraints does not prevent the deletion of an index if there are dependencies.

OCP Introduction to Oracle 9i: SQL Exam Guide, Jason Couchman, p. 227-248

Chapter 5: Creating Oracle Database Objects

QUESTION 87:

You define a multiple-row subquery in the WHERE clause of an SQL query with a comparison operator "=".

What happens when the main query is executed?

- A. The main query executes with the first value returned by the subquery.
- B. The main query executes with the last value returned by the subquery.
- C. The main query executes with all the values returned by the subquery.
- D. The main query fails because the multiple-row subquery cannot be used with the comparison operator.
- E. You cannot define a multiple-row subquery in the WHERE clause of a SQL query.

Answer: D

Explanation:

The main query fails because the multiple-row sub-query cannot be used with the comparison operator. Only single-row query can use comparison operators, like =, <, >, <=, >, and <>.

Incorrect Answers

A: The main query fails because the multiple-row sub-query cannot be used with the comparison operator.

B: The main query fails because the multiple-row sub-query cannot be used with the comparison operator.

C: The main query fails because the multiple-row sub-query cannot be used with the comparison operator.

E: You can define a multiple-row sub-query in the WHERE clause of a SQL query, but error will be generated by different reason.

QUESTION 88:

You need to calculate the total of all salaries in the accounting department. Which group function should you use?

- A. MAX
- B. MIN
- C. SUM
- D. COUNT
- E. TOTAL
- F. LARGEST

Answer: C

Explanation:

Function SUM(x) calculates the sum of all values in column x in all rows returned by the SELECT statement.

Incorrect Answers

A: Function MAX(x) determines the maximum value in column x for all rows returned by the SELECT statement.

B: Function MIN(x) determines the minimum value in column x for all rows returned by the SELECT statement.

D: Function COUNT(x) counts the number of non-NULL values returned by the SELECT statement for column x.

E: There is no TOTAL() function in Oracle.

F: There is no LARGEST() function in Oracle.

QUESTION 89:

What is true about joining tables through an equijoin?

- A. You can join a maximum of two tables through an equijoin.
- B. You can join a maximum of two columns through an equijoin.
- C. You specify an equijoin condition in the SELECT or FROM clauses of a SELECT statement.
- D. To join two tables through an equijoin, the columns in the join condition must be primary key and foreign key columns.
- E. You can join n tables (all having single column primary keys) in a SQL statement by specifying a minimum of n-1 join conditions.

Answer: E

Explanation:

For N joined tables using Oracle or ANSI/ISO syntax for table joins, you need at least N-1 equijoin conditions in the WHERE clause of your SELECT statement or N-1 JOIN table_name ON join_condition clauses in order to avoid a Cartesian product, respectively.

Incorrect Answers

A: There is no maximum on two tables to join them through an equijoin.

B: There is no maximum on two columns to join them through an equijoin.

C: You can specify an equijoin condition only in the FROM clauses of a SELECT statement.

D: There is no limitation about primary key and foreign key for the columns to use them for an equijoin.

OCP Introduction to Oracle 9i: SQL Exam Guide, Jason Couchman, p. 99-107

Chapter 3: Advanced Data Selection in Oracle

QUESTION 90:

Scott issues the SQL statements:

```
CREATE TABLE dept
(deptno NUMBER(2),
dname VARCHAR2(14),
loc VARCHAR2(13));
GRANT SELECT
ON DEPT
TO SUE;
```

If Sue needs to select from Scott's DEPT table, which command should she use?

- A. SELECT *
FROM DEPT;
- B. SELECT *
FROM SCOTT. DEPT;
- C. SELECT *
FROM DBA.SCOTT DEPT;
- D. SELECT *
FROM ALL_USERS
WHERE USER_NAME = 'SCOTT'
AND TABLE NAME = 'DEPT';

Answer: B

Explanation:

If the table doesn't exist in your schema, you must prefix the table name with the schema information, separating the owner from the table name with a period.

Incorrect Answers

A: If you don't have DEPT table in your schema, this statement will fail.

C: This statement is incorrect.

D: This statement is incorrect. ALL_USERS view is used to extract information about users.

OCP Introduction to Oracle 9i: SQL Exam Guide, Jason Couchman, p. 28-29

Chapter 1: Overview of Oracle Databases

QUESTION 91:

Which clause should you use to exclude group results?

- A. WHERE
- B. HAVING
- C. RESTRICT
- D. GROUP BY
- E. ORDER BY

Answer: B

Explanation:

HAVING clause is used to weed out unwanted data once the data is grouped using the GROUP BY statement.

Incorrect Answers

A: WHERE clause cannot be used for this purpose.

C: There is no RESTRICT command in Oracle.

D: GROUP BY cannot be used itself to exclude group results.

E: ORDER BY clause may be used only to sort final results, not to exclude group results.

OCP Introduction to Oracle 9i: SQL Exam Guide, Jason Couchman, p. 133-134

Chapter 3: Advanced Data Selection in Oracle

QUESTION 92:

A subquery can be used to _____.

- A. Create groups of data
- B. Sort data in a specific order
- C. Convert data to a different format
- D. Retrieve data based on an unknown condition

Answer: D

Explanation:

A sub-query can be used to retrieve data based on an unknown condition

Incorrect Answers

A: A sub-query cannot be used to create groups of data, GROUP BY clause is used for that.

B: A sub-query cannot be used to sort data in a specific order, ORDER BY clause is used for that.

C: A sub-query cannot convert data to a different format.

OCP Introduction to Oracle 9i: SQL Exam Guide, Jason Couchman, p. 150-165

Chapter 4: Subqueries

QUESTION 93:

The EMPLOYEES table contains these columns:

LAST_NAME VARCHAR2 (25)

SALARY NUMBER (6,2)

COMMISSION_PCT NUMBER (6)

You need to write a query that will produce these results:

1. Display the salary multiplied by the commission_pct.
2. Exclude employees with a zero commission_pct.
3. Display a zero for employees with a null commission value.

Evaluate the SQL statement:

```
SELECT LAST_NAME, SALARY*COMMISSION_PCT  
FROM EMPLOYEES  
WHERE COMMISSION_PCT IS NOT NULL;
```

What does the statement provide?

- A. All of the desired results
- B. Two of the desired results
- C. One of the desired results
- D. An error statement

Answer: C

Explanation:

This statement will provide only one of the desired results: display the salary multiplied by the commission_pct. It will not exclude employees with a zero commission_pct and display a zero for employees with a null commission value.

Incorrect Answers

- A: This statement will provide only one of the desired results, not all.
- B: This statement will provide only one of the desired results, not two.
- D: This statement will not generate an error, it is correct .

OCP Introduction to Oracle 9i: SQL Exam Guide, Jason Couchman, p. 25-38

Chapter 1: Overview of Oracle Databases

QUESTION 94:

Which SELECT statement should you use to extract the year from the system date and display it in the format "1998"?

- A. SELECT TO_CHAR(SYSDATE,'yyyy')
FROM dual;
 - B. SELECT TO_DATE(SYSDATE,'yyyy')
FROM dual;
 - C. SELECT DECODE(SUBSTR(SYSDATE, 8), 'YYYY')
FROM dual;
 - D. SELECT DECODE(SUBSTR(SYSDATE, 8), 'year')
 - E. SELECT TO_CHAR(SUBSTR(SYSDATE, 8,2),'yyyy')
- FROM dual;

Answer: A

Explanation:

Function TO_CHAR(x, y) converts the value x to a character or converts a date to a character string using formatting conventions.

Incorrect Answers

B: Function TO_DATE(x,[y]) converts the non-date value x to a date using the format specified by x.

C: The DECODE function is used as substitution of IF-THEN-ELSE PL/SQL construction in SQL queries. The SELECT statement provides incorrect syntax of it because it cannot have only two parameters.

D: The DECODE function is used as substitution of IF-THEN-ELSE PL/SQL construction in SQL queries. The SELECT statement provides incorrect syntax of it because it cannot have only two parameters.

E: This statement provide incorrect syntax of TO_CHAR() function: it requires only one parameter, not two.

OCP Introduction to Oracle 9i: SQL Exam Guide, Jason Couchman, p. 86-87

Chapter 2: Limiting, Sorting, and Manipulating Return Data

QUESTION 95:

Which is an /SQL*Plus command?

- A. INSERT
- B. UPDATE
- C. SELECT
- D. DESCRIBE
- E. DELETE
- F. RENAME

Answer: D

Explanation:

There is only one SQL*Plus command in this list: DESCRIBE. It cannot be used as SQL command. This command returns a description of tablename, including all columns in that table, the datatype for each column, and an indication of whether the column permits storage of NULL values.

Incorrect Answers

A: INSERT is not a SQL*Plus command. It's data-manipulation language (DML) command.

B: UPDATE is not a SQL*Plus command. It's data-manipulation language (DML) command.

C: SELECT is not a SQL*Plus command.

E: DELETE is not a SQL*Plus command. It's data-manipulation language (DML) command.

F: RENAME is not a SQL*Plus command.

OCP Introduction to Oracle 9i: SQL Exam Guide, Jason Couchman, p. 43

Chapter 1: Overview of Oracle Databases

QUESTION 96:

What does the TRUNCATE statement do?

- A. Removes the table
- B. Removes all rows from a table
- C. Shortens the table to 10 rows
- D. Removes all columns from a table
- E. Removes foreign keys from a table

Answer: B

Explanation:

Command TRUNCATE is used to remove all row data from the table, while leaving the definition of the table intact, including the definition of constraints and any associated database objects as indexes, constraints, and triggers on the table.

Incorrect Answers

A: Command TRUNCATE does not remove the table. DROP TABLE command does that.

C: There is no command in Oracle to shorten the table to 10 rows: but you can do this with queries.

D: This command does not remove all columns from a table.

E: This command does not remove all foreign keys from a table.

OCP Introduction to Oracle 9i: SQL Exam Guide, Jason Couchman, p. 225

Chapter 5: Creating Oracle Database Objects

QUESTION 97:

You need to change the definition of an existing table. The COMMERCIALS table needs its DESCRIPTION column changed to hold varying length characters up to 2000 bytes. The column can currently hold 1000 bytes per value. The table contains 20000 rows.

Which statement is valid?

- A. ALTER TABLE commercials
MODIFY (description CHAR2(2000));
- B. ALTER TABLE commercials
CHANGE (description CHAR2(2000));
- C. ALTER TABLE commercials
CHANGE (description VARCHAR2 (2000));
- D. ALTER TABLE commercials
MODIFY (description VARCHAR2 (2000));
- E. You cannot increase the size of a column if the table has rows.

Answer: D

Explanation:

Incorrect Answers

A: There is no CHAR2 datatype in Oracle. Also 200 symbols is not enough to store up to 2000 bytes.

B: There is no CHAR2 datatype in Oracle. There is no ALTER TABLE table_name CHANGE command in Oracle.

C: There is no ALTER TABLE table_name CHANGE command in Oracle.

E: You can increase the size of a column if the table has rows. It can be done with ALTER TABLE table_name

MODIFY column.

OCP Introduction to Oracle 9i: SQL Exam Guide, Jason Couchman, p. 219-224
Chapter 5: Creating Oracle Database Objects

QUESTION 98:

Which statement creates a new user?

- A. CREATIVE USER susan;
- B. CREATIVE OR REPLACE USER susan;
- C. CREATE NEW USER susan
DEFAULT
- D. CREATE USER susan
IDENTIFIED BY blue;
- E. CREATE NEW USER susan
IDENTIFIED BY blue;
- F. CREATE OR REPLACE USER susan
IDENTIFIED BY blue;

Answer: D

Explanation:

The correct statement to create user is: CREATE USER user_name IDENTIFIED BY password.

Incorrect Answers

- A: This syntax is incorrect to create user: you need to provide also password for the user.
- B: There is no CREATE OR REPLACE USER command in Oracle.
- C: There is no CREATE NEW USER user_name DEFAULT command in Oracle.
- E: There is no CREATE NEW USER user_name IDENTIFIED BY command in Oracle.
- F: There is no CREATE OR REPLACE USER user_name IDENTIFIED BY command in Oracle.

OCP Introduction to Oracle 9i: SQL Exam Guide, Jason Couchman, p. 348-351

Chapter 8: User Access in Oracle

QUESTION 99:

Which three are true regarding the use of outer joins? (Choose three.)

- A. You cannot use IN operator in a condition that involves an outerjoin.
- B. You use (+) on both sides of the WHERE condition to perform an outerjoin.
- C. You use (*) on both sides of the WHERE condition to perform an outerjoin.
- D. You use an outerjoin to see only the rows that do not meet the join condition.
- E. In the WHERE condition, you use (+) following the name of the column in the table without matching rows, to perform an outerjoin.
- F. You cannot link a condition that is involved in an outerjoin to another condition by using the OR operator.

Answer: D, E, F

Explanation:

You can use an outerjoin to see only the rows that do not meet the join condition. In the WHERE condition, you use (+) following the name of the column in the table without matching rows, to perform an outerjoin. You cannot link a condition that is involved in an outerjoin to another condition by using the OR operator.

Incorrect Answers

A: You can use IN operator in a condition that involves an outerjoin.

B: You use (+) following the name of the column in the table without matching rows, but not on both sides of the WHERE condition to perform an outerjoin.

C: You don't use (*) to define outerjoin operation.

OCP Introduction to Oracle 9i: SQL Exam Guide, Jason Couchman, p. 109-118

Chapter 3: Advanced Data Selection in Oracle

QUESTION 100:

In which scenario would TOP N analysis be the best solution?

A. You want to identify the most senior employee in the company.

B. You want to find the manager supervising the largest number of employees.

C. You want to identify the person who makes the highest salary for all employees.

D. You want to rank the top three sales representatives who have sold the maximum number of products.

Answer: D

Explanation:

If you want to rank the top three sales representatives who have sold the maximum number of products TOP-N query will be the best solution. TON-N queries use inline views and are handy for displaying a short list of table data, based on "greatest" or "least" criteria.

Incorrect Answers

A: To complete this request you don't need to use TOP-N query.

B: It is not necessary to use TOP-N query in this case.

C: To complete this request you don't need to use TOP-N query.

OCP Introduction to Oracle 9i: SQL Exam Guide, Jason Couchman, p. 162-165

Chapter 4: Subqueries

QUESTION 101:

Which constraint can be defines only at the column level?

A. UNIQUE

B. NOT NULL

C. CHECK

D. PRIMARY KEY

E. FOREIGN KEY

Answer: B

Explanation:

The NOT NULL constraint can be defined only at the column level. It enforces that a value must be defined for this column such that the column may not be NULL for any row.

Incorrect Answers

A: The UNIQUE constraint enforces uniqueness on values in the constrained column. It can be defined not only at the column level.

C: The CHECK constraint enforces that values added to the constrained column must be present in a static list of values permitted for the column.

D: The PRIMARY KEY constraint stipulates that values in the constrained column(s) must be unique and not NULL. If the primary key applies to multiple columns, then the combination of values in the columns must be unique and not NULL.

E: The FOREIGN KEY constraint enforces that only values in the primary key of a parent table may be included as values in the constrained column(s) of the child table.

OCP Introduction to Oracle 9i: SQL Exam Guide, Jason Couchman, p. 227-232

Chapter 5: Creating Oracle Database Objects

QUESTION 102:

What is true about the WITH GRANT OPTION clause?

- A. It allows a grantee DBA privileges.
- B. It is required syntax for object privileges.
- C. It allows privileges on specified columns of tables.
- D. It is used to grant an object privilege on a foreign key column.
- E. It allows the grantee to grant object privileges to other users and roles.

Answer: E

Explanation:

The GRANT command with the WITH GRANT OPTION clause allows the grantee to grant object privileges to other users and roles.

Incorrect Answers

A: The WITH GRANT OPTION does not allow a grantee DBA privileges.

B: It is not required syntax for object privileges. It is optional clause of GRANT command.

C: GRANT command does not allow privileges on columns of tables.

D: It is not used to grant an object privilege on a foreign key column.

OCP Introduction to Oracle 9i: SQL Exam Guide, Jason Couchman, p. 356-365

Chapter 8: User Access in Oracle

QUESTION 103:

Which substitution variable would you use if you want to reuse the variable without prompting the user each time?

- A. &
- B. ACCEPT

C. PROMPT
D. &&

Answer: D

Explanation:

To reuse the variable without prompting the user each time you can use && substitution variable.

Incorrect Answers

A: This substitution variable will prompt the user each time.

B: ACCEPT is command, not substitution variable. It used to define more accurate or specific prompt or when you want more output to display as the values are defined.

C: PROMPT is part of the ACCEPT command, it is not a variable.

OCP Introduction to Oracle 9i: SQL Exam Guide, Jason Couchman, p. 165-173

Chapter 4: Subqueries

QUESTION 104:

The EMPLOYEES table has these columns:

LAST NAME VARCHAR2(35)

SALARY NUMBER(8,2)

HIRE_DATE DATE

Management wants to add a default value to the SALARY column. You plan to alter the table by using this SQL statement:

```
ALTER TABLE EMPLOYEES
```

```
MODIFY ( SALARY DEFAULT 5000);
```

What is true about your ALTER statement?

A. Column definitions cannot be altered to add DEFAULT values.

B. A change to the DEFAULT value affects only subsequent insertions to the table.

C. Column definitions cannot be altered at add DEFAULT values for columns with a NUMBER data type.

D. All the rows that have a NULL value for the SALARY column will be updated with the value 5000.

Answer: B

Explanation:

A change to the DEFAULT value affects only subsequent insertions to the table. Existing rows will not be affected.

Incorrect Answers

A: Column definitions can be altered to add DEFAULT values.

C: Column definitions can be altered to add DEFAULT values. It works for columns with a NUMBER data type also.

D: A change to the DEFAULT value affects only subsequent insertions to the table. Existing rows will not be affected.

OCP Introduction to Oracle 9i: SQL Exam Guide, Jason Couchman, p. 219-224

Chapter 5: Creating Oracle Database Objects

QUESTION 105:

The DBA issues this SQL command:

```
CREATE USER scott
```

```
IDENTIFIES BY tiger;
```

What privileges does the user Scott have at this point?

- A. No privileges.
- B. Only the SELECT privilege.
- C. Only the CONNECT privilege.
- D. All the privileges of a default user.

Answer: A

Explanation:

There are no privileges for the user Scott at this point. They are not added themselves to the user immediately after creation. The DBA needs to grant all privileges explicitly.

Incorrect Answers

B: There are no privileges for the user Scott at this point. SELECT privilege needs to be added to the user Scott.

C: There are no privileges for the user Scott at this point. CONNECT privilege needs to be added to the user Scott.

D: There is no default user in Oracle.

OCP Introduction to Oracle 9i: SQL Exam Guide, Jason Couchman, p. 348-351

Chapter 8: User Access in Oracle

QUESTION 106:

Which two statements complete a transaction? (Choose two)

- A. DELETE employees;
- B. DESCRIBE employees;
- C. ROLLBACK TO SAVE POINT C;
- D. GRANT SELECT ON employees TO SCOTH
- E. ALTER TABLE employees
SET UNUSED COLUMN sal;
- F. Select MAX(sal)
FROM employees
WHERE department _ id 20;

Answer: D, E

Explanation:

D: GRANT is a DML operation which will cause an implicit commit

E: It is important to understand that an implicit COMMIT occurs on the database when a user exits SQL*Plus or issues a data-definition language (DDL) command such as a CREATE TABLE statement, used to create a database object, or an ALTER TABLE

statement, used to alter a database object.

Incorrect Answers

A: The DELETE command is data-manipulation language (DML) command and it does not complete a transaction.

B: The DESCRIBE command is internal SQL*Plus command and it has nothing to do with completion a transaction.

C: ROLLBACK is not used to commit or complete a transaction, it is used to undo a transaction

F: SELECT command is used to retrieve data. It does not complete a transaction.

OCP Introduction to Oracle 9i: SQL Exam Guide, Jason Couchman, p. 281-282

Chapter 3: Advanced Data Selection in Oracle

QUESTION 107:

You need to produce a report for mailing labels for all customers. The mailing label must have only the customer name and address. The CUSTOMERS table has these columns:

CUST_ID NUMBER(4) NOT NULL

CUST_NAME VARCHAR2(100) NOT NULL

CUST_ADDRESS VARCHAR2(150)

CUST_PHONE VARCHAR2(20)

Which SELECT statement accomplishes this task?

A. SELECT*

FROM customers;

B. SELECT name, address

FROM customers;

C. SELECT id, name, address, phone

FROM customers;

D. SELECT cust_name, cust_address

FROM customers;

E. SELECT cust_id, cust_name, cust_address, cust_phone

FROM customers;

Answer: D

Explanation:

This answer provides correct list of columns for the output.

Incorrect Answers

A: This answer does not provide correct list of columns for the output. It is not required to show all columns of the table. Symbol "*" is used in the SELECT command to substitute a list of all columns of the table.

B: This answer does not provide correct list of columns for the output. There are not NAME and ADDRESS columns in the CUSTOMERS table.

C: This answer does not provide correct list of columns for the output. There are not ID, NAME, ADDRESS or PHONE columns in the CUSTOMERS table.

E: This answer does not provide correct list of columns for the output. It is not required to show all columns of the table.

QUESTION 108:

Which statement describes the ROWID data type?

- A. Binary data up to 4 gigabytes.
- B. Character data up to 4 gigabytes.
- C. Raw binary data of variable length up to 2 gigabytes.
- D. Binary data stored in an external file, up to 4 gigabytes.
- E. A hexadecimal string representing the unique address of a row in its table.

Answer: E

Explanation:

The ROWID datatype stores information related to the disk location of table rows. They also uniquely identify the rows in your table. The ROWID datatype is stored as a hexadecimal string.

Incorrect Answers

- A: It is not a binary data. The ROWID datatype is a hexadecimal string.
- B: It is not a character data. The ROWID datatype is a hexadecimal string.
- C: It is not a raw binary data. The ROWID datatype is a hexadecimal string.
- D: It is not binary data stored in an external file. The ROWID datatype is a hexadecimal string.

OCP Introduction to Oracle 9i: SQL Exam Guide, Jason Couchman, p. 216
Chapter 5: Creating Oracle Database Objects

QUESTION 109:

Evaluate the SQL statement

DROP TABLE DEPT:

Which four statements are true of the SQL statement? (Choose four)

- A. You cannot roll back this statement.
- B. All pending transactions are committed.
- C. All views based on the DEPT table are deleted.
- D. All indexes based on the DEPT table are dropped.
- E. All data in the table is deleted, and the table structure is also deleted.
- F. All data in the table is deleted, but the structure of the table is retained.
- G. All synonyms based on the DEPT table are deleted.

Answer: A, B, D, E

Explanation:

You cannot roll back DROP TABLE statement. All pending transactions related on this table are committed. If the table is dropped, Oracle automatically drops any index, trigger and constraint associated with the table as well. All data in the table is deleted, and the table structure is also deleted.

Incorrect Answers

C: All views based on the DEPT table become invalid, but they are not deleted.

F: All data in the table is deleted, and the table structure is also deleted. Command TRUNCATE deletes all data in the table, but does not delete the structure of the table.

G: All synonyms based on the DEPT table are not deleted after dropping the table.

OCP Introduction to Oracle 9i: SQL Exam Guide, Jason Couchman, p. 225

Chapter 5: Creating Oracle Database Objects

QUESTION 110:

You are granted the CREATE VIEW privilege. What does this allow you to do?

- A. Create a table view.
- B. Create a view in any schema.
- C. Create a view in your schema.
- D. Create a sequence view in any schema.
- E. Create a view that is accessible by everyone.
- F. Create a view only of it is based on tables that you created.

Answer: C

Explanation:

You can create a view in your own schema only if you are granted the CREATE VIEW privilege.

Incorrect Answers

A: You can create a view in your own schema only.

B: You can create a view in your own schema only, not in any schema.

D: There is no sequence view in Oracle.

E: You cannot create a view that is accessible by everyone. You will need specially grant SELECT privileges on this view for everyone.

F: You can create a view in your own schema, but not only for tables in your schema. You can use object from other users schemas if you have privileges to retrieve data from them.

OCP Introduction to Oracle 9i: SQL Exam Guide, Jason Couchman, p. 292-301

Chapter 7: Creating Other Database Objects in Oracle

QUESTION 111:

Which two statements about creating constraints are true? (Choose two)

- A. Constraint names must start with SYS_C.
- B. All constraints must be defines at the column level.
- C. Constraints can be created after the table is created.
- D. Constraints can be created at the same time the table is created.
- E. Information about constraints is found in the VIEW_CONSTRAINTS dictionary view.

Answer: C, D

Explanation:

Constraints can be created after the table is created. Use ALTER TABLE command for that.

Constraints can be created at the same time the table is created (CREATE TABLE command).

Incorrect Answers

A: There is no requirements in Oracle that constraint names must start with SYS_C. Oracle can use prefix "SYS" to build indexes for UNIQUE and NOT NULL constraints, but it is not required for user to follow this naming rule.

B: Not all constraints must be defines at the column level. Only NOT NULL constraint must be.

E: There is no VIEW_CONSTRAINTS dictionary view in Oracle.

OCP Introduction to Oracle 9i: SQL Exam Guide, Jason Couchman, p. 227-232

Chapter 5: Creating Oracle Database Objects

QUESTION 112:

Which two statements are true about WHERE and HAVING clauses? (Choose two)

- A. A WHERE clause can be used to restrict both rows and groups.
- B. A WHERE clause can be used to restrict rows only.
- C. A HAVING clause can be used to restrict both rows and groups.
- D. A HAVING clause can be used to restrict groups only.
- E. A WHERE clause CANNOT be used in a query of the query uses a HAVING clause.
- F. A HAVING clause CANNOT be used in subqueries.

Answer: B, D

Explanation :

B: WHERE clause cannot be use to restrict groups

WHERE clause cannot be use when there is group functions.

D: A HAVING clause can only e used to restrict GROUPS.

Note: HAVING clause to specify which groups are to be displayed and thus further restrict the groups on

the basis of aggregate information. The Oracle server performs the following steps when you use the Having clause

1. rows are grouped
2. the group function is applied to the group
3. the group that match the criteria in the Having clause are displayed.

Incorrect Answers :

A. Where clause cannot be use to restrict groups

C. A HAVING clause can only e used to restrict GROUPS.

E. WHERE clause cannot be use when there is group function, instead HAVING is to be use.

F. There is no constraint to use HAVING clause in a subqueries.

Refer : Introduction to Oracle9i : SQL, Oracle University Student Guide, Aggregating Data using Group Functions, p. 5-20

QUESTION 113:

EMPLOYEES and DEPARTMENTS data:

EMPLOYEES

EMPLOYEE_ID	DEMP_NAME	DEPT_ID	MGR_ID	JOB_ID	SALARY
101	Smith	20	120	SA_REP	4000
102	Martin	10	105	CLERK	2500
103	Chris	20	120	IT_ADMIN	4200
104	John	30	108	HR_CLERK	2500
105	Diana	30	108	IT_ADMIN	5000
106	Smith	40	110	AD_ASST	3000
108	Jennifer	30	110	HR_DIR	6500
110	Bob	40		EX_DIR	8000
120	Ravi	20	110	SA_DIR	6500

DEPARTMENTS

DEPARTMENT_ID	DEPARTMENT_NAME
10	Admin
20	Education
30	IT
40	Human Resources

On the EMPLOYEES table, EMPLOYEE_ID is the primary key. MGR_ID is the ID managers and refers to the EMPLOYEE_ID.

On the DEPARTMENTS table DEPARTMENT_ID is the primary key.

Evaluate this UPDATE statement.

UPDATE employees

SET mgr_id =

(SELECT mgr_id

FROM employees

WHERE dept_id=

(SELECT department_id

FROM departments

WHERE department_name = 'Administration')),

Salary = (SELECT salary

FROM employees

WHERE emp_name = 'Smith')

WHERE job_id = 'IT_ADMIN';

What happens when the statement is executed?

1Z0-007

- A. The statement executes successfully, leaves the manager ID as the existing value, and changes the salary to 4000 for the employees with ID 103 and 105.
- B. The statement executes successfully, changes the manager ID to NULL, and changes the salary to 4000 for the employees with ID 103 and 105.
- C. The statement executes successfully, changes the manager ID to NULL, and changes the salary to 3000 for the employees with ID 103 and 105.
- D. The statement fails because there is more than one row matching the employee name Smith.
- E. The statement fails because there is more than one row matching the IT_ADMIN job ID in the EMPLOYEES table.
- F. The statement fails because there is no 'Administration' department in the DEPARTMENTS table.

Answer: D

Explanation :

'=' is use in the statement and subquery will return more than one row.

Employees table has 2 row matching the employee name Smith.

The update statement will fail.

Incorrect Answers :

- A. The Update statement will fail no update was done.
- B. The update statement will fail no update was done.
- C. The update statement will fail no update was done.
- E. The update statement will fail but not due to job_it='IT_ADMIN'
- F. The update statement will fail but not due to department_id='Administration'

Refer : Introduction to Oracle9i : SQL, Oracle University Student Guide, Subqueries, p. 6-12

QUESTION 114:

Which SQL statement accepts user input for the columns to be displayed, the table name, and WHERE condition?

- A. SELECT &1, "&2"
FROM &3
WHERE last_name = '&8';
- B. SELECT &1, '&2'
FROM &3
WHERE '& last_name = '&8';
- C. SELECT &1, &2
FROM &3
WHERE last_name = '&8';
- D. SELECT &1, '&2'
FROM EMP
WHERE last_name = '&8';

Answer: C

Explanation :

In a WHERE clause, date and characters values must be enclosed within single quotation marks.

Sample of the correct syntax

```
SELECT EMPLOYEE_ID, &COLUMN_NAME  
FROM EMPLOYEES
```

Incorrect Answers :

- A. Incorrect use of " symbol
- B. Incorrect use of ' symbol
- D. No input for table name as EMP has been use in the statement.

Refer : Introduction to Oracle9i : SQL, Oracle University Student Guide, Producing Readable Output with iSQL*PLUS, p. 7-8

QUESTION 115:

Evaluate the SQL statement:

```
SELECT ROUND(45.953, -1), TRUNC(45.936, 2)  
FROM dual;
```

Which values are displayed?

- A. 46 and 45
- B. 46 and 45.93
- C. 50 and 45.93
- D. 50 and 45.9
- E. 45 and 45.93
- F. 45.95 and 45.93

Answer: C

Explanation :

ROUND (45.953,-1) will round value to 1 decimal places to the left.

TRUNC (45.936,2) will truncate value to 2 decimal

The answer will be 50 and 45.93

Incorrect Answers :

- A. Does not meet round and truncate functions
- B. Does not meet round functions
- D. Does not meet truncate functions
- E. Does not meet round functions
- F. Does not meet round functions

Refer : Introduction to Oracle9i : SQL, Oracle University Student Guide, Single-Row functions, p. 3-13

QUESTION 116:

The CUSTOMERS table has these columns:

```
CUSTOMER_ID NUMBER (4) NOT NULL
```


CUSTOMER_NAME VARCHAR2 (100) NOT NULL
STREET_ADDRESS VARCHAR2 (150)
CITY_ADDRESS VARCHAR2 (50)
STATE_ADDRESS VARCHAR2 (50)
PROVINCE_ADDRESS VARCHAR2 (50)
COUNTRY_ADDRESS VARCHAR2 (50)
POSTAL_CODE VARCHAR2 (12)
CUSTOMER_PHONE VARCHAR2 (20)

The CUSTOMER_ID column is the primary key for the table.

You need to determine how dispersed your customer base is.

Which expression finds the number of different countries represented in the CUSTOMERS table?

- A. COUNT(UPPER(country_address))
- B. COUNT(DIFF(UPPER(country_address)))
- C. COUNT(UNIQUE(UPPER(country_address)))
- D. COUNT DISTINCTC UPPER(country_address)
- E. COUNT(DISTINTC (UPPER(country_address)))

Answer: E

QUESTION 117:

Examine the structure of the EMPLOYEES and NEW_EMPLOYEES tables:

EMPLOYEES

EMPLOYEE_ID NUMBER Primary Key

FIRST_NAME VARCHAR2 (25)

LAST_NAME VARCHAR2 (25)

HIRE_DATE DATE

NEW EMPLOYEES

EMPLOYEE_ID NUMBER Primary Key

NAME VARCHAR2 (60)

Which DELETE statement is valid?

- A. DELETE FROM employees
WHERE employee_id = (SELECT employee_id
FROM employees);
- B. DELETE * FROM employees
WHERE employee_id = (SELECT employee_id
FROM new_employees);
- C. DELETE FROM employees
WHERE employee_id IN (SELECT employee_id
FROM new_employees
WHERE name = ('Carrey'))
- D. DELETE * FROM employees
WHERE employee_id IN (SELECT employee_id
FROM new_employees)

WHERE last_name = ('Carrey')

Answer: C

Explanation :

The correct syntax for DELETE statement

DELETE [FROM] table

[WHERE condition];

Incorrect Answers :

A. '=' is use in the statement and subquery will return more than one row.

Error Ora-01427 : single-row subquery returns more than one row.

B. Incorrect DELETE statement

D. Incorrect DELETE statement

Refer : Introduction to Oracle9i : SQL, Oracle University Student Guide, Manipulating Data, p. 8-19

QUESTION 118:

Examine the structure of the EMP_DEPT_VU view:

Column Name Type Remarks

EMPLOYEE_ID NUMBER From the EMPLOYEES table

EMP_NAME VARCHAR2(30) From the EMPLOYEES table

JOB_ID VARCHAR2(20) From the EMPLOYEES table

SALARY NUMBER From the EMPLOYEES table

DEPARTMENT_ID NUMBER From the DEPARTMENTS table

DEPT_NAME VARCHAR2(30) From the DEPARTMENTS table

Which SQL statement produces an error?

A. SELECT *

FROM emp_dept_vu;

B. SELECT department_id, SUM(salary)

FROM emp_dept_vu

GROUP BY department_id;

C. SELECT department_id, job_id, AVG(salary)

FROM emp_dept_vu

GROUP BY department_id, job_id;

D. SELECT job_id, SUM(salary)

FROM emp_dept_vu

WHERE department_id IN (10,20)

GROUP BY job_id

HAVING SUM (salary) > 20000

E. None of the statements produce an error; all are valid.

Answer: E

Explanation :

None of the statements produce an error.

Incorrect answer :

- A Statement will not cause error
- B Statement will not cause error
- C Statement will not cause error
- D Statement will not cause error

QUESTION 119:

You own a table called EMPLOYEES with this table structure:

EMPLOYEE_ID NUMBER Primary Key

FIRST_NAME VARCHAR2(25)

LAST_NAME VARCHAR2(25)

HIRE_DATE DATE

What happens when you execute this DELETE statement?

DELETE employees;

- A. You get an error because of a primary key violation.
- B. The data and structure of the EMPLOYEES table are deleted.
- C. The data in the EMPLOYEES table is deleted but not the structure.
- D. You get an error because the statement is not syntactically correct.

Answer : C

Explanation :

You can remove existing rows from a table by using the DELETE statement.

DELETE [FROM] table

[WHERE condition];

Incorrect answer :

- A Statement will not cause error
- B Delete statement will not delete the table structure
- D Statement will not cause error

Refer : Introduction to Oracle9i : SQL, Oracle University Study Guide, 8-19

QUESTION 120:

Examine the structure of the EMPLOYEES and NEW_EMPLOYEES tables:

EMPLOYEES

EMPLOYEE_ID NUMBER Primary Key

FIRST_NAME VARCHAR2(25)

LAST_NAME VARCHAR2(25)

HIRE_DATE DATE

NEW_EMPLOYEES

EMPLOYEE_ID NUMBER Primary Key

NAME VARCHAR2(60)

Which MERGE statement is valid?

- A. MERGE INTO new_employees c USING employees e ON (c.employee_id = e.employee_id) WHEN MATCHED THEN UPDATE SET c.name = e.first_name ||','|| e.last_name WHEN NOT MATCHED THEN INSERT VALUES (e.employees_id, e.first_name ||','|| e.last_name);
- B. MERGE new_employees c USING employees e ON (c.employee_id = e.employee_id) WHEN EXISTS THEN UPDATE SET c.name = e.first_name ||','|| e.last_name WHEN NOT MATCHED THEN INSERT VALUES (e.employee_id, e.first_name ||','|| e.last_name);
- C. MERGE INTO new_employees c USING employees e ON (c.employee_id = e.employee_id) WHEN EXISTS THEN UPDATE SET c.name = e.first_name ||','|| e.last_name WHEN NOT MATCHED THEN INSERT VALUES (e.employees_id, e.first_name ||','|| e.last_name);
- D. MERGE new_employees c FROM employees e ON (c.employee_id = e.employee_id) WHEN MATCHED THEN UPDATE SET c.name = e.first_name ||','|| e.last_name WHEN NOT MATCHED THEN INSERT INTO new _ employees VALUES (e.employees_id, e.first_name ||','|| e.last_name);

Answer: A

Explanation :

The correct statement for MERGE is
MERGE INTO table_name

Incorrect answer :

B Wrong statement with the keyword EXISTS

C Wrong statement with the keyword EXISTS

D Wrong statement on the MERGE new_employees

Refer : Introduction to Oracle9i : SQL, Oracle University Study Guide, 8-29

QUESTION 121:

The EMPLOYEES table contains these columns:

EMPLOYEE_ID NUMBER(4)

ENAME VARCHAR2 (25)

JOB_ID VARCHAR2(10)

Which SQL statement will return the ENAME, length of the ENAME, and the numeric position of the letter "a" in the ENAME column, for those employees whose ENAME ends with a the letter "n"?

A. SELECT ENAME, LENGTH(ENAME), INSTR(ENAME, 'a') FROM EMPLOYEES WHERE SUBSTR (ENAME, -1,1) = 'n';

B. SELECT ENAME, LENGTH(ENAME), INSTR(ENAME, , -1,1) FROM EMPLOYEES WHERE SUBSTR (ENAME, -1,1) = 'n';

C. SELECT ENAME, LENGTH(ENAME), SUBSTR(ENAME, -1,1) FROM EMPLOYEES WHERE INSTR (ENAME, 1,1) = 'n';

D. SELECT ENAME, LENGTH(ENAME), SUBSTR(ENAME, -1,1) FROM EMPLOYEES WHERE INSTR (ENAME, -1,1) = 'n';

Answer: A

Explanation :

INSTR is a character function return the numeric position of a named string. INSTR(NAMED,'a')

Incorrect answer :

B Did not return a numeric position for 'a'.

C Did not return a numeric position for 'a'.

D Did not return a numeric position for 'a'.

Refer : Introduction to Oracle9i : SQL, Oracle University Study Guide, 3-8

QUESTION 122:

Which four are valid Oracle constraint types? (Choose four.)

A. CASCADE

B. UNIQUE

C. NONUNIQUE

D. CHECK

E. PRIMARY KEY

F. CONSTANT

G. NOT NULL

Answer: B, D, E, G

Explanation :

Oracle constraint type is Not Null, Check, Primary Key, Foreign Key and Unique

Incorrect answer:

A Is not Oracle constraint

C Is not Oracle constraint

F Is not Oracle constraint

Refer : Introduction to Oracle9i : SQL, Oracle University Study Guide, 10-3

QUESTION 123:

Which SQL statement would you use to remove a view called EMP_DEPT_VU from your schema?

A. DROP emp_dept_uv;

B. DELETE emp_dept_uv;

C. REMOVE emp_dept_uv;

D. DROP VIEW emp_dept_uv;

E. DELETE VIEW emp_dept_uv;

F. REMOVE VIEW emp_dept_uv;

Answer: D

Explanation :

DROP VIEW viewname;

Incorrect answer:

- A Not a valid drop view statement
- B Not a valid drop view statement
- C Not a valid drop view statement
- E Not a valid drop view statement
- F Not a valid drop view statement

Refer : Introduction to Oracle9i : SQL, Oracle University Study Guide, 11-20

QUESTION 124:

Which is an iSQL*Plus command?

- A. INSERT
- B. UPDATE
- C. SELECT
- D. DESCRIBE
- E. DELETE
- F. RENAME

Answer: D

Explanation :

The only SQL*Plus command in this list : DESCRIBE. It cannot be used as SQL command.

This command returns a description of tablename, including all columns in that table, the datatype for each column and an indication of whether the column permits storage of NULL values.

Incorrect answer:

- A INSERT is not a SQL*PLUS command
- B UPDATE is not a SQL*PLUS command
- C SELECT is not a SQL*PLUS command
- E DELETE is not a SQL*PLUS command
- F RENAME is not a SQL*PLUS command

Refer : Introduction to Oracle9i : SQL, Oracle University Study Guide, 7

QUESTION 125:

Examine the description of the EMPLOYEES table:

EMP_ID NUMBER(4) NOT NULL
LAST_NAME VARCHAR2(30) NOT NULL
FIRST_NAME VARCHAR2(30)
DEPT_ID NUMBER(2)

Which statement produces the number of different departments that have employees with last name Smith?

- A. SELECT COUNT (*) FROM employees WHERE last _name='smith';
- B. SELECT COUNT (dept_id) FROM employees WHERE last _name='smith';
- C. SELECT DISTINCT (COUNT (dept_id) FROM employees WHERE last _name='smith');
- D. SELECT COUNT (DISTINCT dept_id) FROM employees WHERE last _name='smith';

E. SELECT UNIQUE (dept_id) FROM employees WHERE last _name='smith';

Answer: D

QUESTION 126:

Top N analysis requires _____ and _____. (Choose two.)

- A. the use of rowid
- B. a GROUP BY clause
- C. an ORDER BY clause
- D. only an inline view
- E. an inline view and an outer query

Answer: C, E

Explanation :

The correct statement for Top-N Analysis

```
SELECT [column_list], ROWNUM
```

```
FROM (SELECT [column_list]
```

```
FROM table
```

```
ORDER BY Top-N_column)
```

```
WHERE ROWNUM <=N;
```

Incorrect answer :

A ROWID is not require

B GROUP BY clause is not require

D Must have inline view and outer query.

Refer : Introduction to Oracle9i : SQL, Oracle University Study Guide, 11-23

QUESTION 127:

Which statement adds a constraint that ensures the CUSTOMER_NAME column of the CUSTOMERS table holds a value?

- A. ALTER TABLE customers ADD CONSTRAINT cust_name_nn CHECK customer_name IS NOT NULL;
- B. ALTER TABLE customers MODIFY CONSTRAINT cust_name_nn CHECK customer_name IS NOT NULL;
- C. ALTER TABLE customers MODIFY customer_name CONSTRAINT cust_name_nn NOT NULL;
- D. ALTER TABLE customers MODIFY customer_name CONSTRAINT cust_name_nn IS NOT NULL;
- E. ALTER TABLE customers MODIFY name CONSTRAINT cust_name_nn NOT NULL;
- F. ALTER TABLE customers ADD CONSTRAINT cust_name_nn CHECK customer_name NOT NULL;

Answer: C

QUESTION 128:

Evaluate this SQL statement:

```
SELECT ename, sal, 12* sal+100 FROM emp;
```

The SAL column stores the monthly salary of the employee. Which change must be made to the above syntax to calculate the annual compensation as "monthly salary plus a monthly bonus of \$100, multiplied by 12"?

- A. No change is required to achieve the desired results.
- B. `SELECT ename, sal, 12* (sal+100) FROM emp;`
- C. `SELECT ename, sal, (12* sal)+100 FROM emp;`
- D. `SELECT ename, sal +100,*12 FROM emp;`

Answer: B

Explanation :

to achieve the result you must add 100 to sal before multiply with 12.

```
SELECT ename, sal, 12* (sal+100) FROM EMP;
```

Incorrect answer :

A Multiplication and division has priority over addition and subtraction in Operator precedence.

C Give wrong results

D Wrong syntax

Refer : Introduction to Oracle9i : SQL, Oracle University Study Guide, 1-11

QUESTION 129:

You are the DBA for an academic database. You need to create a role that allows a group of users to modify existing rows in the STUDENT_GRADES table.

Which set of statements accomplishes this?

- A. `CREATE ROLL registrar; GRANT MODIFY ON student_grant TO registrar; GRANT registrar to user 1, user2, user3`
- B. `CREATE NEW ROLE registrar; GRANT ALL ON student_grant TO registrar; GRANT registrar to user 1, user2, user3`
- C. `CREATE ROLL registrar; GRANT UPDATE ON student_grant TO registrar; GRANT ROLE to user1, user2, user3`
- D. `CREATE ROLL registrar; GRANT UPDATE ON student_grant TO registrar; GRANT registrar to user 1, user2, user3;`
- E. `CREATE registrar; GRANT CHANGE ON student_grant TO registrar; GRANT registrar;`

Answer: D

Explanation :

this is the correct solution for the answer.

```
GRANT role _name to user;
```

Incorrect answer :

A there is no such MODIFY keyword

B invalid CREATE command, there is no such NEW keyword

C invalid GRANT command, there is no such ROLE keyword

E invalid GRANT command, there is no such CHANGE keyword

Refer : Introduction to Oracle9i : SQL, Oracle University Study Guide, 13-10

QUESTION 130:

You need to modify the STUDENTS table to add a primary key on the STUDENT_ID column. The table is currently empty.

Which statement accomplishes this task?

- A. ALTER TABLE students ADD PRIMARY KEY _ id;
- B. ALTER TABLE students ADD CONSTRAINT PRIMARY KEY (student_id);
- C. ALTER TABLE students ADD CONSTRAINT stud_id_pk PRIMARY KEY student_id;
- D. ALTER TABLE students ADD CONSTRAINT stud_id_pk PRIMARY KEY (student_id);
- E. ALTER TABLE students MODIFY CONSTRAINT stud_id_pk PRIMARY KEY (student_id);

Answer: D

Explanation :

ALTER TABLE table_name

ADD [CONSTRAINT constraint] type (column);

Incorrect answer :

A wrong syntax

B wrong syntax

C wrong syntax

E no such MODIFY keyword

Refer : Introduction to Oracle9i : SQL, Oracle University Study Guide, 10-17

QUESTION 131:

The STUDENT_GRADES table has these columns:

STUDENT_ID NUMBER(12)

SEMESTER_END DATE

GPA NUMBER(4,3)

The registrar requested a report listing the students' grade point averages (GPA) sorted from highest grade point average to lowest.

Which statement produces a report that displays the student ID and GPA in the sorted order requested by the registrar?

- A. SELECT student_id, gpa FROM student_grades ORDER BY gpa ASC;
- B. SELECT student_id, gpa FROM student_grades SORT ORDER BY gpa ASC;
- C. SELECT student_id, gpa FROM student_grades SORT ORDER BY gpa;
- D. SELECT student_id, gpa FROM student_grades ORDER BY gpa;
- E. SELECT student_id, gpa FROM student_grades SORT ORDER BY gpa DESC;
- F. SELECT student_id, gpa FROM student_grades ORDER BY gpa DESC;

Answer: F

Explanation :

sorted by highest to lowest is DESCENDING order

Incorrect answer :

A result in ascending order

B wrong syntax with SORT keyword

C wrong syntax with SORT keyword

D default value for ORDER by is in ascending order

E wrong syntax with SORT keyword

Refer : Introduction to Oracle9i : SQL, Oracle University Study Guide, 2-22

QUESTION 132:

Which describes the default behavior when you create a table?

A. The table is accessible to all users.

B. Tables are created in the public schema.

C. Tables are created in your schema.

D. Tables are created in the DBA schema.

E. You must specify the schema when the table is created.

Answer: C

Explanation :

sorted by highest to lowest is DESCENDING order

Incorrect answer :

A grant the table privilege to PUBLIC

B login as sysoper

D login as DBA or sysdba

E no such option is allow.

Refer : Introduction to Oracle9i : SQL, Oracle University Study Guide, 9-9

QUESTION 133:

Which four are attributes of single row functions? (Choose four.)

A. cannot be nested

B. manipulate data items

C. act on each row returned

D. return one result per row

E. accept only one argument and return only one value

F. accept arguments which can be a column or an expression

Answer: B, C, D, F

Explanation :

manipulate data items, act on each row returned, return one result per row, and accept arguments that can be a column or expression.

Incorrect answer :

A is not single row attributes

E functions can accept more than one argument, e.g NVL2

Refer : Introduction to Oracle9i : SQL, Oracle University Study Guide, 3-5

QUESTION 134:

You need to create a table named ORDERS that contain four columns:

1. an ORDER_ID column of number data type
2. aCUSTOMER_ID column of number data type
3. an ORDER_STATUS column that contains a character data type
4. aDATE_ORDERED column to contain the date the order was placed.

When a row is inserted into the table, if no value is provided when the order was placed, today's date should be used instead.

Which statement accomplishes this?

- A. CREATE TABLE orders (
order_id NUMBER (10),
customer_id NUMBER (8),
order_status VARCHAR2 (10),
date_ordered DATE = SYSDATE);
- B. CREATE TABLE orders (
order_id NUMBER (10),
customer_id NUMBER (8),
order_status VARCHAR2 (10),
date_ordered DATE DEFAULT SYSDATE);
- C. CREATE OR REPLACE TABLE orders (
order_id NUMBER (10),
customer_id NUMBER (8),
order_status VARCHAR2 (10),
date_ordered DATE DEFAULT SYSDATE);
- D. CREATE OR REPLACE TABLE orders (
order_id NUMBER (10),
customer_id NUMBER (8),
order_status VARCHAR2 (10),
date_ordered DATE = SYSDATE);
- E. CREATE TABLE orders (
order_id NUMBER (10),
customer_id NUMBER (8),
order_status NUMBER (10),
date_ordered DATE = SYSDATE);
- F. CREATE TABLE orders (
order_id NUMBER (10),
customer_id NUMBER (8),

order_status NUMBER (10),
date_ordered DATE DEFAULT SYSDATE);

Answer: B

Explanation: Requirement that OrderStatus should be a character data type
Not E: Orderstatus must be a character data type. There is also a syntax error.

QUESTION 135:

Examine the structure of the EMPLOYEES table:

EMPLOYEE_ID NUMBER Primary Key
FIRST_NAME VARCHAR2(25)
LAST_NAME VARCHAR2(25)

Which three statements insert a row into the table? (Choose three.)

- A. INSERT INTO employees VALUES (NULL, 'John', 'smith');
- B. INSERT INTO employees (first_name, last_name) VALUES ('John', 'smith');
- C. INSERT INTO employees VALUES ('1000', 'John', 'smith');
- D. INSERT INTO employees (first_name, last_name, employee_id) VALUES (1000, 'John', 'smith');
- E. INSERT INTO employees (employee_id) VALUES (1000);
- F. INSERT INTO employees (employee_id, first_name, last_name,) VALUES (1000, 'John',");

Answer: C, E, F

Explanation :

EMPLOYEE_ID is a primary key.

Incorrect answer :

A EMPLOYEE_ID cannot be null

B EMPLOYEE_ID cannot be null

D mismatch of field_name with datatype

Refer : Introduction to Oracle9i : SQL, Oracle University Study Guide, 10-11

QUESTION 136:

The user Sue issues this SQL statement:

GRANT SELECT ON sue. EMP TO alicia WITH GRANT OPTION;

The user Alicia issues this SQL statement:

GRANT SELECT ON sue. EMP TO reena WITH GRANT OPTION;

The user Reena issues this SQL statement:

GRANT SELECT ON sue. EMP TO timber;

The user Sue issues this SQL statement:

REVOKE select on sue. EMP FROM alicia;

For which users does the revoke command revoke SELECT privileges on the SUE.EMP table?

- A. Alicia only

- B. Alice and Reena
- C. Alice, Reena, and Timber
- D. Sue, Alice, Reena, and Timber

Answer: C

Explanation :

use the REVOKE statement to revoke privileges granted to other users. Privilege granted to others through the WITH GRANT OPTION clause are also revoked.

Alice, Reena and Timber will be revoke.

Incorrect answer :

A the correct answer should be Alice, Reena and Timber

B the correct answer should be Alice, Reena and Timber

D the correct answer should be Alice, Reena and Timber

Refer : Introduction to Oracle9i : SQL, Oracle University Study Guide, 13-17

QUESTION 137:

The EMPLOYEES table contains these columns:

EMPLOYEE_ID NUMBER(4)

LAST_NAME VARCHAR2 (25)

JOB_ID VARCHAR2(10)

You want to search for strings that contain 'SA_' in the JOB_ID column. Which SQL statement do you use?

- A. SELECT employee_id, last_name, job_id FROM employees WHERE job_id LIKE '%SA_%' ESCAPE '\';
- B. SELECT employee_id, last_name, job_id FROM employees WHERE job_id LIKE '%SA_';
- C. SELECT employee_id, last_name, job_id FROM employees WHERE job_id LIKE '%SA_' ESCAPE '\';
- D. SELECT employee_id, last_name, job_id FROM employees WHERE job_id '%SA_';

Answer: A

Explanation :

ESCAPE identifier to search for the actual % and _ symbol

Incorrect answer :

B ESCAPE identifier must be use

C wrong syntax

D wrong syntax

Refer : Introduction to Oracle9i : SQL, Oracle University Study Guide, 2-13

QUESTION 138:

The CUSTOMERS table has these columns:

CUSTOMER_ID NUMBER(4) NOT NULL

CUSTOMER_NAME VARCHAR2(100) NOT NULL

CUSTOMER_ADDRESS VARCHAR2(150)

CUSTOMER_PHONE VARCHAR2(20)

You need to produce output that states "Dear Customer customer_name, ".

The customer_name data values come from the CUSTOMER_NAME column in the CUSTOMERS table.

Which statement produces this output?

- A. SELECT dear customer, customer_name, FROM customer;
- B. SELECT "Dear Customer", customer_name, ||',' FROM customer;
- C. SELECT 'Dear Customer' || customer_name ',' FROM customer;
- D. SELECT 'Dear Customer' || customer_name || ',' FROM customer;
- E. SELECT "Dear Customer" || customer_name || "," FROM customer;
- F. SELECT 'Dear Customer' || customer_name || ',' FROM customer;

Answer: D

Explanation :

Concatenation operator to create a resultant column that is a character expression.

Incorrect answer :

- A no such dear customer column
- B invalid syntax
- C invalid syntax
- E invalid syntax
- F invalid syntax

Refer : Introduction to Oracle9i : SQL, Oracle University Study Guide, 1-18

QUESTION 139:

What is true about sequences?

- A. Once created, a sequence belongs to a specific schema.
- B. Once created, a sequence is linked to a specific table.
- C. Once created, a sequence is automatically available to all users.
- D. Only the DBA can control which sequence is used by a certain table.
- E. Once created, a sequence is automatically used in all INSERT and UPDATE statements.

Answer: A

QUESTION 140:

Which object privileges can be granted on a view?

- A. none
- B. DELETE, INSERT,SELECT
- C. ALTER, DELETE, INSERT, SELECT
- D. DELETE, INSERT, SELECT, UPDATE

Answer: D

Explanation :

Object privilege on VIEW is DELETE, INSERT, REFERENCES, SELECT and UPDATE.

Incorrect answer :

A Object privilege on VIEW is DELETE, INSERT, REFERENCES, SELECT and UPDATE

B Object privilege on VIEW is DELETE, INSERT, REFERENCES, SELECT and UPDATE

C Object privilege on VIEW is DELETE, INSERT, REFERENCES, SELECT and UPDATE

Refer : Introduction to Oracle9i : SQL, Oracle University Study Guide, 13-12

QUESTION 141:

Examine the SQL statement that creates ORDERS table:

```
CREATE TABLE orders (SER_NO NUMBER UNIQUE, ORDER_ID NUMBER, ORDER_DATE DATE NOT NULL, STATUS VARCHAR2(10) CHECK (status IN ('CREDIT', 'CASH')), PROD_ID NUMBER REFERENCES PRODUCTS(PRODUCT_ID), ORD_TOTAL NUMBER, PRIMARY KEY (order_id, order_date));
```

For which columns would an index be automatically created when you execute the above SQL statement?

(Choose two.)

A. SER_NO

B. ORDER_ID

C. STATUS

D. PROD_ID

E. ORD_TOTAL

F. composite index on ORDER_ID and ORDER_DATE

Answer: A, F

Explanation :

Index exist for UNIQUE and PRIMARY KEY constraints

Incorrect answer :

B ORDER_ID is neither UNIQUE nor PRIMARY KEY

C STATUS is neither UNIQUE nor PRIMARY KEY

D PROD_ID is neither UNIQUE nor PRIMARY KEY

E ORD_TOTAL is neither UNIQUE nor PRIMARY KEY

Refer : Introduction to Oracle9i : SQL, Oracle University Study Guide, 10-15

QUESTION 142:

What is true of using group functions on columns that contain NULL values?

A. Group functions on columns ignore NULL values.

B. Group functions on columns returning dates include NULL values.

C. Group functions on columns returning numbers include NULL values.

D. Group functions on columns cannot be accurately used on columns that contain NULL values.

E. Group functions on columns include NULL values in calculations if you use the keyword INC_NULLS.

Answer: A

Explanation :

group functions on column ignore NULL values

Incorrect answer :

B group functions on column ignore NULL values

C group functions on column ignore NULL values

D NVL function can be use for column with NULL values

E no such INC_NULLS keyword

Refer : Introduction to Oracle9i : SQL, Oracle University Study Guide, 5-12

QUESTION 143:

The STUDENT_GRADES table has these columns:

STUDENT_ID NUMBER(12)

SEMESTER_END DATE

GPA NUMBER(4,3)

Which statement finds the highest grade point average (GPA) per semester?

A. SELECT MAX (gpa) FROM student _ grades WHERE gpa IS NOT NULL;

B. SELECT (gpa) FROM student _ grades GROUP BY semester_end WHERE gpa IS NOT NULL;

C. SELECT MAX (gpa) FROM student _ grades WHERE gpa IS NOT NULL GROUP BY semester_end;

D. SELECT MAX (gpa) GROUP BY semester_end WHERE gpa IS NOT NULL FROM student _ grades;

E. SELECT MAX (gpa) FROM student _ grades GROUP BY semester_end WHERE gpa IS NOT NULL;

Answer: C

Explanation :

for highest gpa value MAX function is needed,

for result with per semester GROUP BY clause is needed

Incorrect answer :

A per semester condition is not included

B result would not display the highest gpa value

D invalid syntax error

E invalid syntax error

Refer : Introduction to Oracle9i : SQL, Oracle University Study Guide, 5-7

QUESTION 144:

In which four clauses can a subquery be used? (Choose four.)

A. in the INTO clause of an INSERT statement

B. in the FROM clause of a SELECT statement

C. in the GROUP BY clause of a SELECT statement

- D. in the WHERE clause of a SELECT statement
- E. in the SET clause of an UPDATE statement
- F. in the VALUES clause of an INSERT statement

Answer: A, B, D, E

Explanation :

- A: a subquery is valid on the INTO clause of an INSERT Statement
 - B: a subquery can be used in the FROM clause of a SELECT statement
 - D: a subquery can be used in the WHERE clause of a SELECT statement,
 - E: a subquery can be used in the SET clauses of an UPDATE statement,
- Incorrect answer :
- C subquery cannot be used
 - F: is incorrect.
- Refer : Introduction to Oracle9i : SQL, Oracle University Study Guide, 6-5
-

QUESTION 145:

Examine this statement:

```
SELECT student_id, gpa FROM student_grades WHERE gpa >&&value;
```

You run the statement once, and when prompted you enter a value of 2.0. A report is produced. What happens when you run the statement a second time?

- A. An error is returned.
- B. You are prompted to enter a new value.
- C. A report is produced that matches the first report produced.
- D. You are asked whether you want a new value or if you want to run the report based on the previous value.

Answer: C

Explanation :

use the double-ampersand if you want to reuse the variable value without prompting the user each time.

Incorrect answer :

- A is not an error
- B && will not prompt user for second time
- D && will not ask the user for new value

Refer : Introduction to Oracle9i : SQL, Oracle University Study Guide, 7-13

QUESTION 146:

Which SQL statement returns a numeric value?

- A. SELECT ADD_MONTHS(MAX(hire_Date), 6)
FROM EMP;
- B. SELECT ROUND(hire_date)
FROM EMP;
- C. SELECT sysdate-hire_date

```
FROM EMP;  
D. SELECT TO_NUMBER(hire_date + 7)  
FROM EMP;
```

Answer: C

Explanation :

DATE value subtract DATE value will return numeric value.

Incorrect answer :

A does not return numeric value

B does not return numeric value

D does not return numeric value

Refer : Introduction to Oracle9i : SQL, Oracle University Study Guide, 9-13

QUESTION 147:

What are two reasons to create synonyms? (Choose two.)

- A. You have too many tables.
- B. Your tables are too long.
- C. Your tables have difficult names.
- D. You want to work on your own tables.
- E. You want to use another schema's tables.
- F. You have too many columns in your tables.

Answer: B, C

Explanation :

Create a synonyms when the names of the tables are too long or the table names are difficult.

Incorrect answers:

A The number of tables in a schema is not a consideration when creating a synonym.

Refer : Introduction to Oracle9i : SQL, Oracle University Study Guide, 12-24

QUESTION 148:

What is true about updates through a view?

- A. You cannot update a view with group functions.
- B. When you update a view group functions are automatically computed.
- C. When you update a view only the constraints on the underlying table will be in effect.
- D. When you update a view the constraints on the views always override the constraints on the underlying tables.

Answer: A

QUESTION 149:

You need to write a SQL statement that returns employee name, salary, department ID, and maximum salary earned in the department of the employee for all employees who earn less than the maximum salary in their department.

Which statement accomplishes this task?

- A. SELECT a.emp_name, a.sal, b.dept_id, MAX(sal) FROM employees a, departments b WHERE a.dept_id = b.dept_id AND a.sal < MAX(sal) GROUP BY b.dept_id;
- B. SELECT a.emp_name, a.sal, a.dept_id, b.maxsal FROM employees a, (SELECT dept_id, MAX(sal) maxsal FROM employees GROUP BY dept_id) b WHERE a.dept_id = b.dept_id AND a.sal < b.maxsal;
- C. SELECT a.emp_name, a.sal, a.dept_id, b.maxsal FROM employees a WHERE a.sal < (SELECT MAX(sal) maxsal FROM employees b GROUP BY dept_id);
- D. SELECT emp_name, sal, dept_id, maxsal FROM employees, (SELECT dept_id, MAX(sal) maxsal FROM employees GROUP BY dept_id) WHERE a.sal < maxsal;

Answer: B

Explanation :

function MAX(column_name)

Incorrect answer :

A invalid statement

C inner query return more than one line

D column maxsal does not exists.

Refer : Introduction to Oracle9i : SQL, Oracle University Study Guide, 5-7

QUESTION 150:

The CUSTOMERS table has these columns:

CUSTOMER_ID NUMBER(4) NOT NULL

CUSTOMER_NAME VARCHAR2(100) NOT NULL

STREET_ADDRESS VARCHAR2(150)

CITY_ADDRESS VARCHAR2(50)

STATE_ADDRESS VARCHAR2(50)

PROVINCE_ADDRESS VARCHAR2(50)

COUNTRY_ADDRESS VARCHAR2(50)

POSTAL_CODE VARCHAR2(12)

CUSTOMER_PHONE VARCHAR2(20)

A promotional sale is being advertised to the customers in France. Which WHERE clause identifies customers that are located in France?

- A. WHERE lower(country_address) = "france"
- B. WHERE lower(country_address) = 'france'
- C. WHERE lower(country_address) IS 'france'
- D. WHERE lower(country_address) = '%france%'
- E. WHERE lower(country_address) LIKE %france%

Answer: B

Explanation :

WHERE lower(country_address)='france'

Incorrect answer :

A invalid use of symbol ""

C invalid use of IS keyword

D invalid use of % in condition

E invalid use of condition

Refer : Introduction to Oracle9i : SQL, Oracle University Study Guide, 2-12

QUESTION 151:

Which are iSQL*Plus commands? (Choose all that apply.)

A. INSERT

B. UPDATE

C. SELECT

D. DESCRIBE

E. DELETE

F. RENAME

Answer: D

Explanation :

The only SQL*Plus command in this list : DESCRIBE. It cannot be used as SQL command. This command returns a description of tablename, including all columns in that table, the datatype for each column and an indication of whether the column permits storage of NULL values.

Incorrect answer:

A INSERT is not a SQL*PLUS command

B UPDATE is not a SQL*PLUS command

C SELECT is not a SQL*PLUS command

E DELETE is not a SQL*PLUS command

F RENAME is not a SQL*PLUS command

Refer : Introduction to Oracle9i : SQL, Oracle University Study Guide, 7

QUESTION 152:

Examine the description of the CUSTOMERS table:

CUSTOMER_ID NUMBER(4) NOT NULL

CUSTOMER_NAME VARCHAR2(100) NOT NULL

STREET_ADDRESS VARCHAR2(150)

CITY_ADDRESS VARCHAR2(50)

STATE_ADDRESS VARCHAR2(50)

PROVINCE_ADDRESS VARCHAR2(50)

COUNTRY_ADDRESS VARCHAR2(50)
POSTAL_CODE VARCHAR2(12)
CUSTOMER_PHONE VARCHAR2(20)

The CUSTOMER_ID column is the primary key for the table.

Which statement returns the city address and the number of customers in the cities Los Angeles or San Francisco?

- A. SELECT city_address, COUNT(*)
FROM customers
WHERE city _ address IN ('Los Angeles','San Fransisco');
- B. SELECT city_address, COUNT (*)
FROM customers
WHERE city address IN ('Los Angeles', 'San Fransisco')
GROUP BY city_address;
- C. SELECT city_address, COUNT(customer_id)
FROM customers
WHERE city_address IN ('Los Angeles', 'San Fransisco')
GROUP BY city_address, customer_id;
- D. SELECT city_address, COUNT (customer_id)
FROM customers
GROUP BY city_ address IN ('Los Angeles','San Fransisco');

Answer: B

Explanation:

Not C: The customer ID in the GROUP BY clause is wrong

QUESTION 153:

What does the FORCE option for creating a view do?

- A. creates a view with constraints
- B. creates a view even if the underlying parent table has constraints
- C. creates a view in another schema even if you don't have privileges
- D. creates a view regardless of whether or not the base tables exist

Answer: D

Explanation :

create a view regardless of whether or not the base tables exist.

Incorrect answer :

- A the option is not valid
- B the option is not valid
- C the option is not valid

Refer : Introduction to Oracle9i : SQL, Oracle University Study Guide, 11-3

QUESTION 154:

A data manipulation language statement _____.

- A. completes a transaction on a table
- B. modifies the structure and data in a table
- C. modifies the data but not the structure of a table
- D. modifies the structure but not the data of a table

Answer: C

Explanation :

modifies the data but not the structure of a table

Incorrect answer :

A DML does not complete a transaction

B DDL modifies the structure and data in the table

D DML does not modified table structure.

Refer : Introduction to Oracle9i : SQL, Oracle University Study Guide, 8-3

QUESTION 155:

Which two tasks can you perform using only the TO_CHAR function? (Choose two.)

- A. convert 10 to 'TEN'
- B. convert '10' to 10
- C. convert 10 to '10'
- D. convert 'TEN' to 10
- E. convert a date to a character expression
- F. convert a character expression to a date

Answer: C, E

Explanation :

converting data type into characters.

Incorrect answer :

A does not serve TO_CHAR function

B does not serve TO_CHAR function

D does not serve TO_CHAR function

F does not serve TO_CHAR function

Refer : Introduction to Oracle9i : SQL, Oracle University Study Guide, 3-31

QUESTION 156:

The DBA issues this SQL command:

```
CREATE USER scott IDENTIFIED BY tiger;
```

What privileges does the user Scott have at this point?

- A. no privileges
- B. only the SELECT privilege
- C. only the CONNECT privilege
- D. all the privileges of a default user

Answer: A

Explanation :

when a user is created, by default no privilege is granted

Incorrect answer :

B SELECT is not grant

C CONNECT is not grant

D default profile is grant by default not privilege.

Refer : Introduction to Oracle9i : SQL, Oracle University Study Guide, 13-6

QUESTION 157:

Exhibit:

LAST_NAME	DEPARTMENT_ID	SALARY
Getz	10	3000
Davis	20	1500
Bill	20	2200
Davis	30	5000
...		

Examine the data in the EMPLOYEES table.

Examine the subquery:

```
SELECT last_name
```

```
FROM employees
```

```
WHERE salary IN (SELECT MAX(salary)
```

```
FROM employees
```

```
GROUP BY department_id);
```

Which statement is true?

- A. The SELECT statement is syntactically accurate.
- B. The SELECT statement does not work because there is no HAVING clause.
- C. The SELECT statement does not work because the column specified in the GROUP BY clause is not in the SELECT list.
- D. The SELECT statement does not work because the GROUP BY clause should be in the main query and not in the subquery.

Answer: A

QUESTION 158:

Examine the statement:

GRANT select, insert, update
ON student_grades
TO manager
WITH GRANT OPTION;
Which two are true? (Choose two.)

- A. MANAGER must be a role.
- B. It allows the MANAGER to pass the specified privileges on to other users.
- C. It allows the MANAGER to create tables that refer to the STUDENT_GRADES table.
- D. It allows the MANAGER to apply all DML statements on the STUDENT_GRADES table.
- E. It allows the MANAGER the ability to select from, insert into, and update the STUDENT_GRADES table.
- F. It allows the MANAGER the ability to select from, delete from, and update the STUDENT_GRADES table.

Answer: B, E

Explanation :

GRANT ROLE to ROLE/USER

Incorrect answer :

A Role can be grant to user

C Create table privilege is not granted

D Execute privilege is not granted

F Delete privilege is not granted

Refer : Introduction to Oracle9i : SQL, Oracle University Study Guide, 13-15

QUESTION 159:

Which best describes an inline view?

- A. a schema object
- B. a subquery that can contain an ORDER BY clause
- C. another name for a view that contains group functions
- D. a subquery that is part of the FROM clause of another query

Answer: D

Explanation :

a subquery that is part of the FROM clause of another query

Incorrect answer :

A is not a schema object

B subquery can contain GROUP BY clause as well.

C does not necessary contains group functions

Refer : Introduction to Oracle9i : SQL, Oracle University Study Guide, 11-21

QUESTION 160:

Examine the structure of the EMPLOYEES and DEPARTMENTS tables:

EMPLOYEES

EMPLOYEE_ID NUMBER

DEPARTMENT_ID NUMBER

MANAGER_ID NUMBER

LAST_NAME VARCHAR2(25)

DEPARTMENTS

DEPARTMENT_ID NUMBER

MANAGER_ID NUMBER

DEPARTMENT_NAME VARCHAR2(35)

LOCATION_ID NUMBER

You want to create a report displaying employee last names, department names, and locations. Which query should you use to create an equi-join?

A. SELECT last_name, department_name, location_id

FROM employees , department ;

B. SELECT employees.last_name, departments.department_name, departments.location_id

FROM employees e, departments D

WHERE e.department_id = d.department_id;

C. SELECT e.last_name, d.department_name, d.location_id

FROM employees e, departments D

WHERE manager_id = manager_id;

D. SELECT e.last_name, d.department_name, d.location_id

FROM employees e, departments D

WHERE e.department_id = d.department_id;

Answer: D

Explanation :

Equijoins are also called simple joins or inner joins. Equijoin involve primary key and foreign key.

Incorrect answer :

A there is no join

B invalid syntax

C does not involve the join in the primary and foreign key

Refer : Introduction to Oracle9i : SQL, Oracle University Study Guide, 4-8

QUESTION 161:

The PRODUCTS table has these columns:

PRODUCT_ID NUMBER(4)

PRODUCT_NAME VARCHAR2(45)

PRICE NUMBER(8,2)

Evaluate this SQL statement:

SELECT *

FROM PRODUCTS

ORDER BY price, product _ name;

What is true about the SQL statement?

- A. The results are not sorted.
- B. The results are sorted numerically.
- C. The results are sorted alphabetically.
- D. The results are sorted numerically and then alphabetically.

Answer: D

Explanation :

the result is sort by price which is numeric and follow by product_name which is alphabetically.

Incorrect answer :

A the results are sorted

B the results are sorted with alphabetically as well

C the results are sorted with numerically as well

Refer : Introduction to Oracle9i : SQL, Oracle University Study Guide, 2-2

QUESTION 162:

In which two cases would you use an outer join? (Choose two.)

- A. The tables being joined have NOT NULL columns.
- B. The tables being joined have only matched data.
- C. The columns being joined have NULL values.
- D. The tables being joined have only unmatched data.
- E. The tables being joined have both matched and unmatched data.
- F. Only when the tables have a primary key/foreign key relationship.

Answer: C, E

Explanation :

You use an outer join to also see rows that do not meet the join condition.

Incorrect answer :

A meet a join condition

B meet a join condition

D meet non join condition only

F does not take into consideration of primary key and foreign key relationship

Refer : Introduction to Oracle9i : SQL, Oracle University Study Guide, 4-17

QUESTION 163:

Which constraint can be defined only at the column level?

- A. UNIQUE
- B. NOT NULL
- C. CHECK
- D. PRIMARY KEY

E. FOREIGN KEY

Answer: B

Explanation :

the NOT NULL constraint can be specified only at the column level, not at the table level.

Incorrect answer :

A UNIQUE can be define at table level

C CHECK can be define at table level

D PRIMARY KEY can be define at table level

E FOREIGN KEY can be define at table level

Refer : Introduction to Oracle9i : SQL, Oracle University Study Guide, 10-8

QUESTION 164:

Examine the structure of the EMPLOYEES table:

EMPLOYEE_ID NUMBER NOT NULL

EMP_NAME VARCHAR2(30)

JOB_ID VARCHAR2(20)

SAL NUMBER

MGR_ID NUMBER

DEPARTMENT_ID NUMBER

You want to create a SQL script file that contains an INSERT statement. When the script is run, the INSERT statement should insert a row with the specified values into the EMPLOYEES table. The INSERT statement should pass values to the table columns as specified below:

EMPLOYEE_ID: Next value from the sequence

EMP_ID_SEQEMP_NAME and JOB_ID: As specified by the user during run time, through substitution variables

SAL: 2000

MGR_ID: No value

DEPARTMENT_ID: Supplied by the user during run time through substitution variable. The INSERT statement should fail if the user supplies a value other than 20 or 50.

Which INSERT statement meets the above requirements?

A. INSERT INTO employees

VALUES (emp_id_seq.NEXTVAL, &ename, '&jobid', 2000, NULL, &did);

B. INSERT INTO employees

VALUES (emp_id_seq.NEXTVAL, '&ename', '&jobid',

2000, NULL, &did IN (20,50));

C. INSERT INTO (SELECT *

FROM employees

WHERE department_id IN (20,50))

VALUES (emp_id_seq.NEXTVAL, &ename, '&jobid', 2000, NULL, &did);

D. INSERT INTO (SELECT *

FROM employees

WHERE department_id IN (20,50)

```
WITH CHECK OPTION)
VALUES (emp_id_seq.NEXTVAL, &ename,'&jobid', 2000, NULL, &did);
E. INSERT INTO (SELECT *
FROM employees
WHERE (department_id = 20 AND
department_id = 50)
WITH CHECK OPTION )
VALUES (emp_id_seq.NEXTVAL, &ename,'&jobid', 2000, NULL, &did);
```

Answer: D

QUESTION 165:

The user Alice wants to grant all users query privileges on her DEPT table. Which SQL statement accomplishes this?

- A. GRANT select ON dept
TO ALL_ USER;
- B. GRANT select ON dept
TO ALL;
- C. GRANT QUERY ON dept
TO ALL_USERS
- D. GRANT select ON dept
TO PUBLIC;

Answer: D

Explanation :

view the columns associated with the constraint names in the USER_CONS_COLUMNS view.

Incorrect answer :

A table to view all constraints definition and names

B show all object name belong to user

C does not display column associated

E no such view

Refer : Introduction to Oracle9i : SQL, Oracle University Study Guide, 10-25

QUESTION 166:

Which view should a user query to display the columns associated with the constraints on a table owned by the user?

- A. USER_CONSTRAINTS
- B. USER_OBJECTS
- C. ALL_CONSTRAINTS
- D. USER_CONS_COLUMNS
- E. USER_COLUMNS

Answer: D

Explanation :

view the columns associated with the constraint names in the USER_CONS_COLUMNS view.

Incorrect answer :

A table to view all constraints definition and names

B show all object name belong to user

C does not display column associated

E no such view

Refer : Introduction to Oracle9i : SQL, Oracle University Study Guide, 10-25

QUESTION 167:

Examine these statements:

```
CREATE ROLE registrar
```

```
GRANT UPDATE ON dtudent_grades TO registrar;
```

```
GRANT registrar to user1, user2, user3;
```

What does this set of SQL statements do?

A. The set of statements contains an error and does not work.

B. It creates a role called REGISTRAR, adds the MODIFY privilege on the STUDENT_GRADES object to the role, and gives the REGISTRAR role to three users.

C. It creates a role called REGISTRAR, adds the UPDATE privilege on the STUDENT_GRADES object to the role, and gives the REGISTRAR role to three users.

D. It creates a role called REGISTRAR, adds the UPDATE privilege on the STUDENT_GRADES object to the role, and creates three users with the role.

E. It creates a role called REGISTRAR, adds the UPDATE privilege on three users, and gives the REGISTRAR role to the STUDENT_GRADES object.

F. It creates a role called STUDENT_GRADES, adds the UPDATE privilege on three users, and gives the UPDATE role to the registrar.

Answer: C

Explanation :

the statement will create a role call REGISTRAR, grant UPDATE on student_grades to registrar, grant the role to user1,user2 and user3.

Incorrect answer :

A the statement does not contain error

B there is no MODIFY privilege

D statement does not create 3 users with the role

E privilege is grant to role then grant to user

F privilege is grant to role then grant to user

QUESTION 168:

Which two statements about subqueries are true? (Choose two.)

- A. A subquery should retrieve only one row.
- B. A subquery can retrieve zero or more rows.
- C. A subquery can be used only in SQL query statements.
- D. Subqueries CANNOT be nested by more than two levels.
- E. A subquery CANNOT be used in an SQL query statement that uses group functions.
- F. When a subquery is used with an inequality comparison operator in the outer SQL statement, the column list in the SELECT clause of the subquery should contain only one column.

Answer: B, F

Explanation :

subquery can retrieve zero or more rows, subquery is used with an inequality comparison operator in the outer SQL statement, the column list in the SELECT clause of the subquery should contain only one column.

Incorrect answer :

A subquery can retrieve zero or more rows

C subquery is not SQL query statement

D subquery can be nested

E group function can be use with subquery

QUESTION 169:

You need to design a student registration database that contains several tables storing academic information.

The STUDENTS table stores information about a student. The STUDENT_GRADES table stores information about the student's grades. Both of the tables have a column named STUDENT_ID. The STUDENT_ID column in the STUDENTS table is a primary key.

You need to create a foreign key on the STUDENT_ID column of the STUDENT_GRADES table that points to the STUDENT_ID column of the STUDENTS table. Which statement creates the foreign key?

- A. CREATE TABLE student_grades (student_id NUMBER(12),semester_end DATE, gpa NUMBER(4,3), CONSTRAINT student_id_fk REFERENCES (student_id) FOREIGN KEY student (student_id));
- B. CREATE TABLE student_grades(student_id NUMBER(12),semester_end DATE, gpa NUMBER(4,3), student_id_fk FOREIGN KEY (student_id) REFERENCES students (student_id));
- C. CREATE TABLE student_grades(student_id NUMBER(12),semester_end DATE, gpa NUMBER(4,3), CONSTRAINT FOREIGN KEY (student_id) REFERENCES student (student_id));
- D. CREATE TABLE student_grades(student_id NUMBER(12),semester_end DATE, gpa NUMBER(4,3), CONSTRAINT student_id_fk FOREIGN KEY (student_id) REFERENCES students (student_id));

Answer: D

Explanation :

CONSTRAINT name FOREIGN KEY (column_name) REFERENCES table_name (column_name);

Incorrect answer :

A invalid syntax

B invalid syntax

C invalid syntax

Refer : Introduction to Oracle9i : SQL, Oracle University Study Guide, 10-14

QUESTION 170:

Evaluate the SQL statement:

TRUNCATE TABLE DEPT;

Which three are true about the SQL statement? (Choose three.)

A. It releases the storage space used by the table.

B. It does not release the storage space used by the table.

C. You can roll back the deletion of rows after the statement executes.

D. You can NOT roll back the deletion of rows after the statement executes.

E. An attempt to use DESCRIBE on the DEPT table after the TRUNCATE statement executes will display an error.

F. You must be the owner of the table or have DELETE ANY TABLE system privileges to truncate the DEPT table

Answer: A, D, F

Explanation :

A: The TRUNCATE TABLE Statement releases storage space used by the table,

D: Can not rollback the deletion of rows after the statement executes,

F: You must be the owner of the table or have DELETE ANY TABLE system privilege to truncate the DEPT table.

Incorrect answer :

C is not true

D is not true

E is not true

Refer : Introduction to Oracle9i : SQL, Oracle University Study Guide, 8-18

QUESTION 171:

Which two statements are true about constraints? (Choose two.)

A. The UNIQUE constraint does not permit a null value for the column.

B. A UNIQUE index gets created for columns with PRIMARY KEY and UNIQUE constraints.

C. The PRIMARY KEY and FOREIGN KEY constraints create a UNIQUE index.

D. The NOT NULL constraint ensures that null values are not permitted for the column.

Answer: B, D

Explanation :

B: A unique constraint can contain null values because null values cannot be compared to anything.

D: The NOT NULL constraint ensure that null value are not permitted for the column

Incorrect answer :

A statement is not true

C statement is not true

Refer : Introduction to Oracle9i : SQL, Oracle University Study Guide, 10-9

QUESTION 172:

Which three are true? (Choose three.)

- A. A MERGE statement is used to merge the data of one table with data from another.
- B. A MERGE statement replaces the data of one table with that of another.
- C. A MERGE statement can be used to insert new rows into a table.
- D. A MERGE statement can be used to update existing rows in a table.

Answer: A, C, D

Explanation : The MERGE Statement allows you to conditionally insert or update data in a table. If the rows are present in the target table which match the join condition, they are updated if the rows are not present they are inserted into the target table

QUESTION 173:

Which is a valid CREATE TABLE statement?

- A. CREATE TABLE EMP9\$# AS (empid number(2));
- B. CREATE TABLE EMP*123 AS (empid number(2));
- C. CREATE TABLE PACKAGE AS (packid number(2));
- D. CREATE TABLE 1EMP_TEST AS (empid number(2));

Answer: A

Explanation :

Table names and column names must begin with a letter and be 1-30 characters long. Characters A-Z,a-z, 0-9, _, \$ and # (legal characters but their use is discouraged).

Incorrect answer :

B Non alphanumeric character such as "*" is discourage in Oracle table name.

D Table name must begin with a letter.

Refer : Introduction to Oracle9i : SQL, Oracle University Study Guide, 9-4

QUESTION 174:

A SELECT statement can be used to perform these three functions:

1. Choose rows from a table.
2. Choose columns from a table
3. Bring together data that is stored in different tables by creating a link between them.

Which set of keywords describes these capabilities?

- A. difference, projection, join
- B. selection, projection, join
- C. selection, intersection, join
- D. intersection, projection, join
- E. difference, projection, product

Answer: B

Explanation :

choose rows from a table is SELECTION,

Choose column from a table is PROJECTION

Bring together data in different table by creating a link between them is JOIN.

Incorrect answer :

A answer should have SELECTION, PROJECTION and JOIN.

C answer should have SELECTION, PROJECTION and JOIN.

D answer should have SELECTION, PROJECTION and JOIN.

E answer should have SELECTION, PROJECTION and JOIN.

Refer : Introduction to Oracle9i : SQL, Oracle University Study Guide, 1-6

QUESTION 175:

Which four are types of functions available in SQL? (Choose 4)

- A. string
- B. character
- C. integer
- D. calendar
- E. numeric
- F. translation
- G. date
- H. conversion

Answer: B, E, G, H

Explanation :

SQL have character, numeric, date, conversion function.

Incorrect answer :

A SQL have character, numeric, date, conversion function.

C SQL have character, numeric, date, conversion function.

D SQL have character, numeric, date, conversion function.

F SQL have character, numeric, date, conversion function.

Refer : Introduction to Oracle9i : SQL, Oracle University Study Guide, 3-3

QUESTION 176:

[1Z0-007](#)

Examine the structure of the EMPLOYEES table:

EMPLOYEE_ID NUMBER NOT NULL, Primary Key

EMP_NAME VARCHAR2(30)

JOB_ID NUMBER\

SAL NUMBER

MGR_ID NUMBER References EMPLOYEE_ID column

DEPARTMENT_ID NUMBER Foreign key to DEPARTMENT_ID column of the DEPARTMENTS table

You created a sequence called EMP_ID_SEQ in

orderto populate sequential values for the EMPLOYEE_ID column of the EMPLOYEES table.

Which two statements regarding the EMP_ID_SEQ sequence are true? (Choose two.)

- A. You cannot use the EMP_ID_SEQ sequence to populate the JOB_ID column.
- B. The EMP_ID_SEQ sequence is invalidated when you modify the EMPLOYEE_ID column.
- C. The EMP_ID_SEQ sequence is not affected by modifications to the EMPLOYEES table.
- D. Any other column of NUMBER data type in your schema can use the EMP_ID_SEQ sequence.
- E. The EMP_ID_SEQ sequence is dropped automatically when you drop the EMPLOYEES table.
- F. The EMP_ID_SEQ sequence is dropped automatically when you drop the EMPLOYEE_ID column.

Answer: C, D

Explanation :

the EMP_ID_SEQ sequence is not affected by modification to the EMPLOYEES table. Any other column of NUMBER data type in your schema can use the EMP_ID_SEQ sequence.

Incorrect answer :

A EMP_ID_SEQ sequence can be use to populate JOB_ID

B EMP_ID_SEQ sequence will not be invalidate when column in EMPLOYEE_ID is modify.

E EMP_ID_SEQ sequence will be dropped automatically when you drop the EMPLOYEES table.

F EMP_ID_SEQ sequence will be dropped automatically when you drop the EMPLOYEE_ID column.

Refer : Introduction to Oracle9i : SQL, Oracle University Study Guide, 12-4

QUESTION 177:

Which object privileges can be granted on a view?

- A. none
- B. DELETE, INSERT,SELECT
- C. ALTER, DELETE, INSERT, SELECT
- D. DELETE, INSERT, SELECT, UPDATE

Answer: D

Explanation :

Object privilege on VIEW is DELETE, INSERT, REFERENCES, SELECT and UPDATE.

Incorrect answer :

A Object privilege on VIEW is DELETE, INSERT, REFERENCES, SELECT and UPDATE

B Object privilege on VIEW is DELETE, INSERT, REFERENCES, SELECT and UPDATE

C Object privilege on VIEW is DELETE, INSERT, REFERENCES, SELECT and UPDATE
Refer : Introduction to Oracle9i : SQL, Oracle University Study Guide, 13-12

QUESTION 178:

Which is an iSQL*Plus command?

- A. INSERT
- B. UPDATE
- C. SELECT
- D. DESCRIBE
- E. DELETE
- F. RENAME

Answer: D

Explanation :

The only SQL*Plus command in this list : DESCRIBE. It cannot be used as SQL command. This command returns a description of tablename, including all columns in that table, the datatype for each column and an indication of whether the column permits storage of NULL values.

Incorrect answer:

- A INSERT is not a SQL*PLUS command
- B UPDATE is not a SQL*PLUS command
- C SELECT is not a SQL*PLUS command
- E DELETE is not a SQL*PLUS command
- F RENAME is not a SQL*PLUS command

Refer : Introduction to Oracle9i : SQL, Oracle University Study Guide, 7

QUESTION 179:

Evaluate these two SQL statements:

SELECT last_name, salary, hire_date FROM EMPLOYEES ORDER BY salary DESC;

SELECT last_name, salary, hire_date FROM EMPLOYEES ORDER BY 2 DESC;

What is true about them?

- A. The two statements produce identical results.
- B. The second statement returns a syntax error.
- C. There is no need to specify DESC because the results are sorted in descending order by default.
- D. The two statements can be made to produce identical results by adding a column alias for the salary column in the second SQL statement.

Answer: A

Explanation :

the two statements produce identical results as ORDER BY 2 will take the second column as sorting column.

Incorrect answer :

B there is no syntax error

C result are sorted in ascending order by default

D ORDER BY 2 will take the second column as sorting column.

Refer : Introduction to Oracle9i : SQL, Oracle University Study Guide, 2-22

QUESTION 180:

Examine the structure of the EMPLOYEES and NEW_EMPLOYEES tables:

EMPLOYEES

EMPLOYEE_ID NUMBER Primary Key

FIRST_NAME VARCHAR2(25)

LAST_NAME VARCHAR2(25)

HIRE_DATE DATE

NEW_EMPLOYEES

EMPLOYEE_ID NUMBER Primary Key

NAME VARCHAR2(60)

Which MERGE statement is valid?

A. MERGE INTO new_employees c

USING employees e

ON (c.employee_id = e.employee_id)

WHEN MATCHED THEN

UPDATE SET

C.name = e.first_name || ',' || e.last_name

WHEN NOT MATCHED THEN

INSERT

value

S(e.employee_id, e.first_name ||,

||e.last _ name);

B. MERGE new_employees c

USING employees e

ON (c.employee_id = e.employee_id)

WHEN EXISTS THEN

UPDATE SET

C.name = e.first_name || ',' || e.last_name

WHEN NOT MATCHED THEN INSERT

valueS(e.employee_id, e.first_name ||,

||e.last _ name);

C. MERGE INTO new_employees c USING employees e

ON (c.employee_id = e.employee_id)

WHEN EXISTS THEN

UPDATE SET

C.name = e.first_name || ',' || e.last_name

WHEN NOT MATCHED THEN

INSERT

```
value
S(e.employee_id, e.first_name ||',
||e.last _ name);
D. MERGE new_employees c
FROM employees e ON (c.employee_id = e.employee_id)
WHEN MATCHED THEN
UPDATE SET
c.name = e.first_name ||',|| e.last_name
WHEN NOT MATCHED THEN
INSERT INTO
new_employees values(e.employee_id, e.first_name ||',
||e.last _ name);
```

Answer: A

Explanation :

this is the correct MERGE statement syntax

Incorrect answer :

B it should MERGE INTO table_name

C it should be WHEN MATCHED THEN

D it should MERGE INTO table_name

Refer : Introduction to Oracle9i : SQL, Oracle University Study Guide, 8-29

QUESTION 181:

Which SQL statement displays the date March 19, 2001 in a format that appears as "Nineteenth of March 2001 12:00:00 AM"?

A. SELECT

```
TO_CHAR(TO_DATE('19-Mar-2001', 'DD-Mon-YYYY'), 'fmDdspth
"of" Month YYYY fmHH:MI:SS AM') NEW_DATE
FROM dual;
```

B. SELECT

```
TO_CHAR(TO_DATE('19-Mar-2001', 'DD-Mon-YYYY'), 'Ddspth
"of" Month YYYY fmHH:MI:SS AM') NEW_DATE
HH:MI:SS AM') NEW _ DATE FROM dual;
```

C. SELECT

```
TO_CHAR(TO_DATE('19-Mar-2001', 'DD-Mon-YYYY'), 'fmDdspth "of" Month YYYY
NEW _ DATE FROM dual;
```

D. SELECT

```
TO_CHAR(TO_DATE('19-Mar-2001', 'DD-Mon-YYYY'), 'fmDdspth "of" Month
YYYYfmtHH:HI:SS AM')NEW_DATE FROM dual;
```

Answer: A

QUESTION 182:

Which one is a system privilege?

- A. SELECT
- B. DELETE
- C. EXECUTE
- D. ALTER TABLE
- E. CREATE TABLE

Answer: E

QUESTION 183:

You need to perform these tasks:

1. Create and assign a MANAGER role to Blake and Clark
2. Grant CREATE TABLE and CREATE VIEW privileges to Blake and Clark

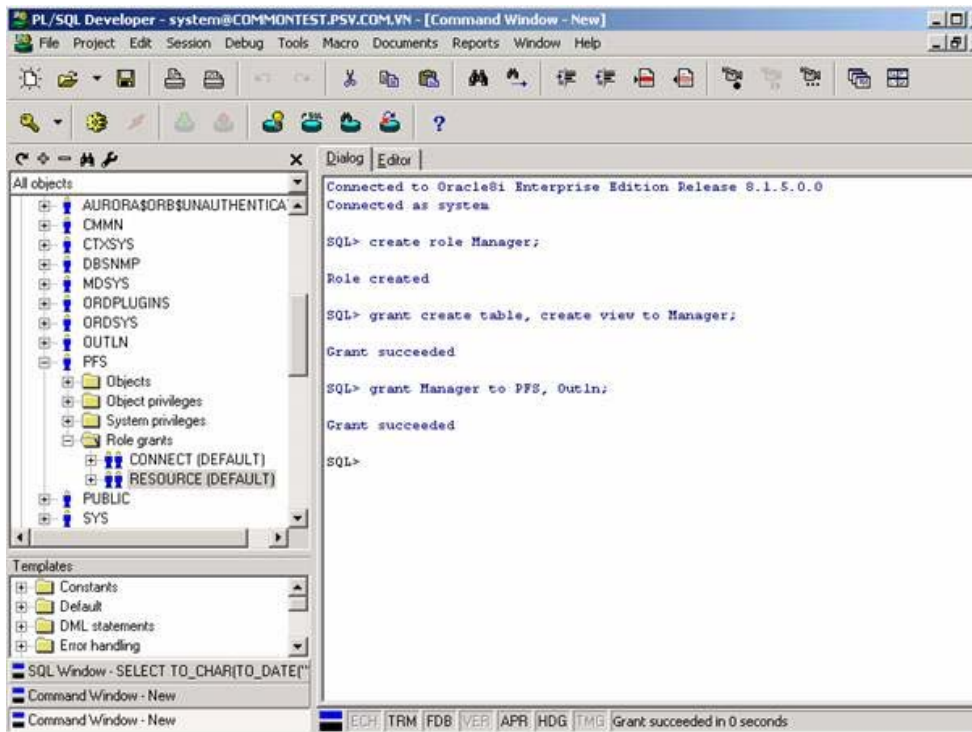
Which set of SQL statements achieves the desired results?

- A. CREATE ROLE manager;
GRANT create table, create view
TO manager;
GRANT manager TO BLACK, CLARK;
 - B. CREATE ROLE manager;
GRANT create table, create view
TO manager;
GRANT manager ROLE TO BLACK, CLARK;
 - C. GRANT manager ROLE TO BLACK, CLARK;
GRANT create table, create view
TO BLACK CLARK;
- ***MISSING***

Answer: A

Explanation:

Result of commands:



QUESTION 184:

Which two are true about aggregate functions? (Choose two.)

- A. You can use aggregate functions in any clause of a SELECT statement.
- B. You can use aggregate functions only in the column list of the select clause and in the WHERE clause of a SELECT statement.
- C. You can mix single row columns with aggregate functions in the column list of a SELECT statement by grouping on the single row columns.
- D. You can pass column names, expressions, constants, or functions as parameter to an aggregate function.
- E. You can use aggregate functions on a table, only by grouping the whole table as one single group.
- F. You cannot group the rows of a table by more than one column while using aggregate functions.

Answer: A, D

QUESTION 185:

Which statement correctly describes SQL and /SQL*Plus?

- A. Both SQL and /SQL*plus allow manipulation of values in the database.
- B. /SQL* Plus recognizes SQL statement and sends them to the server; SQL is the Oracle proprietary interface for executing SQL statements.

C. /SQL* Plus language for communicating with the Oracle server to access data; SQL recognizes SQL statements and sends them to the server.

D. /SQL manipulates data and table definition in the database; /SQL* Plus does not allow manipulation of values in the database.

Answer: A

QUESTION 186:

Examine the structure of the STUDENTS table:

STUDENT_ID NUMBER NOT NULL, Primary Key

STUDENT_NAME VARCHAR2(30)

COURSE_ID VARCHAR2(10) NOT NULL

MARKS NUMBER

START_DATE DATE

FINISH_DATE DATE

You need to create a report of the 10 students who achieved the highest ranking in the course INT SQL and who completed the course in the year 1999.

Which SQL statement accomplishes this task?

A. SELECT student_id, marks, ROWNUM "Rank"

FROM students

WHERE ROWNUM <= 10

AND finish_date BETWEEN '01-JAN-99' AND '31-DEC-99

AND course_id = 'INT_SQL'

ORDER BY mark DESC;

B. SELECT student_id, marks, ROWID "Rank"

FROM students

WHERE ROWID <= 10

AND finish_date BETWEEN '01-JAN-99' AND '31-DEC-99'

AND course_id = 'INT_SQL'

ORDER BY mark;

C. SELECT student_id, marks, ROWNUM "Rank"

FROM (SELECT student_id, marks

FROM students

WHERE ROWNUM <= 10

AND finish_date BETWEEN '01-JAN-99' AND '31-DEC-

99'

AND course_id = 'INT_SQL'

ORDER BY mark DESC;

D. SELECT student_id, marks, ROWNUM "Rank"

FROM (SELECT student_id, marks

FROM students

WHERE (finish_date BETWEEN '01-JAN-99 AND '31-DEC-99'

AND course_id = 'INT_SQL'

ORDER BY marks DESC)


```
WHERE ROWNUM <= 10;
E. SELECT student id, marks, ROWNUM "Rank"
FROM (SELECT student_id, marks
FROM students
ORDER BY marks)
WHERE ROWNUM <= 10
AND finish date BETWEEN '01-JAN-99' AND '31-DEC-99'
AND course _ id 'INT_SQL';
```

Answer: D

QUESTION 187:

Exhibit

EMPLOYEES

EMPLOYEE_ID	LAST_NAME	DEPARTMENT_ID	MANAGER_ID
100	Getz	10	103
101	Davis	20	104
102	Bill	20	104
103	Davis	30	
104	Bill		103

DEPARTMENTS

DEPARTMENT_ID	DEPARTMENT_NAME
10	Sales
20	Marketing
30	Accounts
40	Administration

Examine the data in the EMPLOYEES and DEPARTMENTS tables.
You want to retrieve all employees' last names, along with their manager's last names and their department names. Which query would you use?

- A. SELECT last_name, manager_id, department_name
FROM employees e
FULL OUTER JOIN department d ON (e.department_id = d.department_id);
- B. SELECT e.last_name, m.last_name, department_name
FROM employees e
LEFT OUTER JOIN employees m on (e.managaer_id = m.employee_id)
LEFT OUTER JOIN department d ON (e.department_id = d.department_id);
- C. SELECT e.last_name, m.last_name, department_name
FROM employees e
RIGHT OUTER JOIN employees m on (e.manager_id = m.employee_id)
FULL OUTER JOIN department d ON (e.department_id = d.department_id);
- D. SELECT e.last_name, m.last_name, department_name
FROM employees e
LEFT OUTER JOIN employees m on (e.manager_id = m.employee_id)
RIGHT OUTER JOIN department d ON (e.department_id = d.department_id);
- E. SELECT e.last_name, m.last_name, department_name
FROM employees e
RIGHT OUTER JOIN employees m on (e.manager_id = m.employee_id)

RIGHT OUTER JOIN departments d ON (e.department_id = d.department_id)
F. SELECT last_name, manager_id, department_name
FROM employees e
JOIN department d ON (e.department_id = d.department_id);

Answer: B

QUESTION 188:

The STUDENT_GRADES table has these columns:

STUDENT_ID NUMBER(12)

SEMESTER_END DATE

GPA NUMBER(4,3)

The registrar has asked for a report on the average grade point average (GPA), sorted from the highest grade point average to each semester, starting from the earliest date.

Which statement accomplish this?

- A. SELECT student_id, semester_end, gpa
FROM student_grades
ORDER BY semesterend DESC, gpa DESC;
- B. SELECT student_id, semester_end, gpa
FROM student_grades
ORDER BY semester_end, gpa ASC
- C. SELECT student_id, semesterend, gpa
FROM student_grades
ORDER BY gpa DESC, semesterend ASC;
- D. SELECT student_id, semesterend, gpa
FROM student_grades
ORDER BY gpa DESC, semesterend DESC;
- E. SELECT student_id, semester_end, gpa
FROM student_grades
ORDER BY gpa DESC, semesterend ASC;
- F. SELECT student_id,semester_end,gpa
FROM studentgrades
ORDER BY semester_end,gpa DESC

Answer: F

QUESTION 189:

Which are /SQL*Plus commands? (Choose all that apply.)

- A. INSERT
- B. UPDATE
- C. SELECT
- D. DESCRIBE

- E. DELETE
- F. RENAME

Answer: A, B, C, D, E

QUESTION 190:

Examine the structure of the EMPLOYEES table:

```
EMPLOYEE_ID NUMBER Primary Key  
FIRST_NAME VARCHAR2(25)  
LAST_NAME VARCHAR2(25)  
HIRE_DATE DATE
```

Which INSERT statement is valid?

- A. INSERT INTO employees (employee_id, first_name, last_name, hire_date) VALUES (1000, 'John', 'smith','01/01/01');
- B. INSERT INTO employees(employee_id, first_name, last_name, hire_date) VALUES (1000, 'John', 'smith','01 january 01');
- C. INSERT INTO employees(employee_id, first_name, last_name, Hire_date) VALUES (1000, 'John', 'smith', To_date ('01/01/01'));
- D. INSERT INTO employees(employee_id, first_name, last_name, hire_date) VALUES (1000, 'John', 'smith','01-Jan-01');

Answer: A

QUESTION 191:

Which two statements about subqueries are true? (Choose two.)

- A. A single row subquery can retrieve data from only one table.
- B. A SQL query statement cannot display data from table B that is referred to in its subquery, unless table B is included in the main query's FROM clause.
- C. A SQL query statement can display data from table B that is referred to in its subquery, without including B in its own FROM clause.
- D. A single row subquery can retrieve data from more than one table.
- E. A single row subquery cannot be used in a condition where the LIKE operator is used for comparison.
- F. A multiple-row subquery cannot be used in an INSERT statement to insert multiple rows at a time.

Answer: D, F

QUESTION 192:

User Mary has a view called EMP_DEPT_LOC_VU that was created based on the EMPLOYEES, DEPARTMENTS, and LOCATIONS tables. She has the privilege to create a public synonym, and would like to create a synonym for this view that can be used by all users of the database.

Which SQL statement can Mary use to accomplish that task?

- A. CREATE PUBLIC SYNONYM EDL_VU
ON emp_dept_loc_vu
- B. CREATE PUBLIC SYNONYM EDL:VU
FOR mary (emp_dept_loc_vu);
- C. CREATE PUBLIC SYNONYM EDL_VU
FOR emp_dept_loc_vu;
- D. CREATE SYNONYM EDL_VU
ON emp_dept_loc_vu
FOR EACH USER;
- E. CREATE SYNONYM EDL_VU
FOR EACH USER
ON emp_dept_loc_vu
- F. CREATE PUBLIC SYNONYM EDL_VU
ON emp_dept_loc_vu
FOR ALL USERS;

Answer: C

Explanation:

The general syntax to create a synonym is:

CREATE [PUBLIC] SYNONYM synonym FOR object;

QUESTION 193:

Exhibit

EMP_ID	DEPT_ID	COMMISSION
1	10	500
2	20	1000
3	10	
4	10	600
5	30	800
6	30	200
7	10	
8	20	300

The COMMISSION column shows the monthly commission earned by the employee.

Which two tasks would require subqueries or joins in order to be performed in a single step? (Choose two.)

- A. listing the employees who earn the same amount of commission as employee 3
- B. finding the total commission earned by the employees in department 10
- C. finding the number of employees who earn a commission that is higher than the average commission of the company
- D. listing the departments whose average commission is more than 600
- E. listing the employees who do not earn commission and who are working for department 20 in descending

order of the employee ID

F. listing the employees whose annual commission is more than 6000

Answer: A, C

QUESTION 194:

Which statement accomplish this?

- A. CREATE TABLE orders (
order_id NUMBER (10),
customer_id NUMBER (8),
order_status VARCHAR2 (10),
date_ordered DATE = SYSDATE);
- B. CREATE TABLE orders (
order_id NUMBER (10),
customer_id NUMBER (8),
order_status VARCHAR2 (10),
date_ordered DATE DEFAULT SYSDATE);
- C. CREATE OR REPLACE TABLE orders (
order_id NUMBER (10),
customer_id NUMBER (8),
order_status VARCHAR2 (10),
date_ordered DATE DEFAULT SYSDATE);
- D. CREATE OR REPLACE TABLE orders (
order_id NUMBER (10),
customer_id NUMBER (8),
order_status NUMBER (10),
date_ordered DATE = SYSDATE);
- E. CREATE TABLE orders (
order_id NUMBER (10),
customer_id NUMBER (8),
order_status NUMBER (10),
date_ordered DATE = SYSDATE);
- F. CREATE TABLE orders (
order_id NUMBER (10),
customer_id NUMBER (8),
order_status NUMBER (10),
date_ordered DATE DEFAULT SYSDATE);

Answer: B

QUESTION 195:

Examine the statement:

Create synonym emp for hr. employees;

What happens when you issue the statement?

- A. An error is generated.
- B. You will have two identical tables in the HR schema with different names.
- C. You create a table called employees in the HR schema based on you EMP table.
- D. You create an alternative name for the employees table in the HR schema in your own schema.

Answer: D

QUESTION 196:

Examine the structure of the EMPLOYEES table:

EMPLOYEE_ID NUMBER Primary Key

FIRST_NAME VARCHAR2 (25)

LAST_NAME VARCHAR2 (25)

HIRE_DATE DATE

Which UPDATE statement is valid?

- A. UPDATE employees
SET first_name = 'John'
SET last_name = 'Smith'
WHERE employee_id = 180;
- B. UPDATE employees
SET first_name = 'John',
SET last_name = 'Smoth'
WHERE employee_id = 180;
- C. UPDATE employee
SET first_name = 'John'
AND last_name = 'Smith'
WHERE employee_id = 180;
- D. UPDATE employee
SET first_name = 'John', last_name = 'Smith'
WHERE employee_id = 180;

Answer: D

QUESTION 197:

What is true about sequences?

- A. The start value of the sequence is always 1.
- B. A sequence always increments by 1.
- C. The minimum value of an ascending sequence defaults to 1.
- D. The maximum value of descending sequence defaults to 1.

Answer: C

Explanation: The Start values of a Sequence defaults to 1 but another value may be specified with the START WITH clause

QUESTION 198:

The STUDENT_GRADES table has these columns

STUDENT_ID NUMBER(12)

SEMESTER_END DATE

GPA NUMBER(4,3)

Which statement finds students who have a grade point average (GPA) greater than 3.0 for the calendar year 2001?

- A. SELECT student_id, gpa
FROM student_grades
WHERE semester_end BETWEEN '01-JAN-2001' AND '31-DEC-2001'
OR gpa > 3.;
- B. SELECT student_id, gpa
FROM student_grades
WHERE semester_end BETWEEN '01-JAN-2001' AND '31-DEC-2001'
AND gpa gt 3.0;
- C. SELECT student_id, gpa
FROM student_grades
WHERE semester_end BETWEEN '01-JAN-2001' AND '31-DEC-2001'
AND gpa > 3.0;
- D. SELECT student_id, gpa
FROM student_grades
WHERE semester_end BETWEEN '01-JAN-2001' AND '31-DEC-2001'
AND gpa > 3.0;
- E. SELECT student_id, gpa
FROM student_grades
WHERE semester_end > '01-JAN-2001' OR semester_end < '31-DEC-2001'
AND gpa >=s 3.0;

Answer: C

QUESTION 199:

Exhibit
ORDERS

ORD_ID	ORD_DATE	CUST_ID	ORD_TOTAL
100	12-JAB-2000	15	10000
101	09-MAR-2000	40	8000

102	09-MAR-2000	35	12500
103	15-MAR-2000	15	12500
104	25-JUN-2000	15	6000
105	18-JUL-2000	20	5000
106	18-JUL-2000	35	7000
108	04-AUG-2000	10	8000

CUSTOMERS

CUST_ID	CUST_NAME	CITY
10	Smith	Los Angeles
15	Bob	San Francisco
20	Martin	Chicago
25	Mary	New York
30	Rina	Chicago
35	Smith	New York
40	Linda	New York

Evaluate this SQL statement:

```
SELECT cust_id, ord_total
FROM orders
WHERE ord_total > ANY (SELECT ord_total
FROM orders
WHERE cust_id IN (SELECT cust_id
FROM customers
WHERE city LIKE
'New York'));
```

What is the result when the above query is executed?

A.

CUST_ID	ORD_TOTAL
15	10000
40	8000
35	12500
15	12500
10	8000

B.

CUST_ID	ORD_TOTAL
---------	-----------

15	10000
35	12500
15	12000

C.

CUST_ID	ORD_TOTAL
15	10000
40	8000
15	12000
15	6000
20	5000
35	7000
20	6500
10	8000

D.

CUST_ID	ORD_TOTAL
15	6000
20	5000
20	6500

E. The query returns no rows.

F. The query fails because ANY is not a valid operator with a subquery.

Answer: A

QUESTION 200:

What is true regarding subqueries?

- A. The inner query always sorts the results of the outer query
- B. The outer query always sorts the results of the inner query
- C. The outer query must return a value to the outer query
- D. The inner query returns a value to the outer query
- E. The inner query must always return a value or the outer query will give an error

Answer: A

Explanation: The inner query returns a value to the outer query. If the inner query does not return a value, the outer query does not return a result

QUESTION 201:

For which action can you use the TO_DATE function?

- A. Convert any date literal to a date
- B. Convert any numeric literal to a date
- C. Convert any character literal to a date
- D. Convert any date to a character literal
- E. Format '10-JAN-99' to 'January 10 1999'

Answer: C

QUESTION 202:

EXHIBIT, Emp Table

EMP_ID	DEPT_ID	COMMISSION
1	10	500
2	20	1000
3	10	
4	10	600
5	30	800
6	30	200
7	10	
8	20	300

Exhibit A

EMP_ID	DEPT_ID	COMMISSION
3	10	
7	10	

Exhibit B

EMP_ID	DEPT_ID	COMMISSION
7	10	

Examine the data from the EMP table.

Evaluate this SQL statement:

```
SELECT *  
FROM emp  
WHERE emp_id = 3);  
WHERE commission = (SELECT commission  
FROM emp
```

What is the result when the query is executed?

- A. Exhibit A
- B. Exhibit B
- C. The query returns no rows
- D. The query fails because the outer query is retrieving more than one column
- E. The query fails because both the inner and outer queries are retrieving data from the same table.

Answer: C

QUESTION 203:

Which three statements about subqueries are true? (Choose three.)

- A. A main query can have more than one subquery.
- B. A subquery can have more than one main query.
- C. The subquery and main query must retrieve data from the same table.
- D. The subquery and main query can retrieve data from different tables.
- E. Only one column or expression can be compared between the subquery and main query.
- F. Multiple columns or expression can be compared between the subquery and main query.

Answer: A, D, E

Explanation:

D not C: A subquery does not have to retrieve data from the same table