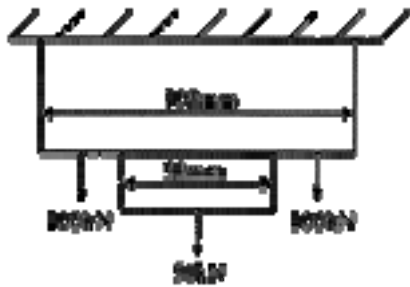


CIVIL ENGINEERING

ONE MARKS QUESTIONS

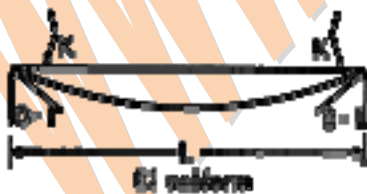
1. A bar of varying square cross-section is loaded symmetrically as shown in the figure. Loads shown are placed on one of the axes of symmetry of cross-section. Ignoring self weight the maximum tensile stress in N/mm^2 anywhere is



- (a.) 16.0
 (b.) 20.0
 (c.) 25.0
 (d.) 30.0
2. A curved member with a straight vertical leg is carrying a vertical load at Z, as shown in the figure. The stress resultants in the XY segment are



- (a.) bending moment, shear force and axial force
 (b.) bending moment and axial force only
 (c.) bending moment and shear force only
 (d.) axial force Only
3. The stiffness K of a beam deflecting in a symmetric mode, as shown in the figure, is



- (a.) $\frac{EI}{L}$

(b.) $\frac{2EI}{L}$

(c.) $\frac{4EI}{L}$

(d.) $\frac{6EI}{L}$

4. Muller Breslau principle in structural analysis is used for
- drawing influence line diagram for any force function
 - writing virtual work equation
 - superposition of load effects
 - none of these
5. The effective length of a column in a reinforced concrete building frame, as per IS:456-2000, is independent of the
- frame type i.e., braced (no sway) or un-braced (with sway)
 - span of the beam
 - height of the column
 - loads acting on the frame
6. Maximum strains in an extreme fibre in concrete and in the tension reinforcement (Fe-415 grade and $E_s = 200 \text{ kN/mm}^2$) in a balanced section at limit state of flexure are respectively
- 0.0035 and 0.0038
 - 0.002 and 0.0018
 - 0.0035 and 0.0041
 - 0.002 and 0.0031
7. The working stress method of design specifies the value of modular ratio, $m = 280 (3\sigma_{cbc})$, Where σ_{cbc} is the allowable stress in bending compression in concrete. To what extent does the above value of 'm' make any allowance for the creep of concrete?
- No compensation
 - Full compensation
 - Partial compensation
 - The two are unrelated
8. In the design of lacing system for a built-up steel column, the maximum allowable slenderness ratio of a lacing bar is
- 120
 - 145
 - 180
 - 250
9. Which of the following elements of a pitched roof industrial steel building primarily resists lateral load parallel to the ridge?

- (a.) bracings
(b.) purlins
(c.) truss
(d.) columns
10. A masonry dam is founded on pervious sand having porosity equal to 45% and specific gravity of sand particles is 2.65. For a desired factor of safety of 3 against sand boiling, the maximum permissible upward gradient will be
(a.) 0.225
(b.) 0.302
(c.) 1.0
(d.) none of these
11. Water is pumped from a well tapping an unconfined aquifer at a certain discharge rate and the steady state drawdown (X) in an observation well is monitored. Subsequently, the pumping discharge is doubled and the steady state drawdown in the same observation well is found to be more than double (i.e., more than 2X). This disproportionate drawdown is caused by
(a.) Well losses
(b.) Decrease in the saturated thickness of the aquifer
(c.) nonlinear flow
(d.) delayed gravity yield
12. A double draining clay layer, 6m thick, settles by 30mm in three years under the influence of certain loads. Its final consolidation settlement has been estimated to be 120mm. If a thin layer of sand having negligible thickness is introduced at a depth of 1.5m below the top surface, the final consolidation settlement of clay layer will be
(a.) 60mm
(b.) 120mm
(c.) 240mm
(d.) none of these
13. A 25kN point load acts on the surface of an infinite elastic medium. The vertical pressure intensity in kN/m^2 at a point 6.0m below and 4.0m away from the load will be
(a.) 132
(b.) 13.2
(c.) 1.32
(d.) 0.132
14. A granular soil possesses saturated density of 20kN/m^3 . Its effective angle of internal friction is 35 degrees. If the desired factor of safety is 1.5, the safe angle of slope for this soil, when seepage occurs at and parallel to the slope surface, will be
(a.) 25°
(b.) 23°
(c.) 20°

- (d.) 13°
15. In a plate load test conducted on cohesionless soil, a 600 mm square test plate settles by 15 mm under a load intensity of 0.2 N/mm^2 . All conditions remaining the same, settlement of a 1 m square footing will be
- (a.) less than 15 mm
(b.) greater than 25 mm
(c.) 15.60 mm
(d.) 20.50 mm
16. For a two-dimensional irrotational flow, the velocity potential is defined as $\phi = \ln(x^2 + y^2)$. Which of the following is a possible stream function ψ for this flow?
- (a.) $\frac{1}{2} \tan^{-1}(y/x)$
(b.) $\tan^{-1}(y/x)$
(c.) $2 \tan^{-1}(y/x)$
(d.) $2 \tan^{-1}(x/y)$
17. A flat plate is kept in an infinite fluid medium. The fluid has a uniform free-stream velocity parallel to the plate. For the laminar boundary layer formed on the plate, pick the correct option matching List-I and List-II.
- List-I
- P. Boundary layer thickness
Q. Shear stress at the plate
R. Pressure gradient along the plate
- List-II
1. Decreases in the flow direction
2. Increases in the flow direction
3. Remains unchanged
- Codes;
- | | P | Q | R |
|------|---|---|---|
| (a.) | 1 | 2 | 3 |
| (b.) | 2 | 2 | 2 |
| (c.) | 1 | 1 | 2 |
| (d.) | 2 | 1 | 3 |
18. A laboratory model of a river is built to a geometric scale of 1:100. The fluid used in the model is oil of mass density 900 kg/m^3 . The highest flood in the river is $10,000^3/\text{s}$. The corresponding discharge in the model shall be
- (a.) $0.095 \text{ m}^3/\text{s}$
(b.) $0.100 \text{ m}^3/\text{s}$

- (c.) $0.105 \text{ m}^3/\text{s}$
(d.) $10.5 \text{ m}^3/\text{s}$
19. The results of analysis of a raw water sample are given below:
Turbidity : 5 mg/l pH : 7.4
Fluorides: 2.5 mg/l Total Hardness: 300 mg/l
Iron : 3.0 mg/l MPN : 50 per 100ml
From the data given above, it can be inferred that water needs removal of
- (a.) turbidity followed by disinfection
(b.) fluorides and hardness
(c.) iron, followed by disinfection
(d.) fluorides, hardness and iron followed by disinfection
20. Zero hardness of water is achieved by
- (a.) lime soda process
(b.) excess lime treatment
(c.) ion exchange treatment
(d.) excess alum and lime treatment
21. Which of the following sewage treatment methods has inherent problems of odour, ponding and fly nuisance?
- (a.) UASB system
(b.) Activated sludge process
(c.) Trickling filters
(d.) Stabilization ponds
22. From amongst the following sewage treatment options, largest land requirements for a given discharge will be needed for
- (a.) trickling filter
(b.) anaerobic pond
(c.) oxidation ditch
(d.) oxidation pond
23. The vertical hydraulic conductivity of the top soil at certain stage is 0.2 cm/hr . A storm of intensity 0.5 cm/hr occurs over the soil for an indefinite period. Assuming the surface drainage to be adequate, the infiltration rate after the storm has lasted for a very long time, shall be
- (a.) smaller than 0.2 cm/hr
(b.) 0.2 cm/hr
(c.) between 0.2 and 0.5 cm/hr
(d.) 0.5 cm/hr
24. The total irrigation depth of water, required by a certain crop in its entire growing period (150 days), is 25.92 cm . The culturable command area for a distributary channel is 100,000 hectares. The distributary channel shall be designed for a discharge

- (a.) less than 2 cumecs
(b.) 2 cumecs
(c.) 20 cumecs
(d.) more than 20 cumecs
25. The moisture content of soil in the root zone of an agricultural crop at certain stage is found to be 0.05. The field capacity of the soil is 0.15. The root zone depth is 1.1m. The consumptive use of crop at this stage is 2.5mm/day and there is no precipitation during this period.
Irrigation efficiency is 65%. It is intended to raise the moisture content to the field capacity in 8 days through irrigation. The necessary depth of irrigation is
(a.) 115 mm
(b.) 169 mm
(c.) 200 mm
(d.) 225 mm
26. Temperature stresses in concrete pavements may cause the slab to crack. If a slab cools uniformly then the crack will develop at which of the following locations of the slab?
(a.) At centre
(b.) Near edges
(c.) corners
(d.) Near edges and at corners
27. The speed and delay studies on a defined section of highway are conducted by
(a.) radar gun
(b.) traffic counters
(c.) moving car method
(d.) enoscope
28. Given Matrix $[A] = \begin{bmatrix} 4 & 2 & 1 & 3 \\ 6 & 3 & 4 & 7 \\ 2 & 1 & 0 & 1 \end{bmatrix}$, the rank of the matrix is
(a.) 4
(b.) 3
(c.) 2
(d.) 1
29. A box contains 10 screws, 3 of which are defective. Two screws are drawn at random with replacement. The probability that none of the two screws is defective will be
(a.) 100%
(b.) 50%
(c.) 49%
(d.) none of these

30. If P, Q and R are three points having coordinates (3,-2,-1), (1,3,4), (2,1,-2) in XYZ space, then the distance from point P to plane OQR (O being the origin of the coordinate system) is given by
- (a.) 3
(b.) 5
(c.) 7
(d.) 9

TWO MARKS QUESTIONS

31. The state of two dimensional stresses acting on a concrete lamina consists of a direct tensile stress, $\sigma_x = 1.5 \text{ N/mm}^2$, and shear stress, $\tau = 1.20 \text{ N/mm}^2$, which cause cracking of concrete. Then the tensile strength of the concrete in N/mm^2 is
- (a.) 1.50
(b.) 2.08
(c.) 2.17
(d.) 2.29
32. A "H" shaped frame of uniform flexural rigidity EI is loaded as shown in the figure. The relative outward displacement between points K and O is



- (a.) $\frac{RLh^2}{EI}$
(b.) $\frac{RL^2h}{EI}$
(c.) $\frac{RLh^2}{3EI}$
(d.) $\frac{RL^2h}{3EI}$
33. A simply supported beam of uniform rectangular cross-section of width b and depth h is subjected to linear temperature gradient, 0° at the top and T° at the bottom, as shown in the figure. The coefficient of linear expansion of the beam material is α . The resulting vertical deflection at the mid-span of the beam is



- (a.) $\frac{\alpha T h^2}{8L}$ upward
- (b.) $\frac{\alpha T h^2}{8h}$ upward
- (c.) $\frac{\alpha T h^2}{8L}$ downward
- (d.) $\frac{\alpha T h^2}{8h}$ downward

34. List-I shows different loads acting on a beam and List-II shows different bending moment distributions. Match the load with the corresponding bending moment diagram.

List-I

P.



Q.



R.



S.

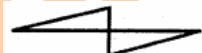


List-II

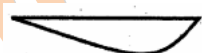
1.



2.



3.



4.



5.



Codes:

	P	Q	R	S
(a.)	4	2	1	3
(b.)	5	4	1	3
(c.)	2	5	3	1
(d.)	2	4	1	3

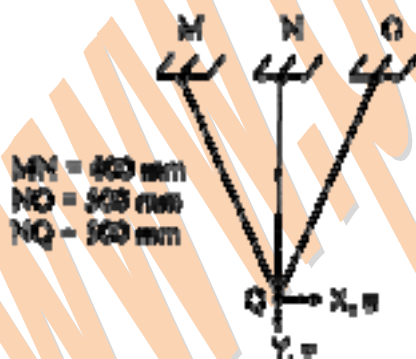
35. A long structural column (length = L) with both ends hinged is acted upon by an axial compressive load, P . The differential equation governing the bending of column is given by:

$$EI \frac{d^2 y}{dx^2} - Py$$

where y is the structural lateral deflection and EI is the flexural rigidity. The first critical load on column responsible for its

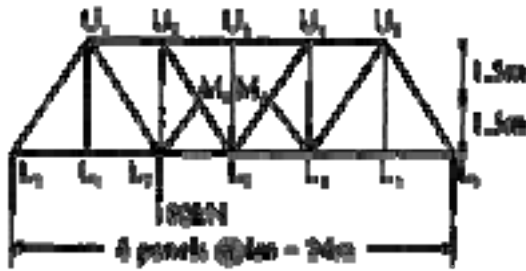
buckling is given by

- (a.) $\pi^2 EI / L^2$
 (b.) $\sqrt{2}\pi^2 EI / L^2$
 (c.) $2\pi^2 EI / L^2$
 (d.) $4\pi^2 EI / L^2$
36. In a redundant joint model, three bar members are pin connected at Q as shown in the figure. Under some load placed at Q , the elongation of the members MQ and OQ are found to be 48mm and 35mm respectively. Then the horizontal displacement ' u ' and the vertical displacement ' v ' of the node Q , in mm, will be respectively,



- (a.) -6.64 and 56.14
 (b.) 6.64 and 56.14
 (c.) 0.0 and 59.41
 (d.) 59.41 and 0.0

37. A truss, as shown in the figure, is carrying 180 kN load at node L_2 . The force in the diagonal member M_2U_4 will be



- (a.) 100 kN tension
 (b.) 100 kN compression
 (c.) 80 kN tension
 (d.) 80 kN compression

Data for Q.38 to Q.39 are given below. Solve the problems and choose the correct answers.

A beam PQRS is 18 m long and is simply supported at points Q and R 10m apart. Overhangs PQ and RS are 3m and 5m respectively. A train of two point loads of 150 kN and 100 kN, 5m apart, crosses this beam from left to right with 100 kN load leading.

38. The maximum sagging moment under the 150 kN load anywhere is
- (a.) 500kN-m
 (b.) 450kN-m
 (c.) 400kN-m
 (d.) 375kN-m
39. During the passage of the loads, the maximum and the minimum reactions at support R, in kN, are respectively
- (a.) 300 and -30
 (b.) 300 and -25
 (c.) 225 and -30
 (d.) 225 and -25
40. The maximum hogging moment in the beam anywhere is
- (a.) 300kN-m
 (b.) 450kN-m
 (c.) 500kN-m
 (d.) 750kN-m
41. List-I contains some properties of concrete/cement and List-II contains list of some tests on concrete/cement. Match the property with the corresponding test.

List I

- P. Workability of concrete
- Q. Direct tensile strength of concrete
- R. Bond between concrete and steel
- S. Fineness of cement

List-II

1. Cylinder splitting test
2. Vee-Bee test
3. Surface area test
4. Fineness modulus test
5. Pull out test

Codes:

	P	Q	R	S
(a.)	2	1	5	3
(b.)	4	5	1	3
(c.)	2	1	5	4
(d.)	2	5	1	4

42. Top ring beam of an Intze tank carries a hoop tension of 120kN. The beam cross-section is 250mm wide and 400mm deep and it is reinforced with 4 bars of 20mm diameter of Fe-415 grade. Modular ratio of the concrete is 10. The tensile stress in N/mm^2 in the concrete is
- (a.) 1.02
 - (b.) 1.07
 - (c.) 1.20
 - (d.) 1.32
43. A concrete column carries an axial load of 450 kN and a bending moment of 60 kN-m at its base. An isolated footing of size 2m x 3m side along the plane of the bending moment, is provided under the column. Centres of gravity of column and footing coincide. The net maximum and the minimum pressures in kN/m^2 on soil under the footing are respectively,
- (a.) 95 and 55
 - (b.) 95 and 75
 - (c.) 75 and 55
 - (d.) 75 and 75

Data for Q.44 & Q.45 are given below. Solve the problems and choose correct answers.

A reinforced concrete beam, size 200mm wide and 300mm deep overall is simply supported over a span of 3m. It is subjected to two point loads P of equal magnitude placed at middle third points. The two loads are gradually increased simultaneously. Beam is reinforced with 2 HYSD bars of 16mm diameter placed at an effective cover of 40mm on bottom face and nominal shear reinforcement. The characteristic compressive strength and the bending tensile strength of the concrete are 20.0 N/mm^2 and 2.2 N/mm^2 respectively.

44. Ignoring the presence of tension reinforcement, the value of load P in kN when the first flexure crack will develop in the beam is
- (a.) 4.5
(b.) 5.0
(c.) 6.6
(d.) 7.5
45. The theoretical failure load of the beam for attainment of limit state of collapse in flexure is
- (a.) 23.7 kN
(b.) 25.6 kN
(c.) 28.7 kN
(d.) 31.6 kN
46. List-I contains some elements in design of a simply supported plate girder and List-II gives some qualitative locations on the girder. Match the items of two lists as per good design practice and relevant codal provisions.

List-I

- P. Flange splice
Q. Web splice
R. Bearings stiffeners
S. Horizontal stiffeners

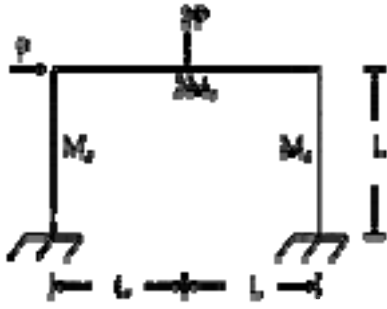
List-II

1. At supports (minimum)
2. Away from centre of span
3. Away from support
4. In the middle of span
5. Longitudinally somewhere in the compression flange

Codes :

- | | P | Q | R | S |
|------|---|---|---|---|
| (a.) | 2 | 3 | 1 | 5 |
| (b.) | 4 | 2 | 1 | 3 |
| (c.) | 3 | 4 | 2 | 1 |
| (d.) | 1 | 5 | 2 | 3 |

47. A steel portal frame has dimensions, plastic moment capacities and applied loads as shown in the figure. The vertical load is always twice of the horizontal load. The collapse load P required for the development of a beam mechanism is

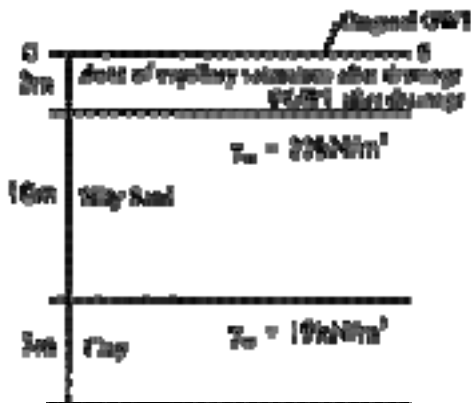


- (a.) $\frac{3M_p}{L}$
- (b.) $\frac{4M_p}{L}$
- (c.) $\frac{6M_p}{L}$
- (d.) $\frac{8M_p}{L}$

Data for Q48 & Q.49 are given below. Solve the problems and choose correct answers.

A truss tie consisting of 2 1SA 75 × 75 × 8mm carries a pull of 150 kN. At ends the two angles are connected, one each on either side of a 10mm thick gusset plate, by 18 mm diameter rivets arranged in one row. The allowable stresses in rivet are $f_s = 90.0 \text{ N/mm}^2$ and $f_{br} = 250 \text{ N/mm}^2$.

48. Maximum tensile stress in the tie in N/mm^2 is
- (a.) 93.6
- (b.) 87.5
- (c.) 77.2
- (d.) 66.0
49. Minimum number of rivets required at each end is
- (a.) 2
- (b.) 3
- (c.) 4
- (d.) 5
50. For the soil strata shown in figure, the water table is lowered by drainage by 2m and if the top 2m thick silty sand stratum remains saturated by capillary action even after lowering of water table, the increase in effective vertical pressure in kPa at mid-height of clay layer will be

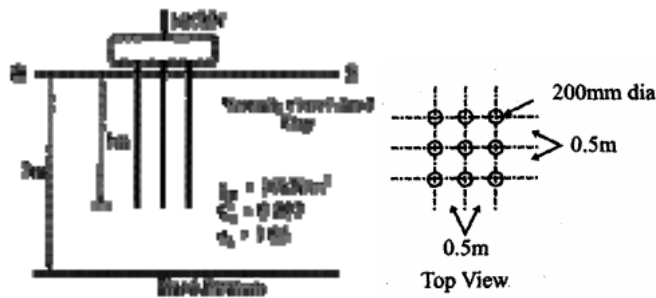


- (a.) 0.2
(b.) 2
(c.) 20
(d.) 200

51. At a reclamation site for which the soil strata is shown in figure, a 3m thick layer of a fill material is to be laid instantaneously on the top surface. If the coefficient of volume compressibility, m for clay is $2.2 \times 10^{-4} \text{ m}^2/\text{kN}$, the consolidation settlement of the clay layer due to placing of fill material will be



- (a.) 69.5 mm
(b.) 139 mm
(c.) 228 mm
(d.) 278 mm
52. A braced cut, 5m wide and 7.5m deep is proposed in a cohesionless soil deposit having effective cohesion $c' = 0$ and effective friction angle, $\phi' = 36^\circ$. The first row of struts is to be installed at a depth of 0.5m below ground surface and spacing between the struts should be 1.5m. If the horizontal spacing of struts is 3m and unit weight of the deposit is 20 kN/m^3 , the maximum strut load will be
- (a.) 70.87 kN
(b.) 98.72 kN
(c.) 113.90 kN
(d.) 151.86 kN
53. For the (3×3) pile group shown in the figure, the settlement of pile group, on a normally consolidated clay stratum having properties as shown in the figure, will be



54. Compaction of an embankment is carried out in 500mm thick layers. The rammer used for compaction has a foot area of 0.05m^2 and the energy imparted in every drop of rammer is 400N-m. Assuming 50% more energy in each pass over the compacted area due to overlap, the number of passes required to develop compactive energy equivalent to Indian Standard light compaction for each layer would be

- (a.) 10
(b.) 16
(c.) 20
(d.) 26

55. Match the List-I (Boring methods) with List-II (Field conditions) and select the correct answer using the codes given below the lists:

List-I

P. Auger Boring

Q. Wash Boring

R. Percussion Drilling

S. Rotary Drilling

List-II

1. Below water table in all soil types except hard soils and rocks
2. Large diameter boreholes over 150 mm in size
3. Explorations for shallow foundations and highways
4. Bouldery and gravelly strata

Codes :

- | | P | Q | R | S |
|------|---|---|---|---|
| (a.) | 3 | 1 | 4 | 2 |
| (b.) | 1 | 2 | 4 | 3 |
| (c.) | 2 | 3 | 4 | 1 |
| (d.) | 3 | 1 | 2 | 4 |

56. Match the items of List-I with List-II and select the correct answer using the codes give below the lists:

List-I

P. Modulus of subgrade reaction

- Q. Relative density and strength
R. Skin friction and point bearing resistance
S. Elastic constants

List-II

1. Cyclic pile load test
2. Pressure meter test
3. Plate load test
4. Standard penetration test
5. Dynamic cone penetration test

Codes :

	P	Q	R	S
(a.)	1	3	2	5
(b.)	1	2	4	3
(c.)	2	5	1	3
(d.)	3	4	1	2

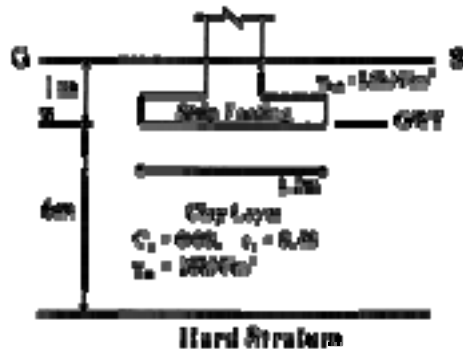
Data for Q. 57 & Q.58 are given below. Solve the problems and choose the correct answers.

A canal having side slopes 1 : 1 is proposed to be constructed in a cohesive soil to a depth of 10m below the ground surface. The soil properties are $\phi_u = 15^\circ$, $C_u = 12\text{kPa}$, $e = 1.0$, $G_s = 2.65$.

57. If Taylor's Stability Number, S_n is 0.08 and if the canal flows full, the factor of safety with respect to cohesion against failure of the canal bank slopes will be
- (a.) 3.7
 - (b.) 1.85
 - (c.) 1.0
 - (d.) none of these
58. If there is a sudden drawdown of water in the canal and if Taylor's Stability Number for the reduced value of ϕ_w is 0.126, the factor of safety with respect to cohesion against the failure of bank slopes will be
- (a.) 1.85
 - (b.) 1.18
 - (c.) 0.84
 - (d.) 0.53

Data for Q. 59 & Q.60 are given below. Solve the problems and choose the correct answers.

Figure shows the geometry of a strip footing supporting the load bearing walls of a three storied building and the properties of clay layer.



59. If the pressure acting on the footing is 40kPa, the consolidation settlement of the footing will be
- 0.89mm
 - 8.9mm
 - 89.0mm
 - none of these
60. If the elastic modulus and the Poisson's ratio of the clay layer are respectively 50×10^3 kPa and 0.4 and if the influence factor for the strip footing is 1.75, the elastic settlement of the footing will be
- 0.41mm
 - 1.41mm
 - 14.1 mm
 - none of these
61. A horizontal jet strikes a frictionless vertical plate (the plan view is shown in the figure). It is then divided into two parts, as shown in the figure. If the impact loss is neglected, what is the value of θ ?



- 15°
 - 30°
 - 45°
 - 60°
62. Two pipelines, one carrying oil (mass density 900 kg/m^3) and the other water, are connected to a manometer as shown in figure. By what amount the pressure in the water pipe should be increased so that the mercury levels in both the limbs of the manometer become equal? (Mass density of mercury = 13550 kg/m^3 and $g = 9.81 \text{ m/s}^2$)



- (a.) 24.7 kPa
 (b.) 26.5 kPa
 (c.) 26.7 kPa
 (d.) 28.9 kPa
63. A solid sphere (diameter 6mm) is rising through oil (mass density 900kg/m^3 , dynamic viscosity 0.7 kg/ms) at a constant velocity of 1 cm/s . What is the specific weight of the material from which the sphere is made? (Take $g = 9.81\text{m/s}^2$)
- (a.) 4.3 kN/m^3
 (b.) 5.3 kN/m^3
 (c.) 8.7 kN/m^3
 (d.) 12.3 kN/m^3
64. A hydraulic jump takes place in a triangular channel of vertex angle 90° , as shown in figure. The discharge is $1\text{ m}^3/\text{s}$ and the pre-jump depth is 0.5m . What will be the post-jump depth? (Take $g = 9.81\text{ m/s}^2$)



- (a.) 0.57 m
 (b.) 0.91 m
 (c.) 1.02 m
 (d.) 1.57 m

Data for Q.65 and Q.66 are given below. Solve the problems and choose correct answers.

A pipeline (diameter 0.3m , length 3km) carries water from point P to point R (see figure). The piezometric heads at P and R are to be maintained at 100m and 80m , respectively. To increase the discharge, a second pipe is added in parallel to the existing pipe from to R. The length of the additional pipe is also 2km . Assume the friction factor, $f = 0.04$ for all pipes and ignore minor losses.



65. What is the increase in discharge if the additional pipe has same diameter (0.3m)?
 (a.) 0%
 (b.) 33%
 (c.) 41%
 (d.) 67%
66. If there is no restriction on the diameter of the additional pipe what would be the maximum increase in discharge theoretically possible from this arrangement?
 (a.) 0%
 (b.) 50%
 (c.) 67%
 (d.) 73%

Data for Q.67 and Q.68 are given below. Solve the problems and choose correct answers.

A very wide rectangular channel carries a discharge of $5 \text{ m}^3/\text{s}$ per width. The channel has a bed slope of 0.004 and Manning's roughness coefficient, $n = 0.015$. At a certain section of the channel, the flow depth is 1m.

67. What Gradually Varied Flow profile exists at this section?
 (a.) M_2
 (b.) M_3
 (c.) S_2
 (d.) S_3
68. At what distance from this section the flow depth will be 0.9m? (Use the direct step method employing a single step.)
 (a.) 65 m downstream
 (b.) 50 m downstream
 (c.) 50 m upstream
 (d.) 65 m upstream
69. Results of a water sample analysis are as follows:

Cation	Concentration (mg/l)	Equivalent Weight
Na^+	40	23
Mg^{+2}	10	12.2
Ca^{+2}	55	20
K^+	2	39

(milliequivalent weight of $\text{CaCO}_3 = 50 \text{ mg/meg}$).

Hardness of the water sample in mg/l as CaCO_3 is

- (a.) 44.8
- (b.) 89.5
- (c.) 179
- (d.) 358

70. An ideal horizontal flow settling basin is 3m deep having surface area 900m^2 . Water flows at the rate of $8000\text{m}^3/\text{d}$, at water temperature 20°C ($\mu = 10^{-3} \text{ kg/m-s}$ and $\rho = 1000\text{kg/m}^3$). Assuming Stoke's law to be valid, the proportion (percentage) of spherical sand particles (0.01mm in diameter with specific gravity 2.65), that will be removed, is

- (a.) 32.5
- (b.) 67
- (c.) 87.5
- (d.) 95.5

71. Match List-I (Type of water impurity) with List-II (Method of treatment) and select the connect answer using the codes given below the lists:

List-I

P. Hardness

Q. Brackish water from sea

R. Residual MPN from filters

S. Turbidity

List-II

1. Reverse Osmosis

2. Chlorination

3. Zeolite Treatment

4. Coagulation and Flocculation

5. Coagulation, Flocculation and Filtration

Codes :

- | | P | Q | R | S |
|------|---|---|---|---|
| (a.) | 1 | 2 | 4 | 5 |
| (b.) | 3 | 2 | 2 | 4 |
| (c.) | 2 | 1 | 3 | 5 |
| (d.) | 3 | 1 | 2 | 5 |

72. Settling test on a sample drawn from Aeration Tank liquor of ASP ($\text{MLSS} = 2800\text{mg/l}$) was carried out with 1 litre sample. The test yielded a settled volume of 200ml. The value of Sludge Volume Index shall be

- (a.) 14.0
- (b.) 34.2

(c.) 71.4

(d.) 271

73. Match List-I (Characteristics of sewage discharged into inland waters) with List-II (Allowable limit, mg/l) and select the correct answer using the codes given below the lists:

List-I

P. SOD_5

Q. COD

R. Oil and Grease

S. Total Suspended Solids

List-II

1. 250

2. 30

3. 20

4. 10

5. 5

6. 3

Codes :

	P	Q	R	S
(a.)	2	5	4	2
(b.)	4	1	6	4
(c.)	3	1	4	2
(d.)	2	1	6	3

Data for Q.74 & Q.75 are given below. Solve the problems and choose correct answer.

A water treatment plant treating 10M/d of water requires 20mg/l of filter Alum, $Al_2(SO_4 \cdot 18 H_2O)$. The water has 6mg/l of alkalinity as $CaCO_3$.

(Al = 26.97, S = 32, C = 16, H = 1, Ca = 40, and O = 16).

74. Total alkalinity requirement (10^6 mg per day as $CaCO_3$) matching filter Alum shall be

(a.) 180

(b.) 120

(c.) 90

(d.) 60

75. Quantity of Quick Lime required (10^6 mg per year as CaO) shall be

(a.) 2132

(b.) 3000

(c.) 4132

(d.) 6132

Data for Q.76 & Q.77 are given below. Solve the problems and choose correct answers.

A conventional Activated Sludge Plant treating $1000\text{m}^3/\text{d}$ of municipal waste water disposes of its anaerobically digested sludge on relatively impervious farmland. Use the following data:

1. Raw Sewage : SS = 225mg/l (70%

volatile)

BOD = 190mg/l

(Excess activated sludge returned to primary)

2. Primary Settling : SS-50% removal

BOD - 30% removal

3. Excess Activated : 0.4g VSS produced per g

Sludge BOD applied

(80% volatile of total)

4. Anaerobic : VSS reduced 50%

Digester Digested sludge concentration - 60%

Sludge Specific Gravity - 1

5. Application on : $2\text{m}^3/\text{ha.d}$

farmland

76. Total volatile suspended solids to be anaerobically digested. (kg/d VSS) shall be

(a.) 133

(b.) 168

(c.) 233

(d.) 245

77. Area requirements (ha) for disposal of the sludge on farmland shall be

(a.) 2.95

(b.) 1.95

(c.) 0.95

(d.) 0.55

78. While applying the Rational formula for computing the design discharge, the rainfall duration is stipulated as the time of concentration because

(a.) this leads to the largest possible rainfall intensity

(b.) this leads to the smallest possible rainfall intensity

(c.) the time of concentration is the smallest rainfall duration for which the Rational formula is applicable

(d.) the time of concentration is the largest rainfall duration for which the Rational formula is applicable

79. Match List-I with List-II and select the correct answers using the codes given below the lists:

List-I

P. Rainfall intensity

Q. Rainfall excess

R. Rainfall averaging

S. Mass curve

List- II

1. Isohyets

2. cumulative rainfall

3. Hyetograph

4. direct runoff hydrograph

Codes :

	P	Q	R	S
(a.)	1	3	2	4
(b.)	3	4	1	2
(c.)	1	2	4	3
(d.)	3	4	2	1

80. While designing a hydraulic structure, the piezometric head at bottom of the floor is computed as 10m. The datum is 3m below floor bottom. The assured standing water depth above the floor is 2m. The specific gravity of the floor material is 2.5. The floor thickness should be

(a.) 2.00m

(b.) 3.33m

(c.) 4.40m

(d.) 6.00m

81. The plan area of a reservoir is 1km^2 . The water level in the reservoir is observed to decline by 20cm in a certain period. During this period the reservoir receives a surface inflow of 10 hectare-meters, and 20 hectare-meters are abstracted from the reservoir for irrigation and power. The pan evaporation and rainfall recorded during the same period at a nearby meteorological station are 12cm and 3cm respectively. The calibrated pan factor is 0.7. The seepage loss from the reservoir during this period in hectare-meters is

(a.) 0.0

(b.) 1.0

(c.) 2.4

(d.) 4.6

Data for Q.82 & Q.83 are given below. Solve the problems and choose correct answers.

An average rainfall of 16cm occurs over a catchment during a period of 12 hours with a uniform intensity. The unit hydrograph (unit depth = 1cm, duration = 6 hours) of the catchment rises linearly from 0 to 30 cumecs in six hours and then falls linearly from 30 to 0 cumecs in the next 12 hours. ϕ index of the catchment is known to be 0.5cm/hr. Base flow in the river is known to be 5 cumecs.

82. Peak discharge of the resulting direct run off hydrograph shall be
- (a.) 150 cumecs
 - (b.) 225 cumecs
 - (c.) 230 cumecs
 - (d.) 360 cumecs
83. Area of the catchment in hectares is
- (a.) 97.20
 - (b.) 270
 - (c.) 9720
 - (d.) 27000
84. The design speed for a National Highway is 100kmph. If the maximum permissible super elevation is 0.10 and the coefficient of lateral friction is 0.15, the ruling minimum radius of horizontal curve on the highway should be
- (a.) 260m
 - (b.) 315m
 - (c.) 380m
 - (d.) 410m
85. A traffic stream in a particular direction of a two lane road is moving with a constant speed of 50kmph, with an average headway of 2.52 seconds. The longitudinal distance between two consecutive vehicles is
- (a.) 30 m
 - (b.) 35 m
 - (c.) 38 m
 - (d.) 42 m
86. In the Marshall method of mix design, the coarse aggregates, fine aggregates, filler and bitumen, having respective specific gravities of 2.62, 2.72, 2.70 and 1.02 are mixed in the ratio of 55, 34.6, 4.8 and 5.6 per cent; respectively. The theoretical specific gravity of the mix would be
- (a.) 2.36
 - (b.) 2.40
 - (c.) 2.44
 - (d.) 2.50
87. The plate load test conducted with a 75cm diameter plate on soil subgrade yielded a deflection of 2.5mm under a stress of 800N/cm^2 . The modulus of elasticity of the subgrade soil, in kN/cm^2 is

- (a.) 141.6
(b.) 154.6
(c.) 160.0
(d.) 185.4

88. List-I below gives a list of physical properties of aggregates which should be determined to judge their suitability in road construction. List-II gives a list of laboratory tests which are conducted to determine these properties. Match List-I with List-II and select the correct answer from the codes given below the lists:

List-I

P. Hardness

Q. Porosity

R. Toughness

S. Durability

List-II

1. Water adsorption

2. Impact test

3. Soundness test

4. Abrasion test

- | | P | Q | R | S |
|------|---|---|---|---|
| (a.) | 1 | 2 | 3 | 4 |
| (b.) | 4 | 1 | 2 | 3 |
| (c.) | 3 | 4 | 1 | 2 |
| (d.) | 2 | 3 | 4 | 1 |

89. If L defines the Laplace Transform of a function, $L[\sin(at)]$ will be equal to

- (a.) $a/(s^2 - a^2)$
(b.) $a/(s^2 + a^2)$
(c.) $s/(s^2 + a^2)$
(d.) $s/(s^2 - a^2)$

90. The Fourier series expansion of a symmetric and even function, $f(x)$ where

$$f(x) = 1 + (2x/\pi), \quad -\pi \leq x \leq 0 \quad \text{and} \\ = 1 - (2x/\pi), \quad 0 \leq x \leq \pi$$

will be

- (a.) $\sum_{n=1}^{\infty} (4/\pi^2 n^2)(1 + \cos n\pi)$
(b.) $\sum_{n=1}^{\infty} (4/\pi^2 n^2)(1 - \cos n\pi)$
(c.) $\sum_{n=1}^{\infty} (4/\pi^2 n^2)(1 - \sin n\pi)$
(d.) $\sum_{n=1}^{\infty} (4/\pi^2 n^2)(1 + \sin n\pi)$