

GATE - 2006

EC : Electronics And Communication Engineering

Time Allowed : 3 Hours

Maximum Marks : 150

Read the following instructions carefully

1. This question paper contains all objective questions. Q. 1 to Q. 20 carry **one** mark each and Q.21 to Q. 85 carry **two** marks each.
2. Answer all the questions.
3. Questions must be answered on **Objective Response Sheet (ORS)** by darkening the appropriate bubble (marked A, B, C, D) using **HB** pencil against the question number on the left hand side of the **ORS**. **Each question has only one correct answer**. In case you wish to change an answer, erase the old answer completely.
4. Wrong answers will carry **NEGATIVE** marks. In Q. 1 to 20, 0.25 mark will be deducted for each wrong answer. In Q. 21 to 76, Q 78 to 80-82 and in Q. 84 0.5 mark will be deducted for each wrong answer. However, there is no negative marking in Q.77, 79, 81, 83 and in Q. 85. More than one answer bubbled against a question will be taken as an incorrect response.
5. Write your registration number, your name and name of the examination centre at the specified locations on the right half of the **ORS**.
6. Using HB pencil, darken the appropriate bubble under each digit of your registration number and the letters corresponding to your paper code.
7. Calculator is allowed in the examination hall.
8. Charts, graph sheets or tables are **NOT** allowed in the examination hall.
9. Rough work can be done on the question paper itself. Additionally blank pages are given at the end of the question paper for rough work.
10. This question paper contains 28 printed pages including pages for rough work. Please check all pages and report, if there is any discrepancy.

Question 1 to Q. 20 carry one mark each

- The rank of the matrix $\begin{bmatrix} 1 & 1 & 1 \\ 1 & -1 & 0 \\ 1 & 1 & 1 \end{bmatrix}$ is
 - 0
 - 1
 - 2
 - 3
- $\nabla \times \nabla \times P$, where P is a vector, is equal to
 - $P \times \nabla \times P - \nabla^2 P$
 - $\nabla^2 P + \nabla (\nabla \cdot P)$
 - $\nabla^2 P + \nabla \times P$
 - $\nabla (\nabla \cdot P) - \nabla^2 P$
- $\iint (\nabla \times P) \cdot ds$, where P is a vector, is equal to
 - $\oint P \cdot dl$
 - $\oint \nabla \times \nabla \times P \cdot dl$
 - $\oint \nabla \times P \cdot dl$
 - $\iiint \nabla \cdot P \, dv$
- A probability density function is of the form $p(x) = Ke^{-\alpha|x|}$, $x \in (-\infty, \infty)$
The value of K is
 - 0.5
 - 1
 - 0.5α
 - α
- A solution for the differential equation $\dot{x}(t) + 2x(t) = \delta(t)$
with initial condition $x(0^-) = 0$ is
 - $e^{-2t} u(t)$
 - $e^{2t} u(t)$
 - $e^{-t} u(t)$
 - $e^t u(t)$
- A low-pass filter having a frequency response $H(j\omega) = A(\omega) e^{j\phi(\omega)}$ does not produce any phase distortion, if
 - $A(\omega) = C\omega^2, \phi(\omega) = k\omega^3$
 - $A(\omega) = C\omega^2, \phi(\omega) = k\omega$
 - $A(\omega) = C\omega, \phi(\omega) = k\omega^2$
 - $A(\omega) = C, \phi(\omega) = k\omega^{-1}$
- The values of voltage (V_D) across a tunnel-diode corresponding to peak and valley currents are V_P and V_V respectively. The range of tunnel-diode voltage V_D for which the slope of its $I-V_D$ characteristics is negative would be
 - $V_D < 0$
 - $0 \leq V_D < V_P$
 - $V_P \leq V_D < V_V$
 - $V_D \geq V_V$
- The concentration of minority carriers in an extrinsic semiconductor under equilibrium is
 - directly proportional to the doping concentration
 - inversely proportional to the doping concentration
 - directly proportional to the intrinsic concentration
 - inversely proportional to the intrinsic concentration
- Under low level injection assumption, the injected minority carrier current for an extrinsic semiconductor is essentially the
 - diffusion current
 - drift current
 - recombination current
 - induced current
- The phenomenon known as "Early Effect" in a bipolar transistor refers to a reduction of the effective base-width caused by
 - electron-hole recombination at the base
 - the reverse biasing of the base-collector junction
 - the forward biasing of emitter-base junction
 - the early removal of stored base charge during saturation-to-cutoff switching
- The input impedance (Z_i) and the output impedance (Z_o) of an ideal transconductance (voltage controlled current source) amplifier are
 - $Z_i = 0, Z_o = 0$
 - $Z_i = 0, Z_o = \infty$
 - $Z_i = \infty, Z_o = 0$
 - $Z_i = \infty, Z_o = \infty$
- An n -channel depletion MOSFET has following two points on its I_D-V_{GS} curve
 - $V_{GS} = 0$ at $I_D = 12$ mA and
 - $V_{GS} = -6$ Volts at $I_D = 0$

Which of the following Q-points will give the highest trans-conductance gain for small signals?

 - $V_{GS} = -6$ Volts
 - $V_{GS} = -3$ Volts
 - $V_{GS} = 0$ Volts
 - $V_{GS} = 3$ Volts
- The number of product terms in the minimized sum-of-product expression obtained through the following K-map is (where, "d" denotes don't care states)

1	0	0	1
0	d	0	0
0	0	d	1
1	0	0	1

 - 2
 - 3
 - 4
 - 5

14. Let $x(t) \longleftrightarrow X(j\omega)$ be Fourier Transform pair. The Fourier Transform of the signal $x(5t - 3)$ in terms of $X(j\omega)$ is given as

(a) $\frac{1}{5} e^{-j3\omega/5} X\left(\frac{j\omega}{5}\right)$ (b) $\frac{1}{5} e^{j3\omega/5} X\left(\frac{j\omega}{5}\right)$

(c) $\frac{1}{5} e^{-j3\omega} X\left(\frac{j\omega}{5}\right)$ (d) $\frac{1}{5} e^{j3\omega} X\left(\frac{j\omega}{5}\right)$

15. The Dirac delta function $\delta(t)$ is defined as

(a) $\delta(t) = \begin{cases} 1, & t = 0 \\ 0, & \text{otherwise} \end{cases}$

(b) $\delta(t) = \begin{cases} \infty, & t = 0 \\ 0, & \text{otherwise} \end{cases}$

(c) $\delta(t) = \begin{cases} 1, & t = 0 \\ 0, & \text{otherwise} \end{cases}$ and $\int_{-\infty}^{\infty} \delta(t) dt = 1$

(d) $\delta(t) = \begin{cases} \infty, & t = 0 \\ 0, & \text{otherwise} \end{cases}$ and $\int_{-\infty}^{\infty} \delta(t) dt = 1$

16. If the region of convergence of $x_1[n] + x_2[n]$ is

$\frac{1}{3} < |z| < \frac{2}{3}$, then the region of convergence of

$x_1[n] - x_2[n]$ includes

(a) $\frac{1}{3} < |z| < 3$ (b) $\frac{2}{3} < |z| < 3$

(c) $\frac{2}{3} < |z| < 3$ (d) $\frac{1}{3} < |z| < \frac{2}{3}$

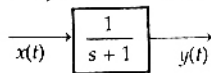
17. The open-loop transfer function of a unity-gain feedback control system is given by

$$G(s) = \frac{K}{(s+1)(s+2)}$$

The gain margin of the system in dB is given by

- (a) 0 (b) 1
(c) 20 (d) ∞

18. In the system shown below, $x(t) = (\sin t) u(t)$. In steady-state, the response $y(t)$ will be



(a) $\frac{1}{\sqrt{2}} \sin\left(t - \frac{\pi}{4}\right)$ (b) $\frac{1}{\sqrt{2}} \sin\left(t + \frac{\pi}{4}\right)$

(c) $\frac{1}{\sqrt{2}} e^{-t} \sin t$ (d) $\sin t - \cos t$

19. The electric field of an electromagnetic wave propagating in the positive z -direction is given by

$$E = \hat{a}_x \sin(\omega t - \beta z) + \hat{a}_y \sin\left(\omega t - \beta z + \frac{\pi}{2}\right)$$

The wave is

- (a) linearly polarized in the z -direction
(b) elliptically polarized
(c) left-hand circularly polarized
(d) right-hand circularly polarized

20. A transmission line is feeding 1 Watt of power to a horn antenna having a gain of 10 dB. The antenna is matched to the transmission line. The total power radiated by the horn antenna into the free-space is

- (a) 10 Watts (b) 1 Watt
(c) 0.1 Watt (d) 0.01 Watt

Q.21 to Q. 75 carry two marks each.

21. The eigenvalues and the corresponding eigenvectors of a 2×2 matrix are given by

Eigenvalue Eigenvector

$\lambda_1 = 8$ $v_1 = \begin{bmatrix} 1 \\ 1 \end{bmatrix}$

$\lambda_2 = 4$ $v_2 = \begin{bmatrix} 1 \\ -1 \end{bmatrix}$

The matrix is

(a) $\begin{bmatrix} 6 & 2 \\ 2 & 6 \end{bmatrix}$ (b) $\begin{bmatrix} 4 & 6 \\ 6 & 4 \end{bmatrix}$

(c) $\begin{bmatrix} 2 & 4 \\ 4 & 2 \end{bmatrix}$ (d) $\begin{bmatrix} 4 & 8 \\ 8 & 4 \end{bmatrix}$

22. For the function of a complex variable $W = \ln Z$ (where, $W = u + jv$ and $Z = x + jy$), the $u = \text{constant}$ lines get mapped in Z -plane as

- (a) set of radial straight lines
(b) set of concentric circles
(c) set of confocal hyperbolas
(d) set of confocal ellipses

23. The value of the contour integral

$$\oint_{|z|=2} \frac{1}{z^2+4} dz \text{ in positive sense is}$$

(a) $\frac{j\pi}{2}$ (b) $-\frac{\pi}{2}$

(c) $-\frac{j\pi}{2}$ (d) $\frac{\pi}{2}$

24. The integral $\int_0^{\pi} \sin^3 \theta \, d\theta$ is given by

- (a) $\frac{1}{2}$ (b) $\frac{2}{3}$
 (c) $\frac{4}{3}$ (d) $\frac{8}{3}$

25. Three companies X, Y and Z supply computers to a university. The percentage of computers supplied by them and the probability of those being defective are tabulated below

Company	% of computers supplied	Probability of being defective
X	60%	0.01
Y	30%	0.02
Z	10%	0.03

Given that a computer is defective, the probability that it was supplied by Y is

- (a) 0.1 (b) 0.2
 (c) 0.3 (d) 0.4

26. For the matrix $\begin{bmatrix} 4 & 2 \\ 2 & 4 \end{bmatrix}$, the eigen value

corresponding to the eigenvector $\begin{bmatrix} 101 \\ 101 \end{bmatrix}$ is

- (a) 2 (b) 4
 (c) 6 (d) 8

27. For the differential equation $\frac{d^2 y}{dx^2} + k^2 y = 0$, the

boundary conditions are

- (i) $y = 0$ for $x = 0$, and
 (ii) $y = 0$ for $x = a$

The form of non-zero solutions of y (where m varies over all integers) are

- (a) $y = \sum_m A_m \sin \frac{m\pi x}{a}$
 (b) $y = \sum_m A_m \cos \frac{m\pi x}{a}$
 (c) $y = \sum_m A_m x \frac{m\pi}{a}$
 (d) $y = \sum_m A_m e^{-\frac{m\pi x}{a}}$

28. Consider the function $f(t)$ having Laplace transform

$$F(s) = \frac{\omega_0}{s^2 + \omega_0^2} \quad \text{Re}[s] > 0$$

The final value of $f(t)$ would be

- (a) 0 (b) 1
 (c) $-1 \leq f(\infty) \leq 1$ (d) ∞

29. As x is increased from $-\infty$ to ∞ , the function

$$f(x) = \frac{e^x}{1 + e^x}$$

- (a) monotonically increases
 (b) monotonically decreases
 (c) increases to a maximum value and then decreases
 (d) decreases to a minimum value and then increases

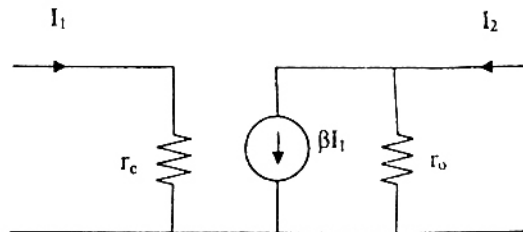
30. A two-port network is represented by ABCD parameters given by

$$\begin{bmatrix} V_1 \\ I_1 \end{bmatrix} = \begin{bmatrix} A & B \\ C & D \end{bmatrix} \begin{bmatrix} V_2 \\ -I_2 \end{bmatrix}$$

If port-2 is terminated by R_L , then input impedance seen at port-1 is given by

- (a) $\frac{A + BR_L}{C + DR_L}$ (b) $\frac{AR_L + C}{BR_L + D}$
 (c) $\frac{DR_L + A}{BR_L + C}$ (d) $\frac{B + AR_L}{D + CR_L}$

31. In the two port network shown in the figure below, z_{12} and z_{21} are, respectively

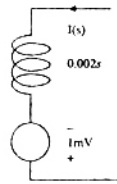


- (a) r_c and βr_o (b) 0 and $-\beta r_o$
 (c) 0 and βr_o (d) r_c and $-\beta r_o$

32. The first and the last critical frequencies (singularities) of a driving point impedance function of a passive network having two kinds of elements, are a pole and a zero respectively. The above property will be satisfied by

- (a) RL network only
- (b) RC network only
- (c) LC network only
- (d) RC as well as RL networks

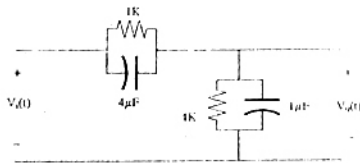
33. A 2 mH inductor with some initial current can be represented as shown below, where s is the Laplace Transform variable. The value of initial current is



- (a) 0.5 A
- (b) 2.0 A
- (c) 1.0 A
- (d) 0.0 A

34. In the figure shown, assume that all the capacitors are initially uncharged.

If $V_i(t) = 10u(t)$ Volts, then $V_o(t)$ is given by



- (a) $8e^{-0.004t}$ Volts
- (b) $8(1 - e^{-0.004t})$ Volts
- (c) $8u(t)$ Volts
- (d) 8 Volts

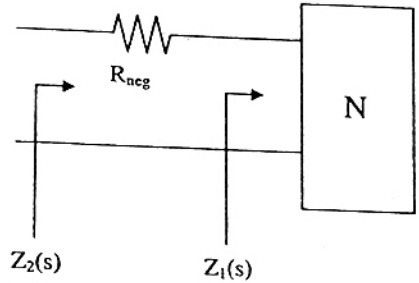
35. Consider two transfer functions

$$G_1(s) = \frac{1}{s^2 + as + b} \text{ and } G_2(s) = \frac{s}{s^2 + as + b}$$

The 3-dB bandwidths of their frequency responses are, respectively

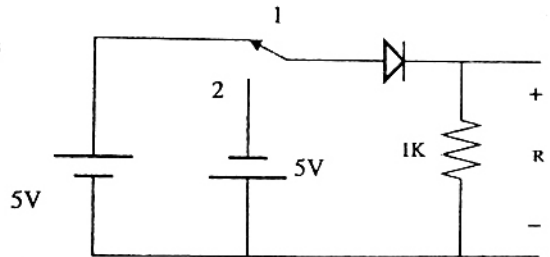
- (a) $\sqrt{a^2 - 4b}$, $\sqrt{a^2 + 4b}$
- (b) $\sqrt{a^2 + 4b}$, $\sqrt{a^2 - 4b}$
- (c) $\sqrt{a^2 - 4b}$, $\sqrt{a^2 - 4b}$
- (d) $\sqrt{a^2 + 4b}$, $\sqrt{a^2 + 4b}$

36. A negative resistance R_{neg} is connected to a passive network N having driving point impedance $Z_1(s)$ as shown below. For $Z_2(s)$ to be positive real,



- (a) $|R_{neg}| \leq \text{Re } Z_1(j\omega), \forall \omega$
- (b) $|R_{neg}| \leq |Z_1(j\omega)|, \forall \omega$
- (c) $|R_{neg}| \leq \text{Im } Z_1(j\omega), \forall \omega$
- (d) $|R_{neg}| \leq \angle Z_1(j\omega), \forall \omega$

37. In the circuit shown below, the switch was connected to position 1 at $t < 0$ and at $t = 0$, it is changed to position 2. Assume that y the diode has zero voltage drop and a storage time t_s . For $0 < t \leq t_s$, V_R is given by (all in Volts)



- (a) $V_R = -5$
- (b) $V_R = +5$
- (c) $0 \leq V_R < 5$
- (d) $-5 < V_R < 0$

38. The majority carriers in an n -type semiconductor have an average drift velocity V in a direction perpendicular to a uniform magnetic field B . The electric field E induced due to Hall effect acts in the direction

- (a) $V \times B$
- (b) $B \times V$
- (c) along V
- (d) opposite to V

39. Find the correct match between Group 1 and Group 2

- | Group 1 | Group 2 |
|-------------------|----------------------------------|
| E. Varactor diode | 1. Voltage reference |
| F. PIN diode | 2. High-frequency switch |
| G. Zener diode | 3. Tuned circuits |
| H. Schottky diode | 4. Current controlled attenuator |

- (a) E-4, F-2, G-1, H-3
- (b) E-2, F-4, G-1, H-3
- (c) E-3, F-4, G-1, H-2
- (d) E-1, F-3, G-2, H-4

40. A heavily doped *n*-type semiconductor has the following data

Hole-electron mobility ratio : 0.4

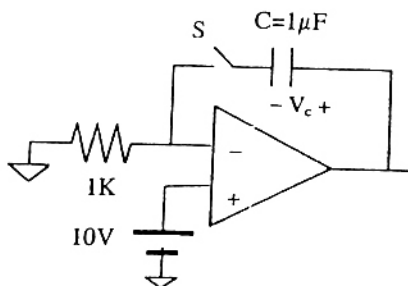
Doping concentration : 4.2×10^8 atoms/ m^3

Intrinsic concentration : 1.5×10^4 atoms/ m^3

The ratio of conductance of the *n*-type semiconductor to that of the intrinsic semiconductor of same material and at the same temperature is given by

- (a) 0.00005
- (b) 2,000
- (c) 10,000
- (d) 20,000

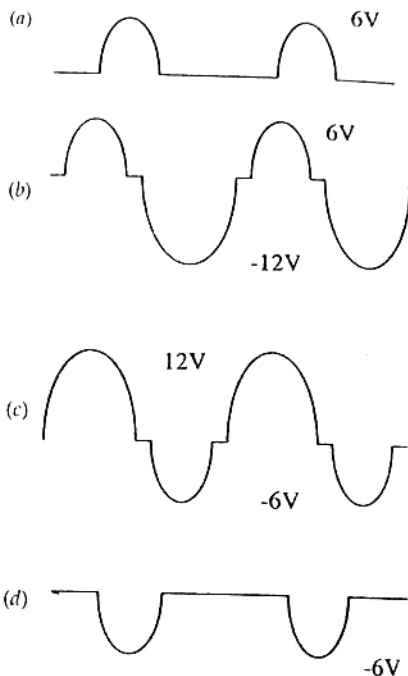
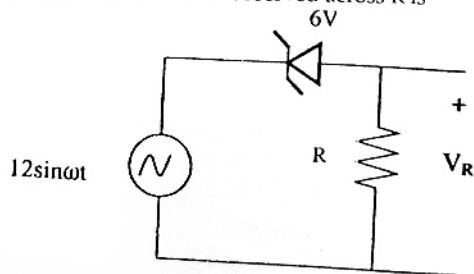
41. For the circuit shown in the following figure, the capacitor *C* is initially uncharged. At $t = 0$, the switch *S* is closed. The voltage V_C across the capacitor at $t = 1$ millisecond is



In the figure shown above, the OP AMP is supplied with $\pm 15V$ and the ground has been shown by the symbol ∇ .

- (a) 0 Volts
- (b) 6.3 Volts
- (c) 9.45 Volts
- (d) 10 Volts

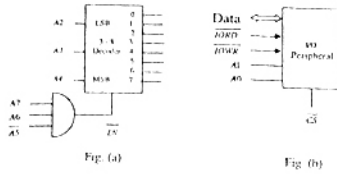
42. For the circuit shown below, assume that the zener diode is ideal with a breakdown voltage of 6 Volts. The waveform observed across *R* is



43. A new Binary Coded Pentary (BCP) number system is proposed in which every digit of a base-5 number is represented by its corresponding 3-bit binary code. For example, the base-5 number 24 will be represented by its BCP code 010100. In this numbering system, the BCP code 100010011001 corresponds to the following number in base-5 system

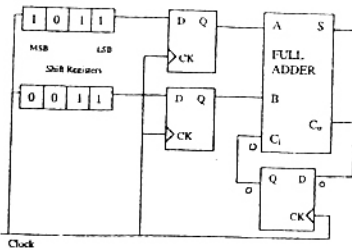
- (a) 423
- (b) 1324
- (c) 2201
- (d) 4231

44. An $\frac{1}{O}$ peripheral device shown in Figure (b) below is to be interfaced to an 8085 microprocessor. To select the $\frac{1}{O}$ device in the $\frac{1}{O}$ address range D4 H - D7 H, its chip-select (\overline{CS}) should be connected to the output of the decoder shown in Figure (a) below



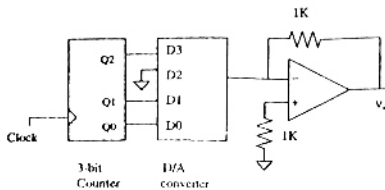
- (a) output 7
 (b) output 5
 (c) output 2
 (d) output 0

45. For the circuit shown in figure below, two 4-bit parallel-in serial-out shift registers loaded with the data shown are used to feed the data to a full adder. Initially, all the flip-flops are in clear state. After applying two clock pulses, the outputs of the full adder should be

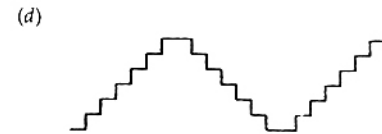
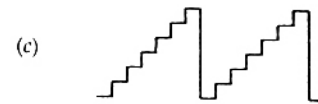
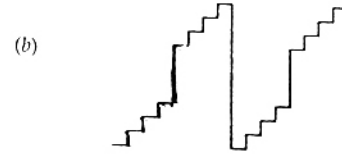
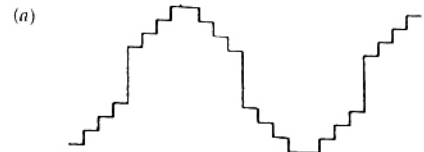


- (a) $S = 0, C_0 = 0$ (b) $S = 0, C_0 = 1$
 (c) $S = 1, C_0 = 0$ (d) $S = 1, C_0 = 1$

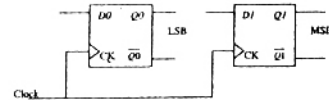
46. A 4-bit D/A converter is connected to a free-running 3-bit UP counter, as shown in the following figure. Which of the following waveforms will be observed at V_o ?



In the figure shown above, the ground has been shown by the symbol ∇



47. Two D-flip-flops, as shown below, are to be connected as a synchronous counter that goes through the following $Q_1 Q_0$ sequence $00 \rightarrow 01 \rightarrow 11 \rightarrow 10 \rightarrow 00 \rightarrow \dots$. The inputs D_0 and D_1 respectively should be connected as



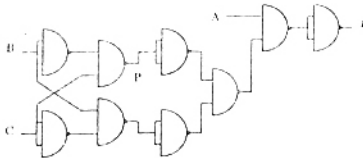
- (a) $\overline{Q_1}$ and Q_0
 (b) $\overline{Q_0}$ and Q_1
 (c) $\overline{Q_1} Q_0$ and $\overline{Q_1} Q_0$
 (d) $\overline{Q_1} \overline{Q_0}$ and $Q_1 Q_0$

48. Following is the segment of a 8085 assembly language program

```
LXI SP, EFFFH
CALL 3000 H
:
:
3000 H: LXI H, 3CF4 H
PUSH PSW
SPHL
POP PSW
RET
```

On completion of RET execution, the contents of SP is

- (a) 3CFO H (b) 3CF8 H
(c) EFFD H (d) EFFF H
49. The point P in the following figure is stuck-at-1. The output f will be



- (a) \overline{ABC} (b) \overline{A}
(c) $AB\overline{C}$ (d) A
50. A signal $m(t)$ with bandwidth 500 Hz is first multiplied by a signal $g(t)$ where

$$g(t) = \sum_{R=-\infty}^{\infty} (-1)^k \delta(t - 0.5 \times 10^{-4} k)$$

The resulting signal is then passed through an ideal lowpass filter with bandwidth 1 kHz. The output of the lowpass filter would be

- (a) $\delta(t)$ (b) $m(t)$
(c) 0 (d) $m(t)\delta(t)$
51. The minimum sampling frequency (in samples/sec) required to reconstruct the following signal from its samples without distortion

$$x(t) = 5 \left(\frac{\sin 2\pi 1000t}{\pi t} \right)^3 + 7 \left(\frac{\sin 2\pi 1000t}{\pi t} \right)^2$$

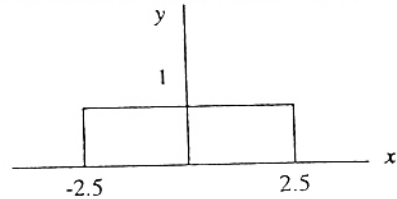
would be

- (a) 2×10^3 (b) 4×10^3
(c) 6×10^3 (d) 8×10^3

52. A uniformly distributed random variable X with probability density function

$$f_x(x) = \frac{1}{10} (u(x+5) - u(x-5))$$

where $u(\cdot)$ is the unit step function is passed through a transformation given in the figure below. The probability density function of the transformed random variable Y would be



- (a) $f_Y(y) = \frac{1}{5} (u(y+2.5) - u(y-2.5))$
(b) $f_Y(y) = 0.5 \delta(y) + 0.5 \delta(y-1)$
(c) $f_Y(y) = 0.25 \delta(y+2.5) + 0.25 \delta(y-2.5) + 0.5 \delta(y)$
(d) $f_Y(y) = 0.25 \delta(y+2.5) + 0.25 \delta(y-2.5) + \frac{1}{10} (u(y+2.5) - u(y-2.5))$

53. A system with input $x[n]$ and output $y[n]$ is given

$$\text{as } y[n] = \left(\sin \frac{5}{6} \pi n \right) x(n).$$

The system is

- (a) linear, stable and invertible
(b) non-linear, stable and non-invertible
(c) linear, stable and non-invertible
(d) linear, unstable and invertible
54. The unit-step response of a system starting from rest is given by

$$C(t) = 1 - e^{-2t} \text{ for } t \geq 0$$

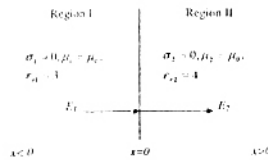
The transfer function of the system is

- (a) $\frac{1}{1+2s}$ (b) $\frac{2}{2+s}$
(c) $\frac{1}{2+s}$ (d) $\frac{2s}{1+2s}$
55. The Nyquist plot of $G(j\omega)H(j\omega)$ for a closed loop control system, passes through $(-1, j0)$ point in the GH plane. The gain margin of the system in dB is equal to

- (a) infinite (b) greater than zero
(c) less than zero (d) zero

66. A medium of relative permittivity $\epsilon_{r2} = 2$ forms an interface with free-space. A point source of electromagnetic energy is located in the medium at a depth of 1 meter from the interface. Due to the total internal reflection, the transmitted beam has a circular cross-section over the interface. The area of the beam cross-section at the interface is given by
- (a) $2\pi \text{ m}^2$ (b) $\pi^2 \text{ m}^2$
- (c) $\frac{\pi}{2} \text{ m}^2$ (d) $\pi \text{ m}^2$

67. A medium is divided into regions I and II about $x = 0$ plane, as shown in the figure below. An electromagnetic wave with electric field $E_1 = 4 \hat{a}_x + 3 \hat{a}_y + 5 \hat{a}_z$ is incident normally on the interface from region-I. The electric field E_2 in region-II at the interface is



- (a) $E_2 = E_1$
- (b) $4 \hat{a}_x + 0.75 \hat{a}_y - 1.25 \hat{a}_z$
- (c) $3 \hat{a}_x + 3 \hat{a}_y + 5 \hat{a}_z$
- (d) $-3 \hat{a}_x + 3 \hat{a}_y + 5 \hat{a}_z$

68. When a plane wave travelling in free-space is incident normally on a medium having $\epsilon_r = 4.0$, then fraction of power transmitted into the medium is given by
- (a) $\frac{8}{9}$ (b) $\frac{1}{2}$
- (c) $\frac{1}{3}$ (d) $\frac{5}{6}$
69. A rectangular waveguide having TE_{10} mode as dominant mode is having a cutoff frequency of 18-GHz for the TE_{20} mode. The inner broad-wall dimension of the rectangular waveguide is
- (a) $\frac{5}{3}$ cms (b) 5 cms
- (c) $\frac{5}{2}$ cms (d) 10 cms

70. A mast antenna consisting of a 50 meter long vertical conductor operates over a perfectly conducting ground plane. It is base-fed at a frequency of 600-kHz. The radiation resistance of the antenna in ohms is
- (a) $\frac{2\pi^2}{5}$ (b) $\frac{\pi^2}{5}$
- (c) $\frac{4\pi^2}{5}$ (d) $20 \pi^2$

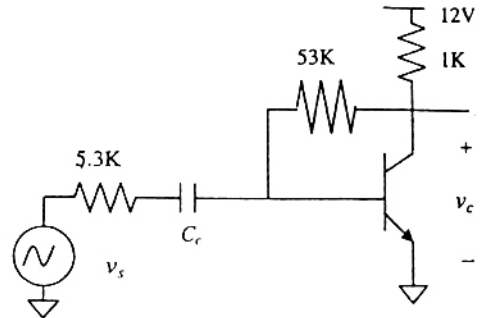
Common Data Questions

Common Data for Questions 71, 72, 73 :

In the transistor amplifier circuit shown in the figure below, the transistor has the following parameters :

$$\beta_{DC} = 60, V_{BE} = 0.7 \text{ V}, h_{ic} \rightarrow \infty, h_{fc} \rightarrow \infty$$

The capacitance C_c can be assumed to be infinite.



In the figure above, the ground has been shown by the symbol ∇

71. Under the DC conditions, the collector-to-emitter voltage drop is
- (a) 4.8 Volts (b) 5.3 Volts
- (c) 6.0 Volts (d) 6.6 Volts
72. If β_{DC} is increased by 10%, then collector-to-emitter voltage drop
- (a) increases by less than or equal to 10%
- (b) decreases by less than or equal to 10%
- (c) increases by more than 10%
- (d) decreases by more than 10%
73. The small-signal gain of the amplifier v_c/v_s is
- (a) - 10 (b) - 5.3
- (c) 5.3 (d) 10

Statement for Linked Answer Questions 82 and 83

Consider a unity-gain feedback control system whose open-loop transfer function is

$$G(s) = \frac{as + 1}{s^2}$$

82. The value of 'a' so that the system has a phase-margin equal to $\frac{\pi}{4}$ is approximately equal to
(a) 2.40 (b) 1.40
(c) 0.84 (d) 0.74
83. With the value of 'a' set for a phase-margin of $\frac{\pi}{4}$, the value of unit-impulse response of the open-loop system at $t=1$ second is equal to
(a) 3.40 (b) 2.40
(c) 1.84 (d) 1.74

Statement for Linked Answer Questions 84 and 85

A 30-Volts battery with zero source resistance is connected to a coaxial line of characteristic impedance of 50 Ohms at $t = 0$ second and terminated in an unknown resistive load. The line length is such that it takes 400 μ s for an electromagnetic wave to travel from source end to load end and vice-versa. At $t = 400 \mu$ s, the voltage at the load end is found to be 40 Volts.

84. The load resistance is
(a) 25 Ohms (b) 50 Ohms
(c) 75 Ohms (d) 100 Ohms
85. The steady-state current through the load resistance is
(a) 1.2 Amps (b) 0.3 Amps
(c) 0.6 Amps (d) 0.4 Amps

ANSWERS

- | | | | | | | | | | |
|---------|---------|---------|---------|---------|---------|---------|---------|---------|---------|
| 1. (c) | 2. (d) | 3. (a) | 4. (c) | 5. (a) | 6. (b) | 7. (c) | 8. (b) | 9. (a) | 10. (b) |
| 11. (d) | 12. (d) | 13. (a) | 14. (a) | 15. (d) | 16. (d) | 17. (d) | 18. (a) | 19. (c) | 20. (a) |
| 21. (a) | 22. (b) | 23. (d) | 24. (c) | 25. (d) | 26. (c) | 27. (a) | 28. (c) | 29. (a) | 30. (d) |
| 31. (b) | 32. (b) | 33. (a) | 34. (b) | 35. (b) | 36. (a) | 37. (a) | 38. (b) | 39. (c) | 40. (d) |
| 41. (d) | 42. (b) | 43. (d) | 44. (b) | 45. (d) | 46. (b) | 47. (a) | 48. (b) | 49. (d) | 50. (b) |
| 51. (c) | 52. (c) | 53. (c) | 54. (b) | 55. (d) | 56. (b) | 57. (c) | 58. (d) | 59. (a) | 60. (b) |
| 61. (b) | 62. (b) | 63. (a) | 64. (c) | 65. (b) | 66. (d) | 67. (c) | 68. (a) | 69. (c) | 70. (a) |
| 71. (c) | 72. (b) | 73. (a) | 74. (d) | 75. (a) | 76. (c) | 77. (b) | 78. (a) | 79. (a) | 80. (c) |
| 81. (b) | 82. (c) | 83. (c) | 84. (d) | 85. (b) | | | | | |