

**B. Tech Degree III Semester Examination in Marine Engineering,  
November 2009**

**MRE 306 MACHINE DRAWING**

Time: **4** Hours

Maximum Marks: 100

- I. Figure 1 shows the isometric view of a stub axle. Draw, full size, at least two orthographic views. (20)
- OR**
- II. Draw two views of each of the following muff coupling showing tolerances whenever required. (20)
- (i) Box muff coupling for 50  $\phi$  shaft
  - (ii) Half lap muff coupling for 40  $\phi$  shaft
  - (iii) Split muff coupling for 50  $\phi$  shaft.
- Give the part list for each of the muff couplings. (20)
- III. (a) A small shaping machine is to be installed on cement concrete foundation. Make neat sketches showing three alternate types of foundation bolts which could be used. One should be of a type, which will allow the machine to be moved to a new site, without the need for new bolts. (15)
- (b) Draw neat sketches in good proportions to indicate clearly at least three different ways in which hexagonal nuts may be securely locked. (15)
- OR**
- IV. (a) Make neat sketches to show: (7)
- (i) The basic metric thread form for a bolt, indicating the pitch, depth and thread angle.
  - (ii) One conventional representation of an external screw thread.
- (b) Sketch, approximately to scale and in good proportions, a sectional view showing a 12mm dia, stud 72mm long, screwed 24mm into an iron casting. What suitable material is used for the stud. (8)
- (c) A half sectional pictorial view of a Gland is shown in figure 2. Draw its half sectional front view, side view looking from the left hand side and top view. (15)
- V. Figure 3 shows the details of a Blow-off Cock. Draw the following assembled views: (50)
- (i) Front view, right half in section
  - (ii) Right side view
  - (iii) Top view, outside
- OR**
- VI. Assemble all parts of the big end of the marine engine connecting rod shown in figure 4 and draw its (50)
- (i) Half sectional front view, upper half in section
  - (ii) Right side view
  - (iii) Top view

**(Turn Over)**

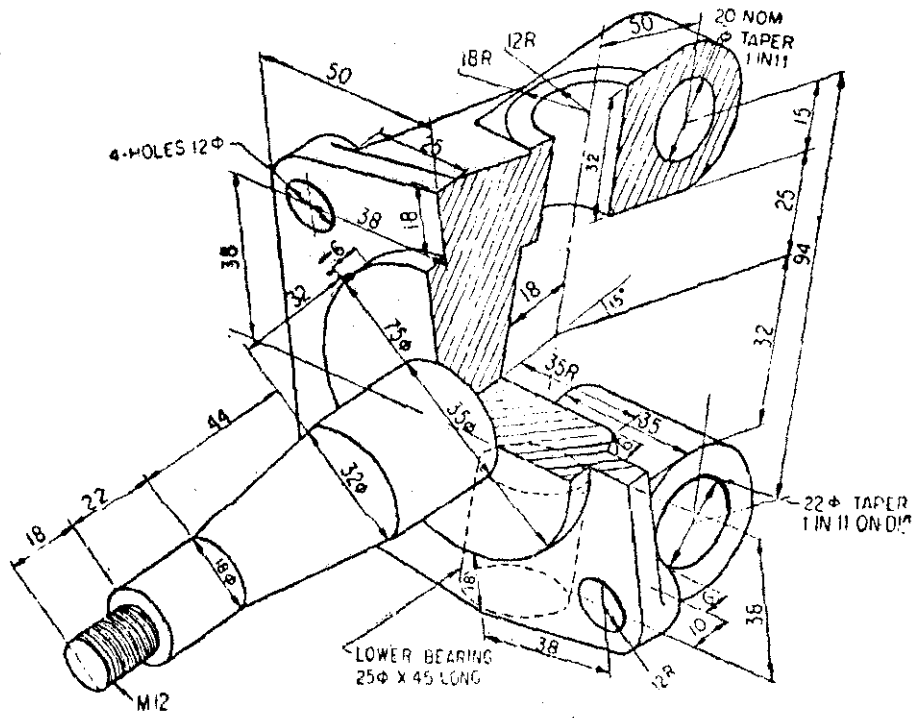


Fig: 4

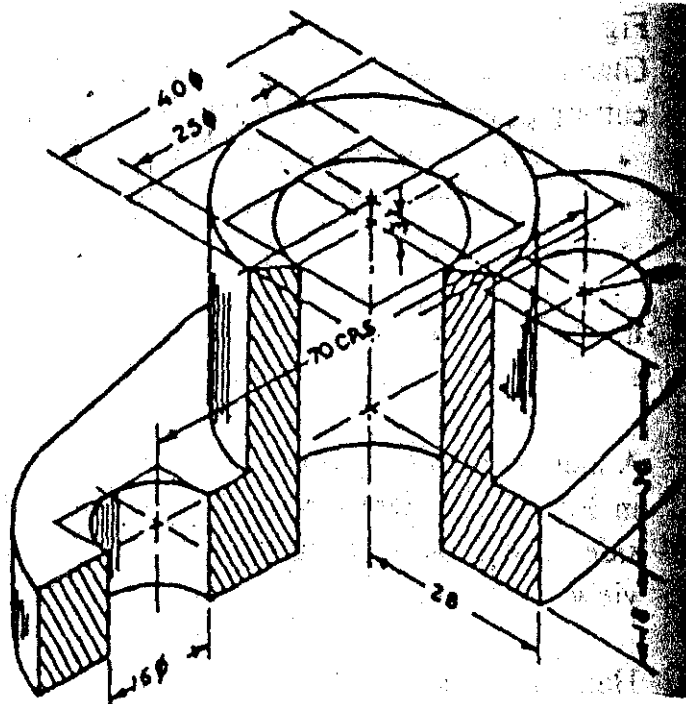


Fig: 2

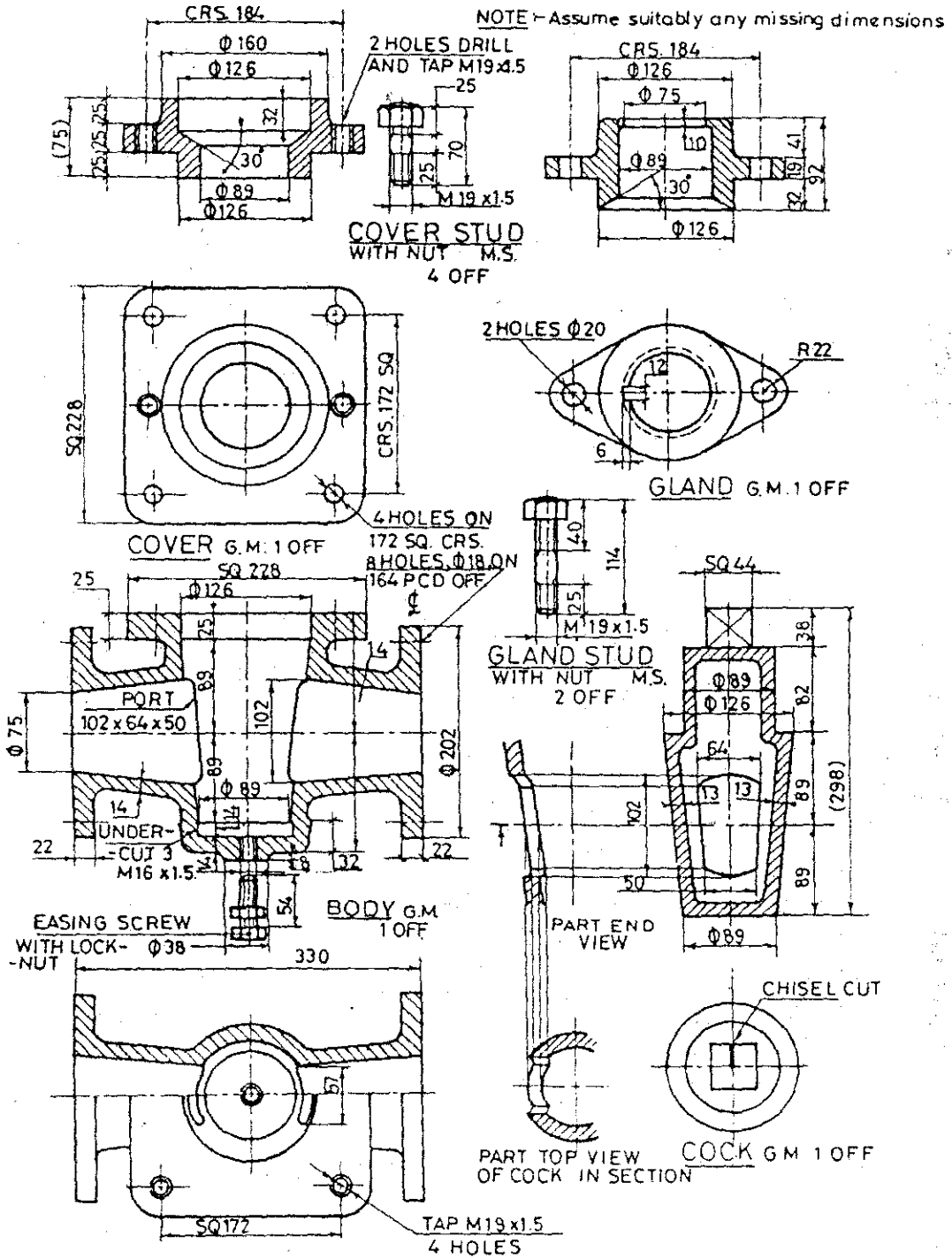


Fig:3

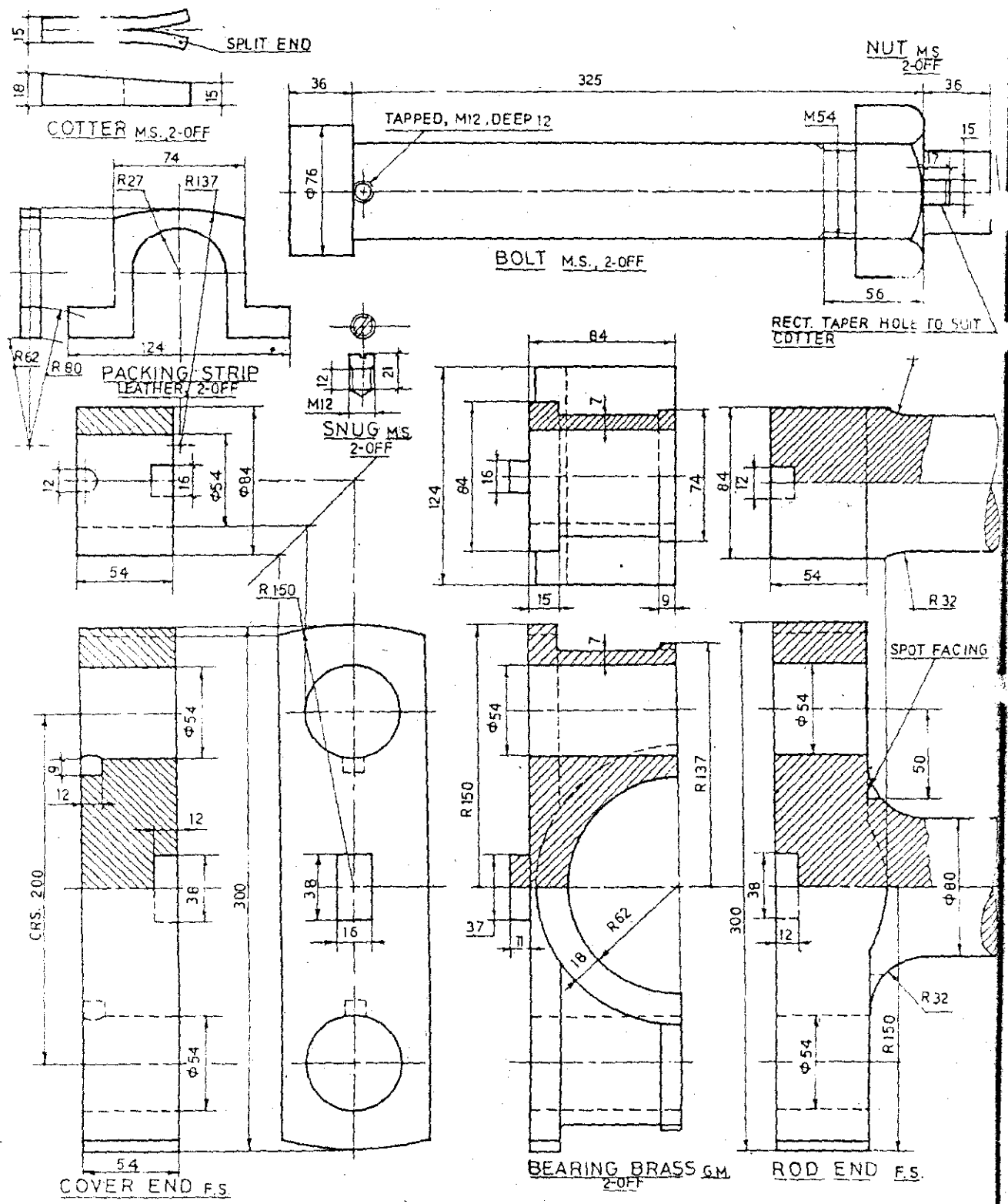


Fig: 4

\*\*\*